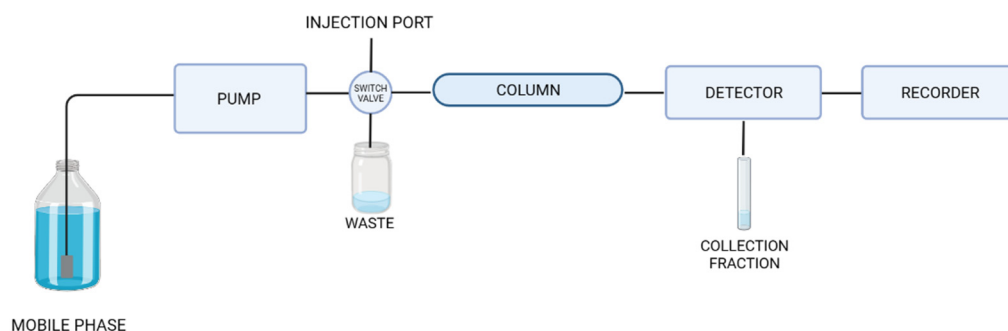
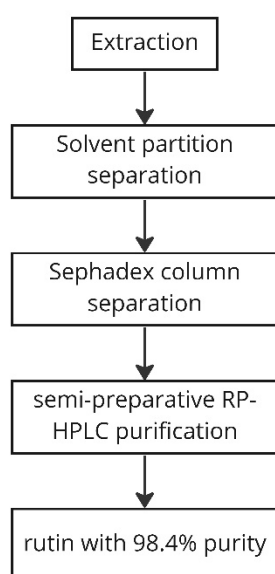


**Figure S1.** The mechanism linking inflammation to cancer.

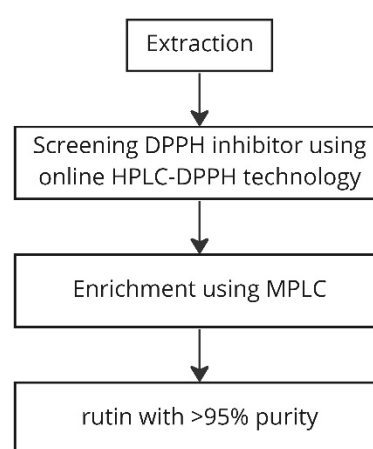


**Figure S2.** The Schematic of MPLC.

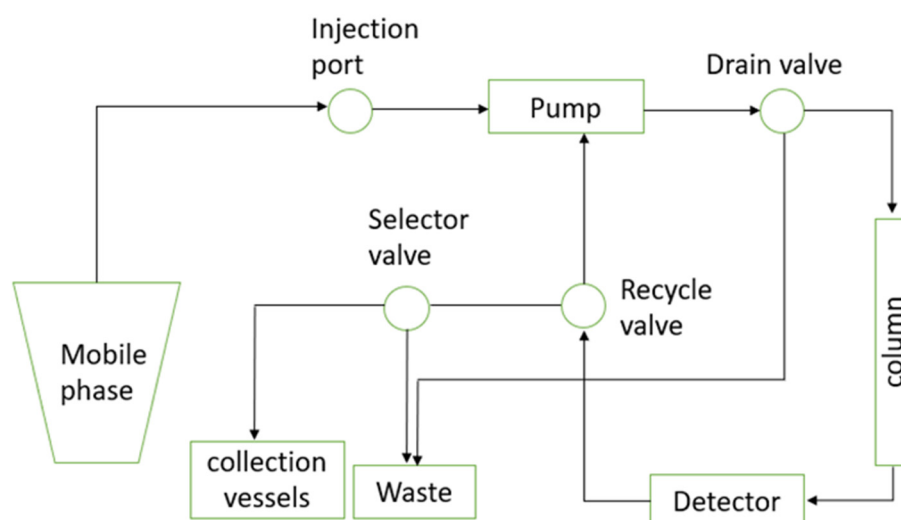
#### ISOLATION PROCESS 1



#### ISOLATION PROCESS 2



**Figure S3.** Two schemes of isolation process of rutin. DPPH, 1,1-diphenyl-2-picrylhydrazyl; MPLC, medium-pressure liquid chromatography; RP-HPLC, reverse-phase high-performance liquid chromatography.



**Figure S4.** Instrumentation of closed loop recycle-HPLC.