

Figure S1. A、 B and C type symptoms of tassel of typical maize inbred lines infected with *S. reilianum*
Note: the rows represent A、 B and C type and the columns represent the name of the inbred line.

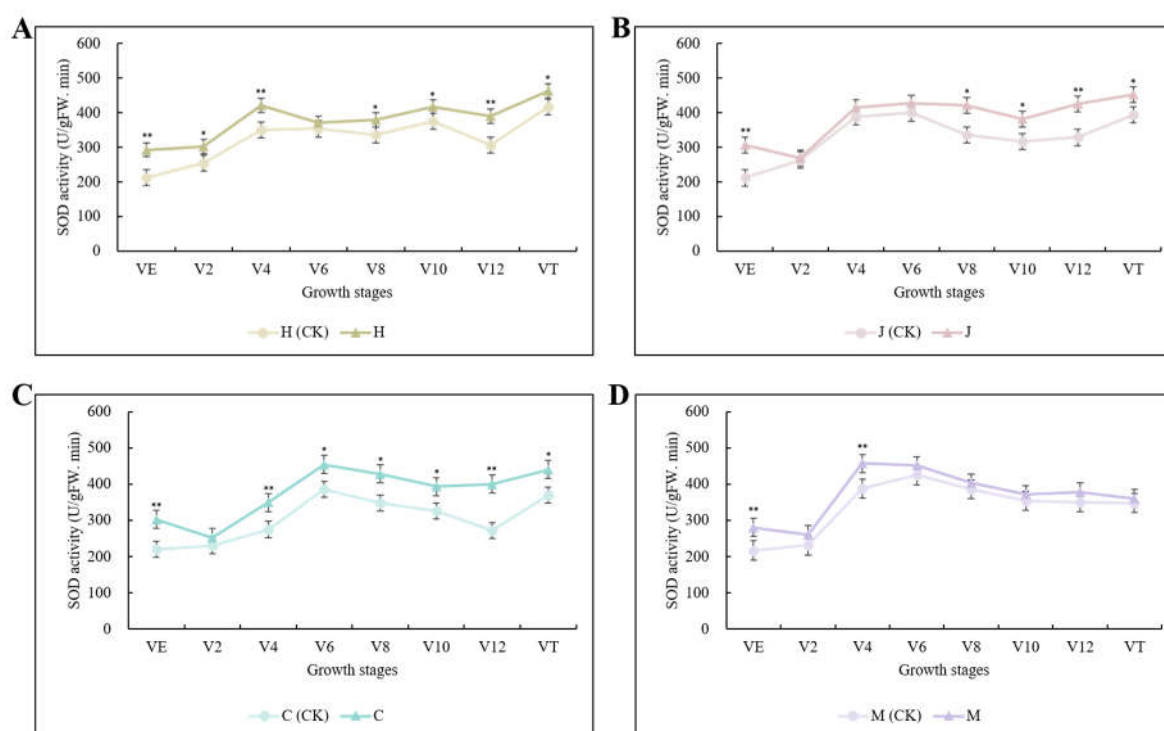


Figure S2. Changes of SOD activity in three typical maize inbred lines and disease-resistant control inbred line Mo17 at different growth stages Note: A: H (CK) indicate Huangzao4 uninoculated plants; H indicate Huangzao4 inoculated plants; B: J (CK) indicate Jing7 uninoculated plants; J indicate Jing7 inoculated plants; C: C (CK) indicate Chang7-2 uninoculated plants; C indicate Chang7-2 inoculated plants; D: M (CK) indicate Mo17 uninoculated plants; M indicate Mo17 inoculated plants; “*” indicates $p < 0.05$; “***” indicates $p < 0.01$.

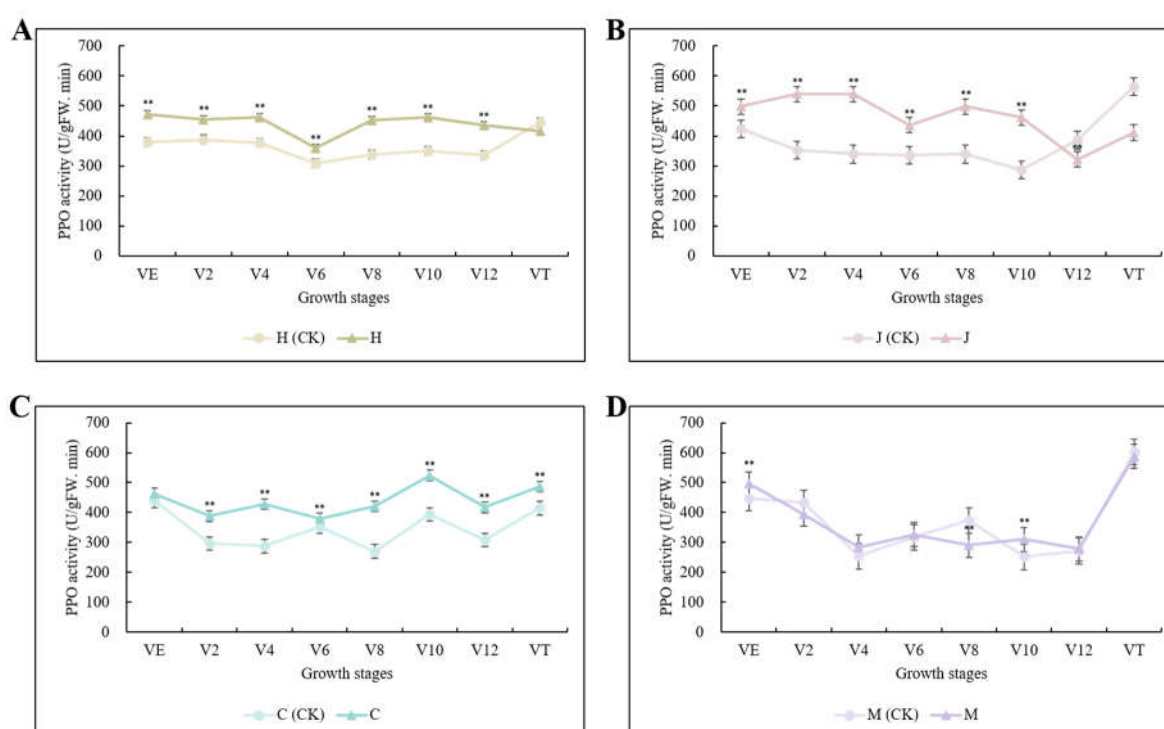


Figure S3. Changes of PPO activity in three typical maize inbred lines and disease-resistant control inbred line Mo17 at different growth stages Note: A: H (CK) indicate Huangzao4 uninoculated plants; H indicate Huangzao4 inoculated plants; B: J (CK) indicate Jing7 uninoculated plants; J indicate Jing7 inoculated plants; C: C (CK) indicate Chang7-2 uninoculated plants; C indicate Chang7-2 inoculated

plants; D: M (CK) indicate Mo17 uninoculated plants; M indicate Mo17 inoculated plants; “**” indicates $p < 0.01$.

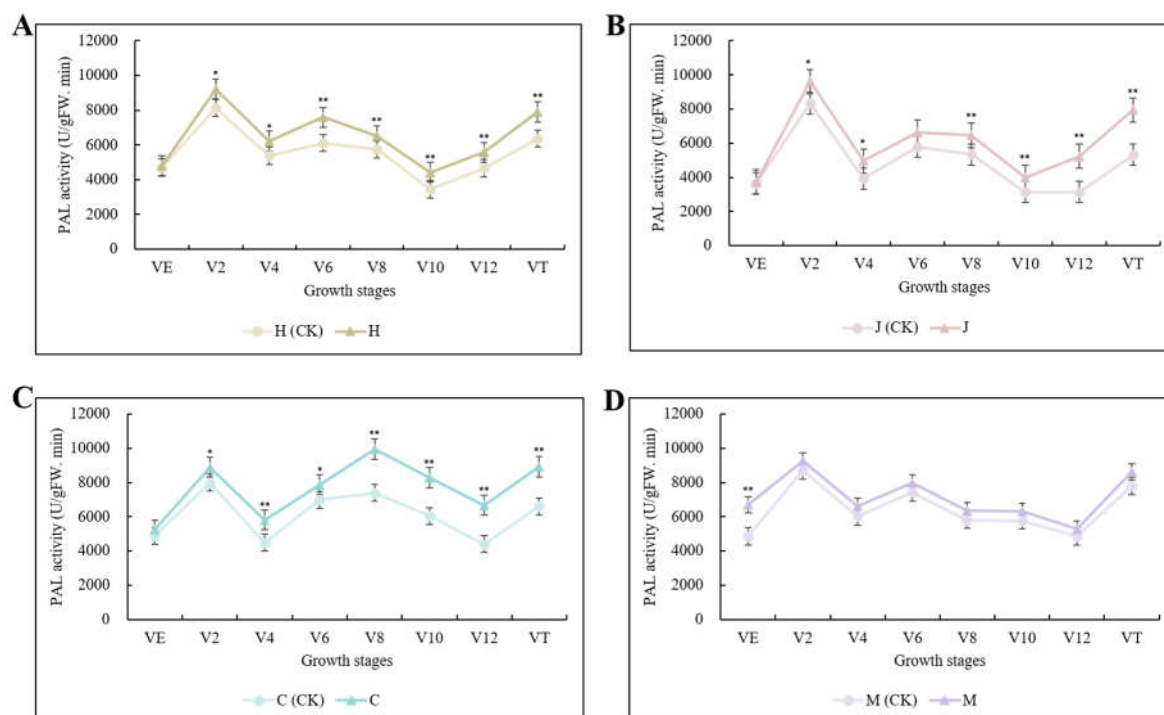


Figure S4. Changes of PAL activity in three typical maize inbred lines and disease-resistant control inbred line Mo17 at different growth stages Note: A: H (CK) indicate Huangzao4 uninoculated plants; H indicate Huangzao4 inoculated plants; B: J (CK) indicate Jing7 uninoculated plants; J indicate Jing7 inoculated plants; C: C (CK) indicate Chang7-2 uninoculated plants; C indicate Chang7-2 inoculated plants; D: M (CK) indicate Mo17 uninoculated plants; M indicate Mo17 inoculated plants; “*” indicates $p < 0.05$; “**” indicates $p < 0.01$.

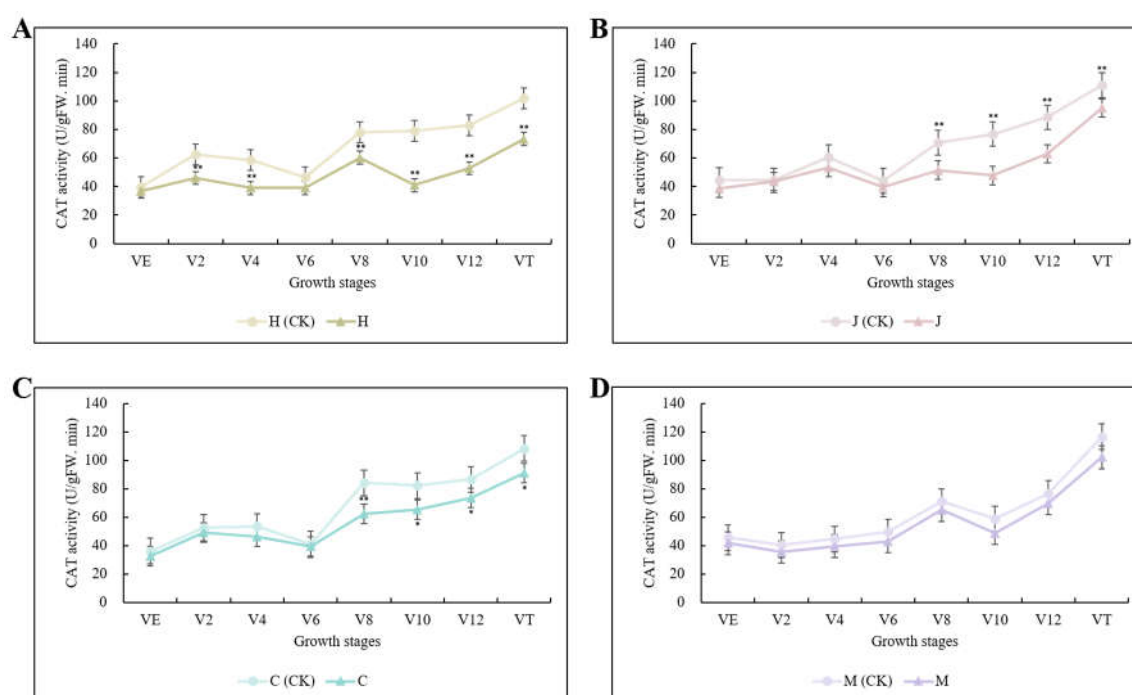


Figure S5. Changes of CAT activity in three typical maize inbred lines and disease-resistant control inbred line Mo17 at different growth stages Note: A: H (CK) indicate Huangzao4 uninoculated plants;

H indicate Huangzao4 inoculated plants; B: J (CK) indicate Jing7 uninoculated plants; J indicate Jing7 inoculated plants; C: C (CK) indicate Chang7-2 uninoculated plants; C indicate Chang7-2 inoculated plants; D: M (CK) indicate Mo17 uninoculated plants; M indicate Mo17 inoculated plants; “*” indicates $p<0.05$; “**” indicates $p<0.01$.