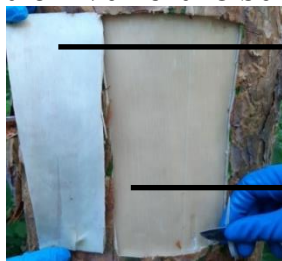


(a)



(b)

For molecular genetic analysis «windows» were cut out of the trunk and the bark was separated from the wood.

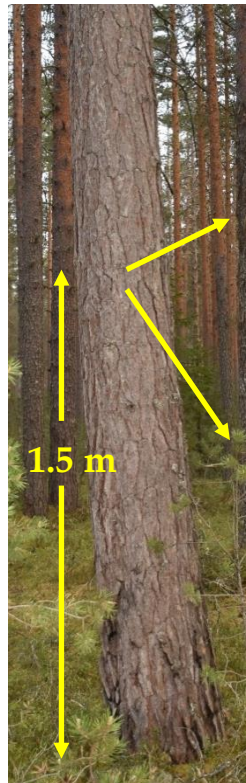


Fraction 1, prepared from the bark side, included cells of non-conductive phloem, fully formed early phloem, differentiating late phloem, and cambial zone.

Fraction 2, prepared from the debarked trunk surface, included differentiating early xylem cells.



For microscopic analysis blocks (1 x 1 x 0.8 cm, length x width x height) were cut out of the trunk.



Supplementary Materials: Figure S4

The appearance of a 70- (Plot 9), 80- (Plot 1), 30- (Plot 4) and 180- (Plot 3) year-old lingonberry pine forest (a). Trunk tissue sampling plan for molecular genetics and microscopic analysis (b).