

Figure S1. The effects of compounds from *B. oleracea* L. (1-8) and Tribenuron Methyl® on *L. sativa* Linn. germination and seedling growth.

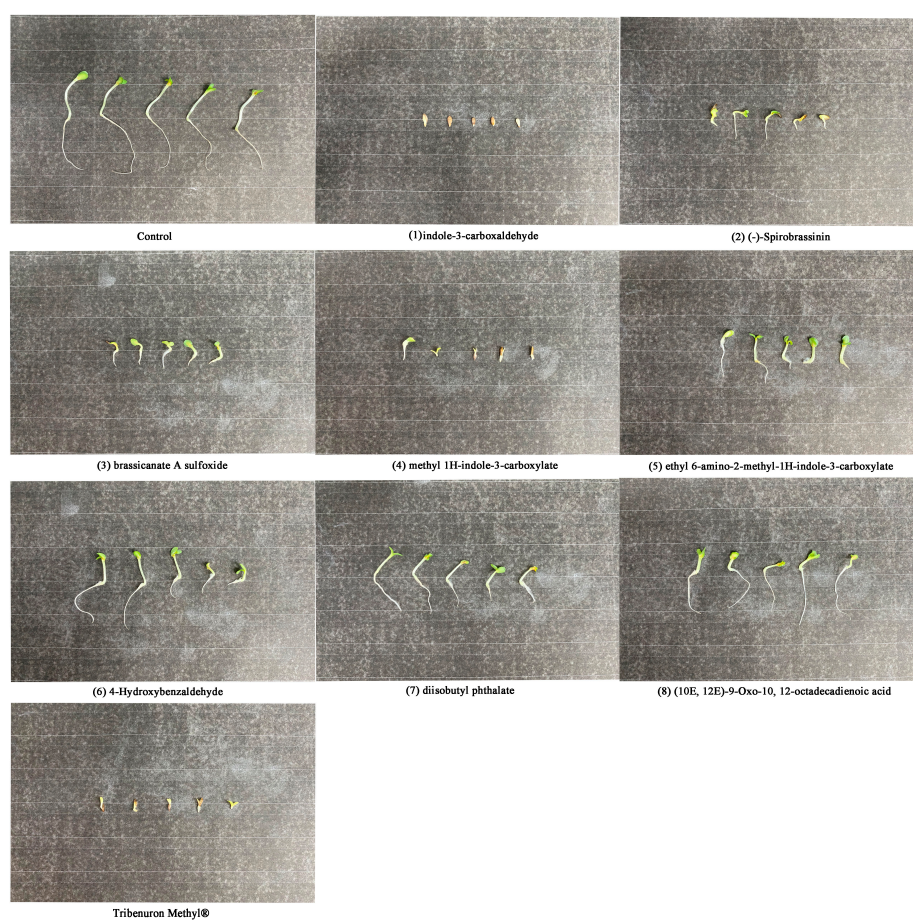


Figure S2. The effects of compounds from *B. oleracea* L. (1-8) and Tribenuron Methyl® on *L. sativa* Linn. seedling growth.

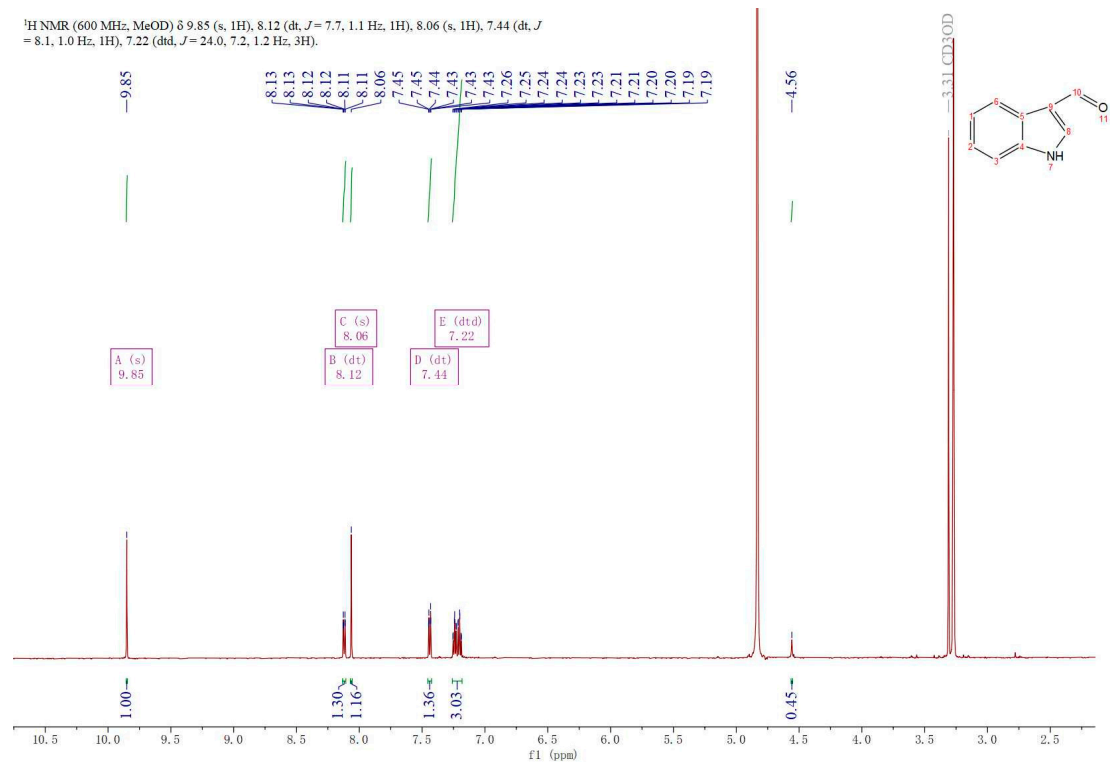


Figure S3. ¹H NMR of compound 1

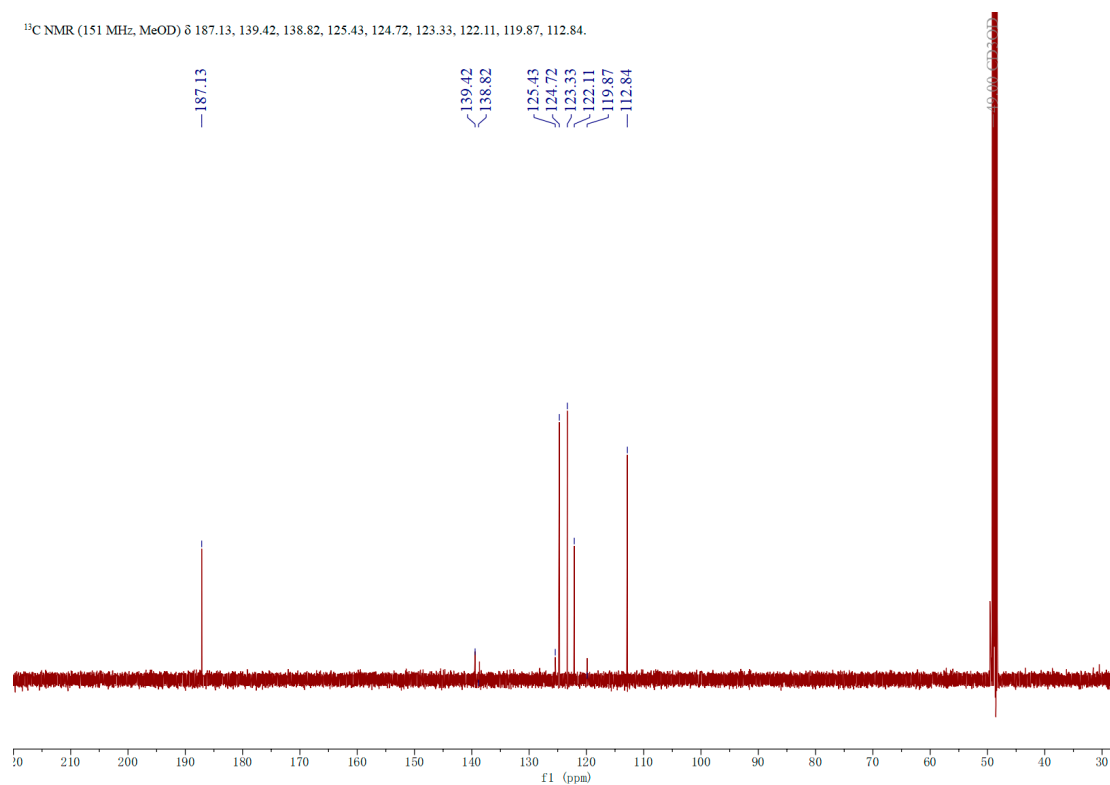


Figure S4. ¹³C NMR of compound 1

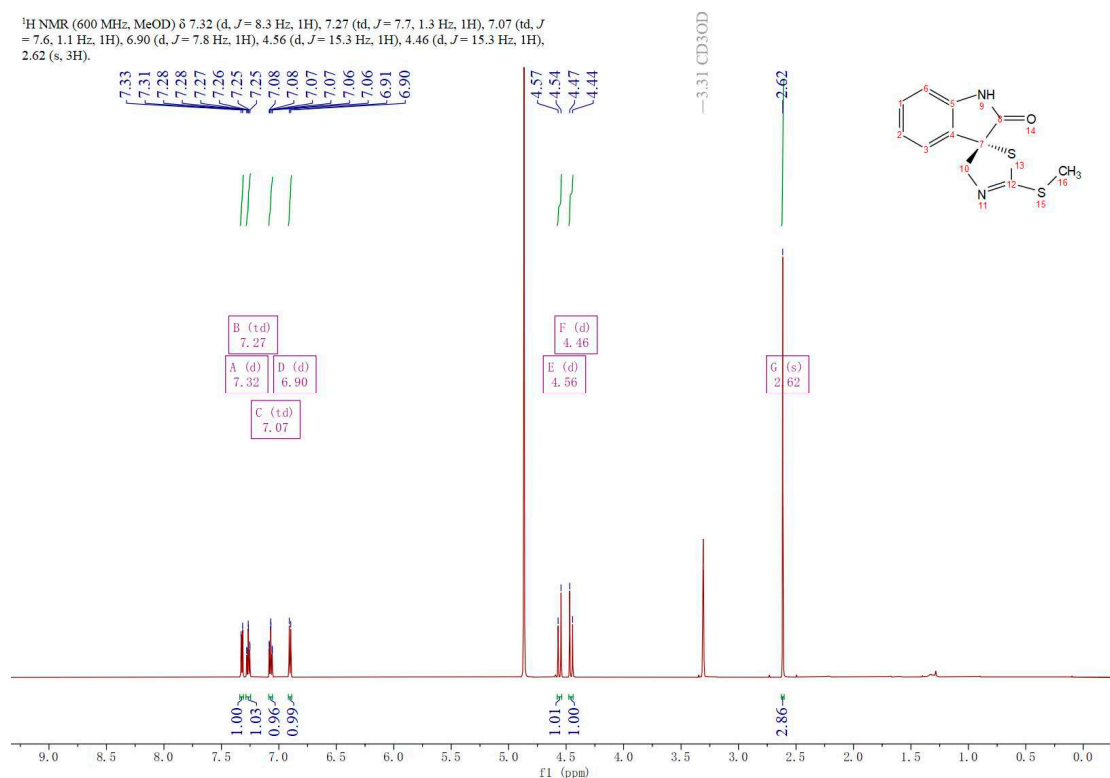


Figure S5. ^1H NMR of compound 2

^{13}C NMR (600 MHz, MeOD) δ 179.56, 166.37, 141.91, 132.00, 130.77, 125.09, 124.25, 111.26, 75.40, 65.75, 15.56.

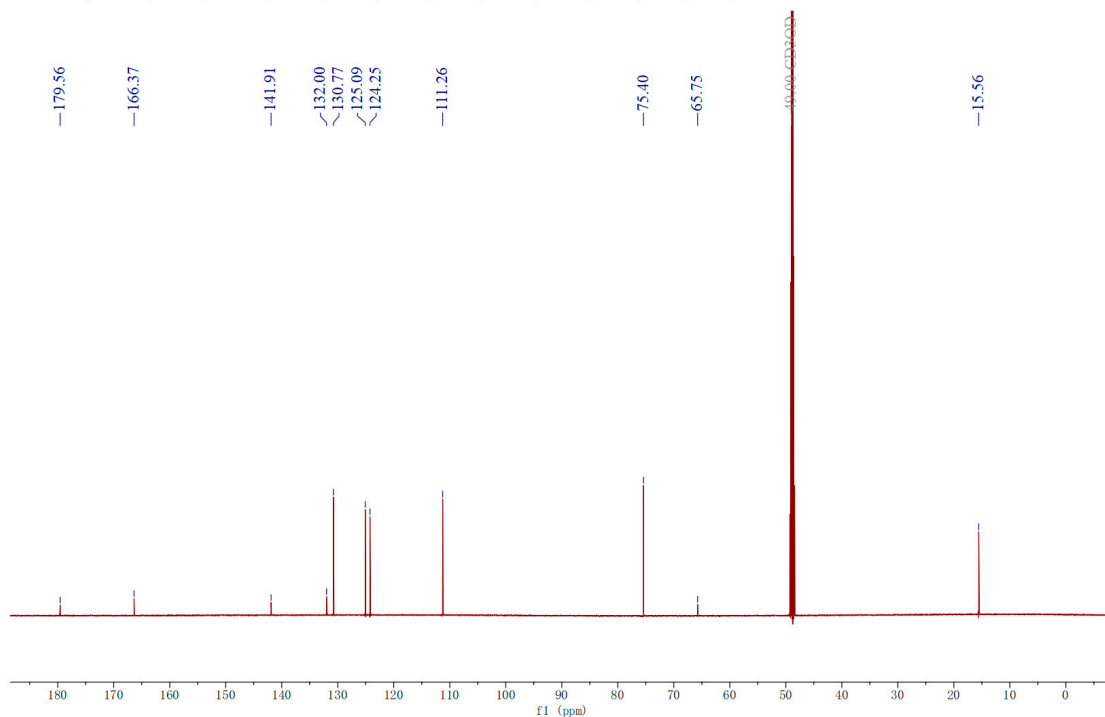


Figure S6. ^{13}C NMR of compound 2

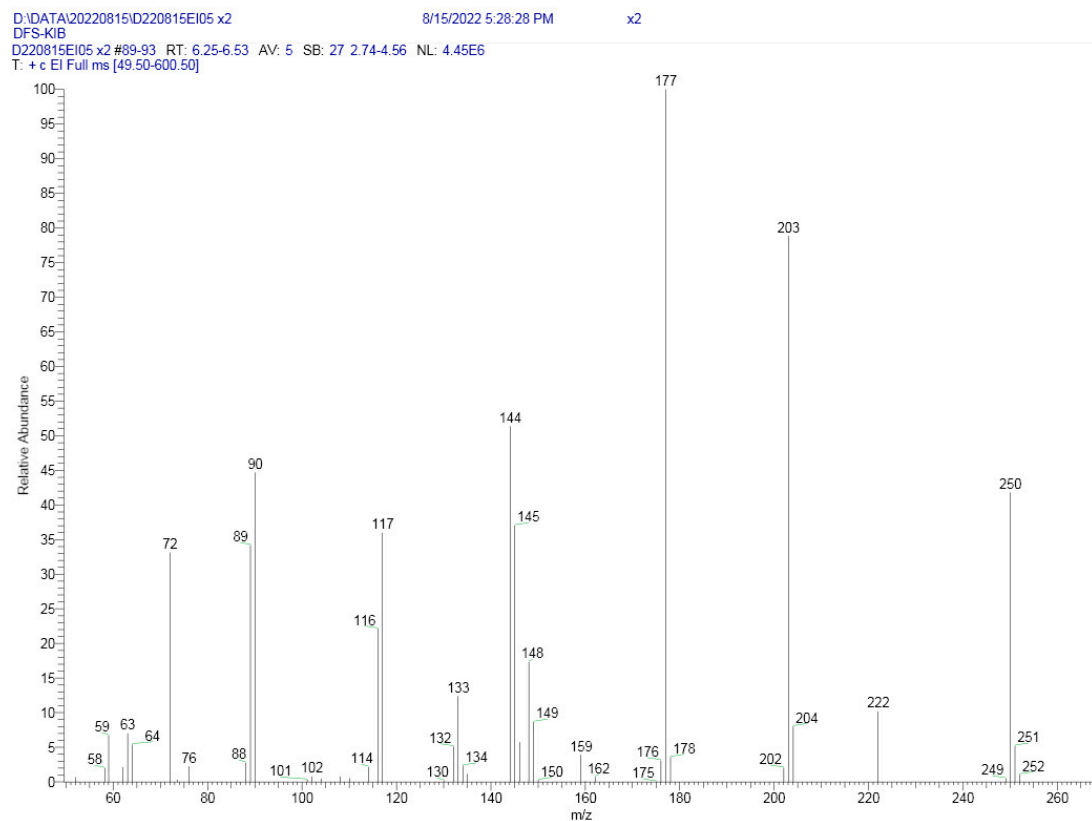


Figure S7. EI-MS of compound 2

Rudolph Research Analytical

This sample was measured on an Autopol VI, Serial #91058
 Manufactured by Rudolph Research Analytical, Hackettstown, NJ, USA.

Measurement Date : Tuesday, 16-AUG-2022

Set Temperature : 25.0

Time Delay : Disabled

Delay between Measurement : Disabled

n	Average	Std.Dev.	% RSD	Maximum	Minimum					
5	-68.42	0.35	-0.51	-67.92	-68.75					
S.No	Sample ID	Time	Result	Scale	OR °Arc	WLG.nm	Lg.mm	Conc.g/100ml	Temp.	
1	X2	06:39:24 PM	-68.75	SR	-0.330	589	100.00	0.480	24.9	
2	X2	06:39:30 PM	-68.75	SR	-0.330	589	100.00	0.480	24.9	
3	X2	06:39:36 PM	-68.33	SR	-0.328	589	100.00	0.480	24.9	
4	X2	06:39:42 PM	-68.33	SR	-0.328	589	100.00	0.480	24.9	
5	X2	06:39:49 PM	-67.92	SR	-0.326	589	100.00	0.480	24.9	

Figure S8. specific rotation of compound 2

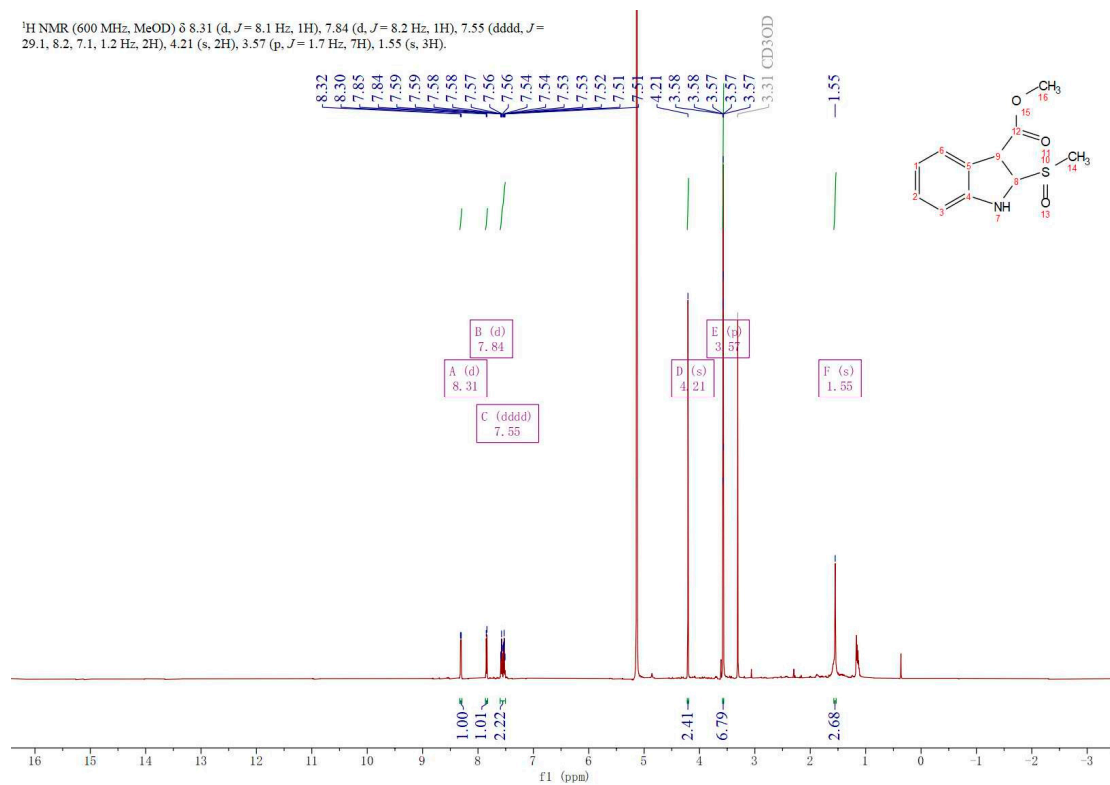


Figure S9. ¹H NMR of compound 3

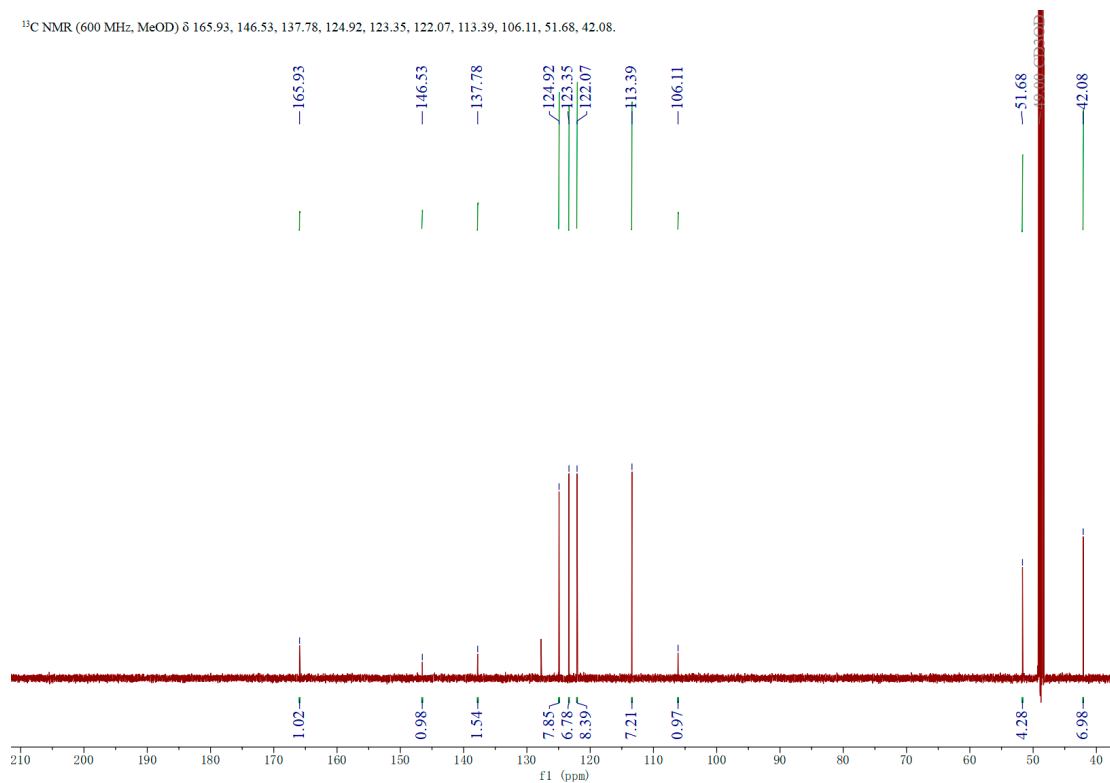


Figure S10. ¹³C NMR of compound 3

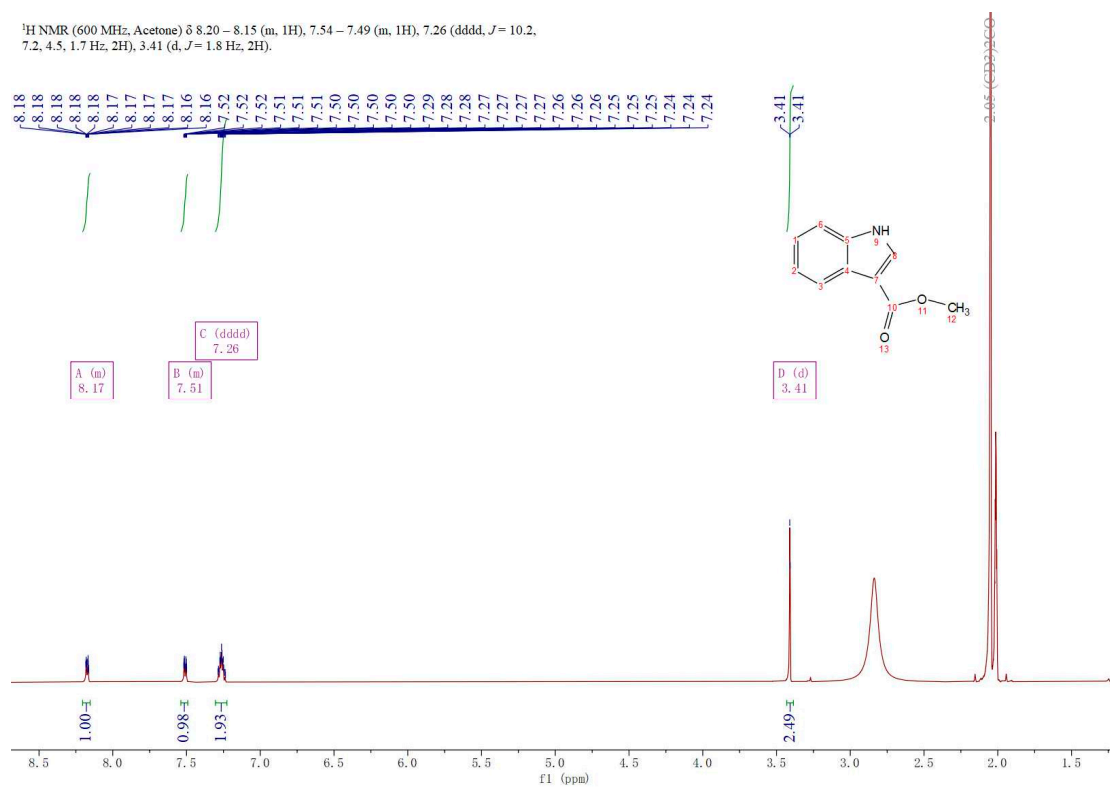


Figure S11. ¹H NMR of compound 4

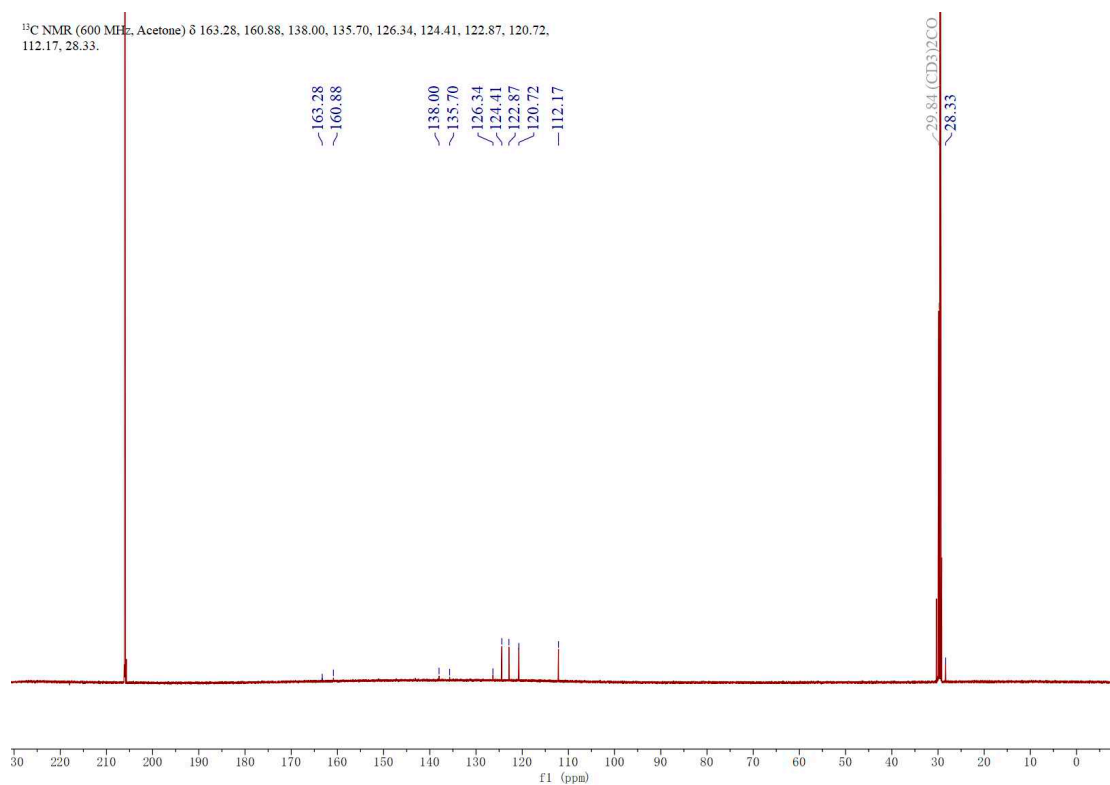


Figure S12. ¹³C NMR of compound 4

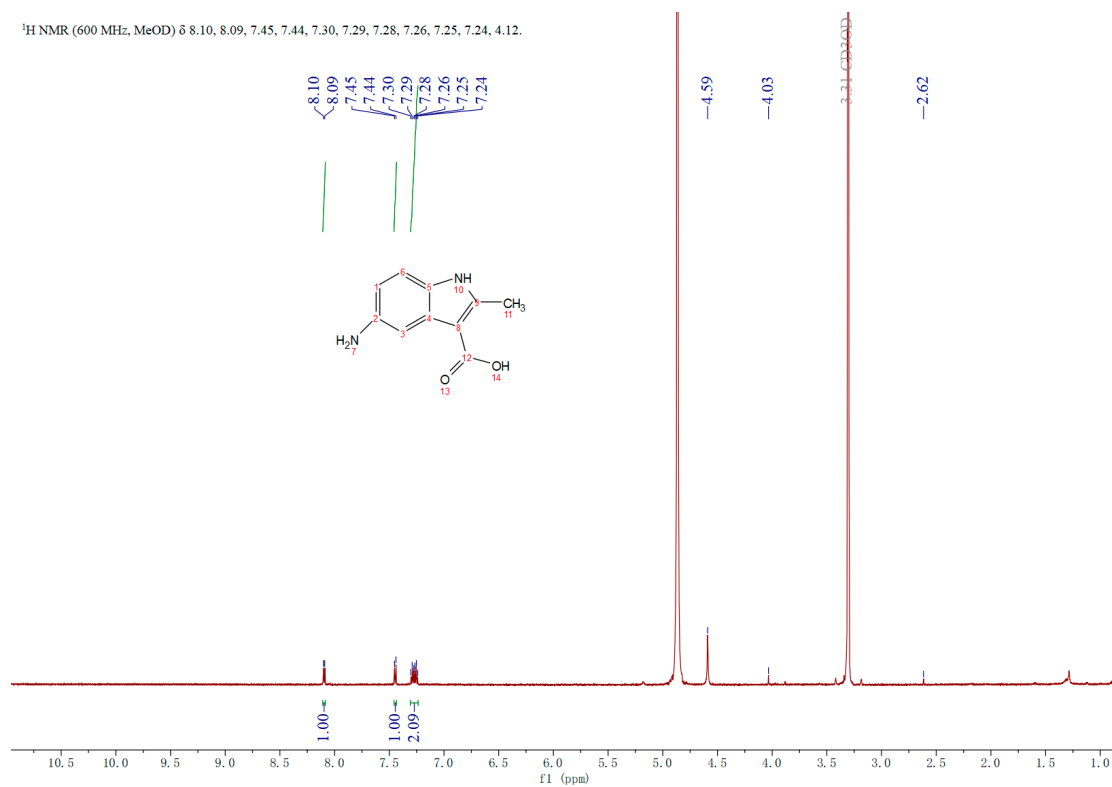


Figure S13. ^1H NMR of compound 5

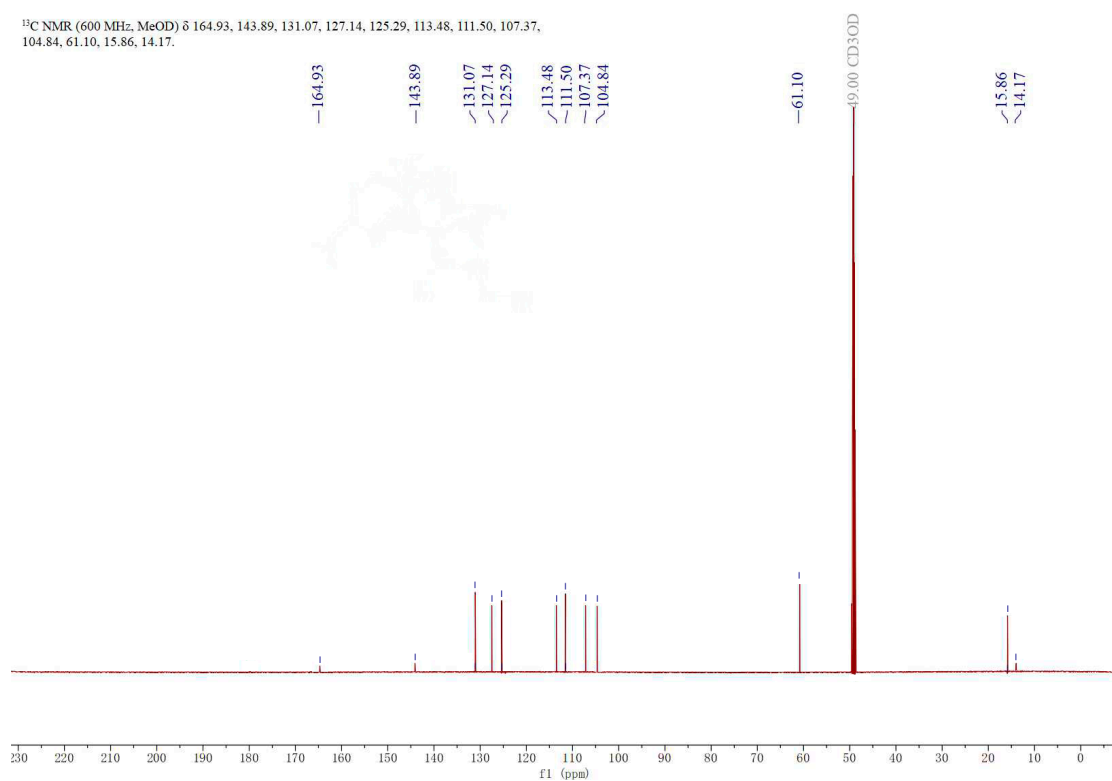


Figure S14. ^{13}C NMR of compound 5

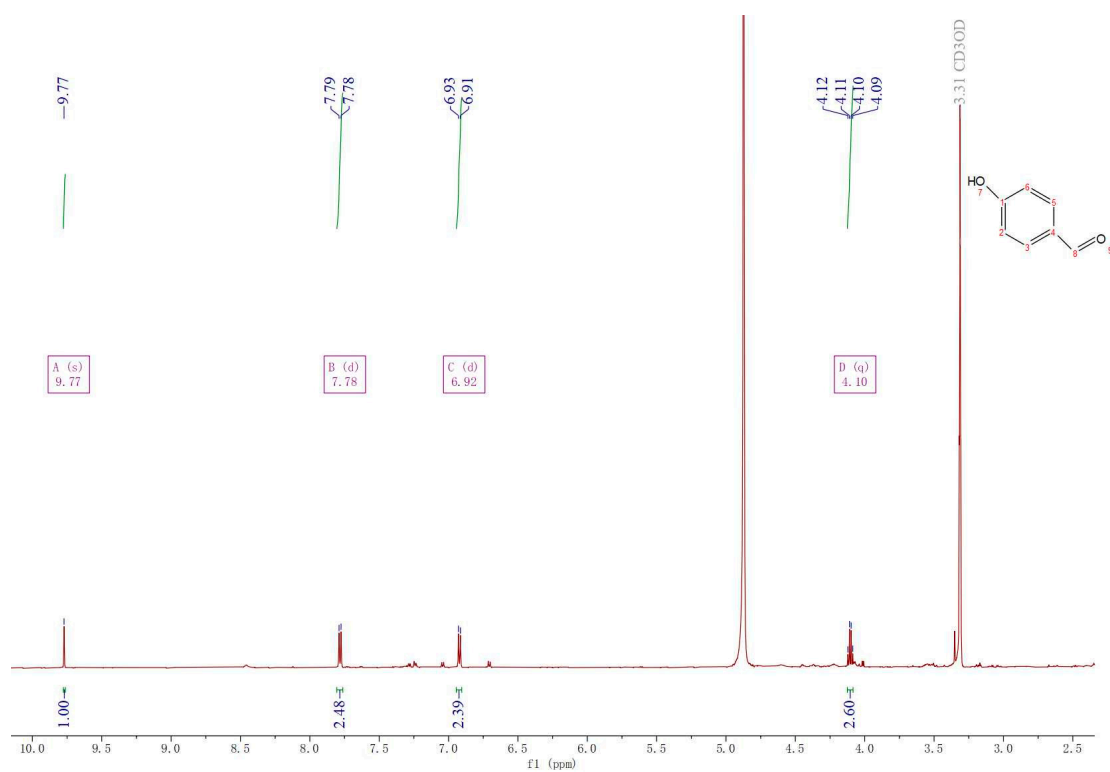


Figure S15. ¹H NMR of compound 6

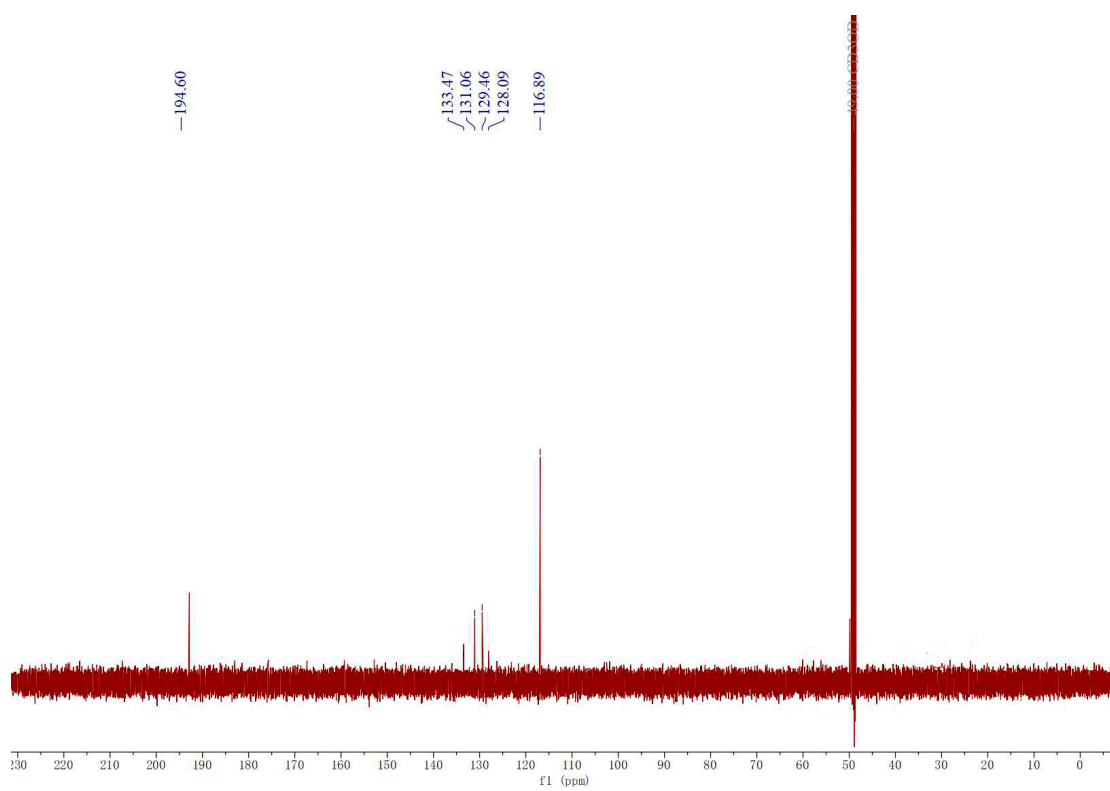


Figure S16. ¹³C NMR of compound 6

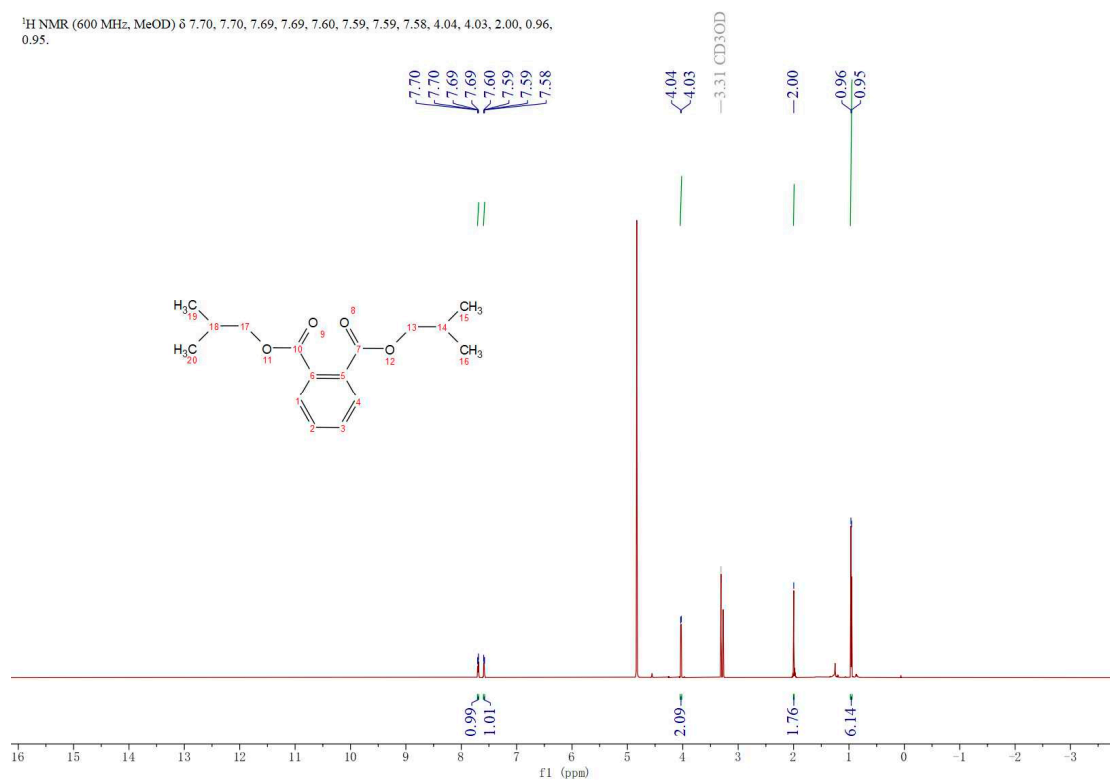


Figure S17. ¹H NMR of compound 7

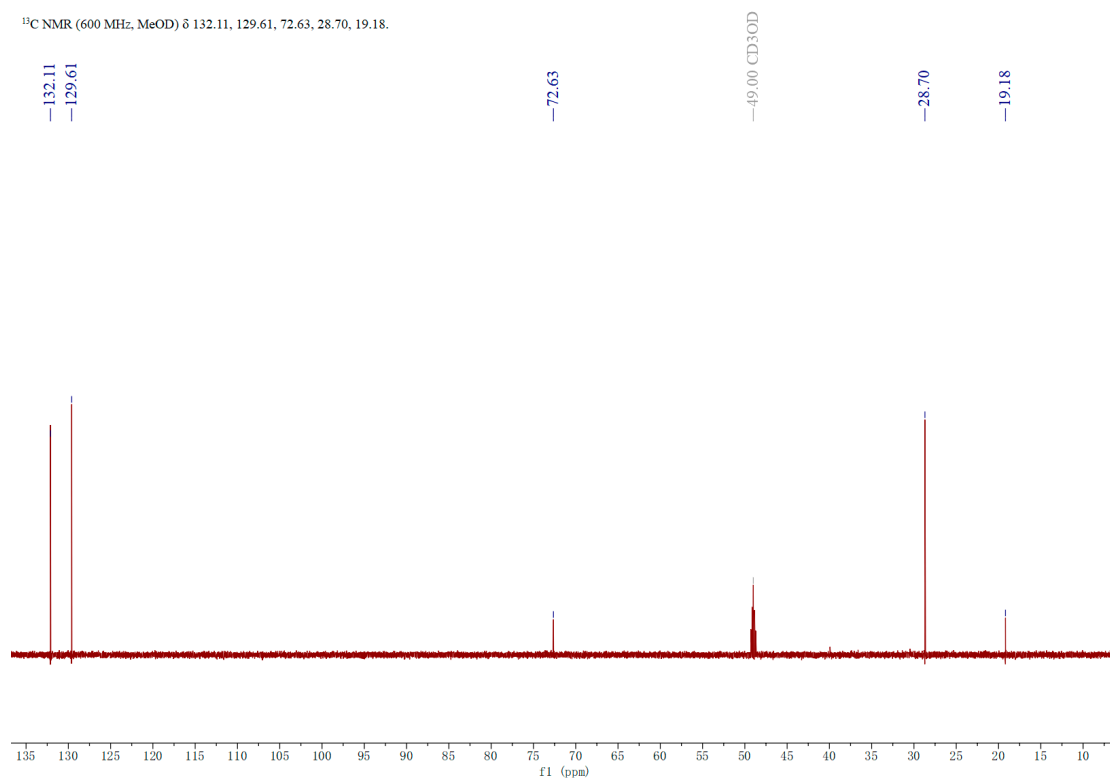


Figure S18. ¹³C NMR of compound 7

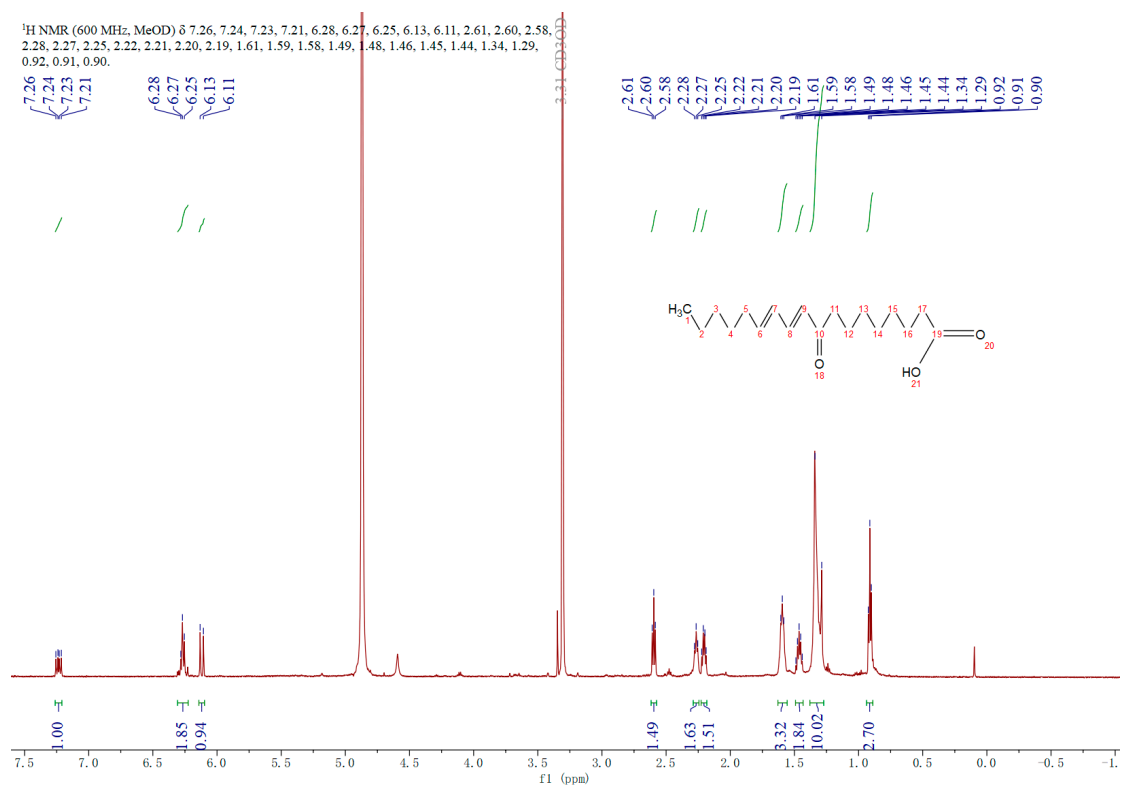


Figure S19. ¹H NMR of compound 8

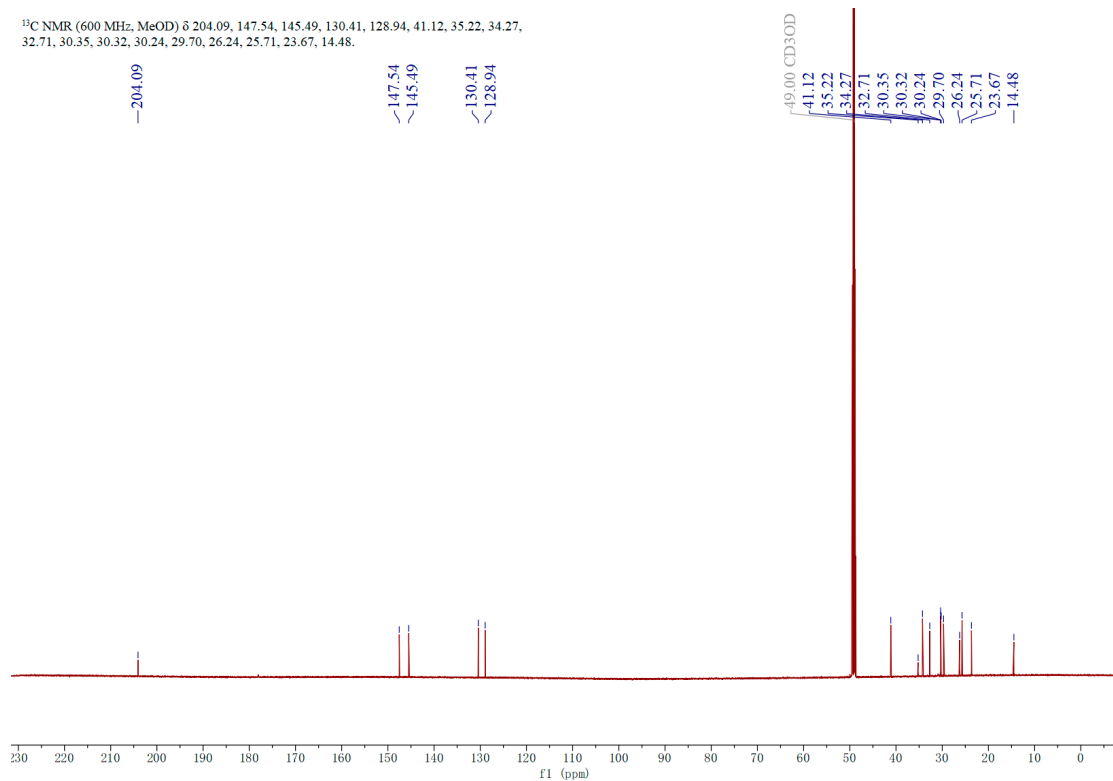


Figure S20. ¹³C NMR of compound 8

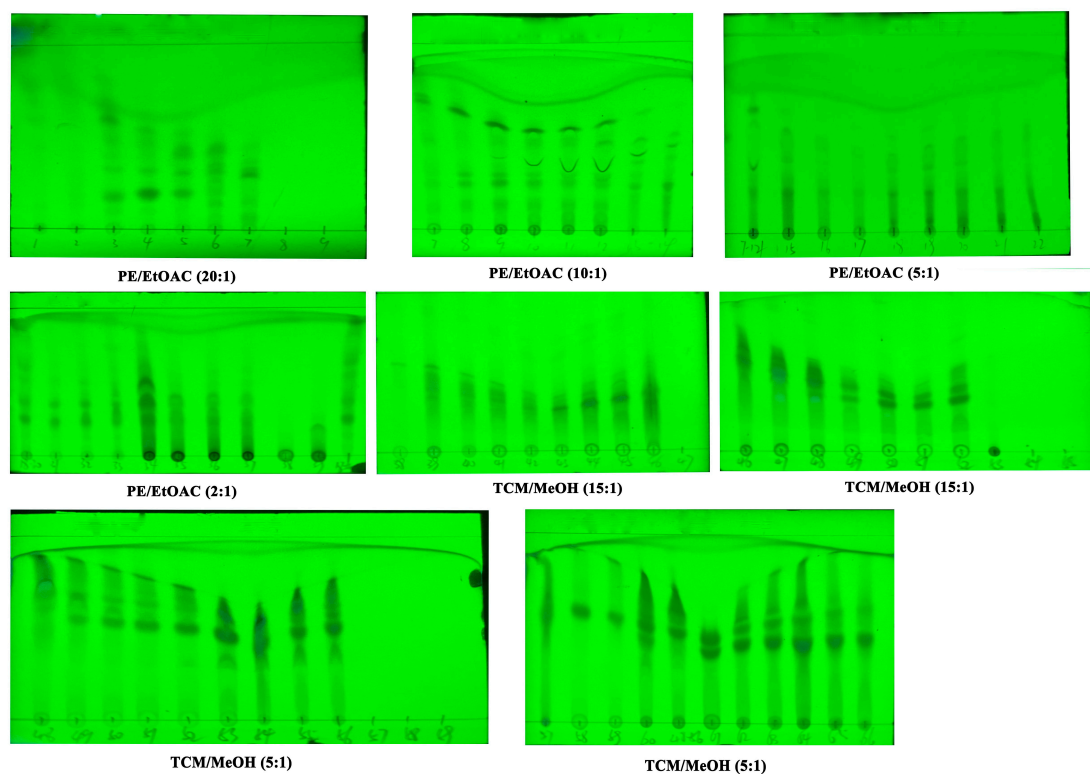


Figure S21. Thin Layer Chromatography (TLC) chromatogram of fractions

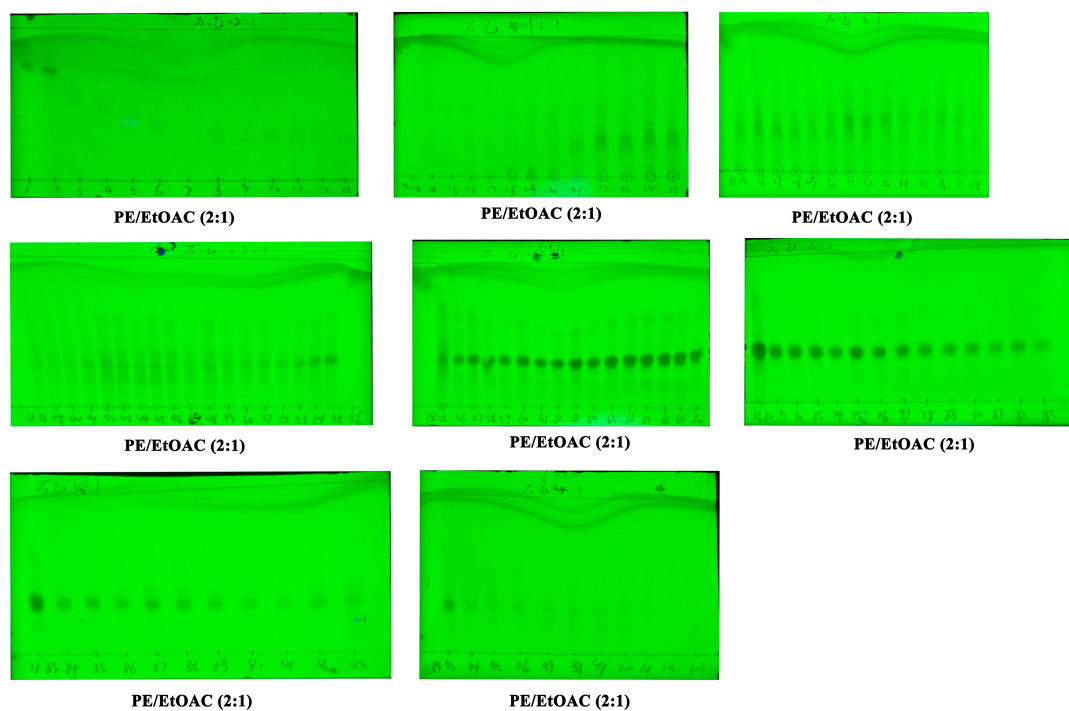


Figure S21. Thin Layer Chromatography (TLC) chromatogram of subfractions