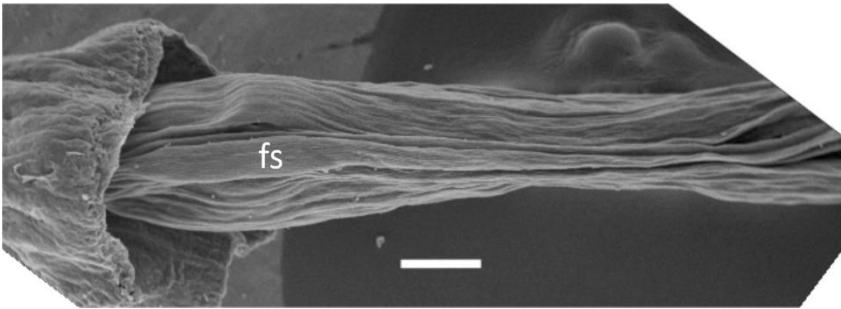
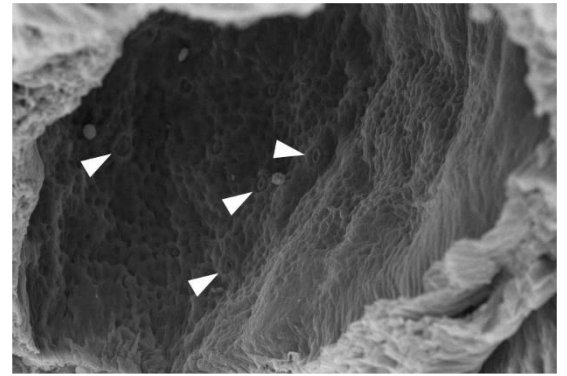


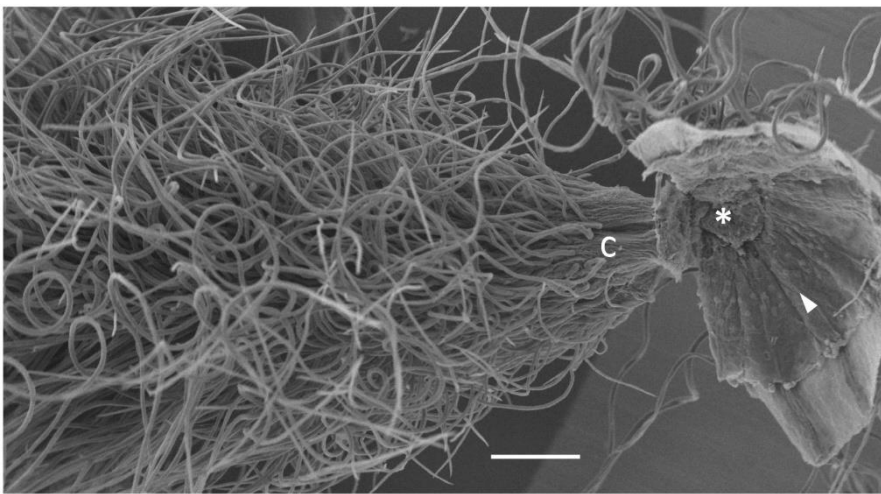
SUPPLEMENT 1. SEM IMAGES OF ANDROECIA AND NECTARIES OF STUDIED REPRESENTATIVES OF THE IRLC



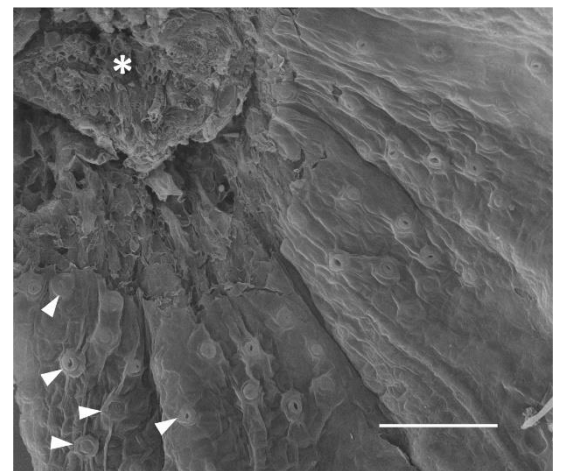
Alhagi maurorum, stamens (view from the adaxial side, receptacle is to the left); fs = free stamen. Scale bar: 300 µm.



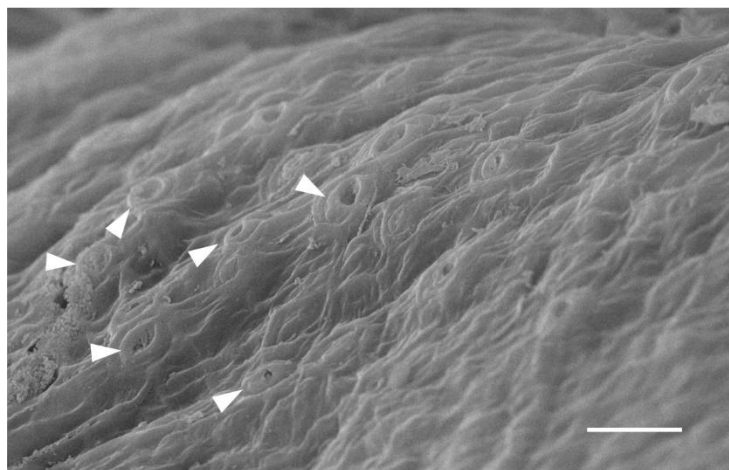
A. maurorum, nectariferous stomata (arrowheads). Scale bar: 100 µm.



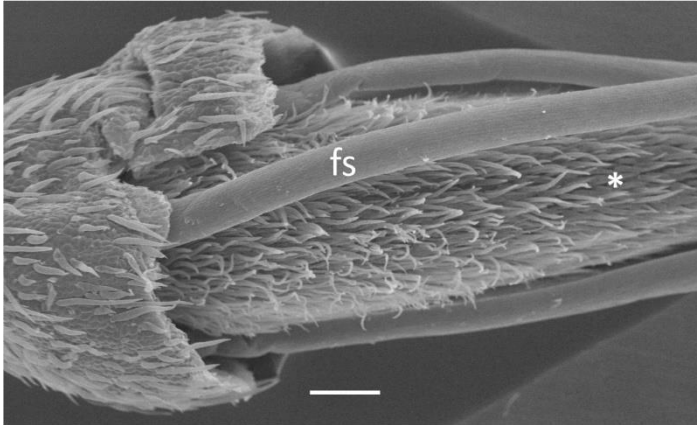
Astragalus albispinus (abnormal specimen), base of carpel (c) + portion of receptacle and hypanthium (view from the abaxial side). Asterisk = place where carpel was attached, arrowhead = secretory area on hypanthium. Scale bar: 300 µm.



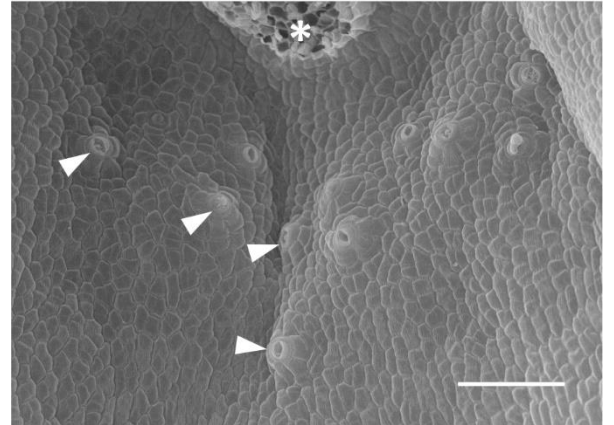
A. albispinus (abnormal specimen), nectariferous stomata on receptacle and hypanthium (arrowheads). Asterisk = place where carpel was attached. Scale bar: 100 µm.



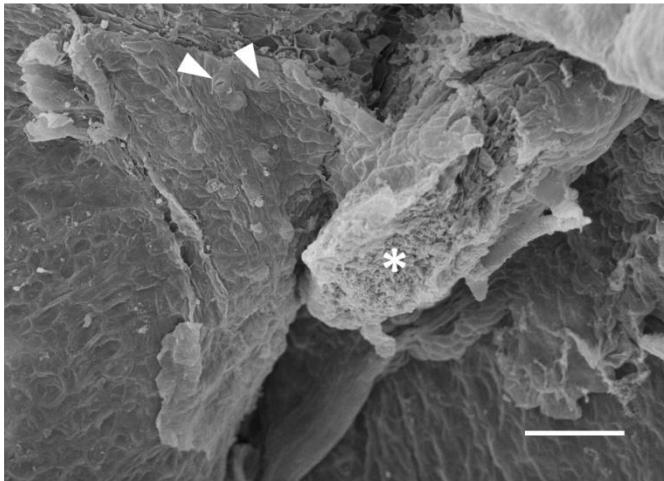
Astragalus caspicus, nectariferous stomata on receptacle and hypanthium (arrowheads). Scale bar: 30 µm.



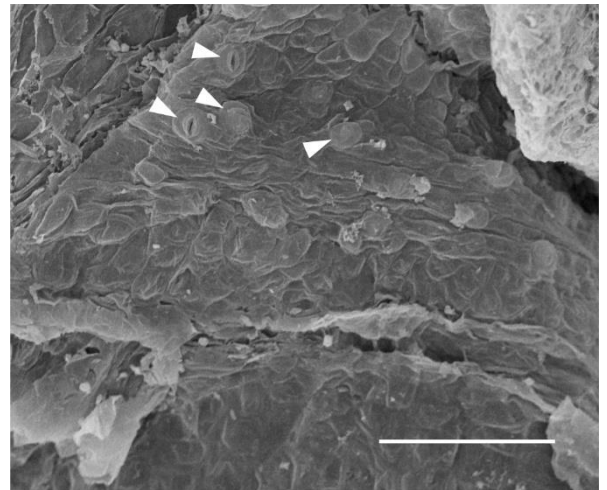
Astragalus cicer, stamens (view from the adaxial side, receptacle is to the left). Asterisk = carpel; fs = free stamen. Scale bar: 300 μ m.



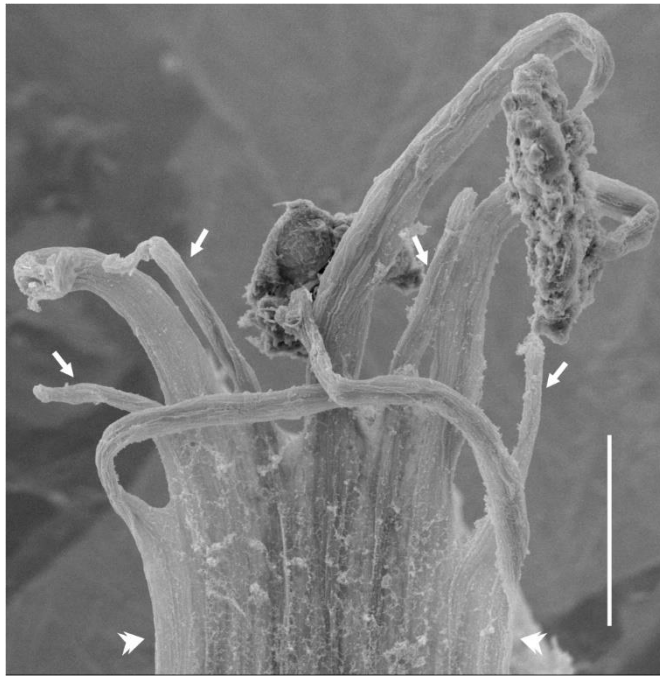
A. cicer, abaxial nectariferous stomata (arrowheads). Asterisk = place where carpel was attached. Scale bar: 100 μ m.



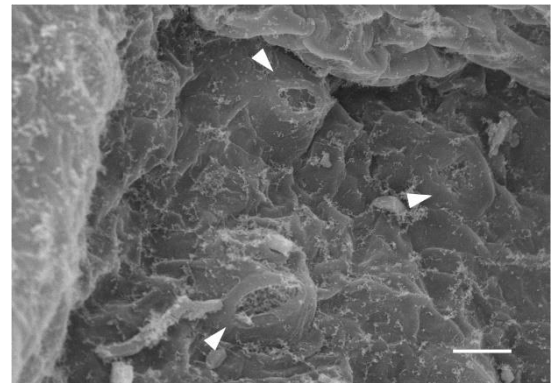
Astragalus epiglottis, abaxial nectariferous stomata (arrowheads). Asterisk = place where carpel was attached. Scale bar: 100 μ m.



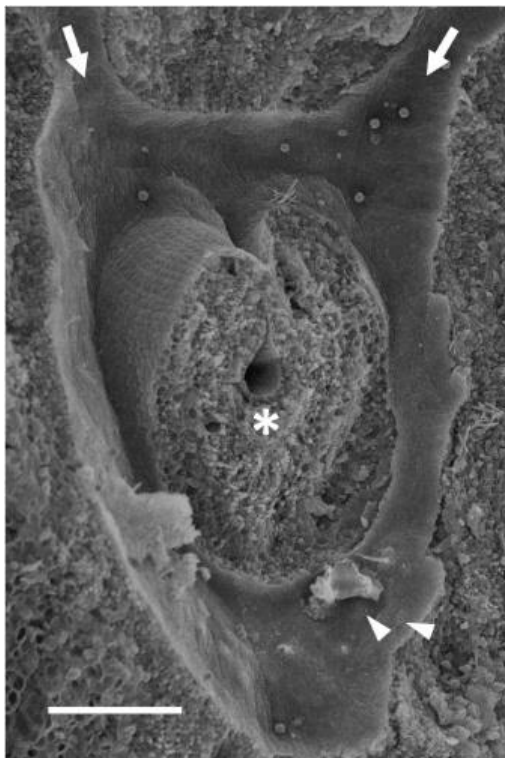
A. epiglottis, abaxial nectariferous stomata (arrowheads); enlarged from the image at left. Scale bar: 100 μ m.



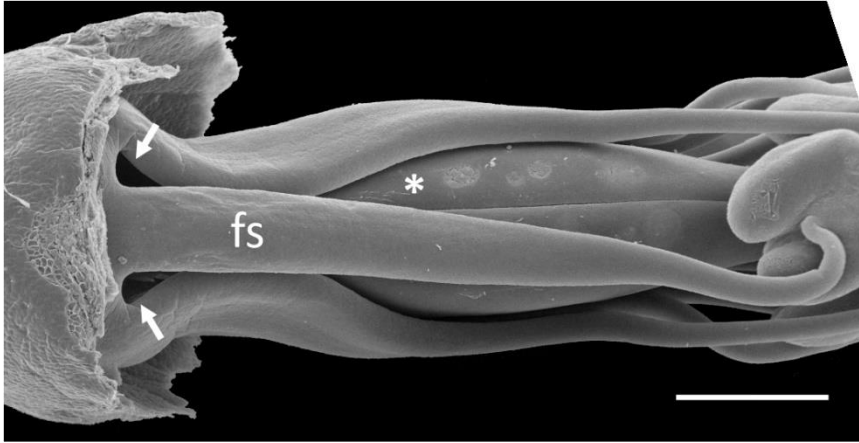
Astragalus pelecinus, staminal whorl unfolded (view from the inner side). Arrows = staminodes, double arrowheads = unfused margins of staminal tube. Scale bar: 300 μm .



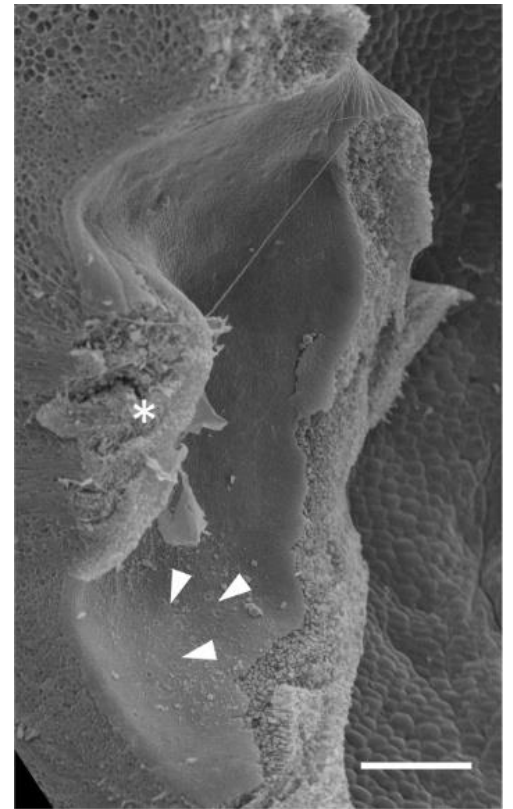
A. pelecinus, nectariferous stomata (arrowheads). Scale bar: 10 μm .



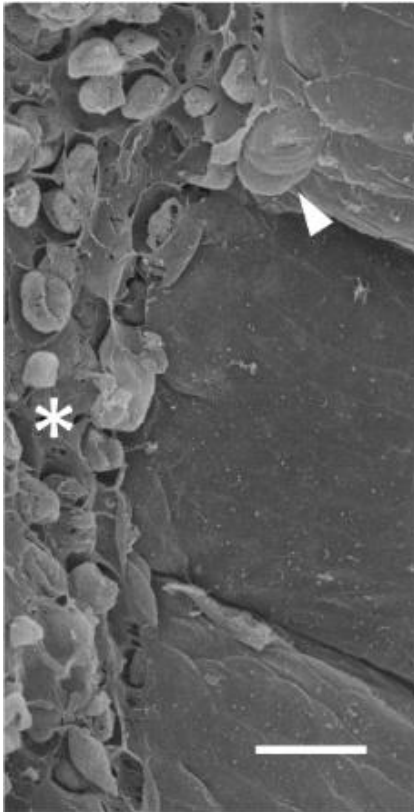
Caragana arborescens, abaxial nectariferous stomata (arrowheads). Asterisk = place where carpel was attached; arrows = fenestrae. Scale bar: 300 μm .



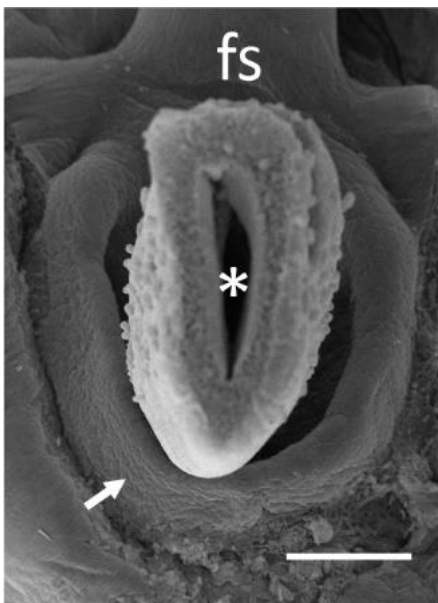
Colutea arborescens, stamens (view from the adaxial side, receptacle is to the left). Arrows = fenestrae. Scale bar: 300 μ m.



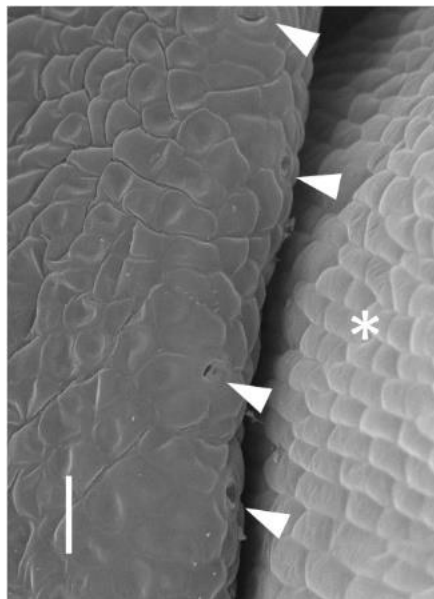
C. arborescens, abaxial nectariferous stomata (arrowheads). Asterisk = place where carpel was attached. Scale bar: 300 μ m.



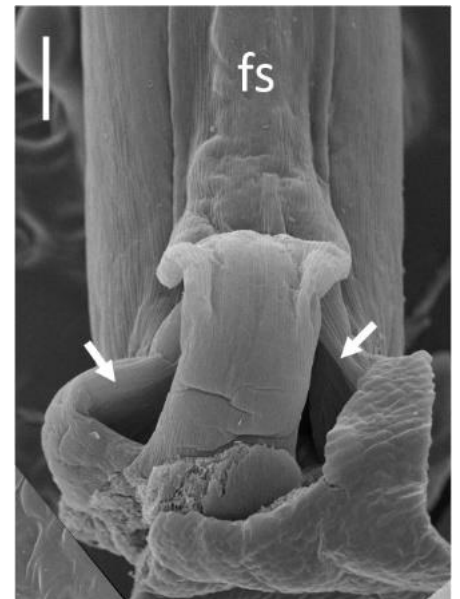
Galega officinalis, nectariferous stoma (arrowhead). Asterisk = place where carpel was attached. Scale bar: 300 μm .



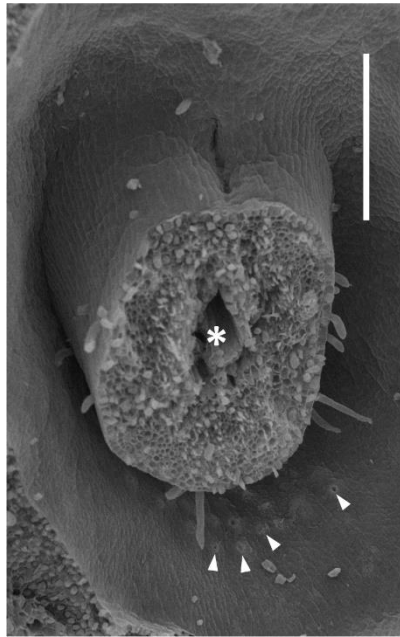
Lathyrus clymenum, nectary (arrow). Asterisk = carpel base; fs = free stamen. Scale bar: 300 μm .



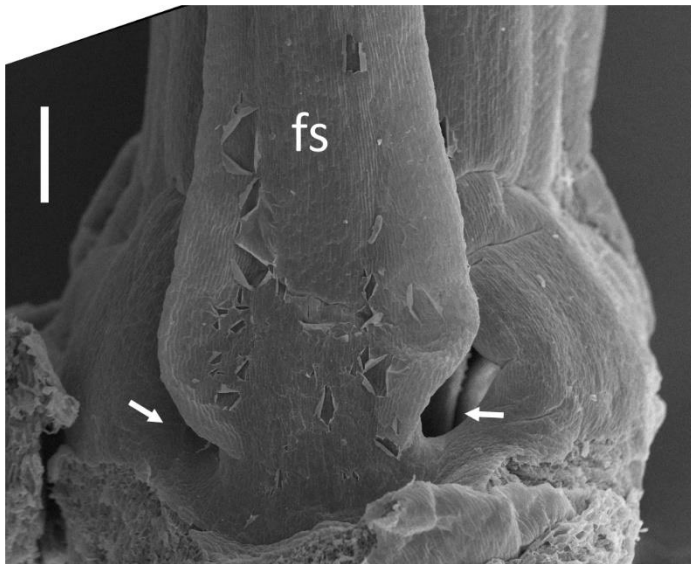
L. clymenum, nectary margin with stomata (arrowheads). Asterisk = carpel base. Scale bar: 30 μm .



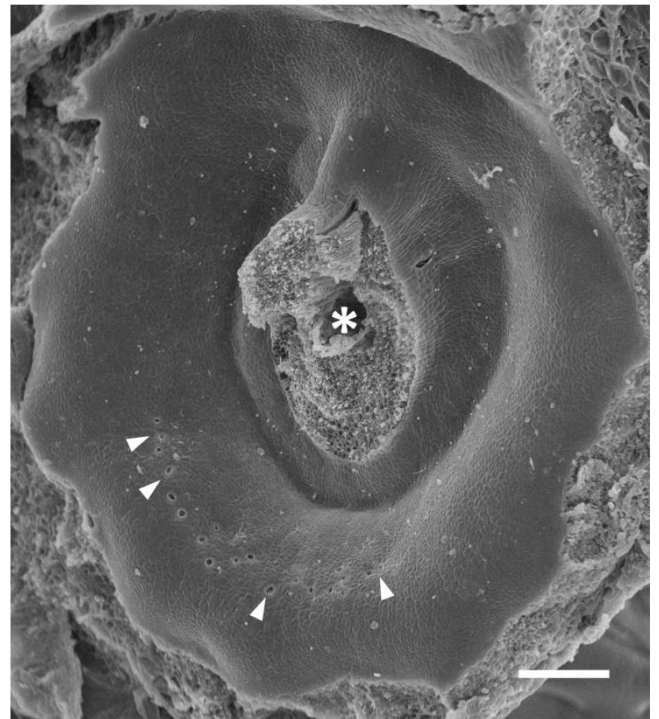
L. clymenum, stamens (view from the adaxial side, receptacle is downwards). Arrows = fenestrae; fs = free stamen. Scale bar: 300 μm .



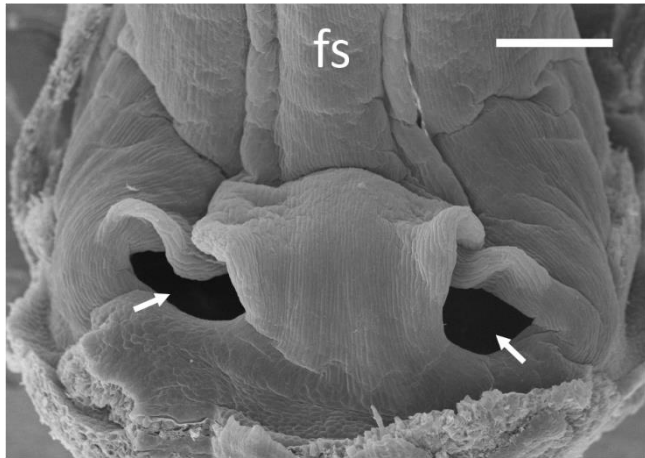
Lathyrus japonicus subsp. *maritimus*, abaxial nectariferous stomata on receptacle (arrowheads). Abaxial side is oriented downwards. Asterisk = carpel base. Scale bar: 300 μ m.



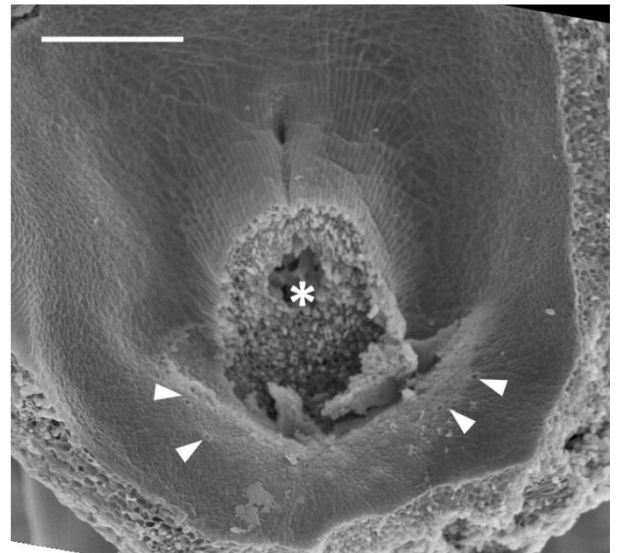
Lathyrus latifolius, stamens (view from the adaxial side, receptacle is downwards). Arrows = fenestrae; fs = free stamen. Scale bar: 300 μ m.



L. latifolius, abaxial nectariferous stomata (arrowheads); abaxial side is downwards. Asterisk = place where carpel was attached. Scale bar: 300 μ m.



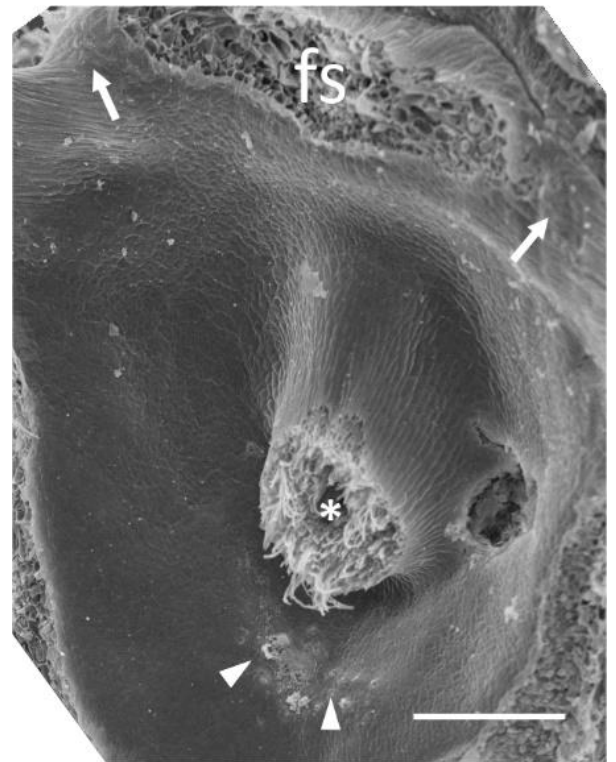
Lathyrus niger, stamens (view from the adaxial side, receptacle is downwards). Arrows = fenestrae; fs = free stamen. Scale bar: 300 μ m.



L. niger, abaxial nectariferous stomata (arrowheads). Asterisk = place where carpel was attached. Scale bar: 300 μ m.



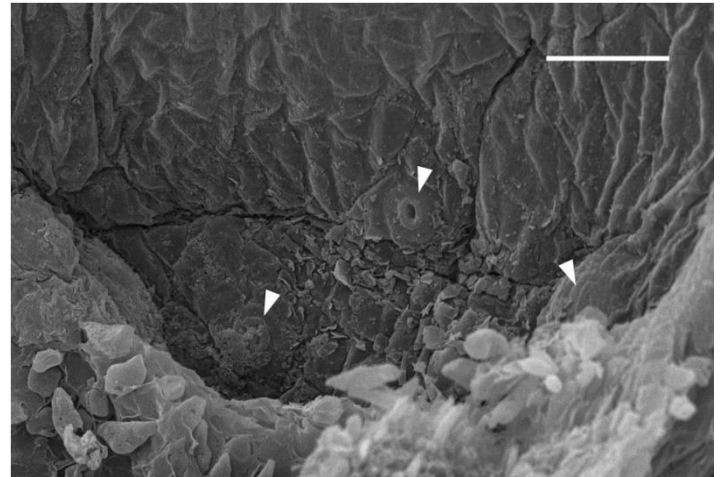
Lathyrus palustris, stamens (view from the adaxial side, receptacle is downwards). Arrows = fenestrae; fs = free stamen. Scale bar: 300 μ m.



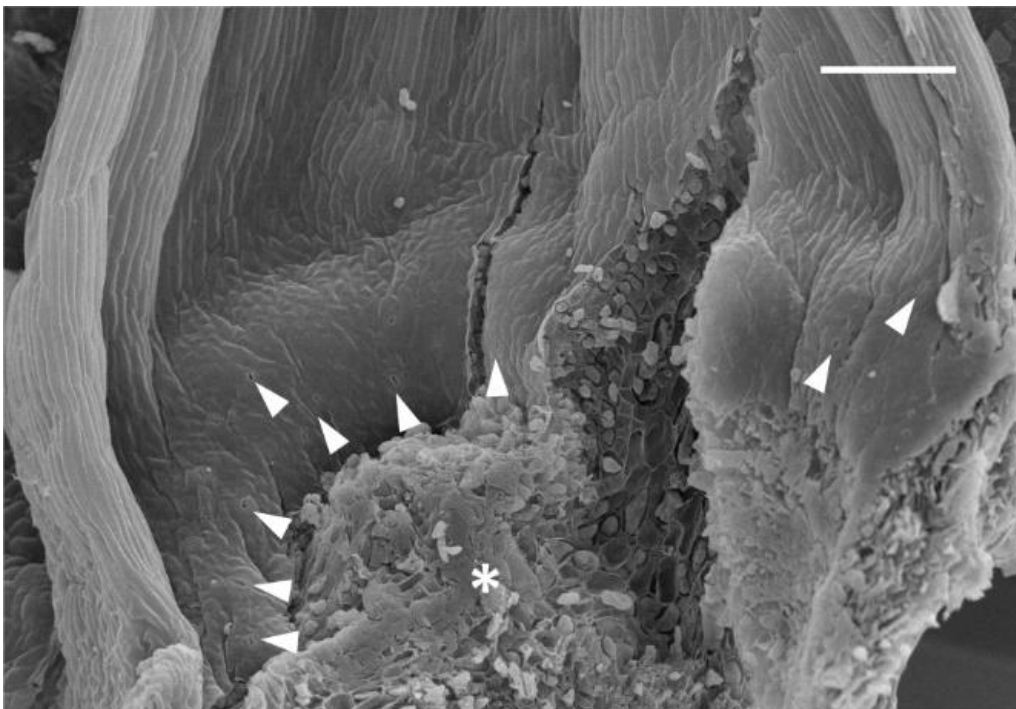
L. palustris, abaxial nectariferous stomata (arrowheads; abaxial side is downwards). Asterisk = place where carpel was attached; arrows = fenestrae; fs = former place of free stamen. Scale bar: 300 μ m.



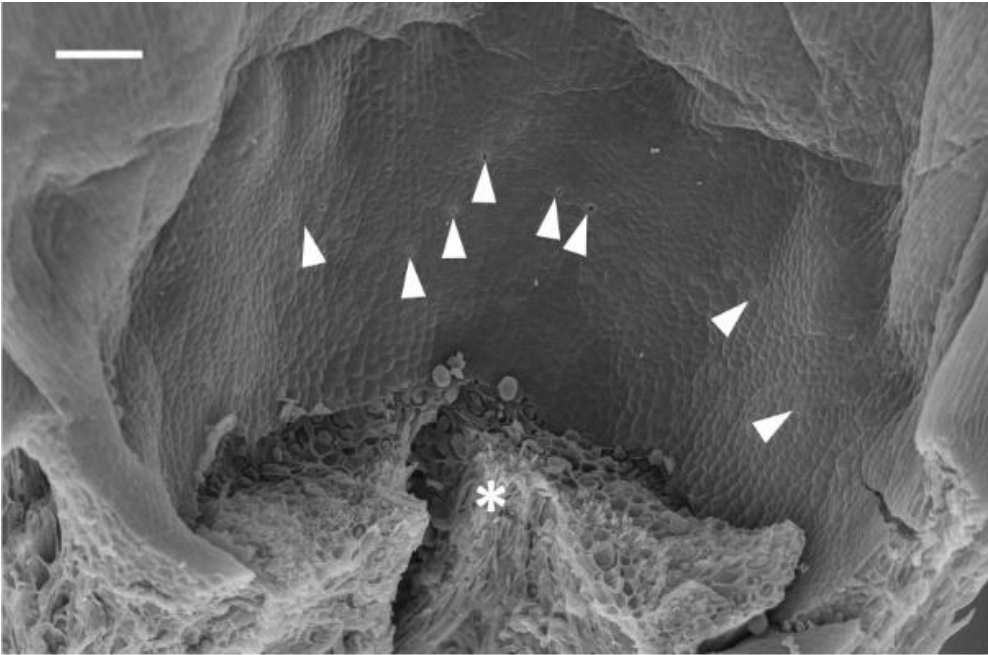
Medicago lupulina, unfolded staminal tube (view from inside to the abaxial side, receptacle is downwards). Scale bar: 300 μm .



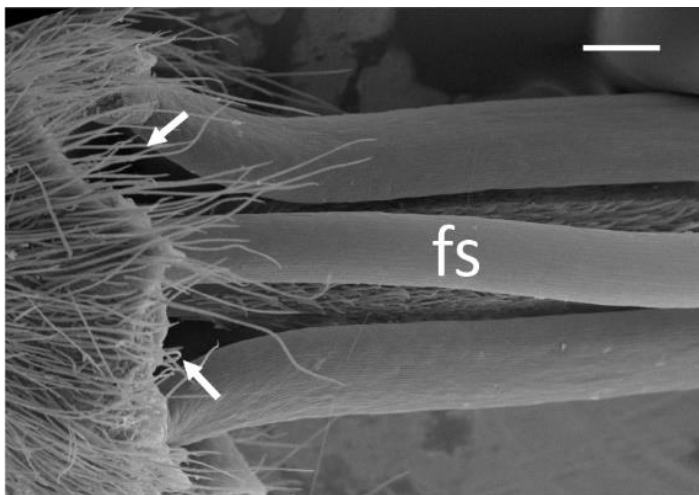
M. lupulina, part of receptacle (enlarged from the same specimen as on left image) with nectariferous stomata (arrowheads). Scale bar: 30 μm .



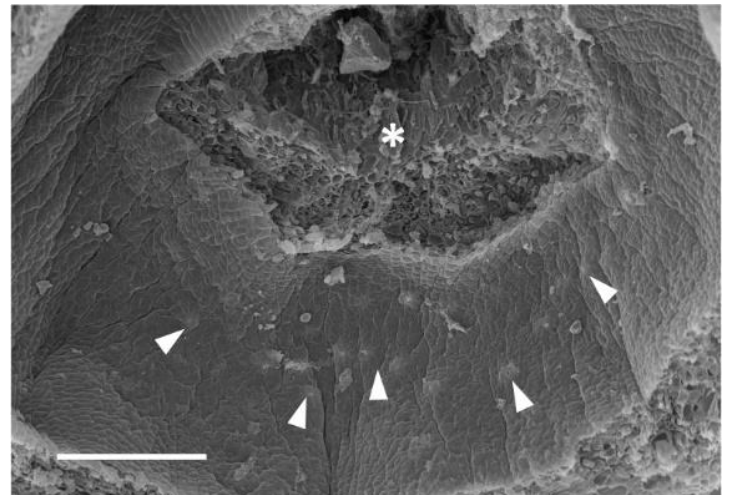
Melilotus officinalis, receptacle and hypanthium (view from inside to the abaxial side, receptacle is downwards, abaxial side is upwards) with numerous nectariferous stomata (arrowheads). Asterisk = place where carpel was attached. Scale bar: 100 μm .



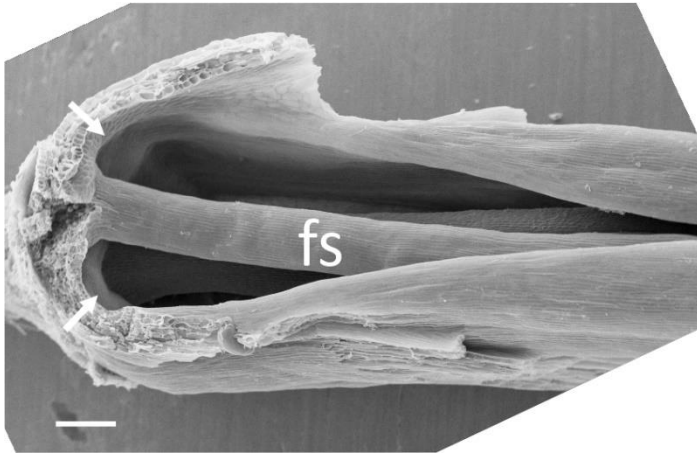
Onobrychis viciifolia, receptacle and hypanthium (view from inside to the abaxial side, receptacle is downwards, abaxial side is upwards) with numerous nectariferous stomata (arrowheads). Asterisk = place where carpel was attached. Scale bar: 100 μm .



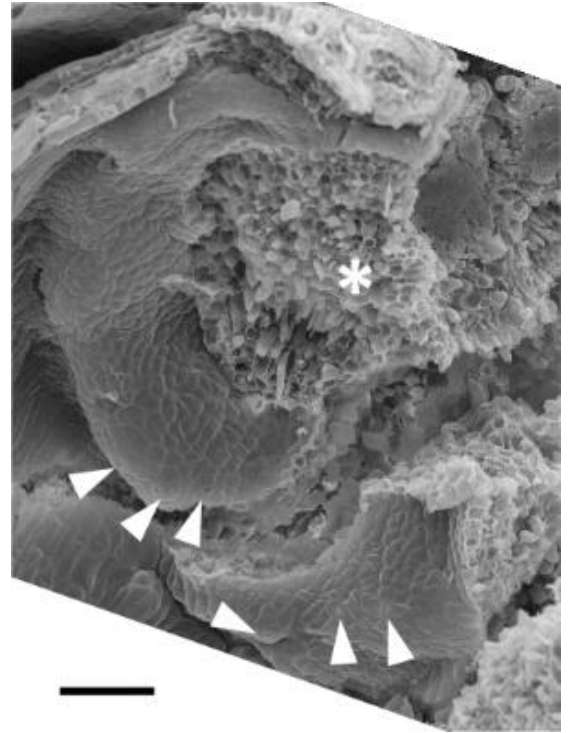
Oxytropis kamtschatica, stamens (view from the adaxial side, receptacle is to the left). Arrows = fenestrae, fs = free stamen. Scale bar: 300 μm .



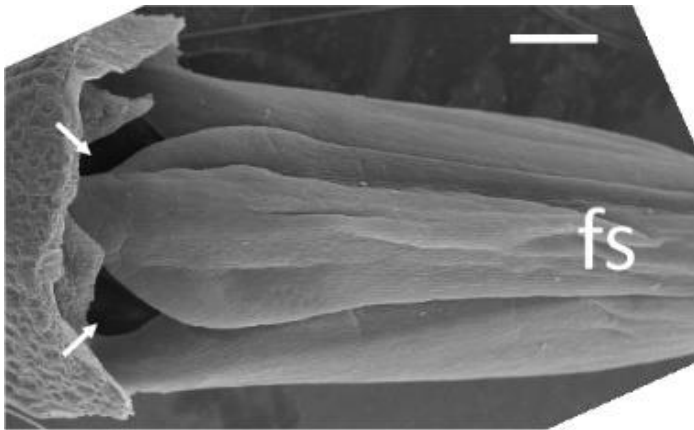
O. kamtschatica, abaxial nectariferous stomata (arrowheads; abaxial side is downwards). Asterisk = place where carpel was attached. Scale bar: 300 μm .



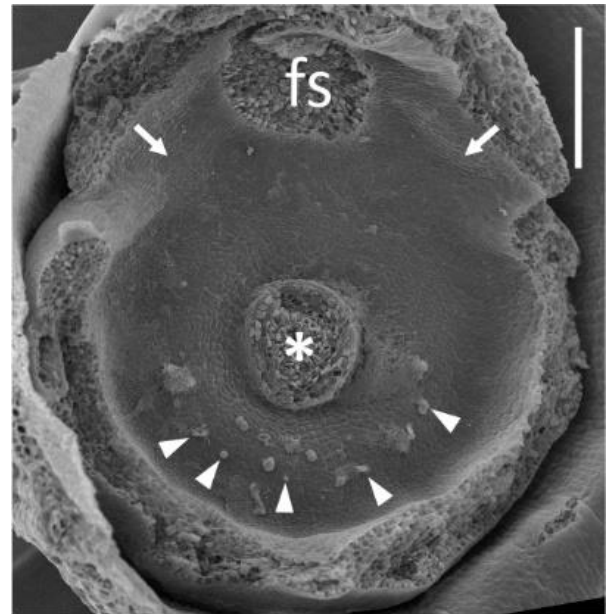
Trifolium lupinaster, stamens (view from the adaxial side, receptacle is to the left). Arrows = fenestrae, fs = free stamen. Scale bar: 300 μ m.



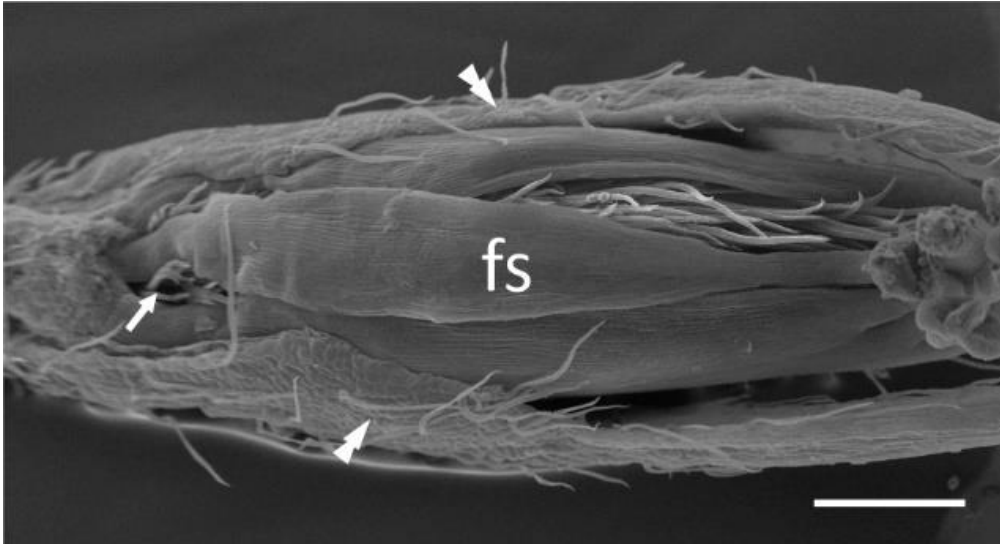
T. medium, nectar disc (partly damaged during dissection) with secretory stomata (arrowheads); abaxial side is downwards. Asterisk = place where carpel was attached. Scale bar: 100 μ m.



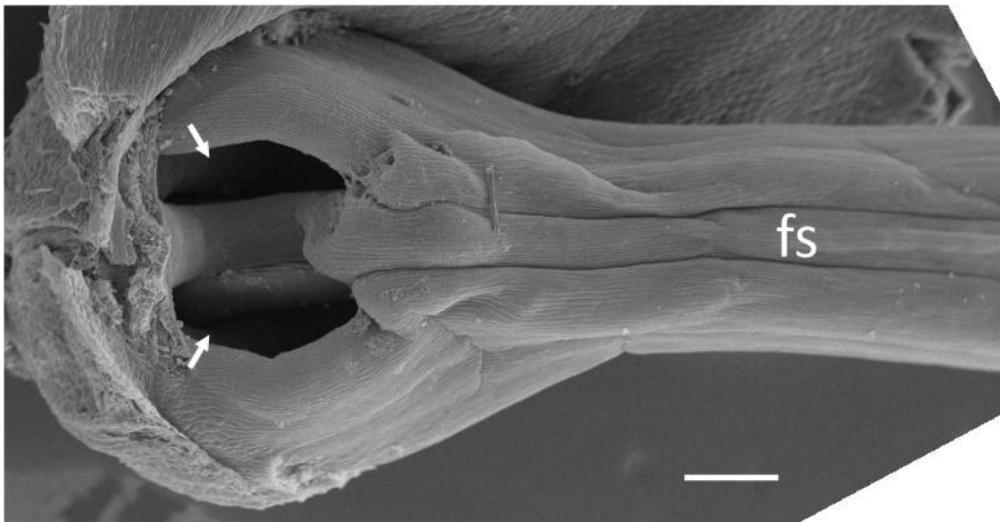
Trigonella foenum-graecum, stamens (view from the adaxial side, receptacle is to the left). Arrows = fenestrae; fs = free stamen. Scale bar: 300 μ m.



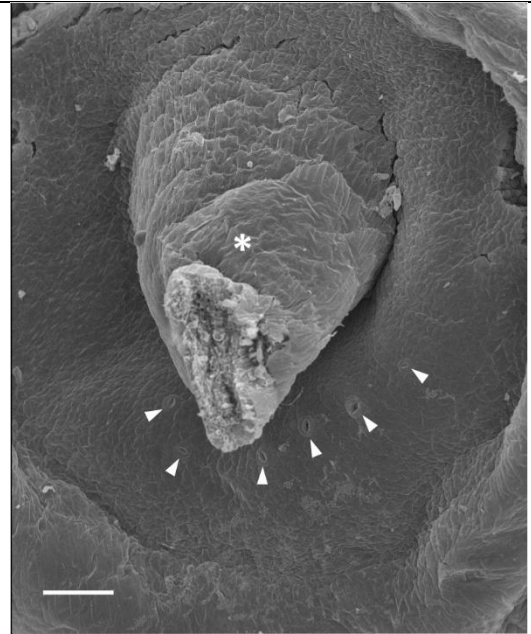
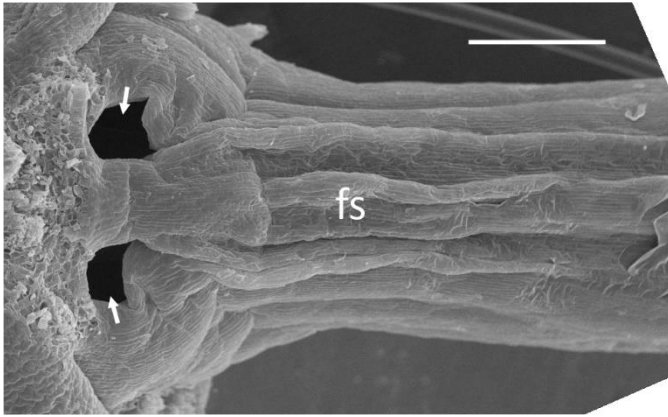
T. foenum-graecum, abaxial nectariferous stomata (arrowheads; all are clotted with a secrete), abaxial side is downwards. Asterisk = place where carpel was attached; fs = former place of free stamen; arrows = fenestrae. Scale bar: 300 μ m.



Vicia hirsuta, stamens (view from the adaxial side, receptacle is to the left). Arrow = fenestra; double arrowhead = calyx; fs = free stamen. Scale bar: 300 μ m.

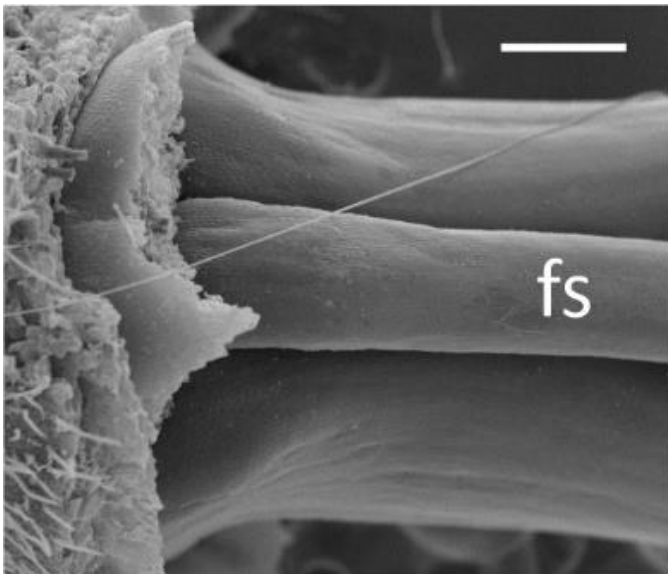


V. sepium, stamens (view from the adaxial side, receptacle is to the left). Arrows = fenestrae; fs = free stamen. Scale bar: 300 μ m.



Vicia sylvatica, stamens (view from the adaxial side, receptacle is to the left). Arrows = fenestrae; fs = free stamen. Scale bar: 300 μ m.

V. sylvatica, abaxial nectariferous stomata (arrowheads), abaxial side is downwards. Asterisk = carpel base. Scale bar: 100 μ m.



Wisteria sinensis, stamens (view from the adaxial side, receptacle is to the left). fs = free stamen. Scale bar: 300 μ m.