

Supplementary Table S1 - Summary of nonlinear regression analyses of the curves shown in **Figure 2**.

Model (Figure 2A)	Polynomial		
Adj. R-Square	--	0,96301	-0,135
		Value	Standard Error
DEET (Control)	Intercept	100	1,42431E-14
DEET (Control)	B1	-7,71546E-16	4,31764E-16
DEET (Control)	B2	3,76904E-18	2,58808E-18
Alcohol 70%	Intercept	100,75997	0,72075
Alcohol 70%	B1	-0,0286	0,02185
Alcohol 70%	B2	-1,70154E-4	1,30965E-4
Propylene glycol and alcohol 70%	Intercept	100,39811	0,54404
Propylene glycol and alcohol 70%	B1	-0,01955	0,01649
Propylene glycol and alcohol 70%	B2	1,14646E-4	9,88564E-5
Gel	Intercept	99,89907	1,15496
Gel	B1	0,00218	0,03501
Gel	B2	-2,73686E-4	2,09865E-4
Cream	Intercept	102,04376	3,16329
Cream	B1	-0,20373	0,09589
Cream	B2	-1,0315E-4	5,74793E-4
Model (Figure 2B)	Polynomial		
Adj. R-Square	--	0,91289	0,94179
		Value	Standard Error
DEET	Intercept	100	1,42431E-14
DEET	B1	-7,71546E-16	4,31764E-16
DEET	B2	3,76904E-18	2,58808E-18
Propyleneglycol and Alcohol 70%	Intercept	101,36842	2,45177
Propyleneglycol and Alcohol 70%	B1	-0,0329	0,07432
Propyleneglycol and Alcohol 70%	B2	-5,47212E-4	4,45506E-4
Gel	Intercept	100,22064	1,30296
Gel	B1	0,00991	0,0395
Gel	B2	-5,43613E-4	2,36759E-4
Cream	Intercept	100,79593	1,75284
Cream	B1	-0,00747	0,05314
Cream	B2	-6,05363E-4	3,18504E-4
Gel *	Intercept	97,66122	4,16982
Gel *	B1	0,01373	0,1264
Gel *	B2	-0,00113	7,57688E-4
Model (figure 2C)	Polynomial		
Adj. R-Square	--	0,91936	-0,135
		Value	Standard Error

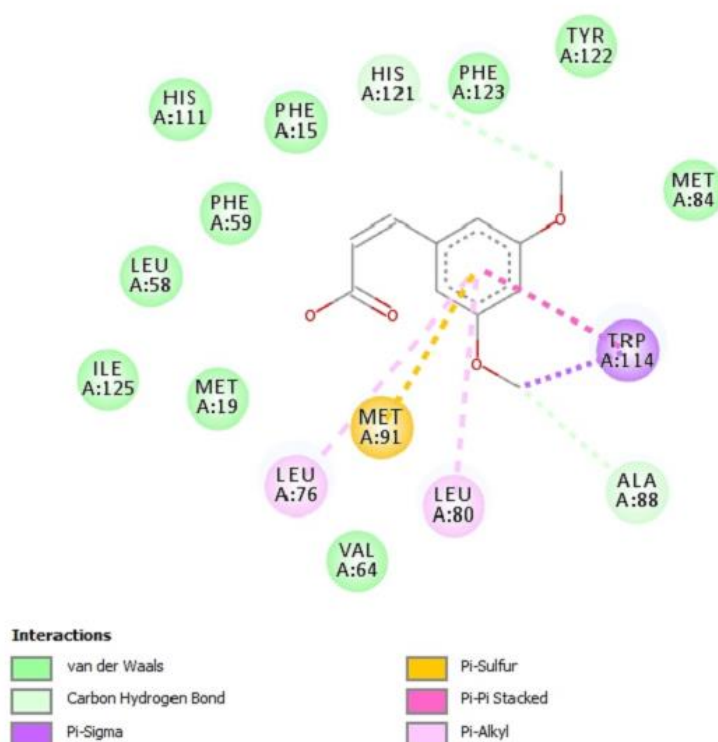
DEET (Control)	Intercept	0	0
DEET (Control)	B1	0	0
DEET (Control)	B2	0	0
Alcohol 70%	Intercept	-0,24169	0,19281
Alcohol 70%	B1	0,01103	0,00584
Alcohol 70%	B2	-5,60492E-6	3,50359E-5
Propylene glycol and alcohol 70%	Intercept	-0,07962	0,10881
Propylene glycol and alcohol 70%	B1	0,00391	0,0033
Propylene glycol and alcohol 70%	B2	-2,29292E-5	1,97713E-5
Gel	Intercept	-0,1	0,22838
Gel	B1	0,00667	0,00692
Gel	B2	1,26172E-20	4,14976E-5
Cream	Intercept	-0,86071	0,57887
Cream	B1	0,07938	0,01755
Cream	B2	-2,80501E-4	1,05184E-4
Model (Figure 2D)	Polynomial		
Adj. R-Square	--	0,9074	0,89754
		Value	Standard Error
DEET (Control)	Intercept	0	0
DEET (Control)	B1	0	0
DEET (Control)	B2	0	0
Propyleneglycol and Alcohol 70%	Intercept	-1,1513	1,86546
Propyleneglycol and Alcohol 70%	B1	0,03125	0,05655
Propyleneglycol and Alcohol 70%	B2	3,61517E-4	3,38968E-4
Gel	Intercept	1,60475	2,78932
Gel	B1	1,34422E-4	0,08456
Gel	B2	7,72428E-4	5,06841E-4
Cream	Intercept	-0,71947	1,39449
Cream	B1	0,01195	0,04227
Cream	B2	4,05401E-4	2,53389E-4
Gel*	Intercept	1,60475	2,78932
Gel*	B1	1,34422E-4	0,08456
Gel*	B2	7,72428E-4	5,06841E-4

Supplementary Table S2. Analysis of variance with repeated measures over time for total number of *A. aegypti* larvae preyed (with and without recovery) by *B. anurum* after exposure to extract of *C. alba*.

Sources of variation	<i>df</i>	<i>F</i>	<i>P</i>		
Between factors					
Extract (Ex)	1	3.43	0.07		
Error	28	-	-		
	<i>df_{num}</i>	<i>df_{den}</i>	Wilks' lambda	<i>F</i>	<i>P</i>
Within each factor					
Recovery time (RT)	1	28	0.247	85.57	<0.0001*
RT × Ex	1	28	0.960	1.17	0.288

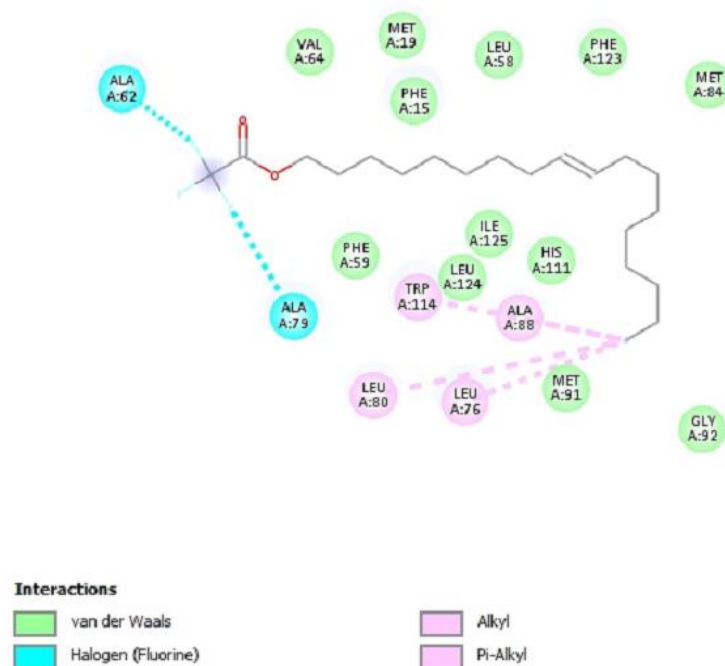
,

2D maps interactions with 3,5-dimethoxycinnamic acid



Supplementary Figure S1. 3,5-dimethoxycinnamic acid binds to *Aedes aegypti* odorant binding protein (AeagOBP1). The 2D maps demonstrating molecular interactions with amino acids from AeagOBP1 active site and 3,5-dimethoxycinnamic acid.

2D maps interactions with oleoyl alcohol trifluoroacetate



Supplementary Figure S2. Oleoyl alcohol trifluoroacetate binds to *Aedes aegypti* odorant binding protein (AeagOBP1). The 2D maps demonstrating molecular interactions with amino acids from AeagOBP1 active site and oleoyl alcohol trifluoroacetate.