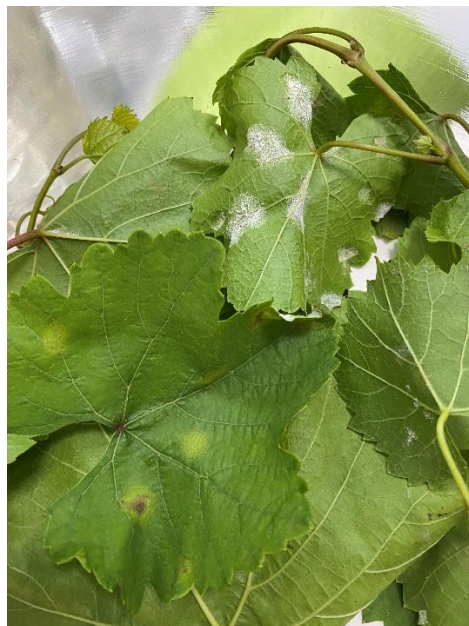


(a)



(b)

Supplementary Materials, Figure S3. The source of fungal conidia to prepare inoculum for the experimental infection of the 'Dixie' S1 seedlings: **(a)** The grape bunches affected by odium were collected in Livadia (the southern coast of Crimea); **(b)** leaves, infected by downy mildew collected in the Balaklava region of Crimea.