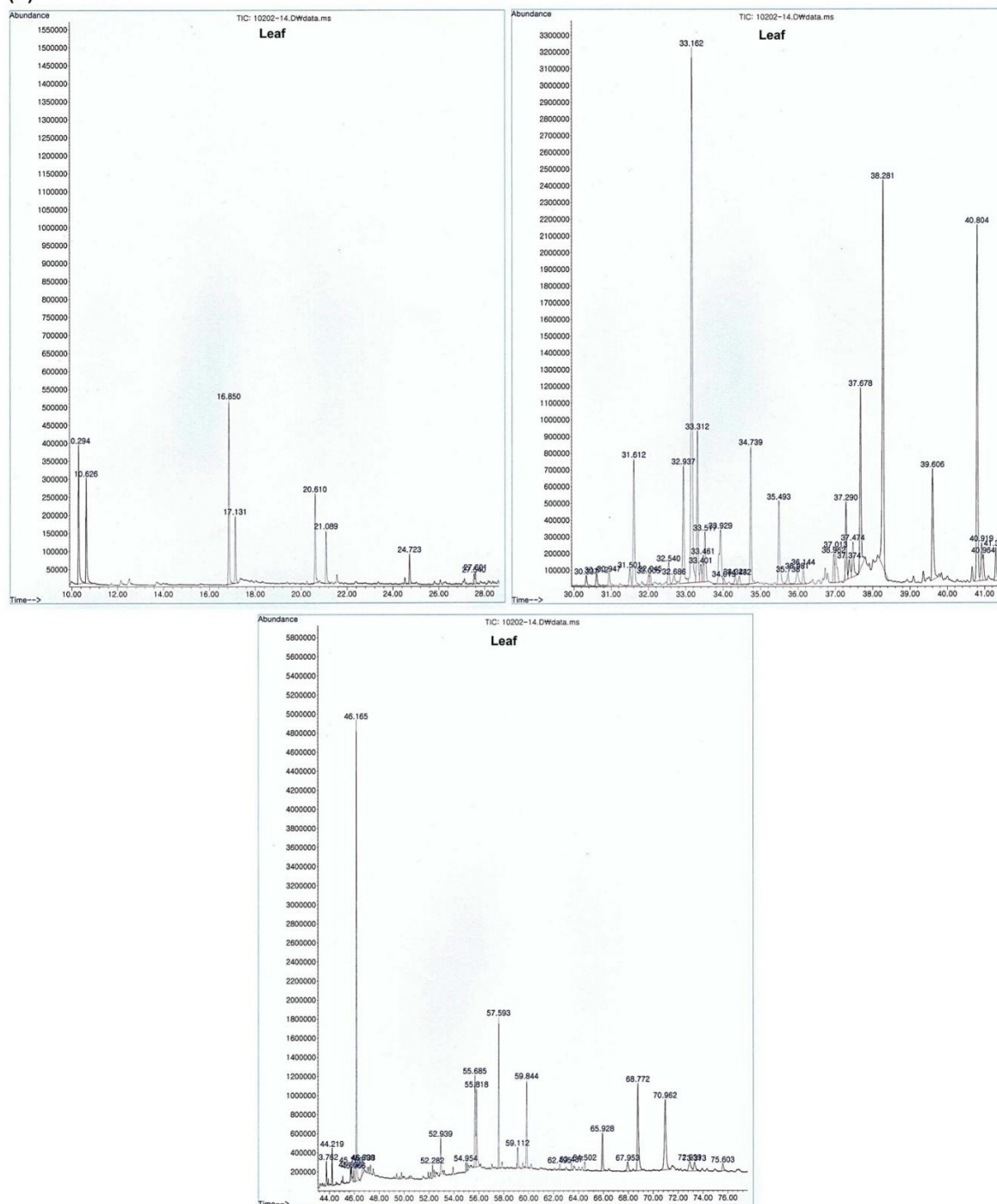


Phytochemical Composition and Antioxidant and Anti-Inflammatory Activities of *Ligularia fischeri* Turcz: A comparison between Leaf and Root Extracts

(A)



(B)

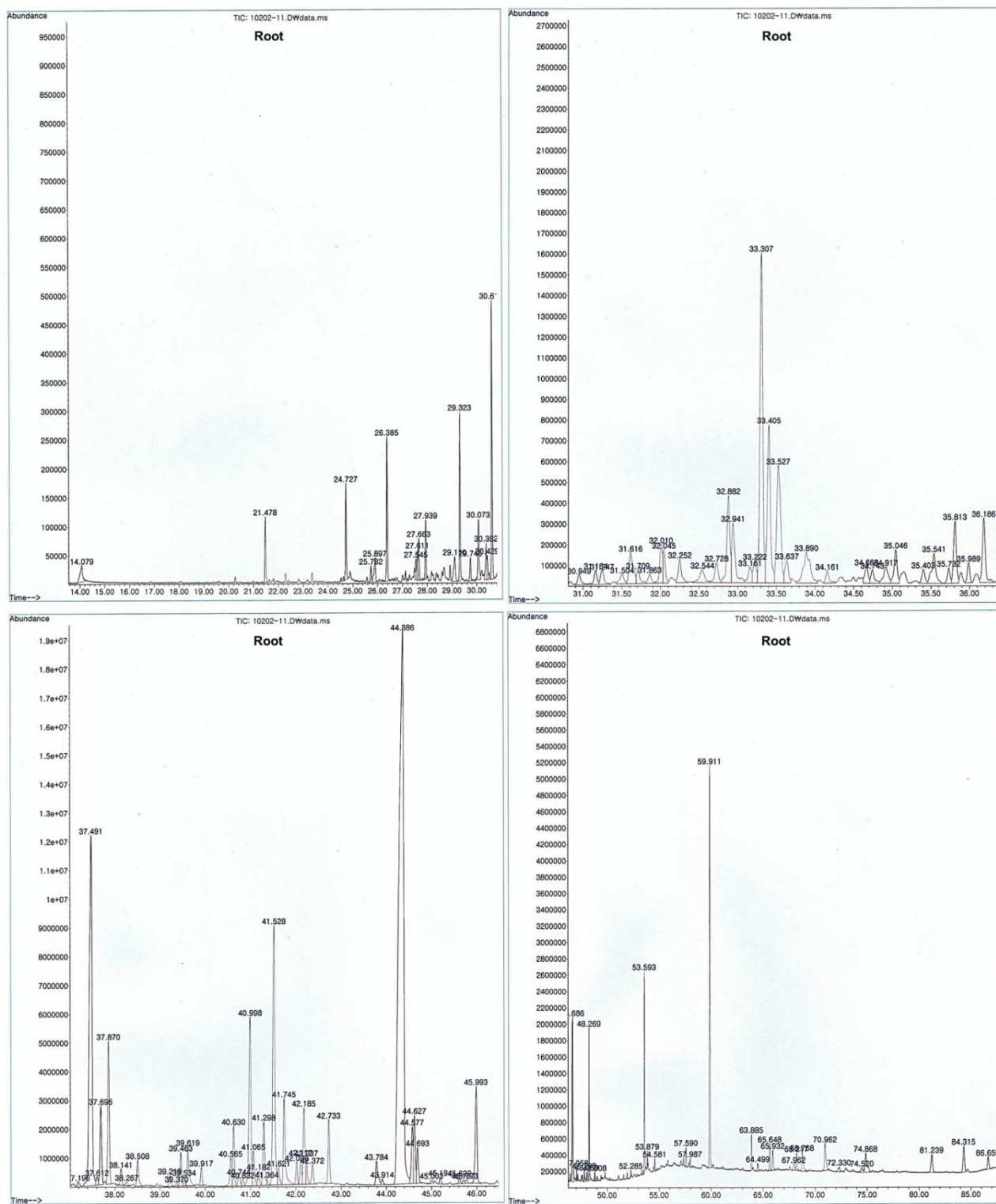


Figure S1. GC chromatograms of (A) leaf and (B) root extracts from *L. fischeri*.

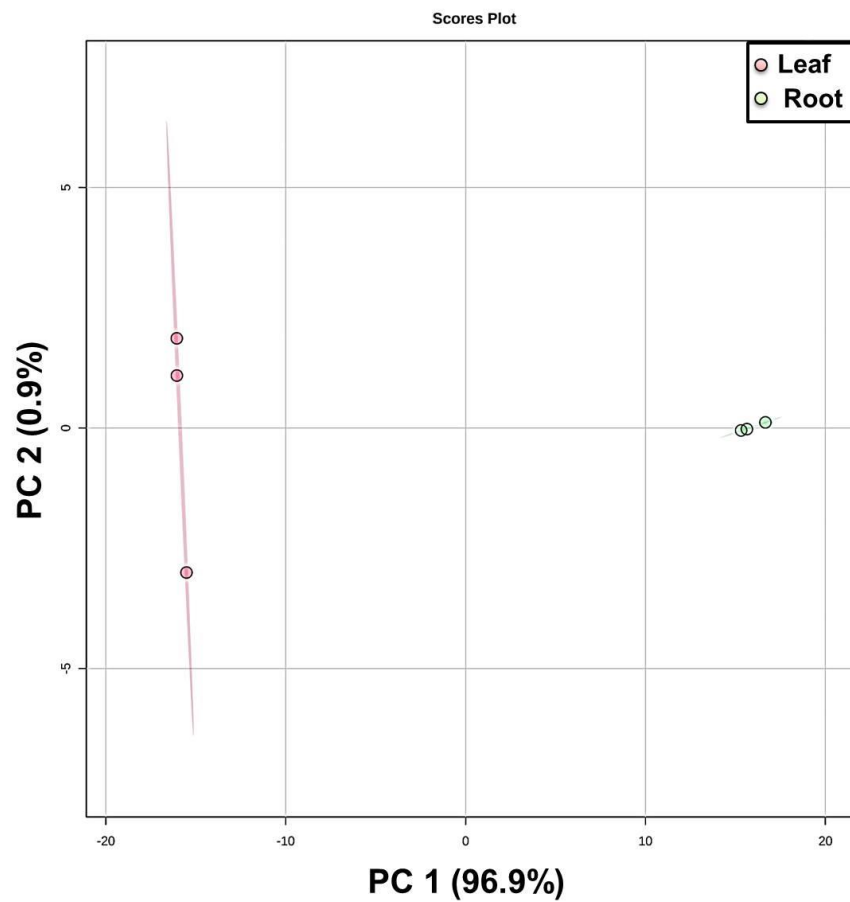


Figure S2. Principal component analysis (PCA) score plot of the non-polar compounds in roots and leaves of *L. fischeri*. Red dots represent non-polar compounds in leaves. Green dots represent non-polar compounds in roots.