

Figure S1. Base peak chromatogram (BPC) of Q-TOF LC/MS/MS analysis of *B. armeniaca* methanolic extract (BME) in positive mode.

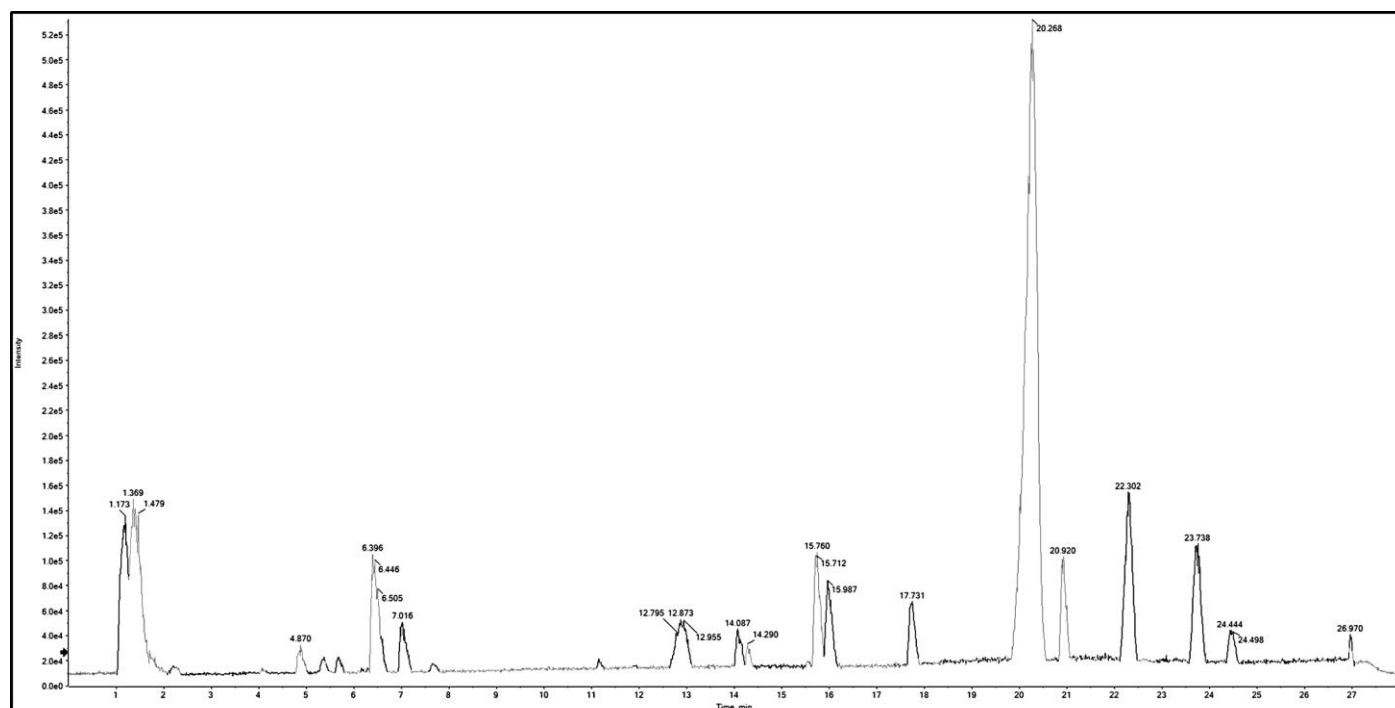


Figure S2. Base peak chromatogram (BPC) of Q-TOF LC/MS/MS analysis of *B. armeniaca* methanolic extract (BME) in negative mode.

Spectrum from 201101-IDA-POS-SM0090-2.wiff (sample 1) - 201...0090-2, Experiment 9, +TOF MS² (50 - 1000)
Precursor: 156.1 Da, CE: 35.0

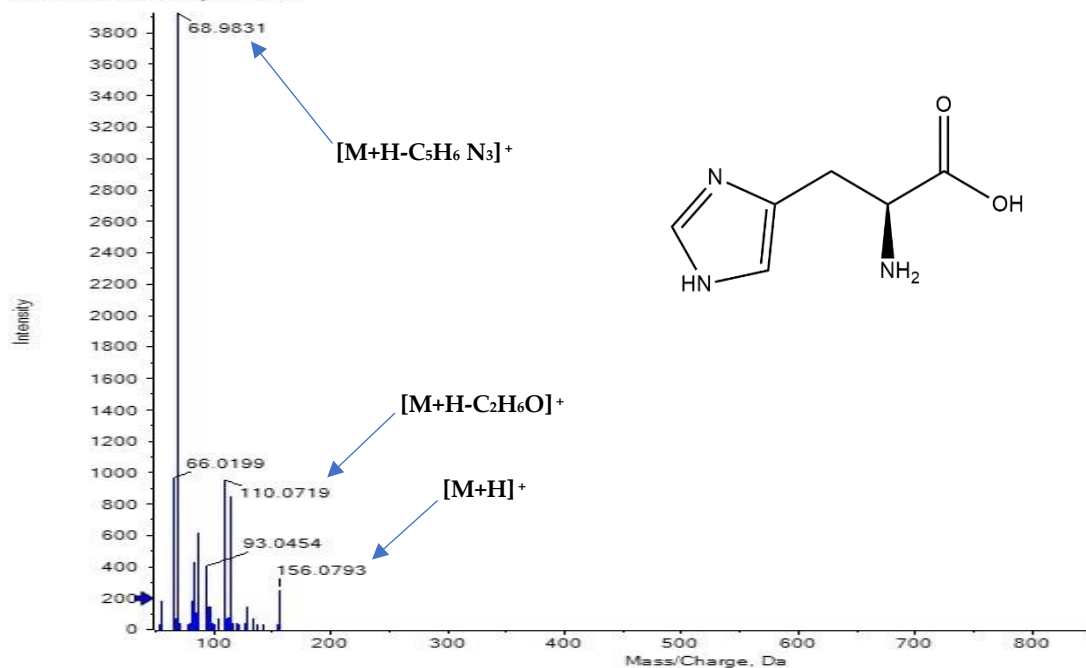


Figure S3. MS/MS spectrum of peak 2: L-Histidine.

Spectrum from 201101-IDA-POS-SM0090-2.wiff (sample 1) - 201...0090-2, Experiment 2, +TOF MS² (50 - 1000)
Precursor: 146.1 Da, CE: 35.0

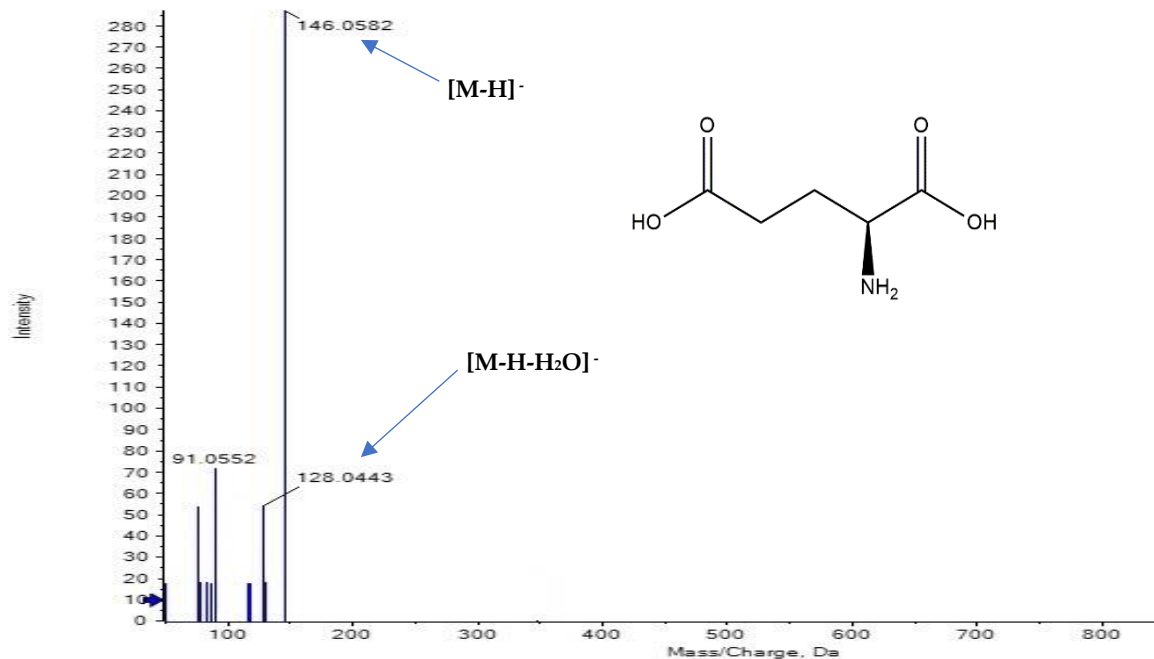


Figure S4. MS/MS spectrum of peak 7: L-Glutamic acid.

Spectrum from 201101-IDA-POS-SM0090-2.wiff (sample 1) - 201...090-2, Experiment 2, +TOF MS² (50 - 1000)
Precursor: 179.1 Da, CE: 35.0

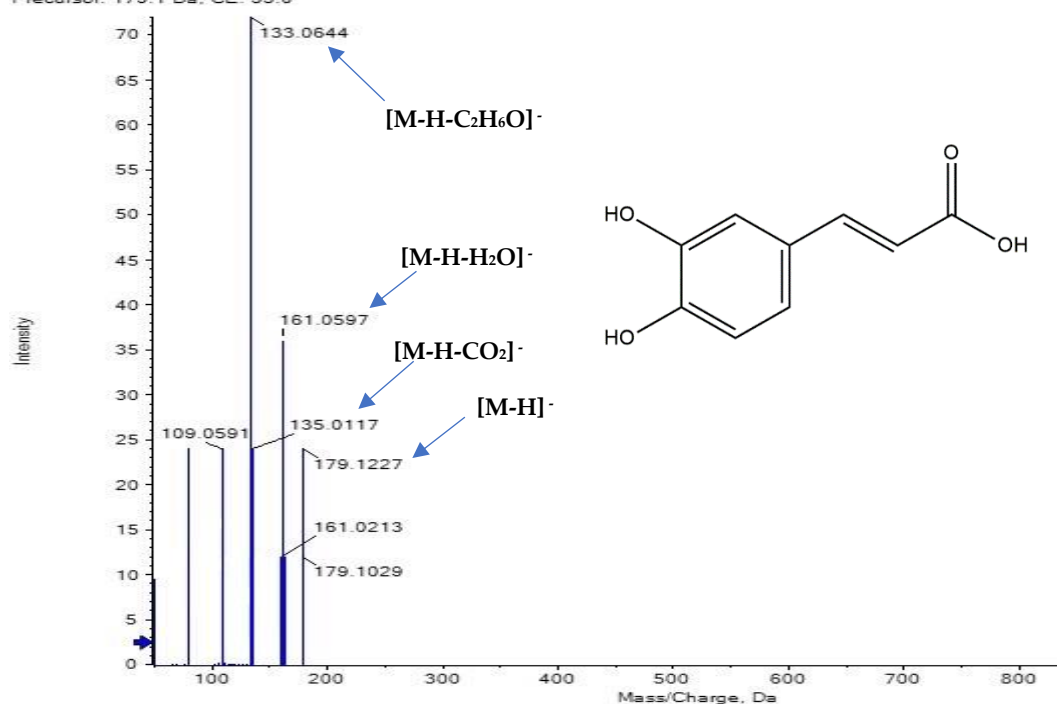


Figure S5. MS/MS spectrum of peak 12: Caffeic acid.

Spectrum from 201028-IDA-NEG-SM0090-2.wiff (sample 1) - 201...0090-2, Experiment 2, -TOF MS² (50 - 1000)
Precursor: 153.0 Da

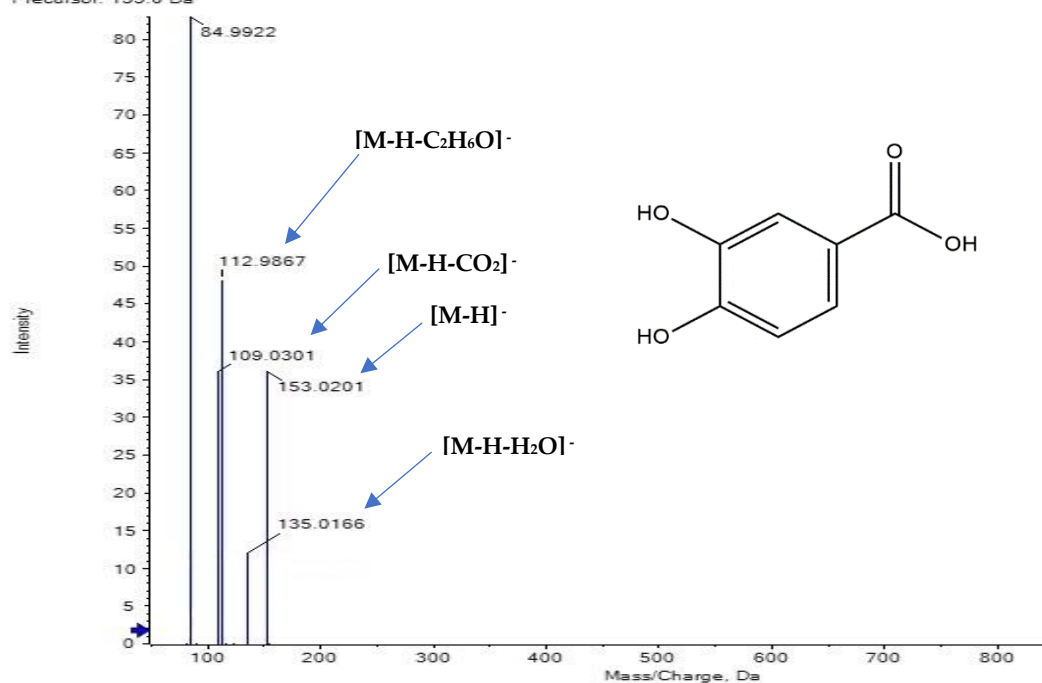


Figure S6. MS/MS spectrum of peak 16: Protocatechuic acid.

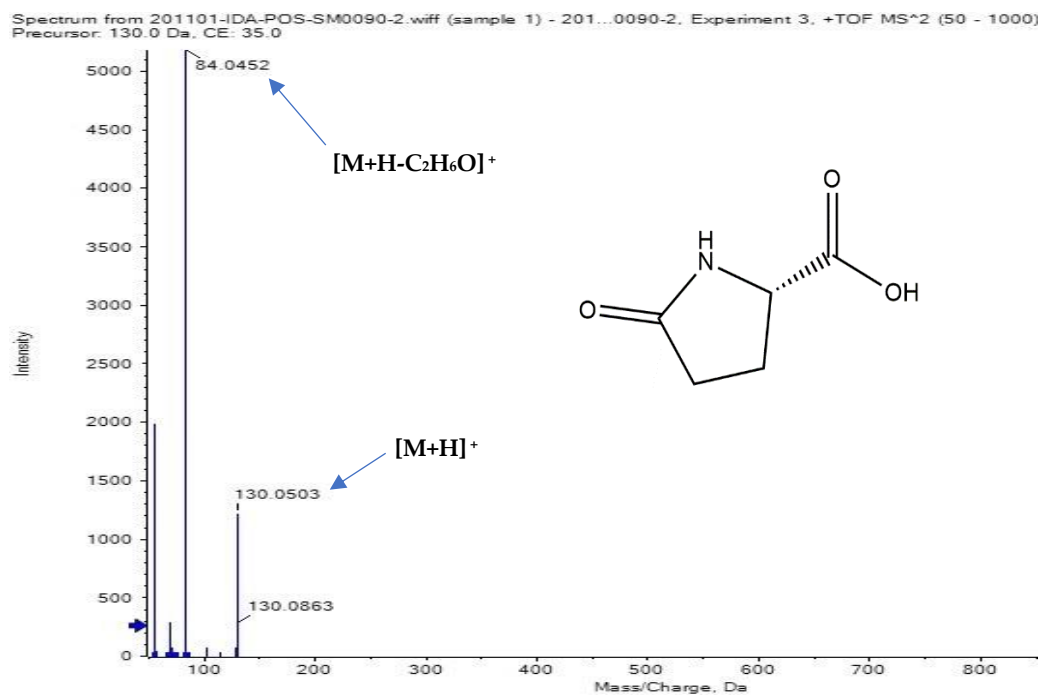


Figure S7. MS/MS spectrum of peak 20: L-Pyroglutamic acid.

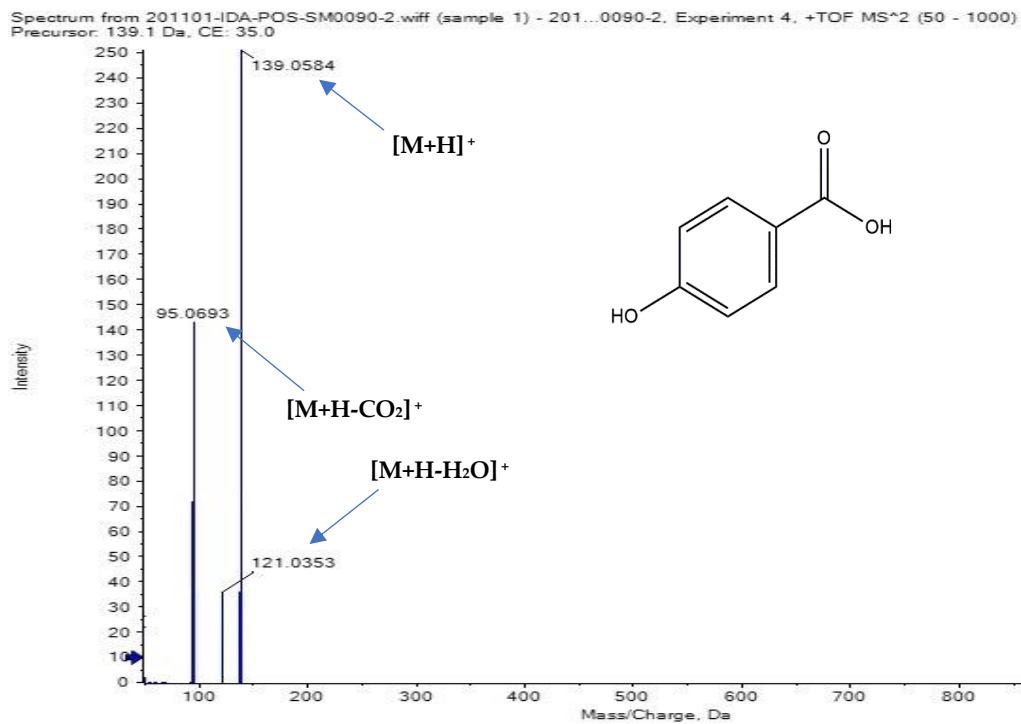


Figure S8. MS/MS spectrum of peak 29: 4-Hydroxybenzoic acid.

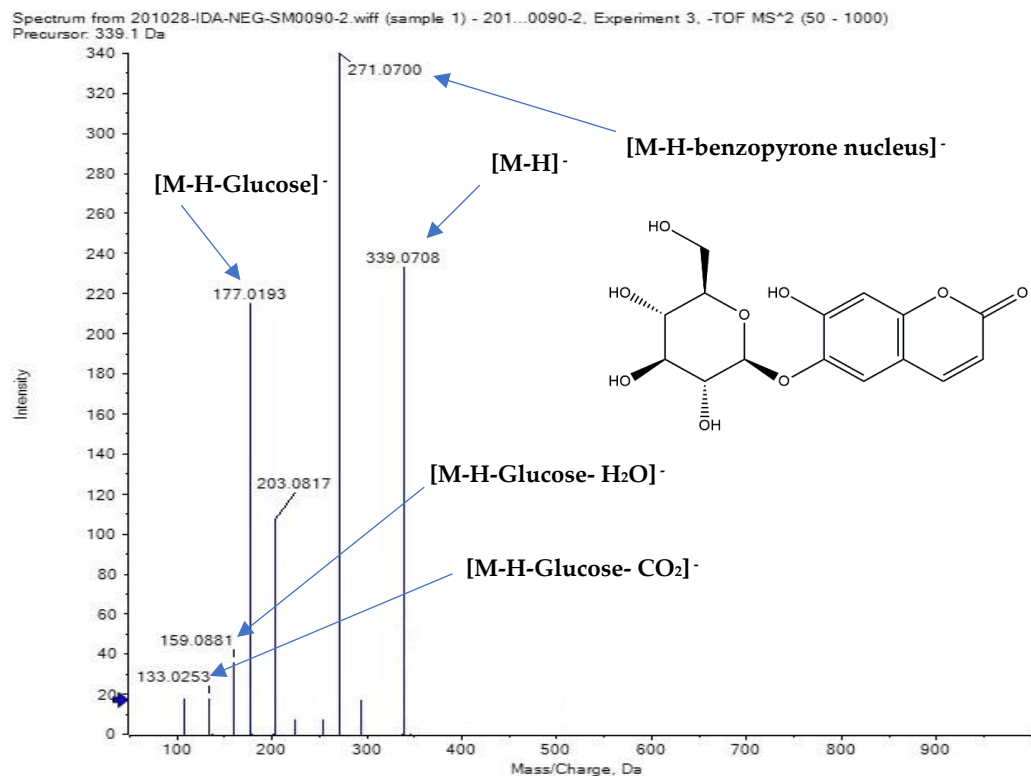


Figure S9. MS/MS spectrum of peak 36: Aesculin.

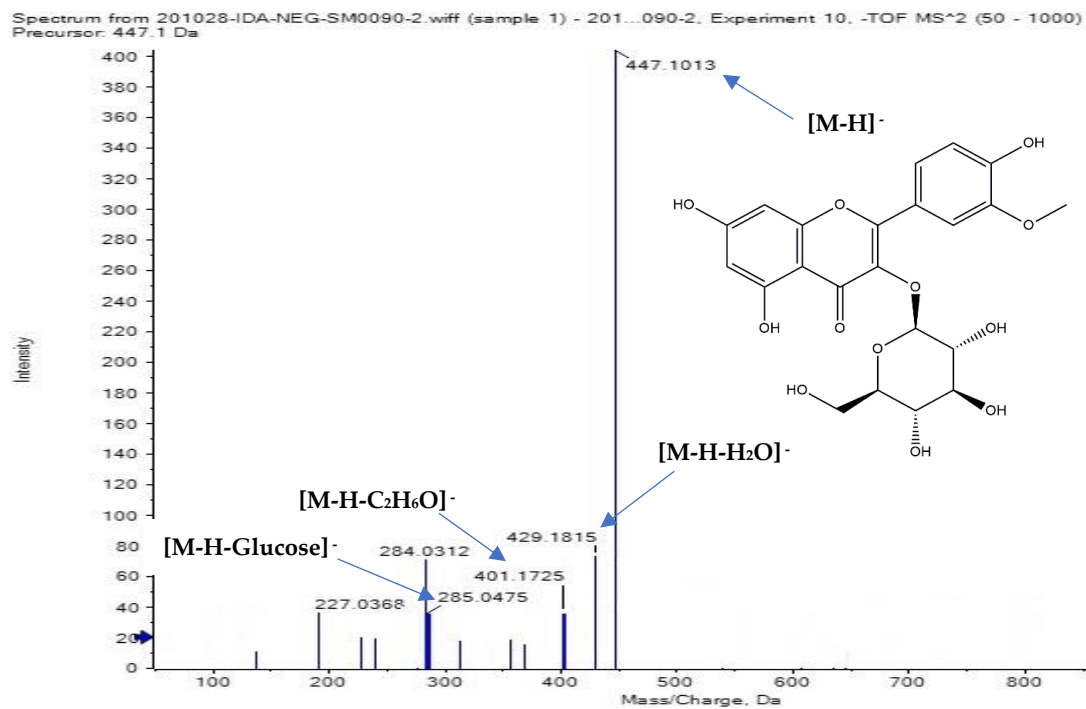


Figure S10. MS/MS spectrum of peak 40: Isorhamnetin-3-O-glucoside.

Spectrum from 201028-IDA-NEG-SM0090-2.wiff (sample 1) - 201...0090-2, Experiment 6, -TOF MS² (50 - 1000)
Precursor: 445.1 Da

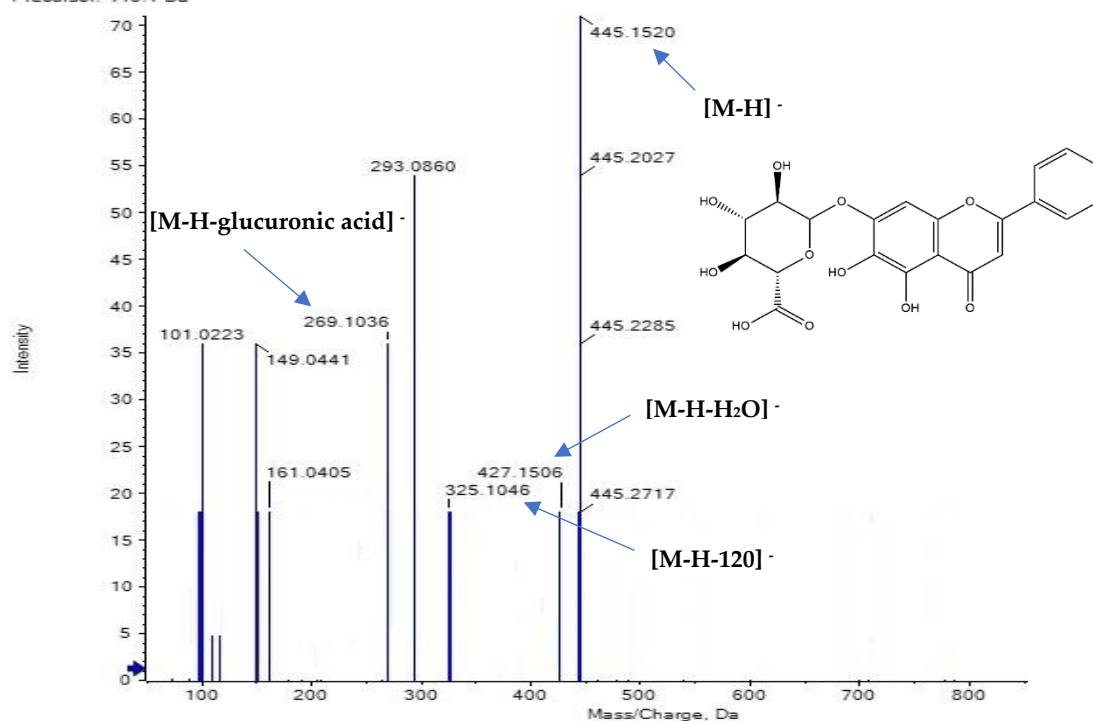


Figure S11. MS/MS spectrum of peak 44: Baicalein-7-O-glucuronide.

Spectrum from 201101-IDA-POS-SM0090-2.wiff (sample 1) - 201...090-2, Experiment 15, +TOF MS² (50 - 1000)
Precursor: 741.2 Da, CE: 35.0

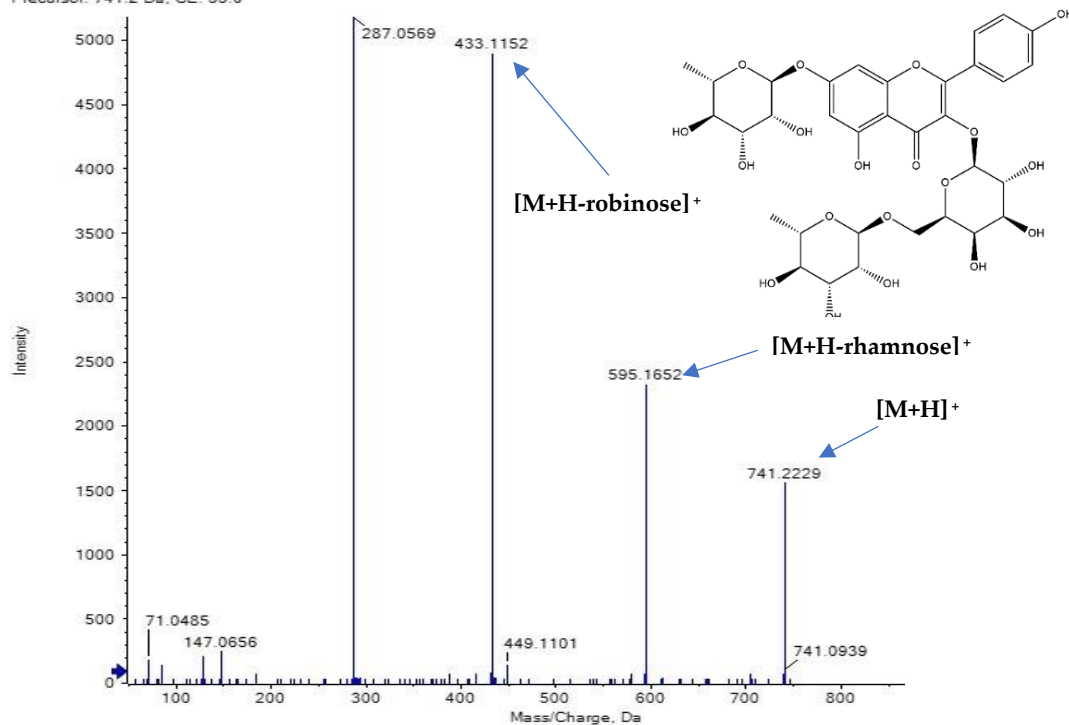


Figure S12. MS/MS spectrum of peak 47: Kaempferol-3-O-robinoside-7-O-rhamnoside.

Spectrum from 201101-IDA-POS-SM0090-2.wiff (sample 1) - 201...090-2, Experiment 10, +TOF MS² (50 - 1000)
Precursor: 595.2 Da, CE: 35.0

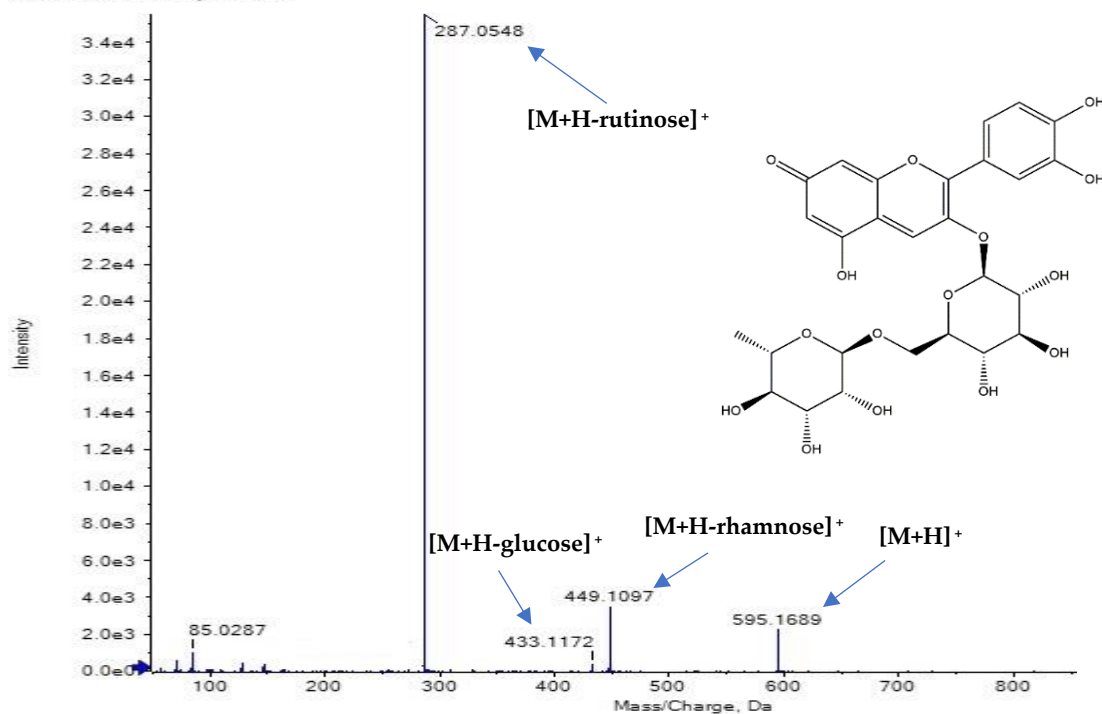


Figure S13. MS/MS spectrum of peak 48: Cyanidin-3-O-rutinoside.

Spectrum from 201028-IDA-NEG-SM0090-2.wiff (sample 1) - 201...090-2, Experiment 3, -TOF MS² (50 - 1000)
Precursor: 447.3 Da

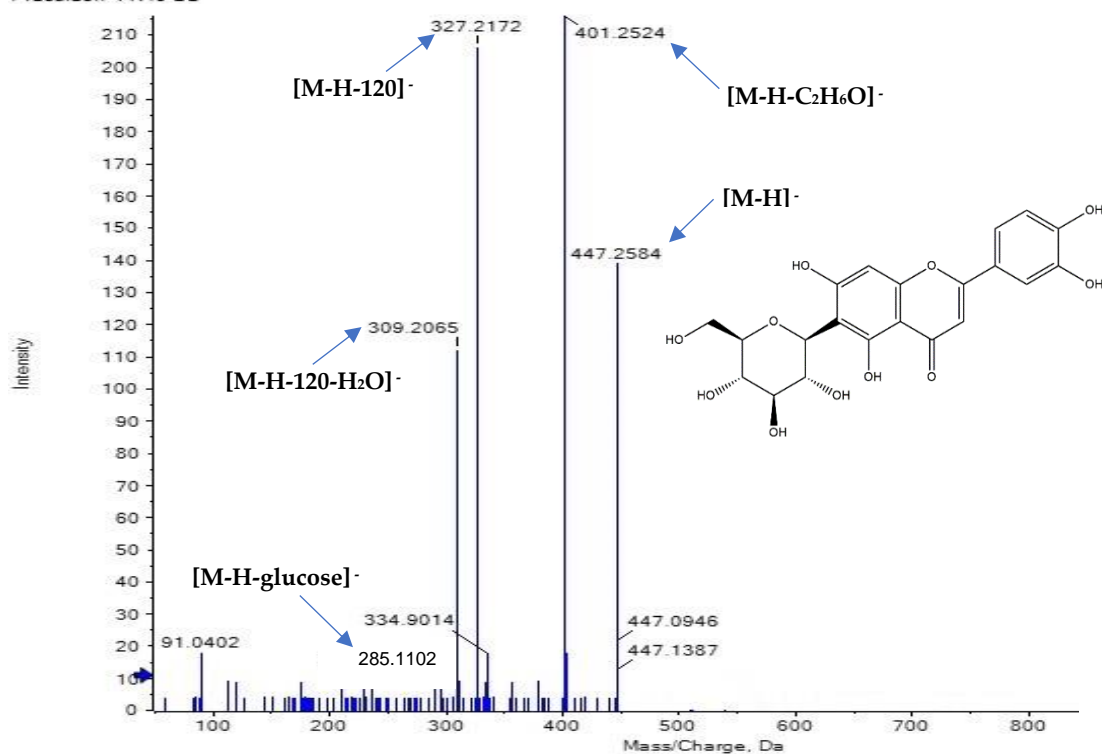


Figure S14. MS/MS spectrum of peak 51: Luteolin-6-C-glucoside.

Spectrum from 201101-IDA-POS-SM0090-2.wiff (sample 1) - 20110...M0090-2, Experiment 7, +TOF MS² (50 - 1000)
Precursor: 609.3 Da, CE: 35.0

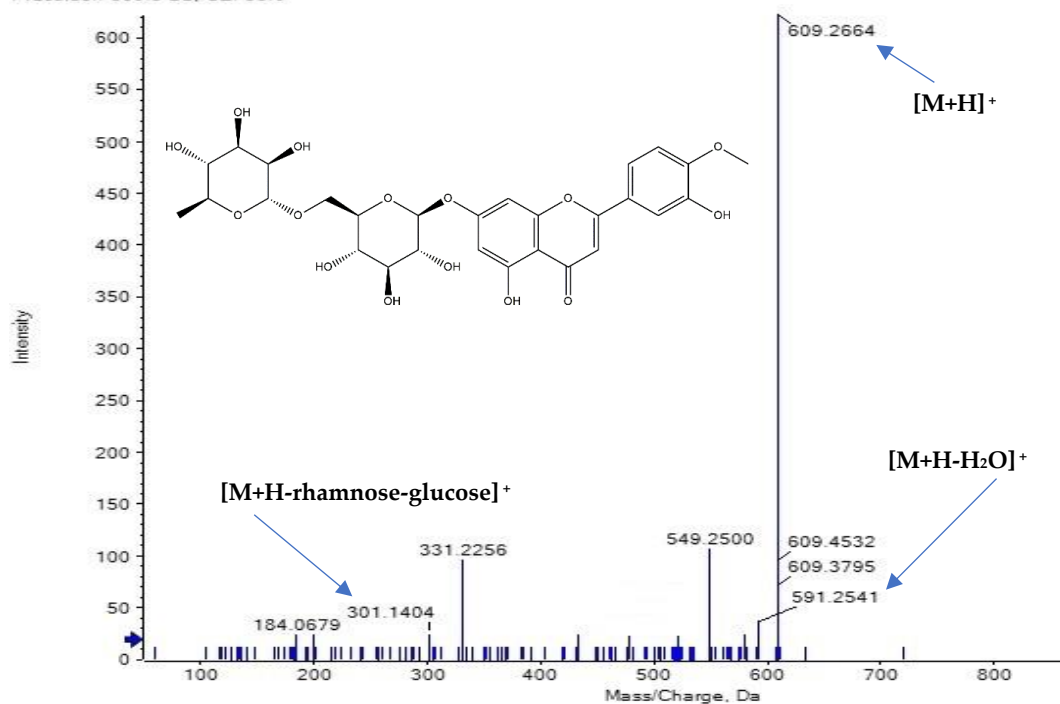


Figure S15. MS/MS spectrum of peak 52: Diosmetin-7-O-rutinoside.

Spectrum from 201101-IDA-POS-SM0090-2.wiff (sample 1) - 2011...0090-2, Experiment 7, +TOF MS² (50 - 1000)
Precursor: 465.2 Da, CE: 35.0

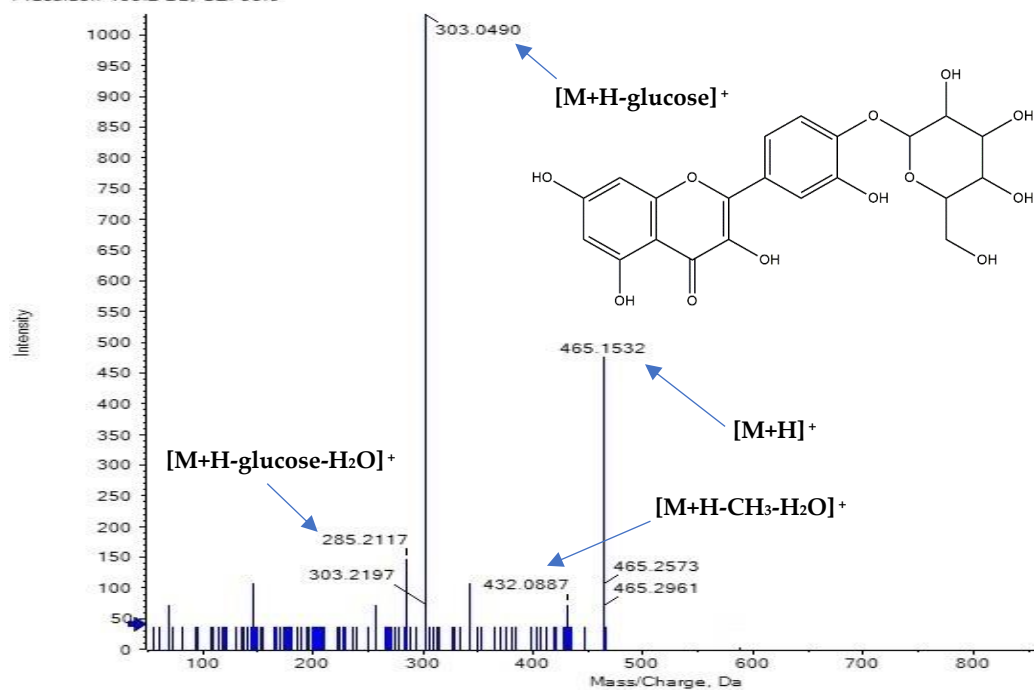


Figure S16. MS/MS spectrum of peak 53: Quercetin-4'-O-glucoside.

Spectrum from 201101-IDA-POS-SM0090-2.wiff (sample 1) - 201...0090-2, Experiment 9, +TOF MS² (50 - 1000)
Precursor: 433.1 Da, CE: 35.0

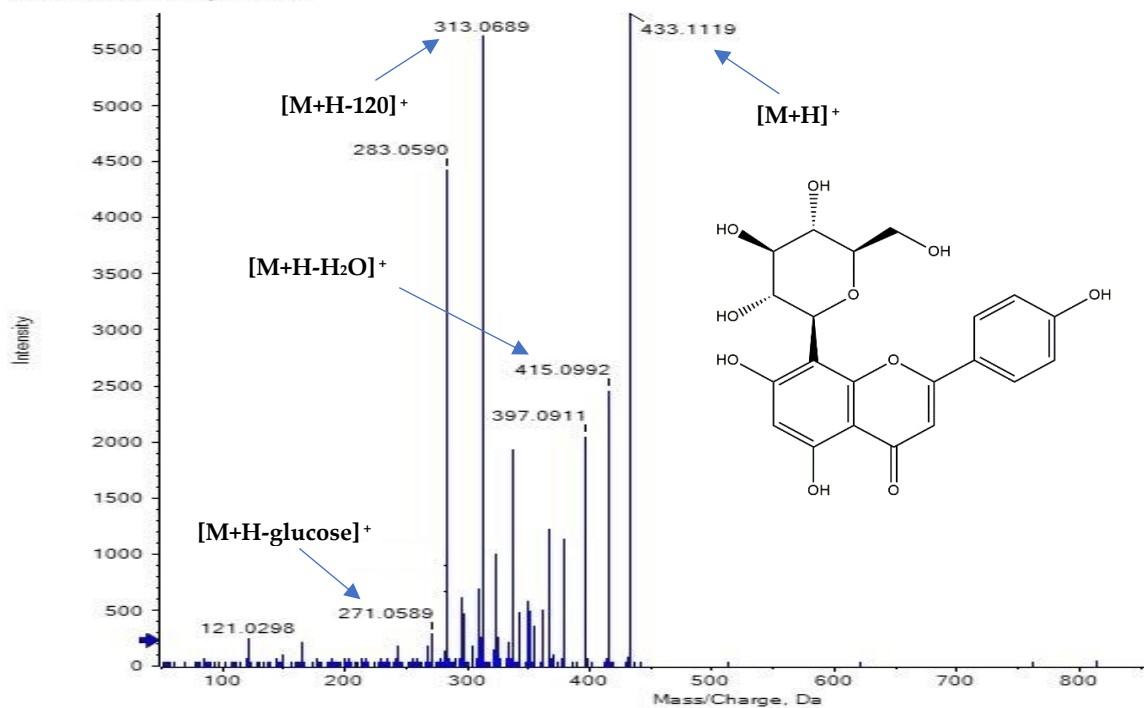


Figure S17. MS/MS spectrum of peak 54: Apigenin 8-C-glucoside.

Spectrum from 201028-IDA-NEG-SM0090-2.wiff (sample 1) - 201...0090-2, Experiment 9, -TOF MS² (50 - 1000)
Precursor: 609.1 Da

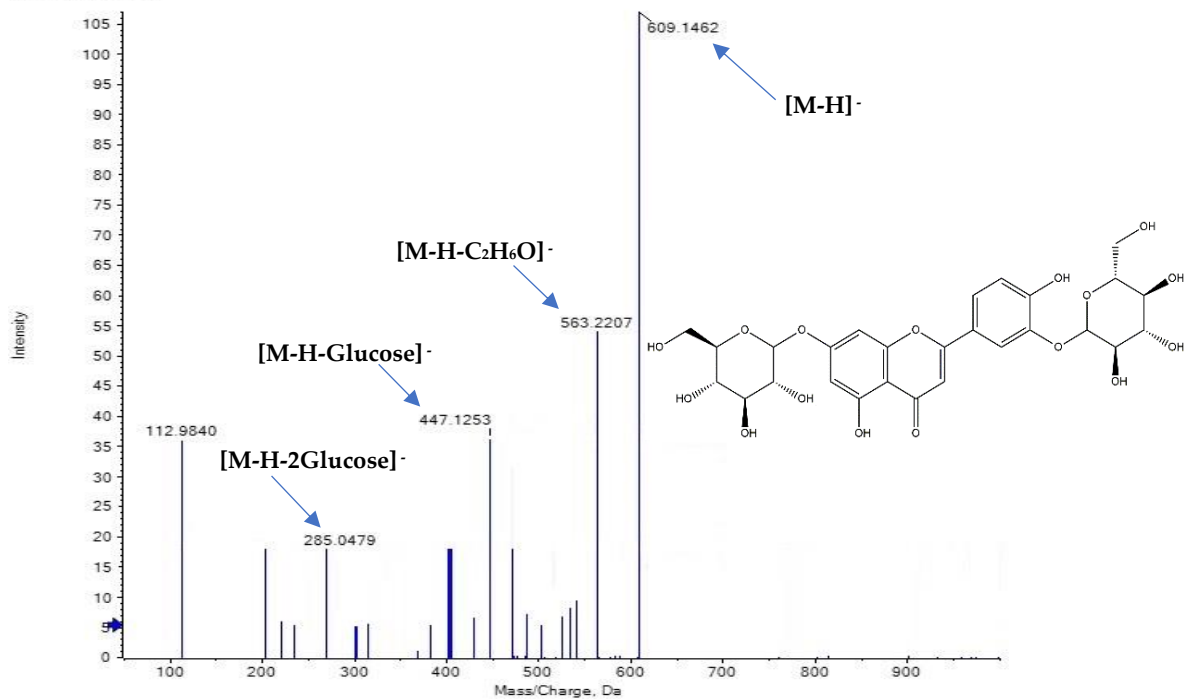


Figure S18. MS/MS spectrum of peak 57: Luteolin-3', 7-di-O-glucoside.

Spectrum from 201101-IDA-POS-SM0090-2.wiff (sample 1) - 201101-IDA-POS-SM0090-2, Experiment 4, +TOF MS² (50 - 1000)
Precursor: 611.2 Da, CE: 35.0

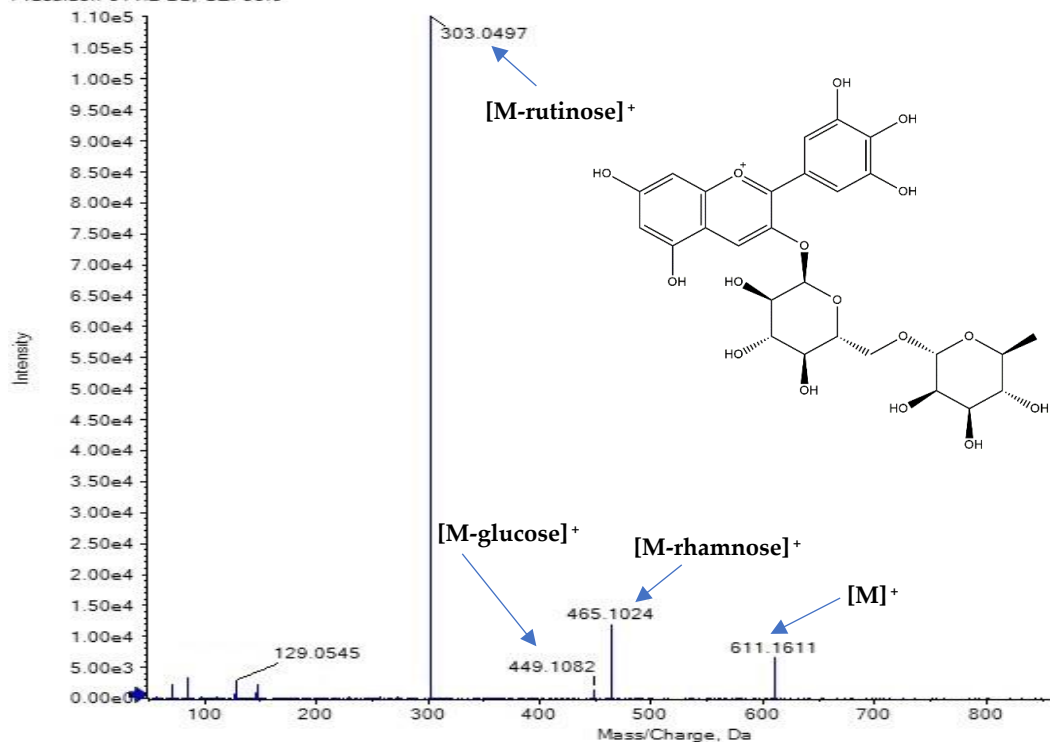


Figure S19. MS/MS spectrum of peak 58: Delphinidin 3-O-rutinoside.

Spectrum from 201101-IDA-POS-SM0090-2.wiff (sample 1) - 201101-IDA-POS-SM0090-2, Experiment 9, +TOF MS² (50 - 1000)
Precursor: 595.2 Da, CE: 35.0

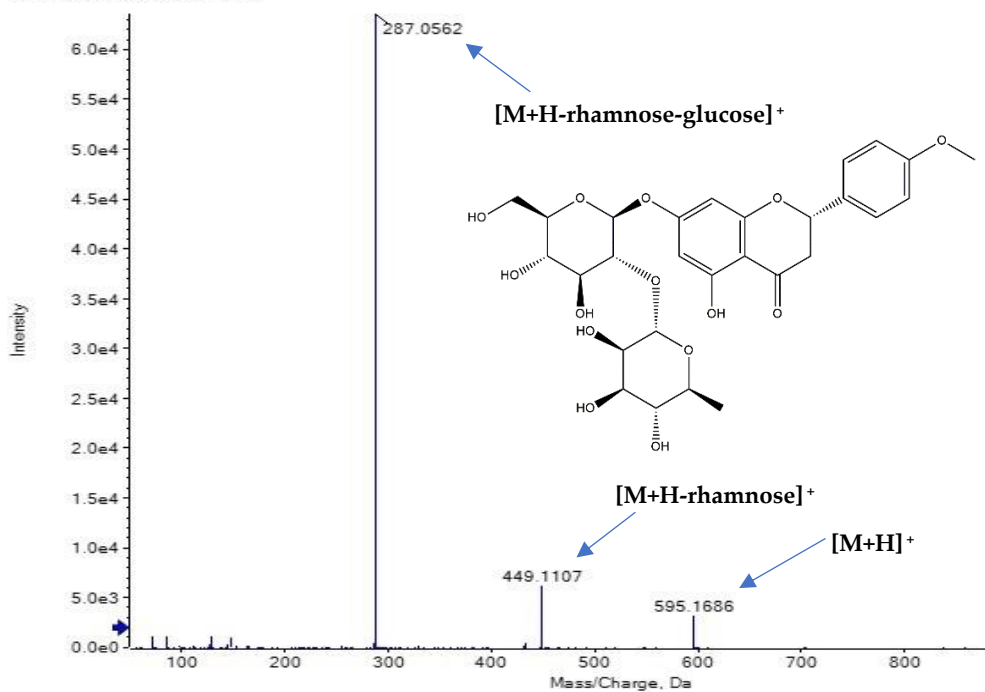


Figure S20. MS/MS spectrum of peak 61: Isosakuranetin-7-O-neohesperidoside.

Spectrum from 201101-IDA-POS-SM0090-2.wiff (sample 1) - 201...090-2, Experiment 10, +TOF MS² (50 - 1000)
Precursor: 449.1 Da, CE: 35.0

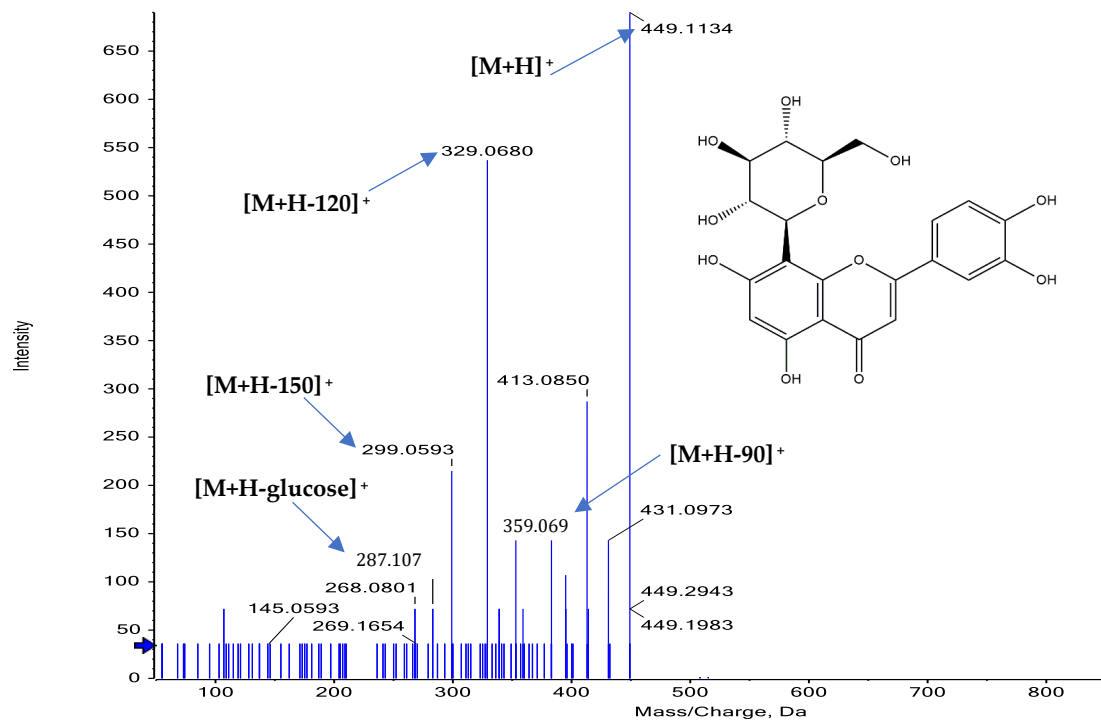


Figure S21. MS/MS spectrum of peak 63: Luteolin-8-C-glucoside.

Spectrum from 201101-IDA-POS-SM0090-2.wiff (sample 1) - 20110...M0090-2, Experiment 12, +TOF MS² (50 - 1000)
Precursor: 625.2 Da, CE: 35.0

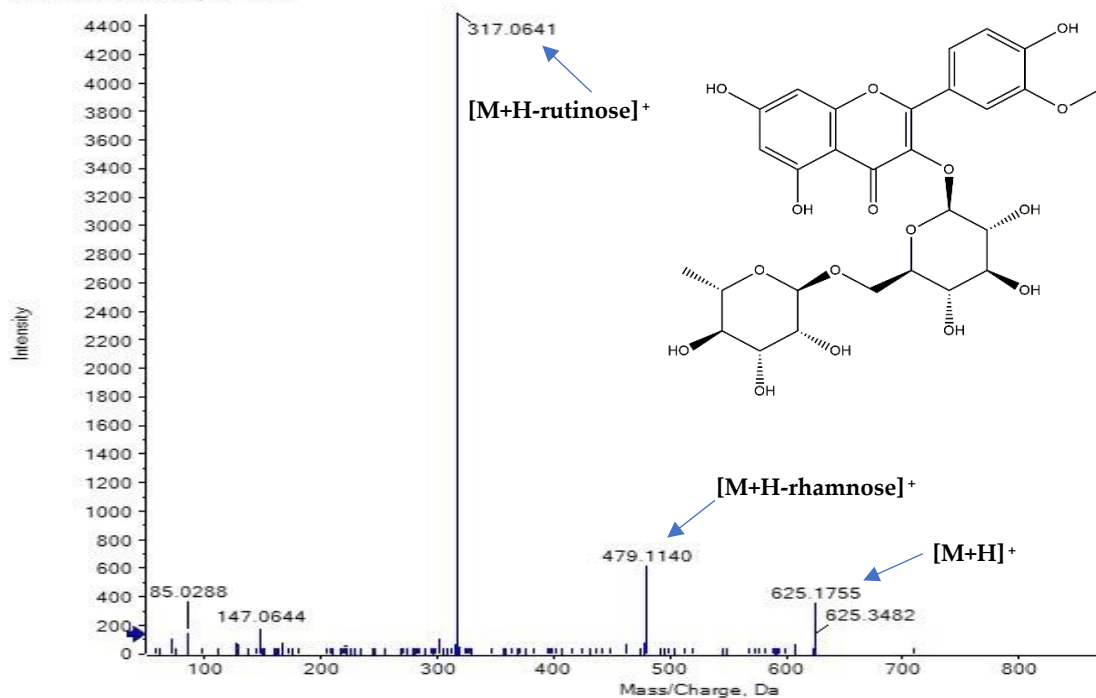


Figure S22. MS/MS spectrum of peak 65: Isorhamnetin-3-O-rutinoside.

Spectrum from 201028-IDA-NEG-SM0090-2.wiff (sample 1) - 201...090-2, Experiment 3, -TOF MS² (50 - 1000)
Precursor: 315.1 Da

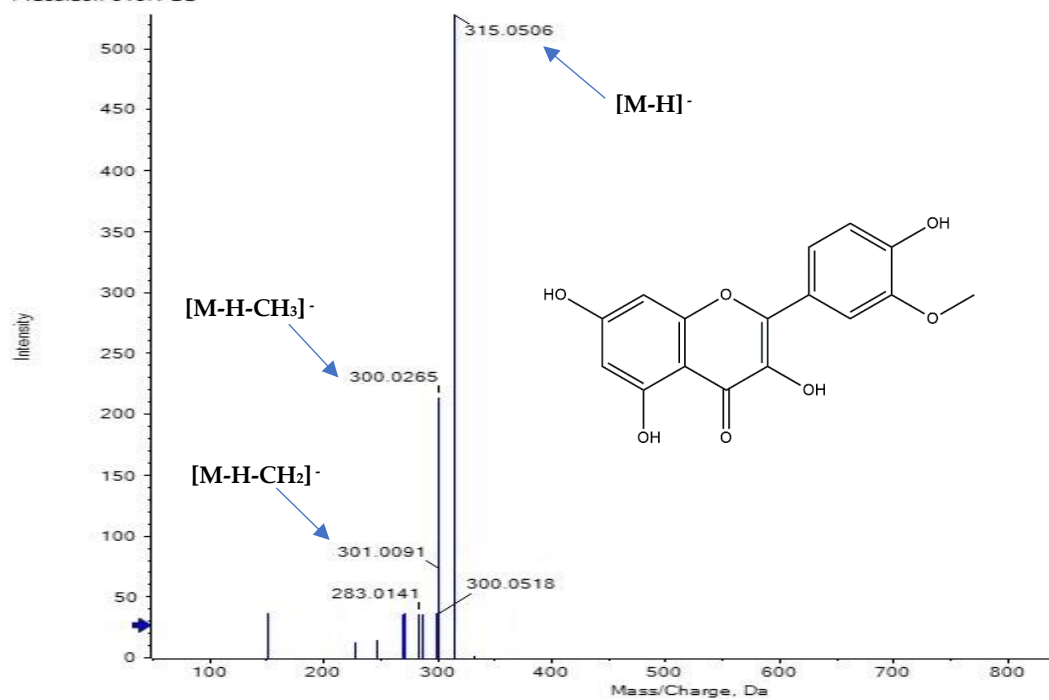


Figure S23. MS/MS spectrum of peak 76: Isorhamnetin.

Spectrum from 201028-IDA-NEG-SM0090-2.wiff (sample 1) - 201...090-2, Experiment 2, -TOF MS² (50 - 1000)
Precursor: 269.1 Da

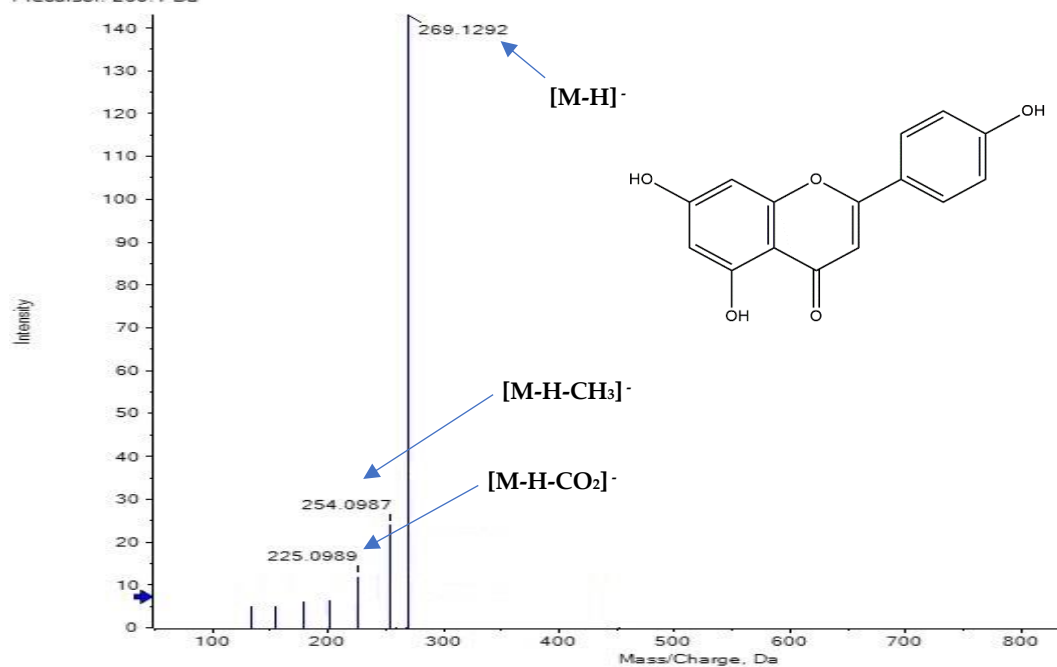


Figure S24. MS/MS spectrum of peak 79: Apigenin.