

Physicochemical characterization and antimicrobial activity against *Erwinia amylovora*, *Erwinia vitivora*, and *Diplodia seriata* of a light purple *Hibiscus syriacus* L. cultivar

E. Sánchez-Hernández, L. Buzón-Durán, B. Lorenzo-Vidal, J. Martín-Gil and P. Martín-Ramos

SUPPORTING INFORMATION

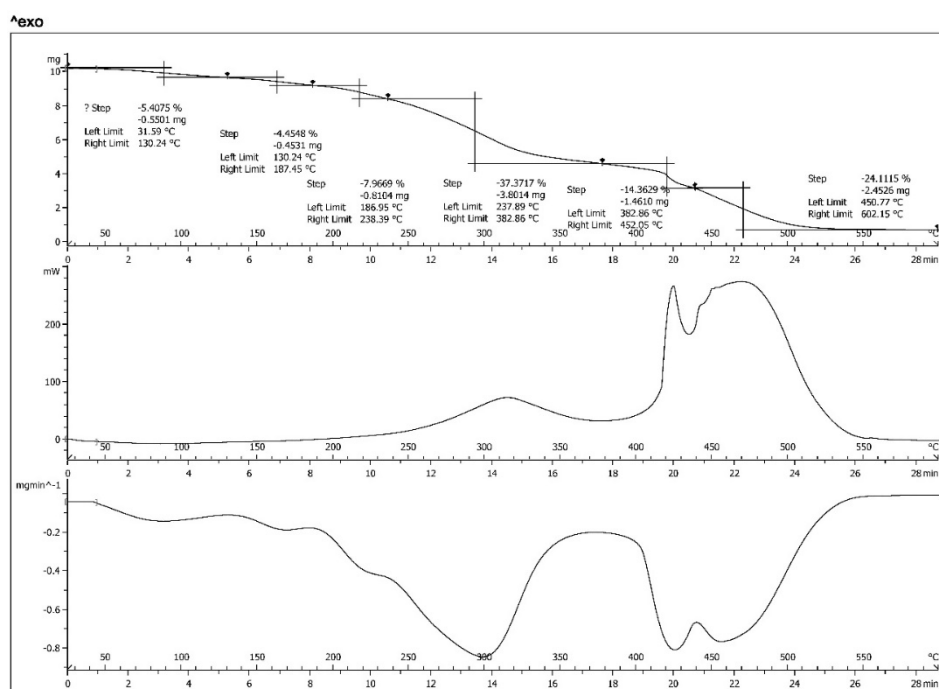


Figure S1. DSC and TG curves of *Hibiscus syriacus* flowers

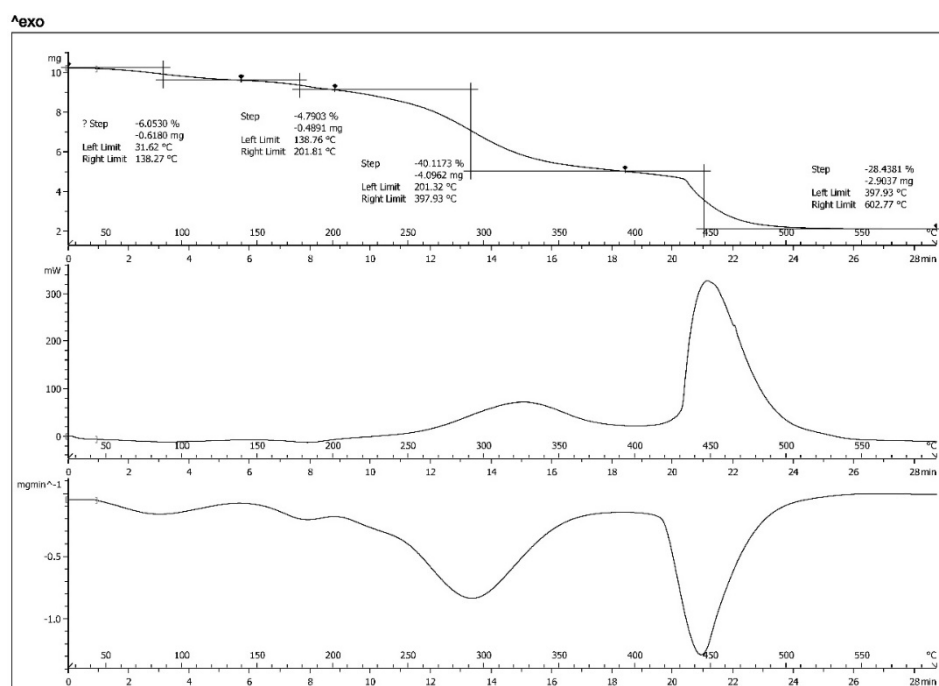


Figure S2. DSC and TG curves of *Hibiscus syriacus* leaves

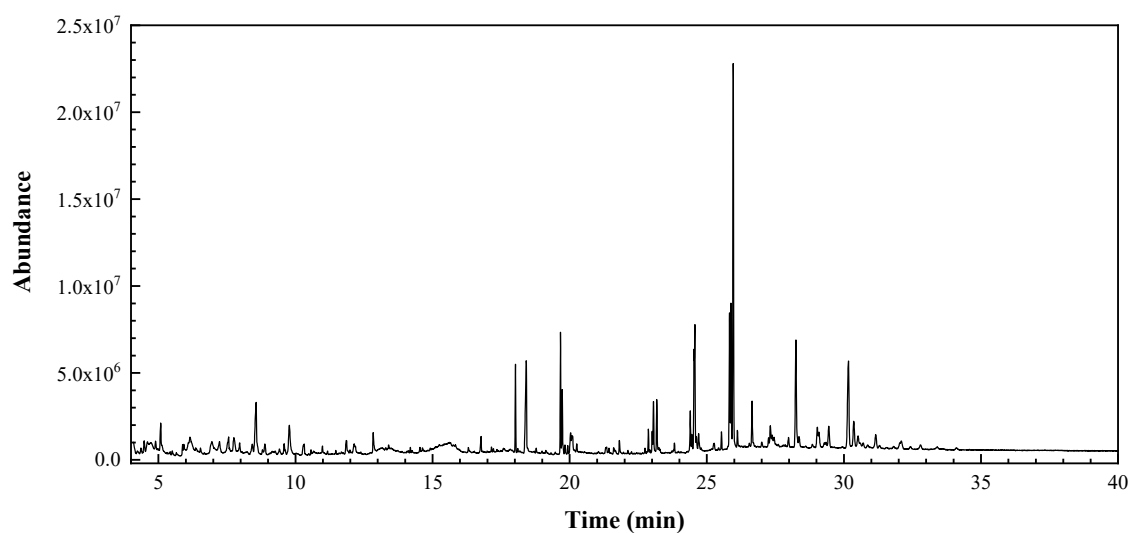


Figure S3. GC–MS chromatogram of *Hibiscus syriacus* flower hydromethanolic extract

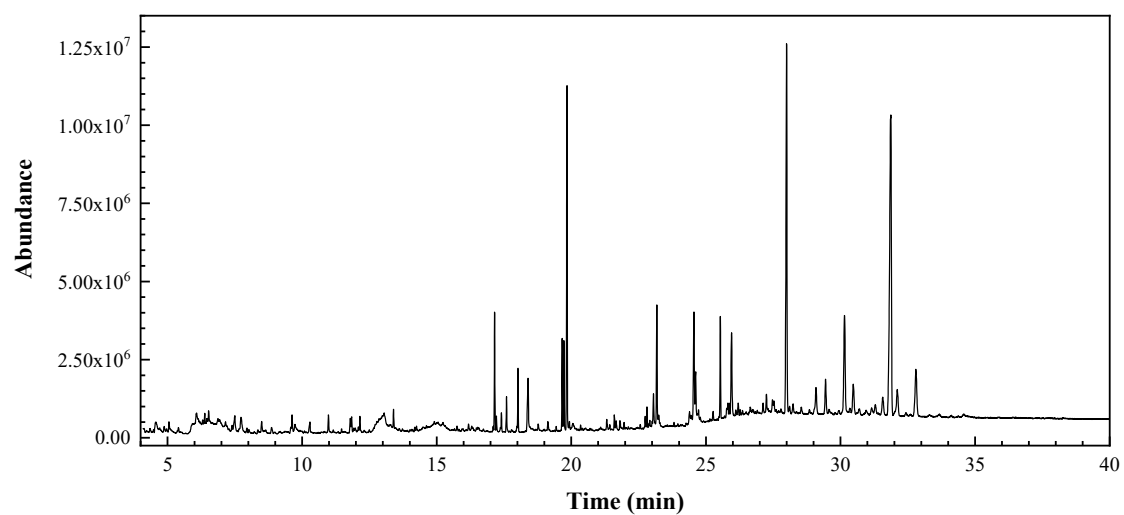


Figure S4. GC–MS chromatogram of *Hibiscus syriacus* leaf hydromethanolic extract

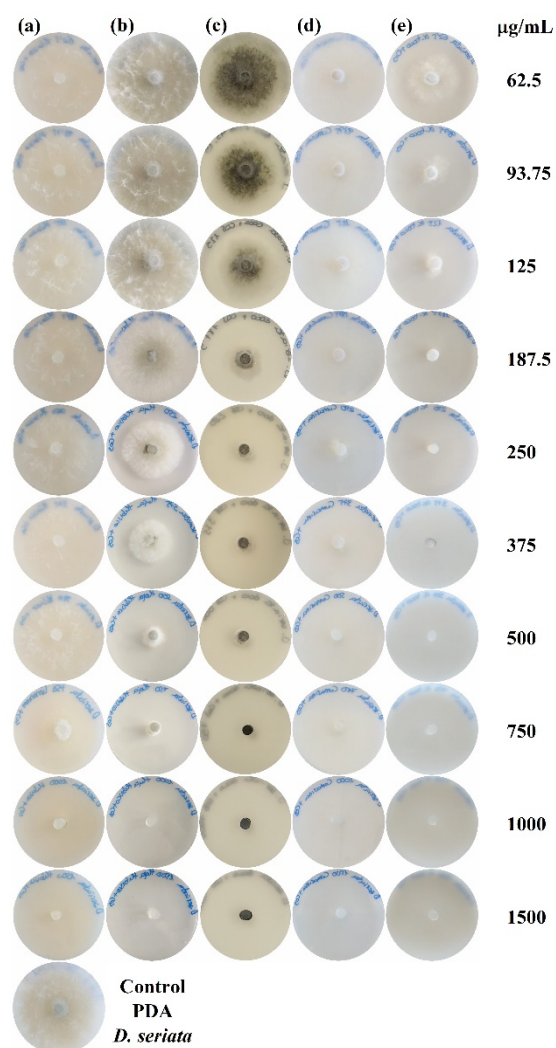


Figure S5. Growth inhibition of *D. seriata* for the conjugate complexes under study: **(a)** COS–flower extract; **(b)** COS–leaf extract; **(c)** COS–heptacosanol; **(d)** COS–DHTMC; **(e)** COS–vitamin E. Treatment doses from top to bottom: 62.5, 93.75, 125, 187.5, 250, 375, 500, 750, 1000 and 1500 $\mu\text{g}\cdot\text{mL}^{-1}$. The control (PDA medium without amendments) is shown in the bottom left corner. Only one replicate is shown.