

Supplementary information

The anti-inflammatory and the antinociceptive effects of mixed *Agrimonia pilosa* Ledeb. and *Salvia miltiorrhiza* Bunge extract

Jinghui Feng^{1,2,†}, Hyun Yong Kim^{3,†}, Su Min Sim^{1,2}, Guanglei Zuo³, Jeon Sub Jung², Seung Hwan Hwang^{3,4}, Youn Gil Kwak⁵, Min Jung Kim⁵, Jeong Hun Jo⁵, Sung Chan Kim⁶, Soon Sung Lim^{3,*} and Hong Won Suh^{1,2,*}

¹ Department of Pharmacology, College of Medicine, Hallym University, 1 Hallymdaehak-gil, Chuncheon, Gangwon-do 24252, Republic of Korea; B17501@hallym.ac.kr (J.H.F.); sumin@hallym.ac.kr (S.M.S.); hwsuh@hallym.ac.kr (H.W.S.)

² Institute of Natural Medicine, College of Medicine, Hallym University, 1 Hallymdaehak-gil, Chuncheon, Gangwon-do 24252, Republic of Korea; de3180@hallym.ac.kr (J.S.J.)

³ Department of Food Science and Nutrition, College of Natural Science, Hallym University, 1 Hallymdaehak-gil, Chuncheon, Gangwon-do 24252, Republic of Korea; khy9514@nate.com (H.Y.K.); B16504@hallym.ac.kr (G.L.Z.); isohsh@gmail.com (S.H.H.); limss@hallym.ac.kr (S.S.L.)

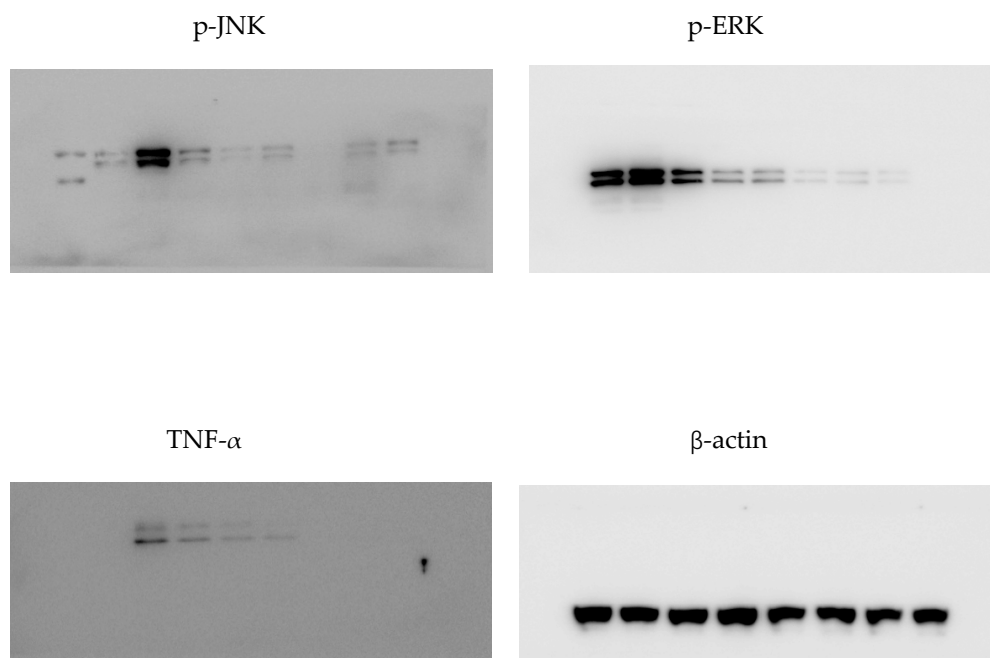
⁴ R&D Center, Huons Co., Ltd., 55 Hanyangdaehak-ro, Ansan, Gyeonggi-do 15588, Republic of Korea;

⁵ Research Institute, Huons Nature, Geumsan, Choong-cheong Nam-do 32742, Republic of Korea; kyg@huonsnature.com (Y.G.K.); jas.mjkim@gmail.com (M.J.K.); jhjo@huonsnature.com (J.H.J.)

⁶ Department of Biochemistry, College of Medicine, Hallym University, 1 Hallymdaehak-gil, Chuncheon, Gangwon-do 24252, Republic of Korea; biokim@hallym.ac.kr

† The authors contributed to the manuscript in equal measure.

* Co-Correspondence: limss@hallym.ac.kr; Tel.: +82 33 248 2133; and hwsuh@hallym.ac.kr; Tel.: +82-33-248-2614

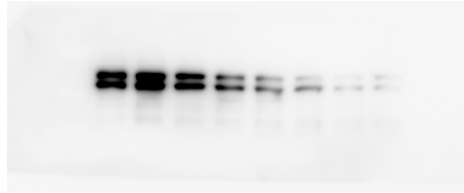


Supplementary Figure 1. Representative full-gel images of Western blots in Figure 5A.

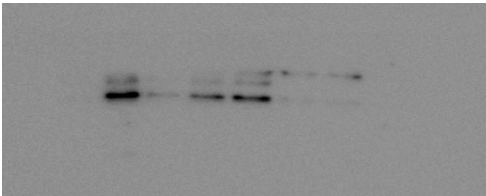
p-JNK



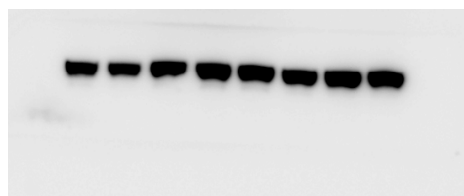
p-ERK



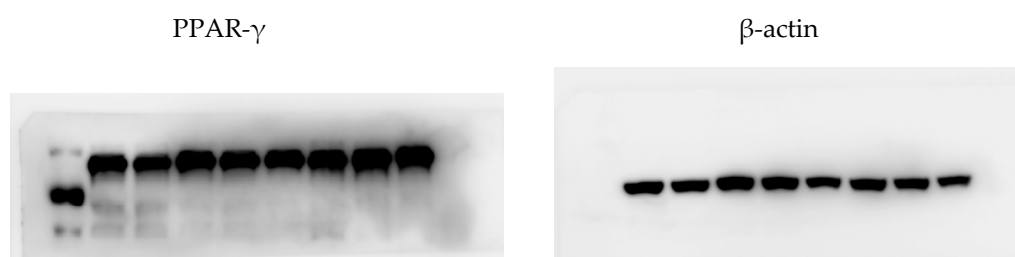
TNF- α



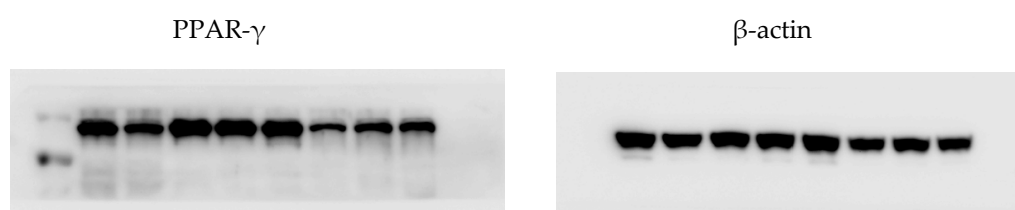
β -actin



Supplementary Figure 2. Representative full-gel images of Western blots in Figure 6A.



Supplementary Figure 3. Representative full-gel images of Western blots in Figure 7A.



Supplementary Figure 4. Representative full-gel images of Western blots in Figure 7B.