

QTL Mapping for Gummy Stem Blight Resistance in Watermelon (*Citrullus* spp.)

Eun Su Lee ¹, Do-Sun Kim ¹, Sang Gyu Kim ¹, Yun-Chan Huh ², Chang-Gi Back ³, Ye-Rin Lee ¹,
Muhammad Irfan Siddique ¹, Koeun Han ¹, Hye-Eun Lee ^{1,*} and Jundae Lee ^{4,*}

*Correspondence: helee72@korea.kr; Tel.: +82-063-238-6674; Fax: +82-063-238-6605 (H.-E.L.); ajfall@jbnu.ac.kr;
Tel.: +82-063-270-2560 (J.L.)

Supplementary Material

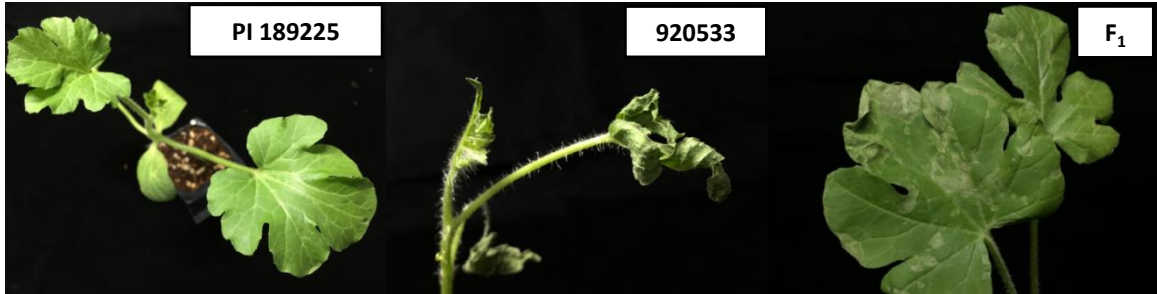


Figure S1. Gummy stem blight (GSB) reactions on the leaves of resistant parent 'PI 189225', susceptible parent '920533', and F_1 .

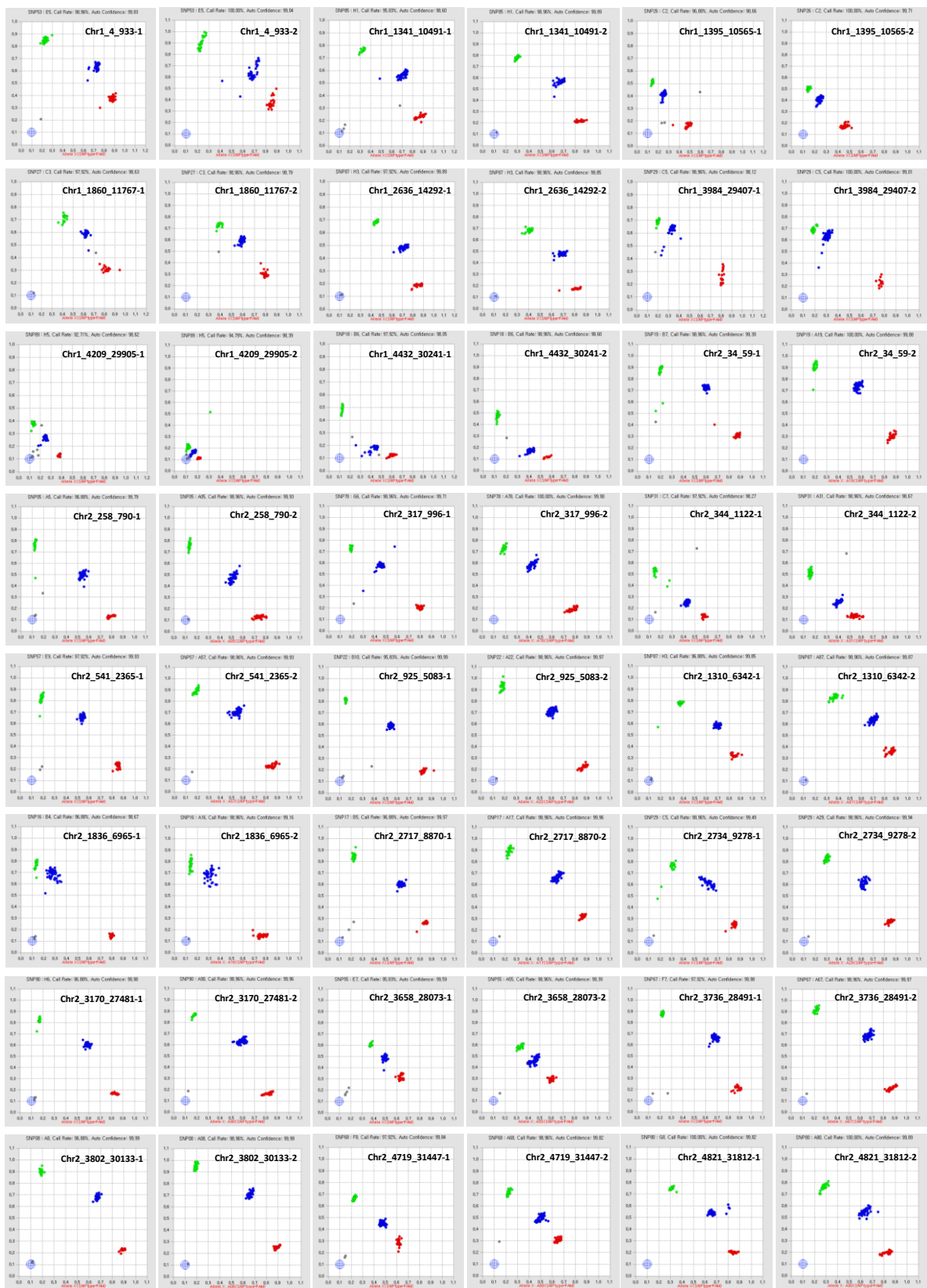


Figure S2. SNP genotyping using Fluidigm® SNP Type™ assays for two parents, F_1 , and 178 individuals of the F_2 population. chr1_4_933-1 and chr1_4_933-2 represent scatter plotting of a chr1_4_933 assays for F_2 individuals from 1 to 89 and from 90 to 178, respectively.

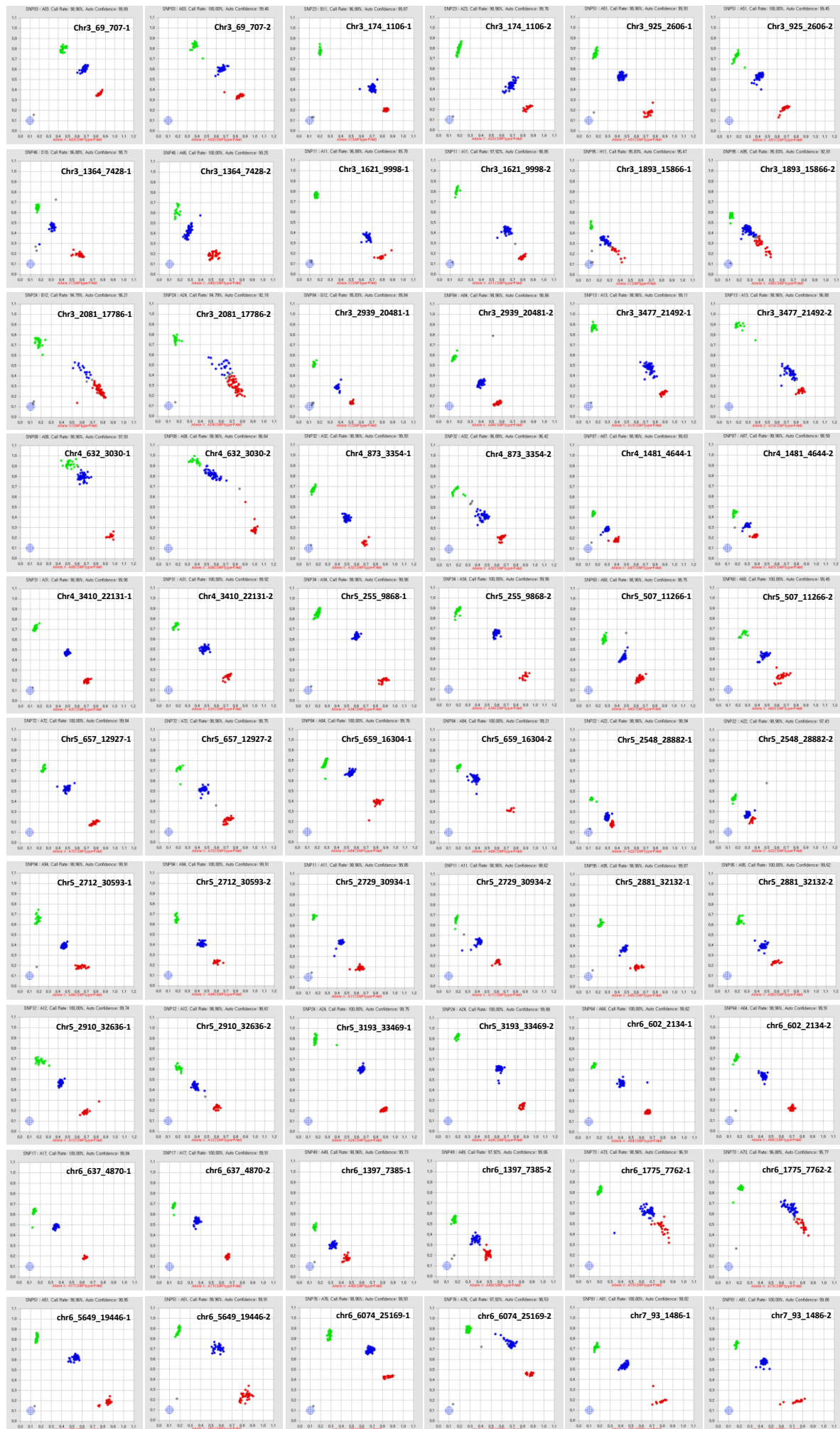


Figure S2. *Cont.*

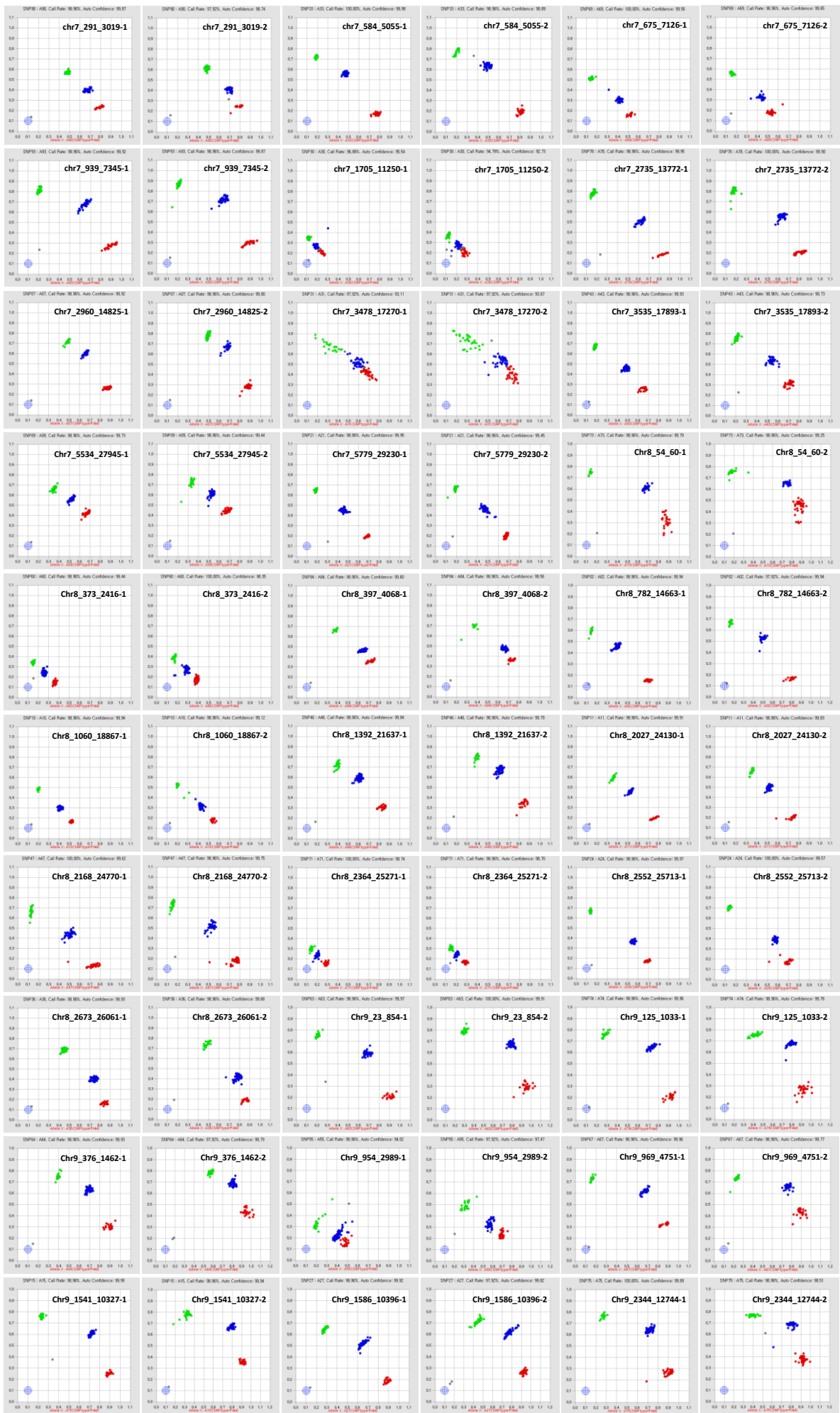
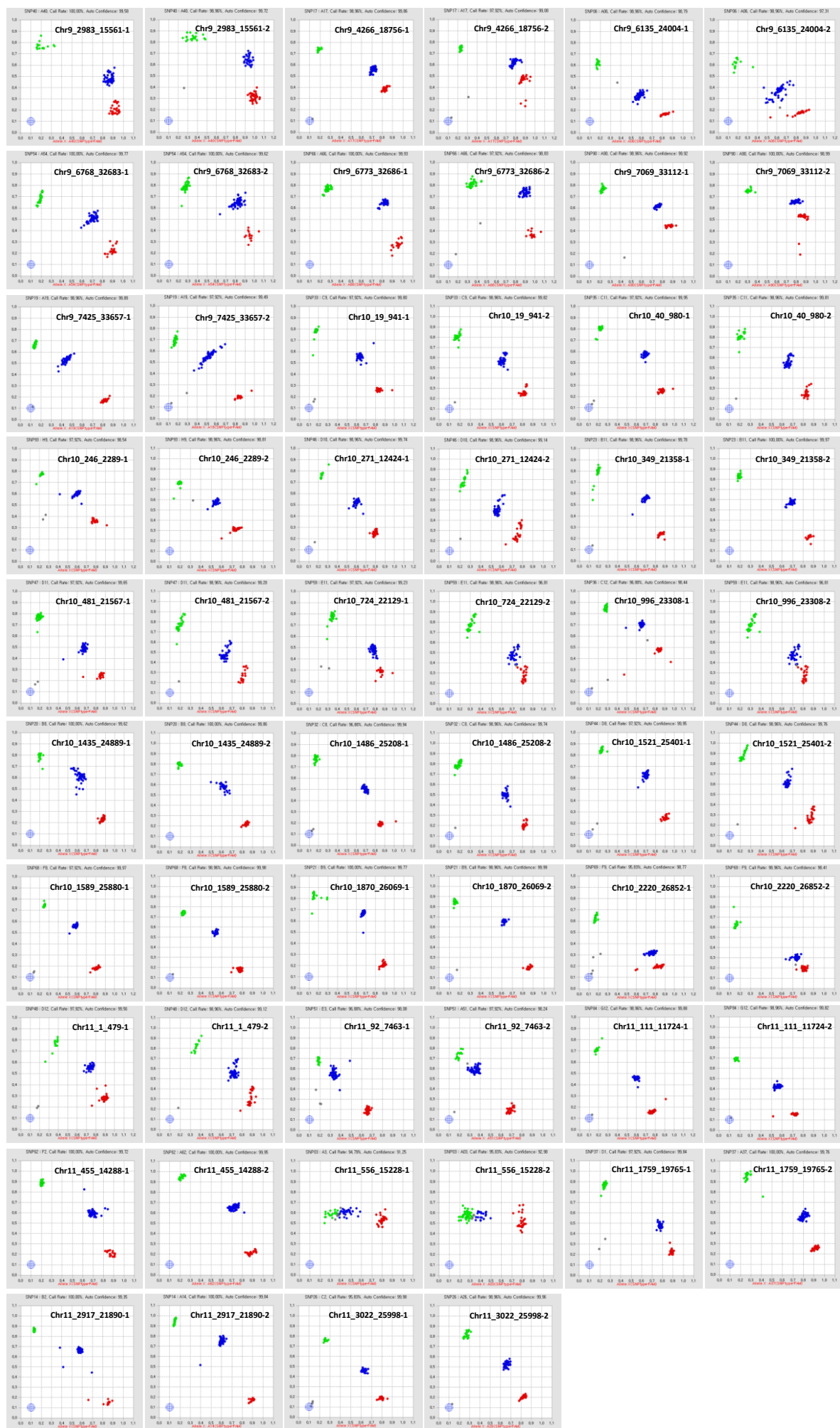


Figure S2. *Cont.*



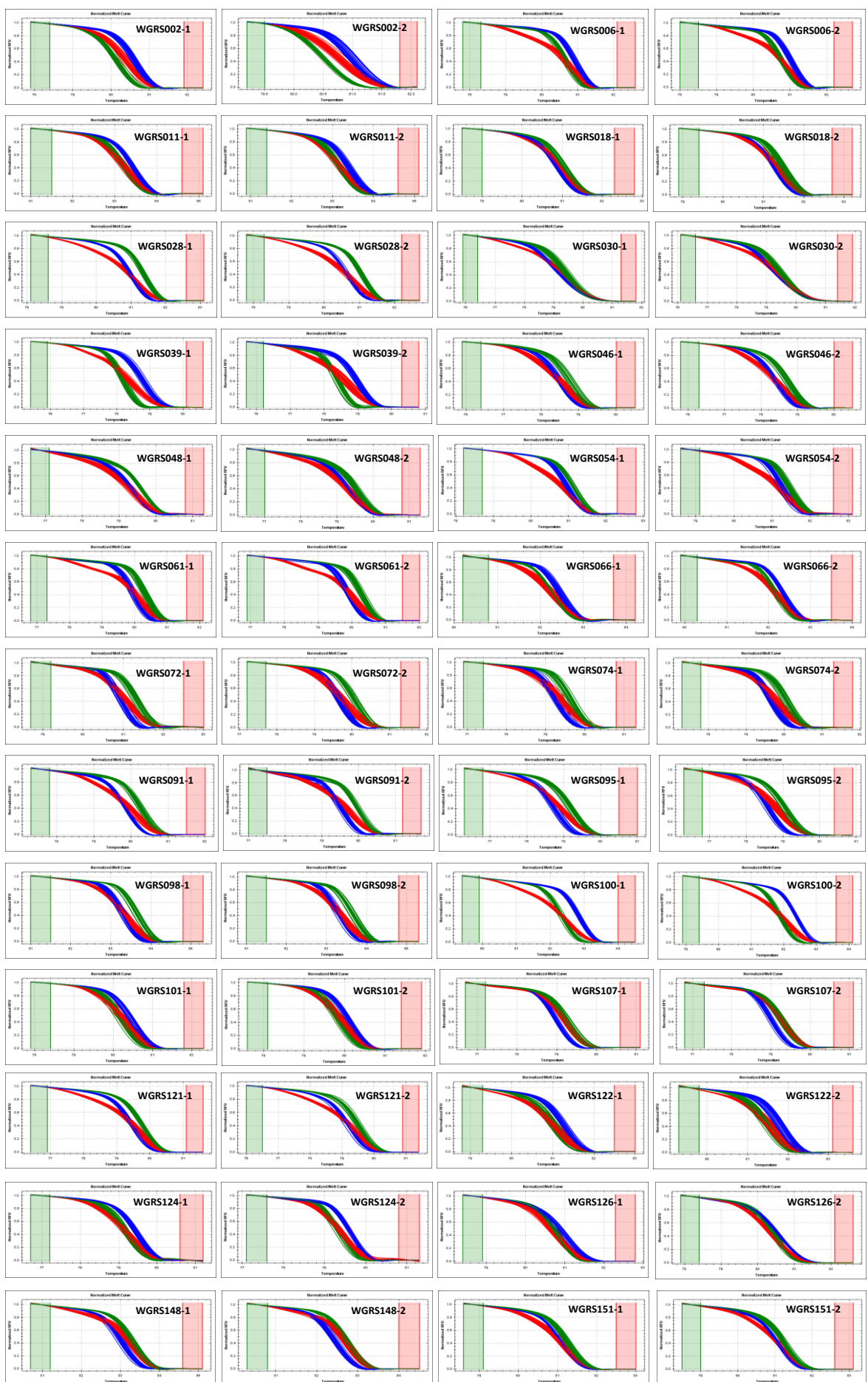


Figure S3. Melting curves of 88 polymorphic HRM markers for two parents, F_1 , and 178 individuals of the F_2 population. WGRS002-1 and WGRS002-2 represent melting curves of a WGRS002 HRM marker for F_2 individuals from 1 to 89 and from 90 to 178, respectively.

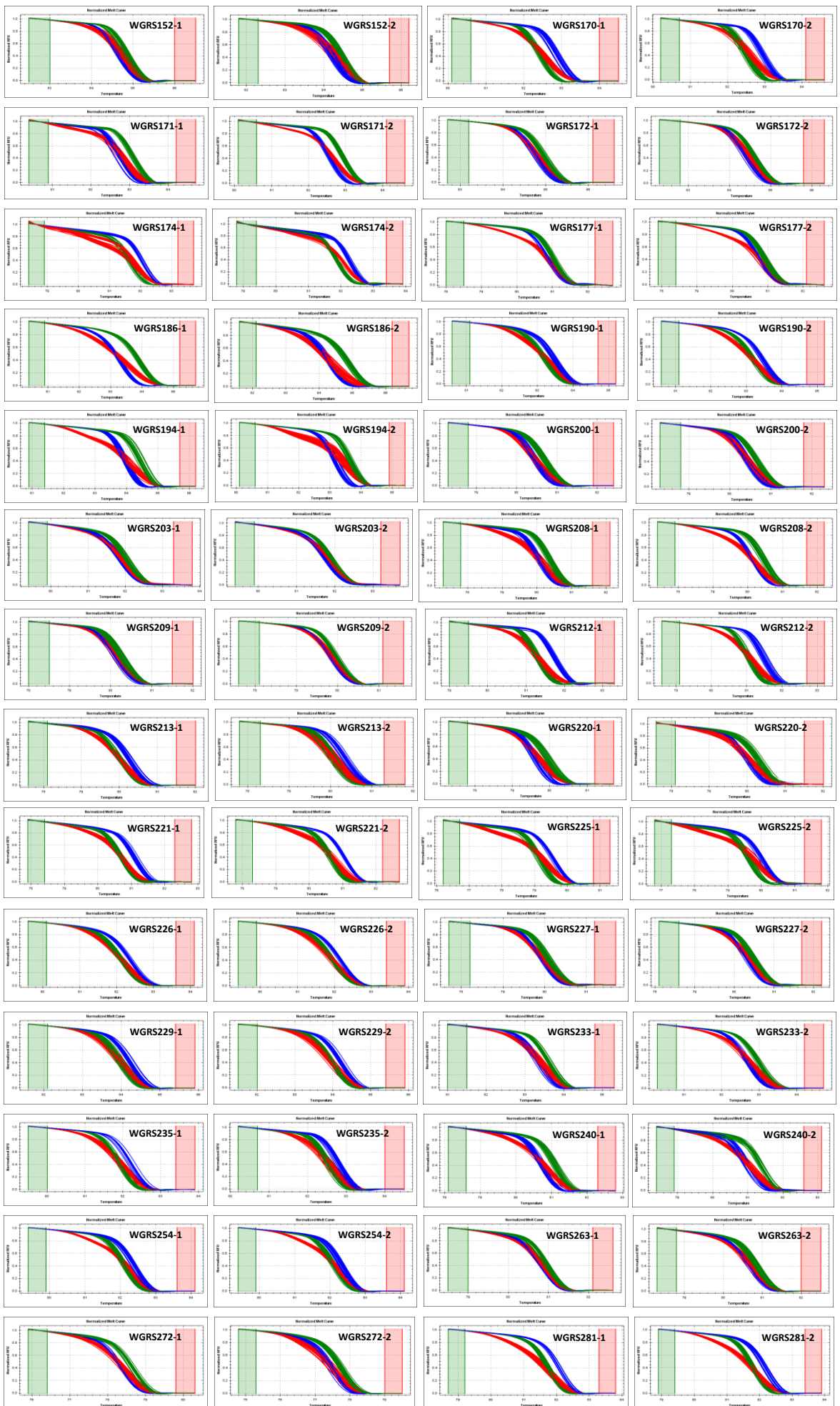


Figure S3. Cont.

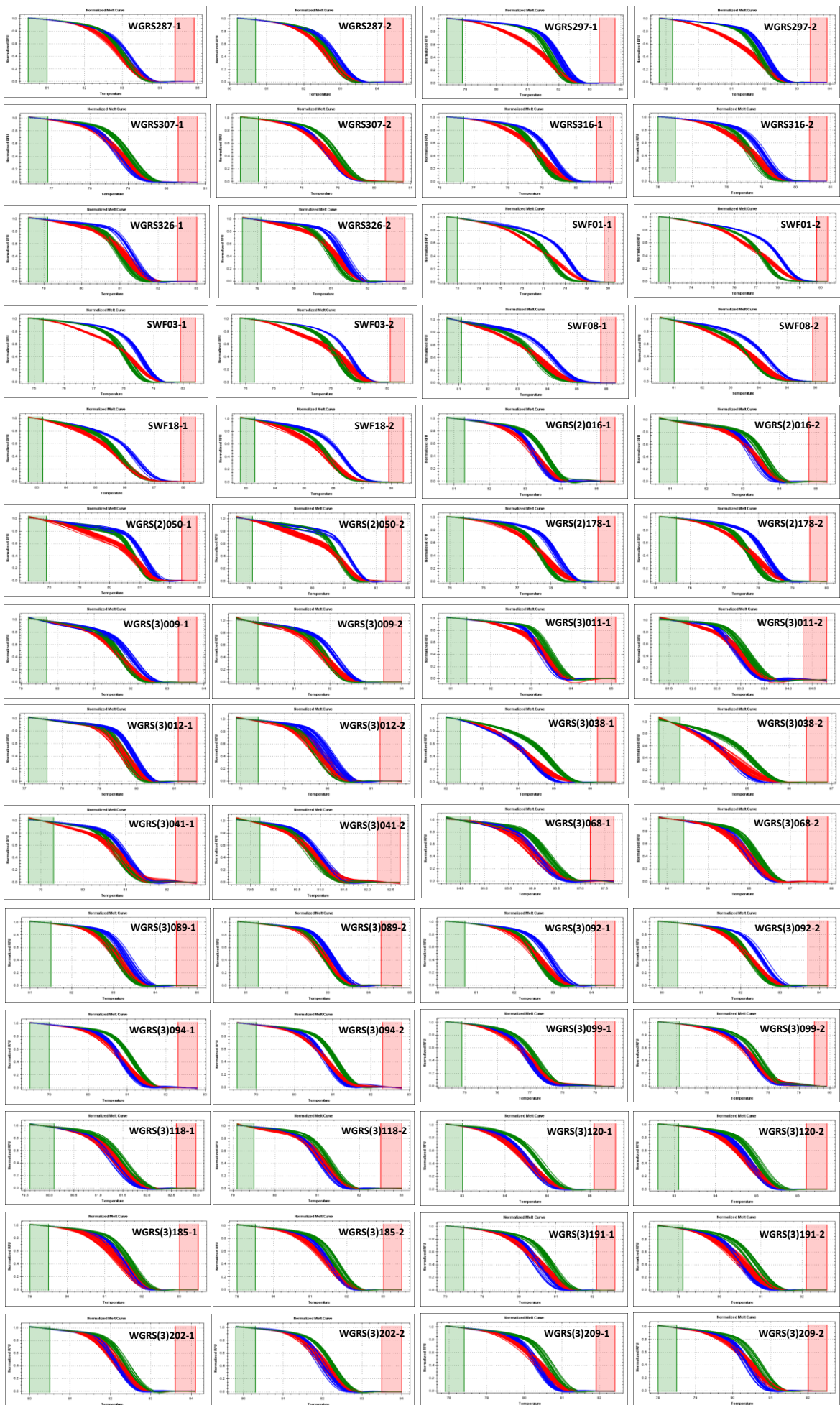


Figure S3. Cont.

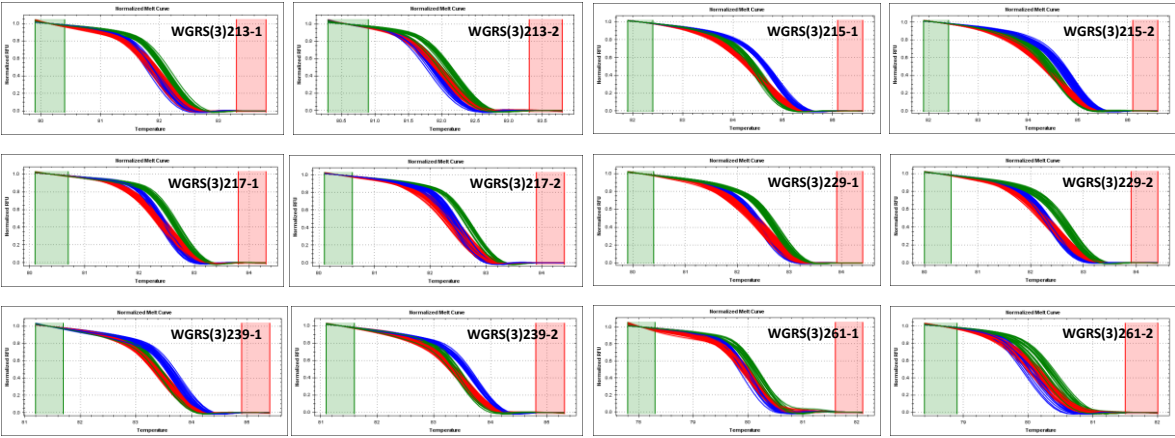


Figure S3. *Cont.*

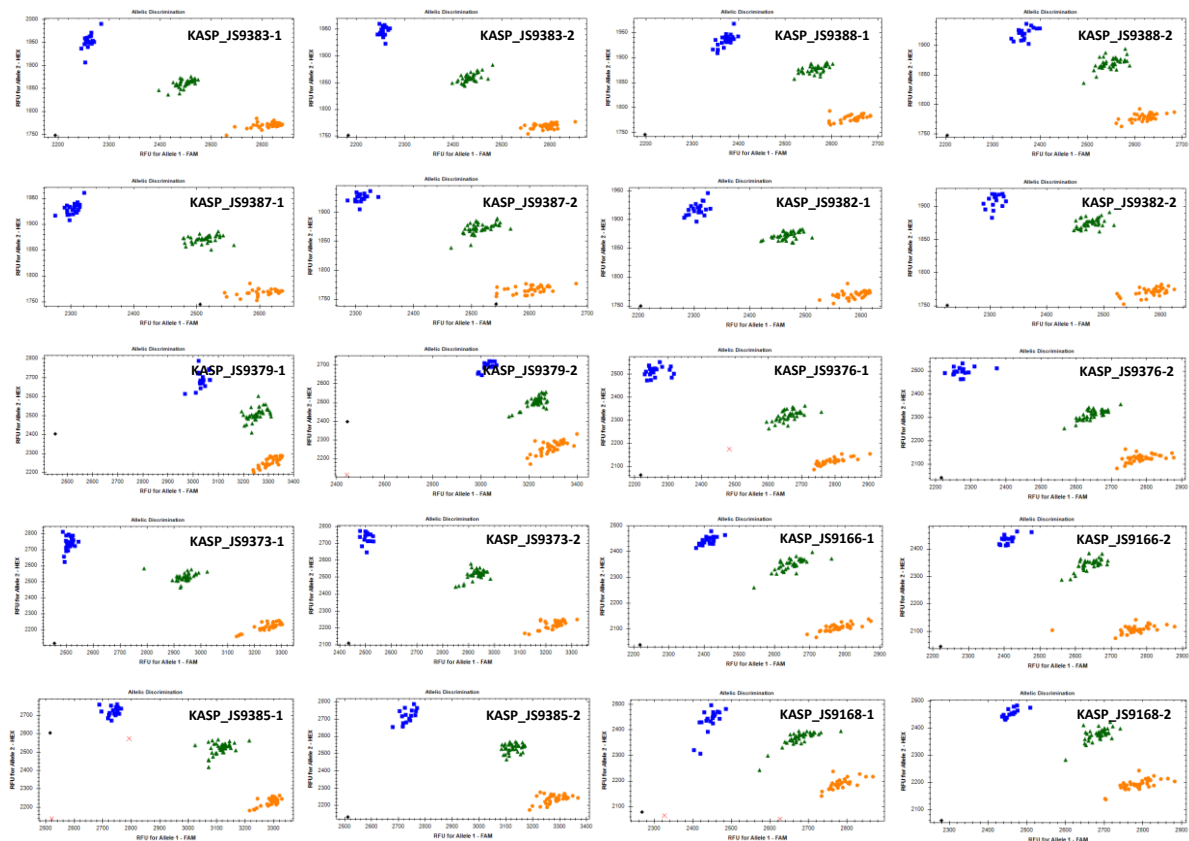


Figure S4. SNP genotyping of KASPTM markers for two parents, F_1 , 178 individuals of the F_2 population. Genotyping of previously reported 10 KASP makers to construct a genetic linkage map. KASP_JS9383-1 and KASP_JS9383-2 represent scatter plotting of a KASP_JS9383 marker for F_2 individuals from 1 to 89 and from 90 to 178, respectively.

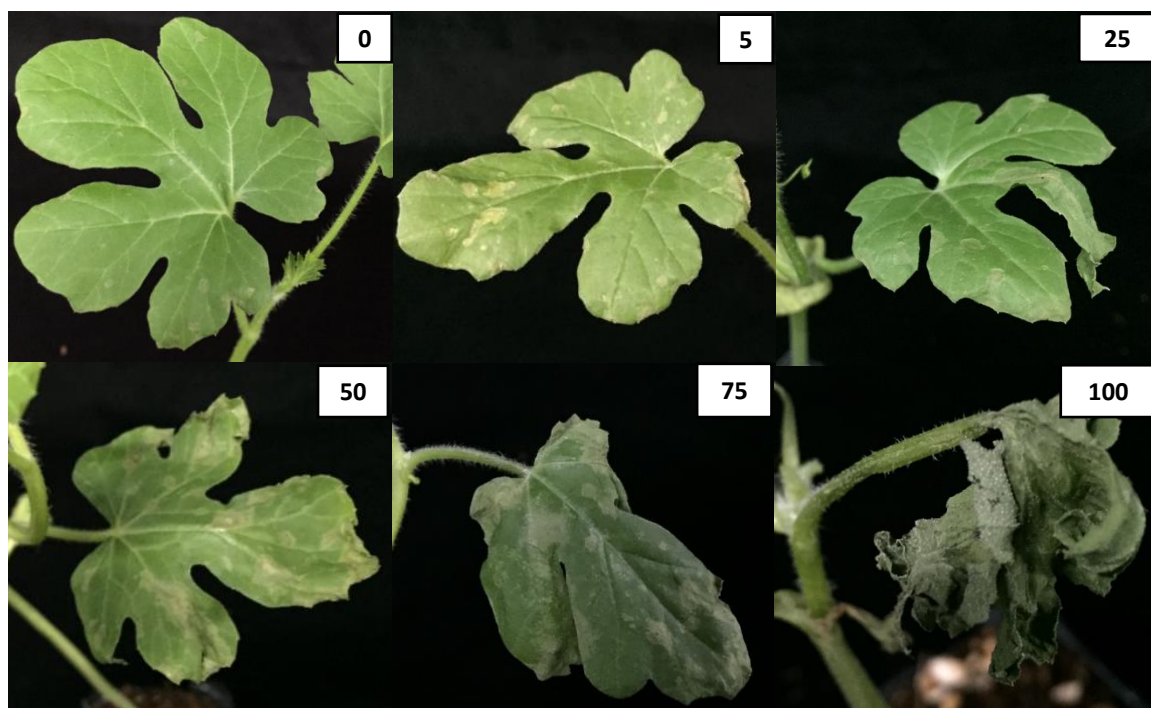


Figure S5. Evaluation of disease severity using leaf lesion (LL) area. The leaf lesion (%) was measured by calculating the ratio of GSB lesion area to the total leaf area on infected plants. Where 0, no leaf lesion; 5, 5% leaf lesion; 25, 25% leaf lesion; 50, 50% leaf lesion; 75, 75% leaf lesion; 100, 100% leaf lesion.



Figure S6. Symptoms caused by *Didymella bryoniae* on stem and petiole of test plants. Stem blight (SB) was scored at a scale of 0-3: Where 0, no symptoms; 1, moderate symptoms; 2, slight necrosis; 3, severe blight symptoms.