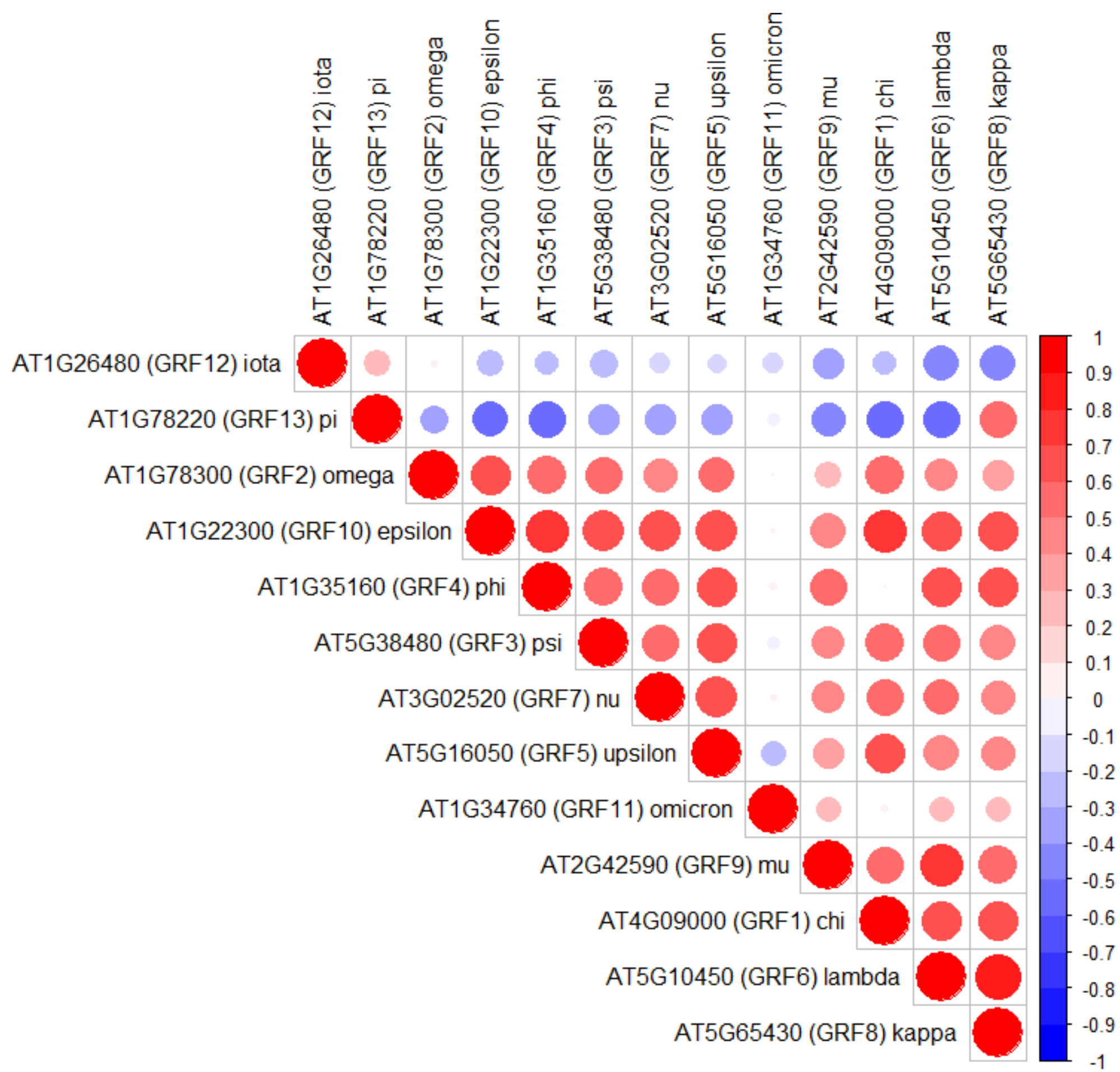
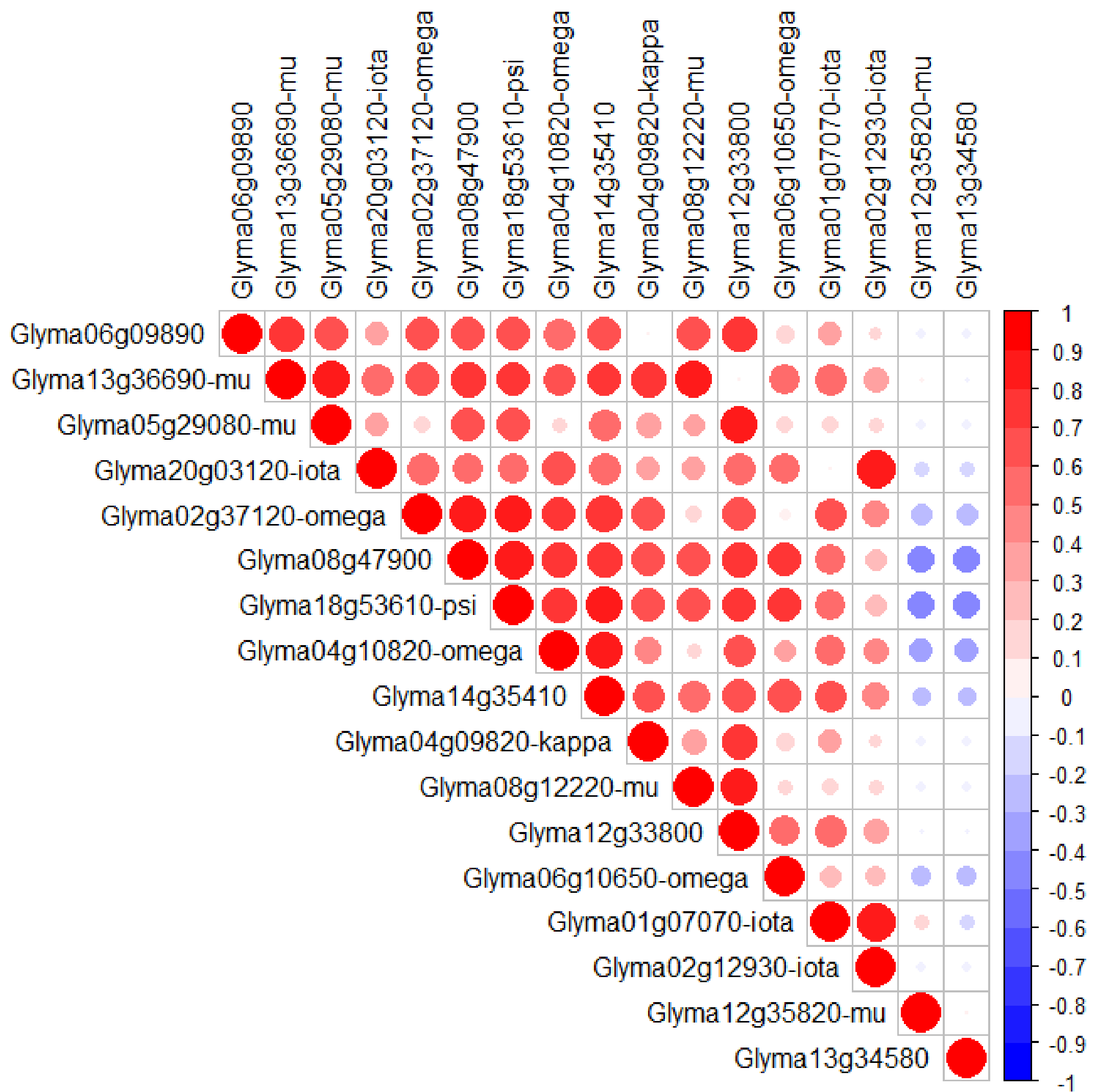


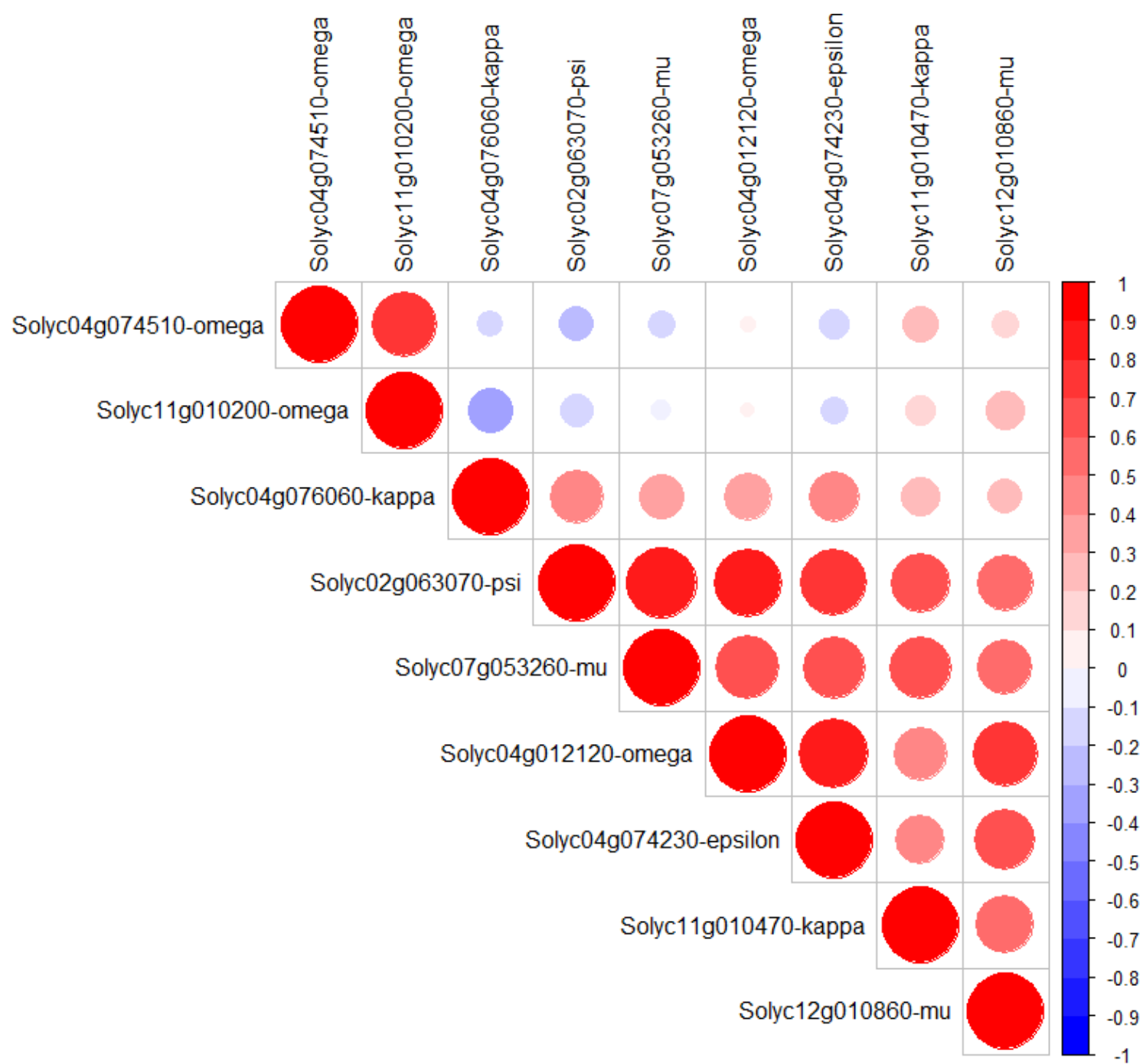
Figure S5  
Co-expression of 14-3-3s in *A. thaliana*, *S. lycopersicon*, *G. max*, *H. vulgare* and *O. sativa* inferred from PLANEX database.



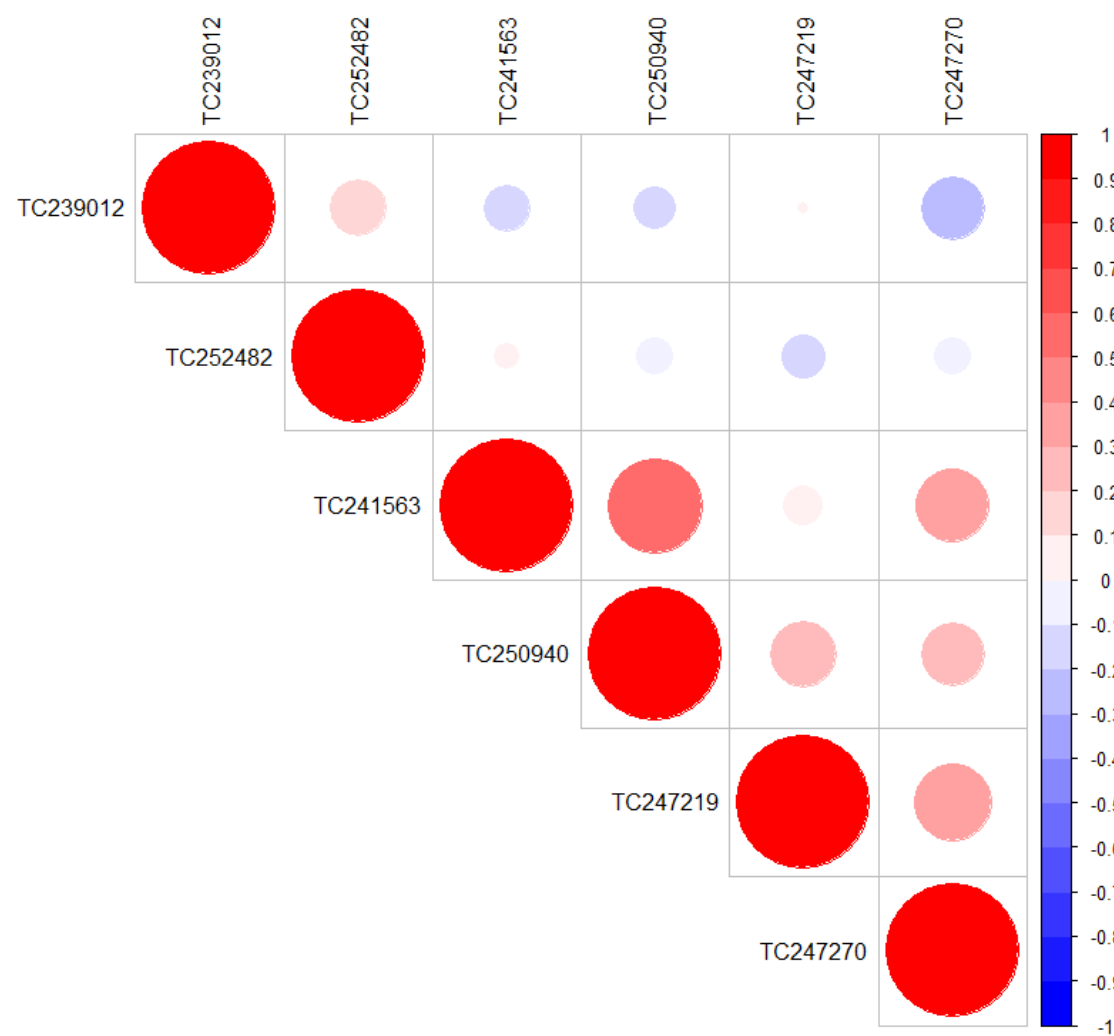
Co-expression of 14-3-3 proteins in *Arabidopsis thaliana*. Correlation heatmaps show PCCs between each pair of 14-3-3s. Positive correlations are displayed in red colour, negative correlations are displayed in blue colour. The size of the circle and the colour intensity are proportional to the PCCs.



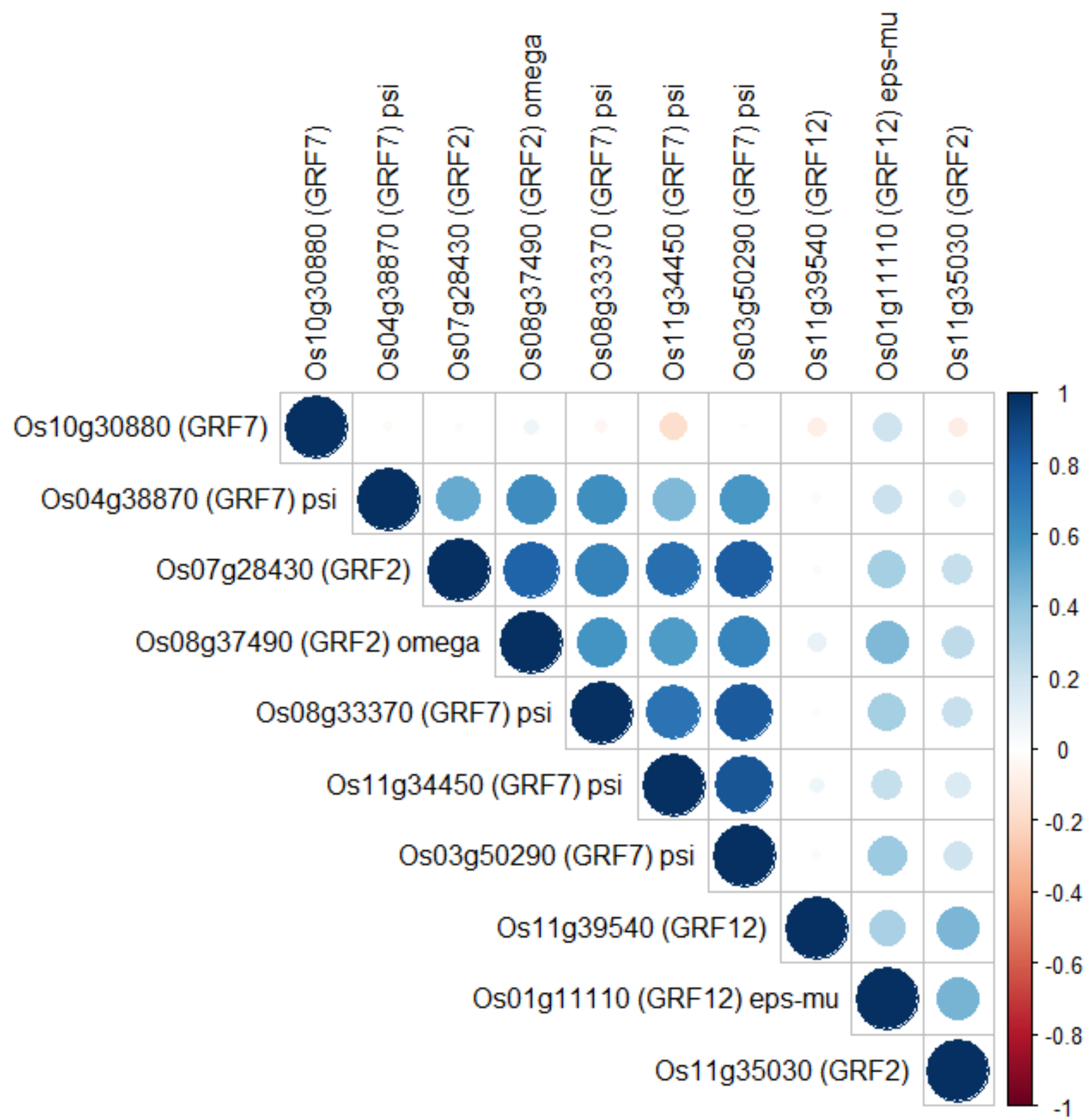
Co-expression of 14-3-3 proteins in *Glycine max*. Correlation heatmaps show PCCs between each pair of 14-3-3s. Positive correlations are displayed in red colour, negative correlations are displayed in blue colour. The size of the circle and the colour intensity are proportional to the PCCs.



Co-expression of 14-3-3 proteins in *Solanum lycopersicum*. Correlation heatmaps show PCCs between each pair of 14-3-3s. Positive correlations are displayed in red colour, negative correlations are displayed in blue colour. The size of the circle and the colour intensity are proportional to the PCCs.



Co-expression of 14-3-3 proteins in *Hordeum vulgare*. Correlation heatmaps show PCCs between each pair of 14-3-3s. Positive correlations are displayed in red colour, negative correlations are displayed in blue colour. The size of the circle and the colour intensity are proportional to the PCCs. Subfamily classification: TC250940 – omega, TC252482 – epsilon, TC241563 – psi A, TC247219 – Psi B, TC239012 – psi C, TC247270 – Psi E



Co-expression of 14-3-3 proteins in *Oryza sativa*. Correlation heatmaps show PCCs between each pair of 14-3-3s. Positive correlations are displayed in blue colour, negative correlations are displayed in red colour. The size of the circle and the colour intensity are proportional to the PCCs.