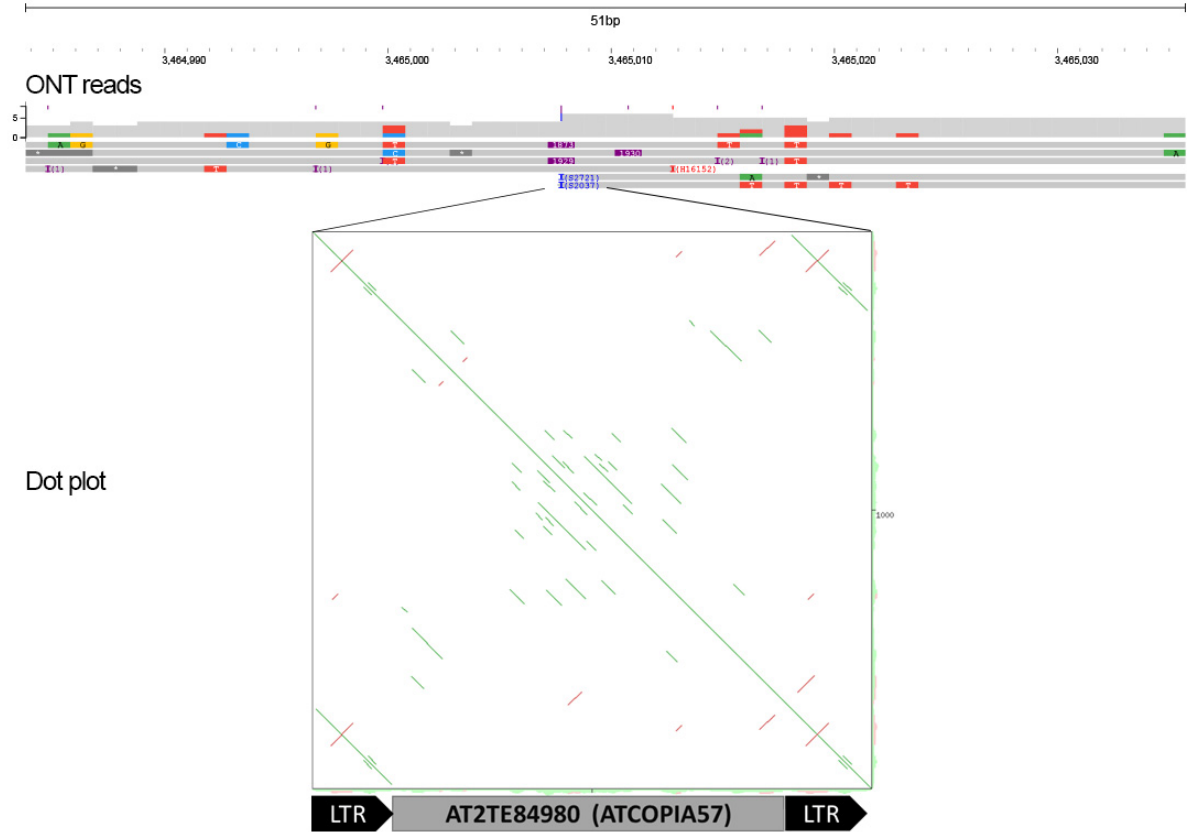
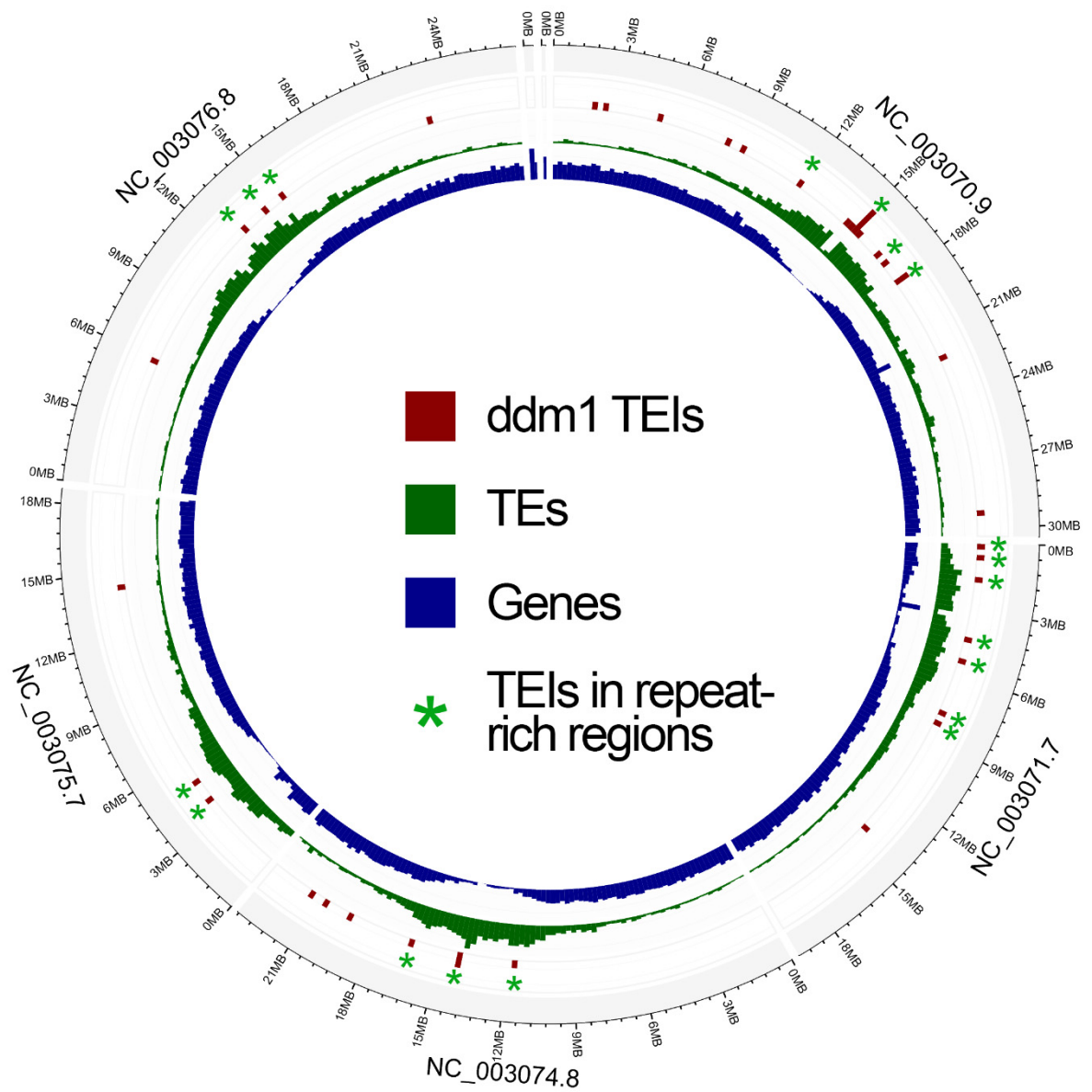


Supplementary Figure S1. Number of colTEIs per TE subfamily. Colors correspond to superfamily classification.

Chr4: 3,464,984..3,465,035



Supplementary Figure S2. Read alignment and TEI site of AT2TE84980 and dot plot showing the sequence similarity with full-length TE.



Supplementary Figure S3. Circos plot showing the distribution of all ddm1 TEIs, annotated TEs and genes of *A. thaliana*. TEIs located in repeat-rich regions (pericentromeric regions) are labeled by green asterisk.