

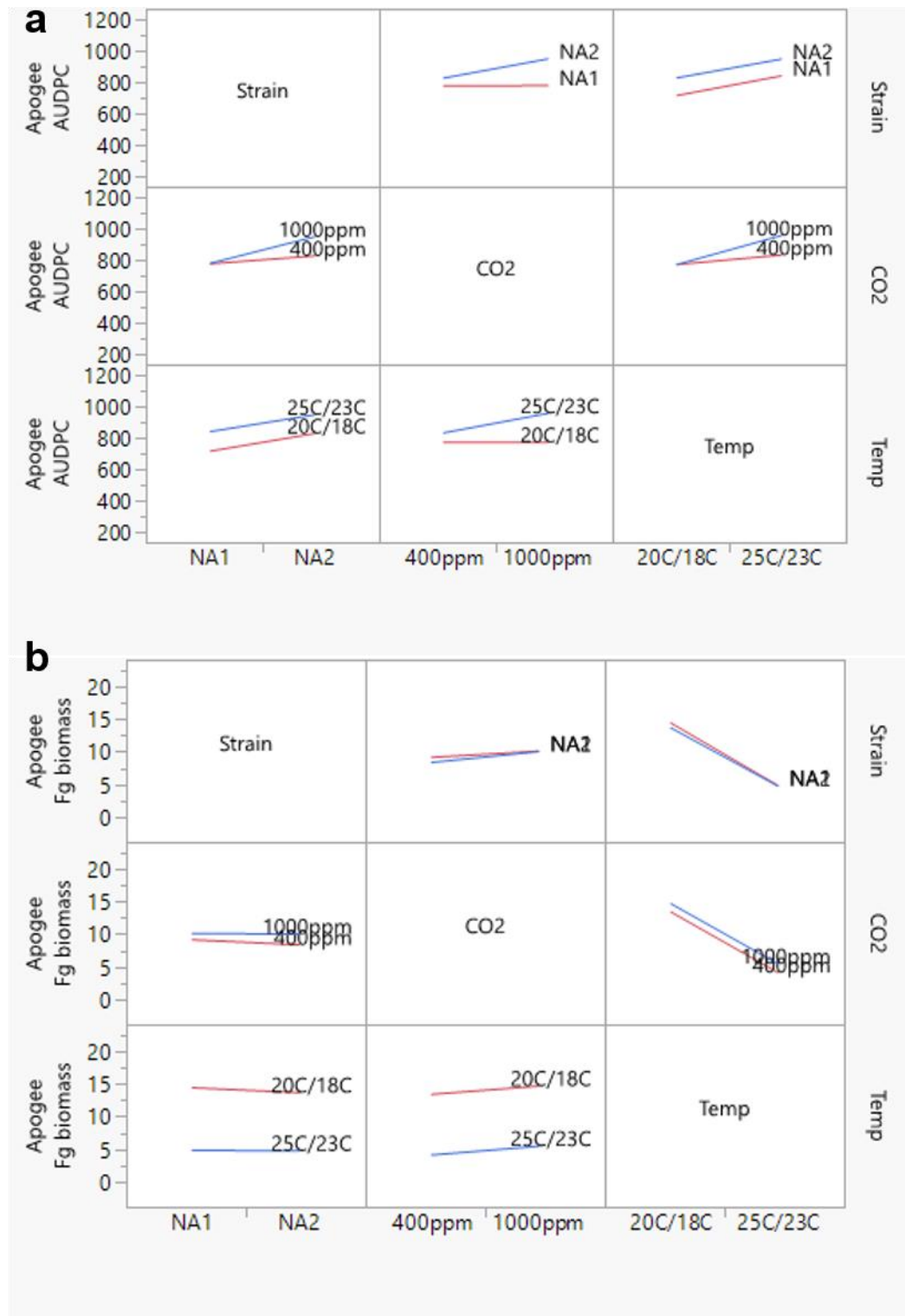
Supplemental Information:

TITLE: Effects of atmospheric CO₂ and temperature on wheat and corn susceptibility to *Fusarium graminearum* and deoxynivalenol contamination.

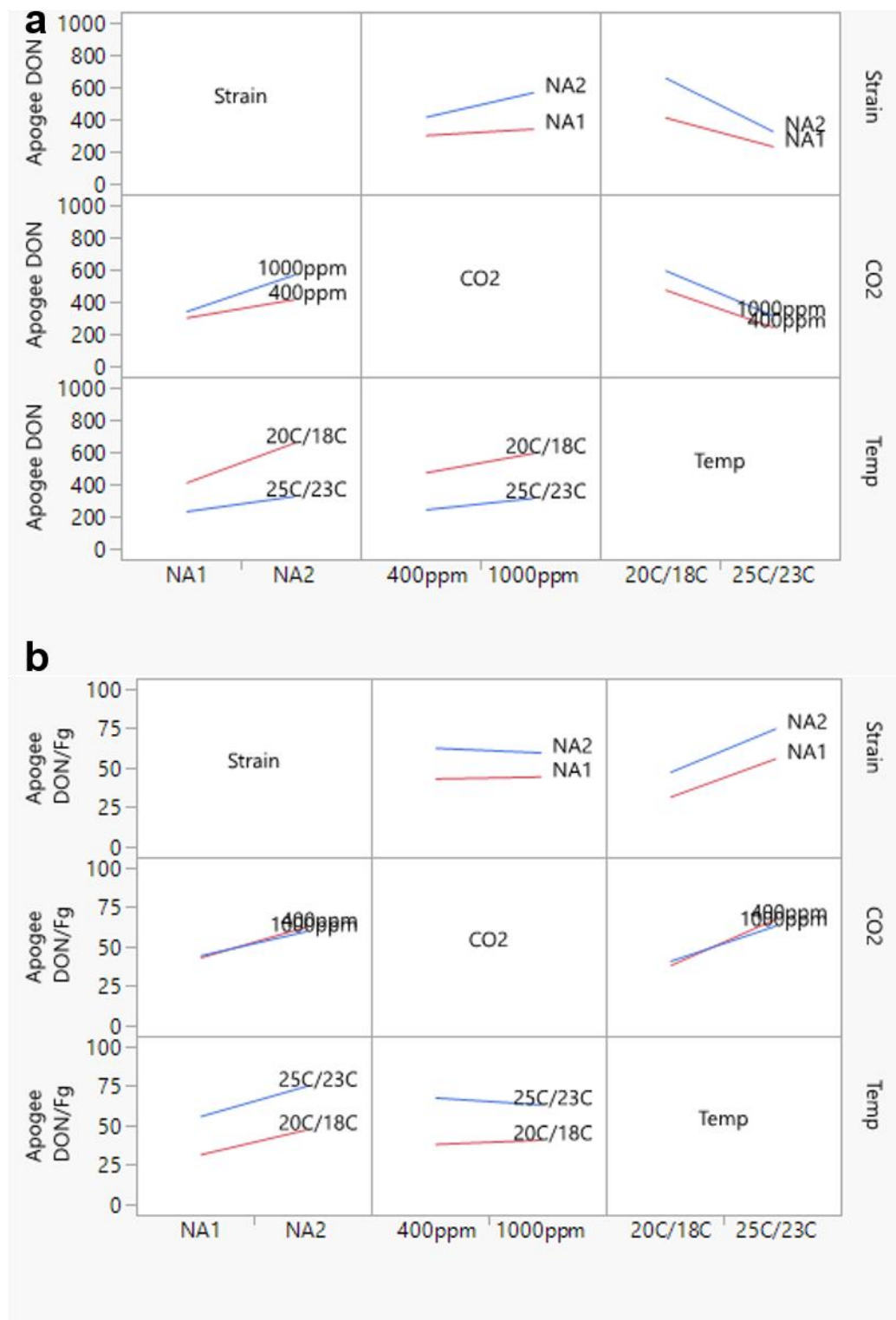
William T. Hay^{1*}, Susan P. McCormick¹, Martha M. Vaughan¹

¹ USDA, Agricultural Research Service, National Center for Agricultural Utilization Research, Mycotoxin Prevention and Applied Microbiology Research Unit, 1815 N. University, Peoria, IL 61604, USA

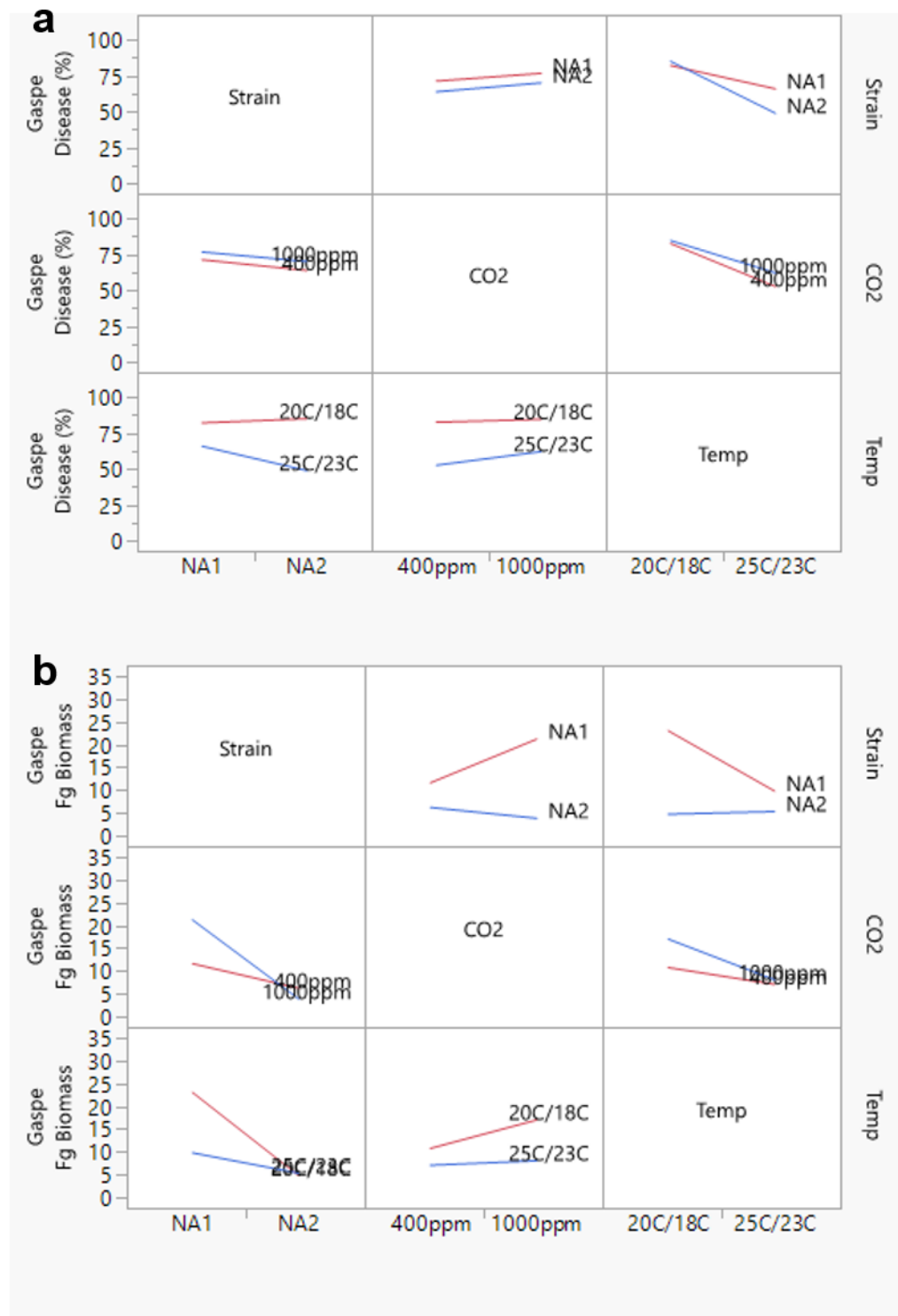
*Corresponding author: William.Hay@usda.gov ; ORCID ID: 0000-0001-8784-6591



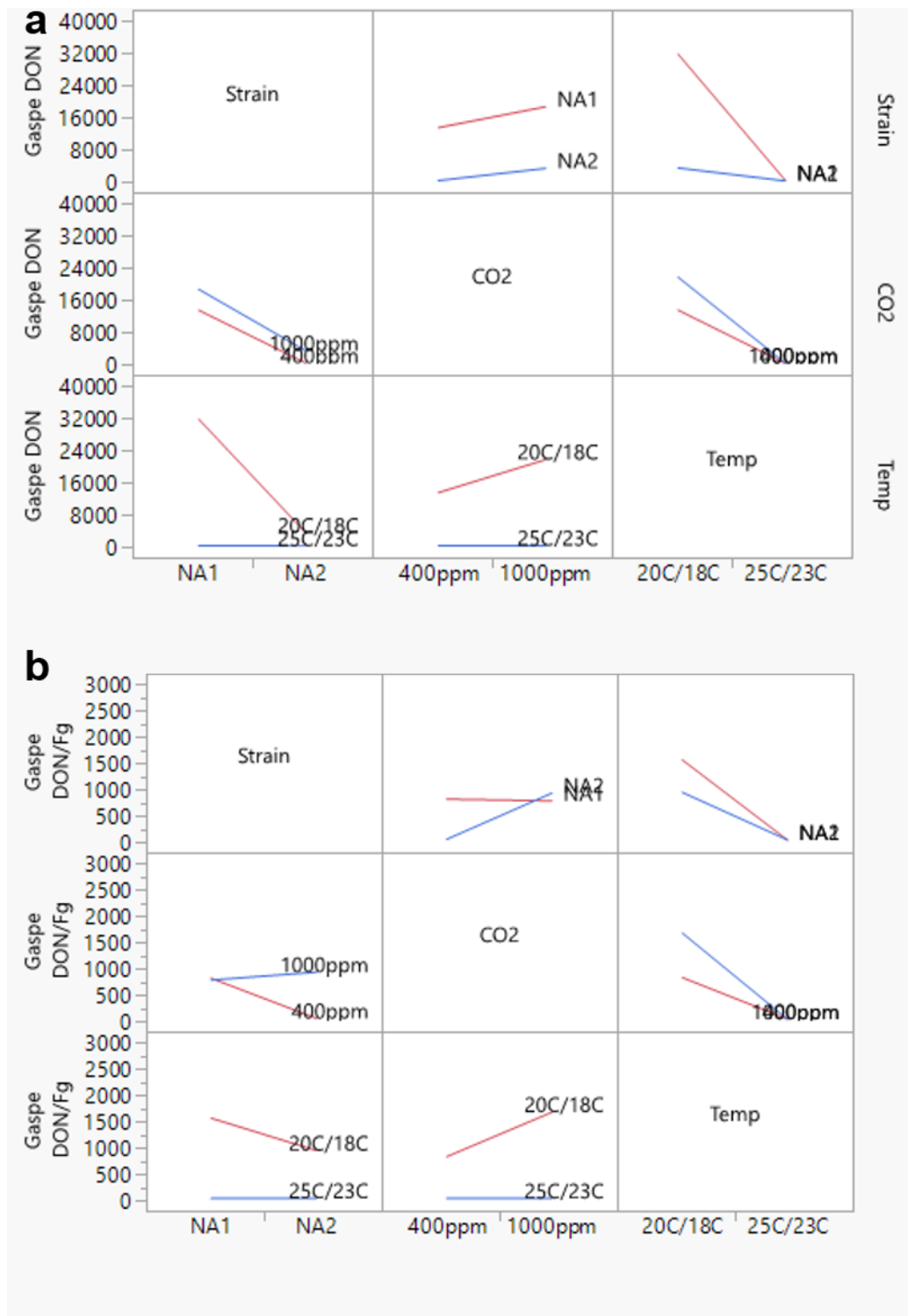
Supplemental Figure S1. Interaction plots generated in JMP demonstrating correlations of variables presented in Figure #2 in the main manuscript.



Supplemental Figure S2. Interaction plots generated in JMP demonstrating correlations of variables presented in Figure #3 in the main manuscript.



Supplemental Figure S3. Interaction plots generated in JMP demonstrating correlations of variables presented in Figure #4 in the main manuscript.



Supplemental Figure S4. Interaction plots generated in JMP demonstrating correlations of variables presented in Figure #5 in the main manuscript.