

Figure S1. Measurement of ATPase activity in microsomal membrane fractions. The samples used for determining H⁺-ATPase activity were collected in M-Apr and August (see Table 1). The activity values were obtained after addition of 1 mM vanadate or 50 mM KNO₃. Control represents activity without an inhibitor. Data are the means of three replicates (error bars = SDs). **p* < 0.05 (Dunnett test).

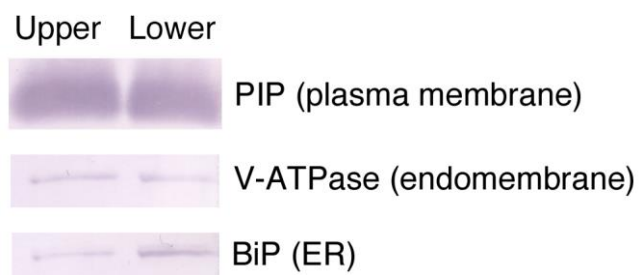


Figure S2. Fractionation of crude microsomal membranes. Crude microsomal membranes of moso bamboo were partitioned by aqueous two-polymer phase system (Yoshida et al., 1983). Plasma membrane intrinsic protein (PIP), V-ATPase, and BiP were immunodetected in each fraction. Upper; upper phase, Lower; lower phase of the aqueous two-polymer system.

Supplemental reference

Yoshida S, Uemura M, Niki T, Sakai A, Gusta LV. Partition of membrane particles in aqueous two-polymer phase system and its practical use for purification of plasma membranes from plants. *Plant Physiol.* 1983, 72, 105-114.