

Supplementary Material

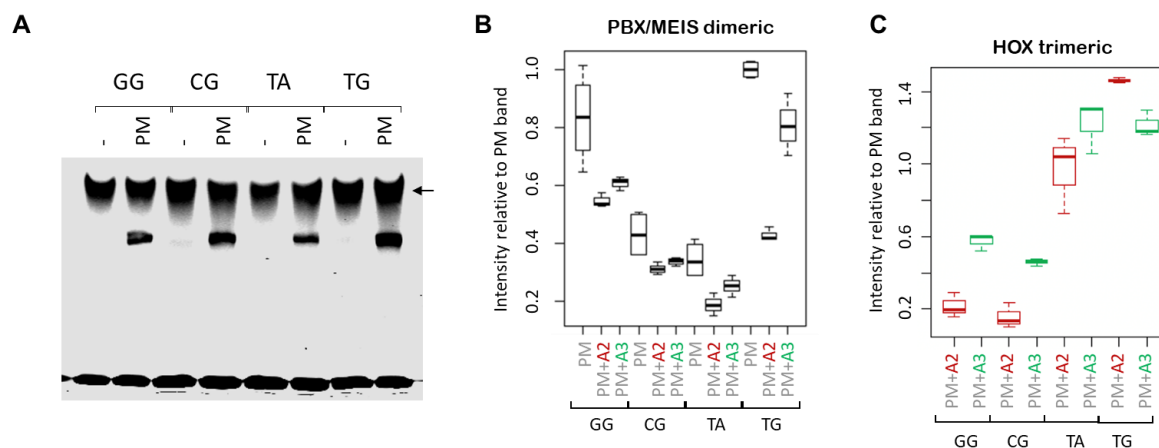


Figure S1. A. Binding to the *Meis2* probes detailed in Fig. 1B, in the presence and absence of PBX/MEIS (PM). All probes tested displayed the same nonspecific binding (black arrow). B. Quantification of PBX/MEIS (PM) band from experiments in Fig 1C and 2B (3 replicates). PBX/MEIS band in the absence of HOXA reduced in CG and TA mutants relative to wild-type. All bands quantified relative to the wild-type PBX/MEIS band. C. Quantification of HOXA/PBX/MEIS bands from experiments in Fig 1C and 2B (3 replicates). In contrast to wild-type, CG and GG mutants have stronger binding of HOXA3 with PBX/MEIS than HOXA2.

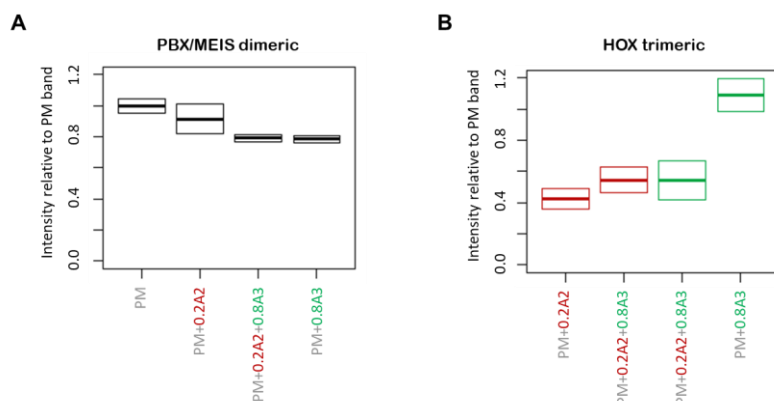


Figure S2. A. Quantification of PBX/MEIS (PM) band from experiments in Fig 4B (2 replicates). B. Quantification of HOXA/PBX/MEIS bands from experiments in Fig 4B (2 replicates). HOXA3 binding is reduced in the presence of HOXA2, but a 4x excess of HOXA3 is unable to displace HOXA2.

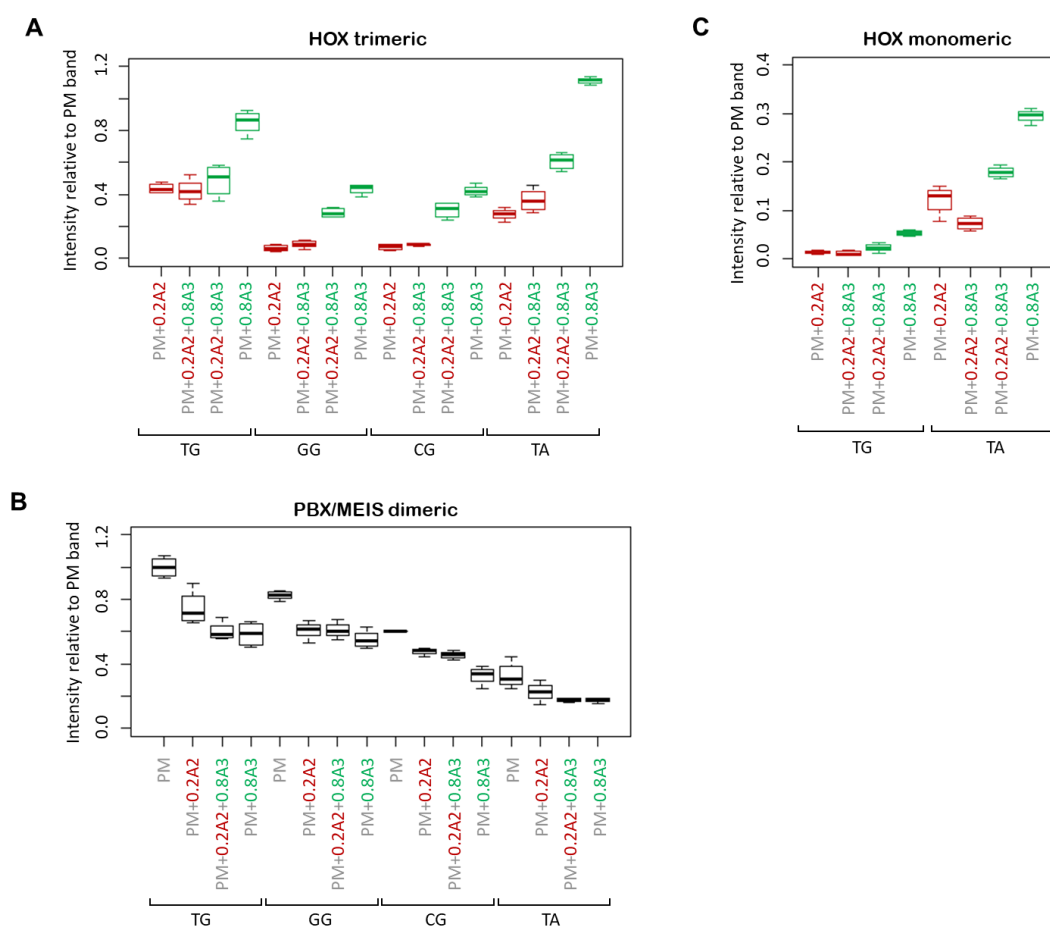


Figure S3. A. Quantification of HOXA/PBX/MEIS bands from experiment in Fig 4C (3 replicates). B. Quantification of PBX/MEIS (PM) band from experiment in Fig 4C (3 replicates). C. Quantification of HOXA bands from experiment in Fig 4C (3 replicates).