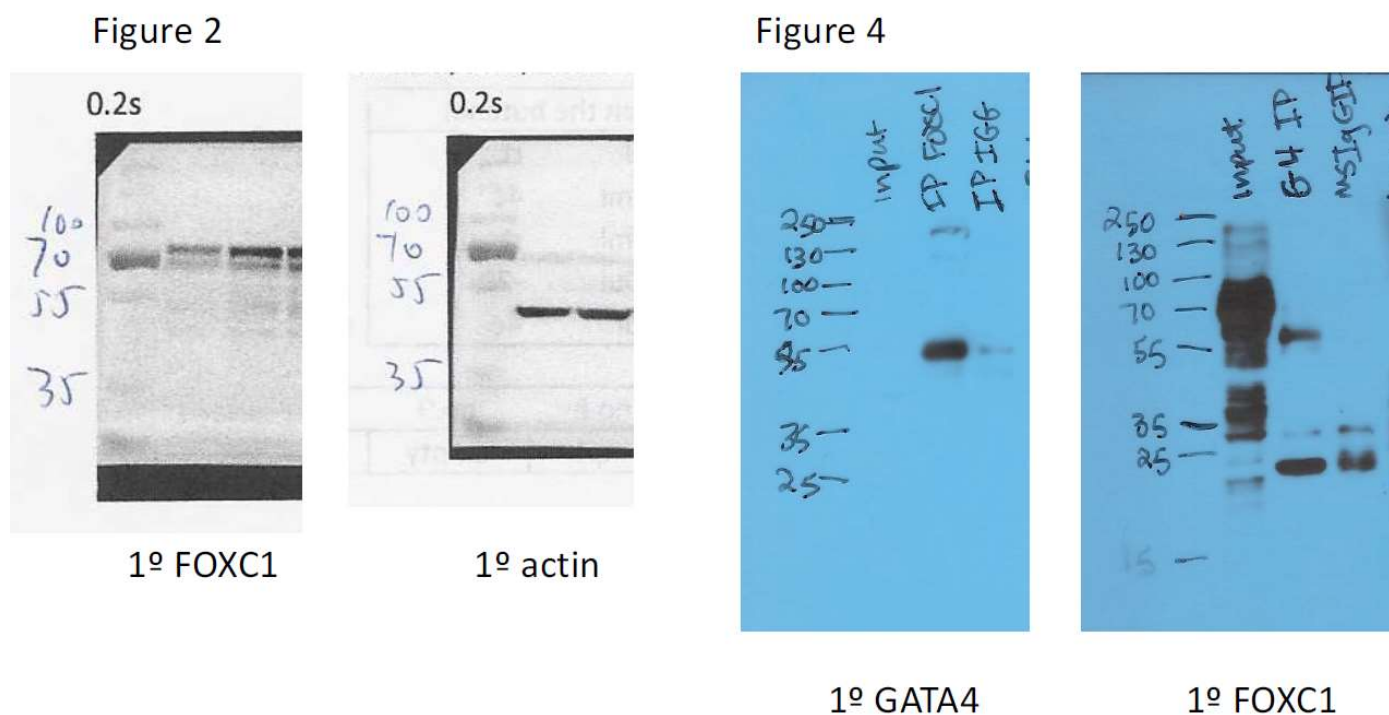
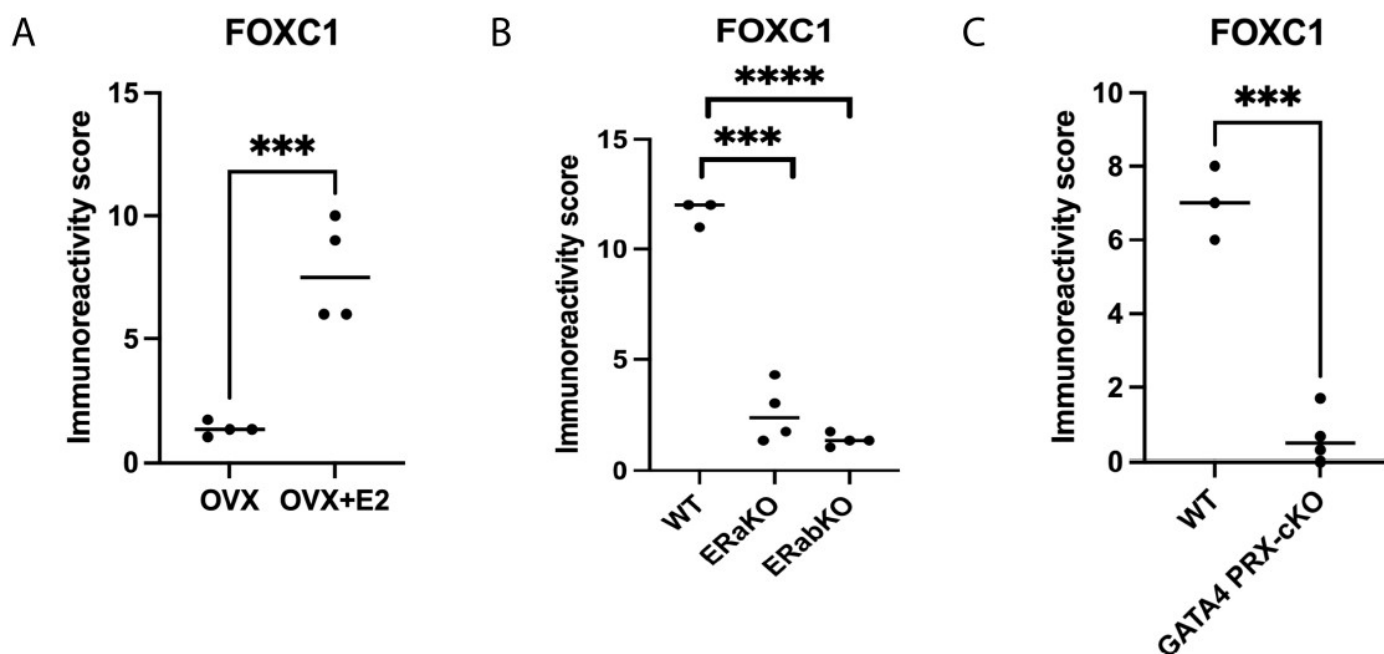


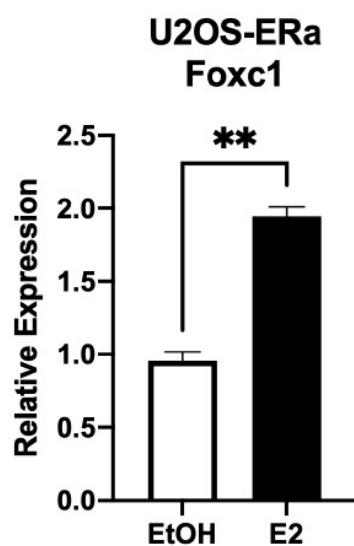
Supplemental Figure S1:



**Figure S1:** Whole immunoblots from Figures 2 and 4.



**Supplemental Figure S2:** (A) Immunoreactivity scoring of IHC in Figure 2D. (B) Immunoreactivity scoring of IHC in Figure 2E. (C) Immunoreactivity scoring of IHC in Figure 3.



**Supplemental Figure S3: *Foxc1* regulation by E2 in human cells.** U2OS-ER $\alpha$  cells were treated with vehicle control (Ethanol, EtOH) or 10 nM E2 for 24 hours. RNA was obtained and qPCR was performed for *FOXCI* and normalized to *ACTB*.

**Supplemental Table S1.**

Primers used for ChIP	Sequence	Species
Runx2 prom 1	CCCCCAAAGTGGGGAGTGGC	mouse
	TGCTTGCTGGGAAAGGGGA	
Runx2 prom 2	ACCTTCTGAATGCCAGGAAGGCCT	mouse
	TGGGACTGCCTACCACTGTGG	
Runx2 enh	TCCTGGACCAGAGCCACGTT	mouse
	GCAACTCCCTGGATGCCCTGG	
NC	GTGGCTGCTCTTCGCTGCCA	mouse
	TGCTGCCACCTGGCCTTTGG	
Foxc1 A	ACTGCTGCGAAAGGTCTAGG	mouse
	GAGCAACAGACCACGCAATC	
Foxc1 B	AAGCCCCTAGCTGGTTTCAT	mouse
	GGAGTGGGGTGTCTGTCACT	
Foxc1 C	TCGCAAGCTGGTCGTAATTC	mouse
	CATACCTAGCCCAGCCTTTGT	
Foxc1 D	TCATTACAGGCGTCTCTCG	mouse
	TTTTGAGCATCCGTACCCCA	
Foxc1 E	GTGGCATAAACCCCGAGGAA	mouse
	GAGGCCTCTGAAGCCGATAC	
Foxc1 F	CACCGTCAAACCTCAAGCAGC	mouse
	TACATGAGGGGCTCTGGGAA	
Primers for cDNA	Sequence	Species
Actin (Actb)	TGGGACTGCCTACCACTGTGG	mouse
	TCCTGGACCAGAGCCACGTT	
Foxc1		mouse
Actin (ACTB)	TCCTGGACCAGAGCCACGTT	human
FOXC1	GTGGCTGCTCTTCGCTGCCA	human
	TGCTGCCACCTGGCCTTTGG	