

Supportive/Supplementary Material

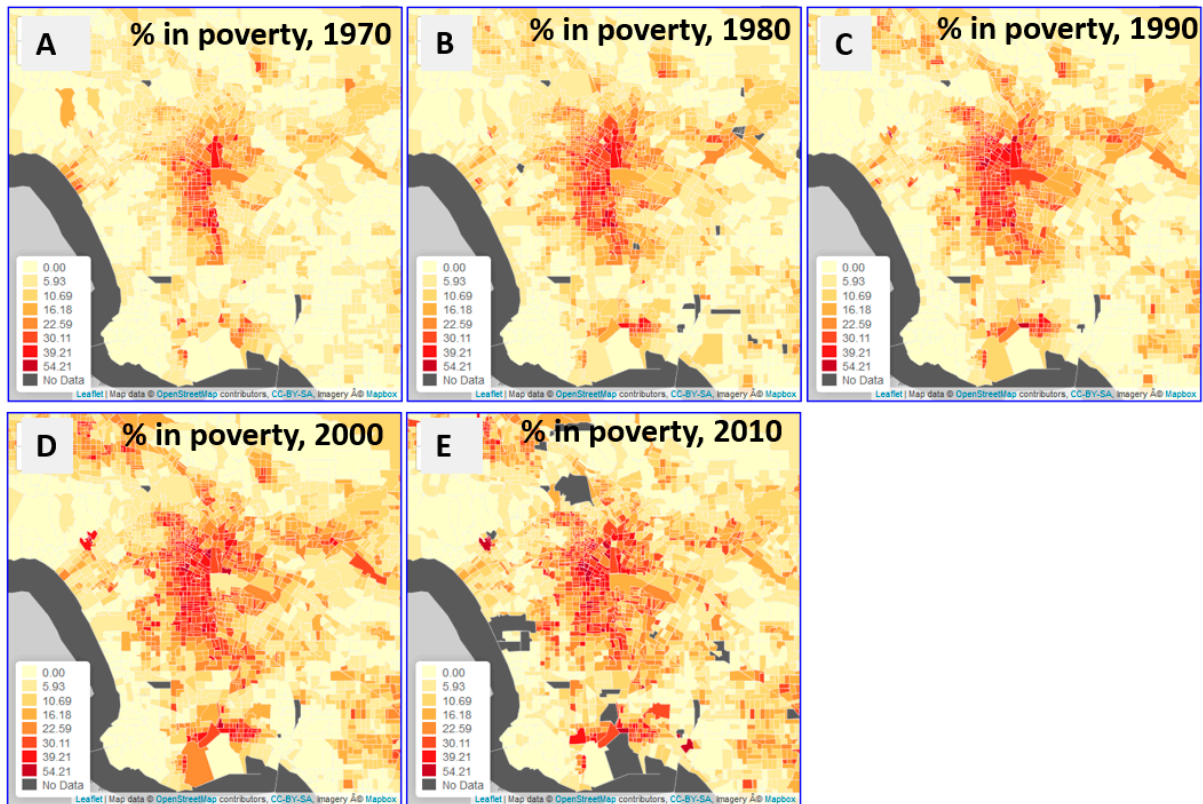


Figure S1. Percentage of people in poverty in 1970, 1980, 1990, 2000 and 2010. The same class intervals over 5 maps allow us to see areas that have experienced the increase of the percentage of people in poverty across time.

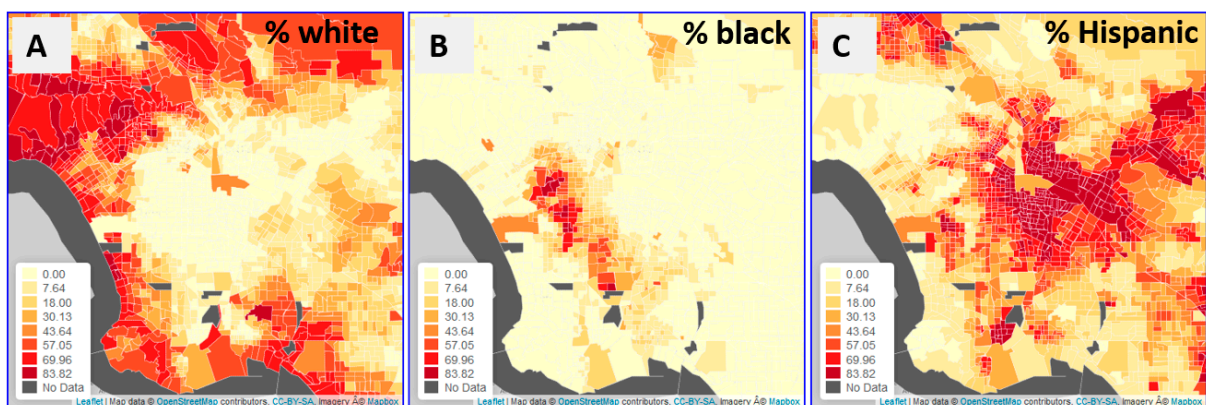


Figure S2. The fair comparison of the distribution of the percentage of white (1), the percentage of black (2) and the percentage of Hispanic (3). Users need to have the same classification intervals over 3 different maps to have the fair comparison. The data are from LTDB.

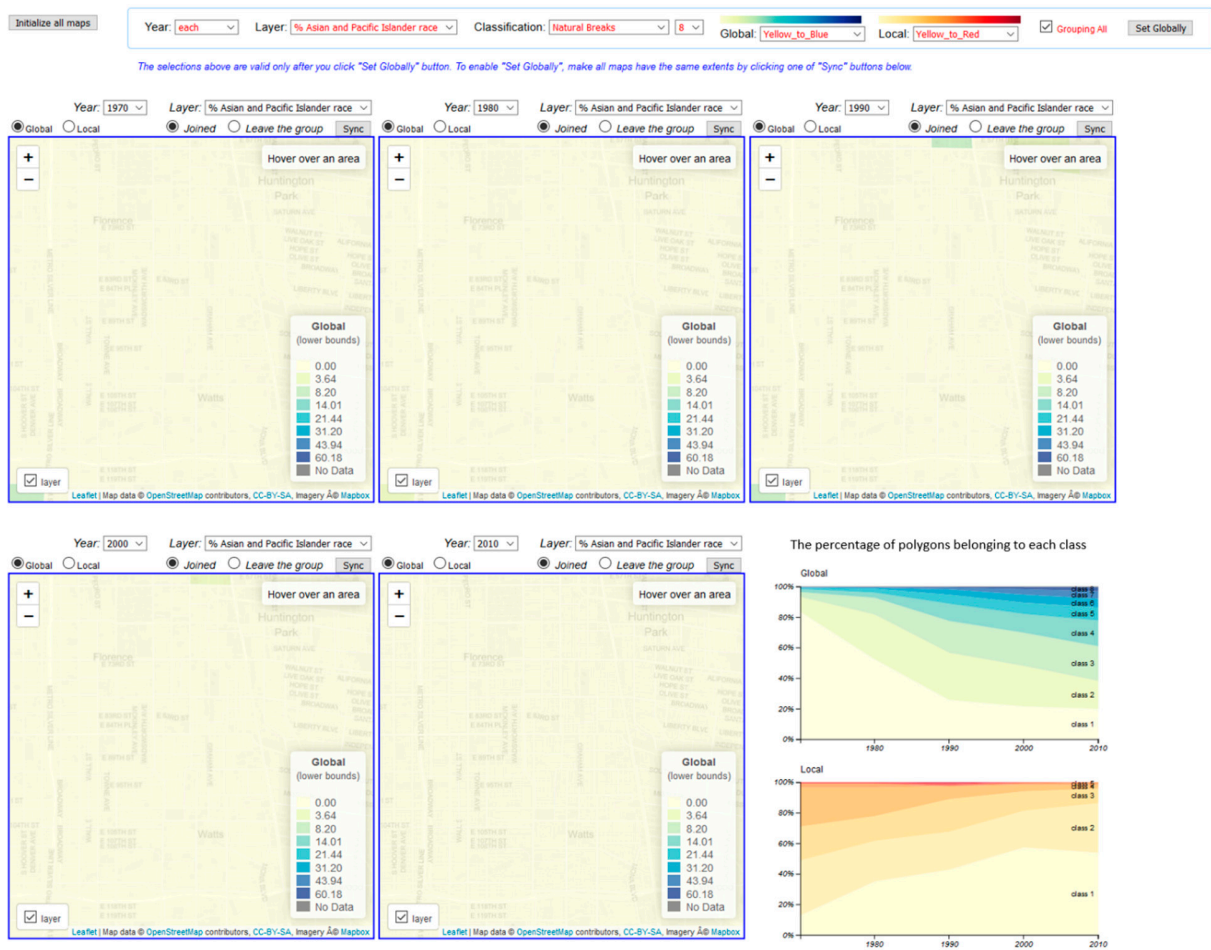


Figure 3S. The percentage of Asians and Pacific Islanders in a zoom-in area with global classification. The “Global” radio button is clicked at the top-right corner of each map. The maps above show the same area with the maps in Fig 7 and 8, but the natural break classification method was chosen in this case.

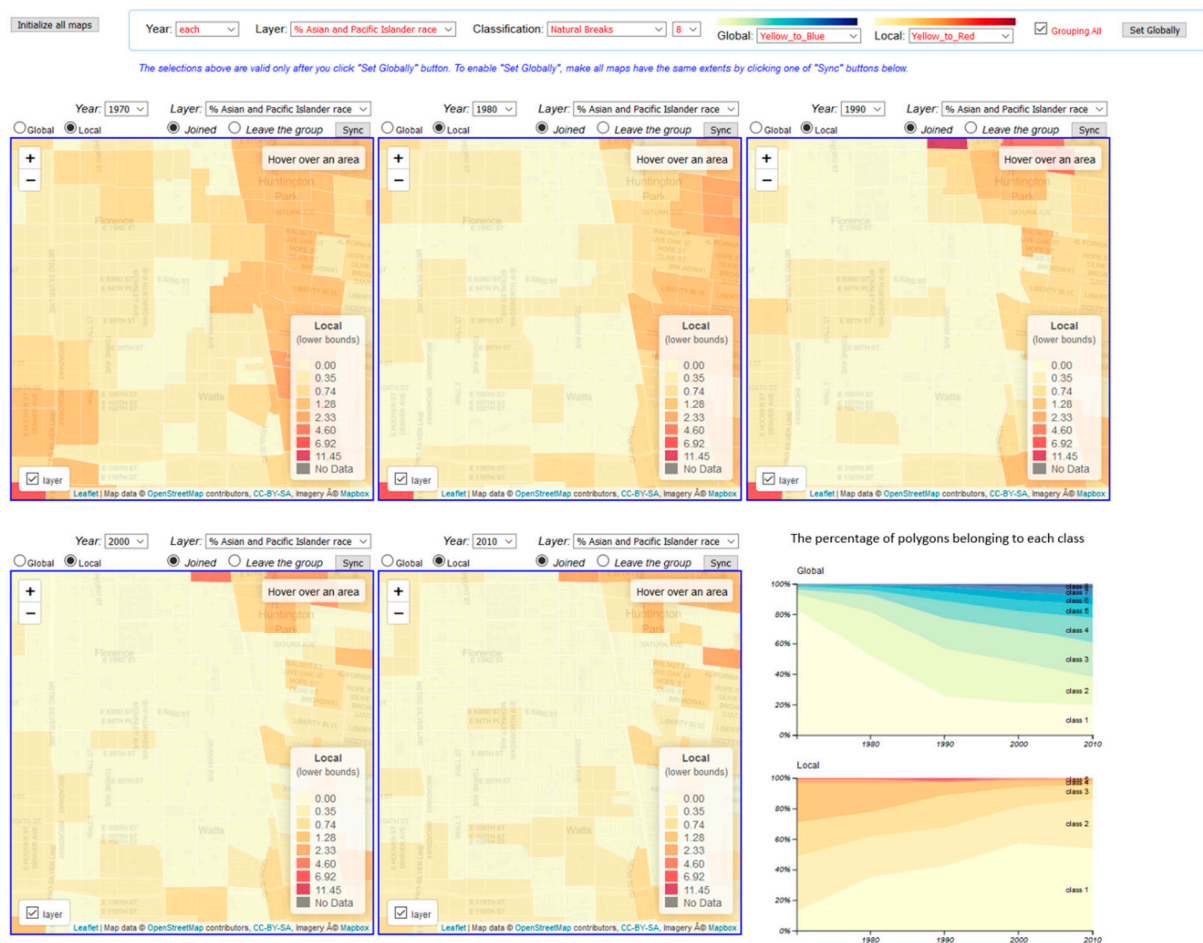


Figure 4S. The percentage of Asians and Pacific Islanders in a zoom-in area with local classification. The “Local” radio button is clicked at the top-right corner of each map. The maps above show the same area with the maps in Fig 7 and 8, but the natural classification method was chosen in this case.