

Land Surface Temperature (LST)

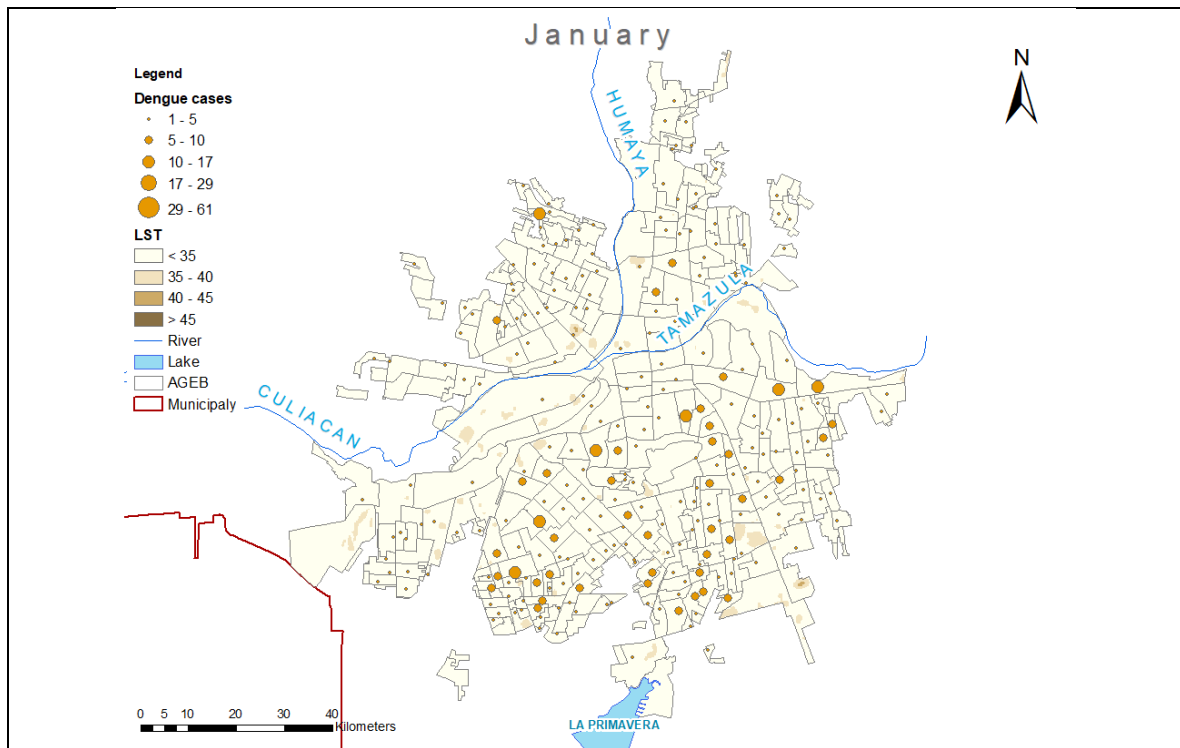


Figure S1. January LST and dengue cases, Culiacán, Mexico.

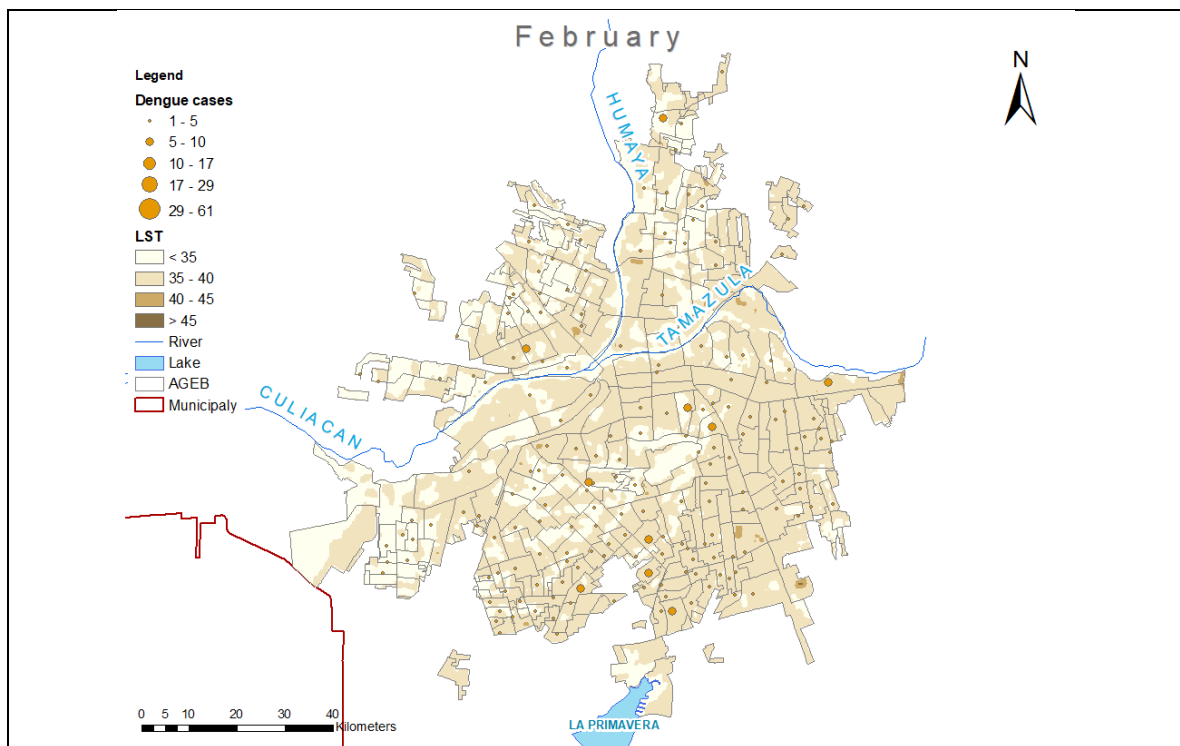


Figure S2. February LST and dengue cases, Culiacán, Mexico.

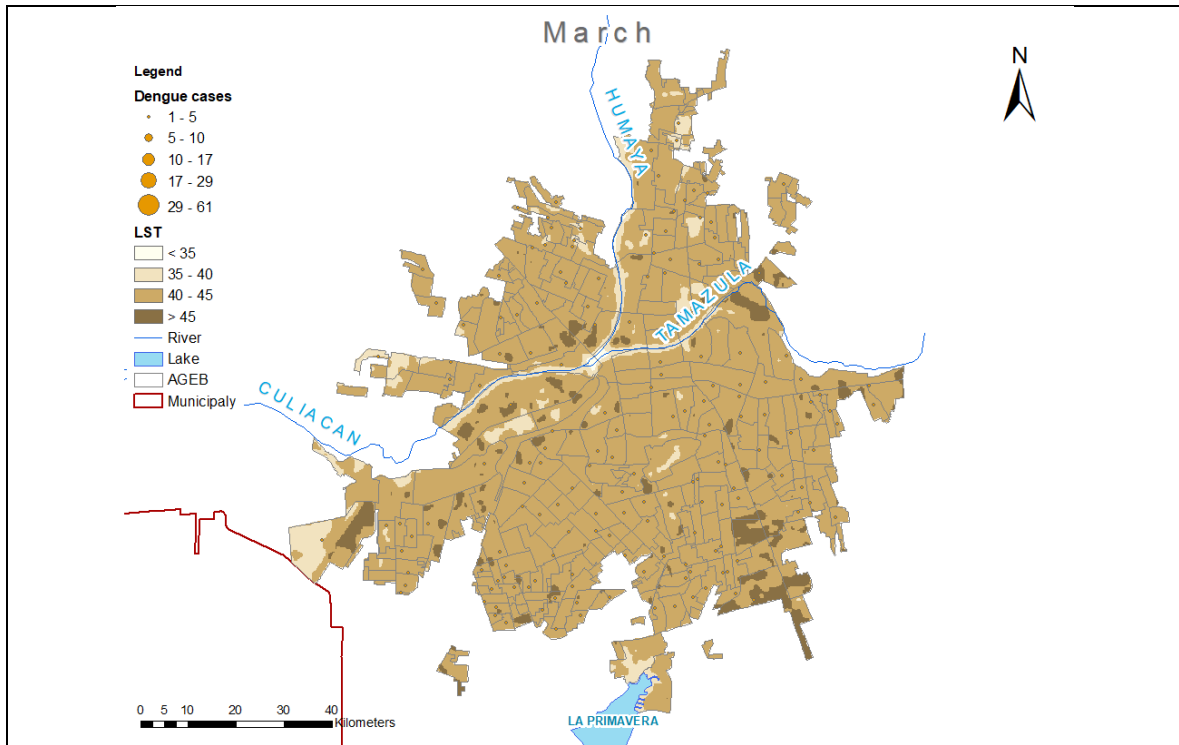


Figure S3. March LST and dengue cases, Culiacán, Mexico.

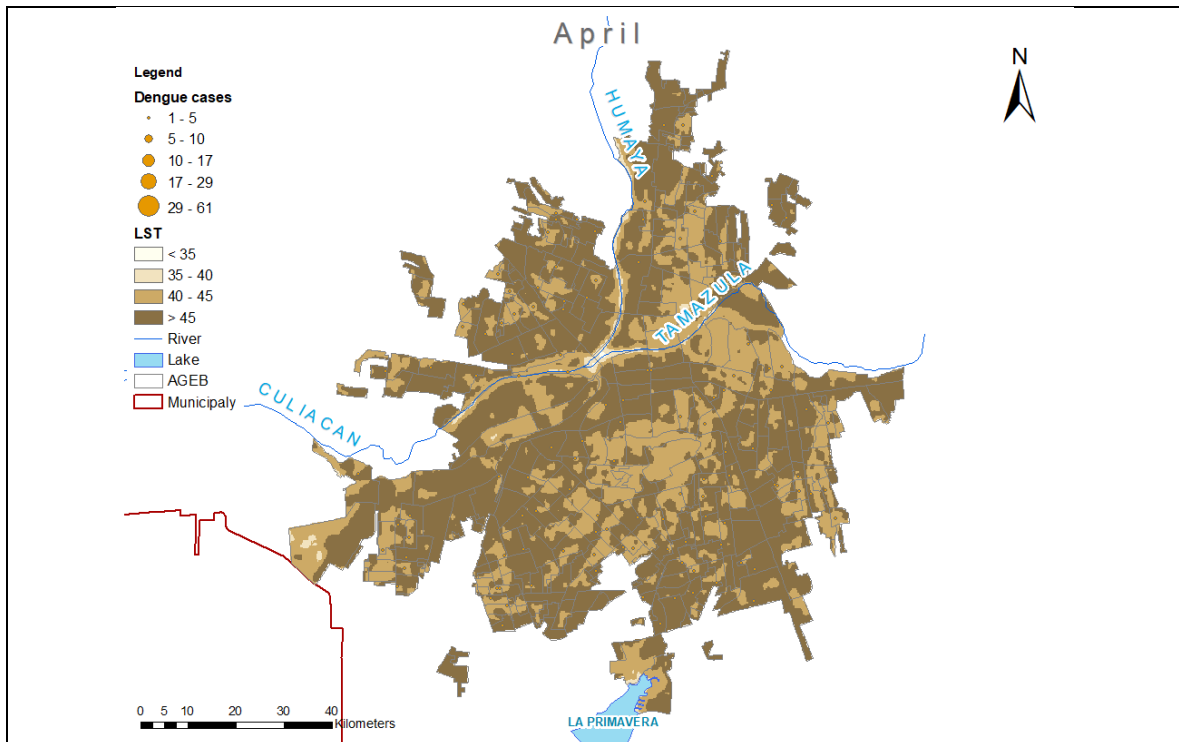


Figure S4. April LST and dengue cases, Culiacán, Mexico.

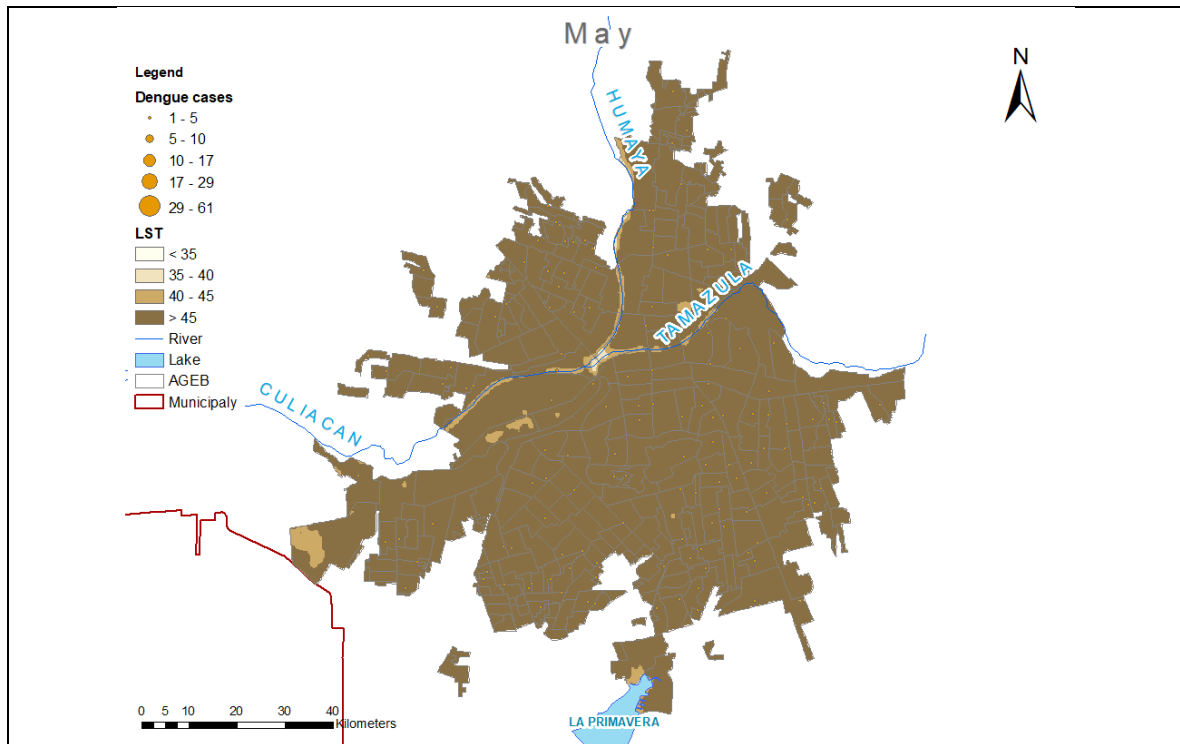


Figure S5. May LST and dengue cases, Culiacán, Mexico.

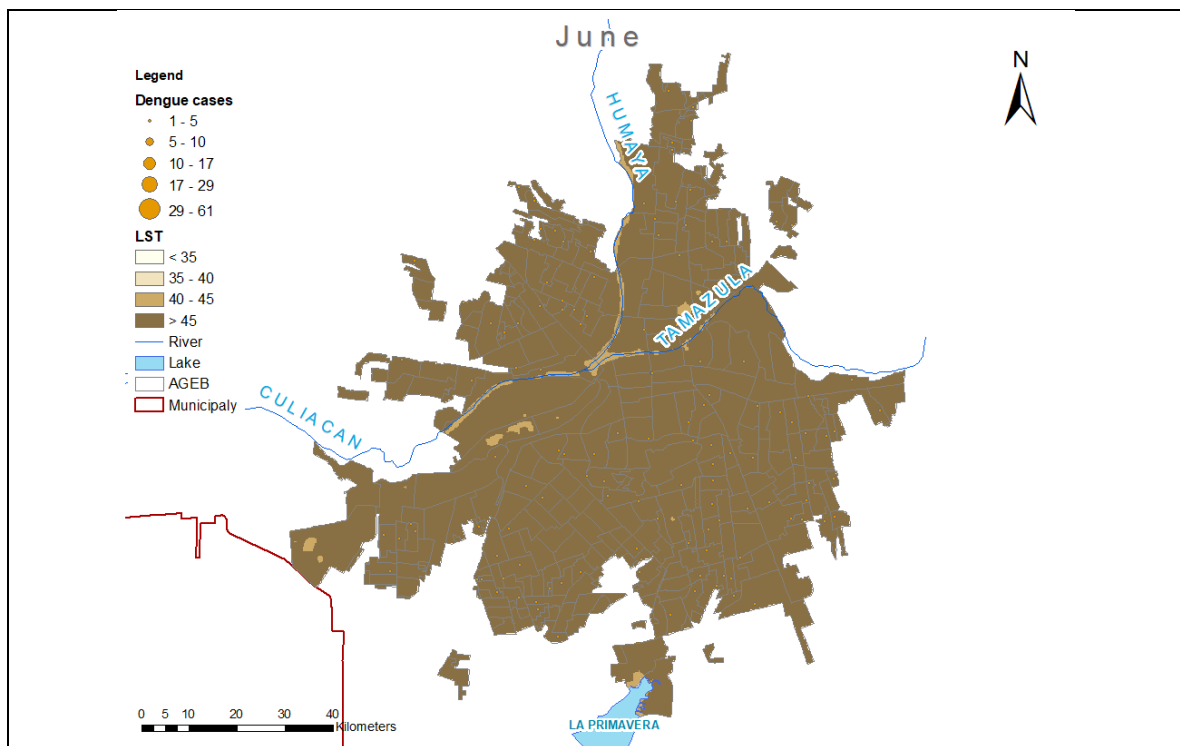


Figure S6. June LST and dengue cases, Culiacán, Mexico.

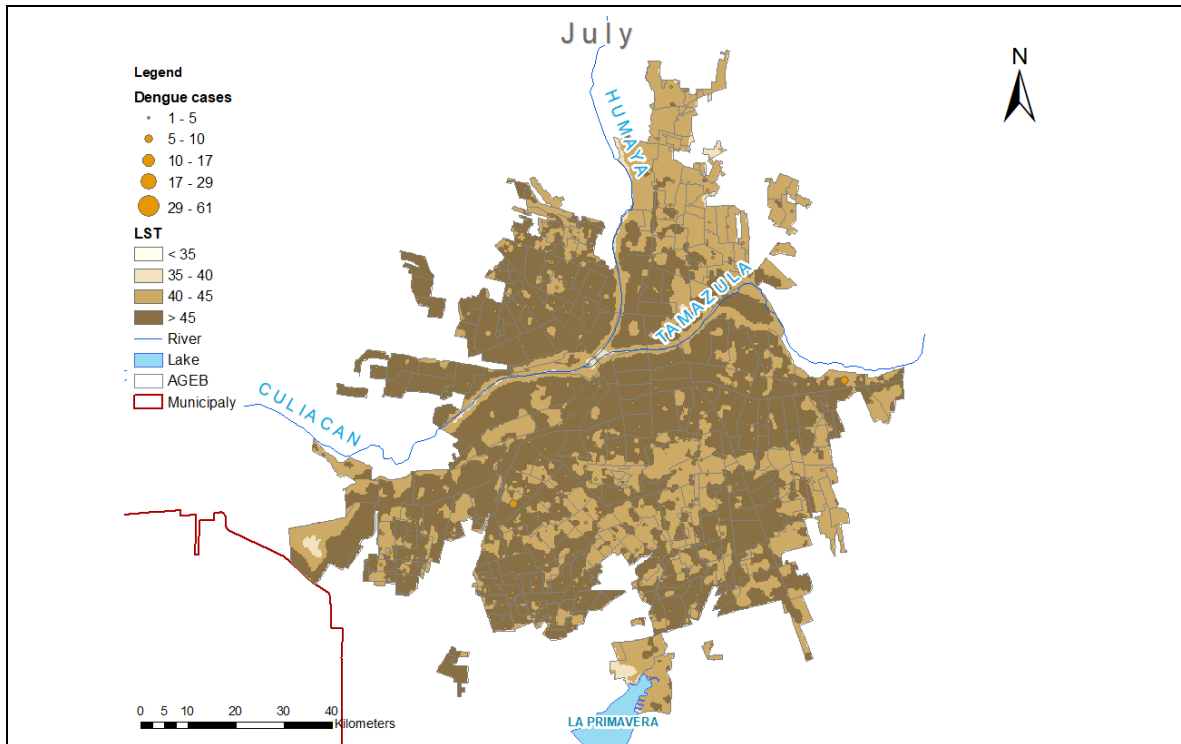


Figure S7. July LST and dengue cases, Culiacán, Mexico.

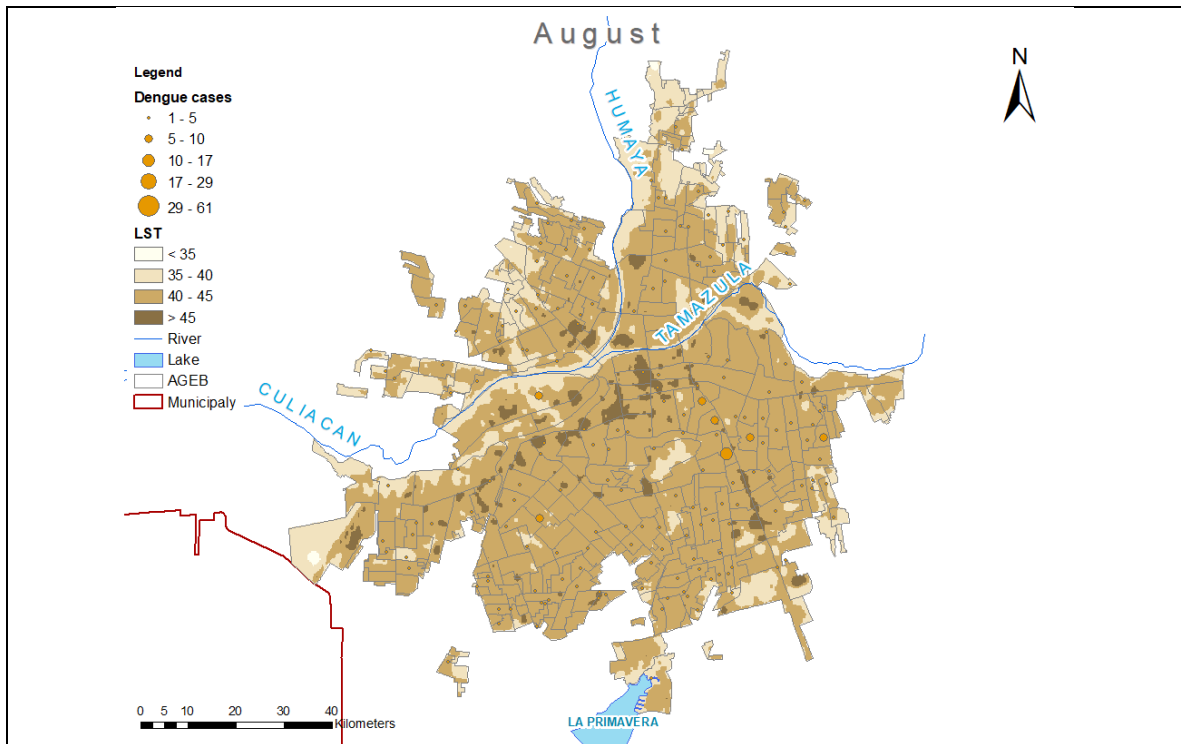


Figure S8. August LST and dengue cases, Culiacán, Mexico.

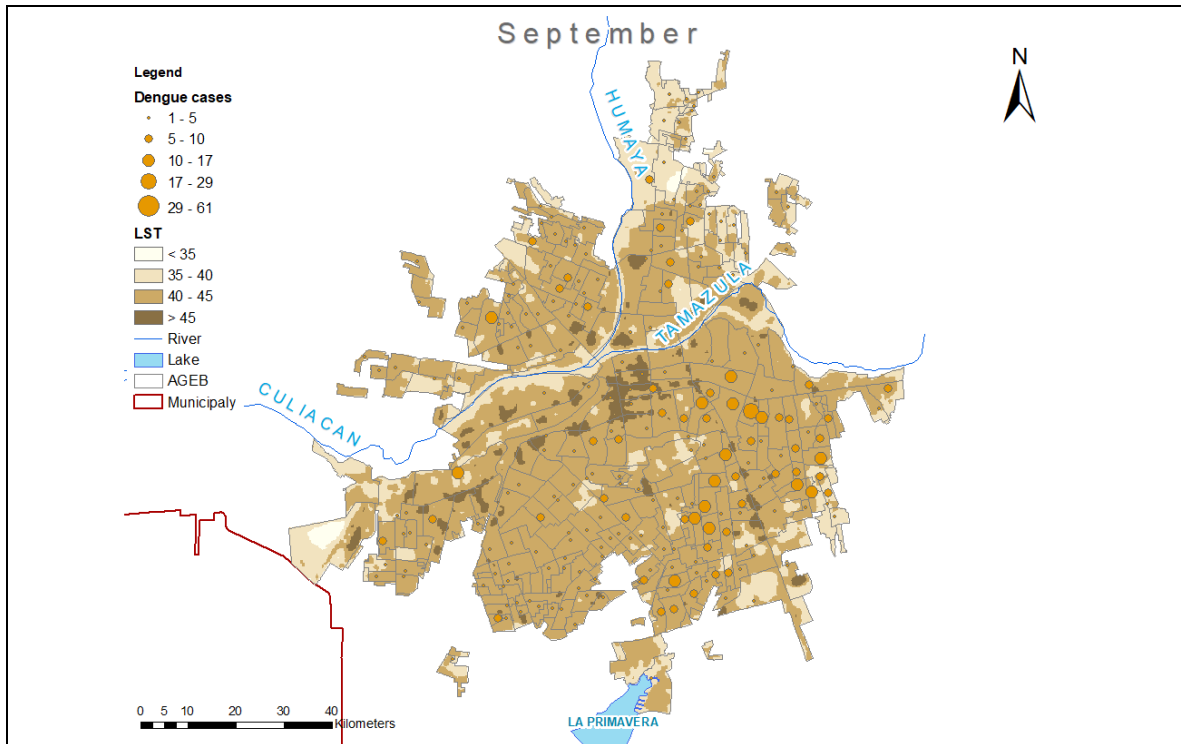


Figure S9. September LST and dengue cases, Culiacán, Mexico.

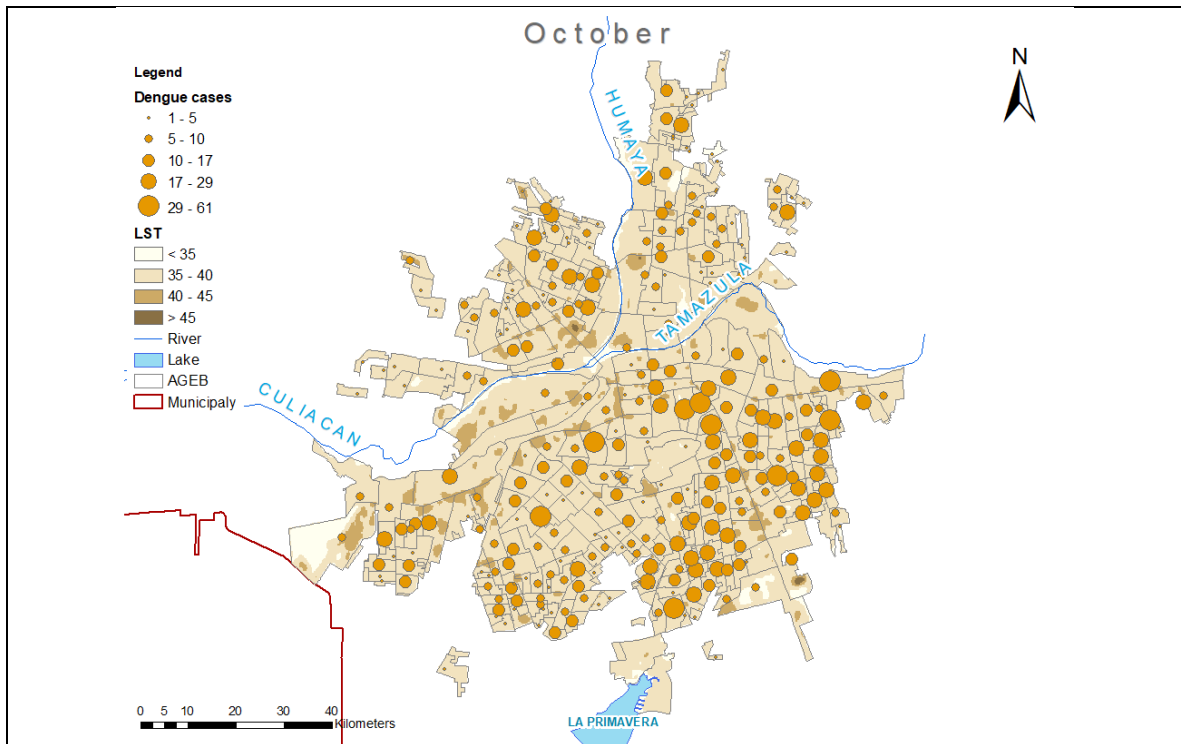


Figure S10. October LST and dengue cases, Culiacán, Mexico.

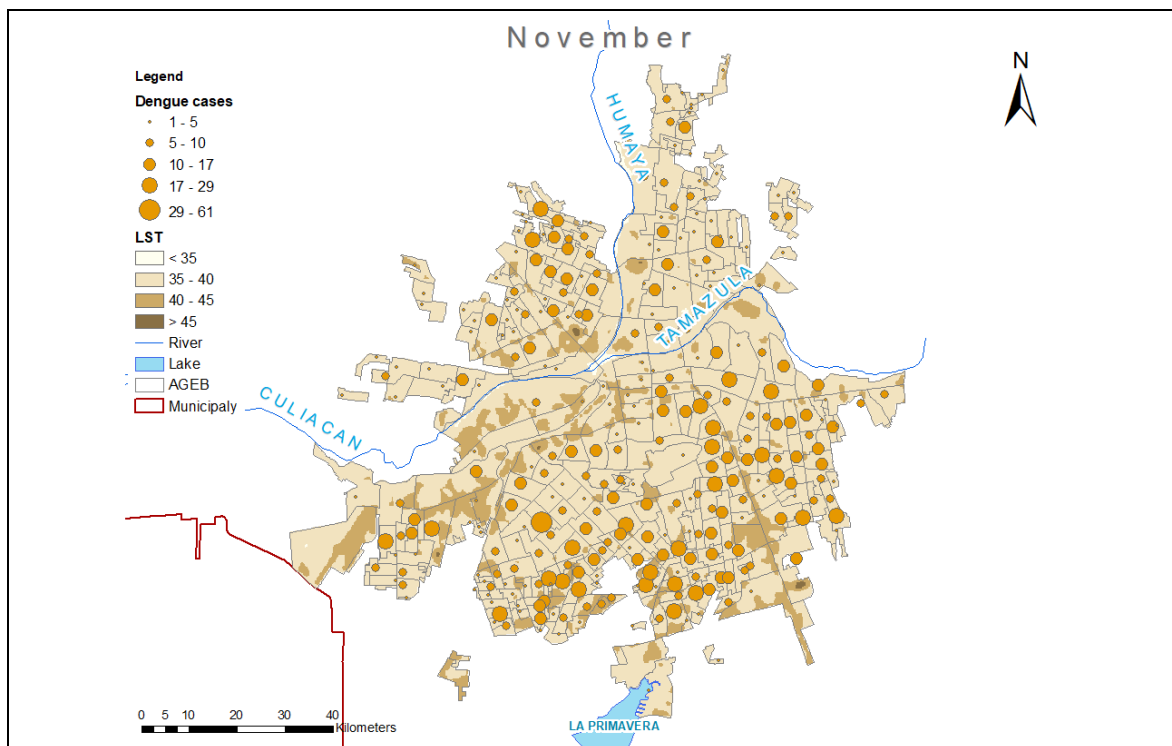


Figure S11. November LST and dengue cases, Culiacán, Mexico.

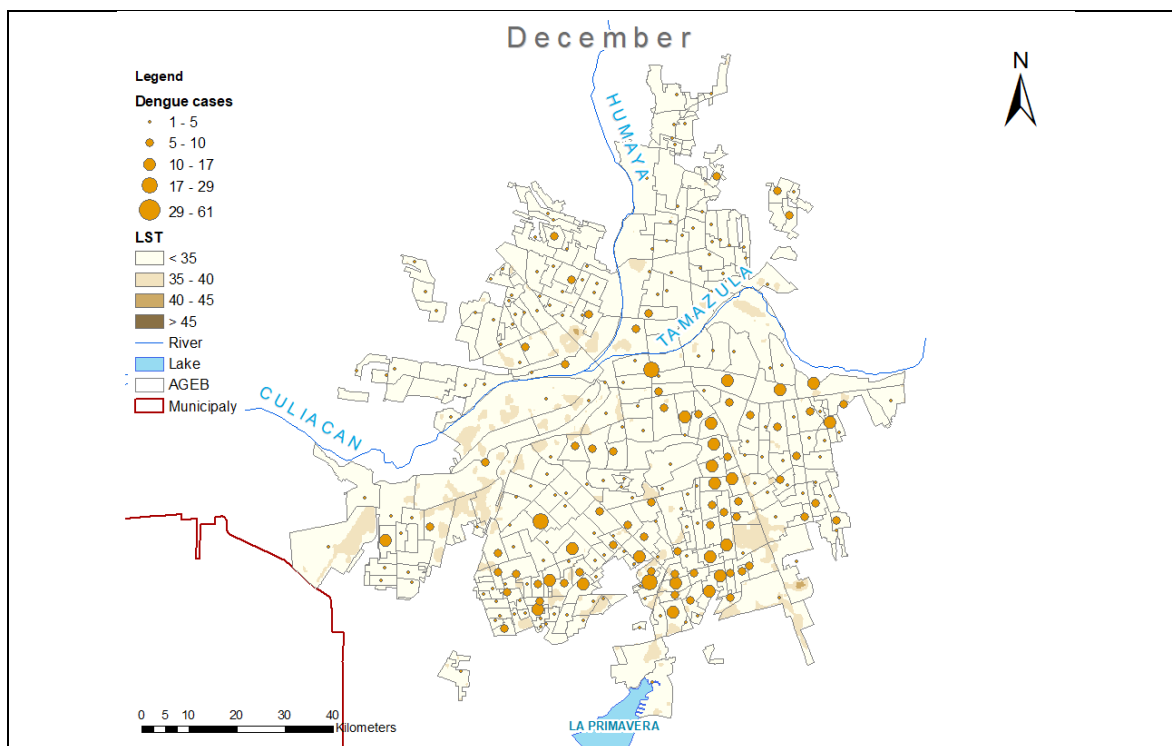


Figure S12. December LST and dengue cases, Culiacán, Mexico.

Normalized Difference Vegetation Index (NDVI)

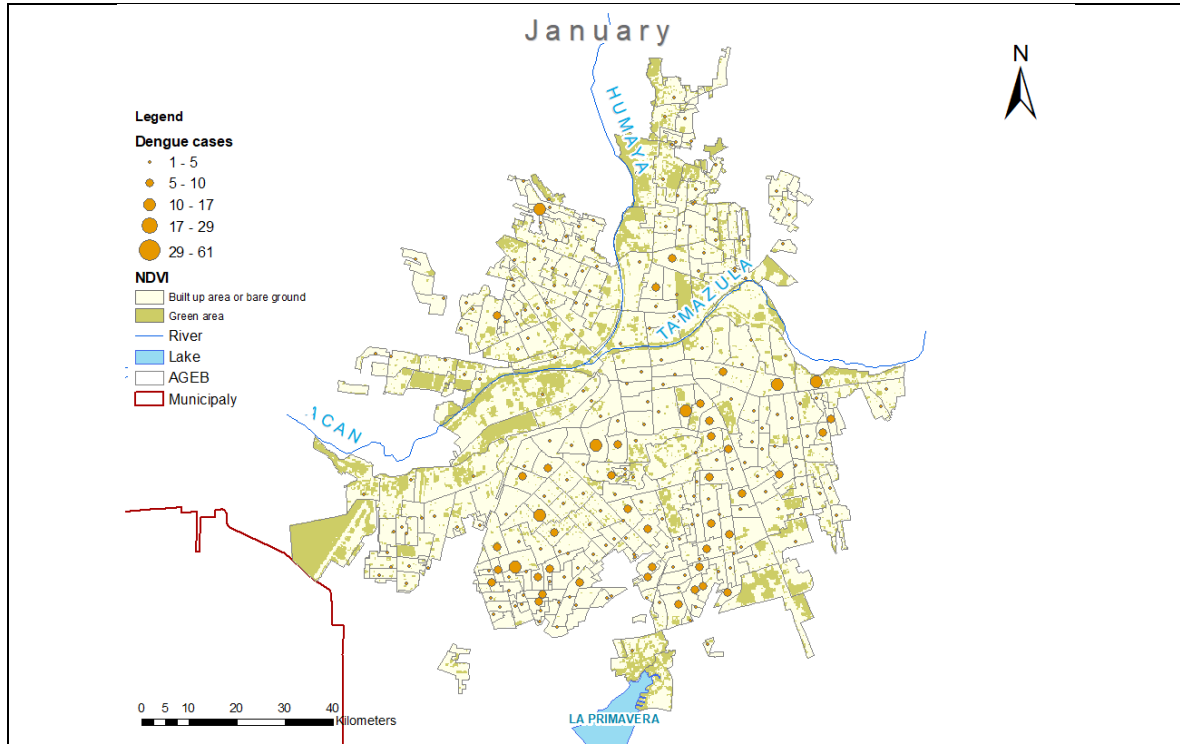


Figure S13. January NDVI and dengue cases, Culiacán, Mexico.

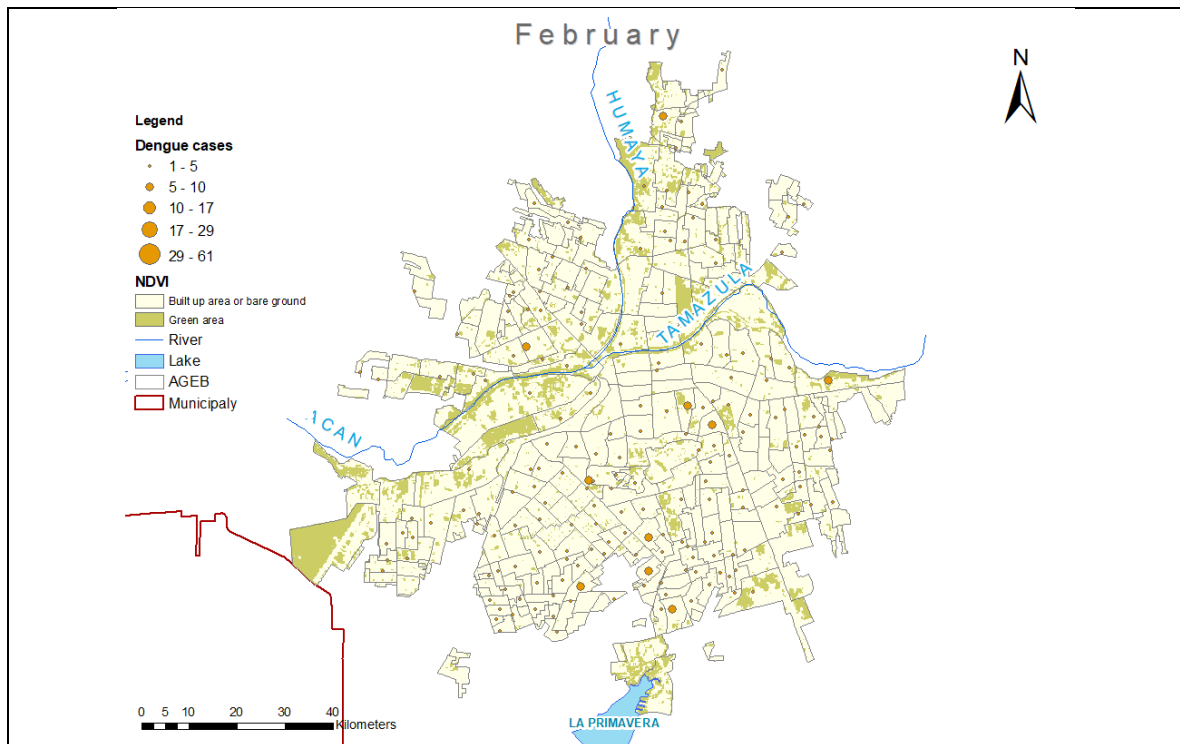


Figure S14. February NDVI and dengue cases, Culiacán, Mexico.

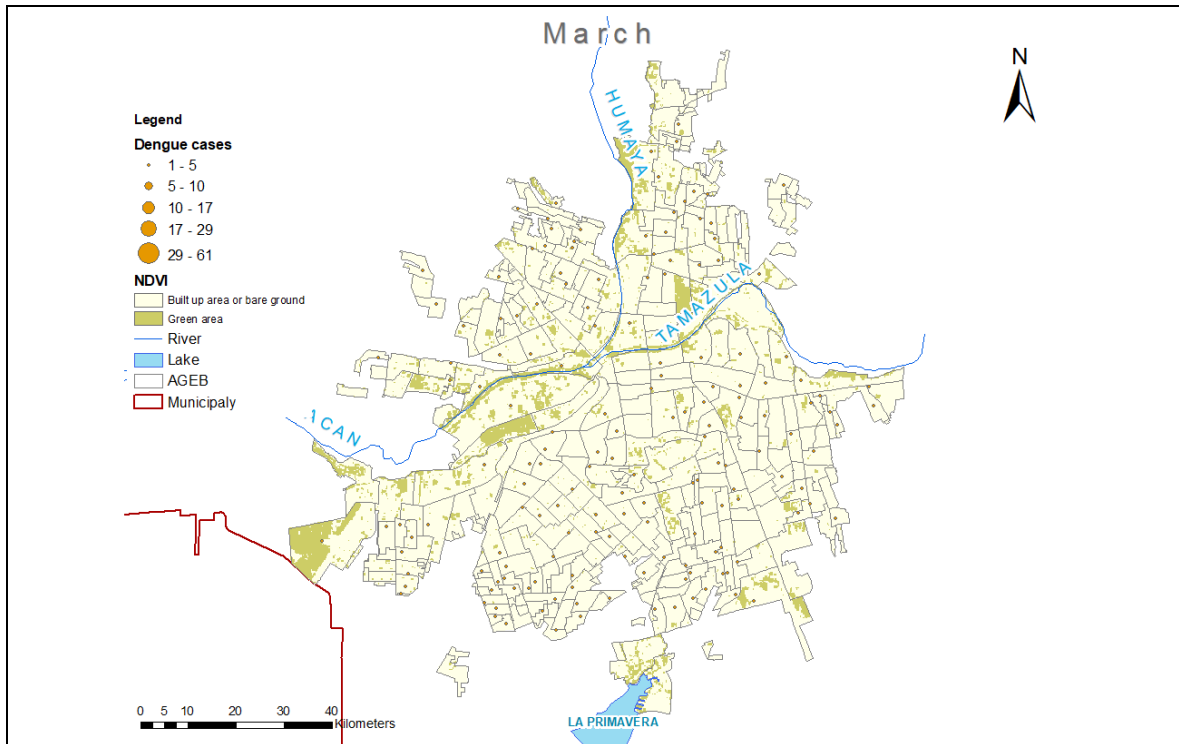


Figure S15. March NDVI and dengue cases, Culiacán, Mexico.

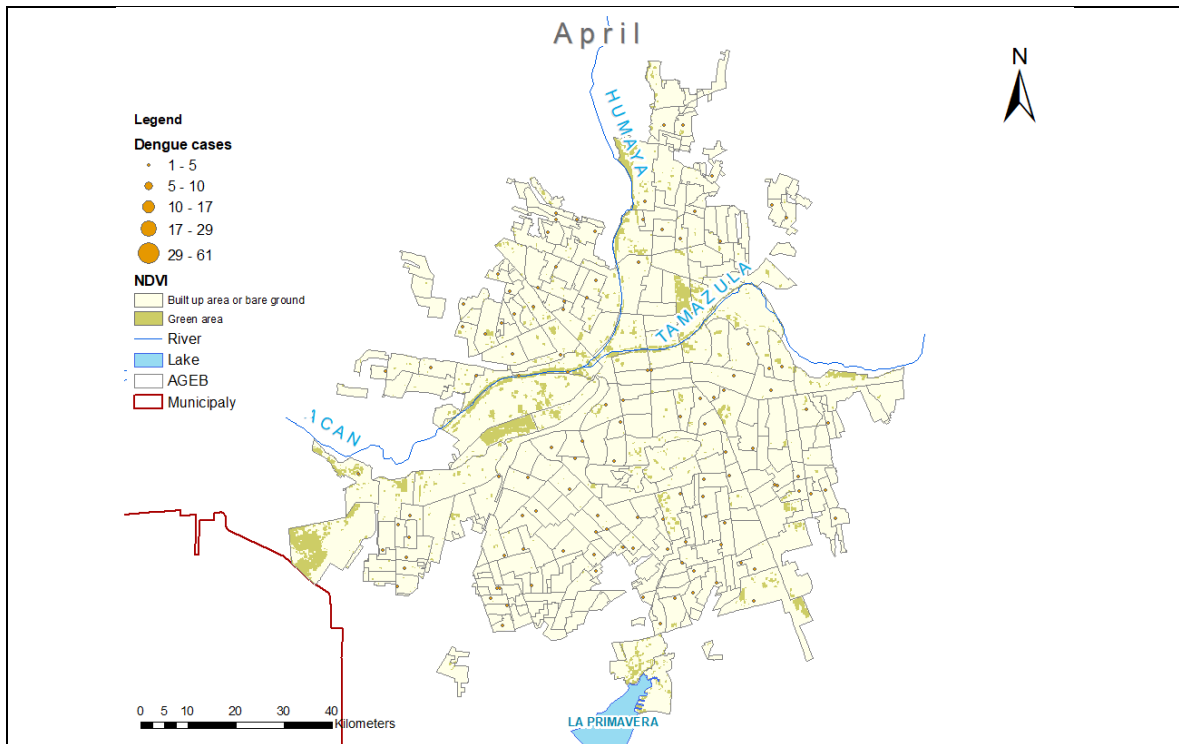


Figure S16. April NDVI and dengue cases, Culiacán, Mexico.

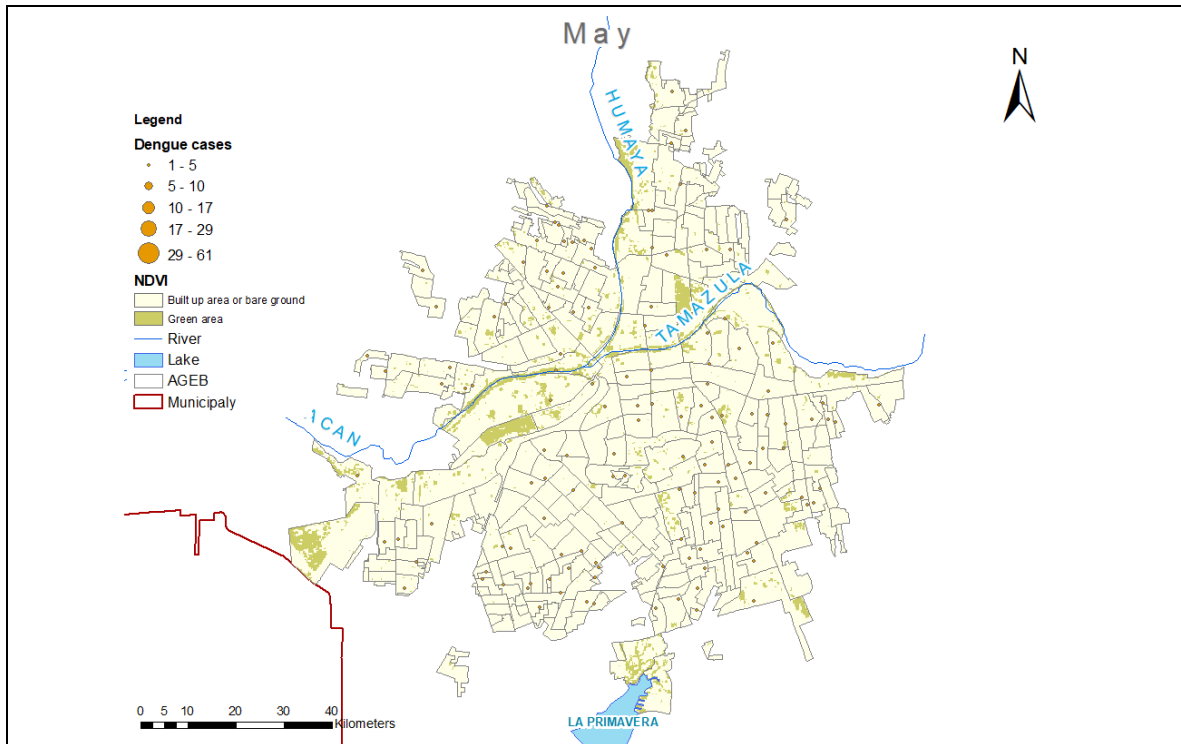


Figure S17. May NDVI and dengue cases, Culiacán, Mexico.

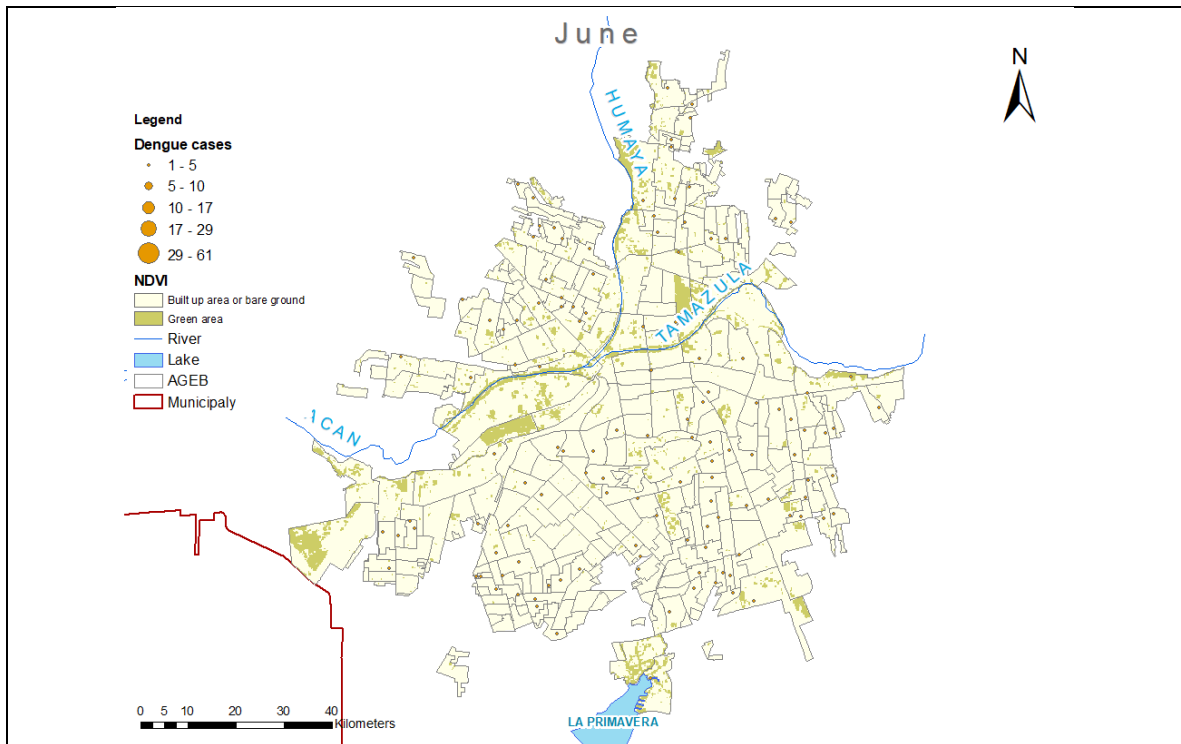


Figure S18. June NDVI and dengue cases, Culiacán, Mexico.

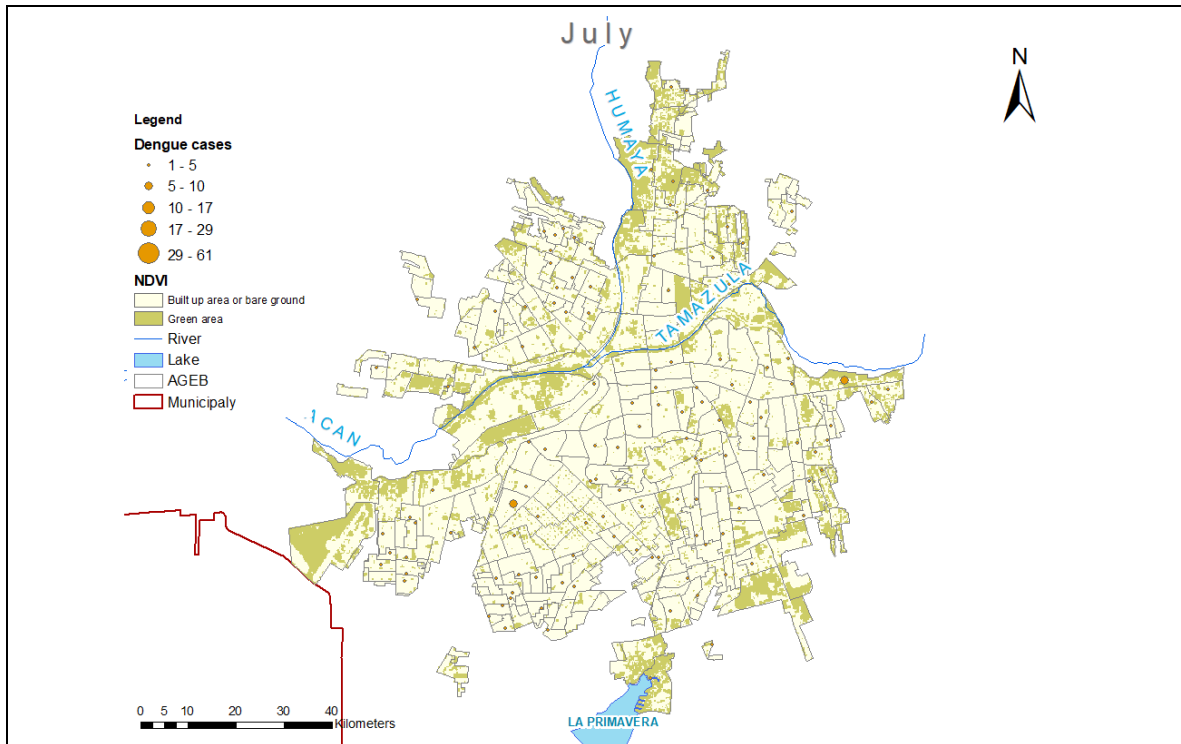


Figure S19. July NDVI and dengue cases, Culiacán, Mexico.

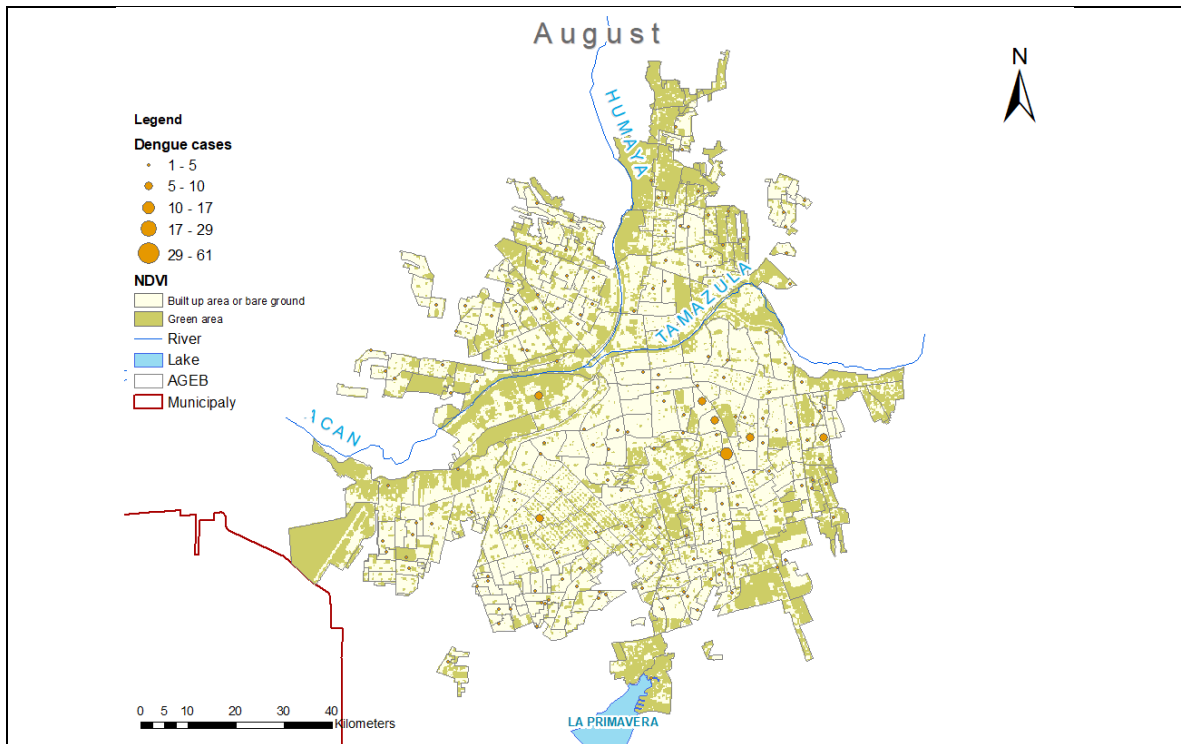


Figure S20. August NDVI and dengue cases, Culiacán, Mexico.

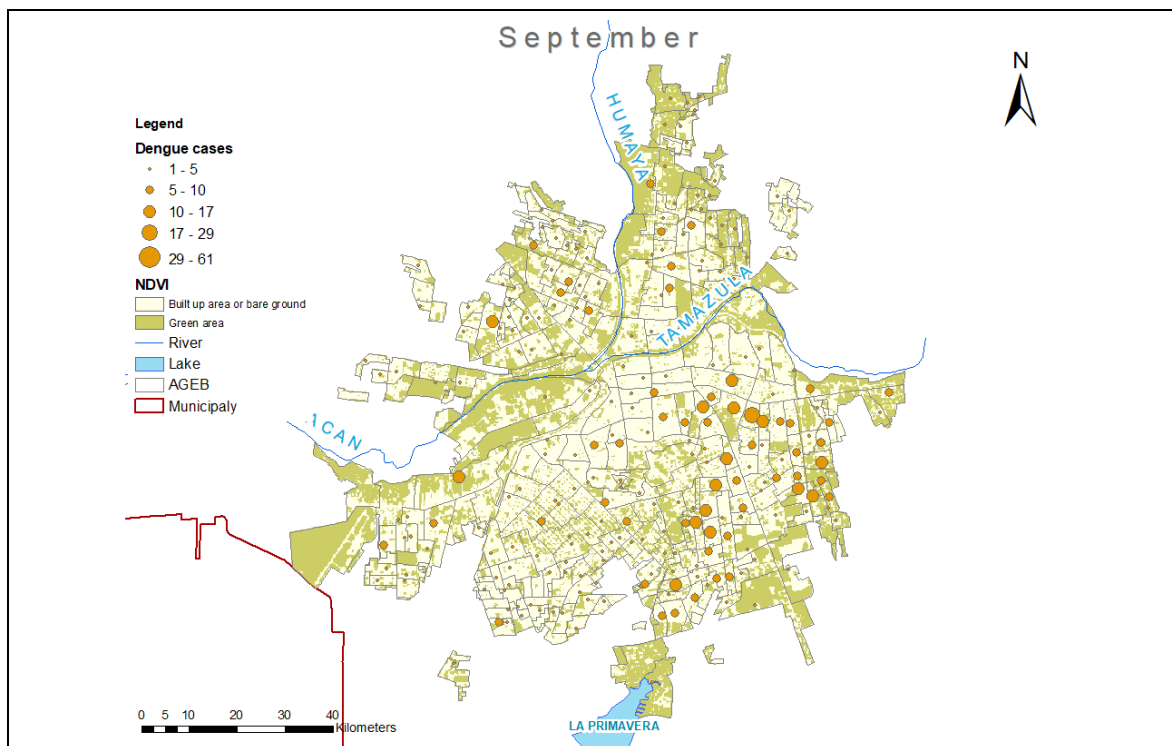


Figure S21. September NDVI and dengue cases, Culiacán, Mexico.

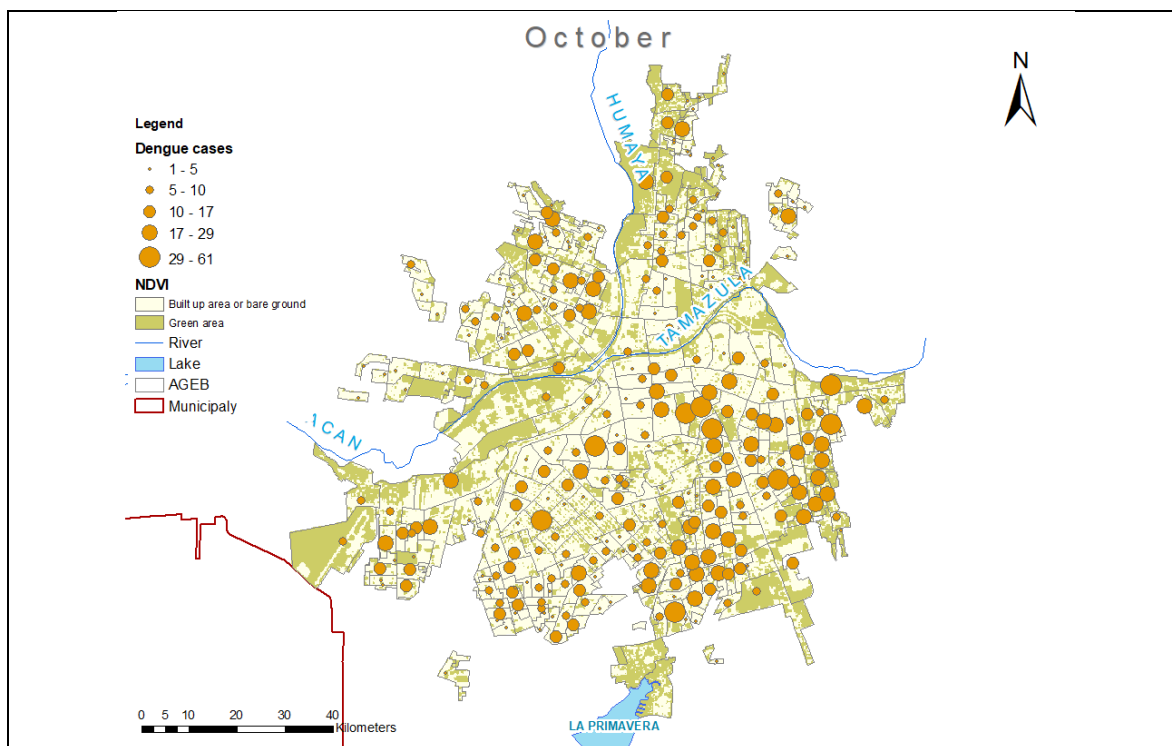


Figure S22. October NDVI and dengue cases, Culiacán, Mexico.

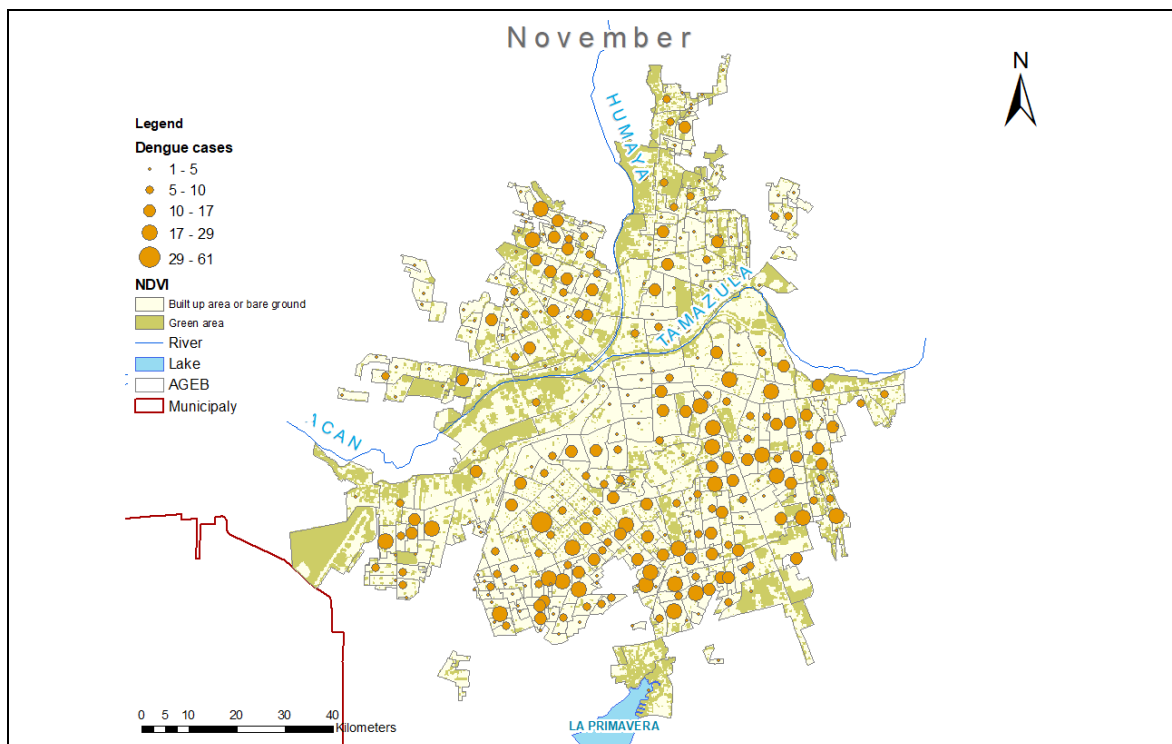


Figure S23. November NDVI and dengue cases, Culiacán, Mexico.

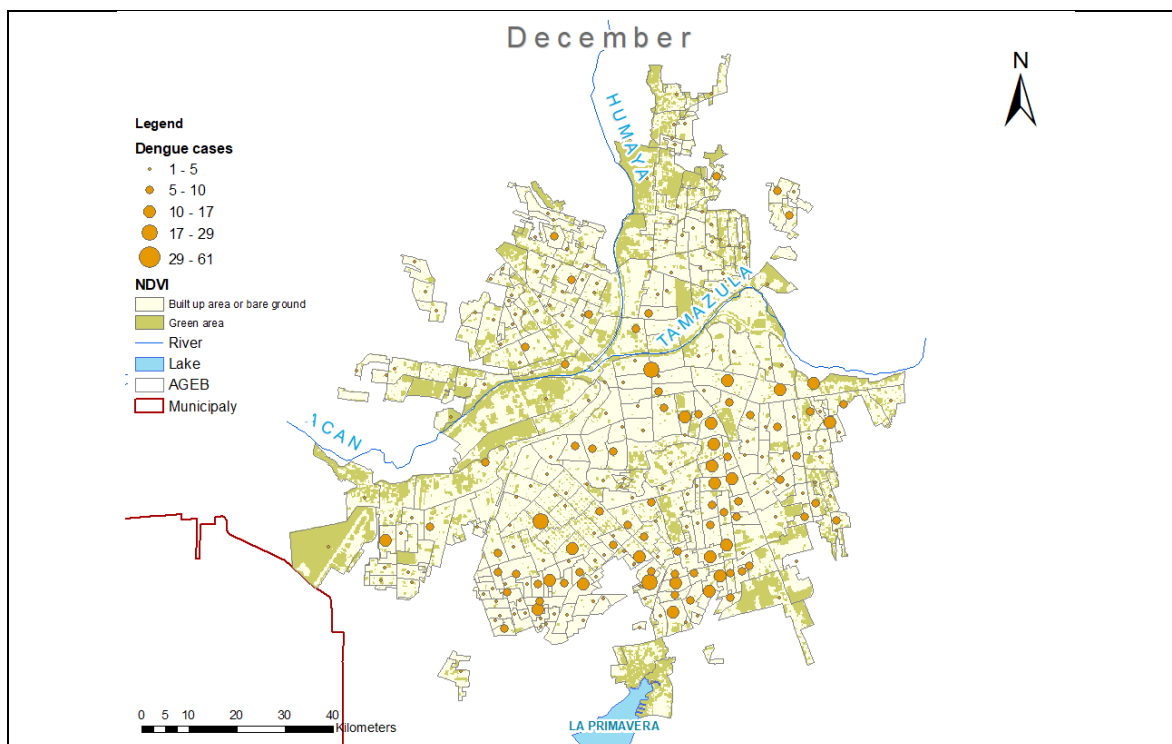


Figure S24. December NDVI and dengue cases, Culiacán, Mexico.

Normalized Difference Moisture Index (NDMI)

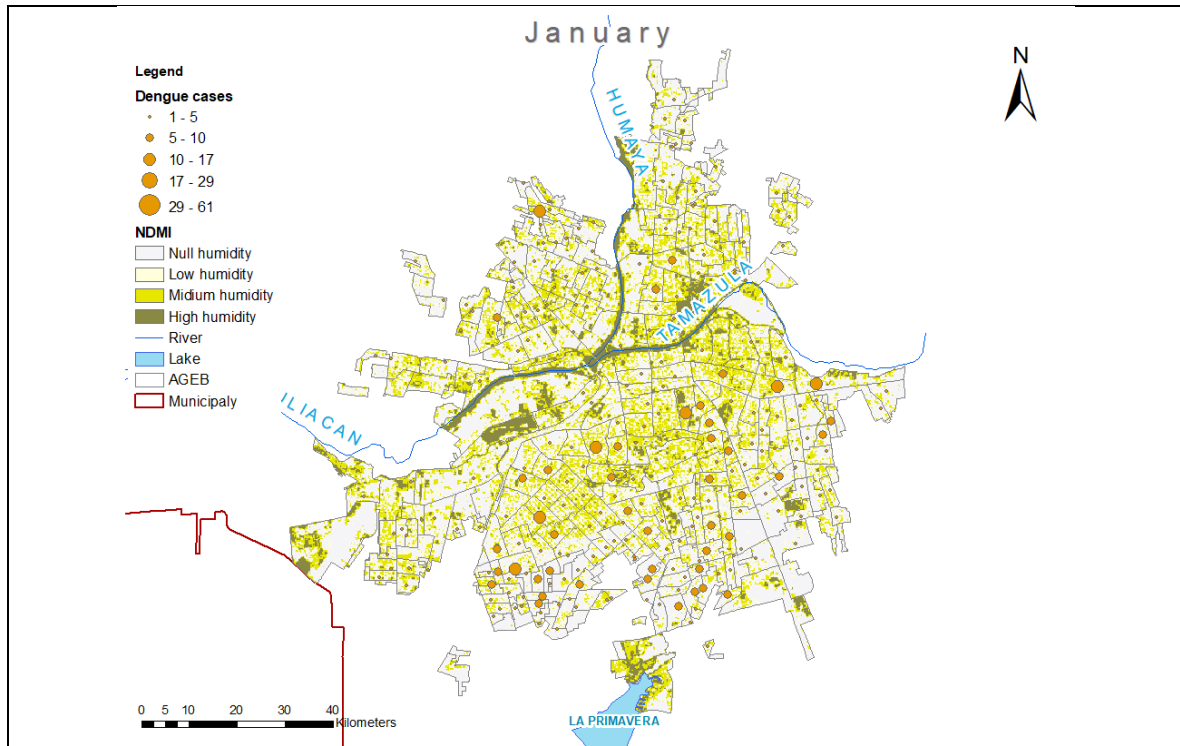


Figure S25. January NDMI and dengue cases, Culiacán, Mexico.

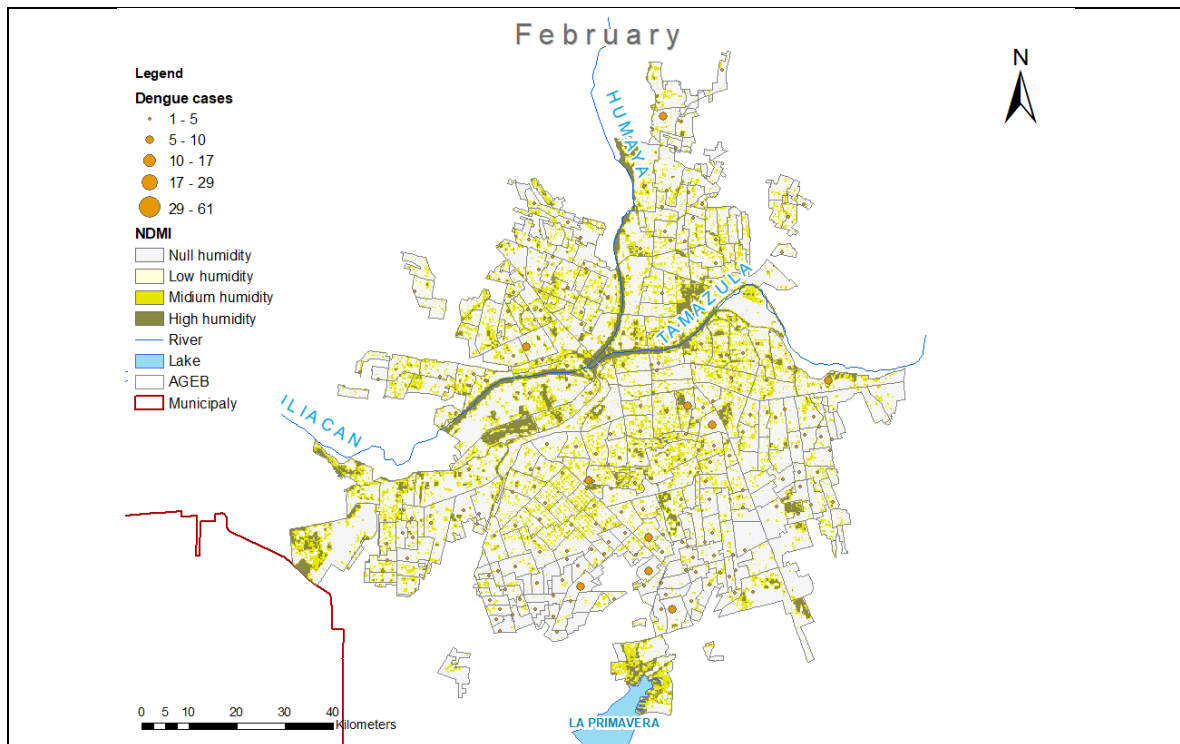


Figure S26. February NDMI and dengue cases, Culiacán, Mexico.

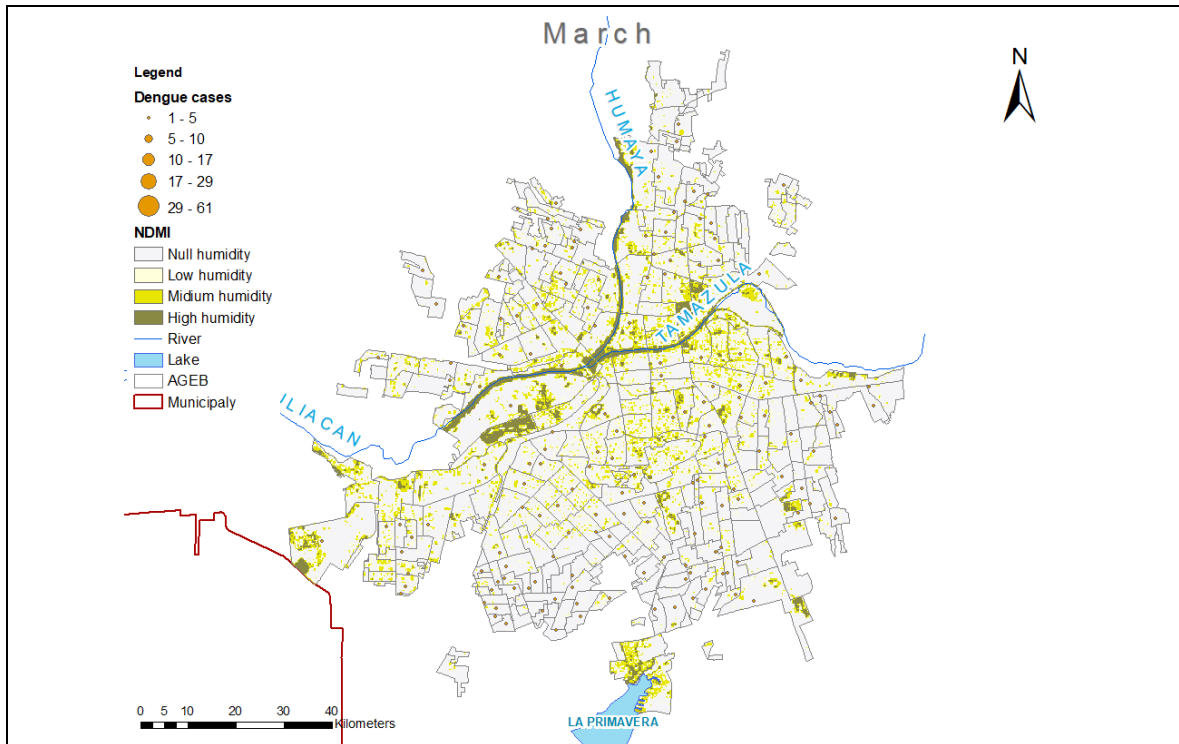


Figure S27. March NDMI and dengue cases, Culiacán, Mexico.

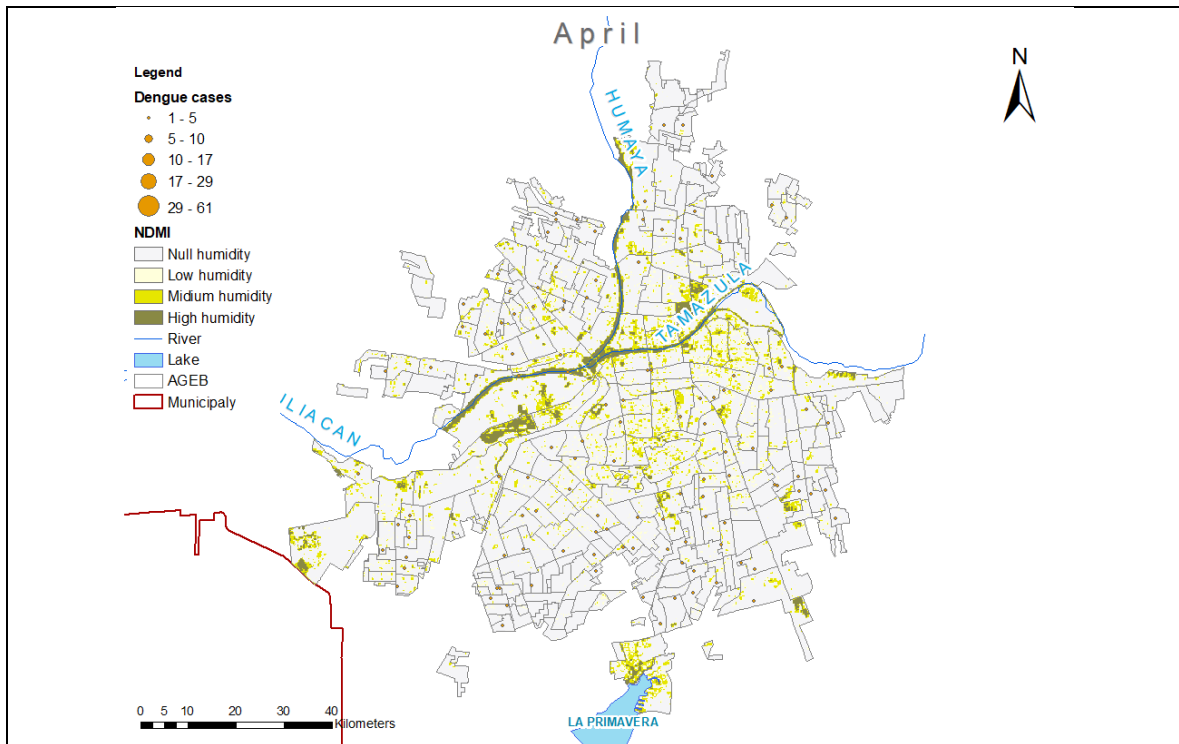


Figure S28. April NDMI and dengue cases, Culiacán, Mexico.

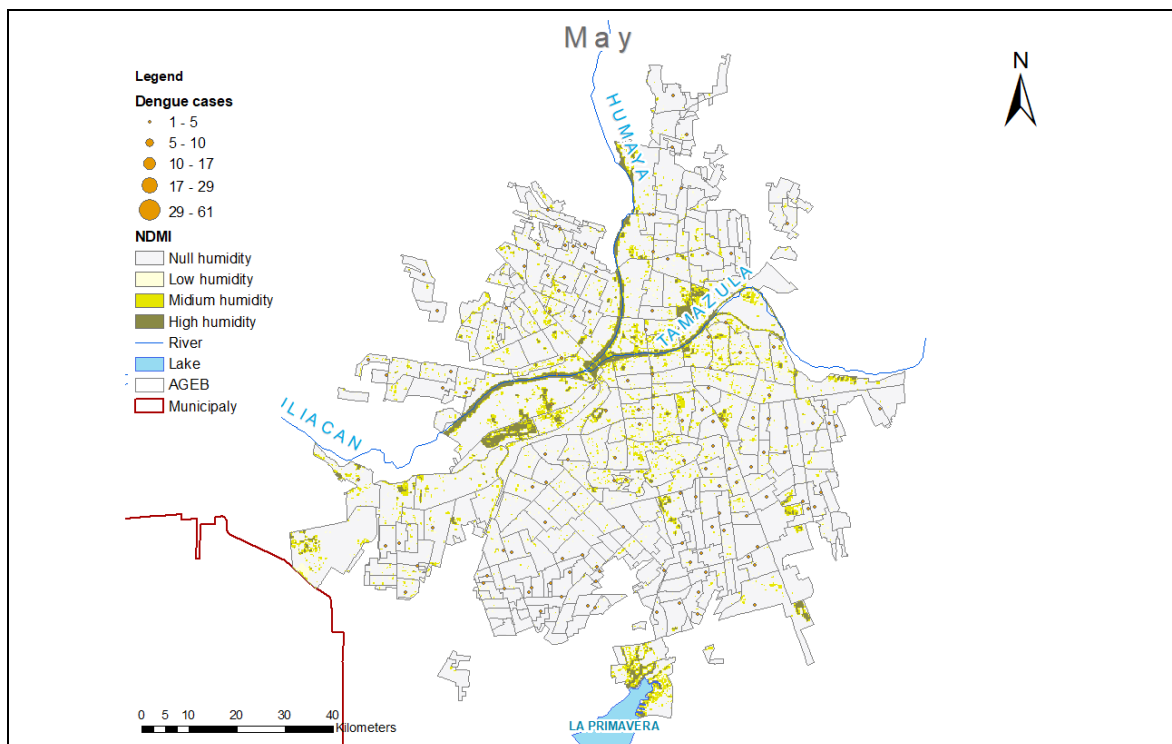


Figure S29. May NDMI and dengue cases, Culiacán, Mexico.

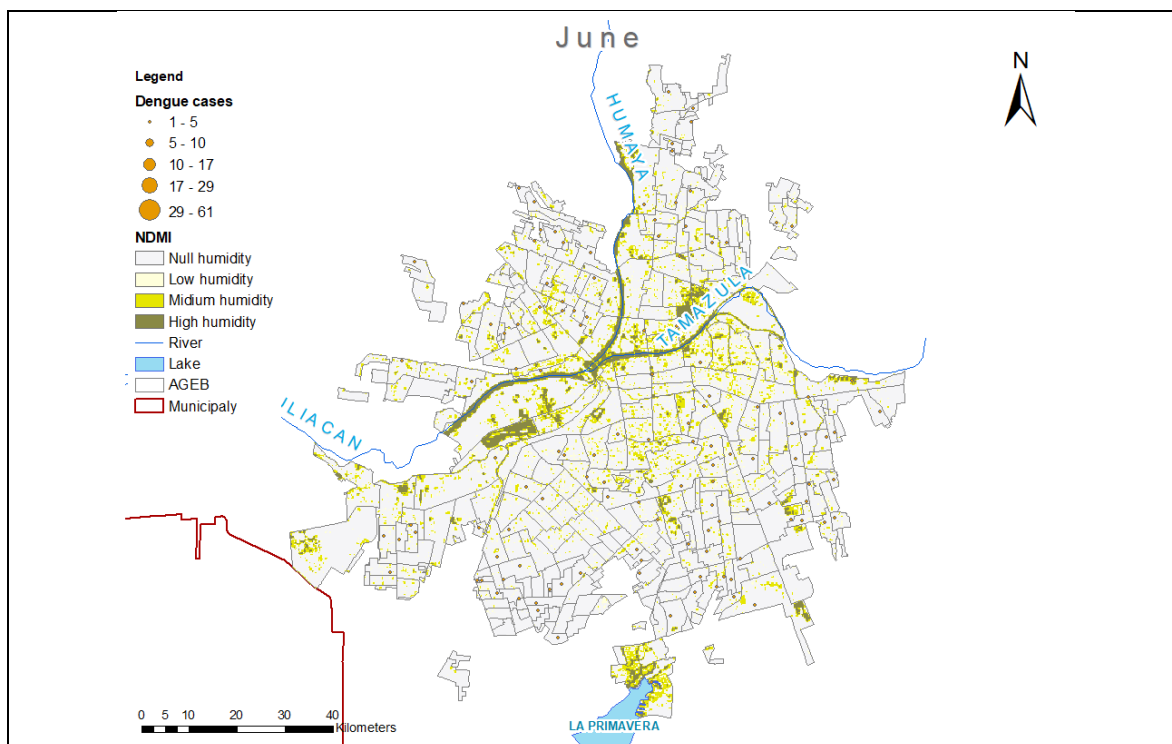


Figure S30. June NDMI and dengue cases, Culiacán, Mexico.

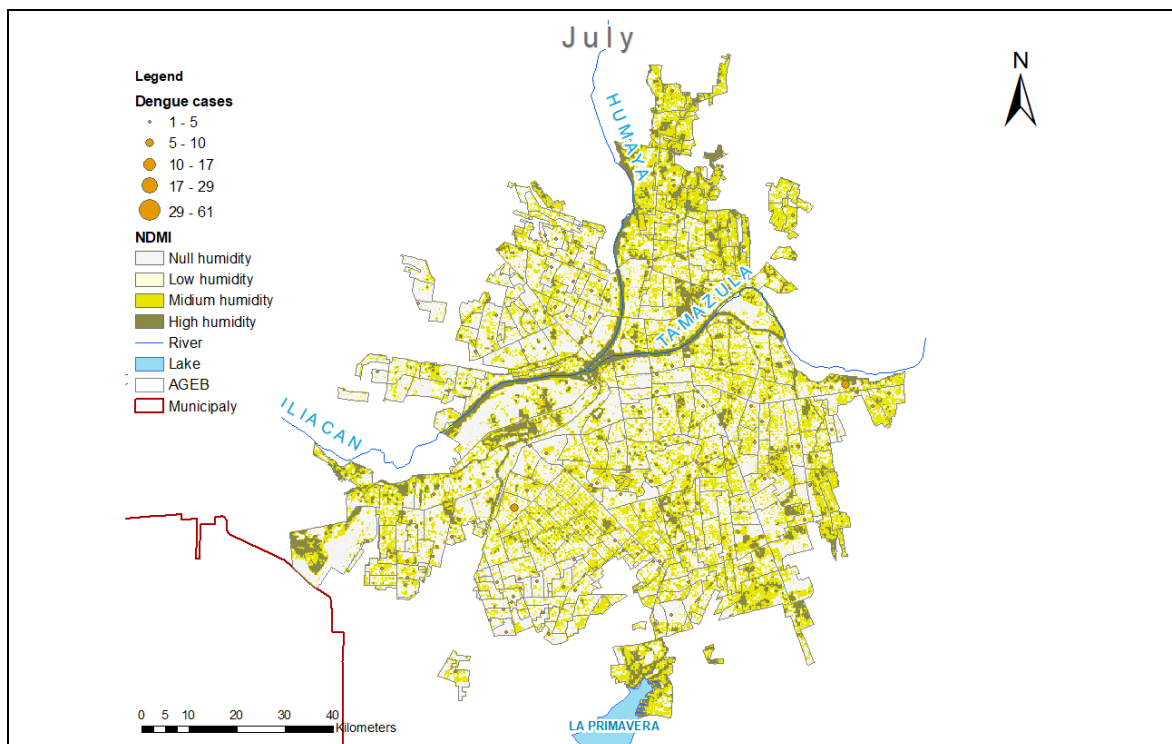


Figure S31. July NDMI and dengue cases, Culiacán, Mexico.

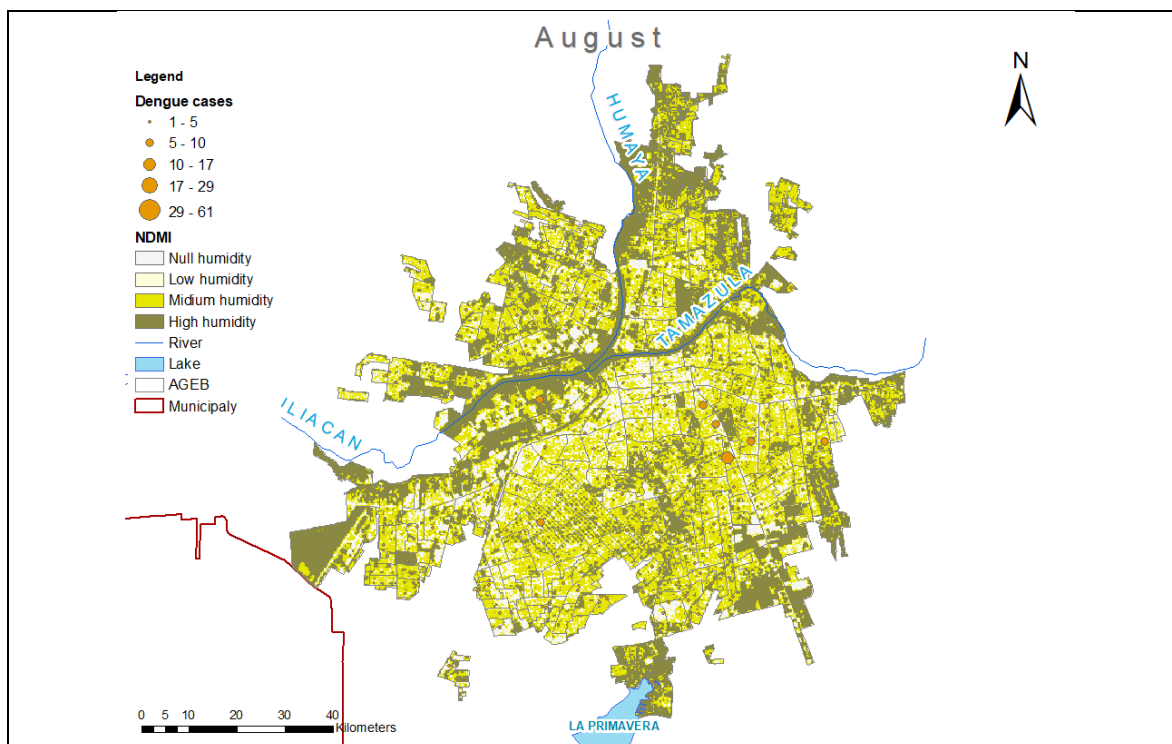


Figure S32. August NDMI and dengue cases, Culiacán, Mexico.

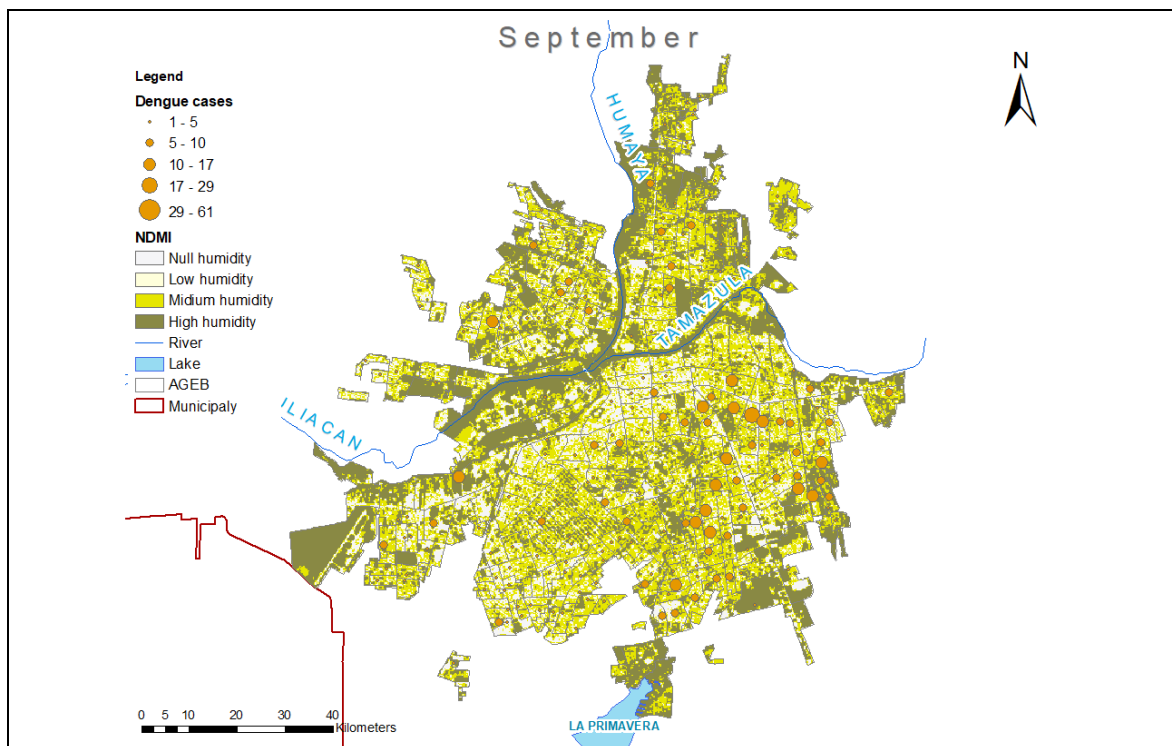


Figure S33. September NDMI and dengue cases, Culiacán, Mexico.

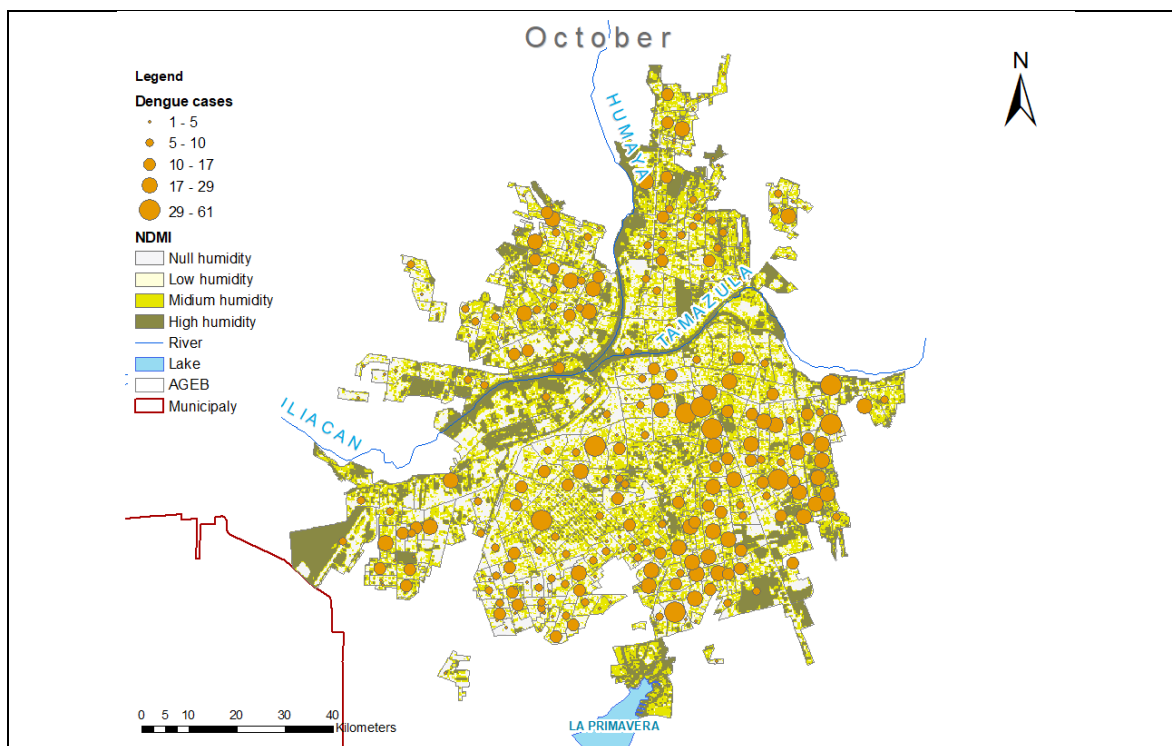


Figure S34. October NDMI and dengue cases, Culiacán, Mexico.

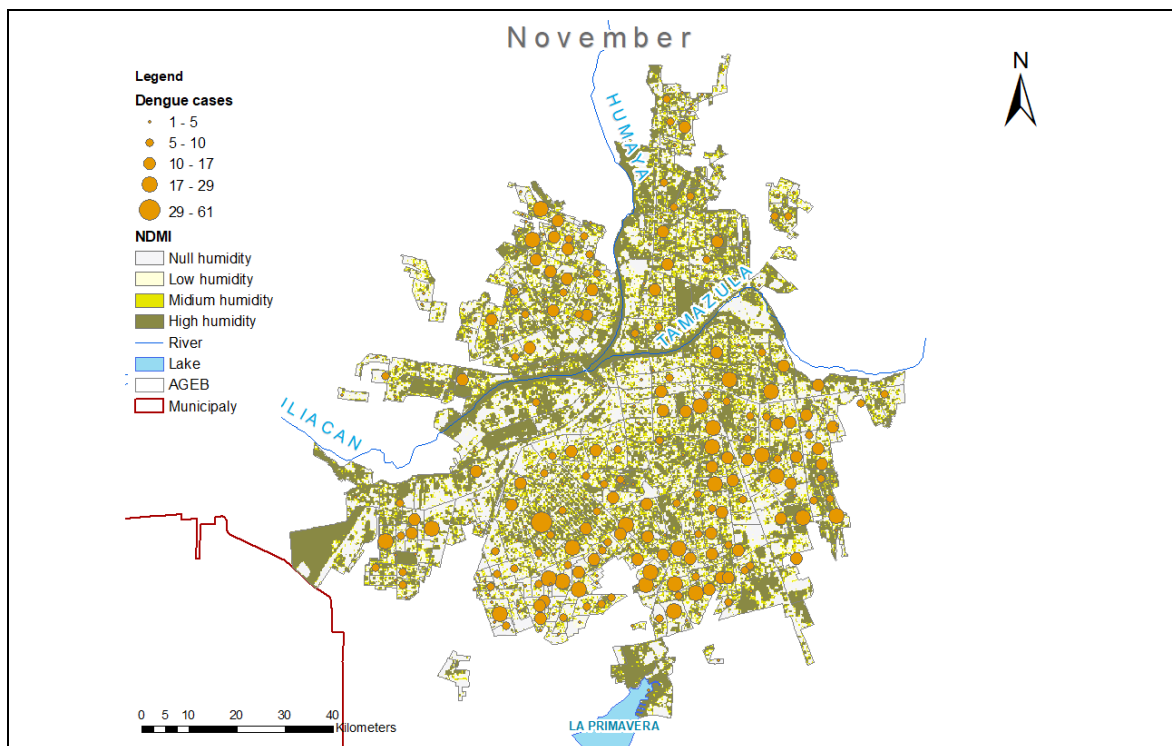


Figure S35. November NDMI and dengue cases, Culiacán, Mexico.

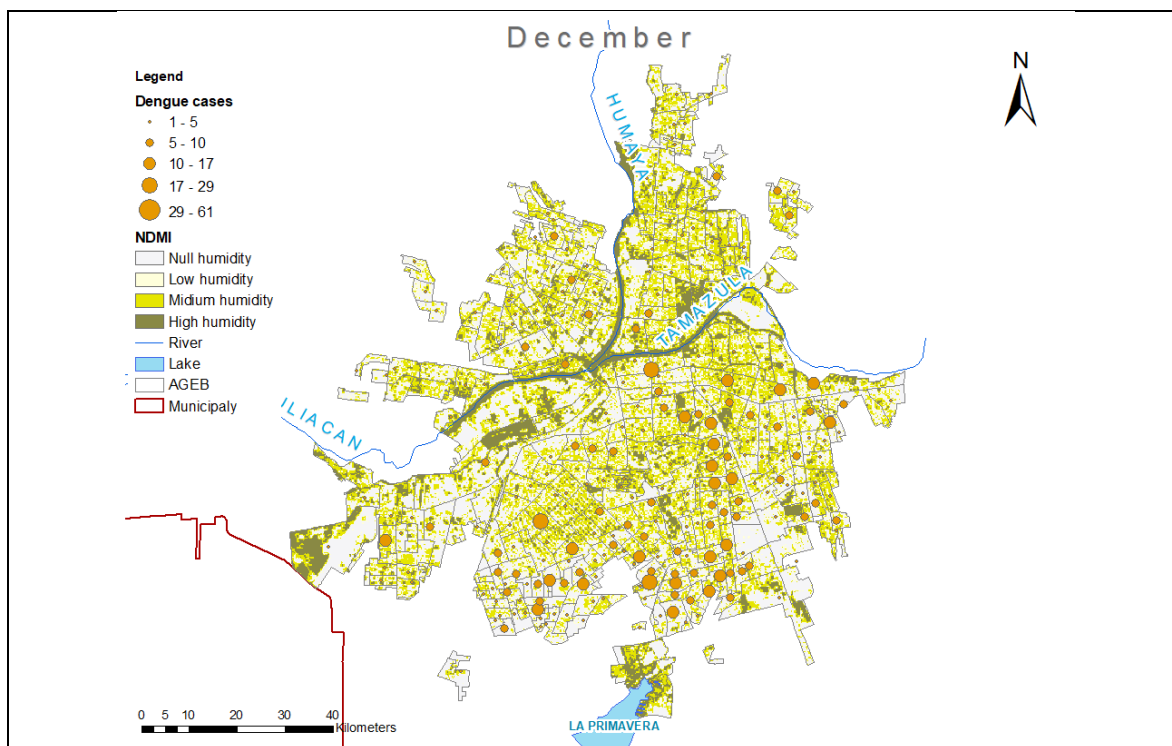


Figure S36. December NDMI and dengue cases, Culiacán, Mexico.

Egg density per positive ovitrap

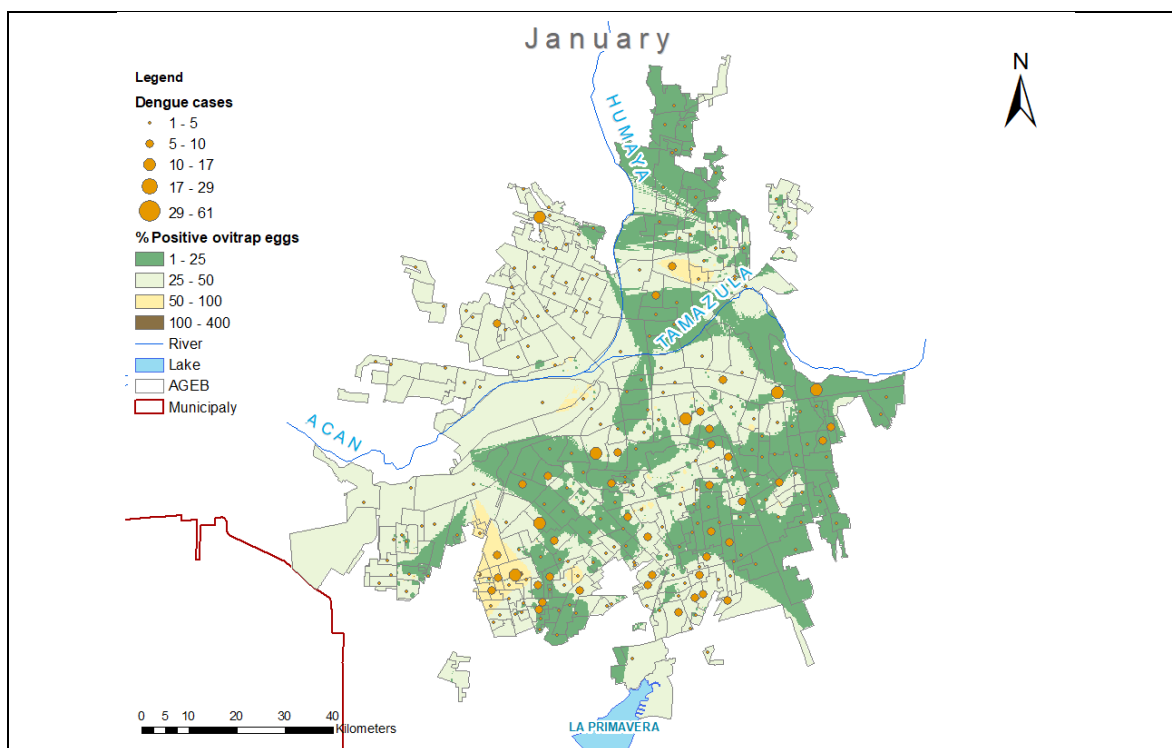


Figure S37. January egg density per positive ovitrap and dengue cases, Culiacán, Mexico.

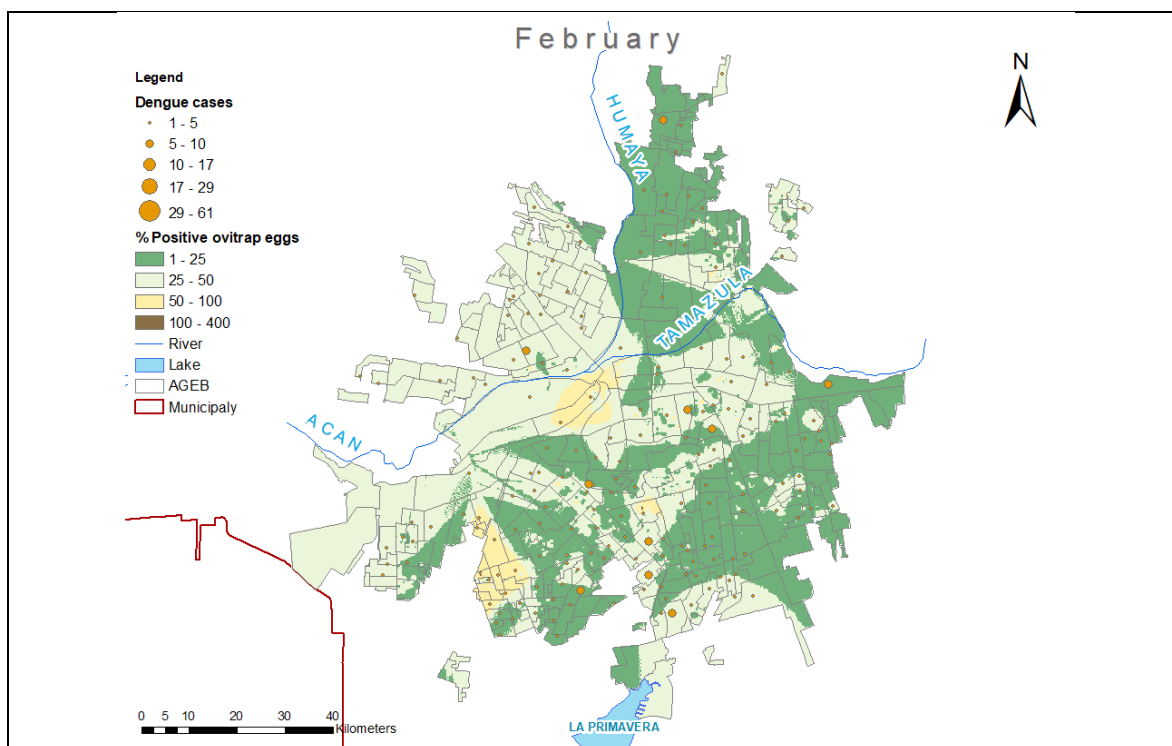


Figure S38. February egg density per positive ovitrap and dengue cases, Culiacán, Mexico.

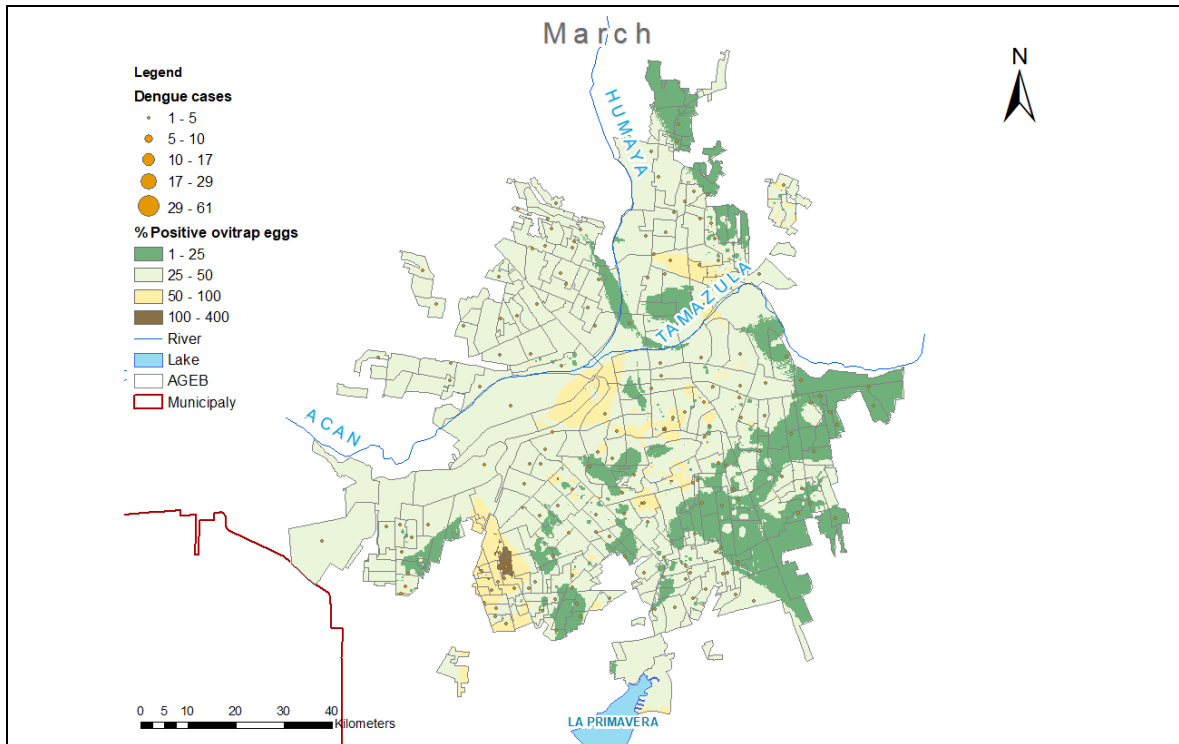


Figure S39. March egg density per positive ovitrap and dengue cases, Culiacán, Mexico.

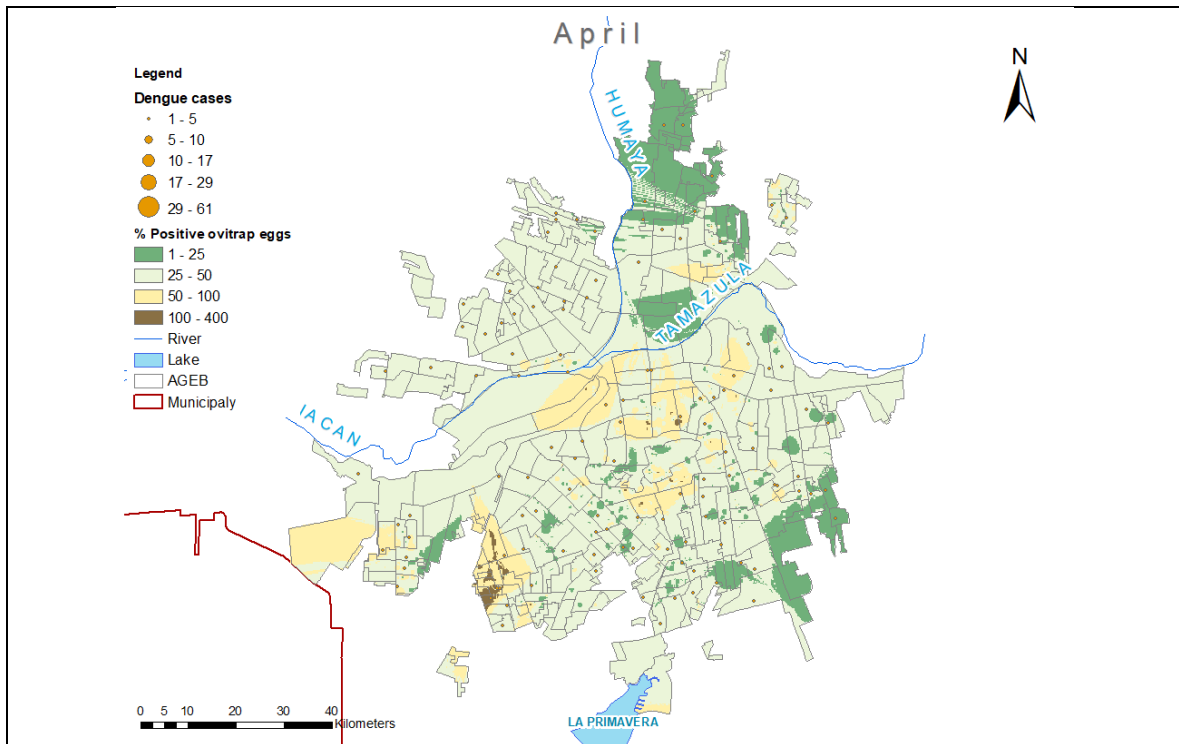


Figure S40. April egg density per positive ovitrap and dengue cases, Culiacán, Mexico.

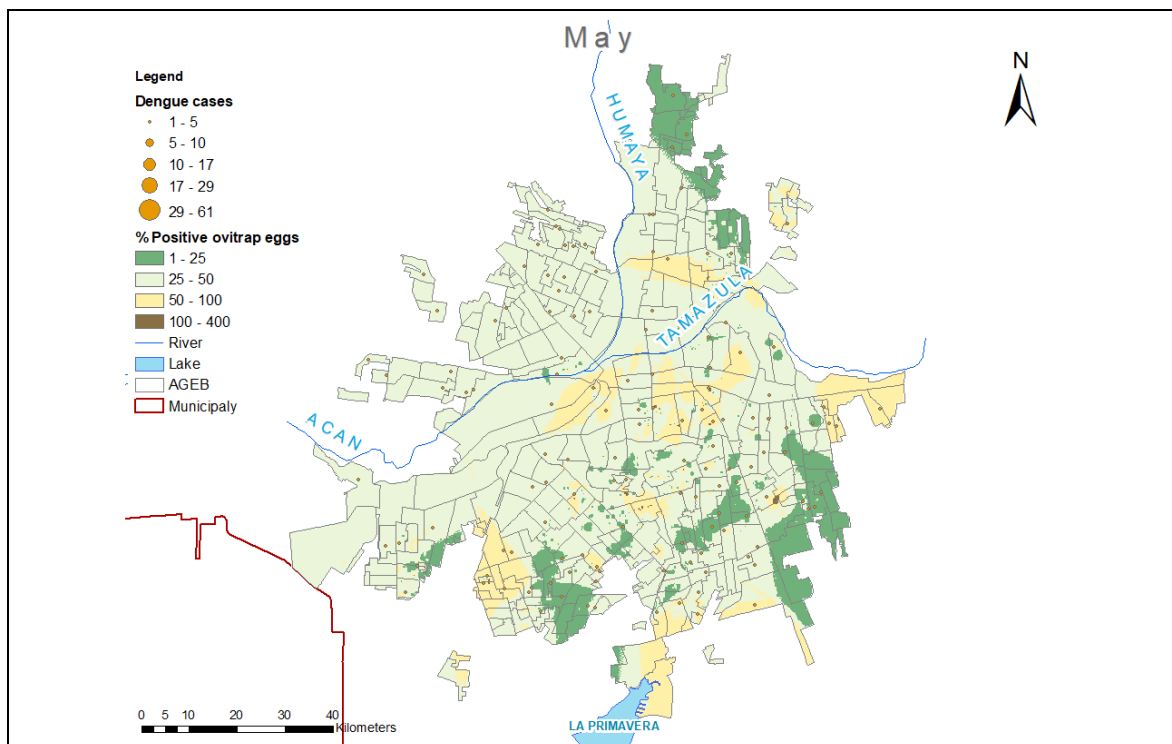


Figure S41. May egg density per positive ovitrap and dengue cases, Culiacán, Mexico.

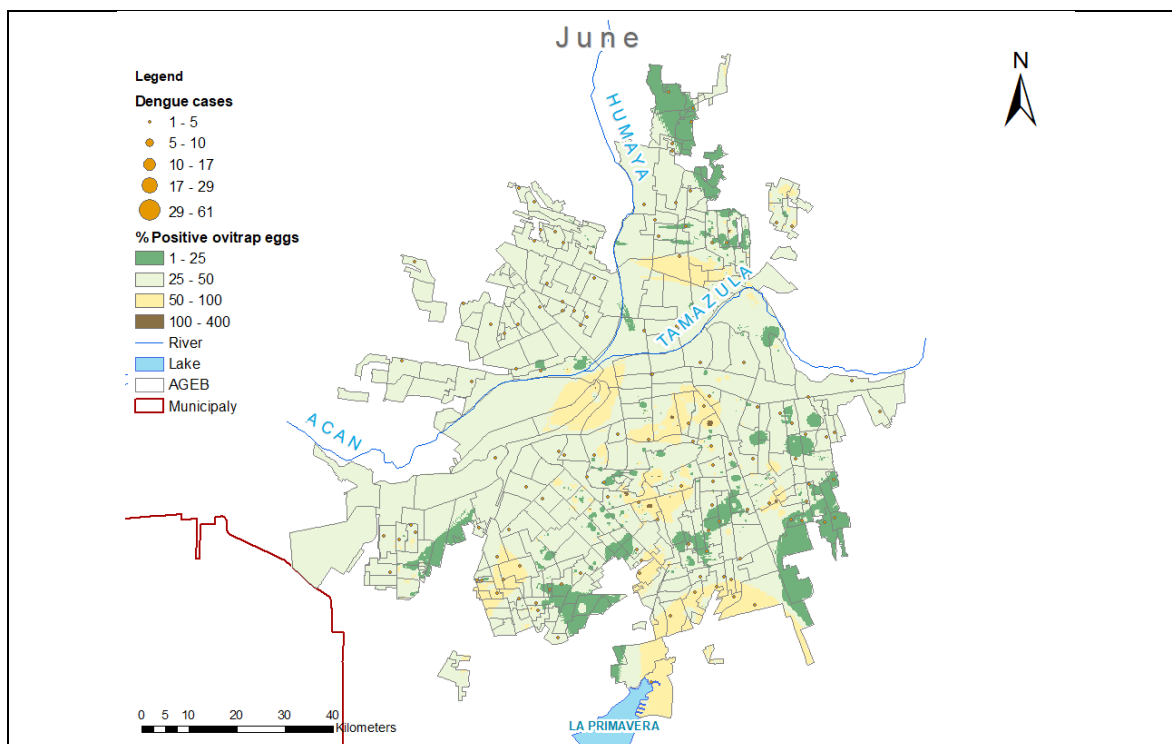


Figure S42. June egg density per positive ovitrap and dengue cases, Culiacán, Mexico.

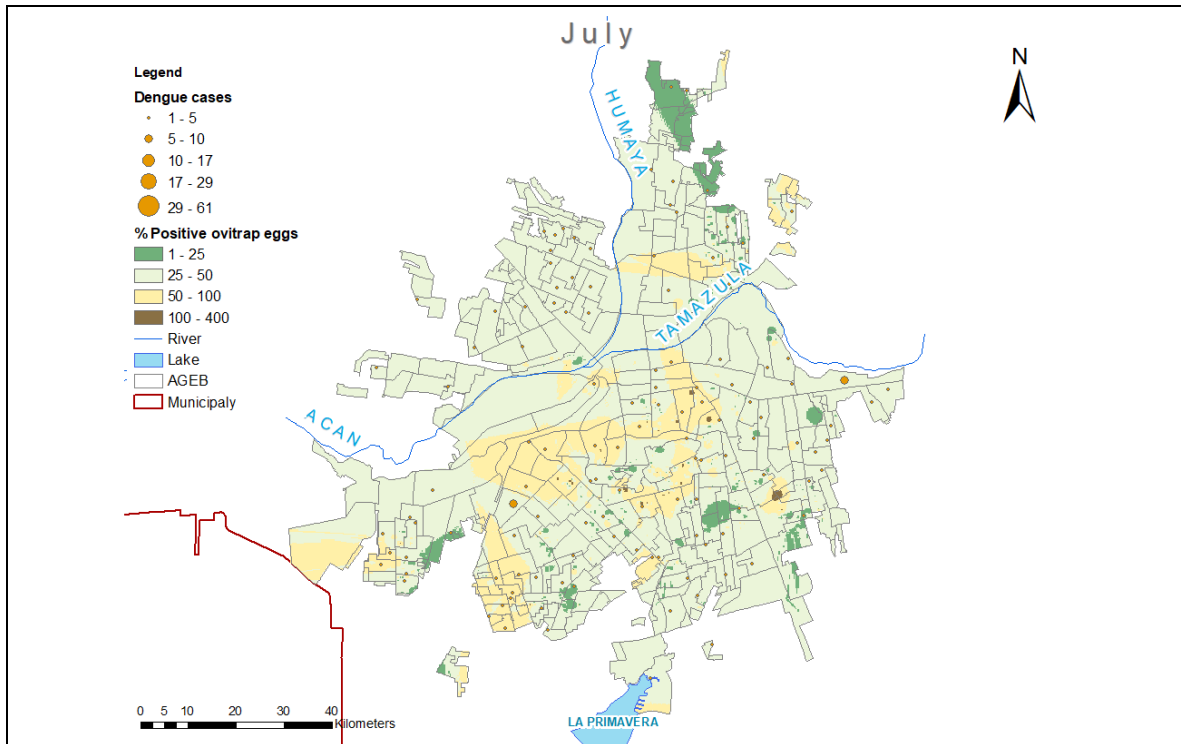


Figure S43. July egg density per positive ovitrap and dengue cases, Culiacán, Mexico.

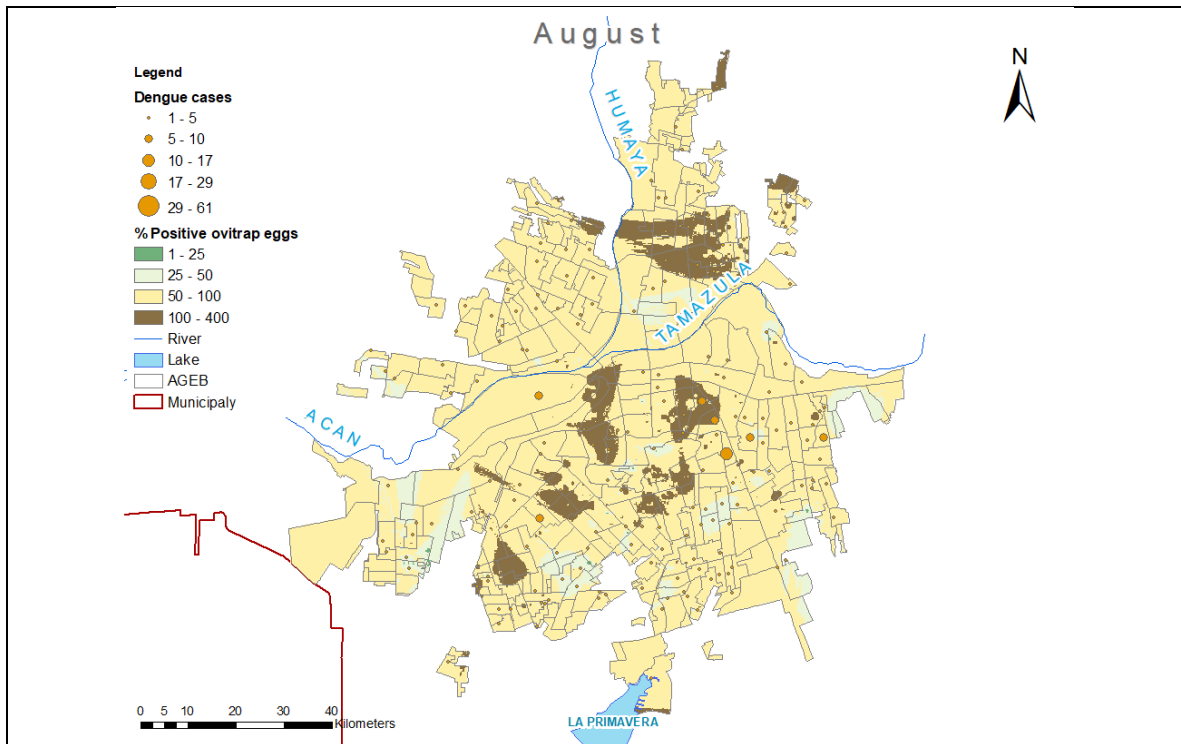


Figure S44. August egg density per positive ovitrap and dengue cases, Culiacán, Mexico.

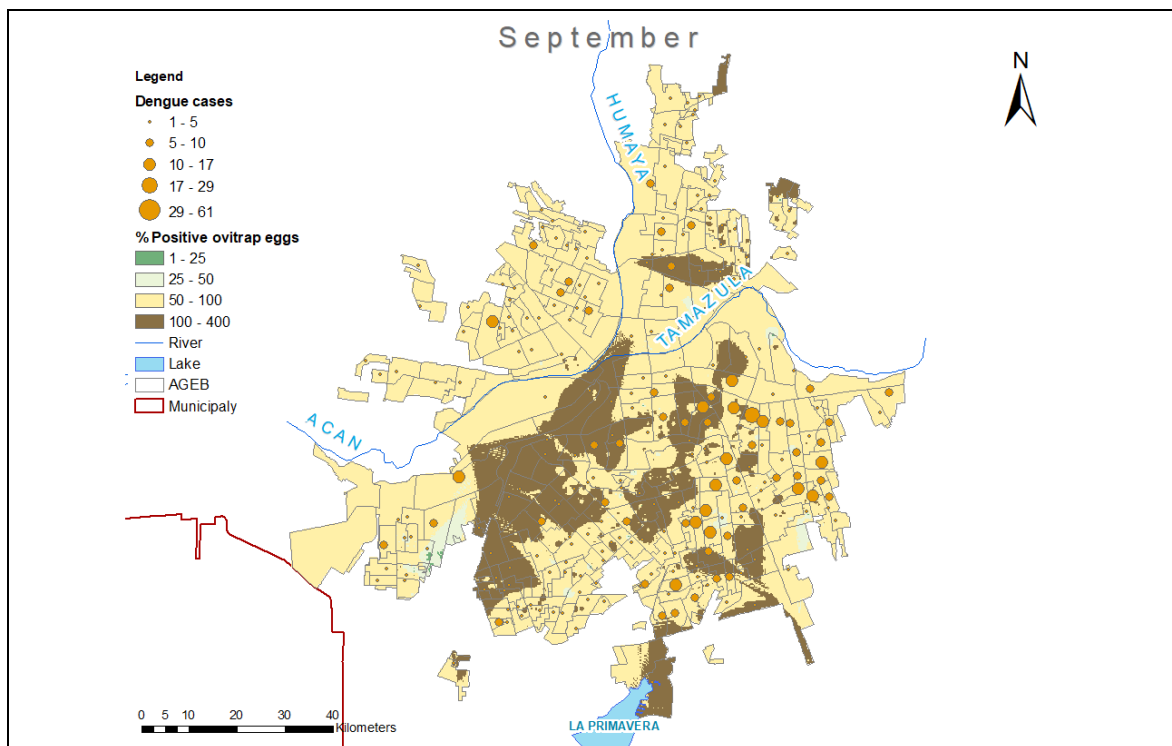


Figure S45. September egg density per positive ovitrap and dengue cases, Culiacán, Mexico.

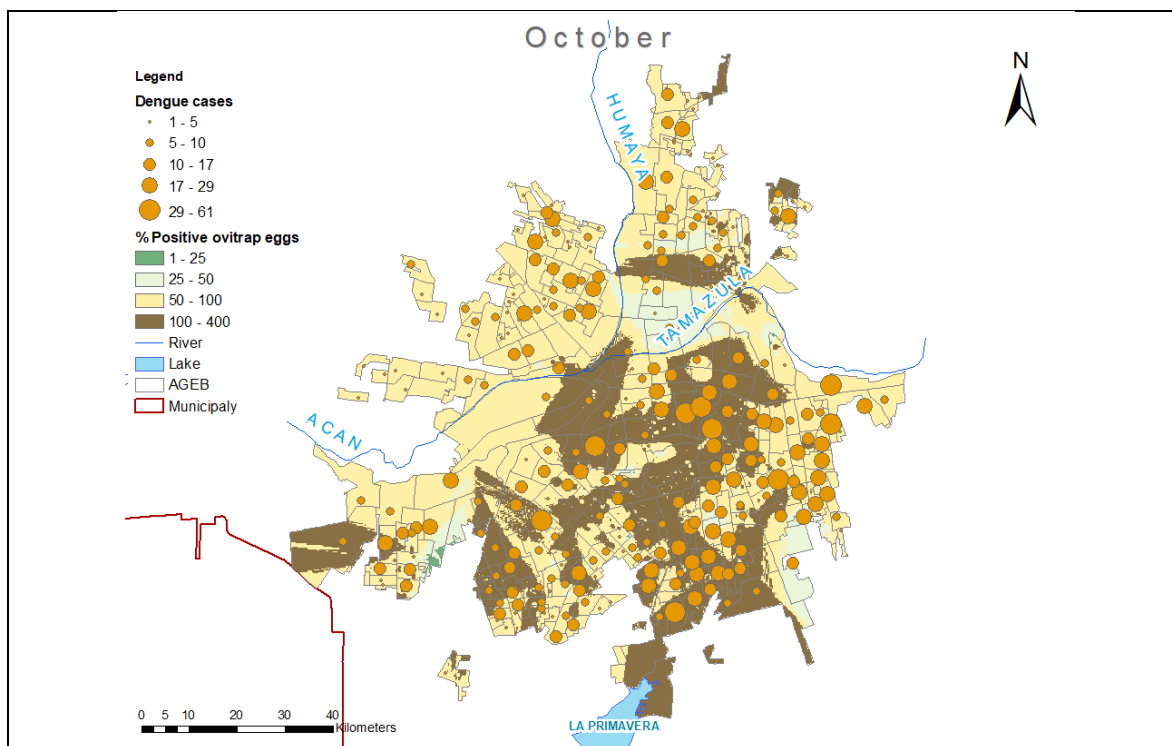


Figure S46. October egg density per positive ovitrap and dengue cases, Culiacán, Mexico.

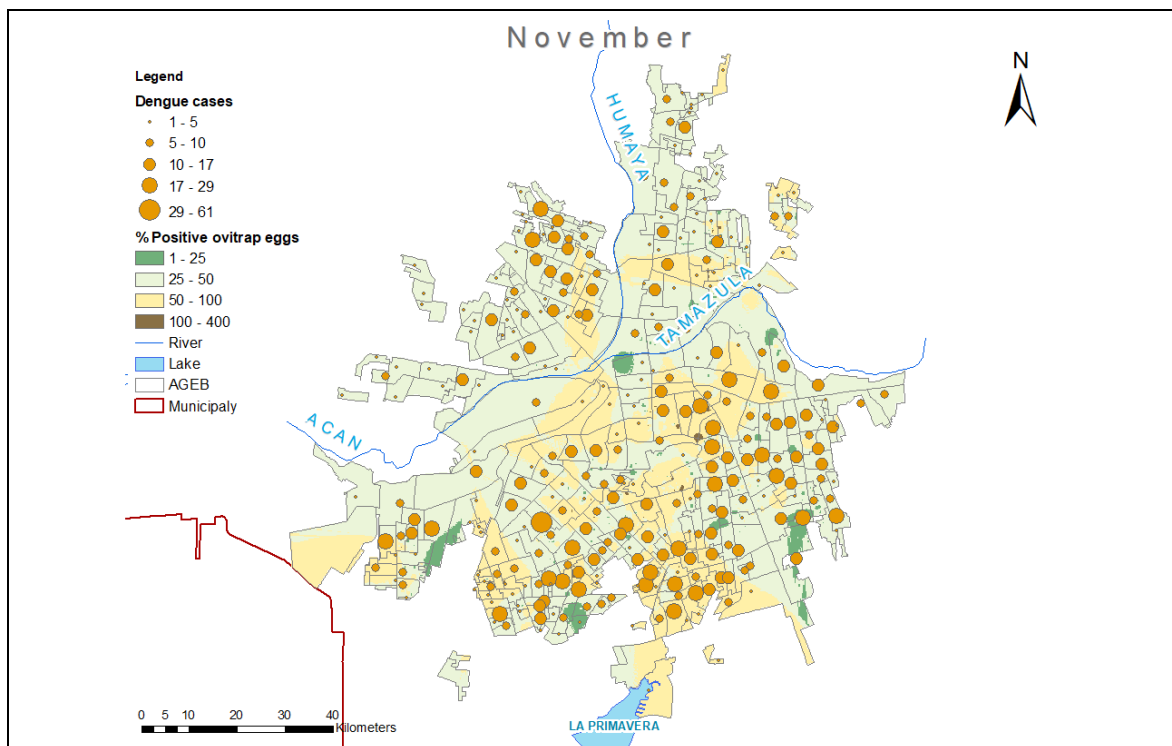


Figure S47. November egg density per positive ovitrap and dengue cases, Culiacán, Mexico.

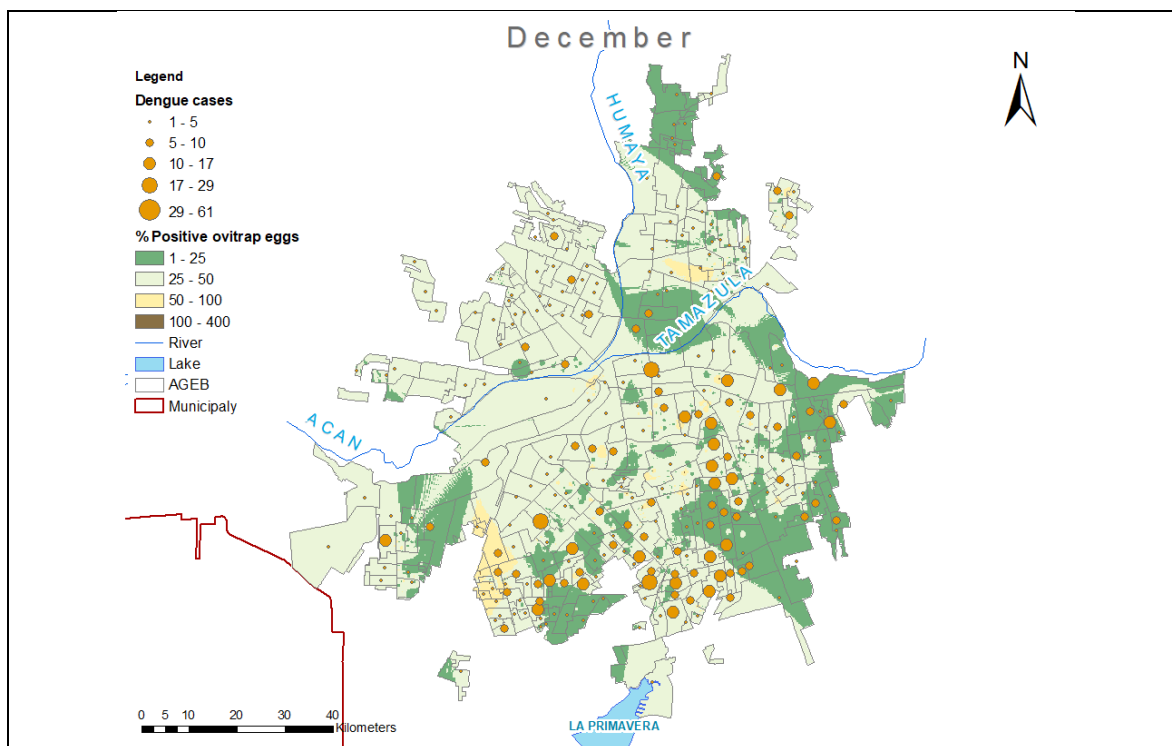


Figure S48. December egg density per positive ovitrap and dengue cases, Culiacán, Mexico.

Dengue cases density

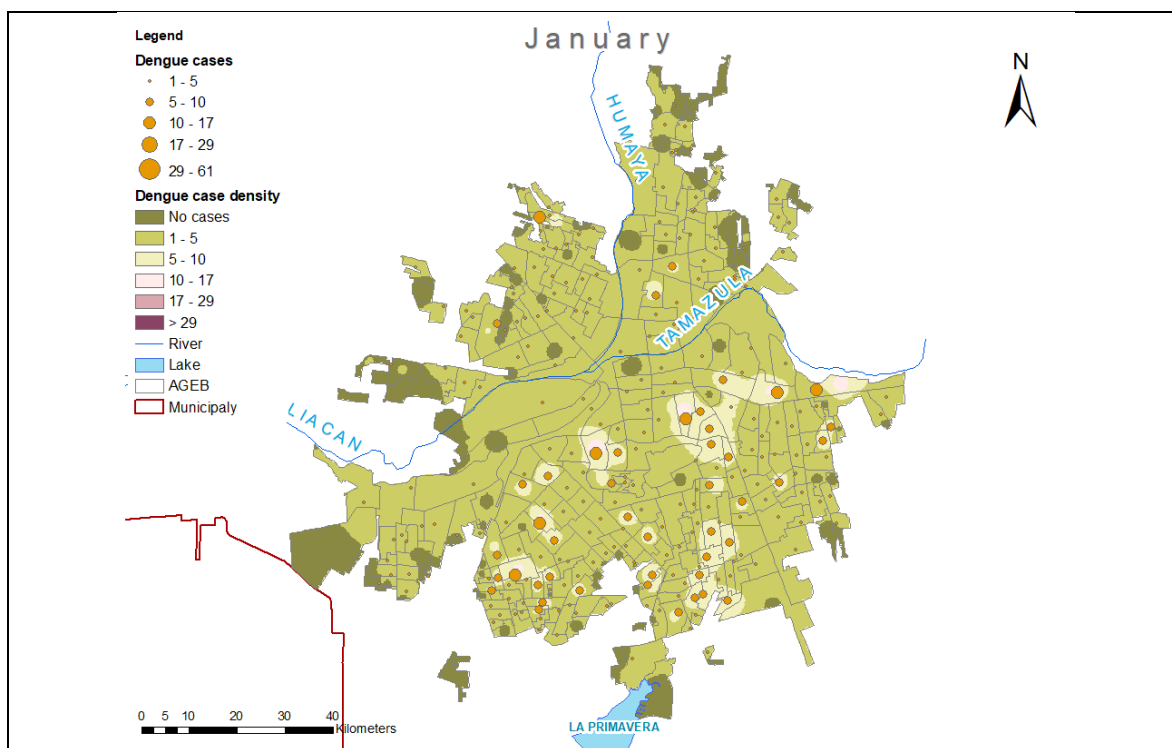


Figure S49. January dengue cases density and dengue cases, Culiacán, Mexico.

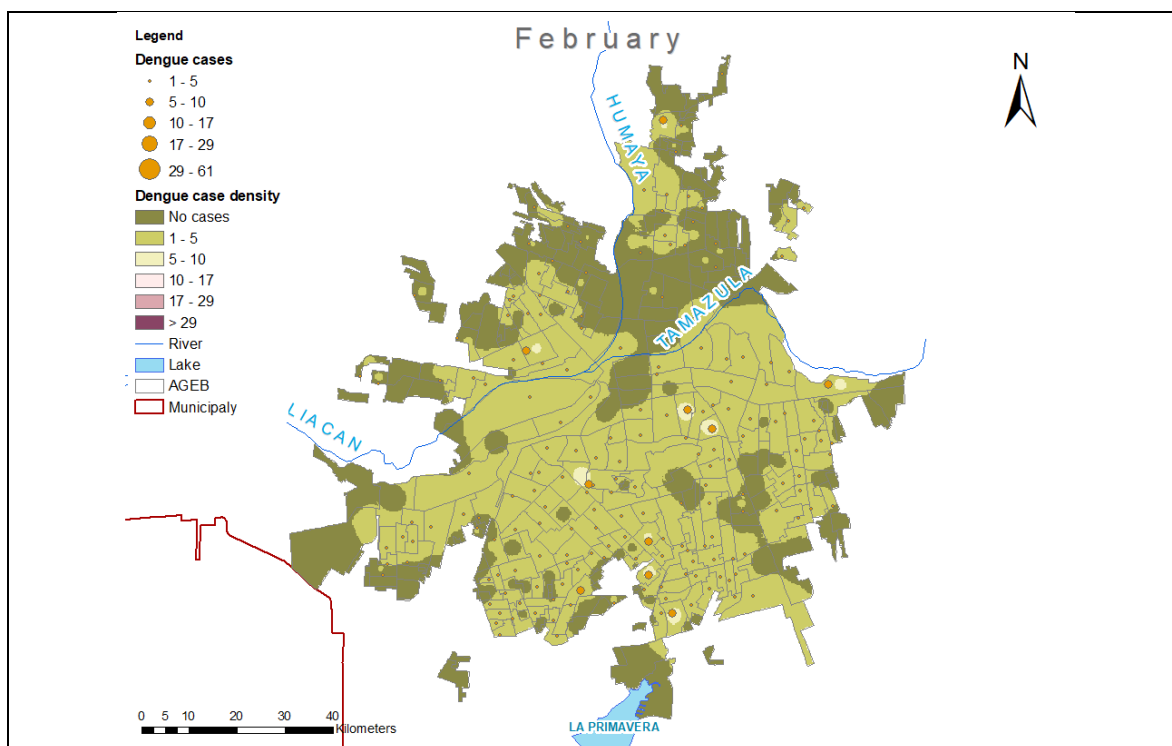


Figure S50. February dengue cases density and dengue cases, Culiacán, Mexico.

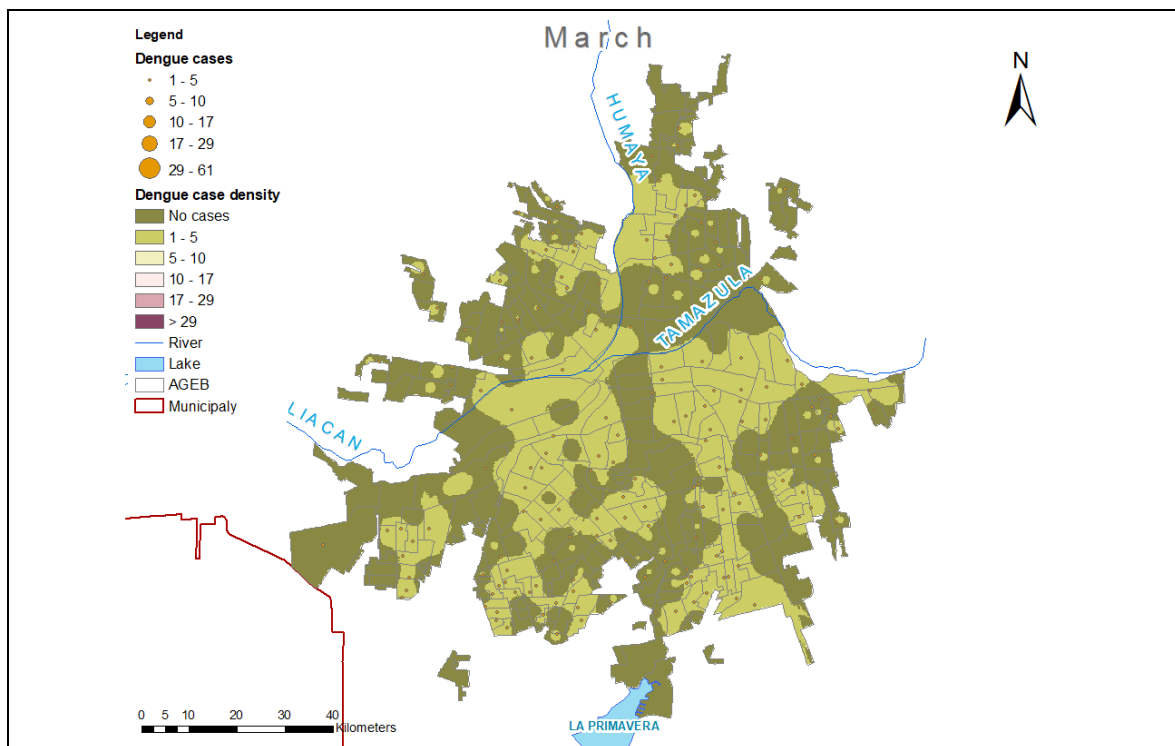


Figure S51. March dengue cases density and dengue cases, Culiacán, Mexico.

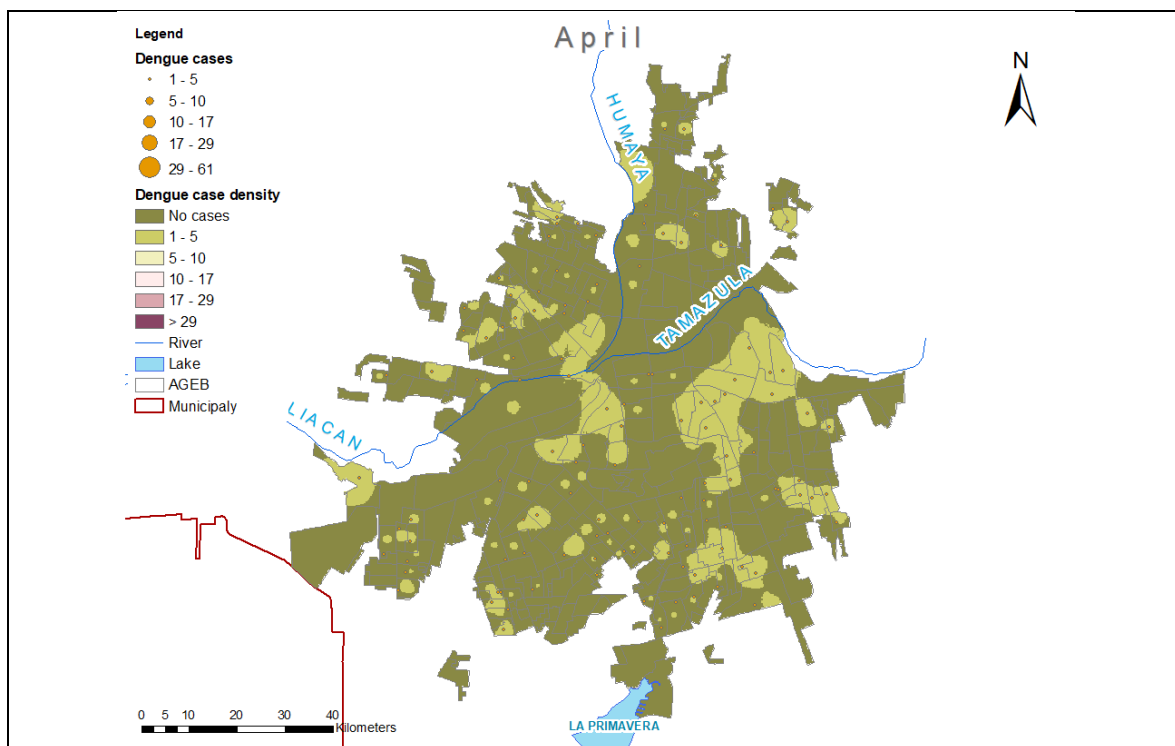


Figure S52. April dengue cases density and dengue cases, Culiacán, Mexico.

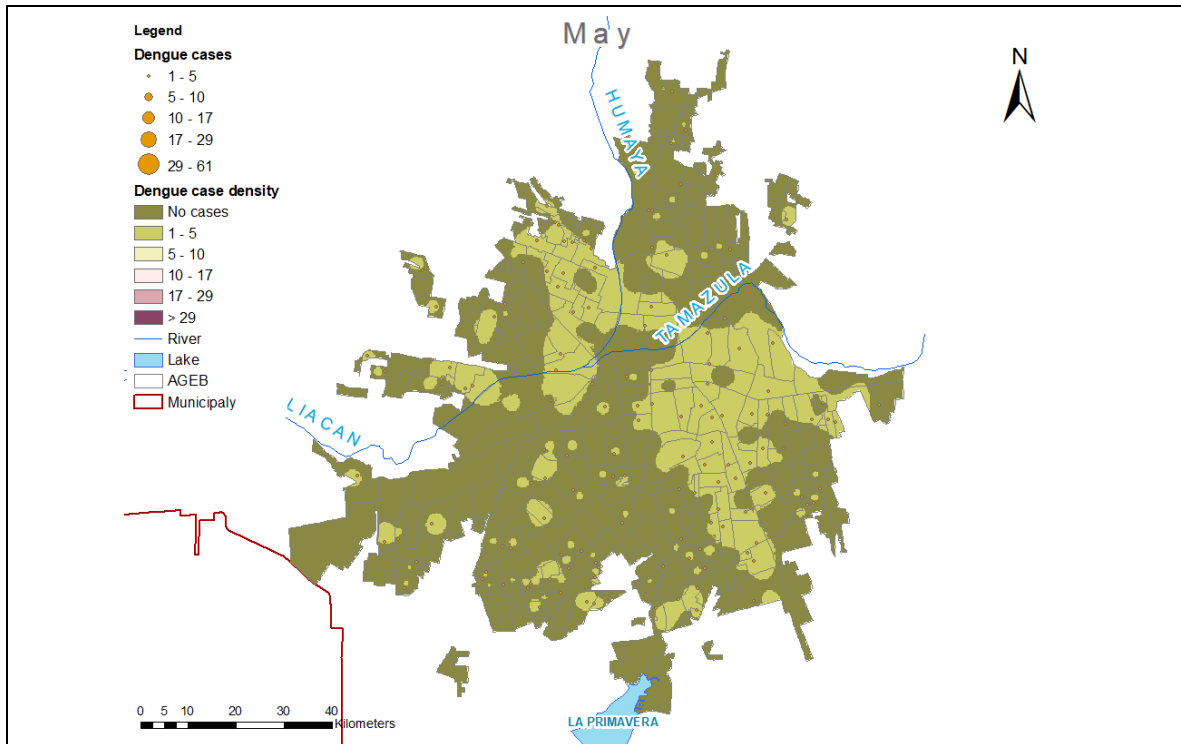


Figure S53. May dengue cases density and dengue cases, Culiacán, Mexico.

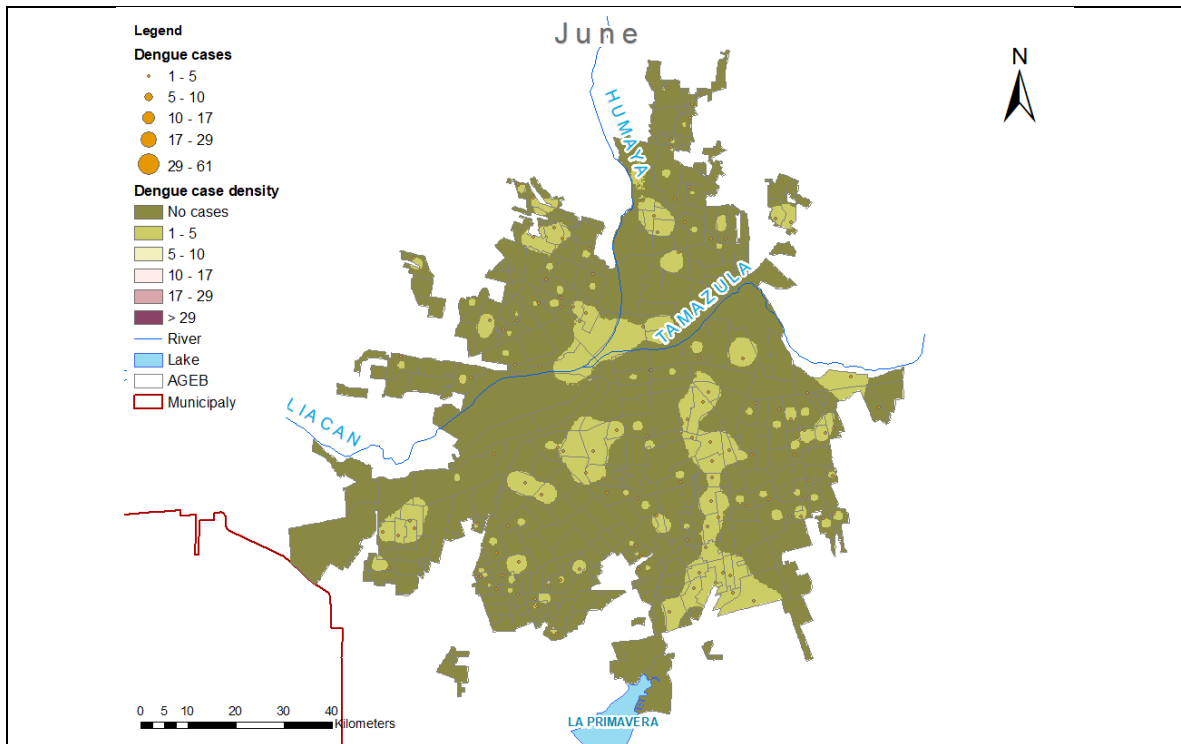


Figure S54. June dengue cases density and dengue cases, Culiacán, Mexico.

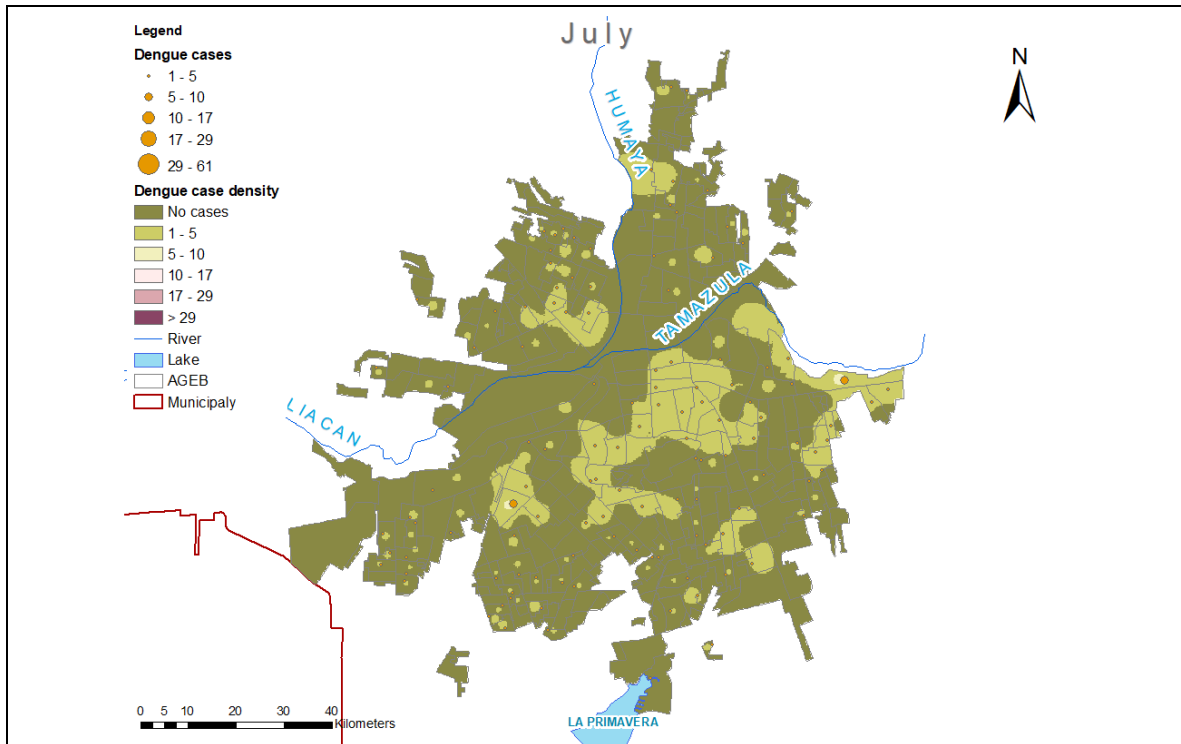


Figure S55. July dengue cases density and dengue cases, Culiacán, Mexico.

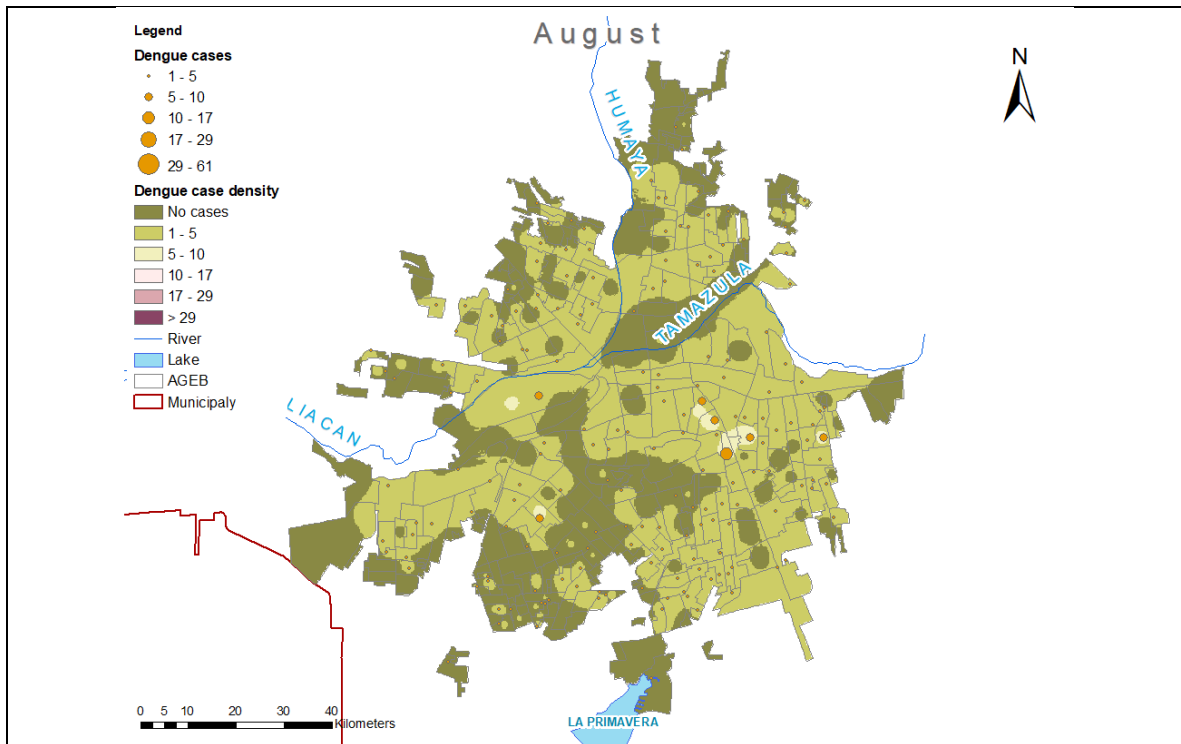


Figure S56. August dengue cases density and dengue cases, Culiacán, Mexico.

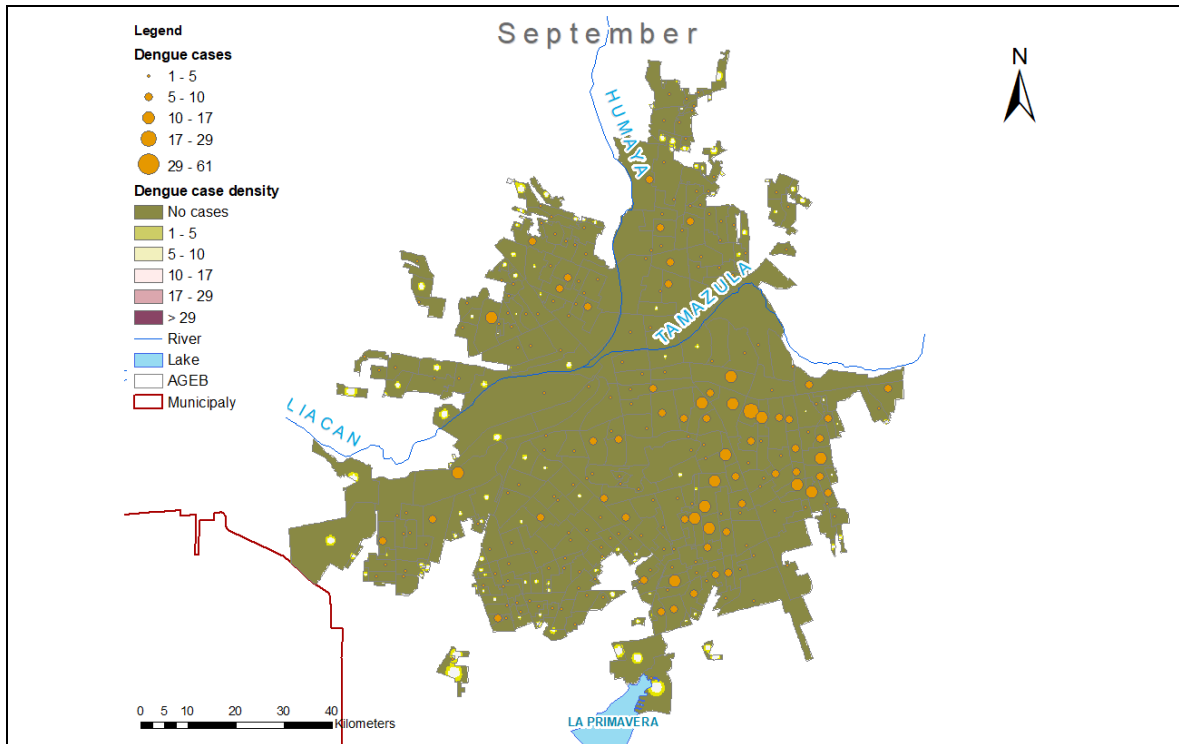


Figure S57. September dengue cases density and dengue cases, Culiacán, Mexico.

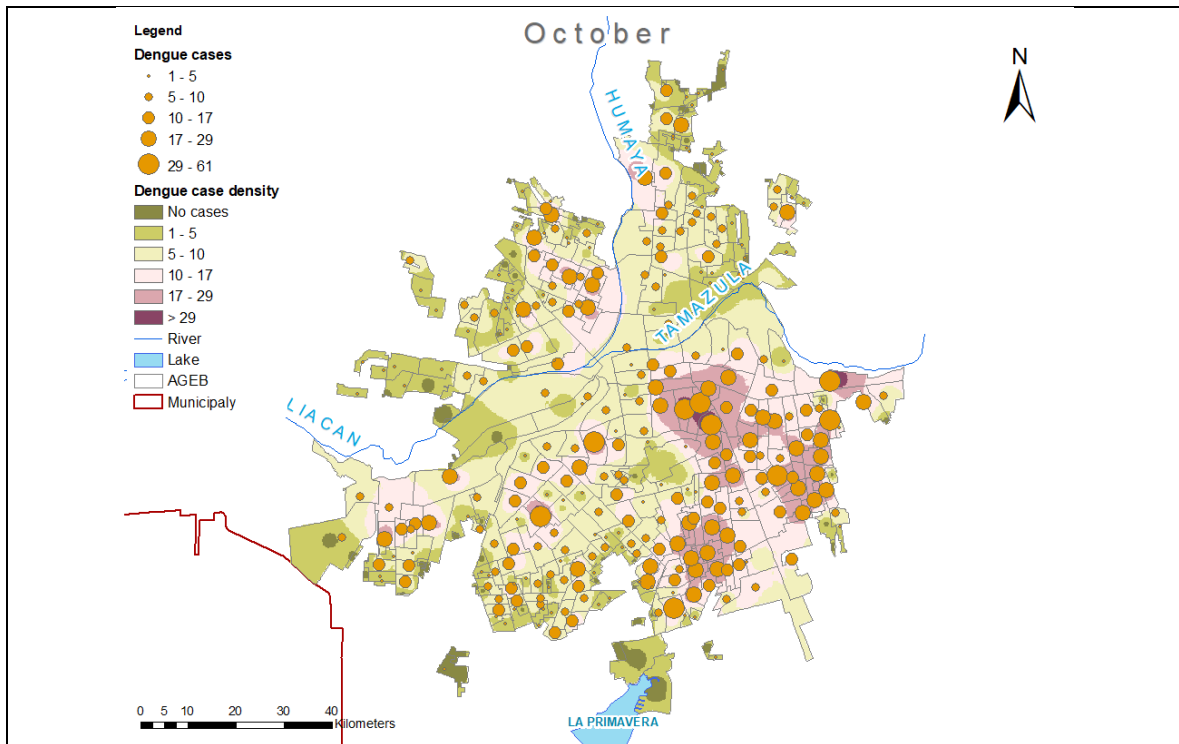


Figure S58. October dengue cases density and dengue cases, Culiacán, Mexico.

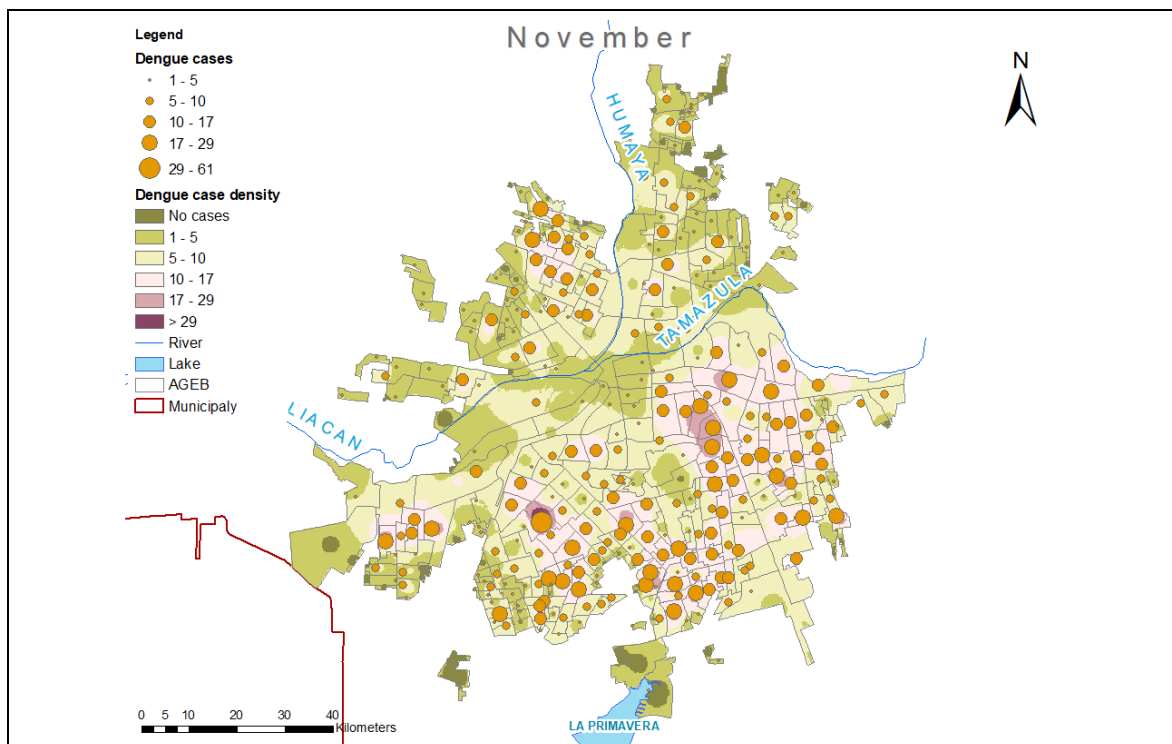


Figure S59. November dengue cases density and dengue cases, Culiacán, Mexico.

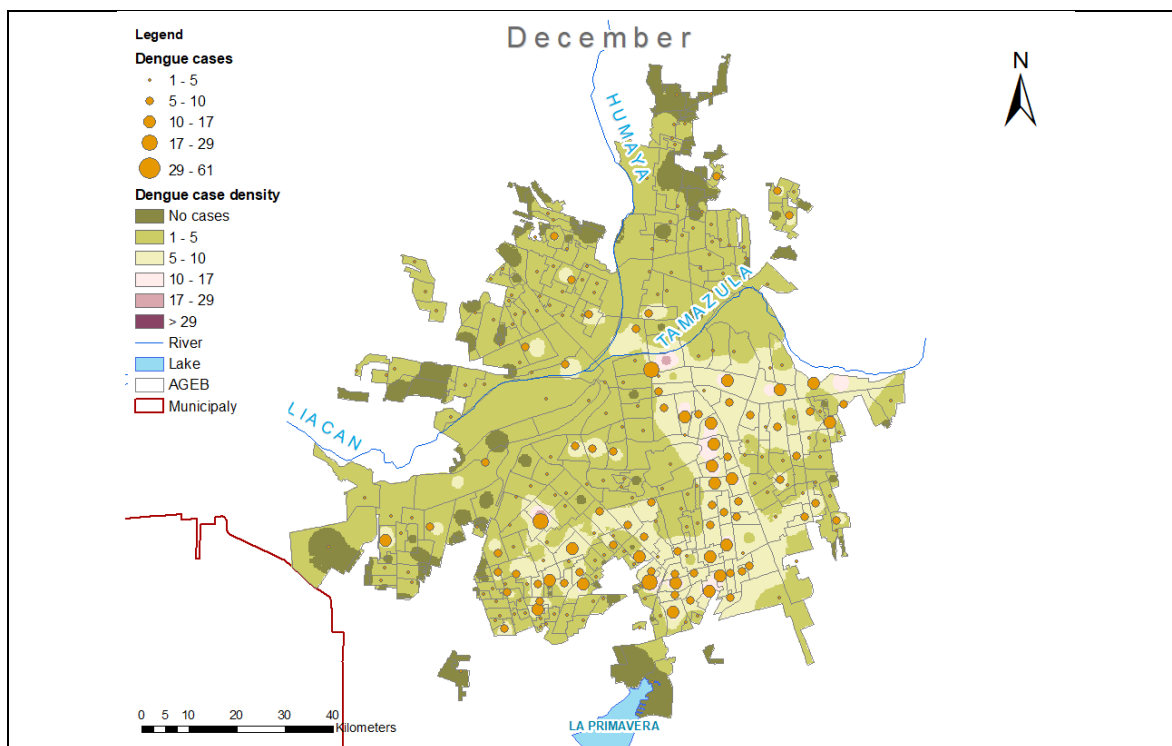


Figure S60. December dengue cases density and dengue cases, Culiacán, Mexico.

Dengue transmission risk areas

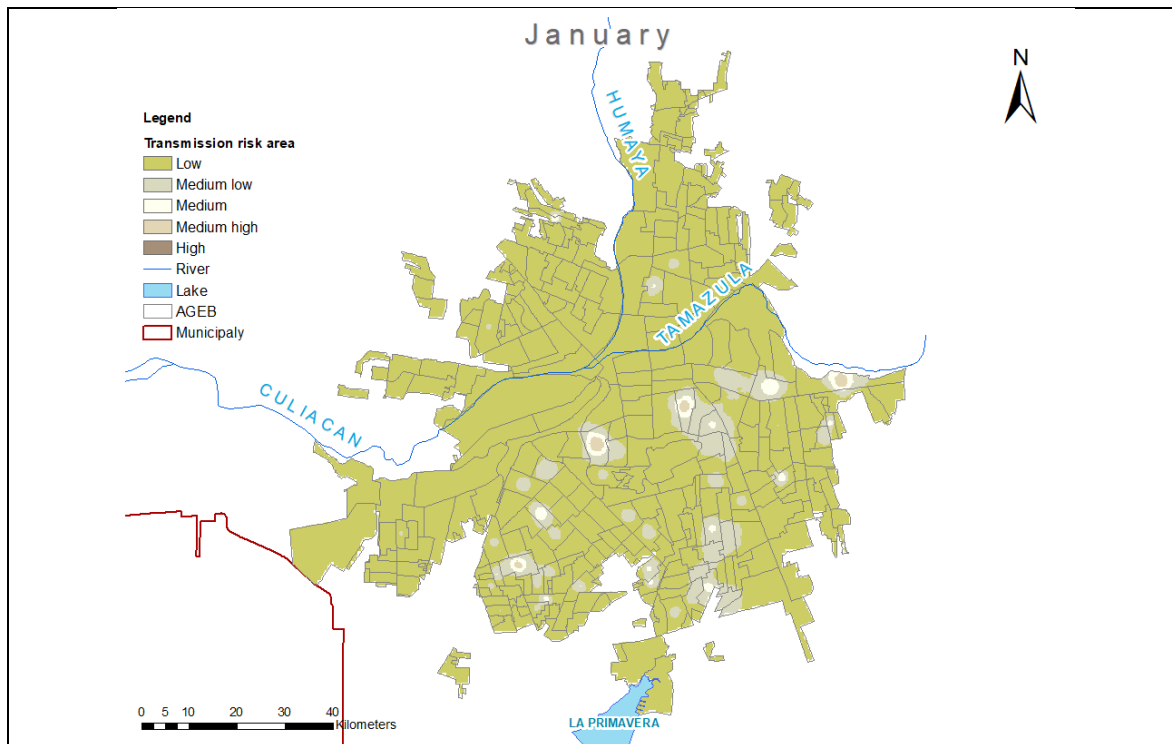


Figure S61. January dengue transmission risk area, Culiacán, Mexico.

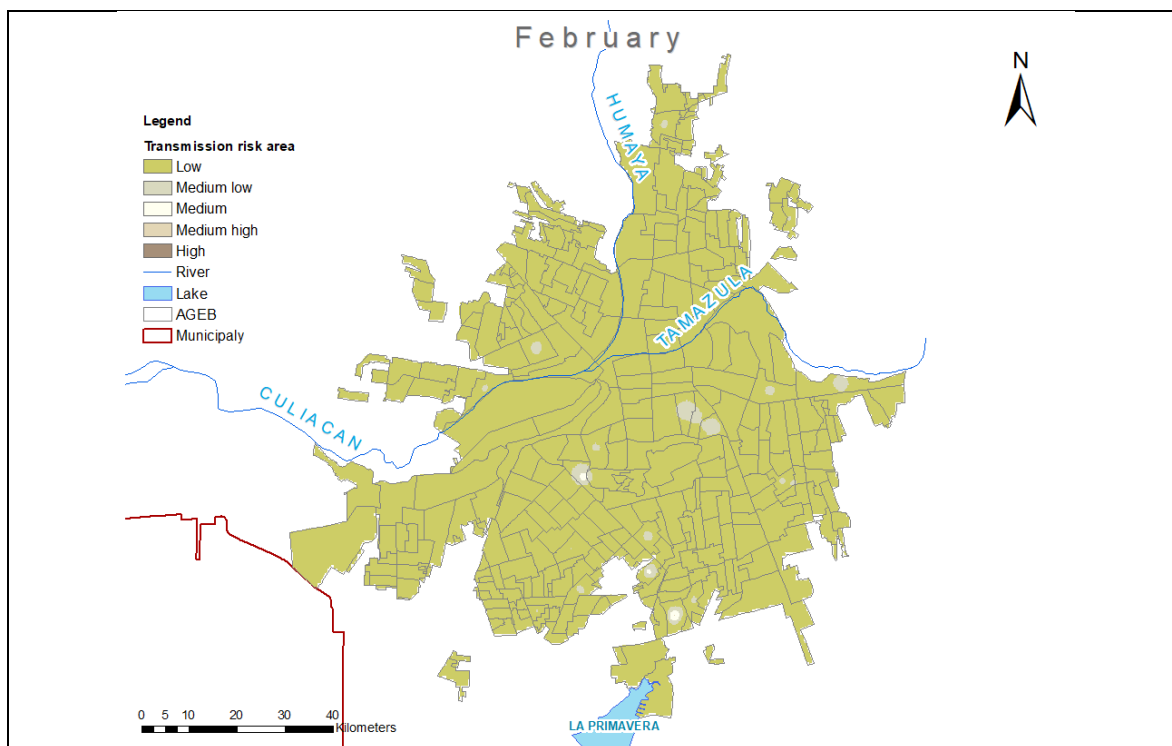


Figure S62. February dengue transmission risk area, Culiacán, Mexico.

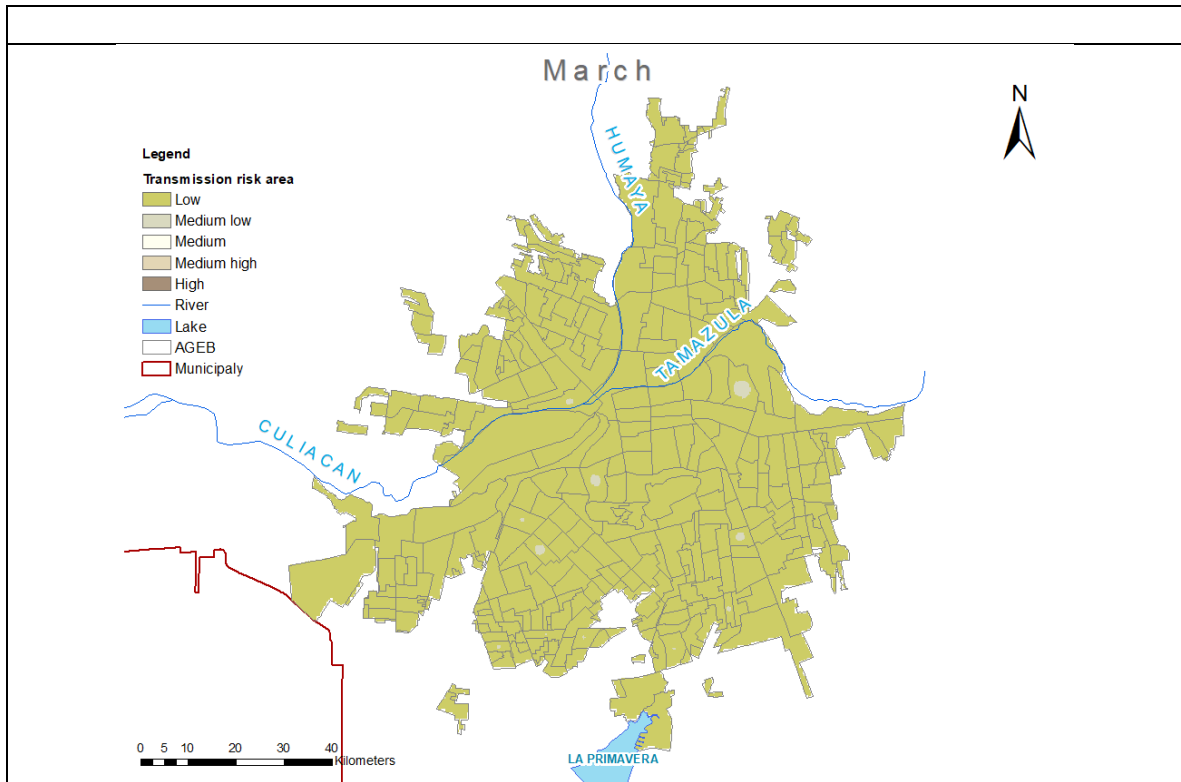


Figure S63. March dengue transmission risk area, Culiacán, Mexico.

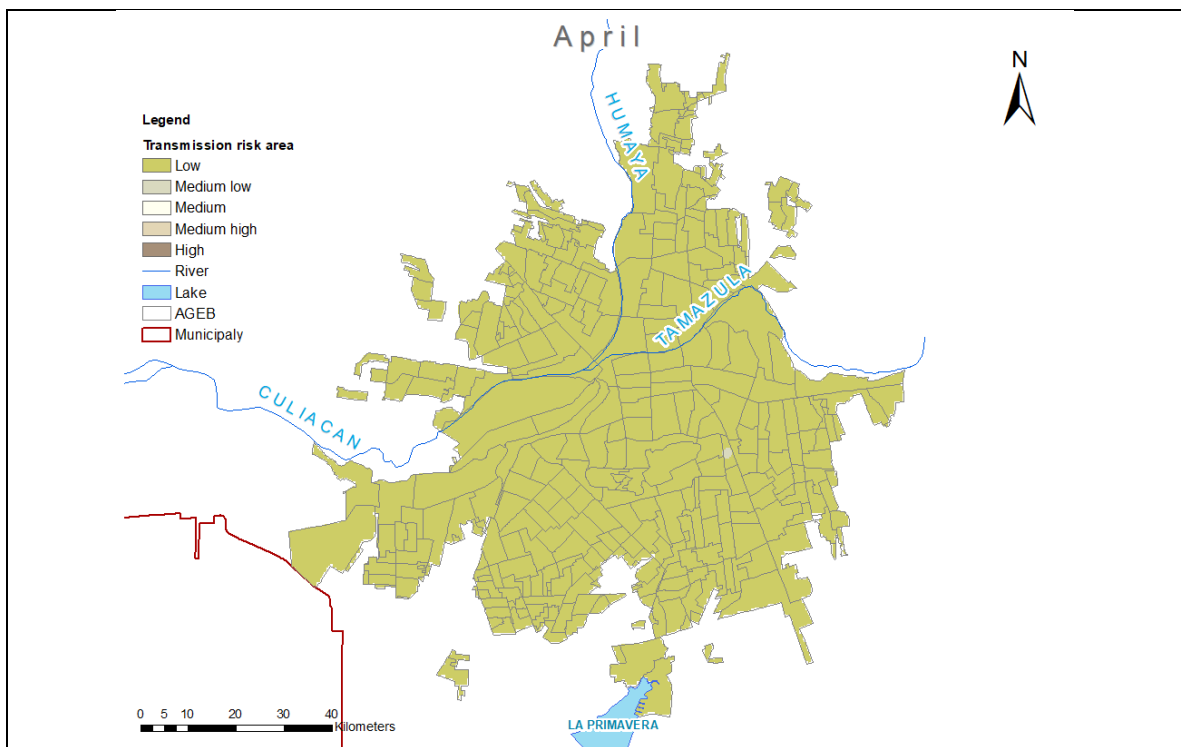


Figure S64. April dengue transmission risk area, Culiacán, Mexico.

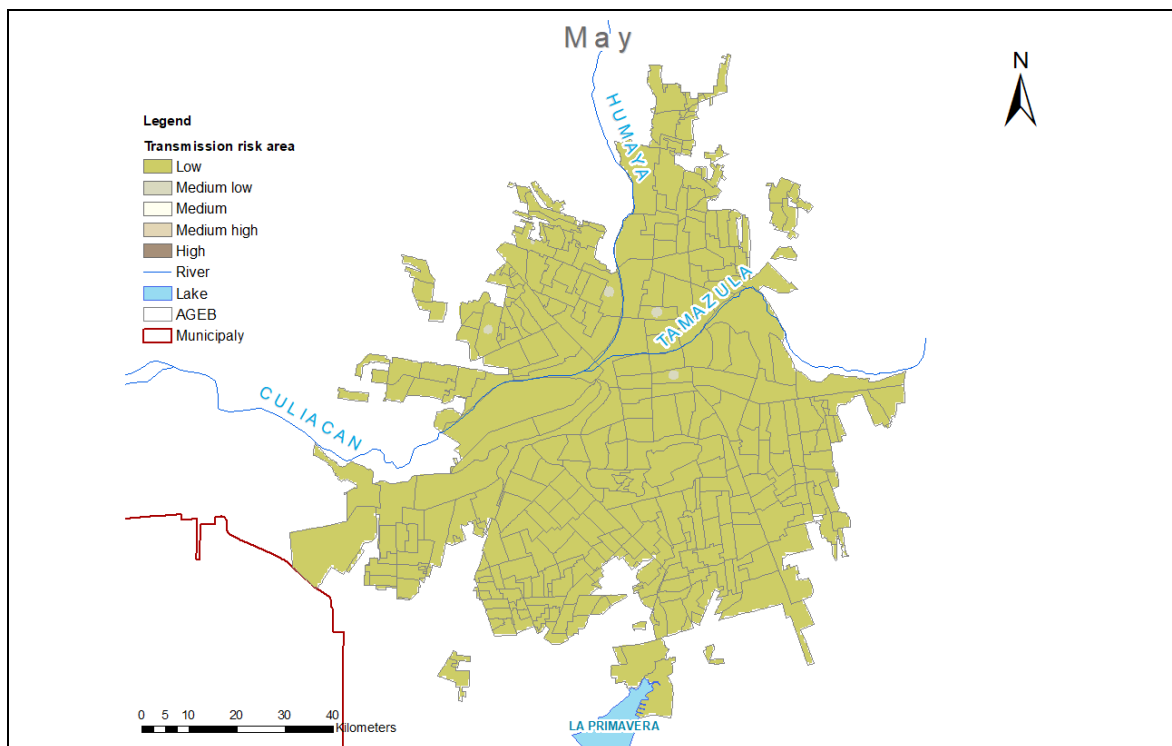


Figure S65. May dengue transmission risk area, Culiacán, Mexico.

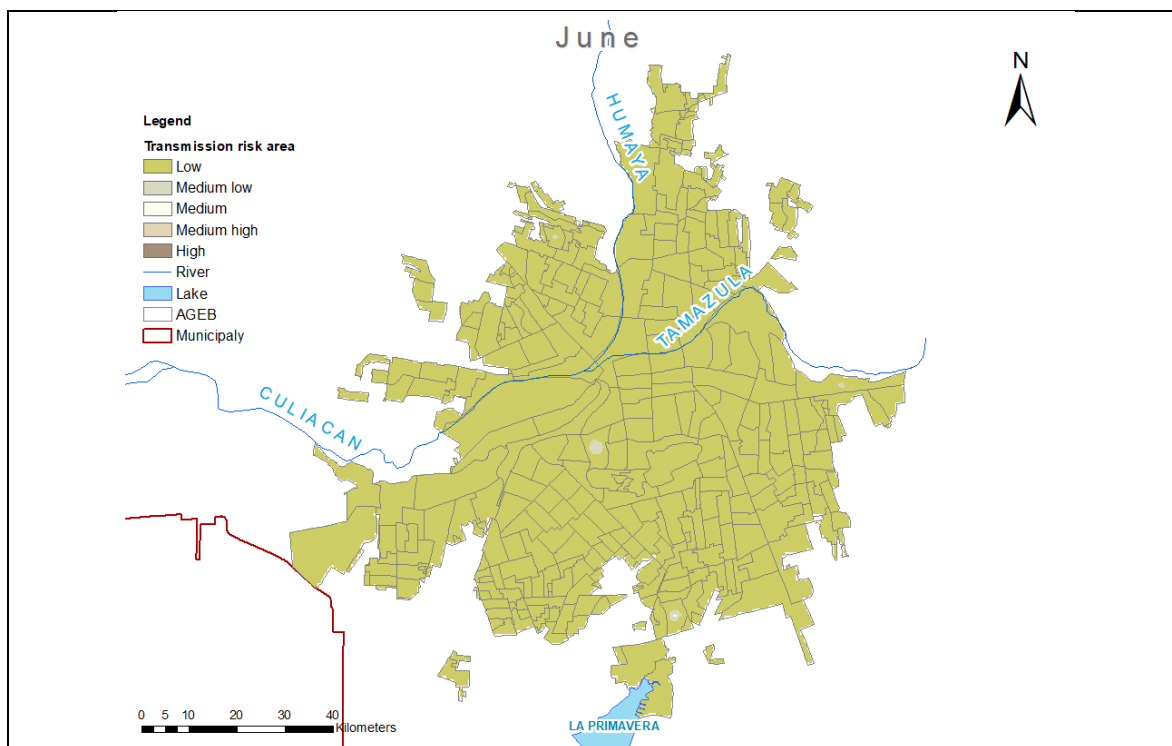


Figure S66. June dengue transmission risk area, Culiacán, Mexico.

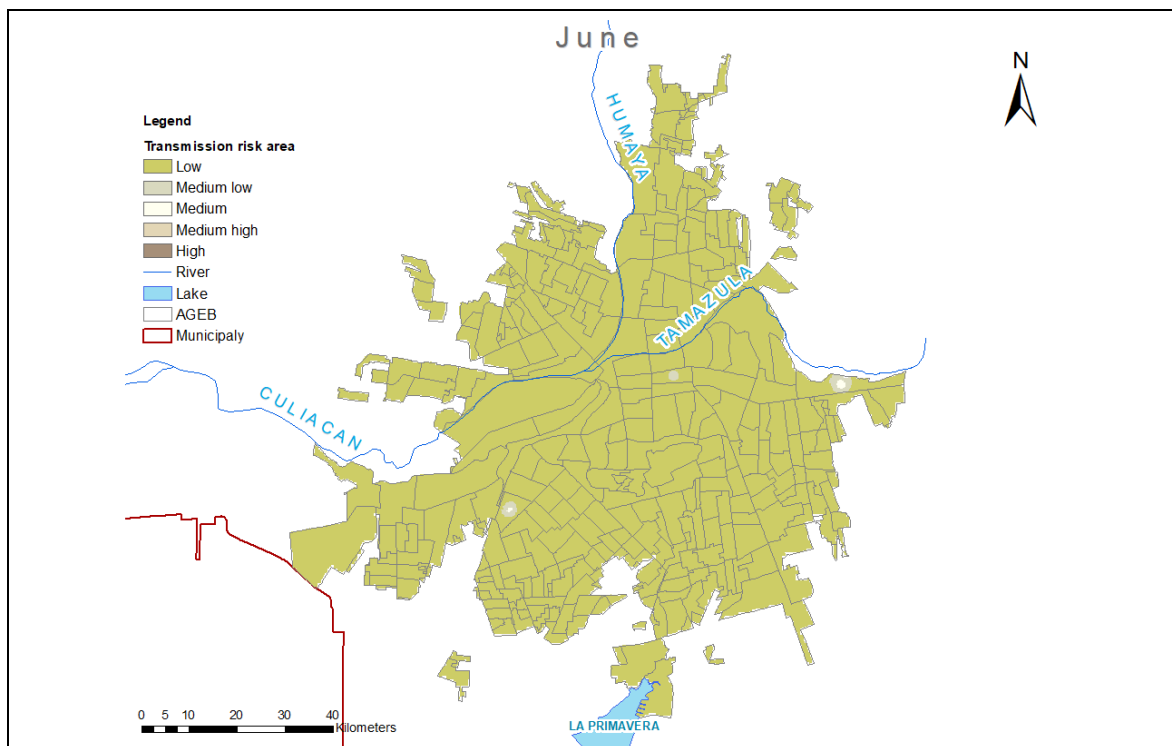


Figure S67. June dengue transmission risk area, Culiacán, Mexico.

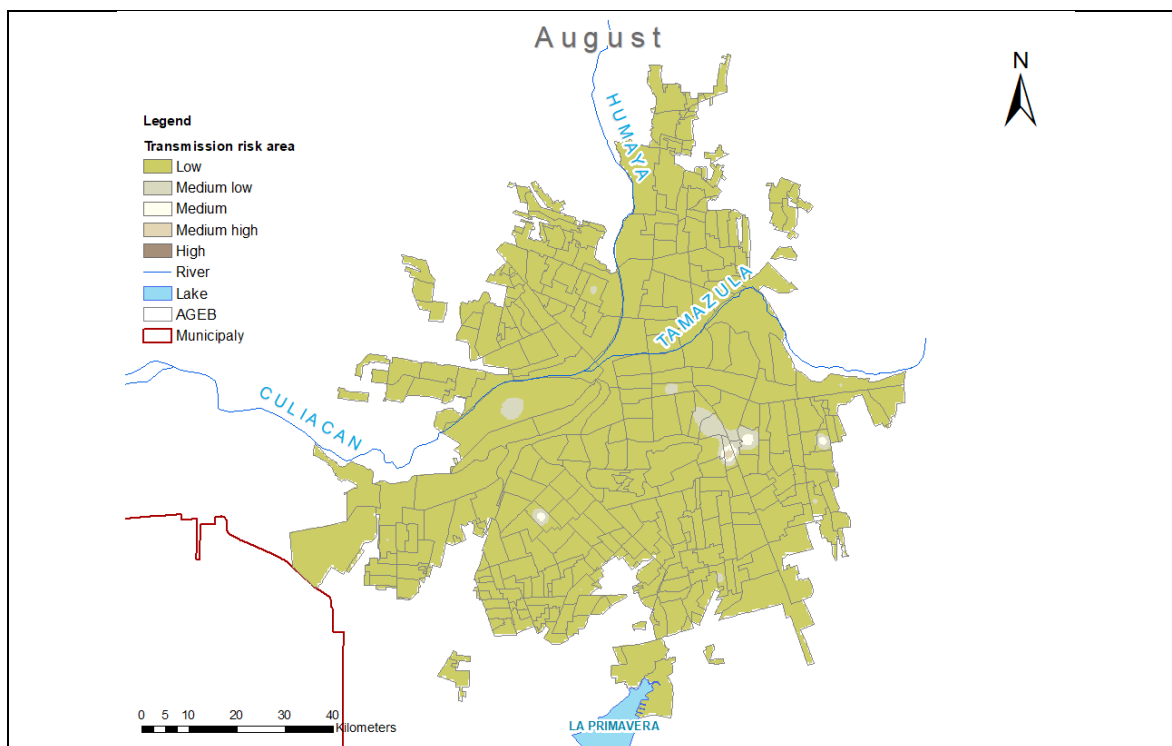


Figure S68. August dengue transmission risk area, Culiacán, Mexico.

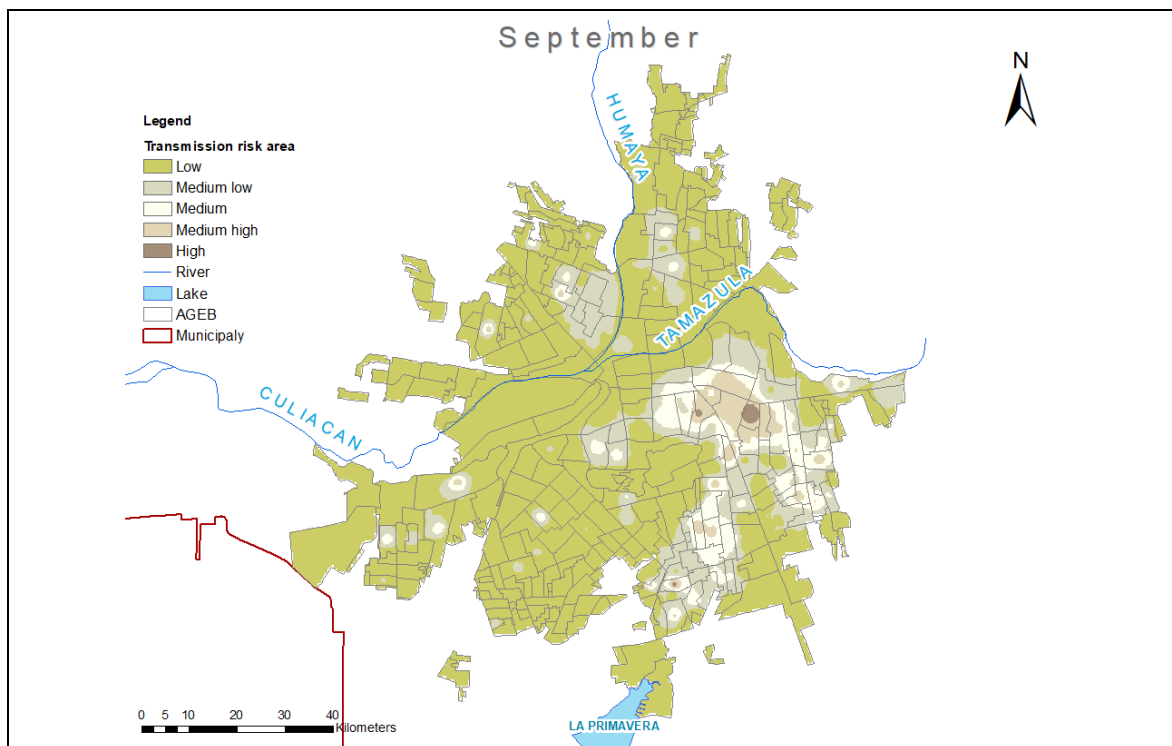


Figure S69. September dengue transmission risk area, Culiacán, Mexico.

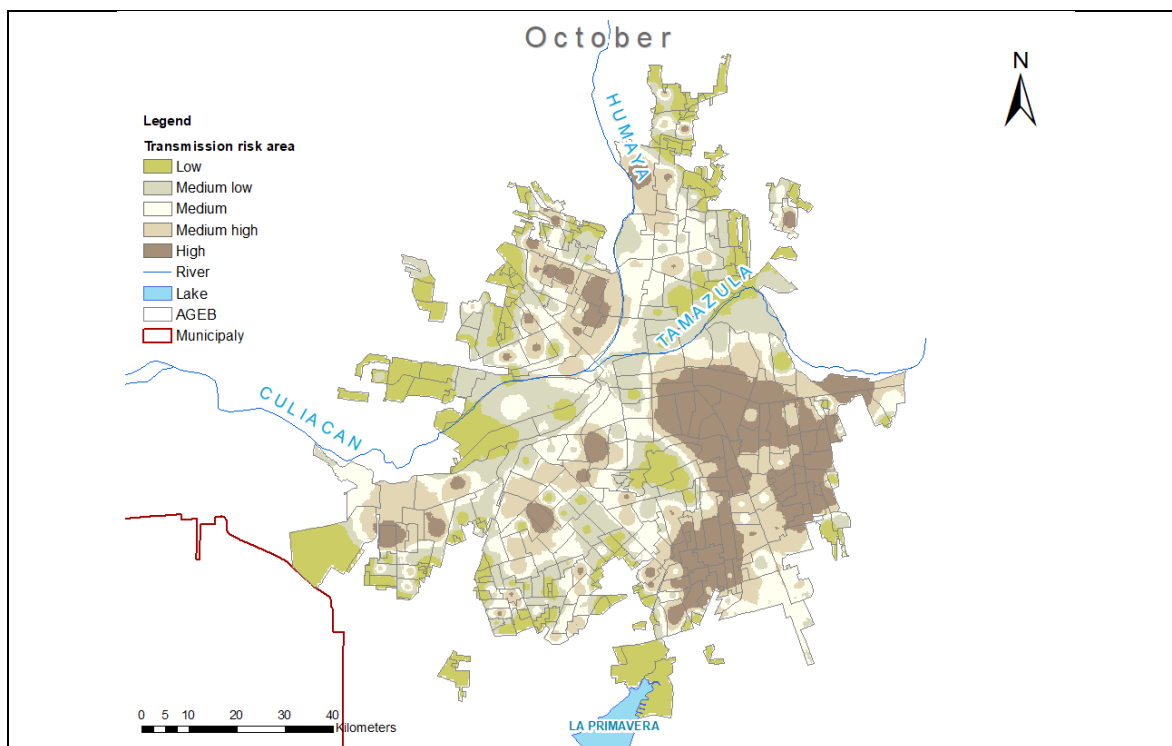


Figure S70. October dengue transmission risk area, Culiacán, Mexico.

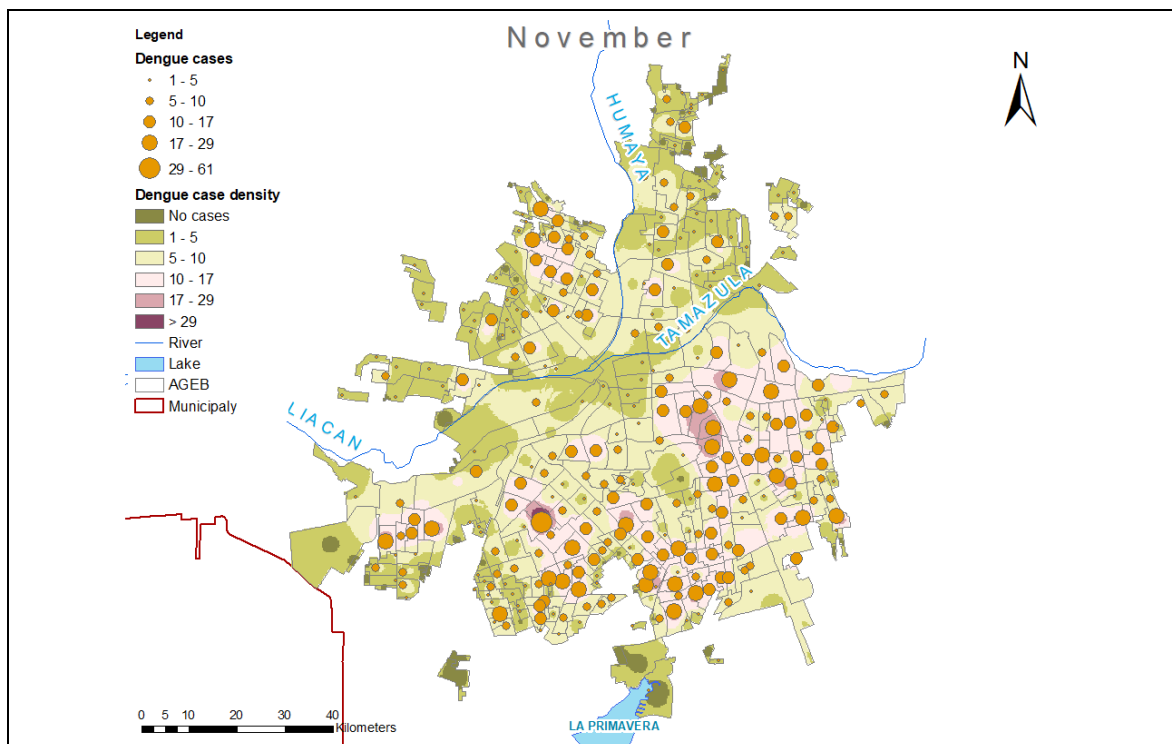


Figure S71. November dengue transmission risk area, Culiacán, Mexico.

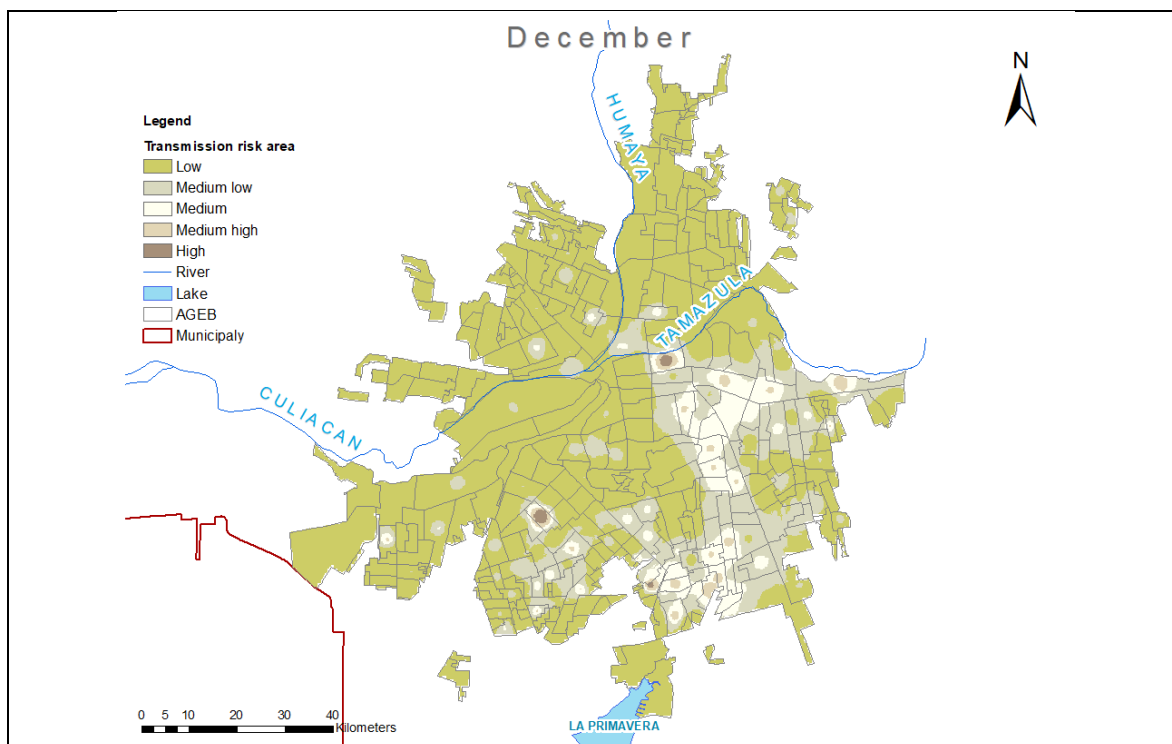


Figure S72. December dengue transmission risk area, Culiacán, Mexico.