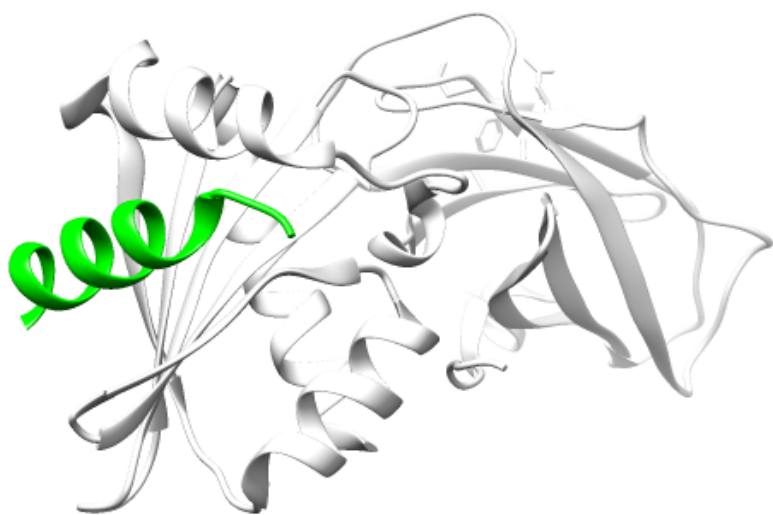


a)



b)

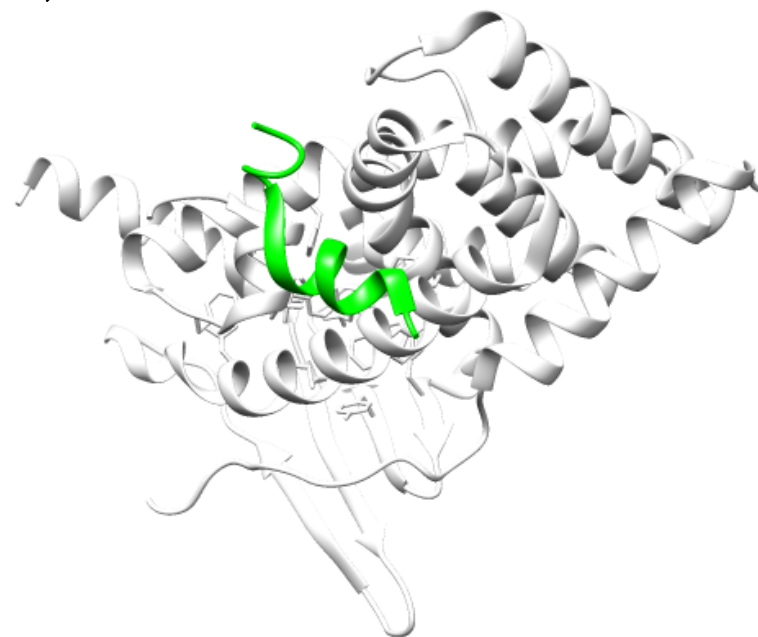


Figure S1. A structural example of a functional fragment found in an experimentally verified IDR. a) The structure of the AP-2 complex binding region (green) of phosphotyrosine-binding domain protein (ARH) binding upon AP-2 beta-subunit (white) (PDB: 2g30). B) A typical ProS structure of nuclear receptor co-activator 1 (green) (IDEAL: IID50084) binding upon nuclear receptor subfamily 1 group I (white).