

Supplementary Material

A High-Throughput Screening of a Natural Products Library for Mitochondria Modulators

Emmanuel Makinde ¹, Linlin Ma ^{1,2}, George D. Mellick ^{1,2} and Yunjiang Feng ^{1,2,*}

¹ Griffith Institute for Drug Discovery, Griffith University, Brisbane, QLD 4111, Australia

² School of Environment and Science, Griffith University, Brisbane QLD 4111, Australia

* Correspondence: y.feng@griffith.edu.au

Table of contents.

Figure S1. HPLC Chromatogram of <i>Ternstroemia sp.</i>	2
Figure S2. HPLC Chromatogram of <i>Alnus sp.</i>	2
Figure S3. HPLC Chromatogram of <i>Balanops sp.</i>	2
Figure S4. HPLC Chromatogram of <i>Anredera sp.</i>	2
Figure S5. HPLC Chromatogram of <i>Cestrum sp.</i>	3
Figure S6. HPLC Chromatogram of <i>Ilex sp.</i>	3
Figure S7. HPLC Chromatogram of <i>Dendrilla sp.</i>	3
Figure S8. HPLC Chromatogram of <i>Balanophora sp.</i>	3
Figure S9. HPLC Chromatogram of <i>Aptos sp.</i>	4
Figure S10. HPLC Chromatogram of <i>Rhaphoxya sp.</i>	4
Figure S11. HPLC Chromatogram of <i>Fucraea sp.</i>	4
Figure S12. MTT assay of fractions at 100, 50 and 25 µg/ml	5
Figure S12 (contd.). MTT assay of fractions at 100, 50 and 25 µg/ml continued	6
Figure S13. Base peak ion chromatogram and full mass spectra of <i>Ternstroemia sp.</i> , fraction 4	7
Figure S14. Base peak ion chromatogram and full mass spectra of <i>Alnus sp.</i> , fraction 4	8
Figure S15. Base peak ion chromatogram and full mass spectra of <i>Anredera sp.</i> , fraction 1	9
Figure S16. Base peak ion chromatogram and full mass spectra of <i>Cestrum sp.</i> , fraction 1.	10
Figure S17. Base peak ion chromatogram and full mass spectra of <i>Dendrilla sp.</i> , fraction 3.	11
Figure S18. Base peak ion chromatogram and full mass spectra of <i>Balanophora sp.</i> , fraction 2	12
Figure S19. Base peak ion chromatogram and full mass spectra of <i>Aptos sp.</i> , fraction 6	13
Figure S20. Base peak ion chromatogram and full mass spectra of <i>Rhaphoxya sp.</i> , fraction 6	14

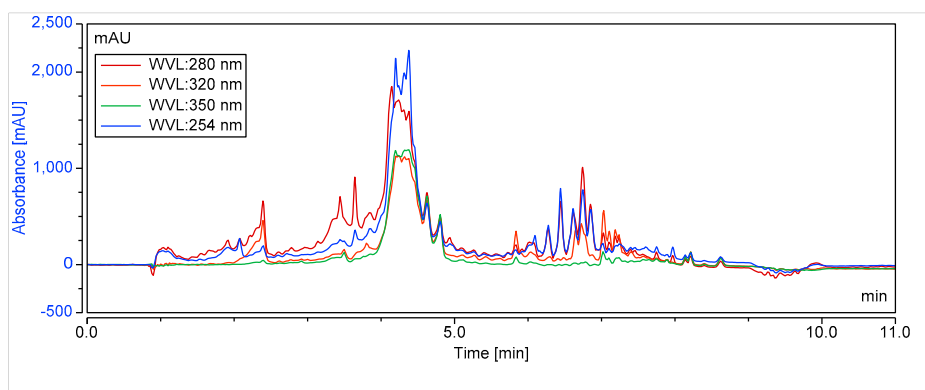


Figure S1. HPLC Chromatogram of *Ternstroemia* sp.

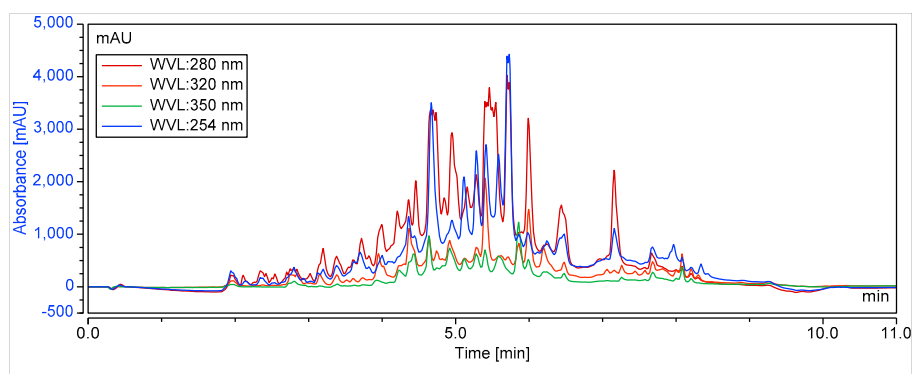


Figure S2. HPLC Chromatogram of *Alnus* sp.

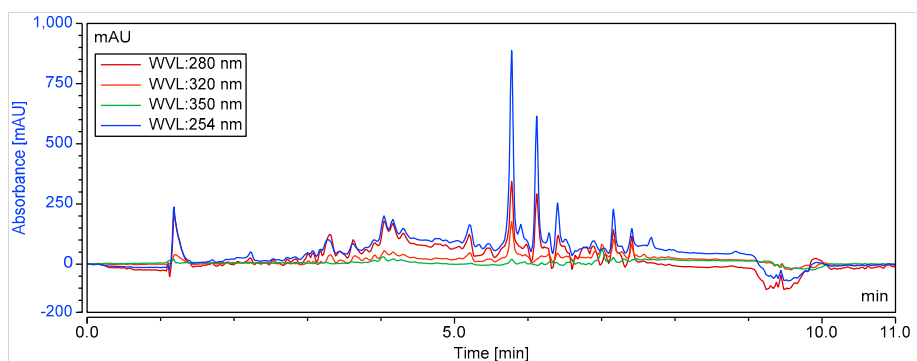


Figure S3. HPLC Chromatogram of *Balanops* sp.

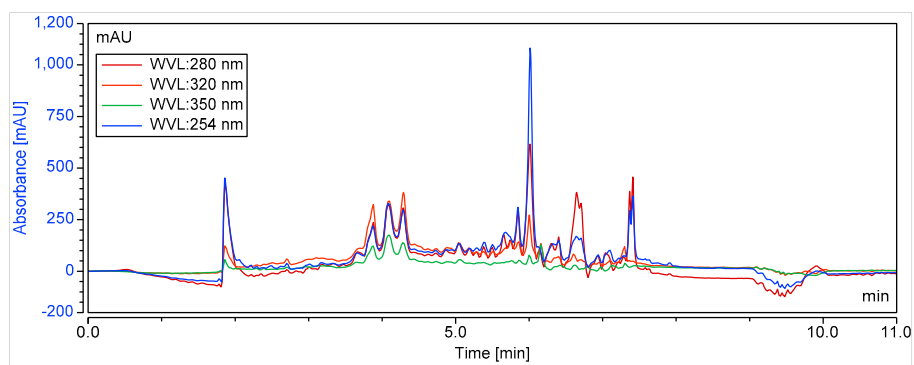


Figure S4. HPLC Chromatogram of *Anredera* sp.

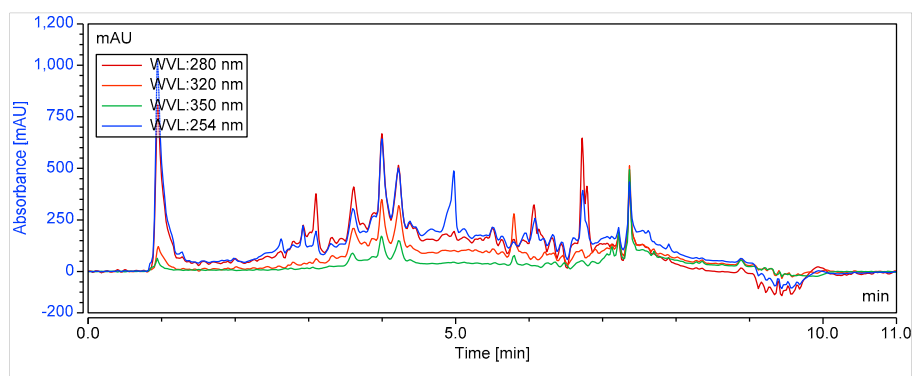


Figure S5. HPLC Chromatogram of *Cestrum sp.*

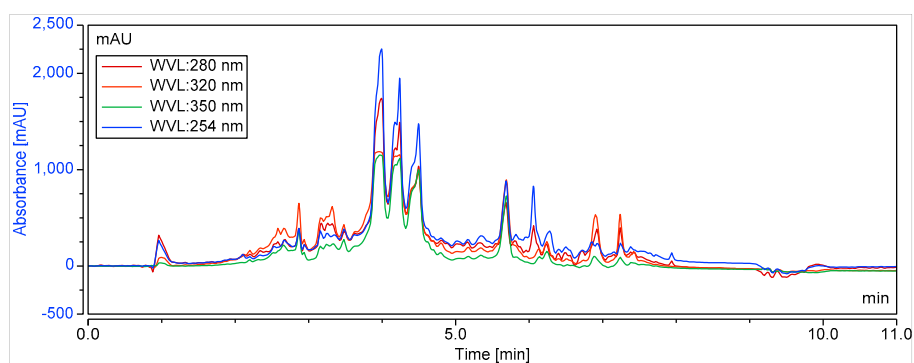


Figure S6. HPLC Chromatogram of *Ilex sp.*

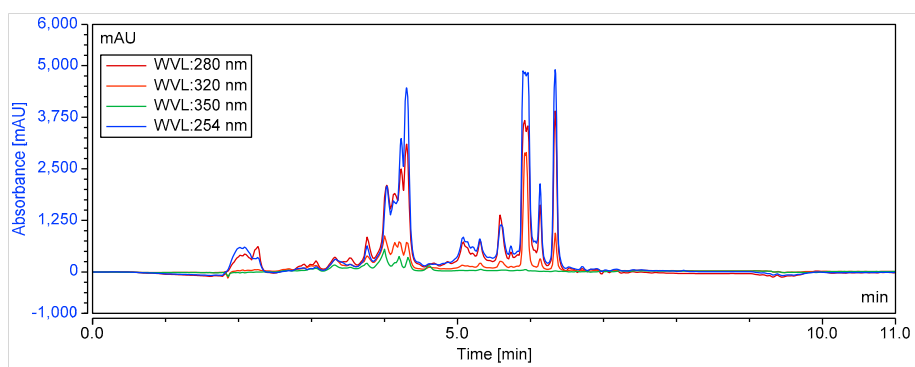


Figure S7. HPLC Chromatogram of *Dendrilla sp.*

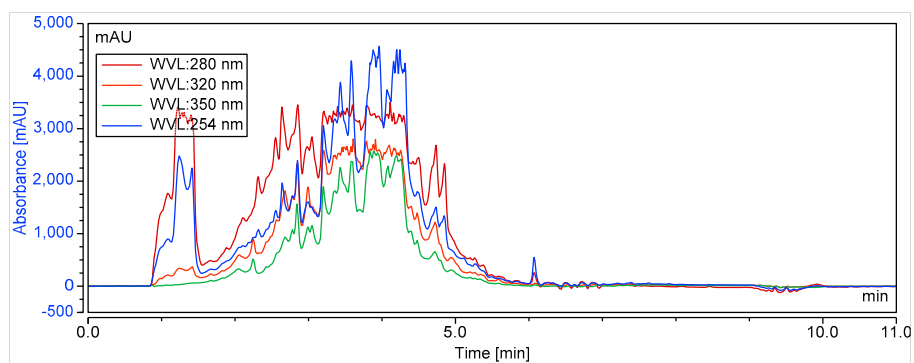


Figure S8. HPLC Chromatogram of *Balanophora sp.*

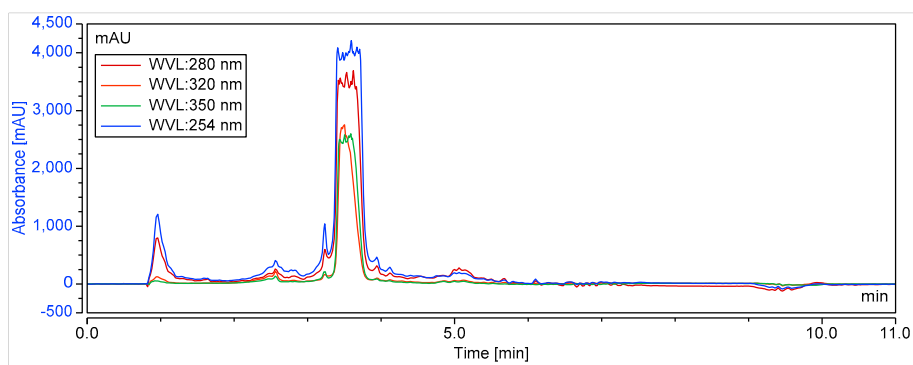


Figure S9. HPLC Chromatogram of *Aptos sp.*

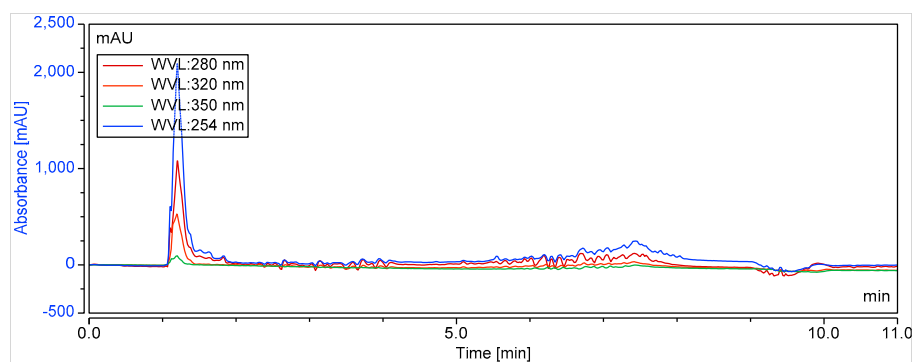


Figure S10. HPLC Chromatogram of *Rhaphoxya sp.*

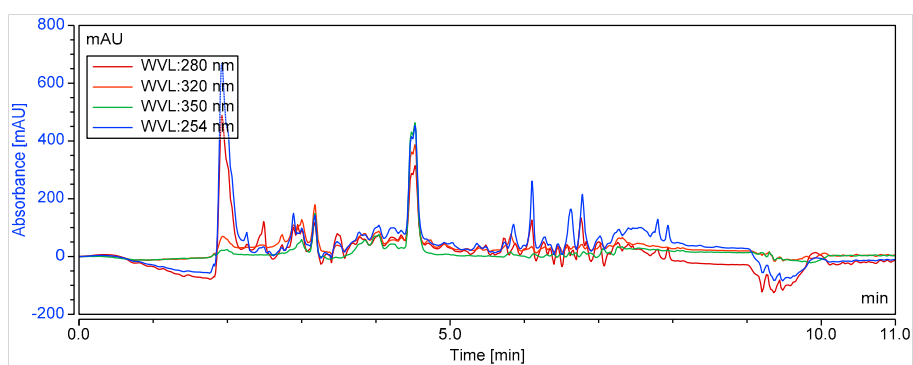


Figure S11. HPLC Chromatogram of *Fucraea sp.*

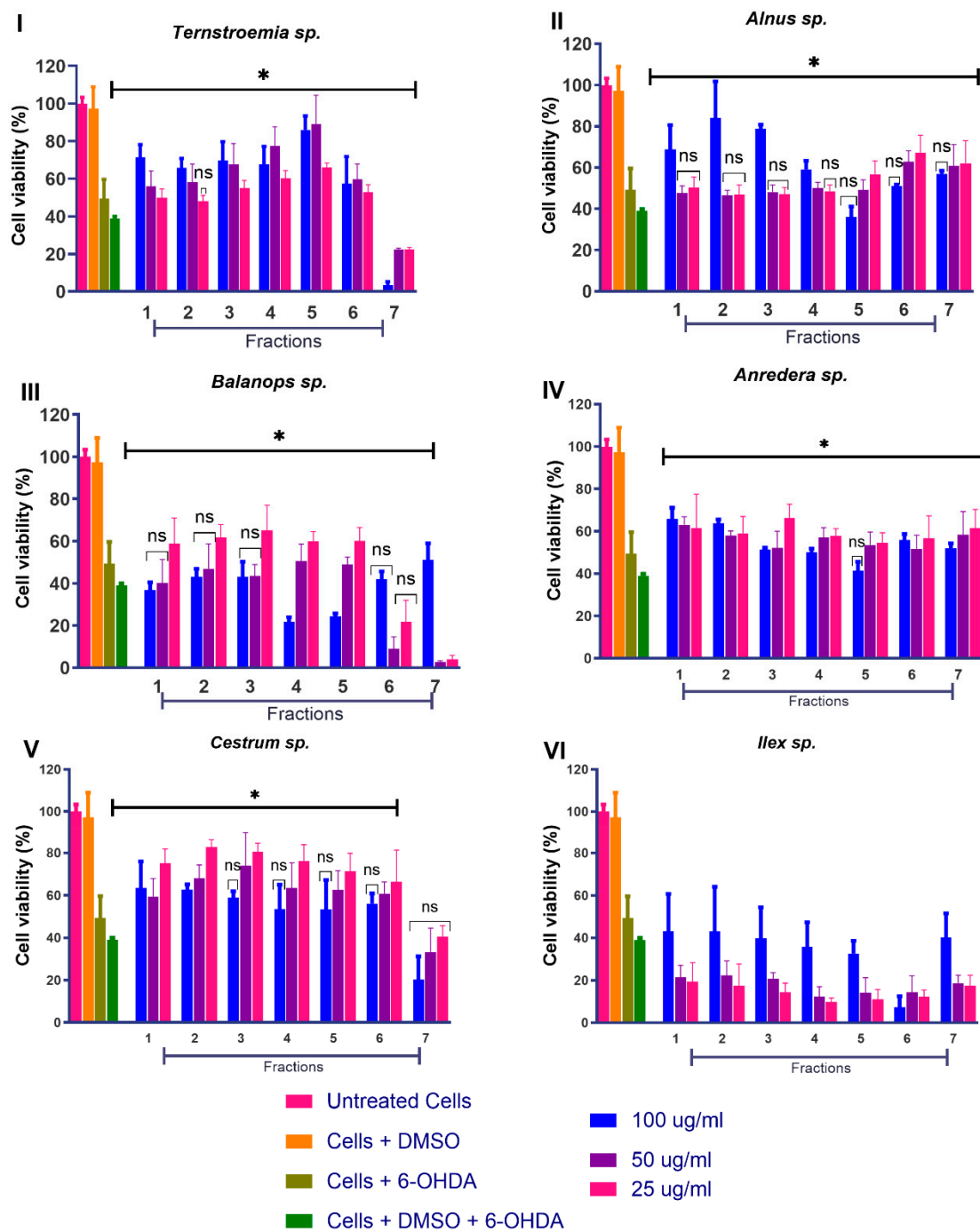


Figure S12. MTT assay of fractions at 100, 50 and 25 µg/ml

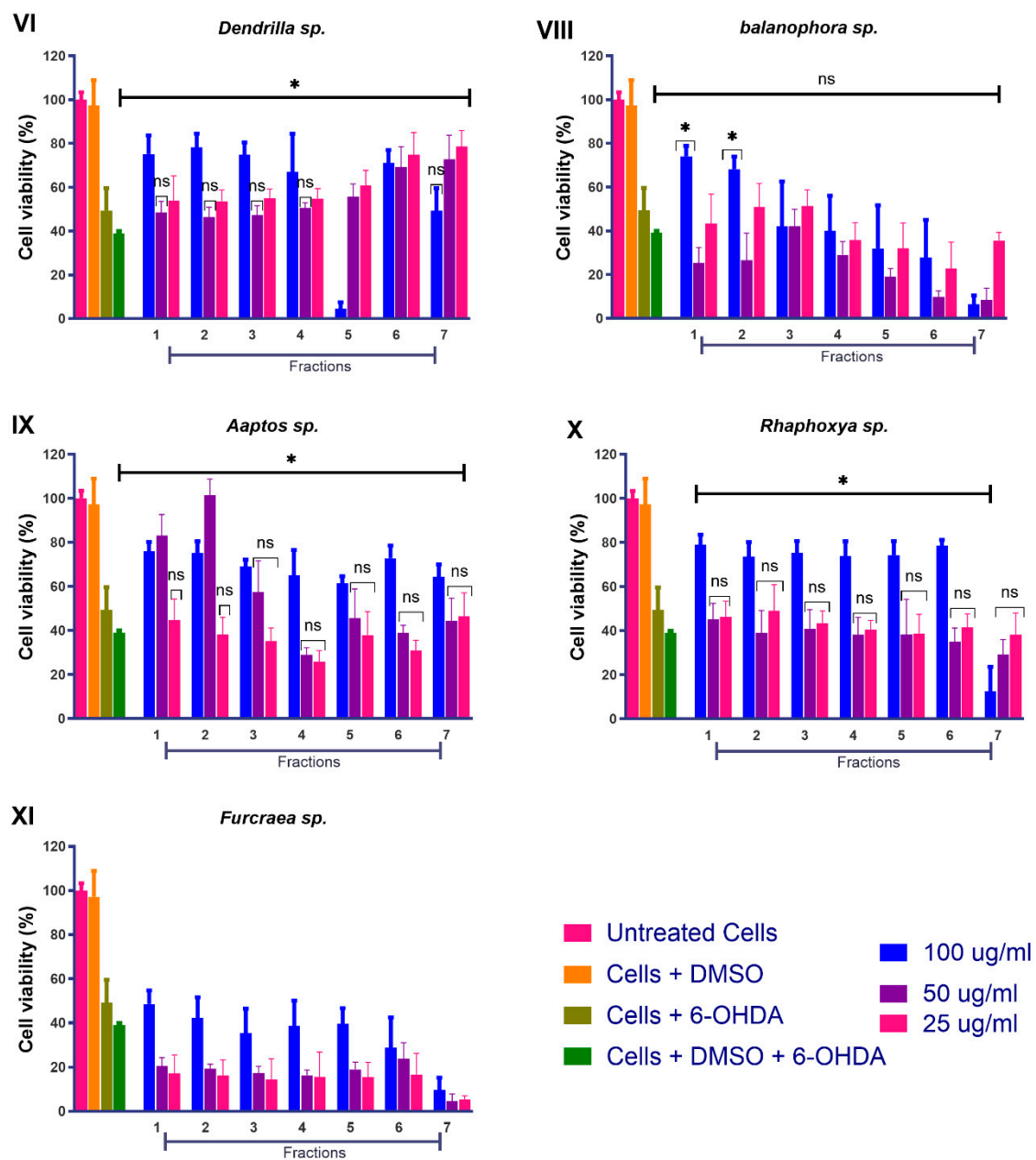


Figure S12 (contd). MTT assay of fractions at 100, 50 and 25 $\mu\text{g/ml}$.

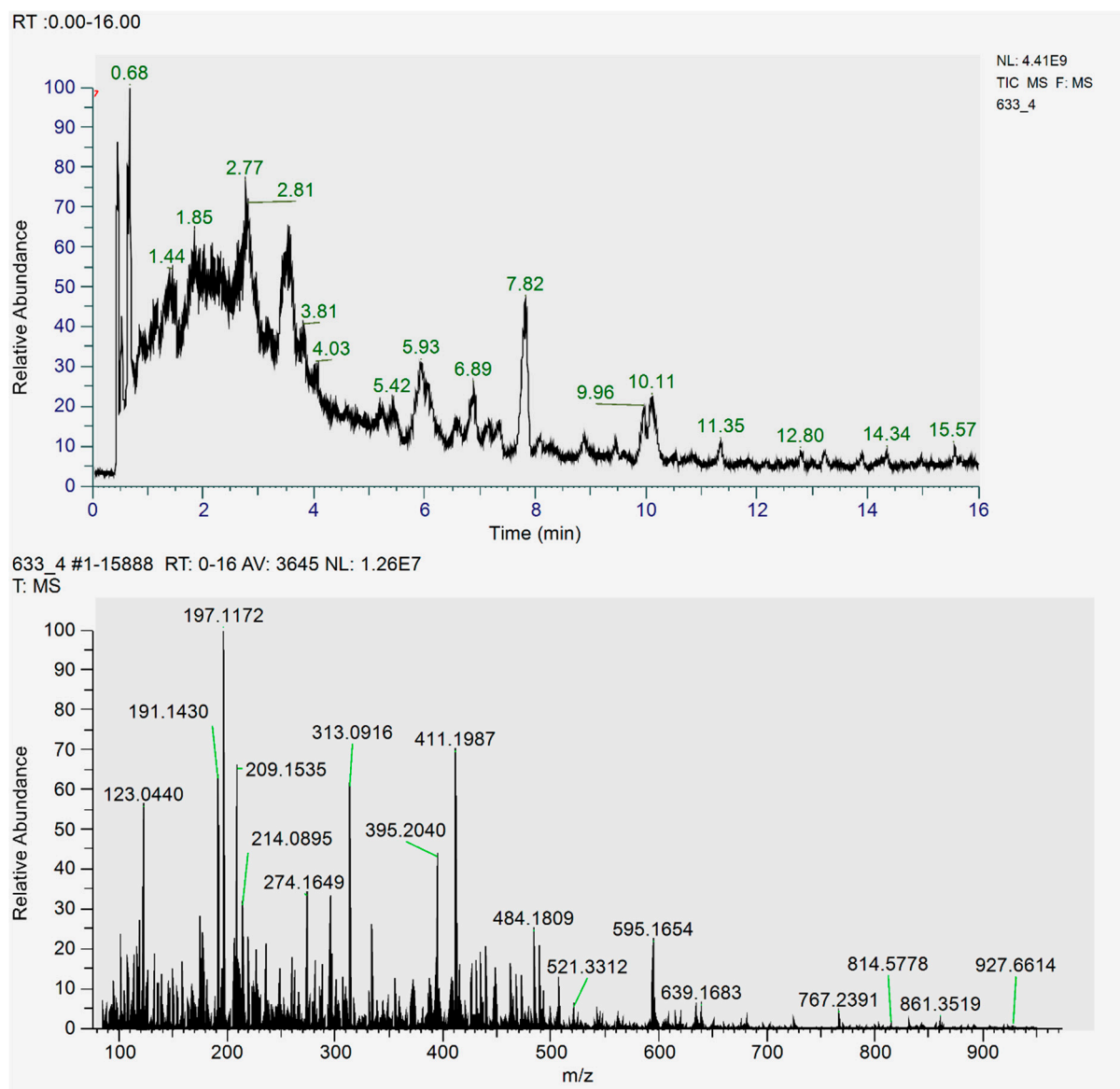


Figure S13. Base peak ion chromatogram and full mass spectra of *Ternstroemia* sp., fraction 4.

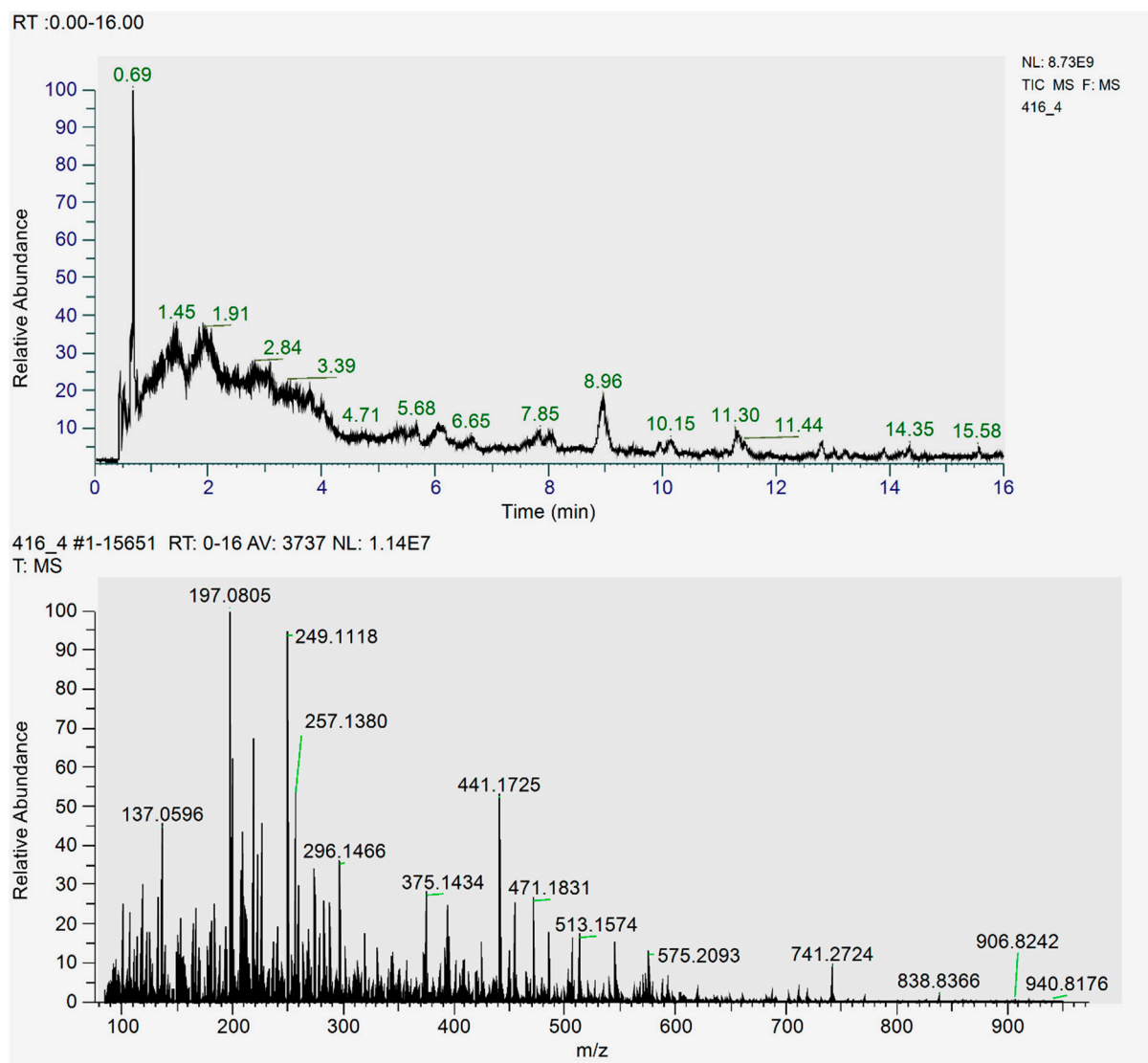


Figure S14. Base peak ion chromatogram and full mass spectra of *Alnus sp.*, fraction 4.

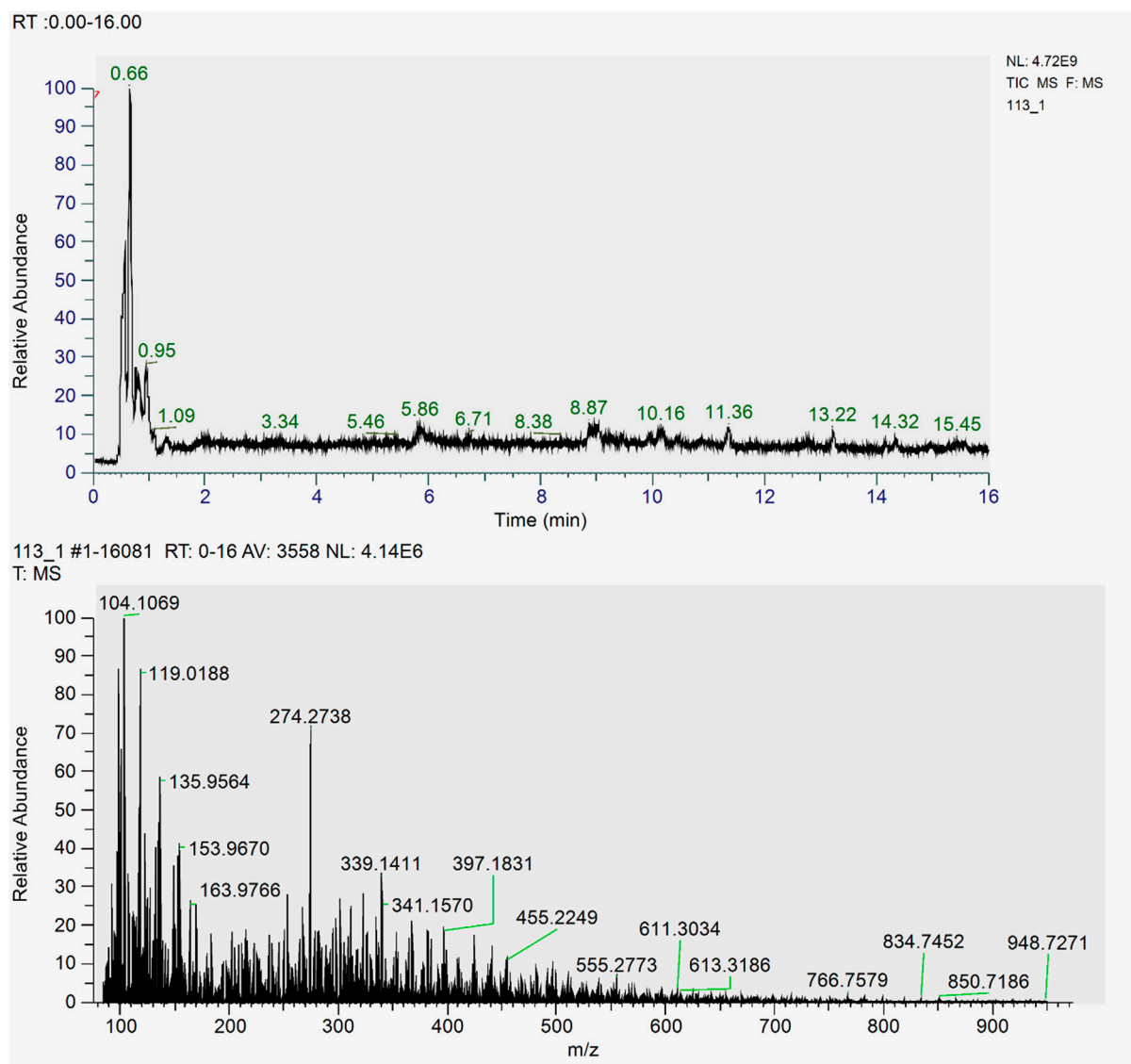


Figure S15. Base peak ion chromatogram and full mass spectra of *Anredera sp.*, fraction 1.

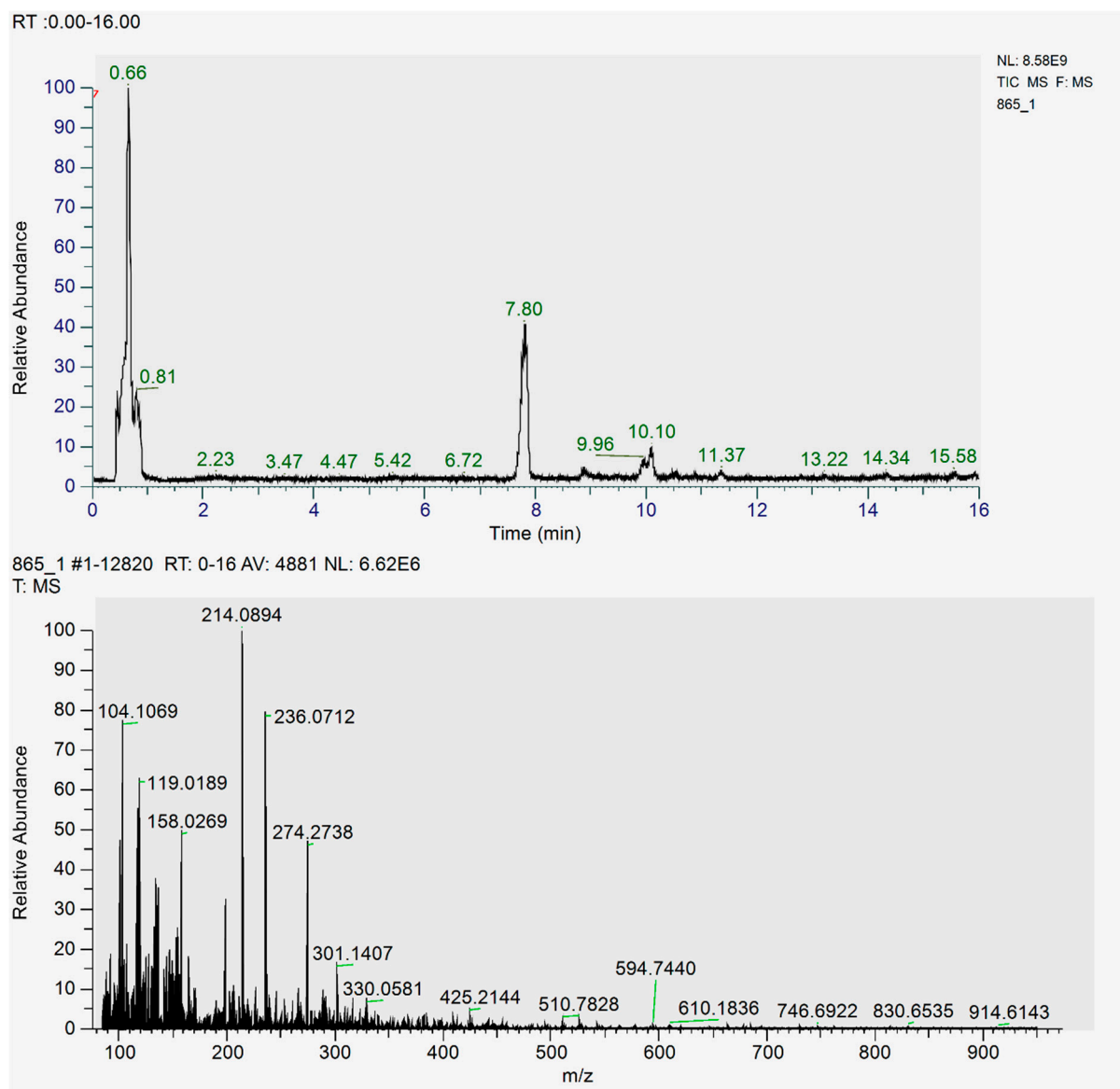


Figure S16. Base peak ion chromatogram and full mass spectra of *Cestrum sp.*, fraction 1.

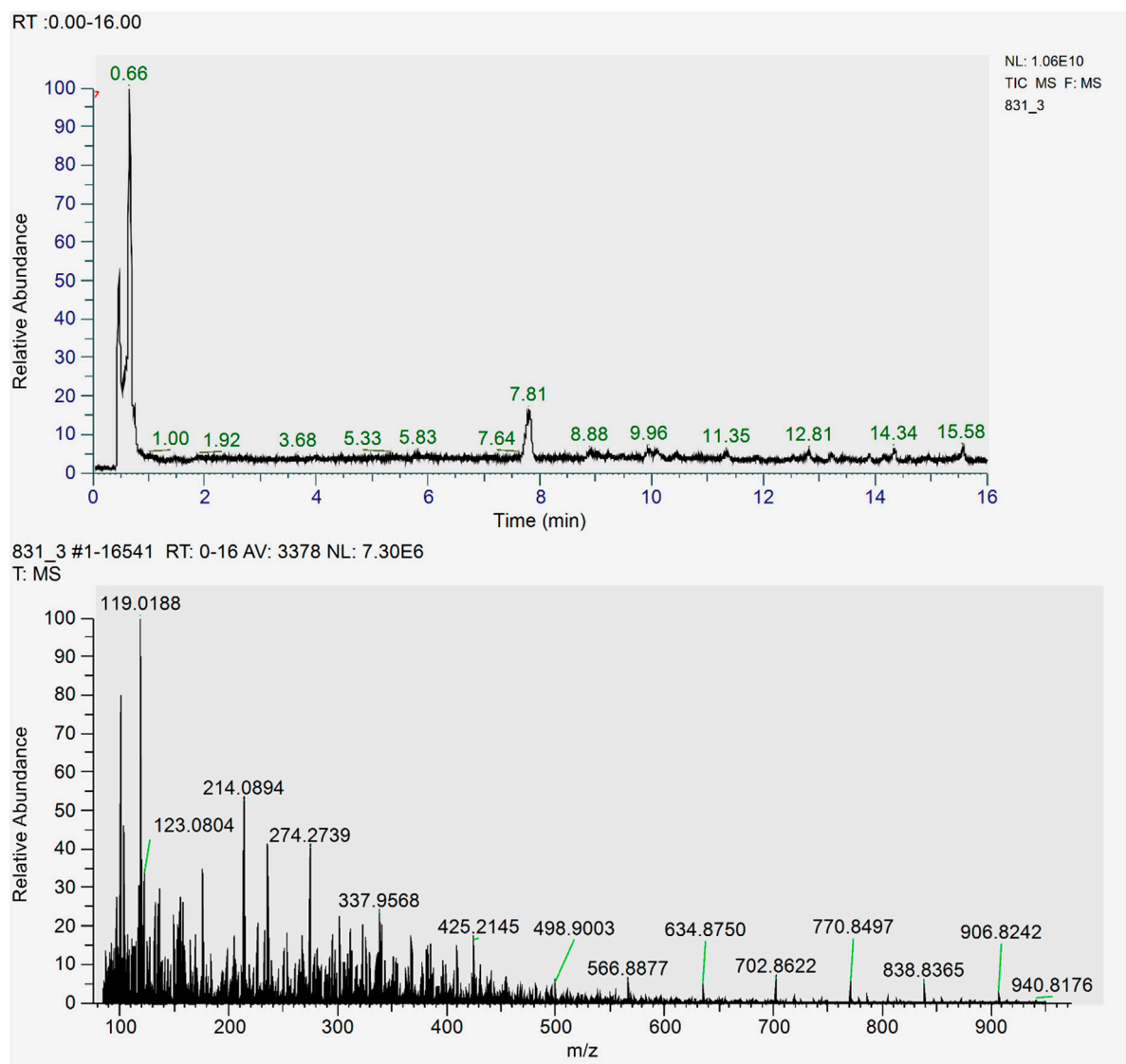


Figure S17. Base peak ion chromatogram and full mass spectra of *Dendrilla sp.*, fraction 3.

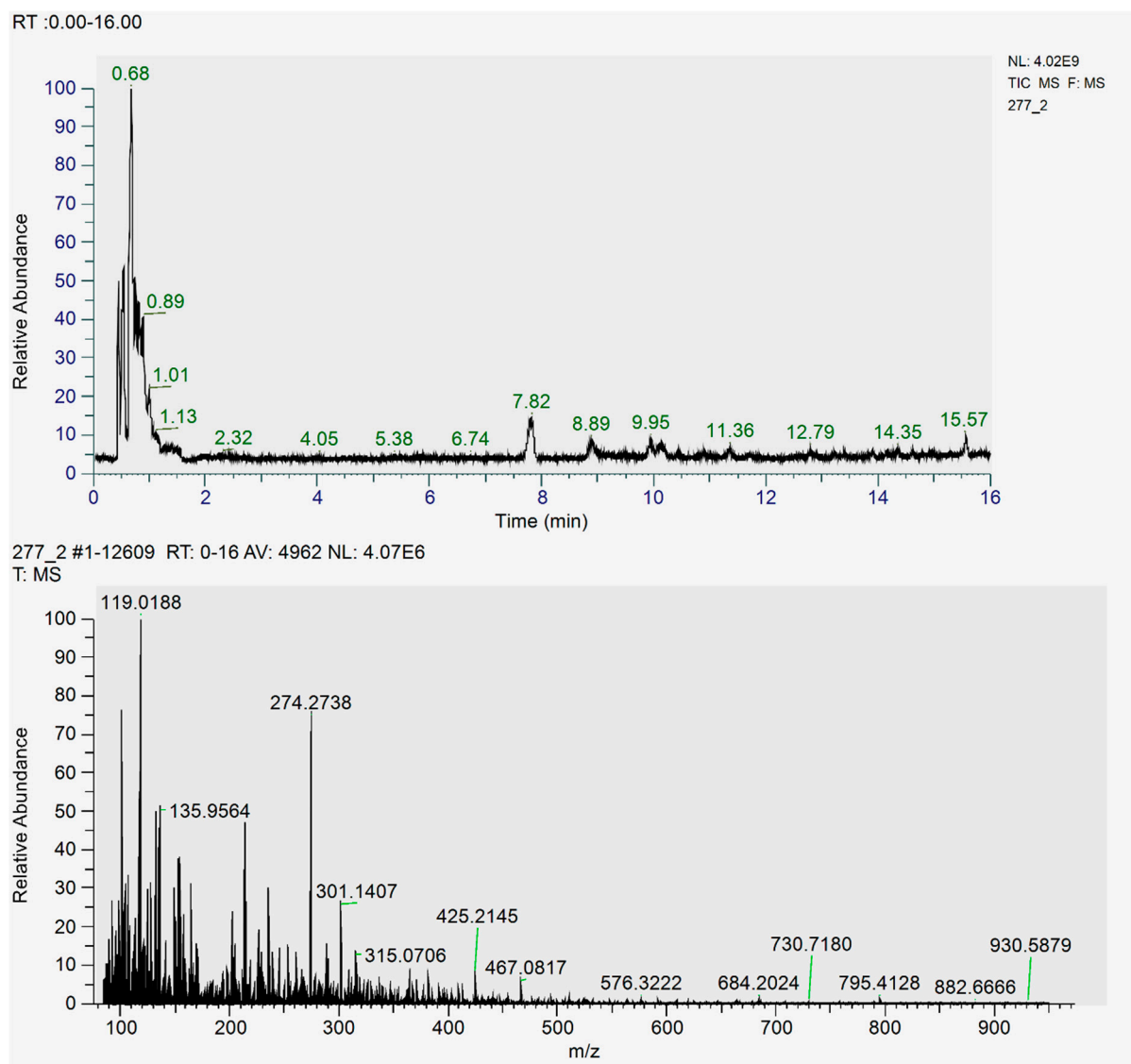


Figure S18. Base peak ion chromatogram and full mass spectra of *Balanophora* sp., fraction 2.

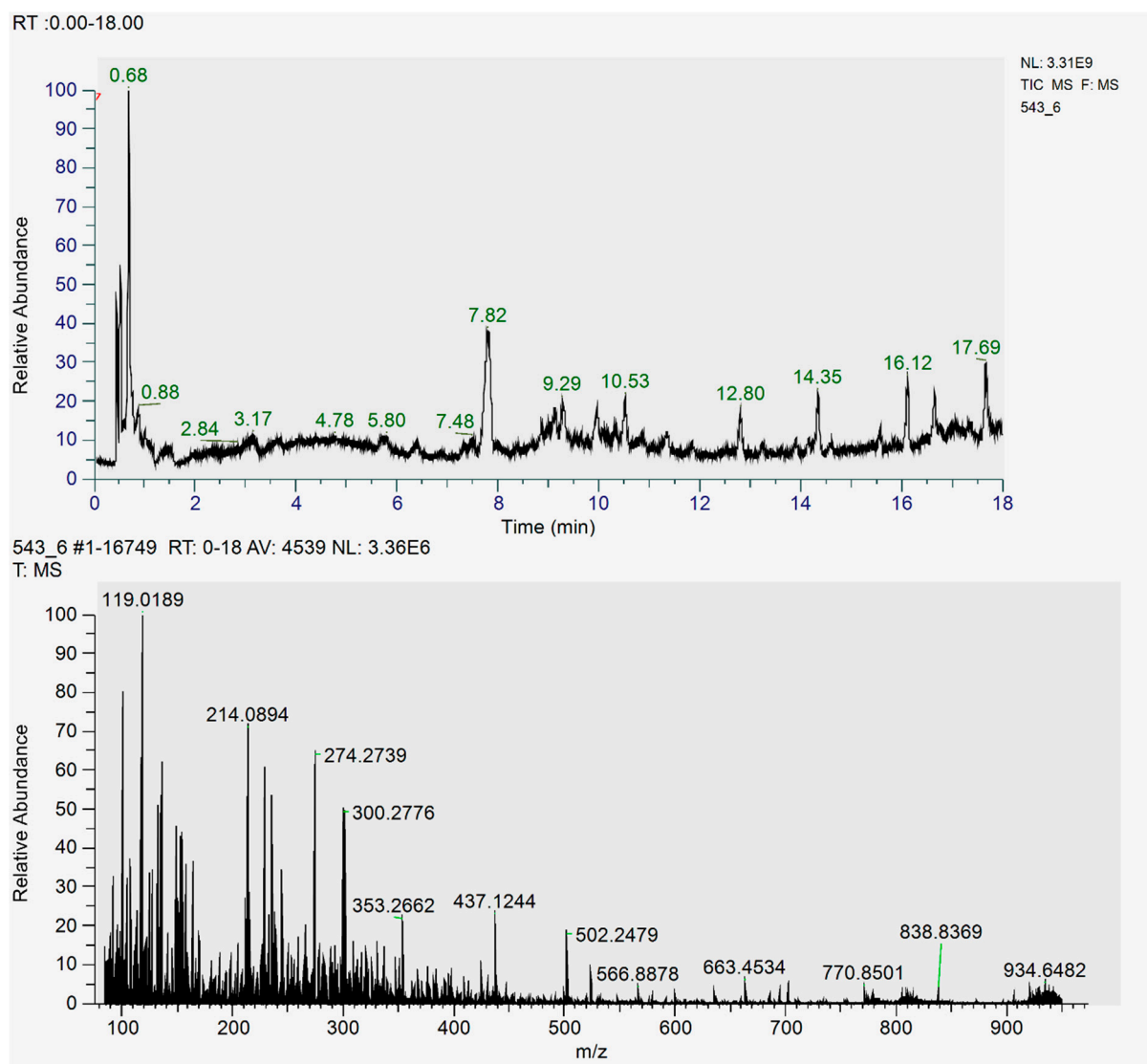


Figure S19. Base peak ion chromatogram and full mass spectra of *Aptos sp.*, fraction 6.

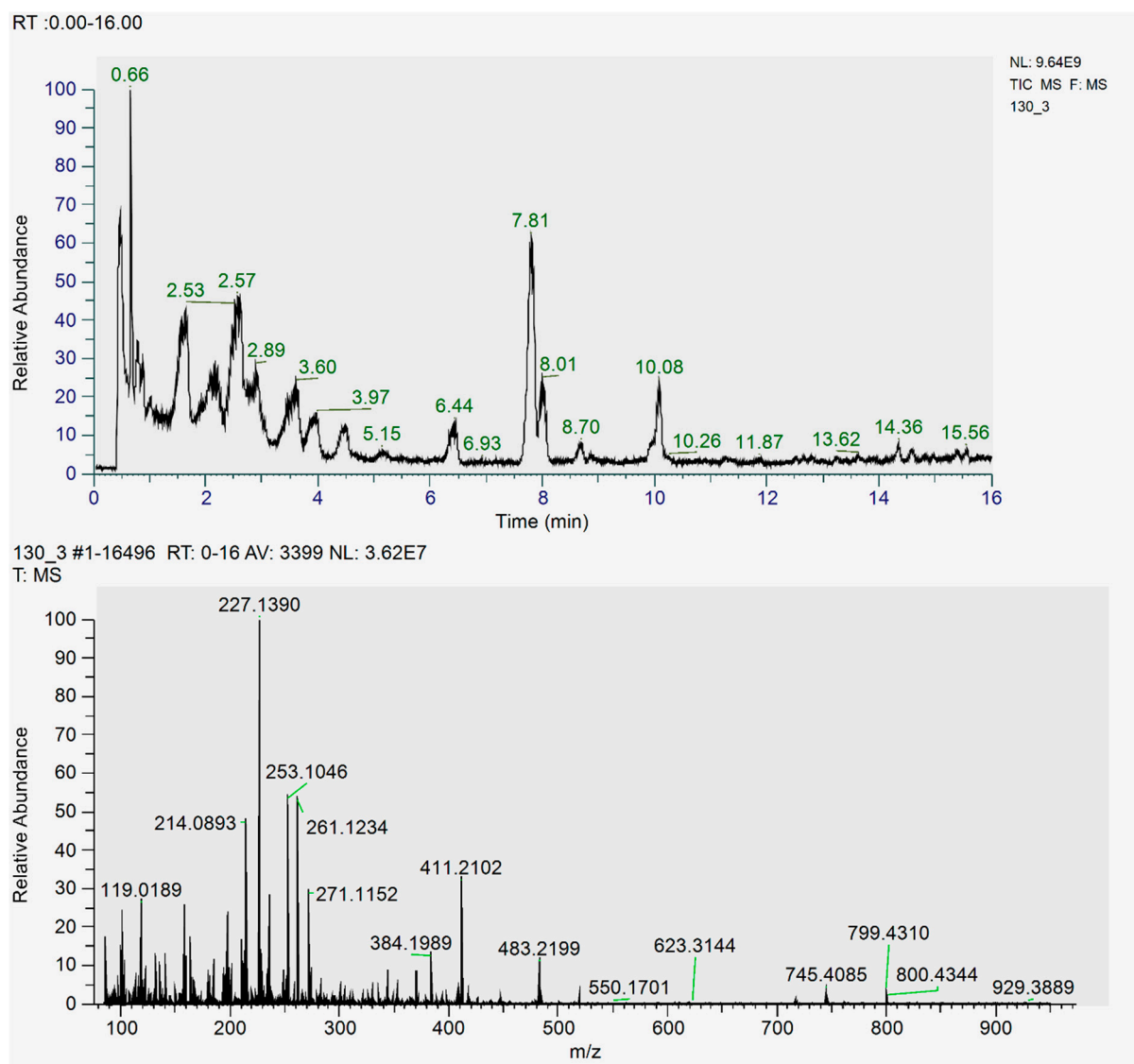


Figure S20. Base peak ion chromatogram and full mass spectra of *Rhaphoxya sp.*, fraction 6.