

Exploring the potential of sulfur moieties in compounds inhibiting steroidogenesis

Tomasz M. Wróbel, Katyayani Sharma, Iole Mannella, Simonetta Oliaro-Bosso, Patrycja Nieckarz, Therina du Toit, Clarissa Daniela Voegel, Maria Natalia Rojas Velazquez, Jibira Yakubu, Anna Matveeva, Søren Therkelsen, Flemming Steen Jørgensen, Amit V Pandey, Agnese C. Pippione, Marco L. Lolli, Donatella Boschi and Fredrik Björklund

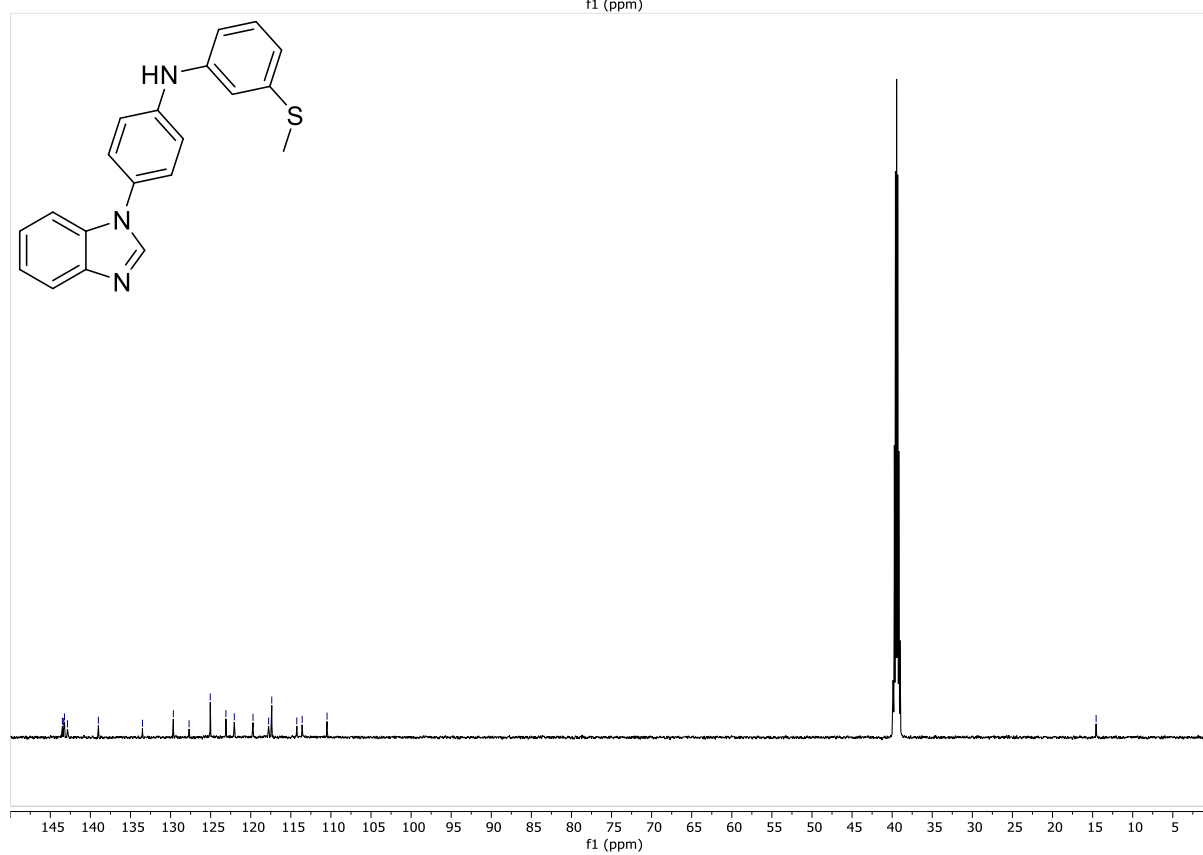
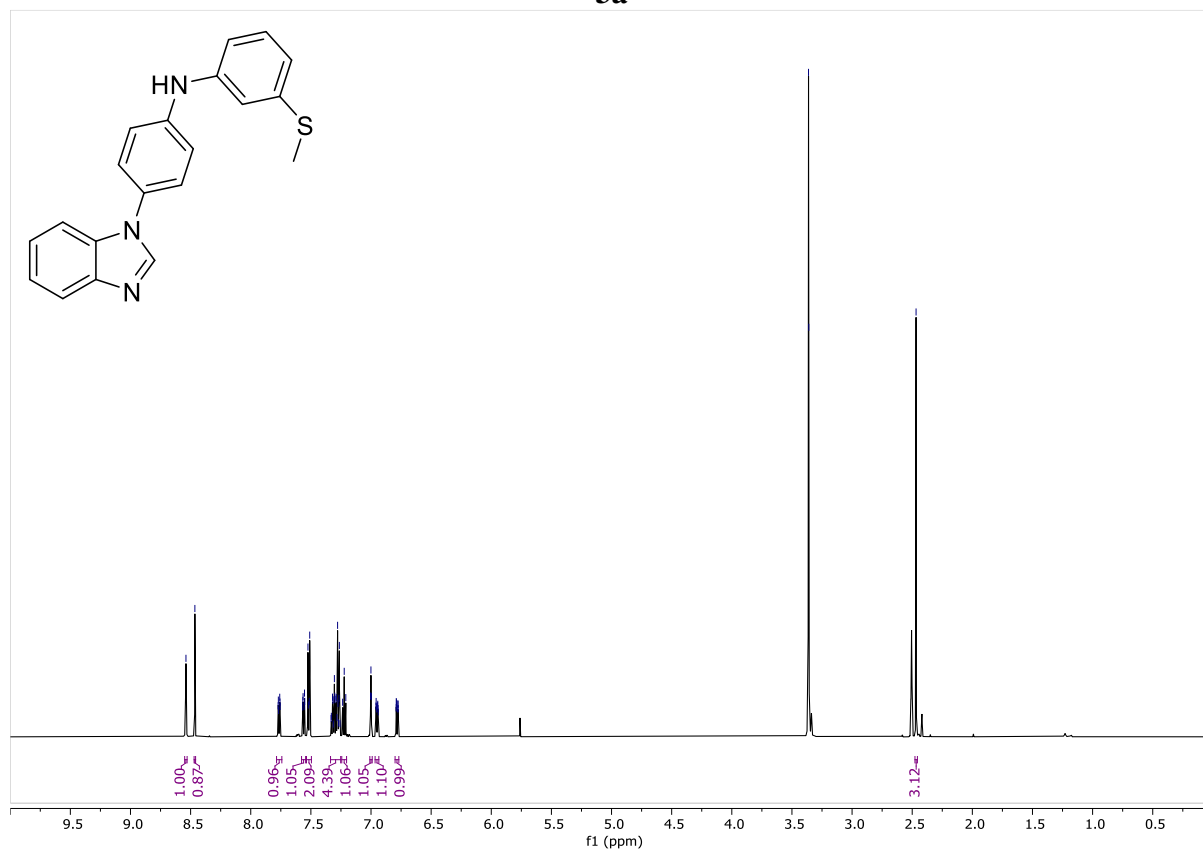
SUPPLEMENTARY INFORMATION

Contents

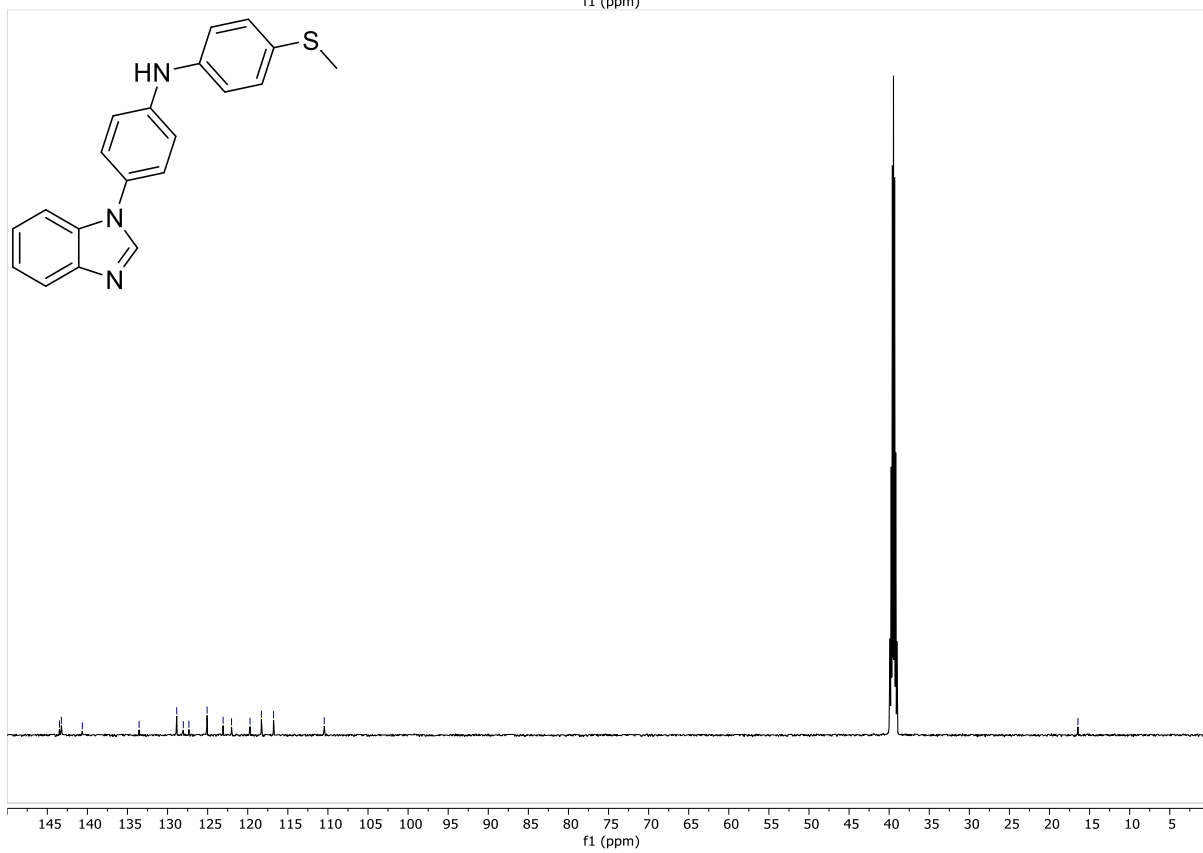
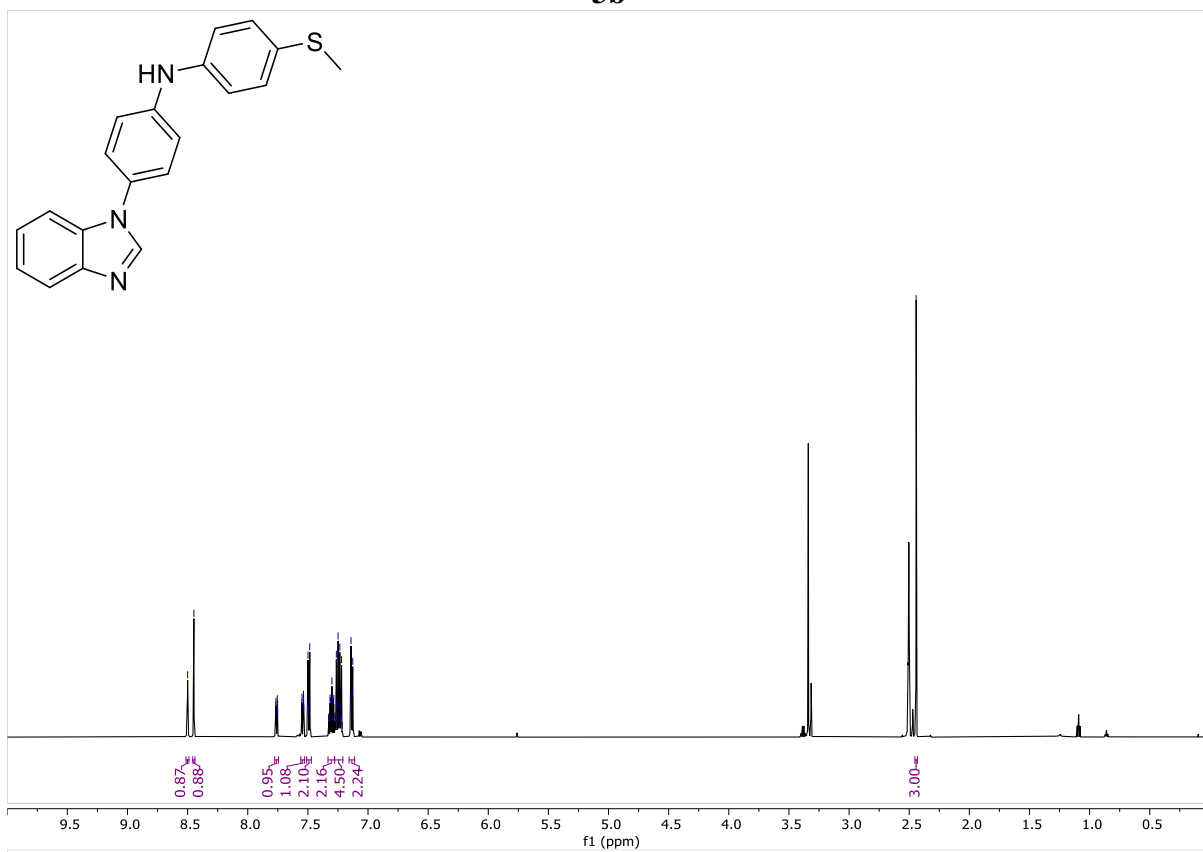
NMR data.....	2
MS data	10
HPLC data.....	14

NMR data

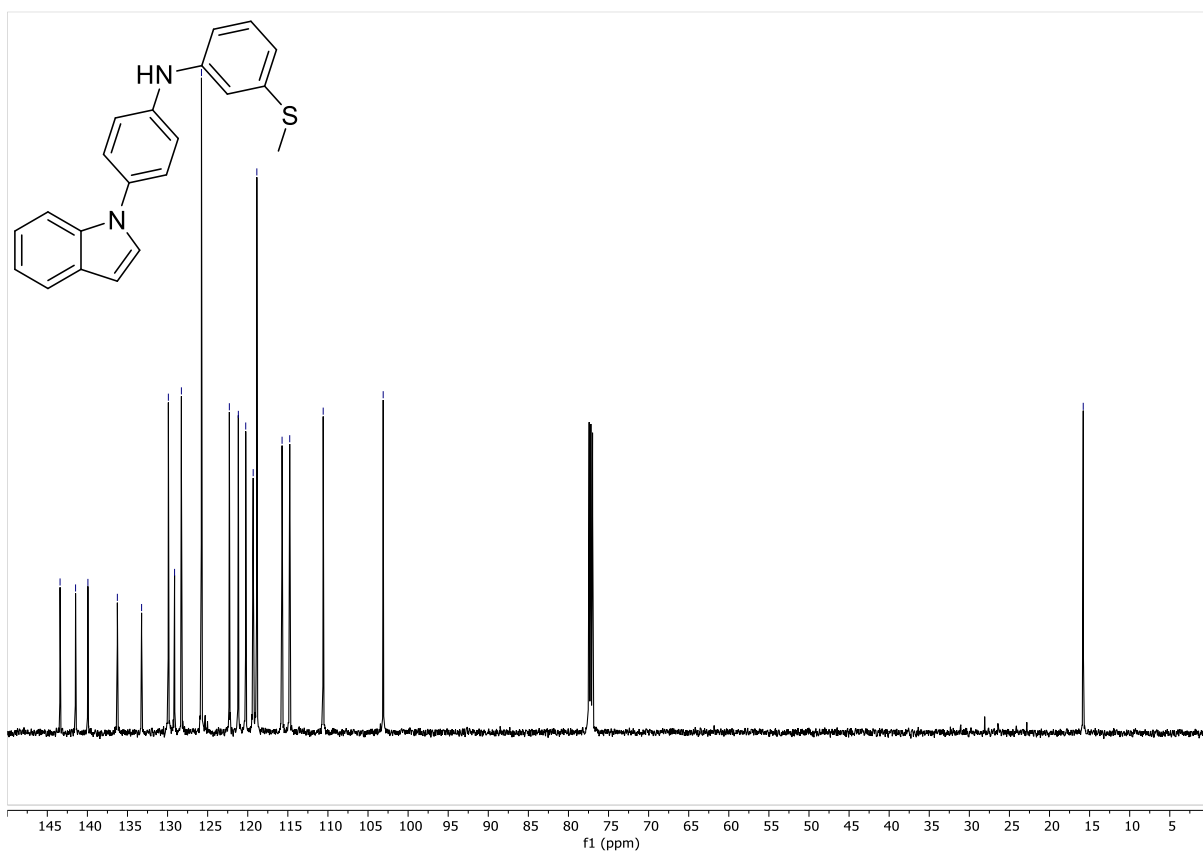
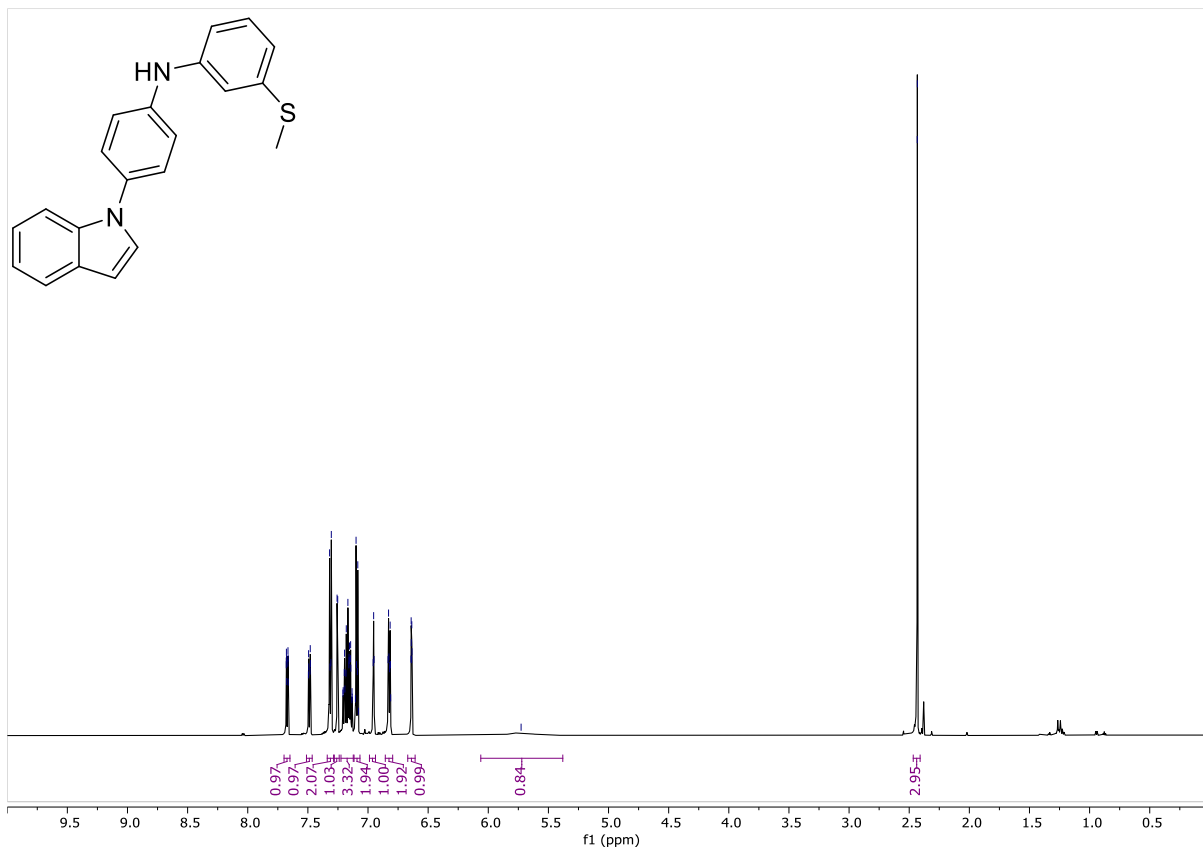
3a



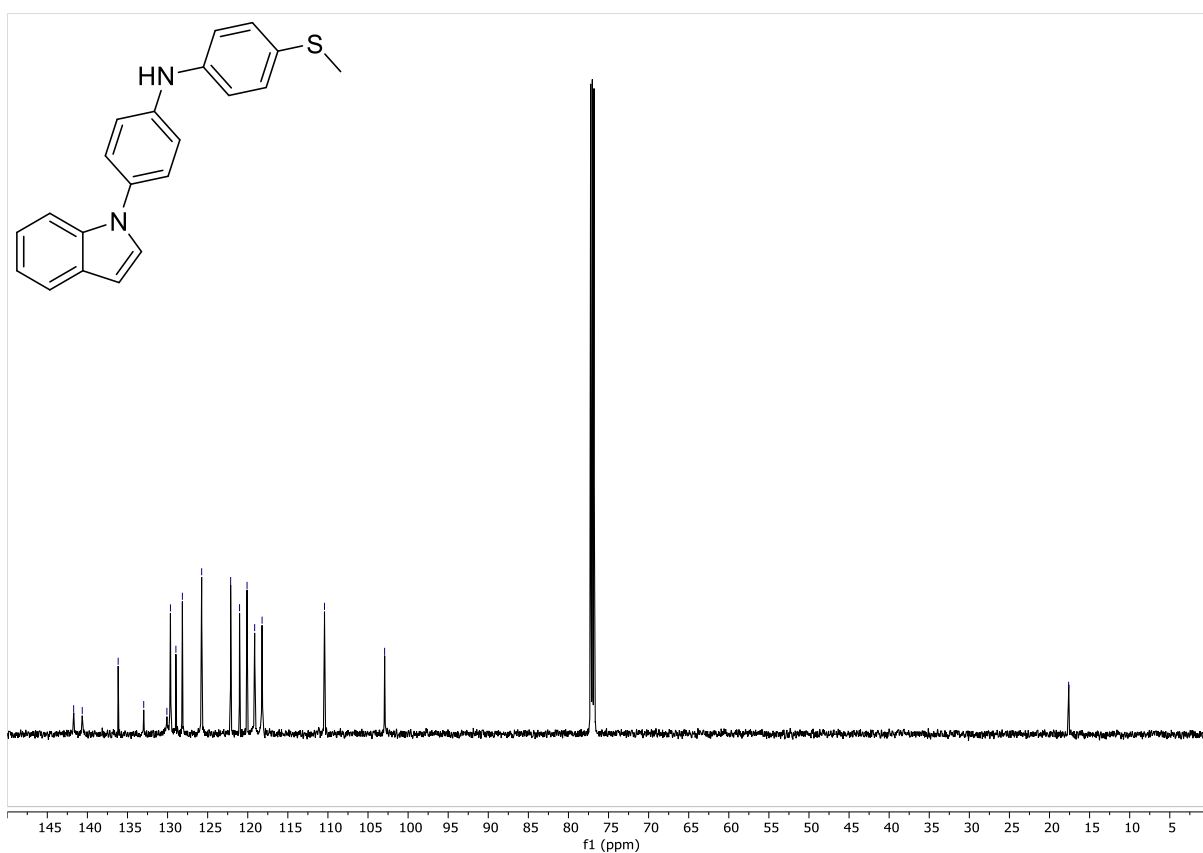
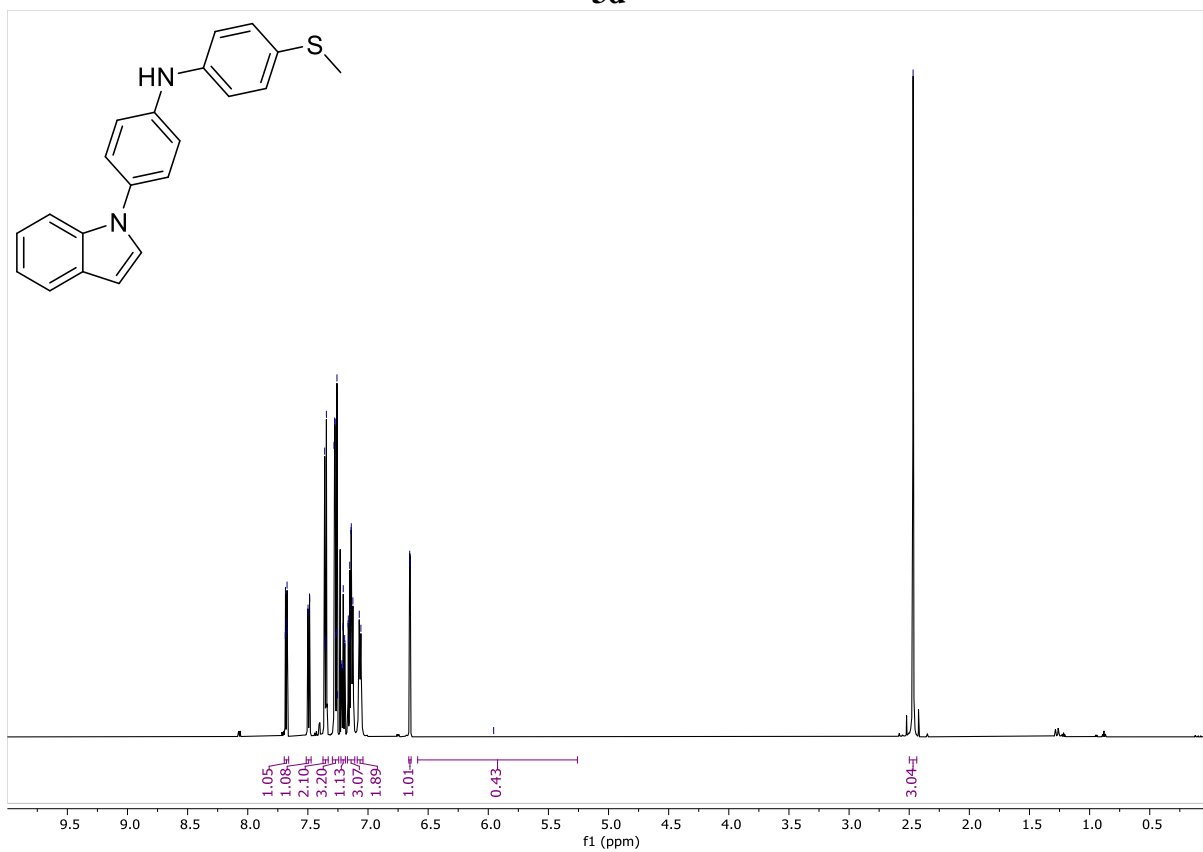
3b



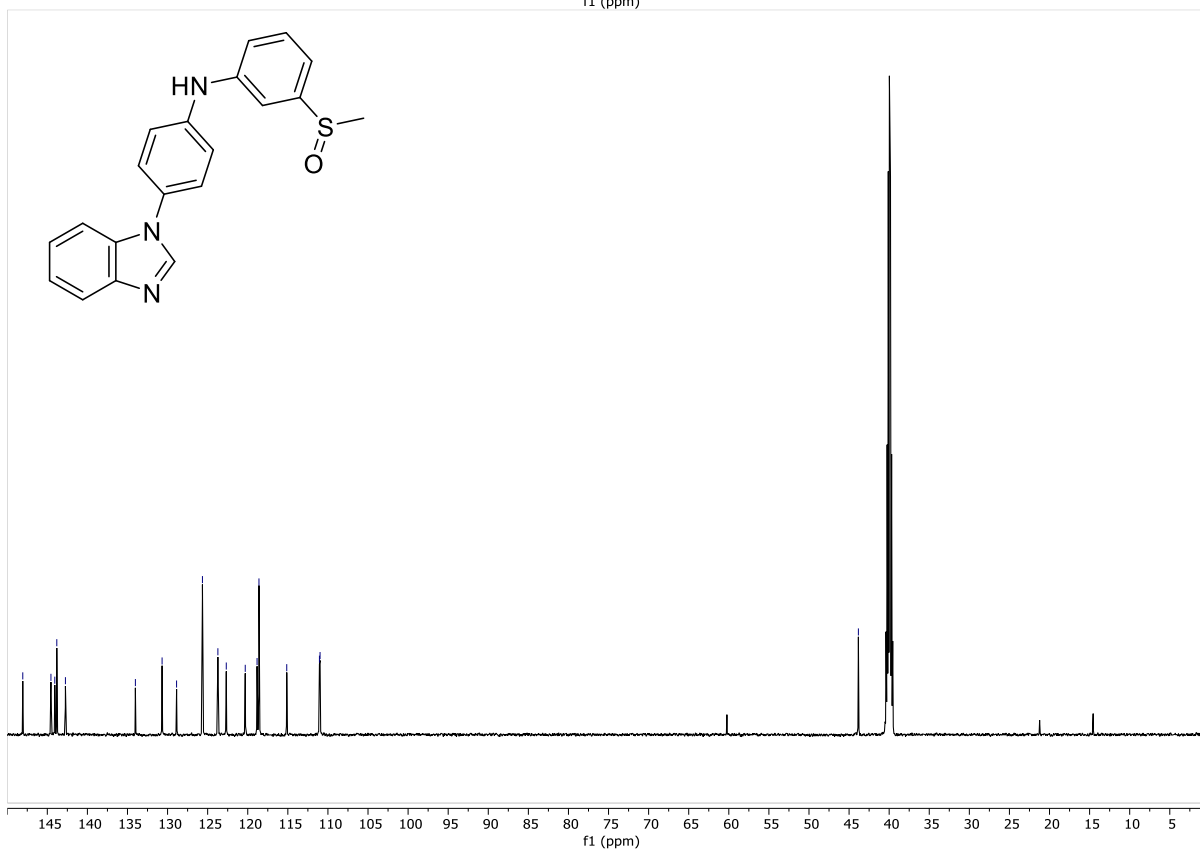
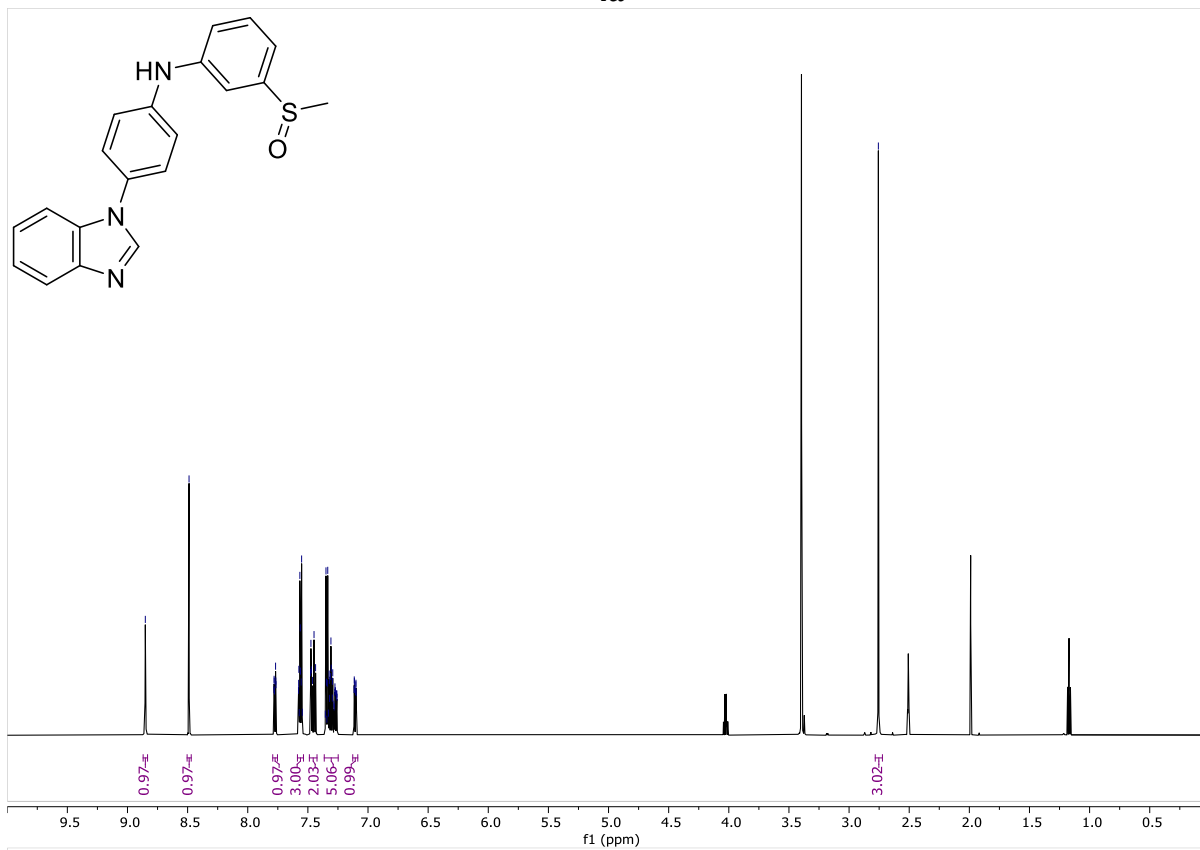
3c



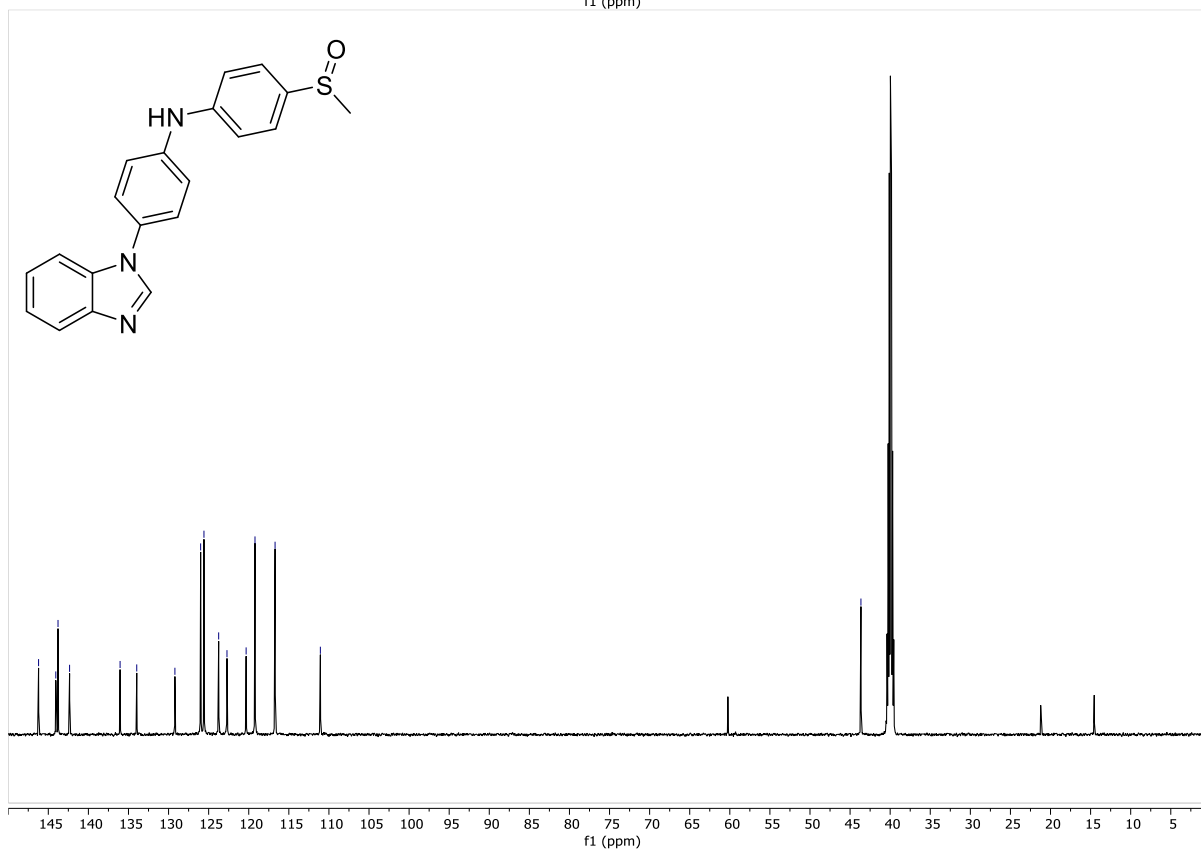
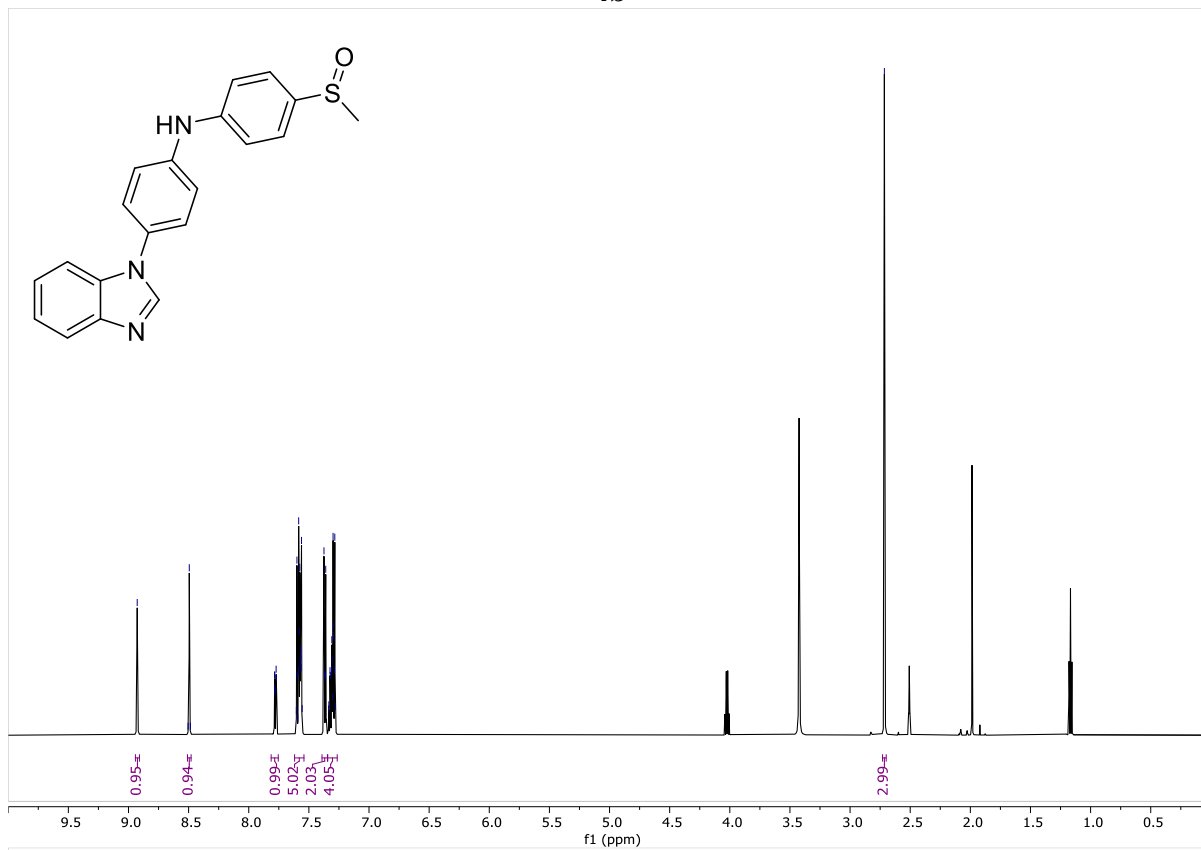
3d



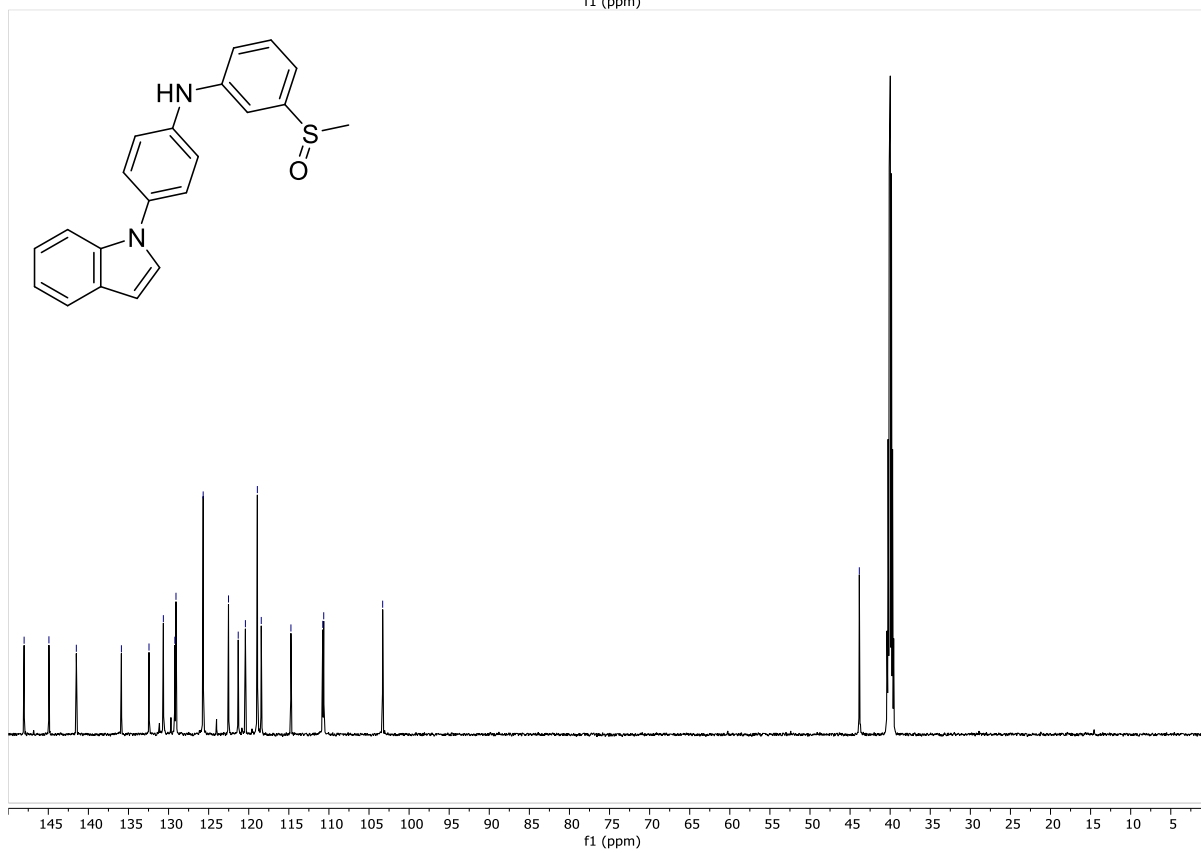
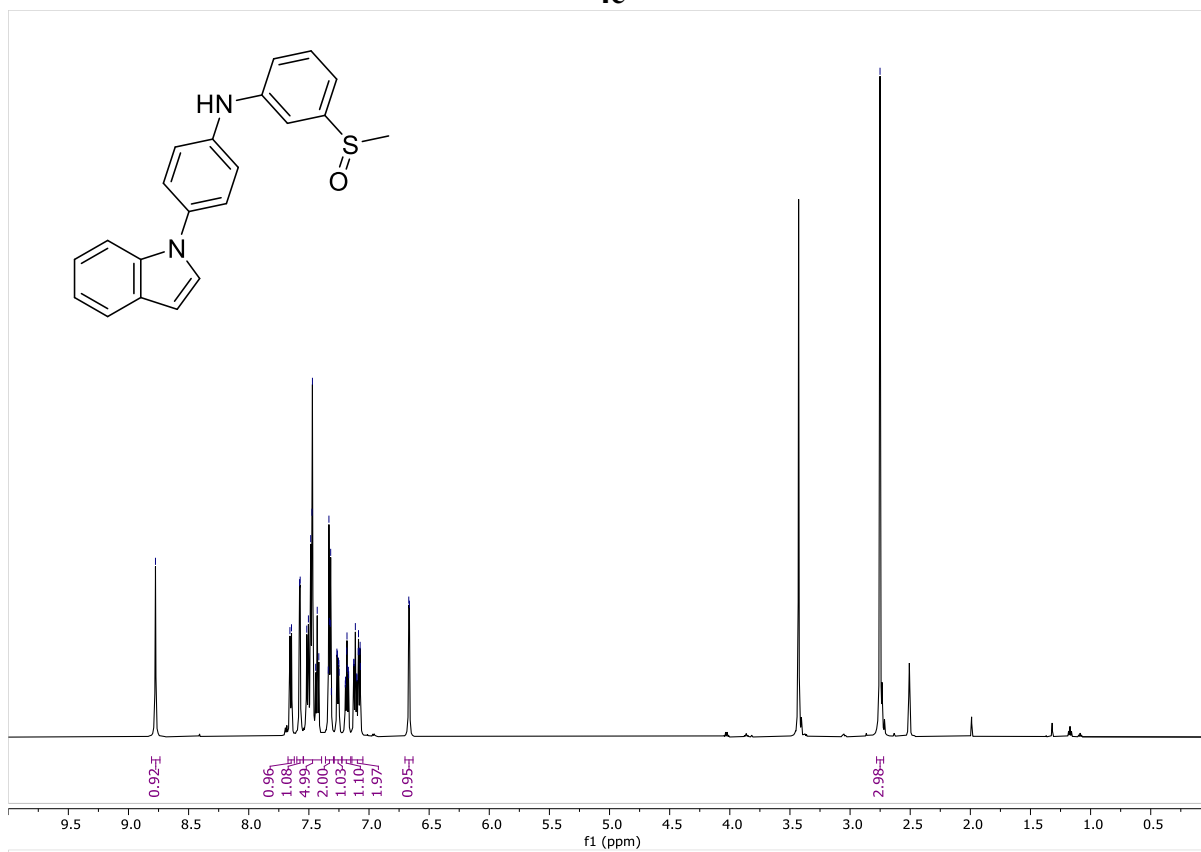
4a



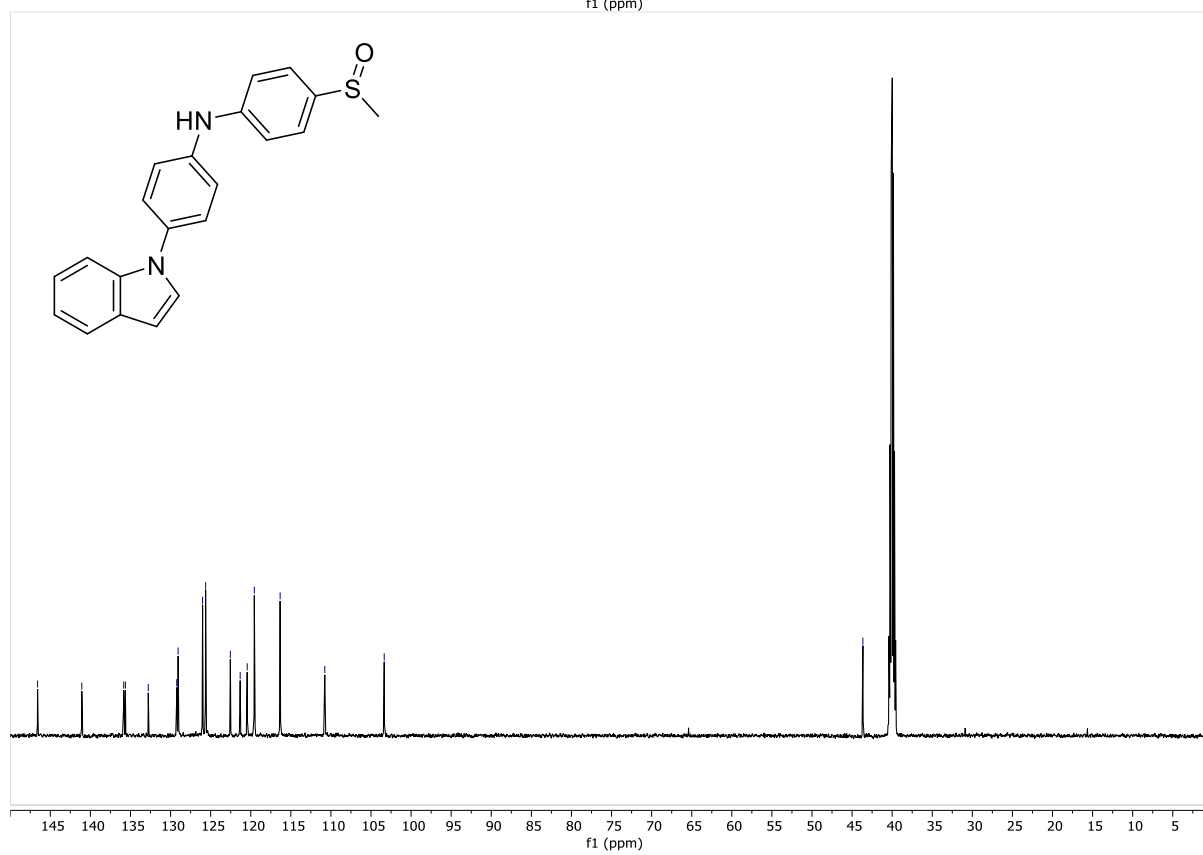
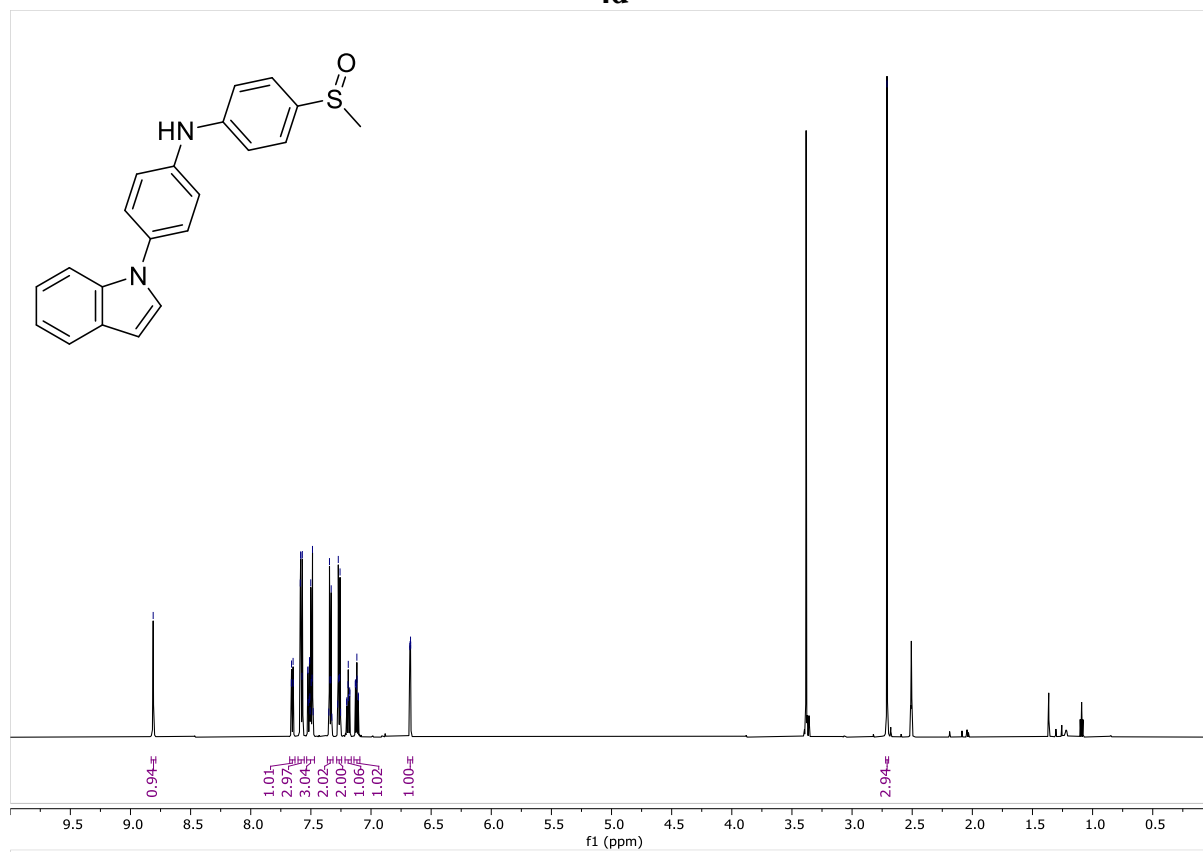
4b



4c



4d

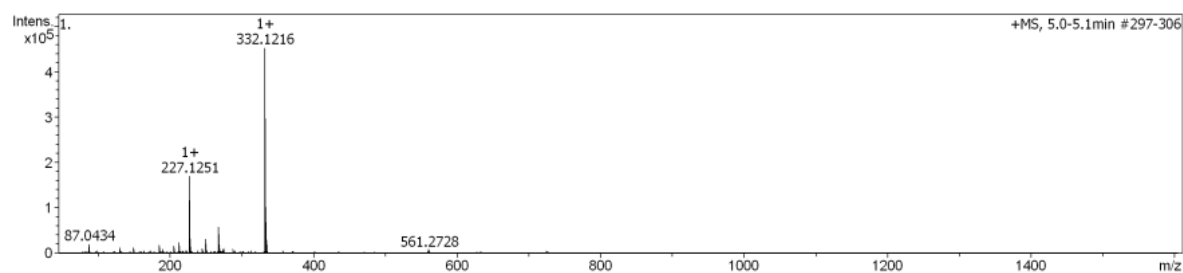
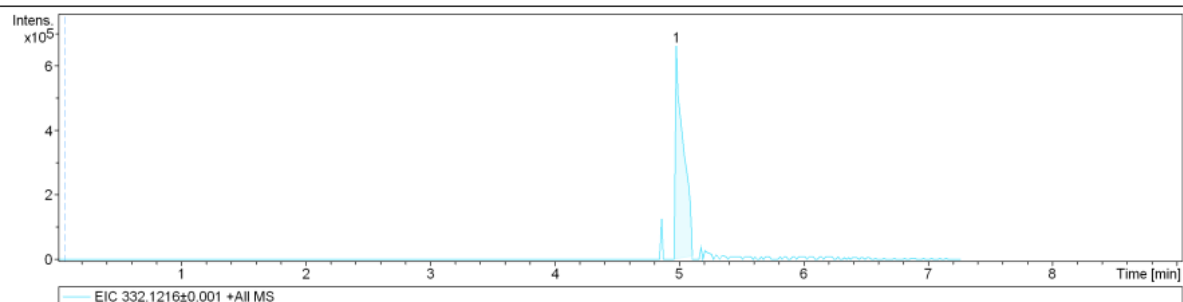


MS data

3a

Acquisition Parameter

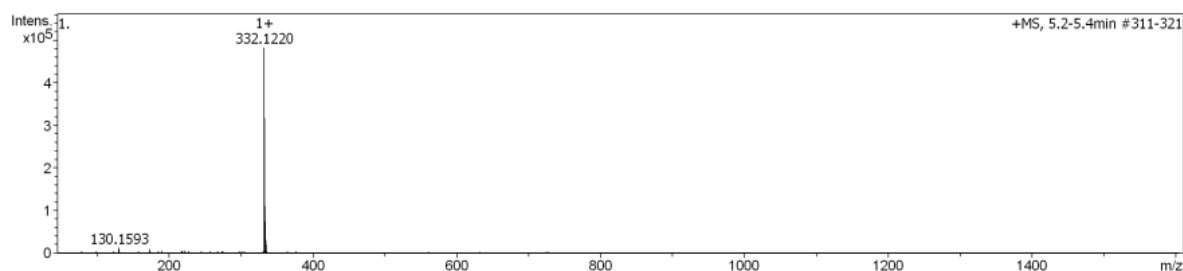
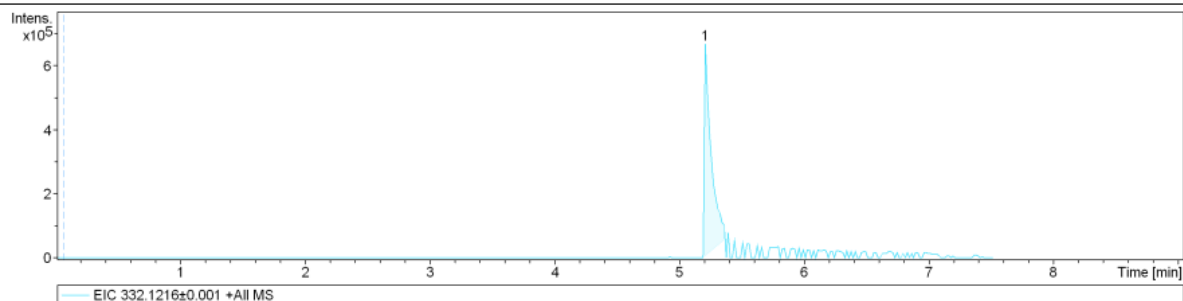
Source Type	ESI	Ion Polarity	Positive	Set Nebulizer	3.0 Bar
Focus	Not active	Set Capillary	4500 V	Set Dry Heater	250 °C
Scan Begin	50 m/z	Set End Plate Offset	-500 V	Set Dry Gas	10.0 l/min
Scan End	1600 m/z	Set Collision Cell RF	100.0 Vpp	Set Divert Valve	Waste



3b

Acquisition Parameter

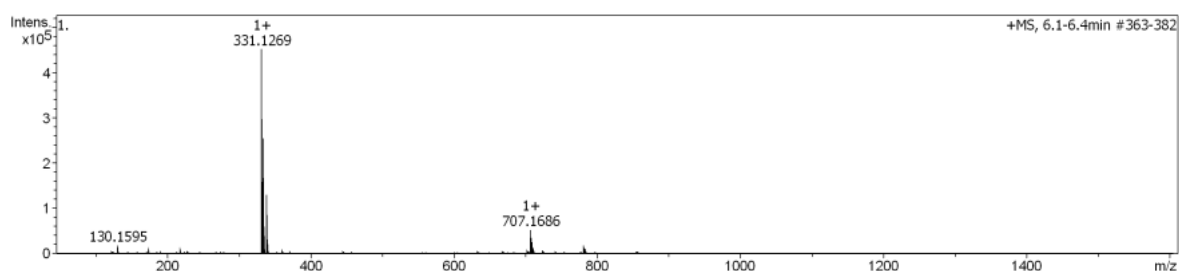
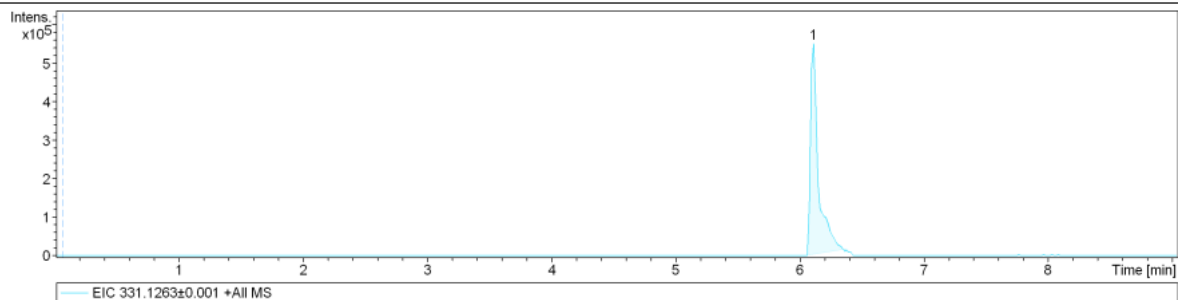
Source Type	ESI	Ion Polarity	Positive	Set Nebulizer	3.0 Bar
Focus	Not active	Set Capillary	4500 V	Set Dry Heater	250 °C
Scan Begin	50 m/z	Set End Plate Offset	-500 V	Set Dry Gas	10.0 l/min
Scan End	1600 m/z	Set Collision Cell RF	100.0 Vpp	Set Divert Valve	Waste



3c

Acquisition Parameter

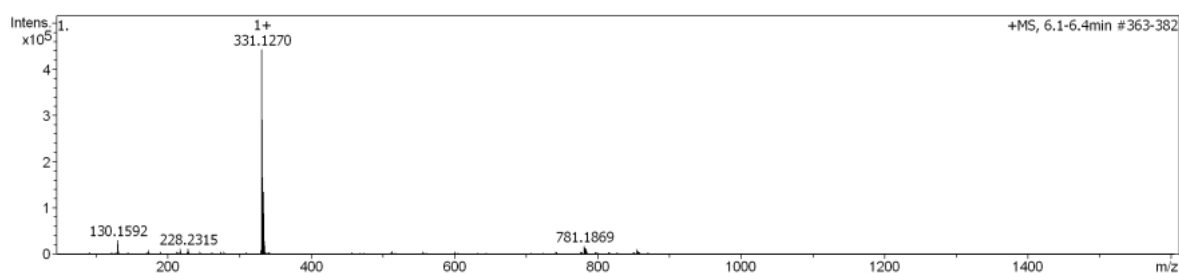
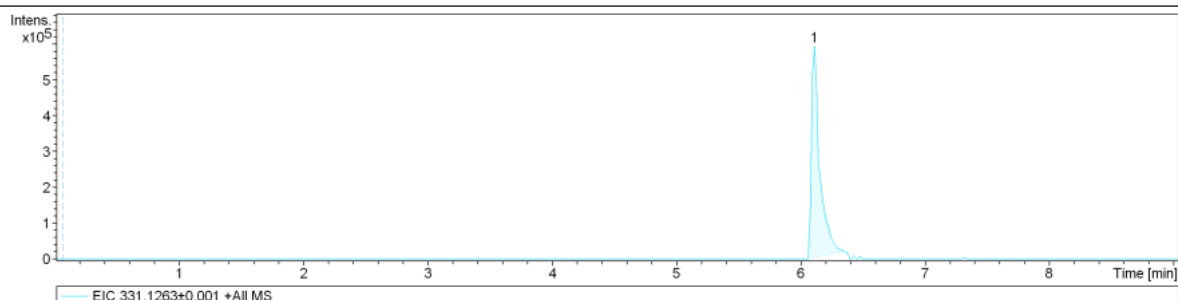
Source Type	ESI	Ion Polarity	Positive	Set Nebulizer	3.0 Bar
Focus	Not active	Set Capillary	4500 V	Set Dry Heater	250 °C
Scan Begin	50 m/z	Set End Plate Offset	-500 V	Set Dry Gas	10.0 l/min
Scan End	1600 m/z	Set Collision Cell RF	100.0 Vpp	Set Divert Valve	Waste



3d

Acquisition Parameter

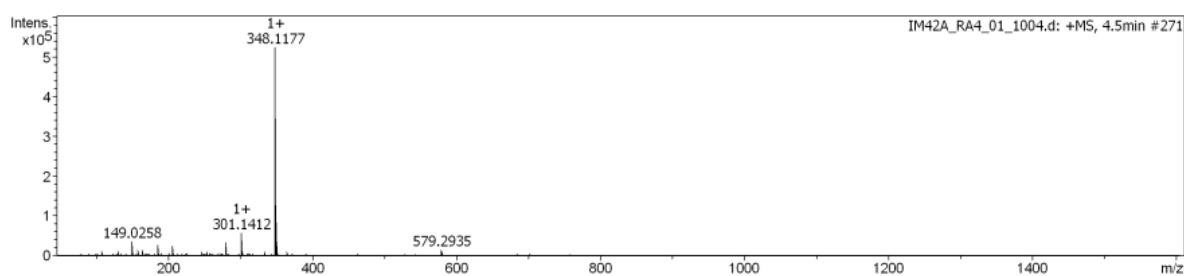
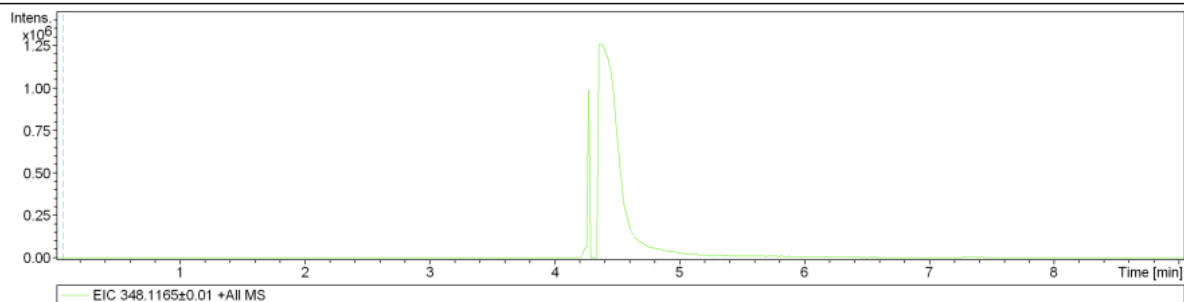
Source Type	ESI	Ion Polarity	Positive	Set Nebulizer	3.0 Bar
Focus	Not active	Set Capillary	4500 V	Set Dry Heater	250 °C
Scan Begin	50 m/z	Set End Plate Offset	-500 V	Set Dry Gas	10.0 l/min
Scan End	1600 m/z	Set Collision Cell RF	100.0 Vpp	Set Divert Valve	Waste



4a

Acquisition Parameter

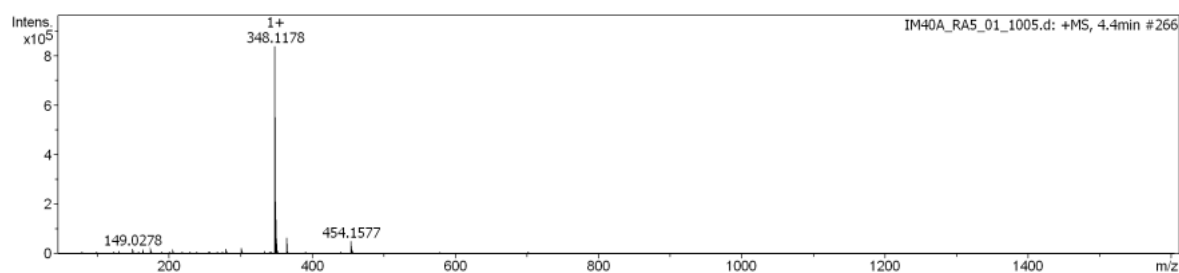
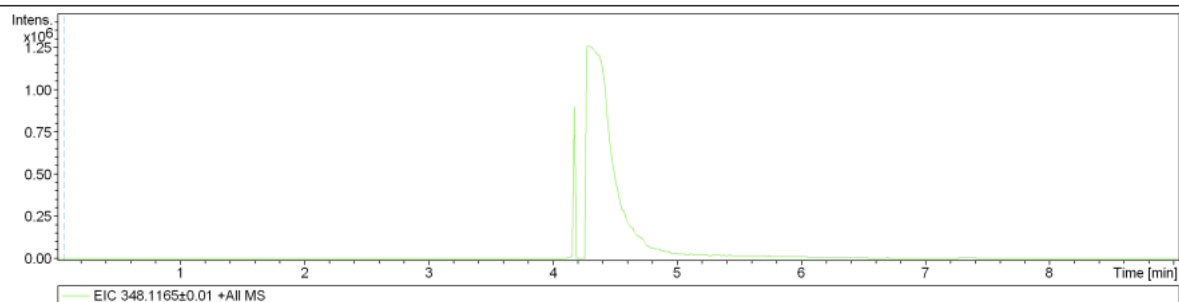
Source Type	ESI	Ion Polarity	Positive	Set Nebulizer	3.0 Bar
Focus	Not active	Set Capillary	4500 V	Set Dry Heater	250 °C
Scan Begin	50 m/z	Set End Plate Offset	-500 V	Set Dry Gas	10.0 l/min
Scan End	1600 m/z	Set Collision Cell RF	100.0 Vpp	Set Divert Valve	Waste



4b

Acquisition Parameter

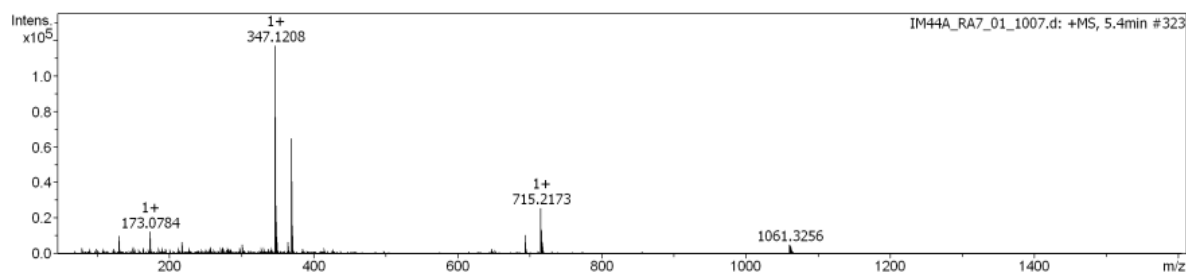
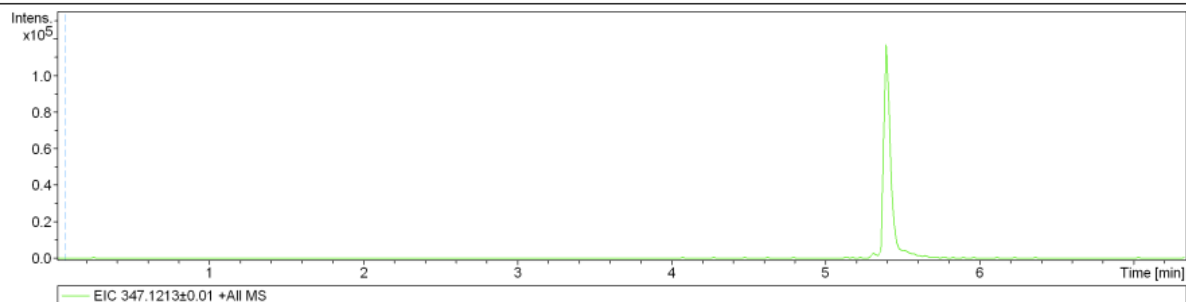
Source Type	ESI	Ion Polarity	Positive	Set Nebulizer	3.0 Bar
Focus	Not active	Set Capillary	4500 V	Set Dry Heater	250 °C
Scan Begin	50 m/z	Set End Plate Offset	-500 V	Set Dry Gas	10.0 l/min
Scan End	1600 m/z	Set Collision Cell RF	100.0 Vpp	Set Divert Valve	Waste



4c

Acquisition Parameter

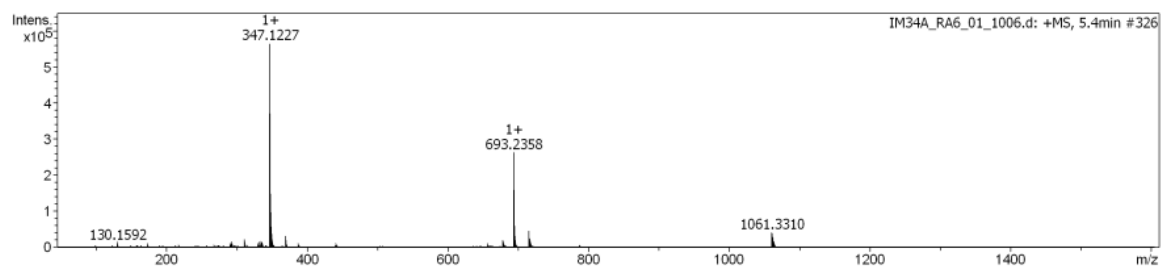
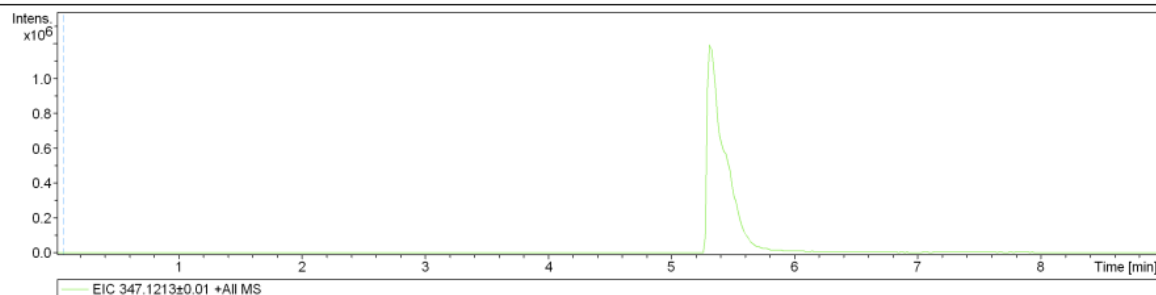
Source Type	ESI	Ion Polarity	Positive	Set Nebulizer	3.0 Bar
Focus	Not active	Set Capillary	4500 V	Set Dry Heater	250 °C
Scan Begin	50 m/z	Set End Plate Offset	-500 V	Set Dry Gas	10.0 l/min
Scan End	1600 m/z	Set Collision Cell RF	100.0 Vpp	Set Divert Valve	Waste



4d

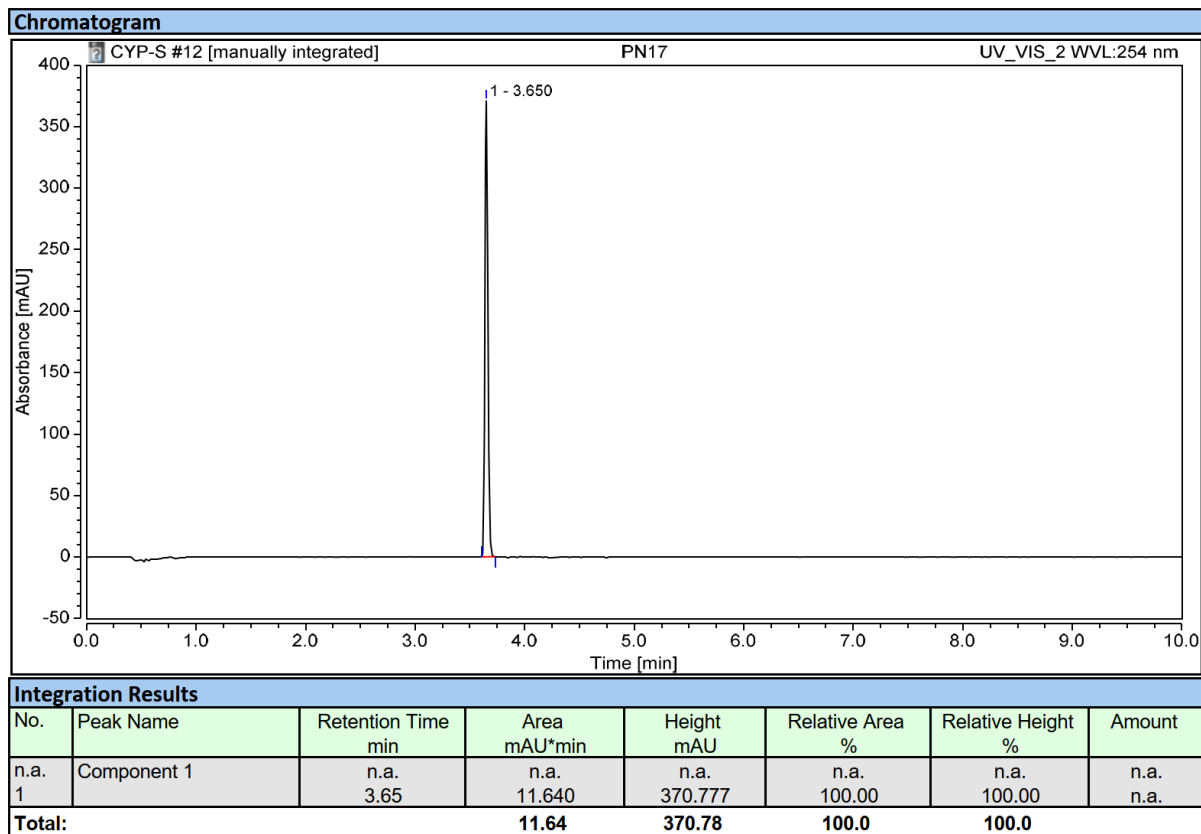
Acquisition Parameter

Source Type	ESI	Ion Polarity	Positive	Set Nebulizer	3.0 Bar
Focus	Not active	Set Capillary	4500 V	Set Dry Heater	250 °C
Scan Begin	50 m/z	Set End Plate Offset	-500 V	Set Dry Gas	10.0 l/min
Scan End	1600 m/z	Set Collision Cell RF	100.0 Vpp	Set Divert Valve	Waste

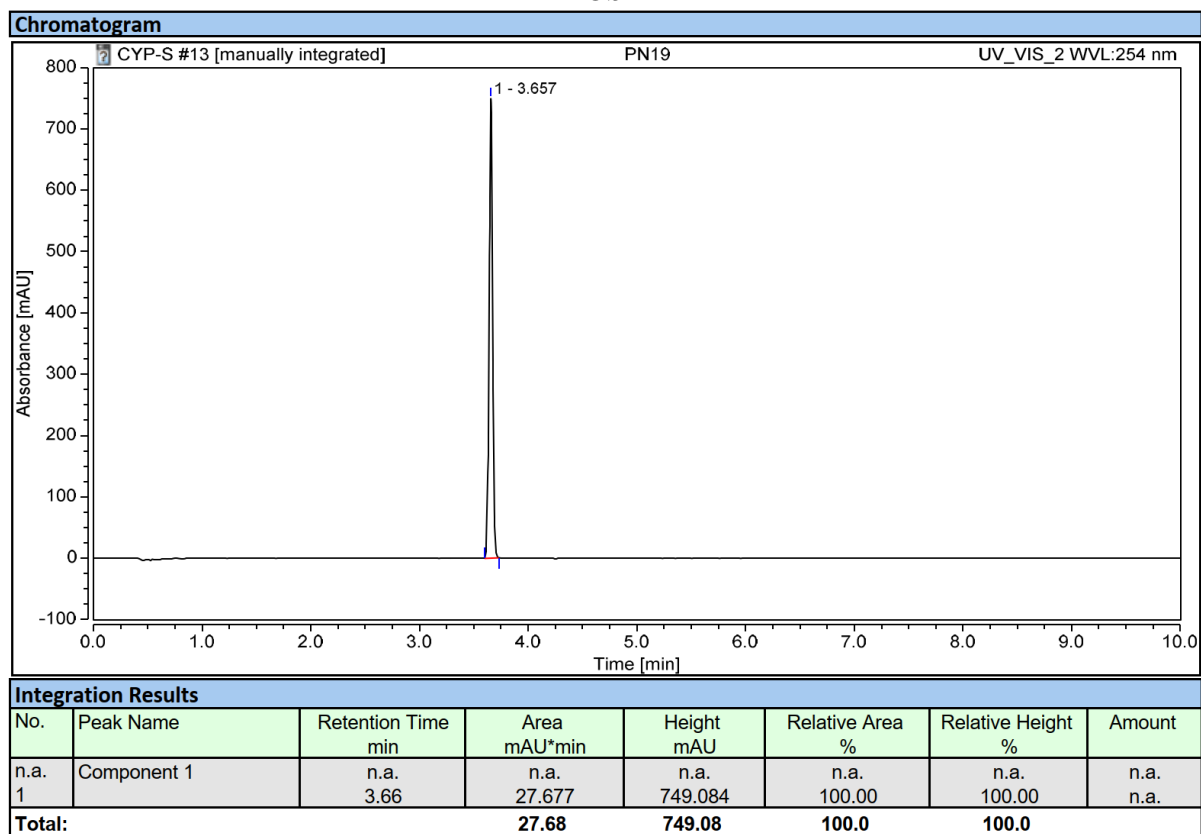


HPLC data

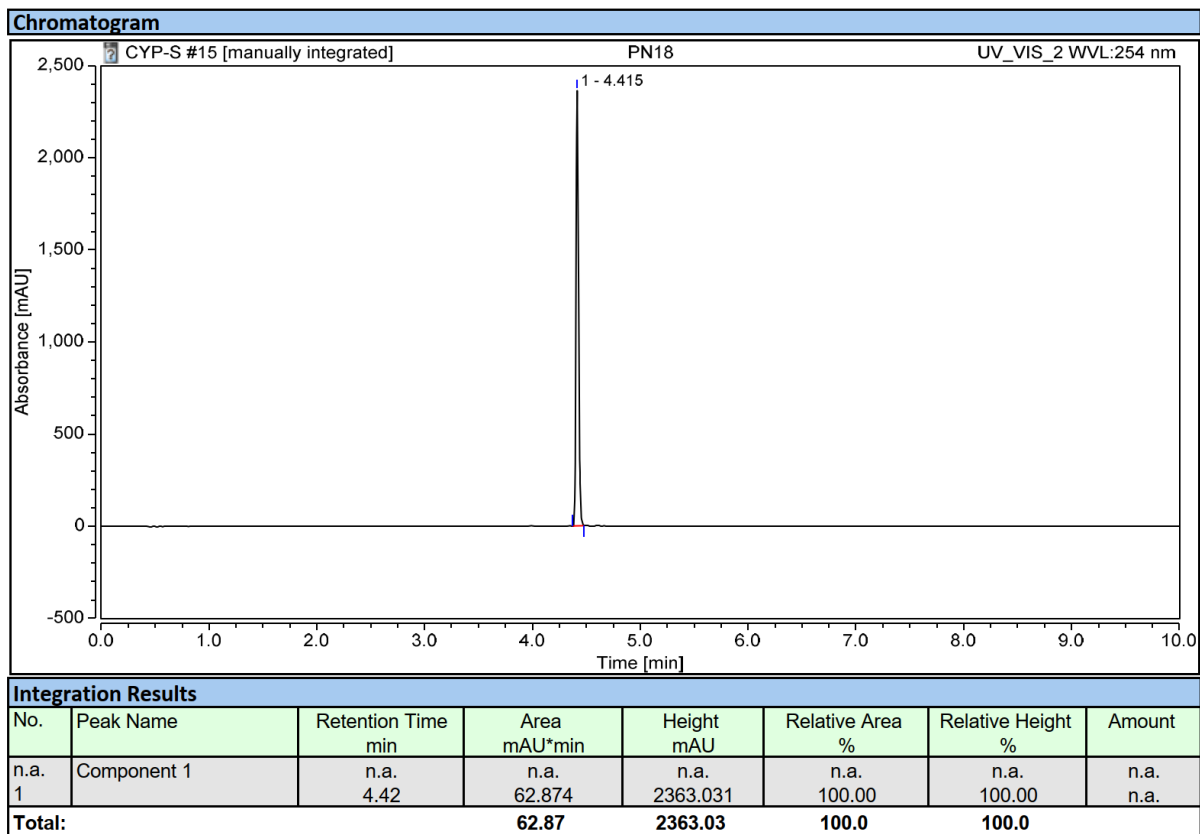
3a



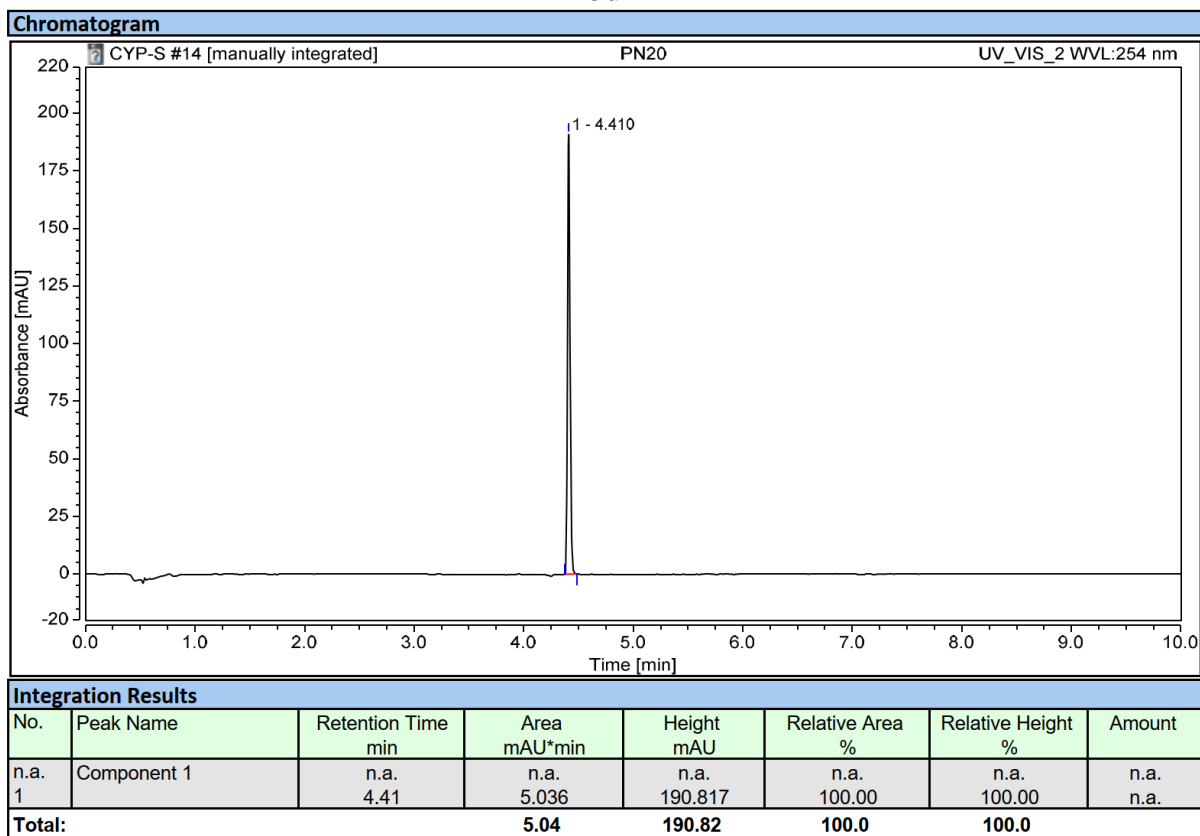
3b



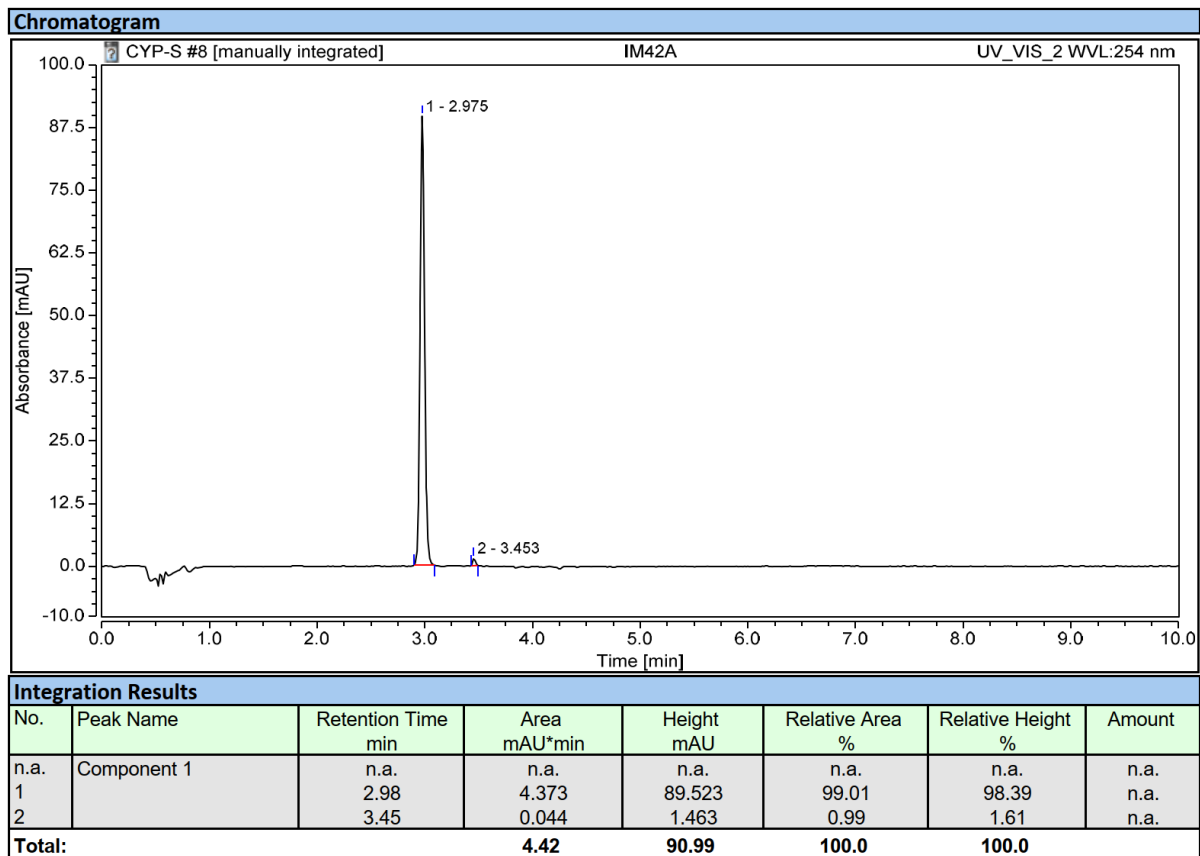
3c



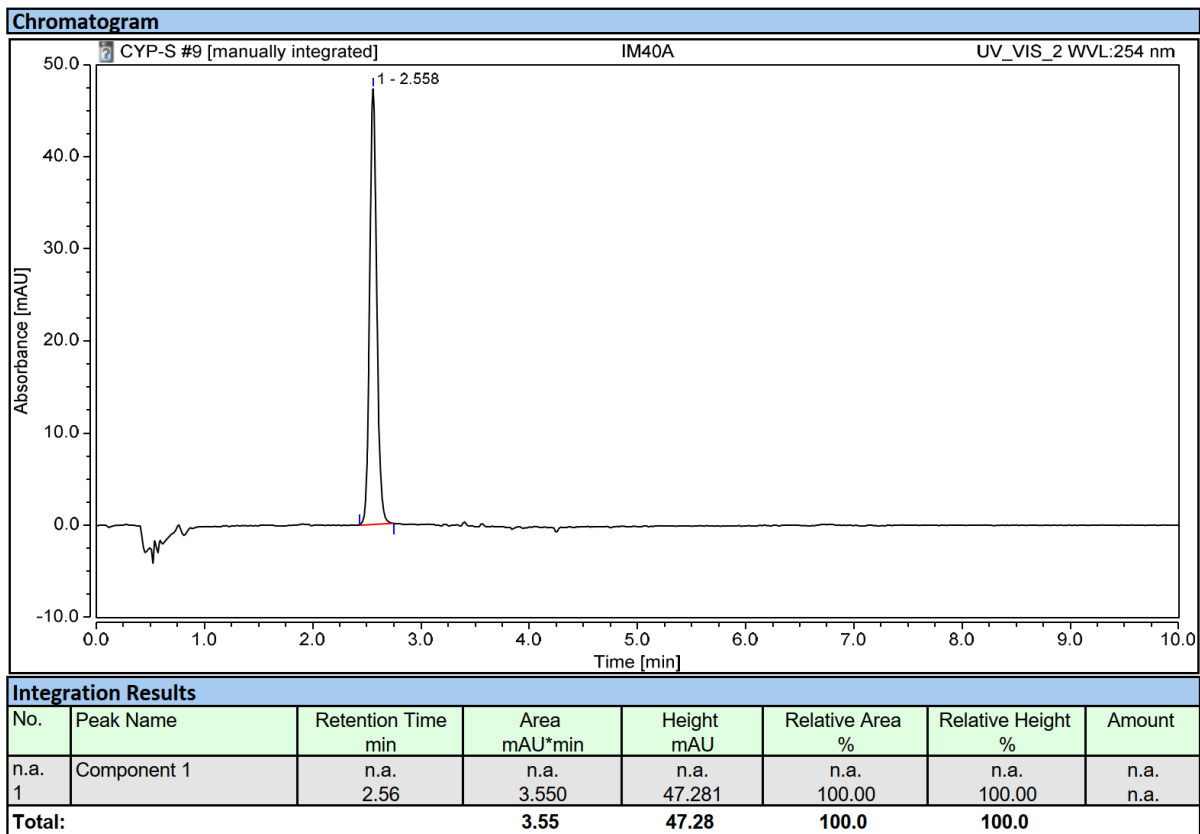
3d



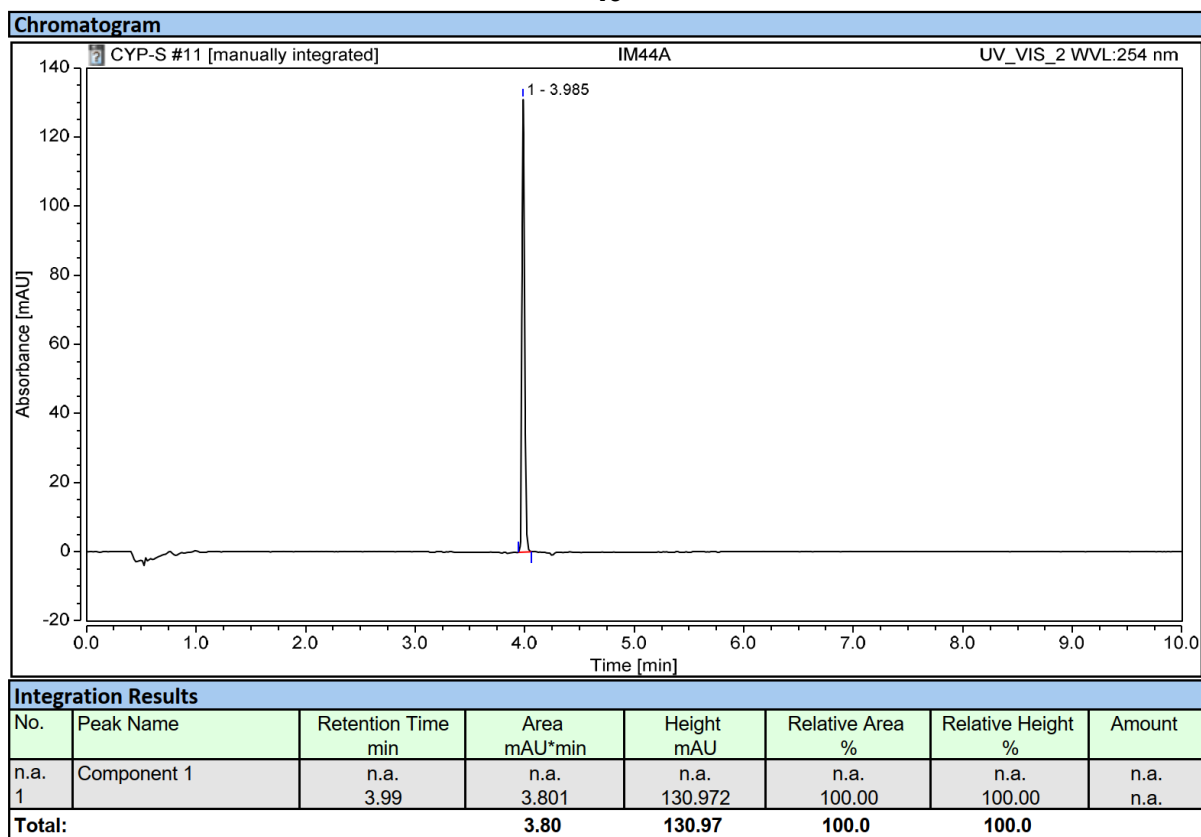
4a



4b



4c



4d

