




## Article

# Serum Level of Cytokeratin 18 (M65) as a Prognostic Marker of High Cardiovascular Disease Risk in Individuals with Non-Alcoholic Fatty Liver Disease

Sabrina Pagano <sup>1,2,\*</sup> , Stephan J. L. Bakker <sup>3</sup> , Catherine Juillard <sup>2</sup>, Robin P. F. Dullaart <sup>4</sup>   
and Nicolas Vuilleumier <sup>1,2</sup>

<sup>1</sup> Division of Laboratory Medicine, Diagnostics Department, Geneva University Hospitals, 1205 Geneva, Switzerland; nicolas.vuilleumier@hcuge.ch

<sup>2</sup> Department of Medicine Specialties, Medical Faculty, Geneva University, 1211 Geneva, Switzerland; catherine.juillard@unige.ch

<sup>3</sup> Division of Nephrology, Department of Internal Medicine, University Medical Center Groningen, University of Groningen, 9700 RB Groningen, The Netherlands; s.j.l.bakker@umcg.nl

<sup>4</sup> Division of Endocrinology, Department of Internal Medicine, University Medical Center Groningen, University of Groningen, 9700 RB Groningen, The Netherlands; dull.fam@12move.nl

\* Correspondence: sabrina.pagano@hcuge.ch

**Abstract:** Alterations in apoptosis, as reflected by circulating Cytokeratin 18 (CK18), are involved in the progression of non-alcoholic fatty liver disease (NAFLD) to non-alcoholic steatohepatitis and atherogenesis. We aimed to explore the discriminant accuracy of Cytokeratin 18 (CK18, including M65 and M30 forms) for an elevated fatty liver index (FLI) as a validated proxy of NAFLD, and cardiovascular disease (CVD) risk in the general population. Both serum CK18 forms were measured using a commercial immunoassay in randomly selected samples from 312 participants of the PREVENT general population cohort.  $FLI \geq 60$  was used to indicate NAFLD. Framingham Risk Score (FRS) and the SCORE2 were used to estimate the 10-year risk of CVD. The Receiver Operating Characteristic (ROC) curve, linear/logistic regression models, and Spearman's correlations were used. Intricate associations were found between CK18, FLI, and CVD risk scores. While M30 was the only independent predictor of  $FLI \geq 60$ , M65 best discriminated NAFLD individuals at very-high 10-year CVD risk according to SCORE2 (AUC: 0.71;  $p = 0.001$ ). Values above the predefined manufacturer cutoff (400 U/L) were associated with an independent 5-fold increased risk (adjusted odds ratio: 5.44,  $p = 0.01$ ), with a negative predictive value of 93%. Confirming that NAFLD is associated with an increased CVD risk, our results in a European general population-based cohort suggest that CK18 M65 may represent a candidate biomarker to identify NAFLD individuals at low CVD risk.

**Keywords:** Cytokeratin 18; non-alcoholic fatty liver disease (NAFLD); fatty liver index (FLI); Framingham risk score (FRS); Systematic COronary Risk Evaluation 2 (SCORE2)



**Citation:** Pagano, S.; Bakker, S.J.L.; Juillard, C.; Dullaart, R.P.F.; Vuilleumier, N. Serum Level of Cytokeratin 18 (M65) as a Prognostic Marker of High Cardiovascular Disease Risk in Individuals with Non-Alcoholic Fatty Liver Disease. *Biomolecules* **2023**, *13*, 1128. <https://doi.org/10.3390/biom13071128>

Academic Editor: Jorge Joven

Received: 16 June 2023

Revised: 10 July 2023

Accepted: 12 July 2023

Published: 14 July 2023



**Copyright:** © 2023 by the authors. Licensee MDPI, Basel, Switzerland. This article is an open access article distributed under the terms and conditions of the Creative Commons Attribution (CC BY) license (<https://creativecommons.org/licenses/by/4.0/>).

## 1. Introduction

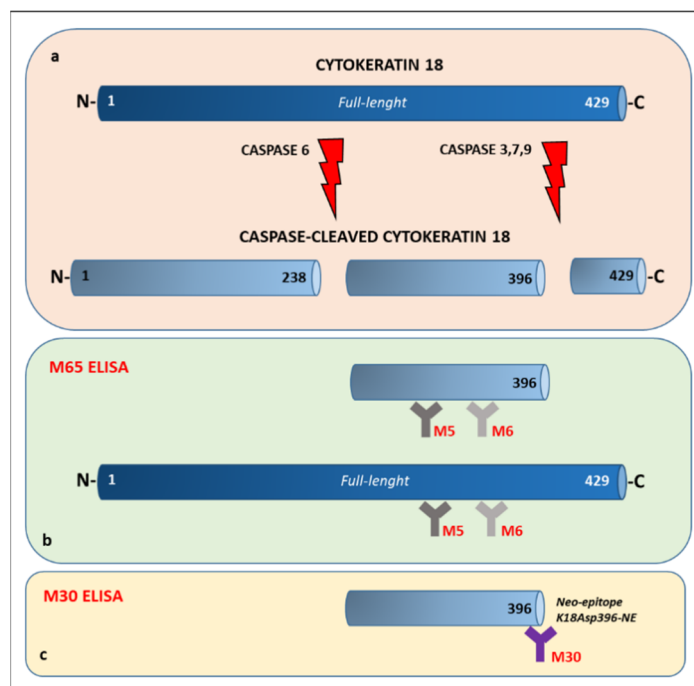
Non-alcoholic fatty liver disease (NAFLD) [1] is defined as hepatic steatosis (triglycerides > 5.5% of liver volume) arising in the absence of significant alcohol intake without evidence of injury or fibrosis [1].

NAFLD is currently the most common cause of chronic liver disease globally, with a 20–30% prevalence in the adult population that grows in obesity or diabetic patients up to 70–90%, with elevated annual medical costs worldwide [2,3]. NAFLD encompasses a histological spectrum ranging from simple steatosis to non-alcoholic steatohepatitis (NASH), and can progress to fibrosis and cirrhosis with complications such as decompensation and hepatocellular carcinoma [1,2,4,5].

NALFD, as an underlying liver disorder, is estimated to become the leading indication for liver transplantation [3]. To meet population-based NAFLD screening requirements,

several laboratory-based algorithms have been developed [6] to identify individuals at NAFLD risk in the general population, such as the fatty liver index (FLI) [7–9]. NAFLD is nowadays considered an independent risk factor for several extra-hepatic chronic diseases [9–12] such as cardiovascular disease (CVD), hypertension, type 2 diabetes (T2D), and chronic kidney disease. With CVD being the most common cause of death among NAFLD patients [13], accurate CVD risk stratification is also of major clinical importance, where biomarker-based approaches are often pragmatically appealing on top of providing further physiopathological insights.

Cytokeratin 18 (CK18) is a cytoskeletal protein and the main intermediate filament family member expressed in the liver [14] and other epithelial tissues [15]. The CK18 full-length form is released from necrotic cells, whereas a caspase-cleaved fragment is a product of the structural changes that occur during apoptosis [15,16]. Soluble total and fragments of CK18 can be detected in human serum with enzyme-linked immunoassay (ELISA) [17,18] (Figure 1). The M65 assay measures total CK18, i.e., full-length and caspase-cleaved fragments of CK18 generated during cell necrosis and apoptosis [17,18] (Figure 1, panel b), while the M30 assay detects a neoepitope created in the caspase-3 cleaved 30kDa fragment [17] during cell apoptosis (Figure 1, panel c).



**Figure 1.** CK18 detection and distinction between M30 and M65 immunoassays. (a) Full-length and caspase-cleaved CK18 fragments. (b) The cytokeratin 18 (CK18) M65 immunoassay measures total CK18 that is, full-length and caspase-cleaved CK 18 fragments generated during cell necrosis and apoptosis. (c) CK18 M30 assay detects a neoepitope created in the caspase-3 cleaved 30-kDa fragment released during cell apoptosis only.

Besides other circulating biomarkers, such as proinflammatory cytokines, iron and ferritin, and adipose tissue-derived hormones, total CK18 and its fragments have been proposed as promising biomarkers of liver cell death. CK18 levels have been found to be elevated in patients with NAFLD [19,20] and may be useful to differentiate between NAFLD and NASH [21]. Furthermore, CK18 is known to be expressed in atherosclerotic lesions, and its serum/plasma concentration is associated with coronary artery disease [22,23] on top of being increased in different diseases associated with an increased cardiovascular risk, such as chronic kidney disease [24], T2D [25], and other diseases related to increased

endoplasmic reticulum stress and oxidative stress, typical features of cardiometabolic disorders [26–28].

A recent study by Quian and colleagues showed that CK18 (M65) was independently and positively associated with cardiometabolic disorders, even after adjustment for the presence of NAFLD and other cardiovascular risk factors [29]. Notably, limited data are available regarding the ability of CK18 to predict NAFLD in the general population and to predict CVD risk among NAFLD subjects. Taken together, these observations point to CK18 as an appealing biomarker candidate to capture both NAFLD and atherogenesis-related hazards.

Accordingly, the present study was aimed at evaluating (i) the discriminant accuracy of CK18 in identifying individuals suspected of having NAFLD ( $\text{FLI} \geq 60$ ) and (ii) within the subset of individuals with an  $\text{FLI} \geq 60$ , the predictive ability of CK18 levels to predict high 10-year CVD risk according to Framingham Risk Score (FRS) and the Systematic COronary Risk Evaluation (SCORE)-2 algorithms. For this purpose, we used data from the Prevention of Renal and Vascular Endstage Disease (PREVEND) general-based population cohort study (<https://umcgresearch.org/w/prevend>, accessed on 9 July 2023).

The cytokeratin 18 (CK18) M65 immunoassay measures total CK18, that is, full-length and caspase-cleaved CK18 fragments generated during cell necrosis and apoptosis (panel b). CK18 M30 assay detects a neoepitope created in the caspase-3 cleaved 30-kDa fragment released during cell apoptosis only (panel c).

## 2. Materials and Methods

### 2.1. The PREVEND General Population Cohort

The PREVEND (Prevention of Renal and Vascular Endstage Disease) cohort is a large population-based study including 8592 individuals aged 28–75 years from the city of Groningen (The Netherlands) [30,31]. From them, 6066 participants completed the third screening PREVEND study round (2004–2007), where active infectious hepatitis and alcohol consumption were excluded by a detailed questionnaire and for which an extensive clinical and biological characterization is available. Participants were instructed to remain fasting from 22:00 PM the day before visiting the PREVEND facility. Blood was obtained by venipuncture from an antecubital vein after 15–30 min rest. Blood samples were collected on melting ice and then allowed to clot. Serum was prepared by centrifugation at  $1000 \times g$  for 10 min. Shortly thereafter, serum aliquots were stored at  $-80^\circ\text{C}$ . Samples were sent on dry ice to the laboratory of dr. Pagano. Total storage time was about 4 years. Samples were thawed only once on melting ice for measurement of CK18 and biochemical parameters required to calculate the FLI and the CVD risk scores. For the purpose of the current study, we randomly selected 312 individuals with available serum samples for measurement of CK18 and the biochemical parameters required for the present study.

### 2.2. NAFLD Definition in PREVEND

Suspected NAFLD was ascertained using the Fatty Liver Index (FLI) and defined as an  $\text{FLI} \geq 60$  as a validated proxy to detect NAFLD in the general population [7–9,31,32].

The FLI is calculated according to the following formula:  

$$\text{FLI} = \left( \frac{e^{0.953 \times \log_e(\text{triglycerides}) + 0.139 \times \text{BMI} + 0.718 \times \log_e(\text{GGT}) + 0.053 \times \text{waist circumference} - 15.745}}{1 + e^{0.953 \times \log_e(\text{triglycerides}) + 0.139 \times \text{BMI} + 0.718 \times \log_e(\text{GGT}) + 0.053 \times \text{waist circumference} - 15.745}} \right) \times 100$$
 where GGT is gamma-glutamyltransferase.

### 2.3. CVD Risk Prediction Assessment

Absolute risk for 10-year CVD was computed using the Framingham heart risk (FRS) [33] or the Systematic COronary Risk Evaluation 2 (SCORE2) [34] algorithms.

FRS calculation is based on gender, age, systolic blood pressure, treatment for hypertension, smoking, presence of diabetes, total cholesterol, and HDL cholesterol [33]. According to latest recommendations, absolute CVD risk percentage over 10 years was classified as low risk ( $<10\%$ ), intermediate risk ( $10\text{--}20\%$ ), and high risk ( $>20\%$ ) [35,36].

SCORE2 is a recently computed algorithm derived, calibrated, and validated to predict 10-year risk of first-onset CVD in European populations. It is calculated based on sex, age, smoking status, systolic blood pressure, total cholesterol, and HDL cholesterol [34]. The SCORE2 algorithm assigned three risk categories: (1) low-moderate risk, (2) high risk, and (3) very-high risk [34].

#### 2.4. Cytokeratin 18 Assessment

The ELISA measurements of the Cytokeratin 18 concentrations were performed using the PEVIVA M65<sup>®</sup> ELISA and M30<sup>®</sup> ELISA kits (TECO medical AG, Sissach, Switzerland), according to their corresponding protocols. Absorbance was measured with the FilterMax F3 Multi-Mode Microplate Reader, using the SoftMax Pro software, version 7.0.3.

For the M65 ELISA test, a cutoff < 400 U/L was established on 222 normal subjects, with the 95th percentile equal to 413 U/L. M65 values > 400 U/L are a strong indication of liver disease [37]. The LLOD and LLOQ for this test were 25 U/L and 67 U/L, respectively.

For the M30 ELISA test, a cutoff < 200 U/L was established on 200 normal subjects, with the 95th percentile equal to 251 U/L. M30 values > 200 U/L are a strong indication of liver disease, as reported on the technical information sheet [37,38]. The LLOD and LLOQ for this test were 20 U/L and 40 U/L, respectively.

#### 2.5. Biomarkers Determinations

Total cholesterol, HDL cholesterol, and triglycerides (TG) were measured in serum using routine procedures on a Roche Modular P chemistry analyzer (Roche 8000/H Cobas), and low-density lipoprotein (LDL) cholesterol was calculated using the Friedewald formula. Glucose, gamma-glutamyltransferase (GGT), alkaline phosphatase (ALP), alanine aminotransferase (ALT), and aspartate aminotransferase (AST) were quantified on a Roche Modular Platform. Glucose was measured in plasma by dry chemistry (Eastman Kodak, Amsterdam, The Netherlands).

#### 2.6. Statistical Analysis

Continuous variables were expressed as median and interquartile range (IQR) and categorical variables in numbers with percentages. Normality of distribution was tested with the Shapiro–Wilk test. Comparisons between the two groups were performed using a non-parametric Mann–Whitney U test or Chi-square test. Correlations analyses were carried out using Spearman rank correlation test. In linear regression analysis, non-normally distributed data were transformed into natural logarithmic values.

C-statistics analyses were used to evaluate the discriminant accuracies of CK18 for FLI  $\geq$  60 and very-high 10-year CVD risk according to FRS and SCORE2, and reported as area under the curve (AUC). Univariate and adjusted logistic regression analyses were performed to examine the association between FLI (continuous value) or CK18 (continuous or categorical values) and a high 10-year risk for CVD (according to SCORE2 or FRS scoring) [33–36] in case of significant AUC only. High FRS or very-high SCORE2 categories (described in the methods section) versus moderate and low-risk groups together in the same category have been set as the binary outcome. We used the cutoff of 200 U/L and 400 U/L for M30 and M65, respectively [37,38], as specified in the above paragraph. Adjusted analyses for continuous or categorical variables were performed only in case of signification in univariate model. These analyses were carried out in three pre-specified PREVEND subgroups consisting of (i) the overall randomly selected individuals, (ii) those with FLI  $\geq$  60, and (iii) those with FLI < 60. Results are reported with 95% confidence intervals (95% CI). Due to the predefined study endpoints and the exploratory nature of this work, adjustment for multiple testing was not performed. Statistical analyses were performed with Tibco Statistica software (version 13.5.0.17, TIBCO Software Inc., Palo Alto, CA, USA) on the PREVEND cohort; statistical significance was set at  $p < 0.05$ . Receiver operating curve (ROC) analysis and the reported values of sensitivity, specificity, and positive and negative predictive values were performed using Analyse-it Software, Ltd.

(Leeds, UK). Spearman's correlation coefficients (bar graphs) and CK18 level distributions dichotomized according to the FLI, FRS, and SCORE2 were performed using GraphPad Prism 9.0.1 software (GraphPad Prism, Boston, MA, USA). In this case, non-parametric unpaired Mann–Whitney U tests were used for group comparisons.

### 3. Results

#### 3.1. Characteristics of the Study Subjects

The demographic characteristics of the 312 randomly selected PREVENT participants are summarized in Table 1. In order to analyze the associations between CK18 (both forms M30 and M65) with CVD risk in individuals from the PREVENT general population with NAFLD, we dichotomized PREVENT participants according to FLI values < or  $\geq 60$  [7,32].

**Table 1.** Clinical characteristics of PREVENT participants (n = 312) according to FLI status.

	Overall (n = 312)	FLI < 60 (n = 200)	FLI $\geq 60$ (n = 112)	p-Value
<b>Demographic</b>				
Age, yr.	53 (46–65)	51 (45–59.5)	59 (50.5–69)	<0.0001
Males, no. (%)	154 (49.3)	111 (55.5)	43 (38.3)	0.01
Waist circumference, cm	94 (85–104)	87 (80–94)	107 (102–114)	<0.0001
Weight, kg	78 (69.7–89)	73 (65–80)	93 (84–102)	<0.0001
BMI, kg/m <sup>2</sup>	26.5 (23.7–29.5)	24.6 (22.8–26.4)	30.4 (28.8–32.9)	<0.0001
Diastolic blood pressure, mm Hg	72 (67–78)	70 (65–76)	76 (71–80)	<0.0001
Systolic blood pressure, mm Hg	124 (111–138)	118 (108–130)	134 (123–146)	<0.0001
Current smoker, no. (%)	87 (27.9)	65 (32.5)	22 (19.6)	0.064
Type 2 diabetes, no. (%)	43 (13.7)	17 (8.5)	16 (14.2)	0.03
FRS (%) §	11.7 (6.1–23)	9.1 (5.3–14.9)	18.5 (11.7–30)	<0.0001
SCORE2 (%) §§	4 (2.1–7.2)	3.2 (1.9–5.8)	5.75 (3.5–9)	<0.0001
<b>Biochemical</b>				
Total-c mg/dL	195 (167–221.9)	196.8 (166.2–220.4)	189.8 (167.6–224.4)	0.97
LDL-c mg/dL #	131.7 (104–155.7)	132.3 (106–154.2)	123.7 (100.2–155.8)	0.46
HDL-c mg/dL	38.2 (31.7–47.5)	41.9 (35.5–50.8)	32.4 (26.9–37.1)	<0.0001
TG mg/dL	114.2 (84.1–157.6)	95.6 (69–123.1)	162 (120.4–215.2)	<0.0001
Plasma glucose, mg/dL	85 (77–92)	81.4 (76–88.6)	90 (84.6–106.2)	<0.0001
ALP, U/L	44 (35–54)	42 (34–52.5)	47.5 (40–56.5)	0.0008
ALT, U/L	6.5 (5–9)	5.8 (5–8)	7.9 (5.6–10.1)	<0.0001
AST, U/L	18 (15–23)	18 (14–21)	20 (16–26)	0.0005
GGT, U/L	21 (14–35)	16.5 (12.5–24.5)	36 (24–54.5)	<0.0001
FLI (%) §§§	41.3 (16.7–75.6)	22.2 (10.9–39.5)	82.3 (73.4–92.5)	<0.0001
CK-18/M30, U/L	176.9 (132.8–224.5)	158.6 (121.2–204.6)	210.6 (163.7–272.4)	<0.0001
CK-18/M65, U/L	173.1 (128.2–263.1)	161.1 (115.5–234.6)	220.4 (153.6–323.2)	<0.0001

All continuous variables are expressed as median (interquartile range [IQR]) or number [no.] (percentages [%]). p-value (Mann–Whitney U-test for continuous variables and Fisher's exact test for categorical variables). Abbreviations: total-c: total cholesterol; LDL-c: low-density lipoprotein cholesterol; HDL-c: high-density lipoprotein cholesterol; TG: triglyceride; BMI: body mass index; ALT: alanine transaminase; AST: aspartate transaminase; FLI: fatty liver index; ALP: alkaline phosphatase; GGT: gamma-glutamyl-transferase; FRS: Framingham risk score; SCORE: Systematic COronary Risk Evaluation; and CK: cytokeratin. § FRS: calculated based on sex, age, smoking status, presence of diabetes, hypertension treatment, total cholesterol, and HDL cholesterol. §§ SCORE2: calculated based on sex, age, smoking status, systolic blood pressure, total cholesterol, and HDL cholesterol. §§§ FLI:  $(e^{0.953 \times \log_e(\text{triglycerides})} + 0.139 \times \text{BMI} + 0.718 \times \log_e(\text{ggt}) + 0.053 \times \text{waist circumference} - 15.745) / (1 + e^{0.953 \times \log_e(\text{triglycerides})} + 0.139 \times \text{BMI} + 0.718 \times \log_e(\text{ggt}) + 0.053 \times \text{waist circumference} - 15.745}) \times 100$ . # LDL-c: calculated according to Friedwald formula.

112 out of 312 (35.8%) participants had an FLI  $\geq 60$ . Men were less likely to have an FLI  $\geq 60$  than women ( $p = 0.003$ ). Participants with FLI  $\geq 60$  were older and had a higher body mass index (BMI), waist circumference, weight, diastolic and systolic blood pressure, TG, plasma glucose, ALT, AST, GGT, and a lower HDL-c than those with FLI < 60. Total-c and LDL-c did not differ significantly between the two groups. Both CK18 M30 and M65 levels were significantly higher in subjects with FLI  $\geq 60$  than in subjects with



FLI < 60. Moreover, the FLI  $\geq$  60 group had significantly higher values of FRS and SCORE2 compared to the FLI < 60 group (Table 1).

### 3.2. CK18 and the Risk of NAFLD (FLI $\geq$ 60)

On the 312 studied PREVENT participants, C-statistics analyses showed that both M30 and M65 as continuous variables had a significant discriminant accuracy in predicting an FLI  $\geq$  60, with AUCs of 0.702 (CI: 0.641–0.762;  $p < 0.0001$ ) and 0.657 (CI: 0.59–0.719;  $p < 0.0001$ ), respectively (Supplemental Table S1). Adjusted logistic regression analyses indicated that only M30 was an independent predictor of FLI  $\geq$  60. Values above the predefined cutoff of 200 U/L (provided by the manufacturer) were associated with an independent 3-fold increased risk of NAFLD (FLI  $\geq$  60) (Supplemental Table S1). At this cutoff, the sensitivity (SE), specificity (SP), and positive and negative predictive values (PPV, NPV) were 57.1%, 72.5%, 54.0%, and 75.0%, respectively.

### 3.3. CK18 and High-Risk of Cardiovascular Disease Prediction

To further explore the predictive strength of CK18 for CVD risk in PREVENT participants we performed C-statistics and logistic regression in the three pre-specified PREVENT groups (overall, FLI  $\geq$  60 and FLI < 60).

As shown in Table 2, FLI displayed significant AUCs to discriminate an individual at a high 10-year CVD risk according to FRS across the three considered groups. M65 was also a significant predictor of high CVD risk overall and in the FLI  $\geq$  60 groups, while M30 was found to bear some significant predictive ability in the overall cohort only (Table 2). Extending these observations, multivariate logistic regression analyses (using CK18 continuous or categorical values) indicated FLI was the only independent predictor of high FRS ( $p < 0.0001$ ) in the overall cohort and the two subgroups. A close to significant association was observed for M65 in the overall and FLI  $\geq$  60 subgroups as a continuous variable, but not when categorized according to the pre-specified cutoff (Table 2). No associations were retrieved for M30 in any of the subgroups analyzed (Table 2).

**Table 2.** Performance of FLI or CK18 (M30 and M65), categorical or continuous value in predicting high FRS in PREVENT participants.

All PREVENT Participants (n = 312)									
Predictor	Discriminant Accuracy			Univariate Analysis			Multivariate Analysis		
	AUC	95% CI	p-Value	OR	95% CI	p-Value	OR	95% CI	p-Value
M30	0.609	0.540–0.677	0.03	1.001	0.99–1.00	0.08	0.99	0.99–1.001	0.32
FLI	0.722	0.658–0.785	<0.0001	1.03	1.01–1.03	<0.0001	1.025	1.01–1.035	<0.0001
M65	0.608	0.540–0.677	0.03	1.003	1.001–1.004	0.001	1.002	0.99–1.004	0.05
M30 > 200	-	-	-	2.01	1.22–3.32	0.005	1.10	0.61–2.00	0.73
FLI	0.722	0.658–0.785	<0.0001	1.03	1.01–1.03	<0.0001	1.026	1.016–1.035	<0.0001
M65 > 400	-	-	-	2.01	0.91–4.45	0.08	1.10	0.57–3.51	0.44
FLI $\geq$ 60 PREVENT Participants (n = 112)									
Predictor	Discriminant Accuracy			Univariate Analysis			Multivariate Analysis		
	AUC	95% CI	p-Value	OR	95% CI	p-Value	OR	95% CI	p-Value
M30	0.572	0.466–0.679	0.187	-	-	-	-	-	-
FLI	0.678	0.580–0.777	0.001	1.06	1.023–1.010	0.001	1.06	1.020–1.100	0.002
M65	0.615	0.511–0.719	0.036	1.002	1.000–1.004	0.03	1.001	0.999–1.004	0.06
M30 > 200	-	-	-	0.52	0.246–1.135	0.102	-	-	-
FLI	0.678	0.580–0.777	0.001	1.06	1.023–1.010	0.001	1.062	1.023–1.102	0.001
M65 > 400	-	-	-	1.58	0.545–0.46	0.39	1.46	0.48–4.47	0.49

Table 2. Cont.

All PREVEND Participants (n = 312)									
Discriminant Accuracy				Univariate Analysis			Multivariate Analysis		
Predictor	AUC	95% CI	p-Value	OR	95% CI	p-Value	OR	95% CI	p-Value
M30	0.543	0.447–0.639	0.416	-	-	-	-	-	-
FLI	0.618	0.520–0.716	0.025	1.024	1.003–1.045	0.02	-	-	-
M65	0.532	0.434–0.630	0.546	-	-	-	-	-	-
M30 > 200	-	-	-	1.109	0.506–2.43	0.79	-	-	-
FLI	0.618	0.520–0.716	0.025	1.024	1.003–1.045	0.02	-	-	-
M65 > 400	-	-	-	1.50	0.388–0.587	0.55	-	-	-

AUC: area under the curve; OR: odds ratio; CI: confidence interval; CK: cytokeratin; and FLI: fatty liver index. (-): where AUC is non-significant, logistic regression analysis was not performed, and where univariate logistic regression is non-significant, the variable is consequently not added in multivariate analysis. FLI is used as continuous variable. M30 > 200 and M65 > 400 means that variables are used as categorical predictors with the cutoff as specified in the methods section. In multivariate analysis, only FLI was included in the model, considering M30 and M65 as continuous or categorical.

As the SCORE2 algorithm was likely better calibrated for European populations than the FRS [39], we repeated the same analyses with the 10-year CVD risk computed according to SCORE2 as described in Table 3. In the overall group, C-statistics indicated that FLI as a continuous value was found to be the only significant predictor of a very high CVD risk, while a non-significant trend was noted for M65 (Table 3). On the other hand, in the FLI  $\geq 60$  subgroup, M65 was the only predictor of high CV risk according to SCORE2, with an AUC of 0.71. Logistic regression analyses corroborated these results by demonstrating that M65 was independently associated with a 5-fold increased risk of a very high CVD risk, according to SCORE2 (Table 3). M65 values above the pre-specified manufacturer cutoff were associated with the following SE, SP, PPV, and NPV: 41.7%, 89.7%, 33%, and 93.0%, respectively. None of these predictors of interest were found to be discriminant in the FLI < 60 subgroup (Table 3).

Table 3. Performance of FLI or CK-18 (M30 and M65), categorical or continuous value) in predicting very-high CV risk according to SCORE2 in PREVEND participants.

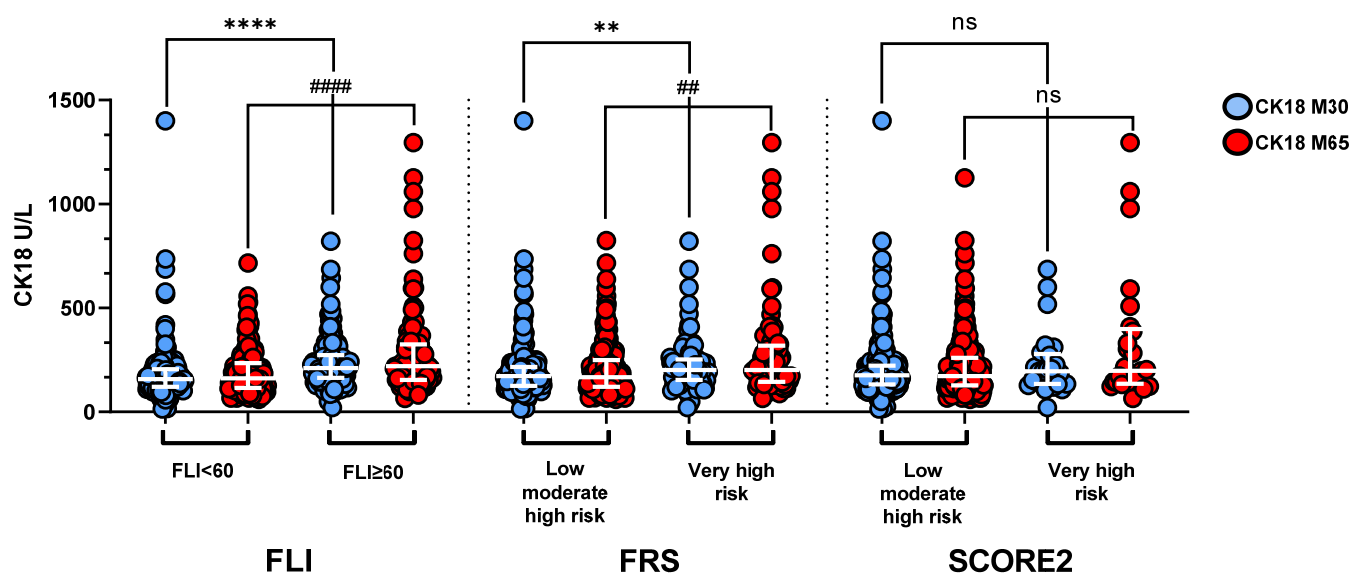
All PREVEND Participants (n = 312)									
Discriminant Accuracy				Univariate Analysis			Multivariate Analysis		
Predictor	AUC	95% CI	p-Value	OR	95% CI	p-Value	OR	95% CI	p-Value
M30	0.554	0.422–0.686	0.39	-	-	-	-	-	-
FLI	0.637	0.518–0.756	0.029	1.015	1.001–1.029	0.035	1.009	0.99–1.024	0.21
M65	0.608	0.478–0.737	0.085	1.003	1.001–1.004	0.0006	1.002	1.00–1.004	0.005
M30 > 200	-	-	-	1.267	0.537–2.991	0.587	-	-	-
FLI	0.637	0.518–0.756	0.029	1.015	1.001–1.029	0.035	1.012	0.991–1.027	0.08
M65 > 400	-	-	-	4.23	1.516–11.83	0.005	3.59	1.25–10.26	0.01
FLI $\geq 60$ PREVEND Participants (n = 112)									
Discriminant Accuracy				Univariate Analysis			Multivariate Analysis		
Predictor	AUC	95% CI	p-Value	OR	95% CI	p-Value	OR	95% CI	p-Value
M30	0.587	0.384–0.790	0.384	-	-	-	-	-	-
FLI	0.636	0.467–0.805	0.086	1.045	0.984–1.109	0.147	1.043	0.975–1.115	0.21
M65	0.714	0.524–0.904	0.016	1.003	1.001–1.005	0.001	1.003	1.001–1.005	0.002
M30 > 200	-	-	-	1.592	0.449–5.644	0.471	-	-	-
FLI	0.636	0.467–0.805	0.086	1.045	0.984–1.109	0.147	1.042	0.98–1.108	0.18
M65 > 400	-	-	-	5.584	1.50–20.65	0.009	5.444	1.44–20.53	0.01

Table 3. Cont.

FLI < 60 PREVENTD Participants (n = 200)									
Predictor	Discriminant Accuracy			Univariate Analysis			Multivariate Analysis		
	AUC	95% CI	p-Value	OR	95% CI	p-Value	OR	95% CI	p-Value
M30	0.495	0.346–0.644	0.955	-	-	-	-	-	-
FLI	0.568	0.424–0.712	0.448	-	-	-	-	-	-
M65	0.500	0.376–0.625	0.996	-	-	-	-	-	-
M30 > 200	-	-	-	0.555	0.116–2.655	0.461	-	-	-
M65 > 400	-	-	-	1.618	0.189–13.80	0.659	-	-	-

SCORE: Systematic COronary Risk Evaluation; AUC: area under the curve; OR: odds ratio; CI: confidence interval; CK: cytokeratin; and FLI: fatty liver index. (-): where AUC is non-significant, logistic regression analysis was not performed, and where univariate logistic regression is non-significant, the variable is consequently not added in multivariate analysis. FLI is used as continuous variable. M30 > 200 and M65 > 400 means that variables are used as categorical predictors with the cutoff, as specified in the methods section. In multivariate analysis, only FLI was included in the model considering M65, M30 being non-significant in the univariate analysis.

The distribution of CK18 M65 and M30 levels in overall PREVENTD subjects dichotomized according to the FLI  $\geq$  and <60, the FRS (FRS very high risk vs. low-moderate high risk) and SCORE 2 (SCORE2 very high-risk vs. low-moderate high risk) is illustrated in Figure 2. CK18 (M30) and CK18 (M65) levels were higher in participants with an FLI  $\geq$  60 vs. an FLI < 60 and in participants with a very high risk vs. participants with a low-moderate high risk according to FRS, but were not significantly different upon dichotomization according to SCORE2.



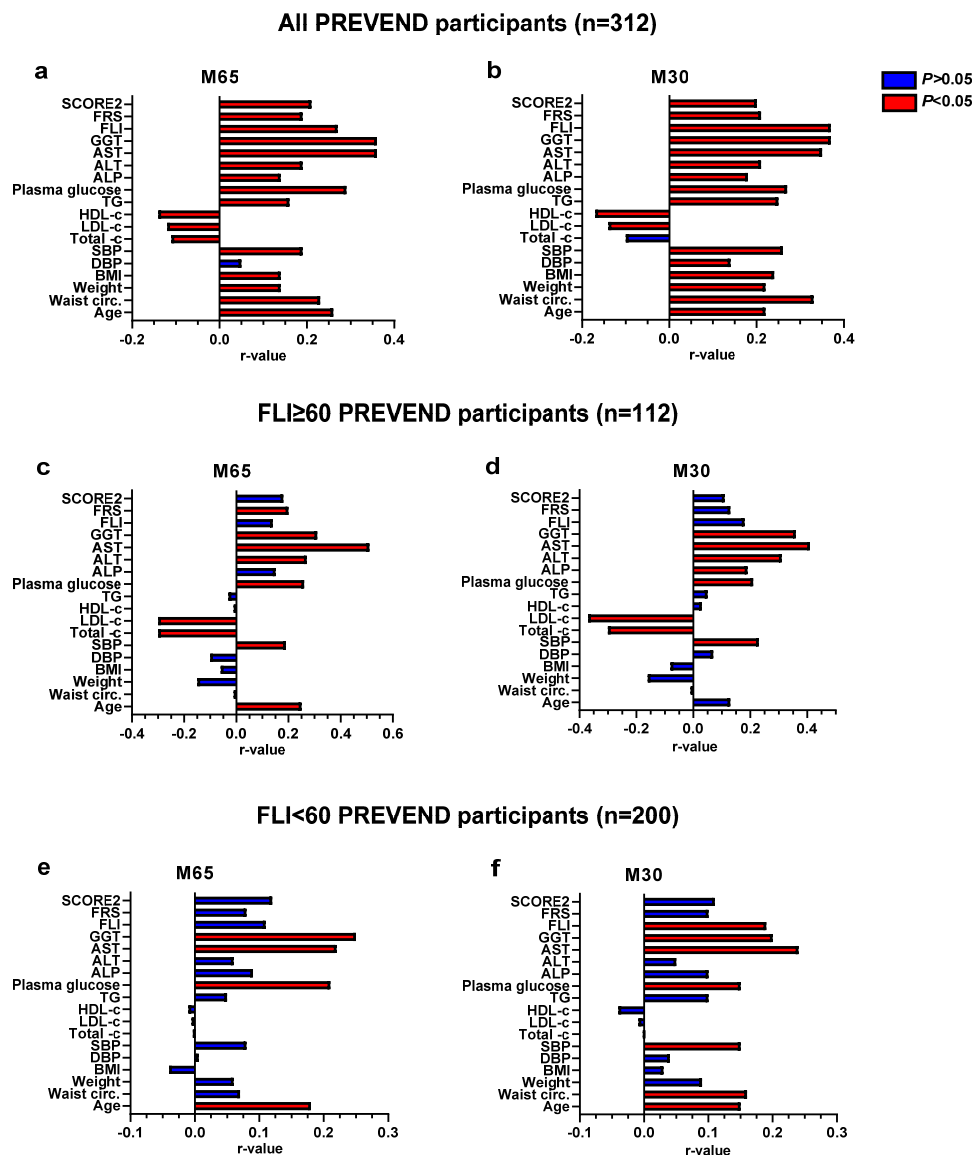
**Figure 2.** CK18 (M30 and M65) levels in PREVENTD subjects dichotomized according to FLI, FRS, and SCORE2. M30 and M65 levels were higher in FLI  $\geq$  60 and FRS  $\geq$  20 groups compared to FLI < 60 and FRS < 20 groups but not different according to SCORE2. Bars indicate median and interquartile range. Results are expressed as individual values and bars. The bars represent medians and interquartile ranges. *p*-value by Mann–Whitney test. \*\*\*\* *p* < 0.0001 and ##### *p* < 0.0001; \*\* *p* = 0.0027 and ## *p* = 0.0025; and ns: *p* = 0.14 (M30) and ns: *p* = 0.45 (M65).

#### 3.4. Determinants of CK18 Associations with Cardiovascular Disease Risk Scores and FLI

In the overall cohort, Spearman analyses indicated positive correlations between M30 and M65 with most of the hepatic and cardiometabolic parameters, including the FLI, FRS, and SCORE2 with inverse correlations for total-c, LDL-c, and HDL-c (Figure 3 panels a and b). Many of these associations were lost in the FLI  $\geq$  60 or FLI < 60 subgroups (Figure 3, panels c, d, e, and f). In the FLI  $\geq$  60 subgroup, the significant positive correlations between M30



and M60 with liver function enzymes were maintained, as well as the significant negative associations with total cholesterol and LDL-C. In the FLI < 60 subgroup, M30 and M65 were associated with plasma glucose, AST, and GGT. In addition, M30 was associated with systolic blood pressure (SBP), waist circumference, and the FLI (Figure 3, panel f).



**Figure 3.** Spearman's rank correlation between levels of CK18 (M65 and M30) and clinical characteristics of PREVEND participants. Panels (a,c,e) exhibit the correlations between M65 levels and clinical characteristics of all PREVEND participants, FLI  $\geq 60$  individuals, and FLI < 60 individuals, respectively. Panels (b,d,f) exhibit the correlations between M30 levels and clinical characteristics of all PREVEND participants, FLI  $\geq 60$  individuals, and FLI < 60 individuals, respectively. The bar charts show the r-values (positively and negatively) of CK18 (M65) and CK18 (M30). In red: significant correlation coefficients at  $p < 0.05$ . In blue: non-significant correlation coefficients ( $p > 0.05$ ). Exact  $p$ -values are shown in Supplemental Table S2.

In order to further delineate associations between M30 and M65 with FRS, SCORE2, or FLI, we performed univariate and multivariate linear regression analyses on the three groups of PREVEND participants (Table 4). In the 312 subjects, combined univariate linear regression analyses demonstrated that M30, M65, and FLI were associated with FRS or SCORE2 and that M30 and M65 were associated with FLI (Table 4). However, in multivariate analyses, only FLI was significantly associated with FRS, while both FLI and

M65 were significantly associated with SCORE2 (Table 4). In addition, M30 and M65 were associated with FLI ( $\beta = 0.41$ ,  $p = 0.0001$ ;  $\beta = 0.23$ ,  $p = 0.03$ , respectively).

**Table 4.** Linear regression analysis using CK18 (M30 and M65) and FLI as independent variables for FRS or SCORE2 as dependent variables and using M30 and M65 as independent variables for FLI as dependent variables in PREVENT participants.

All PREVENT Participants (n = 312)				
Univariate Analysis			Multivariate Analysis	
Variable	$\beta$ (95% CI)	p-Value	$\beta$ (95% CI)	p-Value
<b>FRS</b>				
M30	0.27	0.0008	−0.009	0.91
M65	0.31	0.00012	0.14	0.08
FLI	0.41	<0.0001	0.39	<0.0001
<b>SCORE2</b>				
M30	0.27	0.0006	0.01	0.86
M65	0.34	<0.0001	0.20	0.02
FLI	0.33	<0.0001	0.30	<0.0001
<b>FLI</b>				
M30	0.53	<0.0001	0.41	0.0001
M65	0.44	<0.0001	0.23	0.03
FLI $\geq$ 60 PREVENT Participants (n = 112)				
Univariate Analysis			Multivariate Analysis	
Variable	$\beta$ (95% CI)	p-Value	$\beta$ (95% CI)	p-Value
<b>FRS</b>				
M30	0.09	0.43	−0.09	0.54
M65	0.19	0.05	0.20	0.12
FLI	1.2	0.003	1.15	0.007
<b>SCORE2</b>				
M30	0.09	0.48	−0.20	0.20
M65	0.28	0.01	0.37	0.01
FLI	0.98	0.03	0.81	0.08
<b>FLI</b>				
M30	0.02	0.27	0.004	0.88
M65	0.03	0.12	0.032	0.28
FLI < 60 PREVENT Participants (n = 200)				
Univariate Analysis			Multivariate Analysis	
Variable	$\beta$ (95% CI)	p-Value	$\beta$ (95% CI)	p-Value
<b>FRS</b>				
M30	0.13	0.17	0.01	0.91
M65	0.14	0.19	0.09	0.41
FLI	0.37	<0.0001	0.36	<0.0001
<b>SCORE2</b>				
M30	0.20	0.04	0.10	0.43
M65	0.20	0.06	0.11	0.24
FLI	0.31	<0.0001	0.06	<0.0001
<b>FLI</b>				
M30	0.27	0.01	0.25	0.02
M65	0.14	0.23	0.04	0.70

$\beta$  unstandardized regression coefficient; CI, confidence interval; FRS, Framingham risk score; SCORE: Systematic COronary Risk Evaluation; and FLI, fatty liver index. Because of the no normal distribution of all considered variables, data were transformed into logarithmic values.

In the  $FLI \geq 60$  group (Table 4), univariate linear regression analysis indicated that only the FLI was associated with the FRS while M65 and the FLI were associated with SCORE2; the associations of M30 and M65 with FLI were lost ( $\beta = 0.004$ ,  $p = 0.88$ ;  $\beta = 0.03$ , and  $p = 0.28$ , respectively). In multivariate analyses, the FLI was independently associated with the FRS, and the FLI and M65 were independently associated with SCORE2 (Table 4). The same analyses performed on participants with  $FLI < 60$  highlighted that only the FLI was independently associated with FRS or SCORE2 and that only M30 was associated with the FLI (Table 4).

#### 4. Discussion

The first important finding of the present study is that the FLI, a validated biochemically derived index recommended for large-scale NAFLD screening in the general population [7,9,32,40], represents an independent CVD risk predictor, further lending weight to the cumulative body of evidence showing that NAFLD is associated with an increased CVD risk [11,41–43]. Our current results showing an association between an elevated FLI and CVD risk according to FRS corroborate and extend recent findings derived from Korean [44] and European populations [45]. Our results also showed that the prevalence of elevated FLI in the general population is similar to what has been previously reported [9,32]. Interestingly, we found that in the context of an  $FLI \geq 60$ , this independent association could not be reproduced with SCORE2, possibly due to model calibration differences between FRS and SCORE2 [39]. The FRS has been developed in the United States [33], while SCORE2 has been recently derived to estimate 10-year fatal and non-fatal cardiovascular disease (CVD) risk in individuals from Europe [34]. Whether a calibration or any other non-mutually exclusive issues underlie such a discrepancy in our European general population study is still unknown and warrants further scrutiny. The discordance in those results could be seen as a relevant finding of our study given that the PREVEND cohort originates from the North of Europe, and consequently, SCORE2 may be a more suitable algorithm to use for CVD risk estimation.

The second important finding of this work is that total CK18 (M65) was found to be associated with a very high CVD risk according to the SCORE2, both particularly in individuals with an  $FLI \geq 60$ . Consistent with previous studies [25,29,46], our linear regression and Spearman analyses showed that M30 and M65 were independently associated with the FLI and with several cardiometabolic parameters, especially in the overall study population where M30 and M65 were significantly associated with almost all the parameters studied and with both CVD risk scores, while when considering the same associations in participants with  $FLI \geq 60$ , M30 and M65 were significantly associated only with liver function enzymes (ALT, AST, and GGT) and only M65 was associated with FRS.

Extending previous observations reporting higher levels of CK18 (M30 and M65) in NAFLD subjects compared to healthy subjects [25,29,46] and even more in steatohepatitis [41], this is, to our knowledge, the first demonstration indicating that CK18 (M30) predicts FLI-suspected NAFLD, except for a very recently shown relationship of CK (M30) with the FLI as a continuous parameter [47], and that CK-18 (M65) predicts 10-year CVD risk independently of FLI if the SCORE2 algorithm is used for CVD risk stratification purposes.

Using the M65 pre-specified and previously validated cutoff set at 400 U/L, the odds of very high CVD would increase by 5-fold (adjusted OR: 5.44;  $p = 0.01$ ). At this cutoff, the NPV of 93.0% indicates that M65 may potentially be useful in a primary care setting to exclude very-high-risk CVD in NAFLD individuals. The potential clinical application needs to be determined in larger multi-center studies.

NAFLD and CVD are both outcomes of end-organ damage caused by metabolic abnormalities commonly captured by metabolic syndrome components such as central obesity, high blood pressure, elevated glucose, elevated triglycerides, and low HDL-c. It is challenging to determine the exact impact of NAFLD per se on increased CVD risk, as both conditions share common risk factors that contribute to this heightened risk [48]. The

connections between NAFLD and CVD involve intricate and interrelated mechanisms that operate through multiple pathways simultaneously [48].

In this scenario, CK18 (M30 and M65) could be a marker not only of liver cell death but also of damaged cardiomyocytes that lose cellular integrity during response to abnormal cellular stresses such as endoplasmic reticulum stress and oxidative stress, which are recognized as key features of cardiometabolic disorders [26,27].

Endothelial apoptosis can lead to endothelial dysfunction and the development of hypertension [49]. Apoptosis of cardiomyocytes is associated with both the aging process and chronic cardiac overload [50] and plays a substantial role in altering cardiac geometry and progressively deteriorating myocardial function, potentially leading to chronic cardiomyopathy and advanced heart failure [51]. A recent study reported that CK18 (M30) level was highly correlated to left ventricular (LV) diastolic dysfunction in adolescents with obesity [52], although CK18 (M65) had not been investigated. In addition, another study determined the relationship between the development of LV remodeling and CK18 (M30) but not CK18 (M65) in patients with anterior ST-segment elevation myocardial infarction [53]. In this study, the cutoff used for CK18 (M30) was 144.9 U/L, different from what we used (200 U/L), and they retrieved an AUC of 0.893 for CK18 (M30) level for predicting LV remodeling [53]. In an effort to assess patients with acute coronary syndrome (ACS), including unstable angina and acute myocardial infarction (AMI), as well as patients with stable angina, serum levels of CK18 (M30 and M65) were measured [23]. In addition, among patients with an acute coronary syndrome and stable angina, it was found that only CK (M30) levels accurately reflected the severity of coronary artery disease in acute myocardial infarction patients [23]. Collectively, these studies consistently indicate that CK (M30) is a more reliable marker for acute myocardial events.

Our findings emphasize the association between CK18 (M65) and a higher risk of CVD, likely due to the ability of CK (M65) to detect cell death across various forms, including apoptosis, necrosis, and autophagy, and not only apoptosis, as CK18 (M30) can detect.

In conclusion, the present results show that CK18 (M30) is a predictor of the FLI suspected NAFLD, confirming that the FLI is an independent predictor of a high 10-year CV risk according to both the FRS and the SCORE2 algorithm. Furthermore, this hypothesis-generating study indicates that CK18 (M65) measurement could help to exclude a very-high CVD risk in NAFLD individuals, based on a negative predictive value of 93% for CK18 (M65) > 400 U/L. Further research is needed to validate these findings, support M65's clinical significance, and clarify these observed associations in a longitudinal design.

**Limitations of the study.** Firstly, our cross-sectional observational study included a relatively limited number of randomly selected PREVEND participants, raising the possibility of selection bias. Given the fact that both the prevalence of the FLI-based NAFLD suspicion in the present study and the FLI associations with cardiometabolic features were similar to what was previously reported using data from PREVEND and from other European populations [6,10,40], we consider that such an issue is unlikely to have blunted the present results. Nonetheless, our current preliminary findings should be considered to be hypothesis-generating. Secondly, although the FLI is an accepted diagnostic proxy for NAFLD categorization in population studies [5–7], it remains a surrogate indicator of hepatic fat accumulation, with liver biopsy being the most accurate and reliable tool for assessing the presence and severity of NAFLD. Thirdly, we could not further validate our findings by taking into account other well-validated indirect indices of liver fibrosis, such as the FIB-4 score [4], due to the lack of appropriate sampling for platelet counts upon study inclusion. For this reason, our study does not allow for a conclusion regarding the association of CK18 with liver fibrosis.

**Supplementary Materials:** The following supporting information can be downloaded at <https://www.mdpi.com/article/10.3390/biom13071128/s1>. Table S1. Performance of CK18 (categorical or continuous value) in predicting FLI  $\geq 60$  in PREVEND participants. Table S2. *p*-Value for Spearman's rank correlation between levels of CK18 (M30 and M65) and clinical characteristics of PREVEND participants.

**Author Contributions:** Conceptualization, S.P. and N.V.; methodology, S.P. and N.V.; software, S.P., N.V. and S.J.L.B.; validation, S.P., S.J.L.B., R.P.F.D. and N.V.; formal analysis, S.P. and C.J.; investigation, S.P. and C.J.; resources, S.J.L.B., R.P.F.D. and N.V.; data curation, S.P., S.J.L.B. and R.P.F.D.; writing—original draft preparation, S.P. and N.V.; writing—review and editing, S.P., N.V., S.J.L.B. and R.P.F.D.; supervision, N.V. and R.P.F.D.; project administration, N.V. All authors have read and agreed to the published version of the manuscript.

**Funding:** This research received no external funding.

**Institutional Review Board Statement:** The study was conducted according to the guidelines of the Declaration of Helsinki and approved by the Institutional Review Board (or Ethics Committee) of the University of Groningen, The Netherlands (Medisch Ethische Toetsingscommissie, abbreviated Metc) protocol No. 01/139.

**Informed Consent Statement:** Informed consent was obtained from all subjects involved in the study.

**Data Availability Statement:** Data are available upon reasonable request.

**Acknowledgments:** The authors express their thanks to the participants of the PREVEND study.

**Conflicts of Interest:** The authors disclose no conflict.

## References

- Chalasani, N.; Younossi, Z.; Lavine, J.E.; Charlton, M.; Cusi, K.; Rinella, M.; Harrison, S.A.; Brunt, E.M.; Sanyal, A.J. The Diagnosis and Management of Nonalcoholic Fatty Liver Disease: Practice Guidance from the American Association for the Study of Liver Diseases. *Hepatology* **2018**, *67*, 328–357. [[CrossRef](#)] [[PubMed](#)]
- Younossi, Z.; Anstee, Q.M.; Marietti, M.; Hardy, T.; Henry, L.; Eslam, M.; George, J.; Bugianesi, E. Global Burden of Nafld and Nash: Trends, Predictions, Risk Factors and Prevention. *Nat. Rev. Gastroenterol. Hepatol.* **2018**, *15*, 11–20. [[CrossRef](#)] [[PubMed](#)]
- Younossi, Z.M.; Blissett, D.; Blissett, R.; Henry, L.; Stepanova, M.; Younossi, Y.; Racila, A.; Hunt, S.; Beckerman, R. The Economic and Clinical Burden of Nonalcoholic Fatty Liver Disease in the United States and Europe. *Hepatology* **2016**, *64*, 1577–1586. [[CrossRef](#)] [[PubMed](#)]
- Benedict, M.; Zhang, X. Non-Alcoholic Fatty Liver Disease: An Expanded Review. *World J. Hepatol.* **2017**, *9*, 715–732. [[CrossRef](#)] [[PubMed](#)]
- Loomba, R.; Sanyal, A.J. The Global Nafld Epidemic. *Nat. Rev. Gastroenterol. Hepatol.* **2013**, *10*, 686–690. [[CrossRef](#)] [[PubMed](#)]
- Segura-Azuara, N.L.A.; Varela-Chinchilla, C.D.; Trinidad-Calderon, P.A. Mafld/Nafld Biopsy-Free Scoring Systems for Hepatic Steatosis, Nash, and Fibrosis Diagnosis. *Front. Med.* **2021**, *8*, 774079. [[CrossRef](#)]
- Bedogni, G.; Bellentani, S.; Miglioli, L.; Masutti, F.; Passalacqua, M.; Castiglione, A.; Tiribelli, C. The Fatty Liver Index: A Simple and Accurate Predictor of Hepatic Steatosis in the General Population. *BMC Gastroenterol.* **2006**, *6*, 33. [[CrossRef](#)]
- Gastaldelli, A.; Kozakova, M.; Hojlund, K.; Flyvbjerg, A.; Favuzzi, A.; Mitrakou, A.; Balkau, B.; RISC Investigators. Fatty Liver Is Associated with Insulin Resistance, Risk of Coronary Heart Disease, and Early Atherosclerosis in a Large European Population. *Hepatology* **2009**, *49*, 1537–1544. [[CrossRef](#)]
- van den Berg, E.H.; Amini, M.; Schreuder, T.C.; Dullaart, R.P.; Faber, K.N.; Alizadeh, B.Z.; Blokzijl, H. Prevalence and Determinants of Non-Alcoholic Fatty Liver Disease in Lifelines: A Large Dutch Population Cohort. *PLoS ONE* **2017**, *12*, e0171502. [[CrossRef](#)]
- Armstrong, M.J.; Adams, L.A.; Canbay, A.; Syn, W.K. Extrahepatic Complications of Nonalcoholic Fatty Liver Disease. *Hepatology* **2014**, *59*, 1174–1197. [[CrossRef](#)]
- Targher, G.; Tilg, H.; Byrne, C.D. Non-Alcoholic Fatty Liver Disease: A Multisystem Disease Requiring a Multidisciplinary and Holistic Approach. *Lancet Gastroenterol. Hepatol.* **2021**, *6*, 578–588. [[CrossRef](#)]
- van den Berg, E.H.; Flores-Guerrero, J.L.; Gruppen, E.G.; de Borst, M.H.; Wolak-Dinsmore, J.; Connelly, M.A.; Bakker, S.J.L.; Dullaart, R.P.F. Non-Alcoholic Fatty Liver Disease and Risk of Incident Type 2 Diabetes: Role of Circulating Branched-Chain Amino Acids. *Nutrients* **2019**, *11*, 705. [[CrossRef](#)] [[PubMed](#)]
- Targher, G.; Day, C.P.; Bonora, E. Risk of Cardiovascular Disease in Patients with Nonalcoholic Fatty Liver Disease. *N. Engl. J. Med.* **2010**, *363*, 1341–1350. [[CrossRef](#)] [[PubMed](#)]
- Eguchi, A.; Wree, A.; Feldstein, A.E. Biomarkers of Liver Cell Death. *J. Hepatol.* **2014**, *60*, 1063–1074. [[CrossRef](#)] [[PubMed](#)]
- Ueno, T.; Toi, M.; Linder, S. Detection of Epithelial Cell Death in the Body by Cytokeratin 18 Measurement. *Biomed. Pharmacother.* **2005**, *59* (Suppl. 2), S359–S362. [[CrossRef](#)]
- Schutte, B.; Henfling, M.; Kolgen, W.; Bouman, M.; Meex, S.; Leers, M.P.; Nap, M.; Bjorklund, V.; Bjorklund, P.; Bjorklund, B.; et al. Keratin 8/18 Breakdown and Reorganization During Apoptosis. *Exp. Cell. Res.* **2004**, *297*, 11–26. [[CrossRef](#)]
- Cummings, J.; Ranson, M.; Butt, F.; Moore, D.; Dive, C. Qualification of M30 and M65 Elis as Surrogate Biomarkers of Cell Death: Long Term Antigen Stability in Cancer Patient Plasma. *Cancer Chemother. Pharmacol.* **2007**, *60*, 921–924. [[CrossRef](#)]
- Kramer, G.; Schwarz, S.; Hagg, M.; Havelka, A.M.; Linder, S. Docetaxel Induces Apoptosis in Hormone Refractory Prostate Carcinomas During Multiple Treatment Cycles. *Br. J. Cancer* **2006**, *94*, 1592–1598. [[CrossRef](#)]



19. Monserrat-Mesquida, M.; Quetglas-Llabres, M.; Abbate, M.; Montemayor, S.; Mascaro, C.M.; Casares, M.; Tejada, S.; Abete, I.; Zulet, M.A.; Tur, J.A.; et al. Oxidative Stress and Pro-Inflammatory Status in Patients with Non-Alcoholic Fatty Liver Disease. *Antioxidants* **2020**, *9*, 759. [\[CrossRef\]](#)
20. Sahebkar, A.; Sancho, E.; Abello, D.; Camps, J.; Joven, J. Novel Circulating Biomarkers for Non-Alcoholic Fatty Liver Disease: A Systematic Review. *J. Cell. Physiol.* **2018**, *233*, 849–855. [\[CrossRef\]](#)
21. Kosasih, S.; Qin, W.Z.; Rani, R.A.; Abd Hamid, N.; Soon, N.C.; Shah, S.A.; Yaakob, Y.; Ali, R.A.R. Relationship between Serum Cytokeratin-18, Control Attenuation Parameter, Nafld Fibrosis Score, and Liver Steatosis in Nonalcoholic Fatty Liver Disease. *Int. J. Hepatol.* **2018**, *2018*, 9252536. [\[CrossRef\]](#) [\[PubMed\]](#)
22. Jahn, L.; Franke, W.W. High Frequency of Cytokeratin-Producing Smooth Muscle Cells in Human Atherosclerotic Plaques. *Differentiation* **1989**, *40*, 55–62. [\[CrossRef\]](#)
23. Senturk, T.; Aydinlar, A.; Yilmaz, Y.; Oral, A.Y.; Ozdabakoglu, O.; Ulukaya, E. Serial Changes in Circulating M30 Antigen, a Biomarker of Apoptosis, in Patients with Acute Coronary Syndromes: Relationship with the Severity of Coronary Artery Disease. *Coron. Artery Dis.* **2009**, *20*, 494–498. [\[CrossRef\]](#)
24. Roth, G.A.; Leberherz-Eichinger, D.; Ankersmit, H.J.; Hacker, S.; Hetz, H.; Vukovich, T.; Perne, A.; Reiter, T.; Farr, A.; Horl, W.H.; et al. Increased Total Cytokeratin-18 Serum and Urine Levels in Chronic Kidney Disease. *Clin. Chim. Acta* **2011**, *412*, 713–717. [\[CrossRef\]](#) [\[PubMed\]](#)
25. Chang, Y.H.; Lin, H.C.; Hwu, D.W.; Chang, D.M.; Lin, K.C.; Lee, Y.J. Elevated Serum Cytokeratin-18 Concentration in Patients with Type 2 Diabetes Mellitus and Non-Alcoholic Fatty Liver Disease. *Ann. Clin. Biochem.* **2019**, *56*, 141–147. [\[CrossRef\]](#) [\[PubMed\]](#)
26. Dalleau, S.; Baradat, M.; Gueraud, F.; Huc, L. Cell Death and Diseases Related to Oxidative Stress: 4-Hydroxynonenal (Hne) in the Balance. *Cell. Death Differ.* **2013**, *20*, 1615–1630. [\[CrossRef\]](#)
27. Ozcan, L.; Tabas, I. Role of Endoplasmic Reticulum Stress in Metabolic Disease and Other Disorders. *Annu. Rev. Med.* **2012**, *63*, 317–328. [\[CrossRef\]](#)
28. Swisa, A.; Glaser, B.; Dor, Y. Metabolic Stress and Compromised Identity of Pancreatic Beta Cells. *Front. Genet.* **2017**, *8*, 21. [\[CrossRef\]](#)
29. Qian, L.; Zhang, L.; Wu, L.; Zhang, J.; Fang, Q.; Hou, X.; Gao, Q.; Li, H.; Jia, W. Elevated Serum Level of Cytokeratin 18 M65ed Is an Independent Indicator of Cardiometabolic Disorders. *J. Diabetes Res.* **2020**, *2020*, 5198359. [\[CrossRef\]](#)
30. Kappelle, P.J.W.H.; Gansevoort, R.T.; Hillege, J.L.; Wolffenbuttel, B.H.R.; Dullaart, R.P.F.; PREVEND Study group. Apolipoprotein B/a-I and Total Cholesterol/High-Density Lipoprotein Cholesterol Ratios Both Predict Cardiovascular Events in the General Population Independently of Nonlipid Risk Factors, Albuminuria and C-Reactive Protein. *J. Intern. Med.* **2011**, *269*, 232–242. [\[CrossRef\]](#)
31. Damba, T.; Bourgonje, A.R.; Abdulle, A.E.; Pasch, A.; Sydor, S.; van den Berg, E.H.; Gansevoort, R.T.; Bakker, S.J.L.; Blokzijl, H.; Dullaart, R.P.F.; et al. Oxidative Stress Is Associated with Suspected Non-Alcoholic Fatty Liver Disease and All-Cause Mortality in the General Population. *Liver Int.* **2020**, *40*, 2148–2159. [\[CrossRef\]](#) [\[PubMed\]](#)
32. Post, A.; Garcia, E.; van den Berg, E.H.; Flores-Guerrero, J.L.; Gruppen, E.G.; Groothof, D.; Westenbrink, B.D.; Connelly, M.A.; Bakker, S.J.L.; Dullaart, R.P.F. Nonalcoholic Fatty Liver Disease, Circulating Ketone Bodies and All-Cause Mortality in a General Population-Based Cohort. *Eur. J. Clin. Investig.* **2021**, *51*, e13627. [\[CrossRef\]](#) [\[PubMed\]](#)
33. D'Agostino, R.B.; Vasan, R.S.; Pencina, M.J.; Wolf, P.A.; Cobain, M.; Massaro, J.M.; Kannel, W.B. General Cardiovascular Risk Profile for Use in Primary Care: The Framingham Heart Study. *Circulation* **2008**, *117*, 743–753. [\[CrossRef\]](#) [\[PubMed\]](#)
34. SCORE2 working group and ESC Cardiovascular risk collaboration. Cardiovascular risk. Score2 Risk Prediction Algorithms: New Models to Estimate 10-Year Risk of Cardiovascular Disease in Europe. *Eur. Heart J.* **2021**, *42*, 2439–2454. [\[CrossRef\]](#) [\[PubMed\]](#)
35. Bosomworth, N.J. Practical Use of the Framingham Risk Score in Primary Prevention: Canadian Perspective. *Can. Fam. Physician* **2011**, *57*, 417–423. [\[PubMed\]](#)
36. Sohn, C.; Kim, J.; Bae, W. The Framingham Risk Score, Diet, and Inflammatory Markers in Korean Men with Metabolic Syndrome. *Nutr. Res. Pract.* **2012**, *6*, 246–253. [\[CrossRef\]](#)
37. Lee, J.; Vali, Y.; Boursier, J.; Duffin, K.; Verheij, J.; Brosnan, M.J.; Zwinderman, K.; Anstee, Q.M.; Bossuyt, P.M.; Zafarmand, M.H. Accuracy of Cytokeratin 18 (M30 and M65) in Detecting Non-Alcoholic Steatohepatitis and Fibrosis: A Systematic Review and Meta-Analysis. *PLoS ONE* **2020**, *15*, e0238717. [\[CrossRef\]](#)
38. Kawanaka, M.; Nishino, K.; Nakamura, J.; Urata, N.; Oka, T.; Goto, D.; Suehiro, M.; Kawamoto, H.; Yamada, G. Correlation between Serum Cytokeratin-18 and the Progression or Regression of Non-Alcoholic Fatty Liver Disease. *Ann. Hepatol.* **2015**, *14*, 837–844. [\[CrossRef\]](#)
39. Pennells, L.; Kaptoge, S.; Wood, A.; Sweeting, M.; Zhao, X.; White, I.; Burgess, S.; Willeit, P.; Bolton, T.; Moons, K.G.M.; et al. Emerging Risk Factors, Collaboration. Equalization of Four Cardiovascular Risk Algorithms after Systematic Recalibration: Individual-Participant Meta-Analysis of 86 Prospective Studies. *Eur. Heart J.* **2019**, *40*, 621–631. [\[CrossRef\]](#)
40. European Association for the Study of the Liver; European Association for the Study of Diabetes; European Association for the Study of Obesity. Easl-Easd-Easo Clinical Practice Guidelines for the Management of Non-Alcoholic Fatty Liver Disease. *J. Hepatol.* **2016**, *64*, 1388–1402. [\[CrossRef\]](#)
41. Altaf, B.; Rehman, A.; Jawed, S.; Raouf, A. Association of Liver Biomarkers and Cytokeratin-18 in Nonalcoholic Fatty Liver Disease Patients. *Pak. J. Med. Sci.* **2020**, *36*, 387–390. [\[CrossRef\]](#)

42. Kasper, P.; Martin, A.; Lang, S.; Kutting, F.; Goeser, T.; Demir, M.; Steffen, H.M. Nafld and Cardiovascular Diseases: A Clinical Review. *Clin. Res. Cardiol.* **2021**, *110*, 921–937. [[CrossRef](#)] [[PubMed](#)]
43. Targher, G.; Byrne, C.D.; Tilg, H. Nafld and Increased Risk of Cardiovascular Disease: Clinical Associations, Pathophysiological Mechanisms and Pharmacological Implications. *Gut* **2020**, *69*, 1691–1705. [[CrossRef](#)] [[PubMed](#)]
44. Kim, J.H.; Moon, J.S.; Byun, S.J.; Lee, J.H.; Kang, D.R.; Sung, K.C.; Kim, J.Y.; Huh, J.H. Fatty Liver Index and Development of Cardiovascular Disease in Koreans without Pre-Existing Myocardial Infarction and Ischemic Stroke: A Large Population-Based Study. *Cardiovasc. Diabetol.* **2020**, *19*, 51. [[CrossRef](#)] [[PubMed](#)]
45. Kunutsor, S.K.; Bakker, S.J.L.; Blokzijl, H.; Dullaart, R.P.F. Associations of the Fatty Liver and Hepatic Steatosis Indices with Risk of Cardiovascular Disease: Interrelationship with Age. *Clin. Chim. Acta* **2017**, *466*, 54–60. [[CrossRef](#)]
46. Rasool, A.; Qadir, A.; Sahar, T.; Khan, M.A. Correlation of Cytokeratin-18 as a Marker of Cardiovascular Risk Assessment in Nonalcoholic Fatty Liver Disease in Nonobese and Nondiabetic Patients: Two Years Prospective Study. *Asian J. Pharm. Res. Health Care* **2022**, *14*, 177–180. [[CrossRef](#)]
47. Goralska, J.; Razny, U.; Gruca, A.; Zdzienicka, A.; Micek, A.; Dembinska-Kiec, A.; Solnica, B.; Malczewska-Malec, M. Plasma Cytokeratin-18 Fragment Level Reflects the Metabolic Phenotype in Obesity. *Biomolecules* **2023**, *13*, 675. [[CrossRef](#)]
48. Stahl, E.P.; Dhindsa, D.S.; Lee, S.K.; Sandesara, P.B.; Chalasani, N.P.; Sperling, L.S. Nonalcoholic Fatty Liver Disease and the Heart: Jacc State-of-the-Art Review. *J. Am. Coll. Cardiol.* **2019**, *73*, 948–963. [[CrossRef](#)]
49. Guo, J.; Wang, Z.Y.; Wu, J.C.; Liu, M.; Li, M.M.; Sun, Y.; Huang, W.; Li, Y.J.; Zhang, Y.; Tang, W.; et al. Endothelial Sirt6 Is Vital to Prevent Hypertension and Associated Cardiorenal Injury through Targeting Nkx3.2-Gata5 Signaling. *Circ. Res.* **2019**, *124*, 1448–1461. [[CrossRef](#)]
50. Bing, O.H.L. Hypothesis-Apoptosis May Be a Mechanism for the Transition to Heart-Failure with Chronic Pressure-Overload. *J. Mol. Cell. Cardiol.* **1994**, *26*, 943–948. [[CrossRef](#)]
51. Narula, J.; Haider, N.; Virmani, R.; DiSalvo, T.G.; Kolodgie, F.D.; Hajjar, R.J.; Schmidt, U.; Semigran, M.J.; Dec, G.W.; Khaw, B.A. Apoptosis in Myocytes in End-Stage Heart Failure. *N. Engl. J. Med.* **1996**, *335*, 1182–1189. [[CrossRef](#)] [[PubMed](#)]
52. Yang, M.C.; Liu, H.K.; Su, Y.T.; Tsai, C.C.; Wu, J.R. Serum Apoptotic Marker M30 Is Positively Correlated with Early Diastolic Dysfunction in Adolescent Obesity. *PLoS ONE* **2019**, *14*, e0217429. [[CrossRef](#)] [[PubMed](#)]
53. Turkoglu, C.; Gur, M.; Seker, T.; Selek, S.; Kocyigit, A. The Predictive Value of M30 and Oxidative Stress for Left Ventricular Remodeling in Patients with Anterior St-Segment Elevation Myocardial Infarction Treated with Primary Percutaneous Coronary Intervention. *Coron. Artery Dis.* **2016**, *27*, 690–695. [[CrossRef](#)] [[PubMed](#)]

**Disclaimer/Publisher’s Note:** The statements, opinions and data contained in all publications are solely those of the individual author(s) and contributor(s) and not of MDPI and/or the editor(s). MDPI and/or the editor(s) disclaim responsibility for any injury to people or property resulting from any ideas, methods, instructions or products referred to in the content.