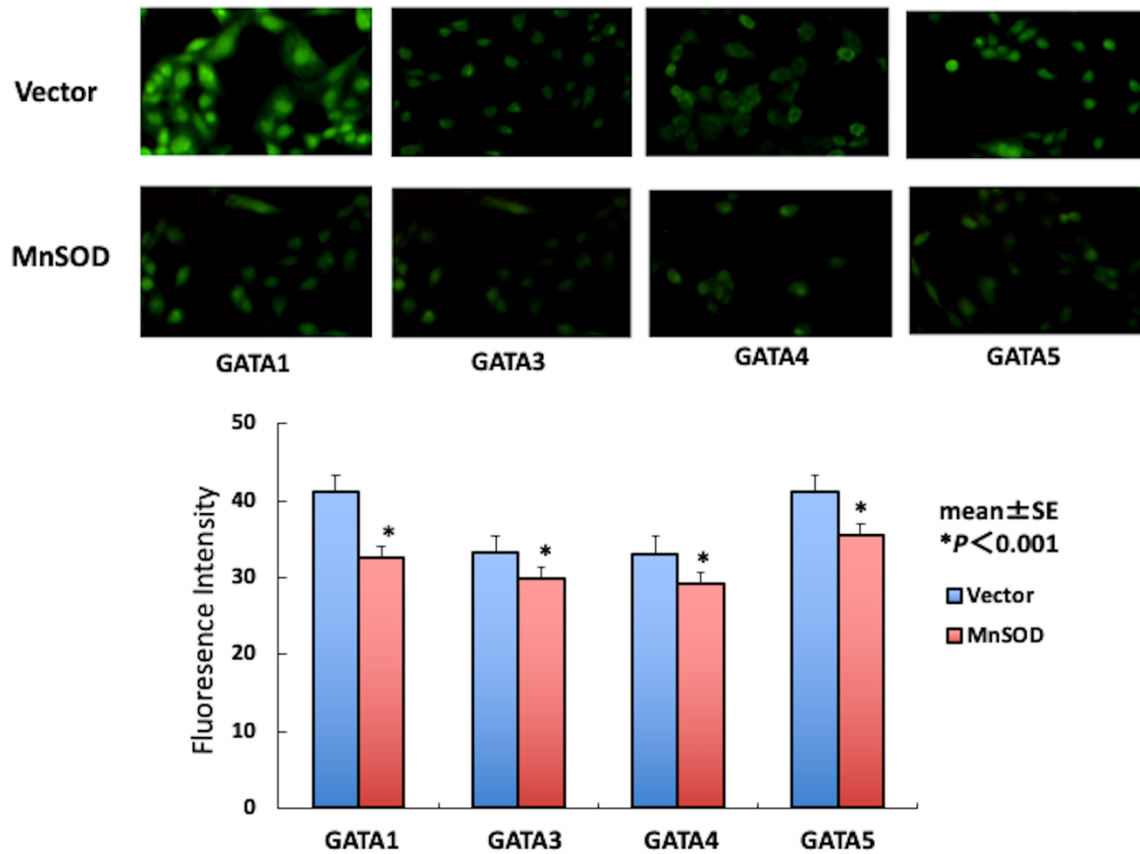
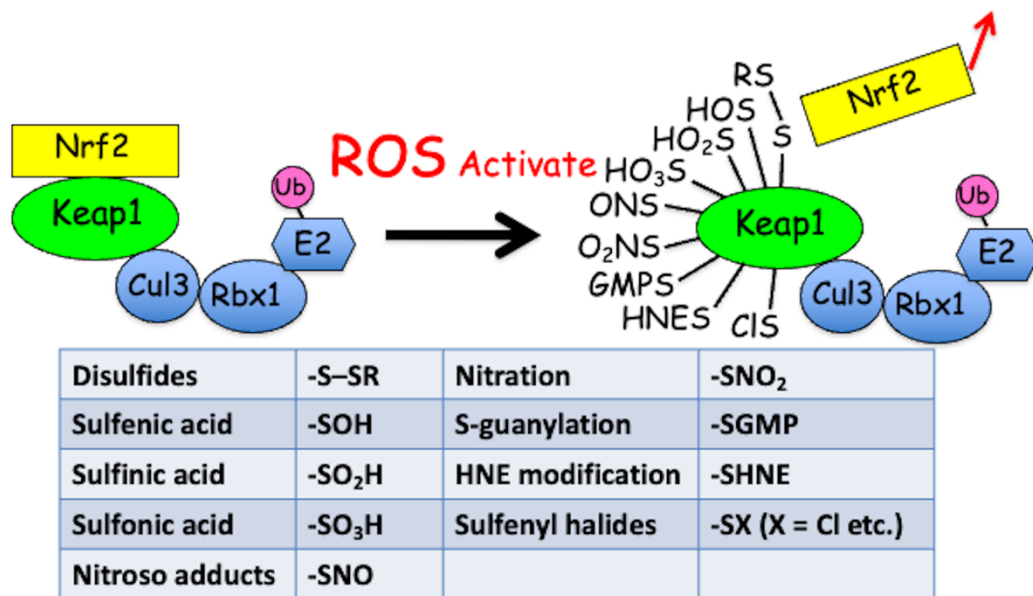


## Supplement materials



**Figure S1.** Results of Immuno-cyto-chemistry Staining detected by GATA1, 3, 4 ,and 5 antibodies. The fluorescence intensity for both HO-1 and HO-2 is significantly greater in RGK1 cells compared with that of RGM1 cells. Bar: mean  $\pm$  S.E.; t-test. \*\*:  $p < 0.001$ . Remounted from Ref. 46 with permission.



**Figure S2.** Schematic figure of fNrf2-keap1 signaling. ROS activate keap1 signaling by keap1 oxidative modification as a results Nrf2 separates from keap1.