

Figure S1. Example of cell populations used for the assays, including proportion of cells and yield

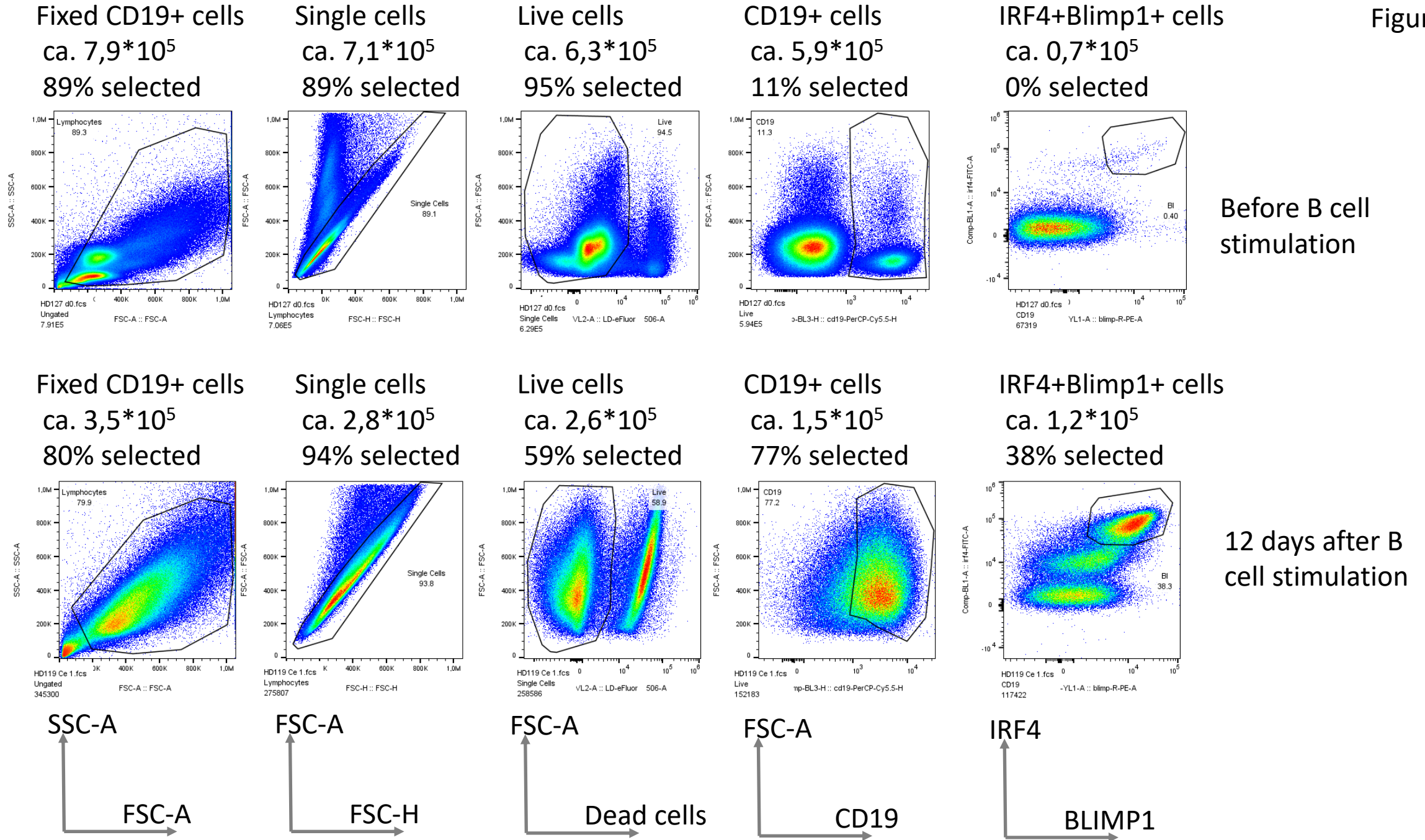


Figure S2. Example of cell populations used for the assays, including proportion of cells and yield

| Experiment # | Alectinib | Brigatinib | Ceritinib | Crizotinib | Entrectinib |
|--------------|-----------|------------|-----------|------------|-------------|
| 1 | 2.0 | 5.5 | 1.7 | 5.9 | 1.4 |
| 2 | 2.2 | 5.7 | 1.8 | 6.2 | 1.4 |
| 3 | 3.5 | 5.7 | 2.0 | 7.5 | 2.9 |
| 4 | 2.1 | 6.2 | 1.5 | 7.2 | 1.5 |
| 5 | 2.5 | 6.4 | 1.6 | 7.7 | 3.2 |
| 6 | 2.6 | 6.3 | 1.7 | 7.9 | 3.1 |
| 7 | 2.4 | | 2.0 | | 5.4 |
| 8 | | | 1.7 | | 4.5 |
| 9 | | | 1.8 | | 4.7 |
| 10 | | | 2.1 | | 5.4 |
| Average±SEM | 2.5±0.2 | 6.0±0.2 | 1.8±0.1 | 7.1±0.3 | 3.4±0.5 |

Figure S3. Summary of several experiments as presented on Figure 1, including Average ± SEM