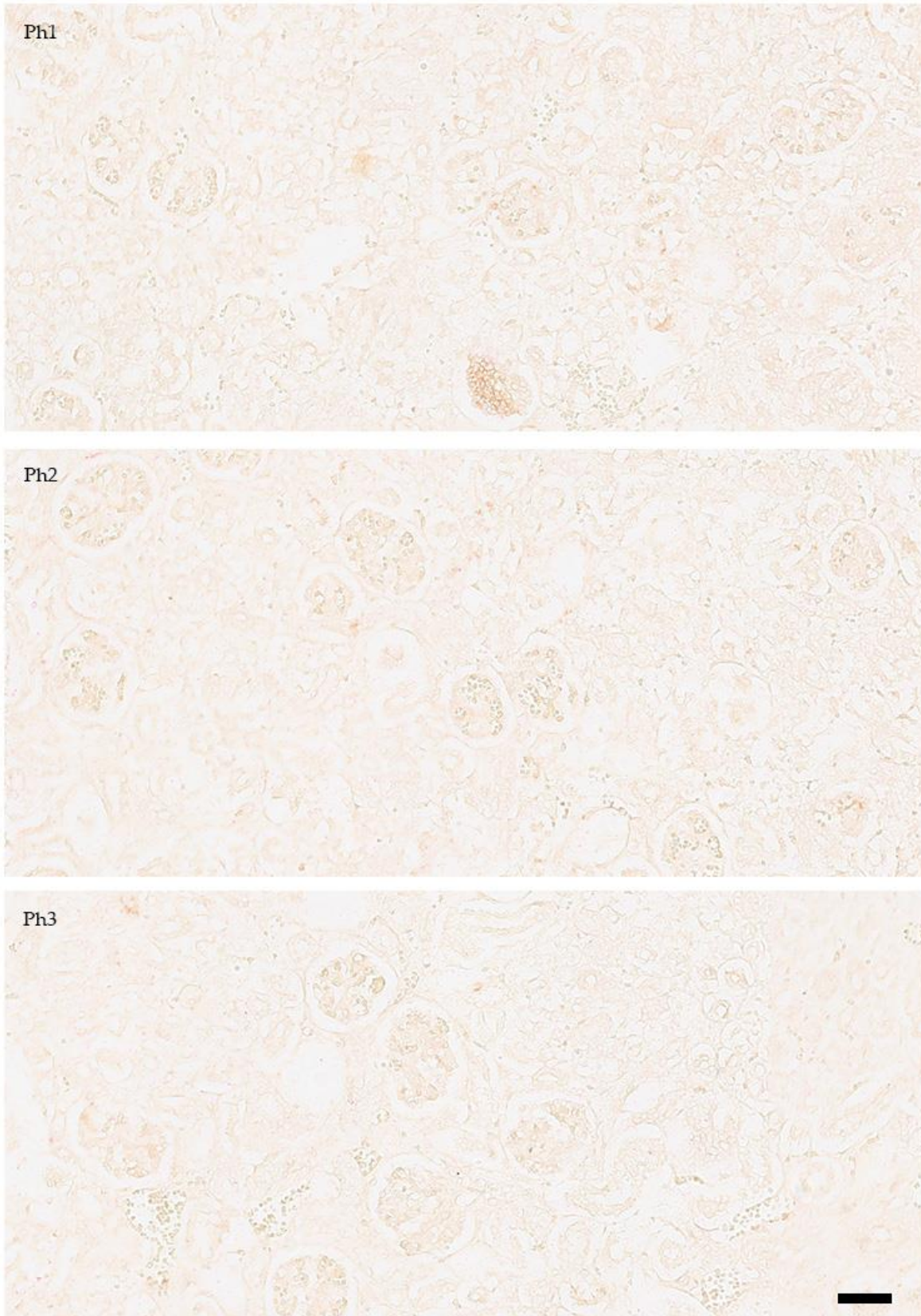


Supplementary Figure S1. Negative control for IHC staining, human fetal (Ph1-4) and postnatal (Ph5) kidneys (for Figures 1 and 5). Magnification 20x. Scale bar is 40 μm .



Supplementary Figure S2. Negative control for co-localization double immunohistochemistry staining, human fetal (Ph1-3) kidneys (for Figure 10). Magnification 20x. Scale bar is 40 μm .