

Supplementary material

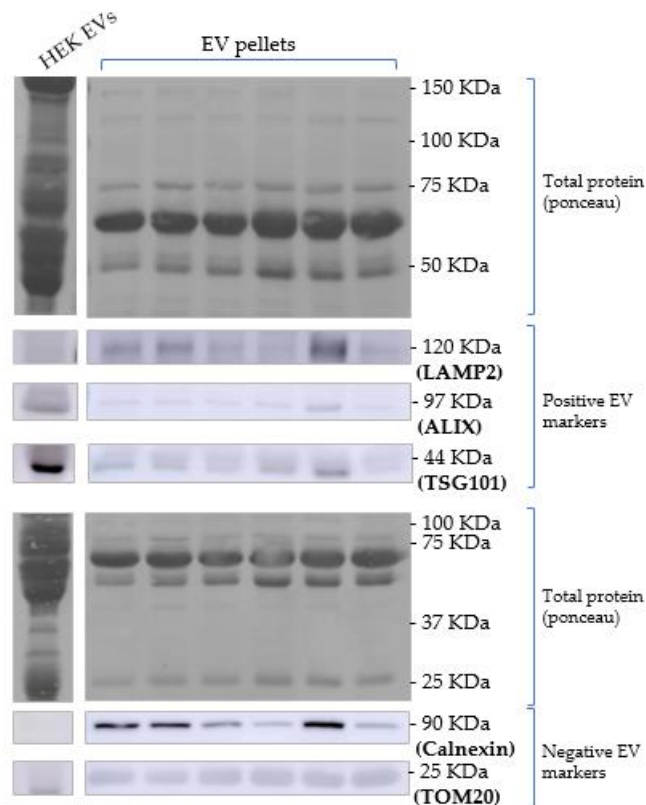


Figure S1 Representative image of western blot membrane of UC pellets showing positive and negative EV markers and the respective ponceau staining. A control lane was added to depict the positive and negative markers as well as the total protein pattern of EVs isolated from HEK cells.

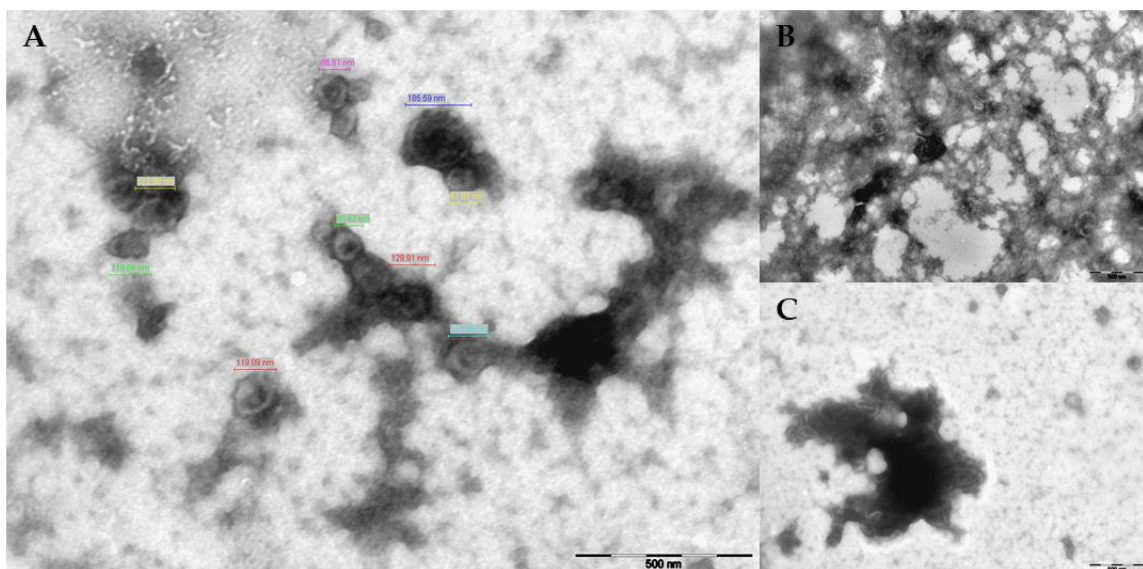


Figure S2 Representative images of EVs isolated through UC obtained by transmission electron microscopy (TEM). (A) TEM image exhibiting diameters measurement showing that the EV particles size range from 80.42 nm to 185.59 nm. (B) Representative TEM image of the protein mesh contamination; (C) Representative TEM image of large EV aggregates.

Table S3 Total protein of 30 SEC fractions of FF from 4 independent biological samples quantified by microBCA.

	FF1 (mg/mL)	FF2 (mg/mL)	FF3 (mg/mL)	FF4 (mg/mL)
F7	0	0	0	0
F8	0	0	0.004717	0
F9	0.001325	0.015428	0.050468	0.007697
F10	0.019986	0.045011	0.084156	0.034759
F11	0.033007	0.055438	0.09622	0.046756
F12	0.060682	0.092524	0.158133	0.054396
F13	0.181768	0.301958	0.515494	0.116247
F14	0.856964	0.926183	1.447908	0.358885
F15	1.872074	2.219889	2.986864	0.892581
F16	3.769814	4.581325	5.194778	2.50209
F17	6.031287	5.892999	7.675836	4.22907
F18	8.614322	8.308743	10.94218	6.85451
F19	9.289074	8.308743	13.11026	8.75903
F20	10.31175	7.836918	11.70471	8.76979
F21	10.47516	7.596287	10.66335	10.60437
F22	9.810953	6.728129	8.563554	9.80275
F23	8.804096	4.916321	9.126914	9.51761
F24	6.700768	4.175556	5.024063	8.18337
F25	5.377621	3.080922	5.889019	5.893985
F26	4.10719	1.943823	2.986864	4.245015
F27	2.794586	1.330451	1.999887	3.462225
F28	1.808816	0.537785	1.186145	2.273245
F29	1.102435	0.3349	0.207379	1.428585
F30	0.643814	0	0.275665	0.941695

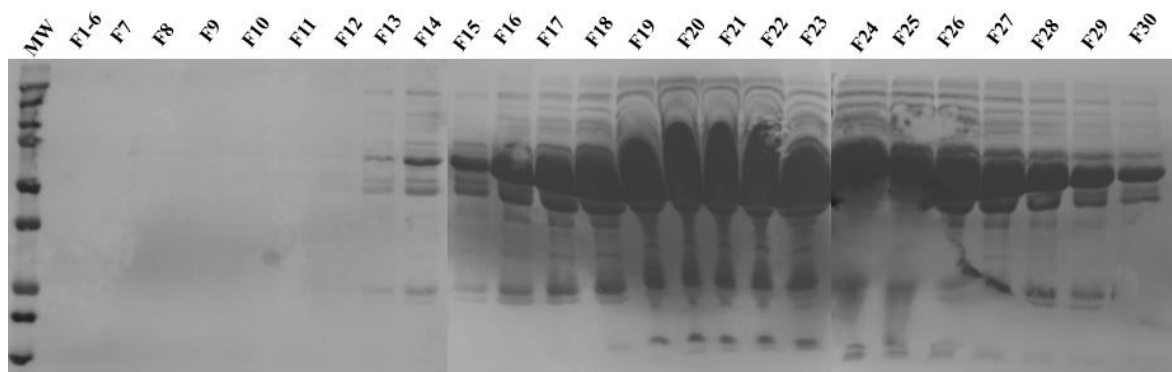


Figure S4 Representative ponceau staining of the 30 SEC eluted fractions.

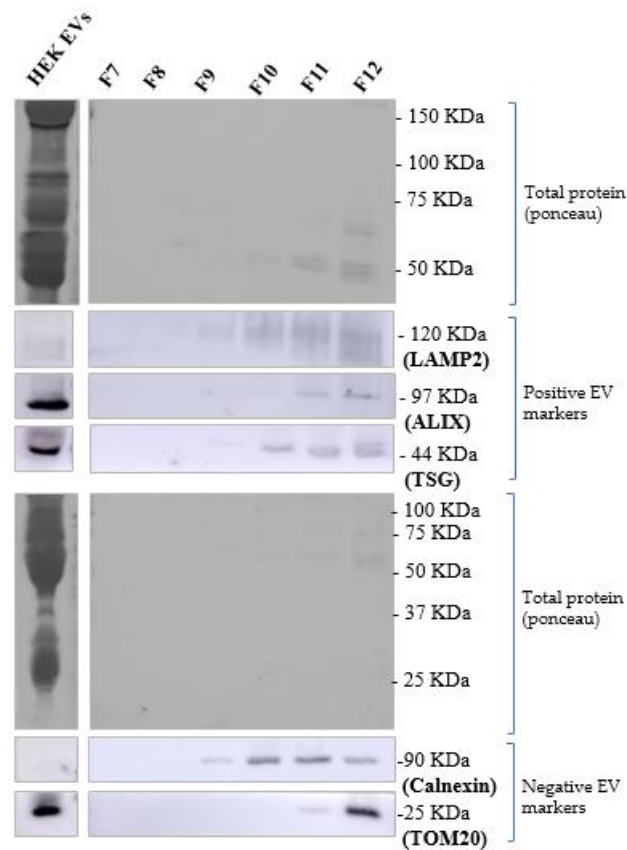


Figure S5 Representative image of western blot membrane of SEC fractions 7 to 12 showing positive and negative EV markers and the respective ponceau staining. A control lane was added to depict the positive and negative markers as well as the total protein pattern of EVs isolated from HEK cells.

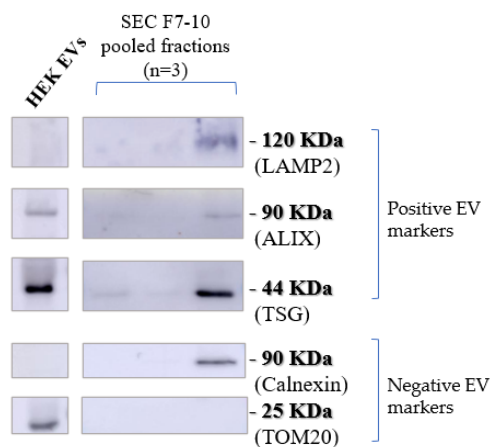


Figure S6 Representative image of western blot membrane of EV-enriched SEC fractions showing positive and negative EV markers. A control lane was added to depict the positive and negative markers of EVs isolated from HEK cells.