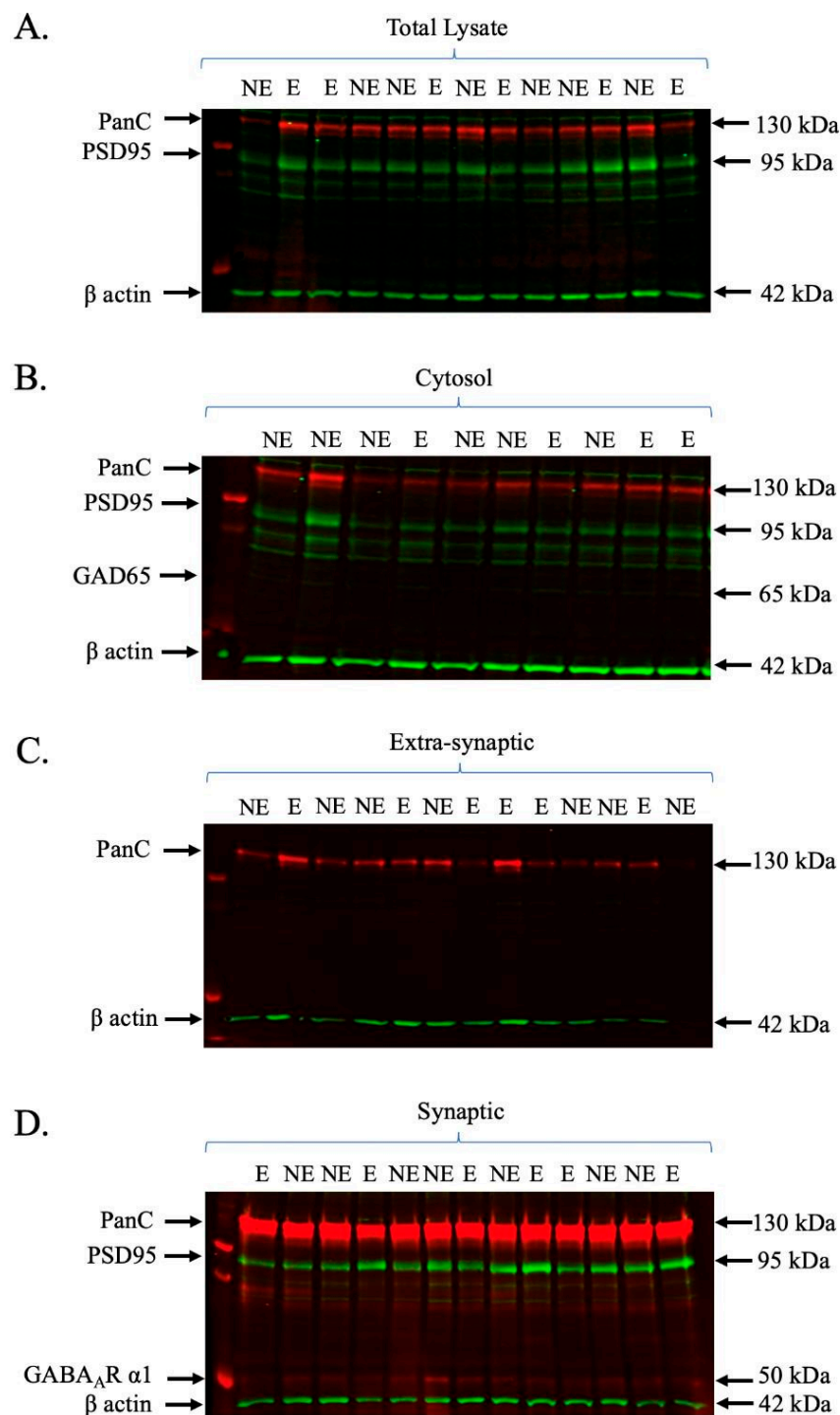
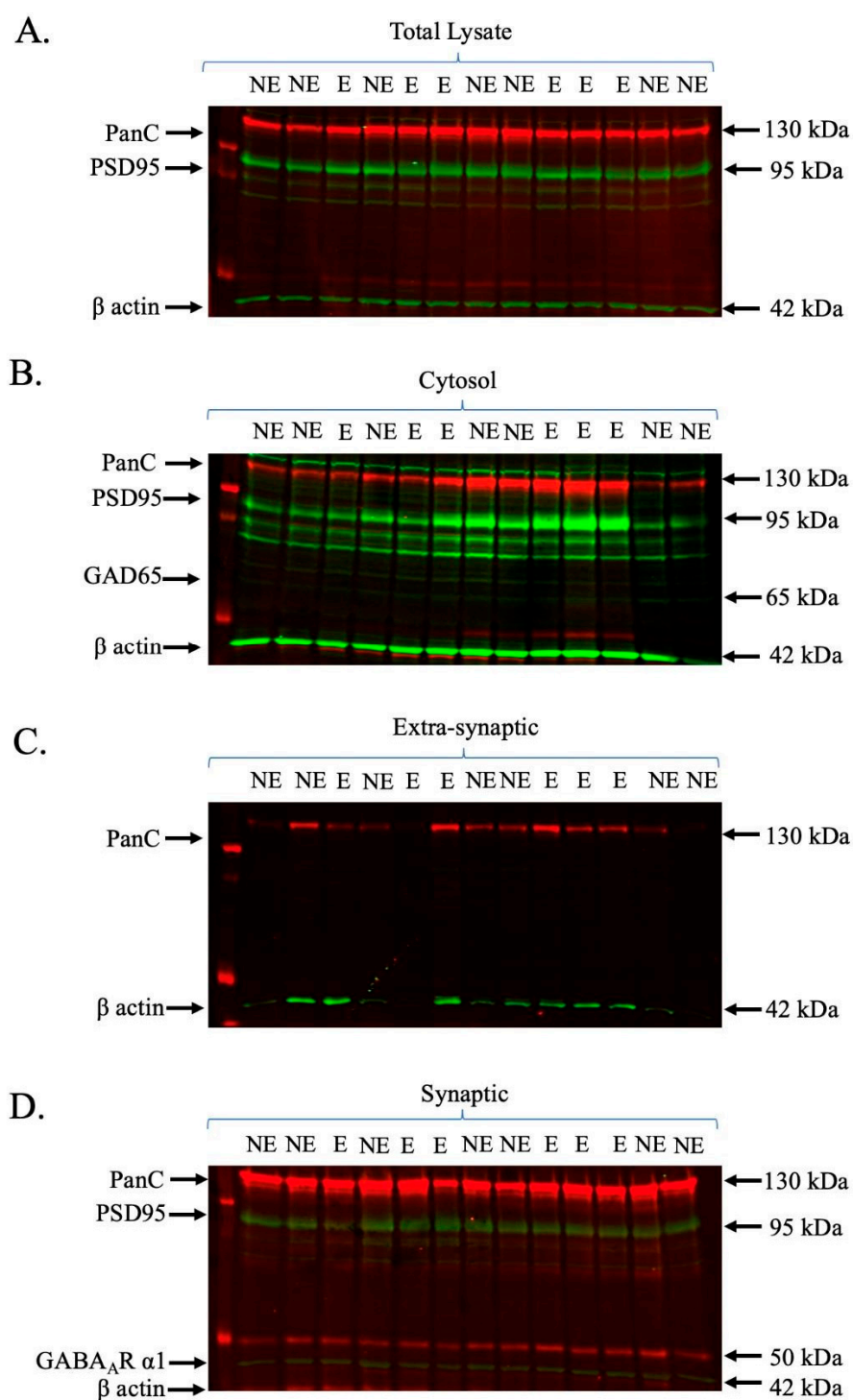


# Postnatal Day 7-9



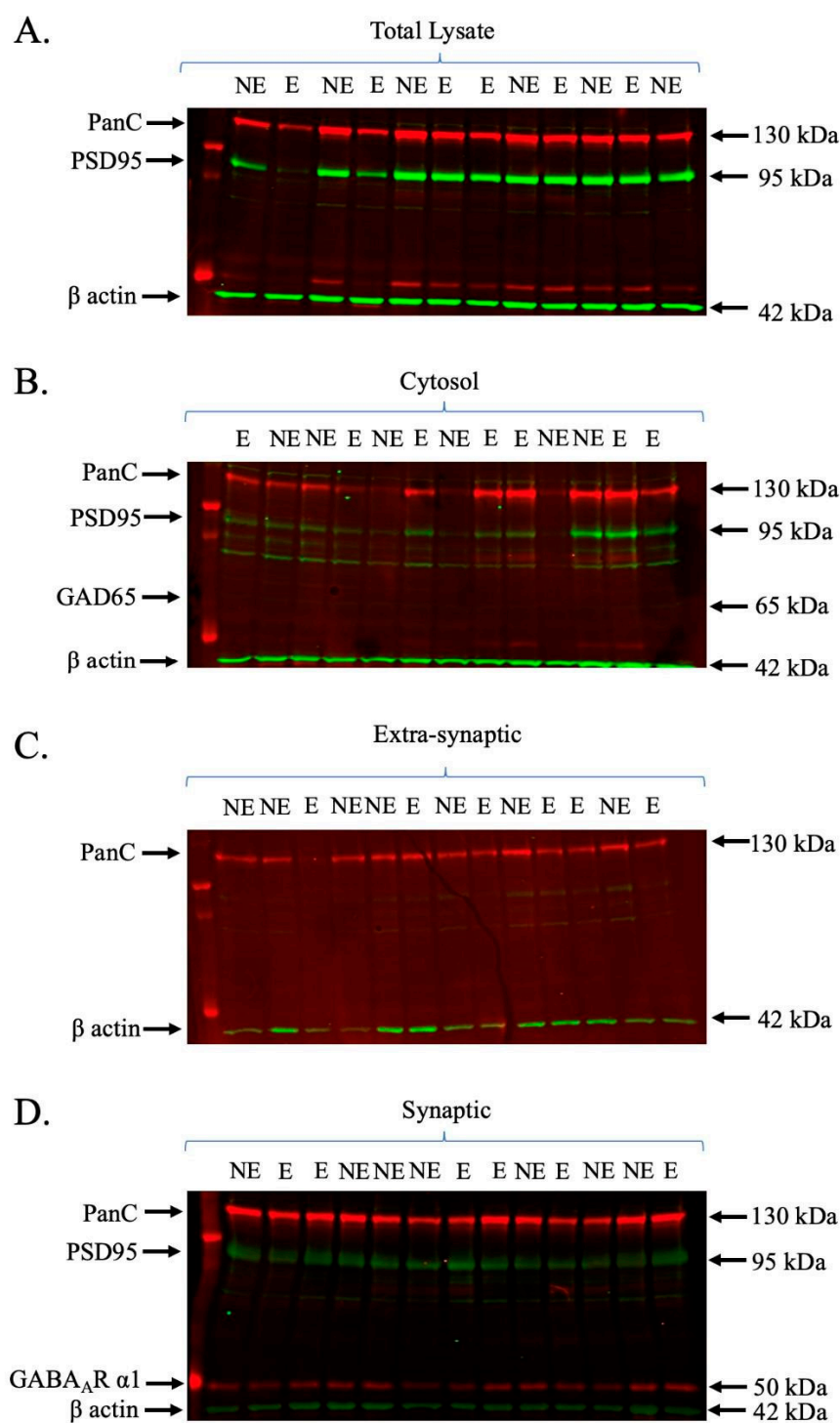
**Figure S1.** Representative western blots for subcellular fractions (total lysate, cytosol, extra-synaptic and synaptic) from primary somatosensory cortex of epileptic stargazers and non-epileptic control littermates at postnatal days 7-9. (NE: Non-epileptic controls; E: epileptic stargazers).

## Postnatal Day 13-15



**Figure S2.** Representative western blots for subcellular fractions (total lysate, cytosol, extra-synaptic and synaptic) from primary somatosensory cortex of epileptic stargazers and non-epileptic control littermates at postnatal days 13-15. (NE: Non-epileptic controls; E: epileptic stargazers).

## Postnatal Day 17-18



**Figure S3.** Representative western blots for subcellular fractions (total lysate, cytosol, extra-synaptic and synaptic) from primary somatosensory cortex of epileptic stargazers (E) and non-epileptic control littermates (NE) at postnatal days 17-18. (NE: Non-epileptic controls; E: epileptic stargazers).