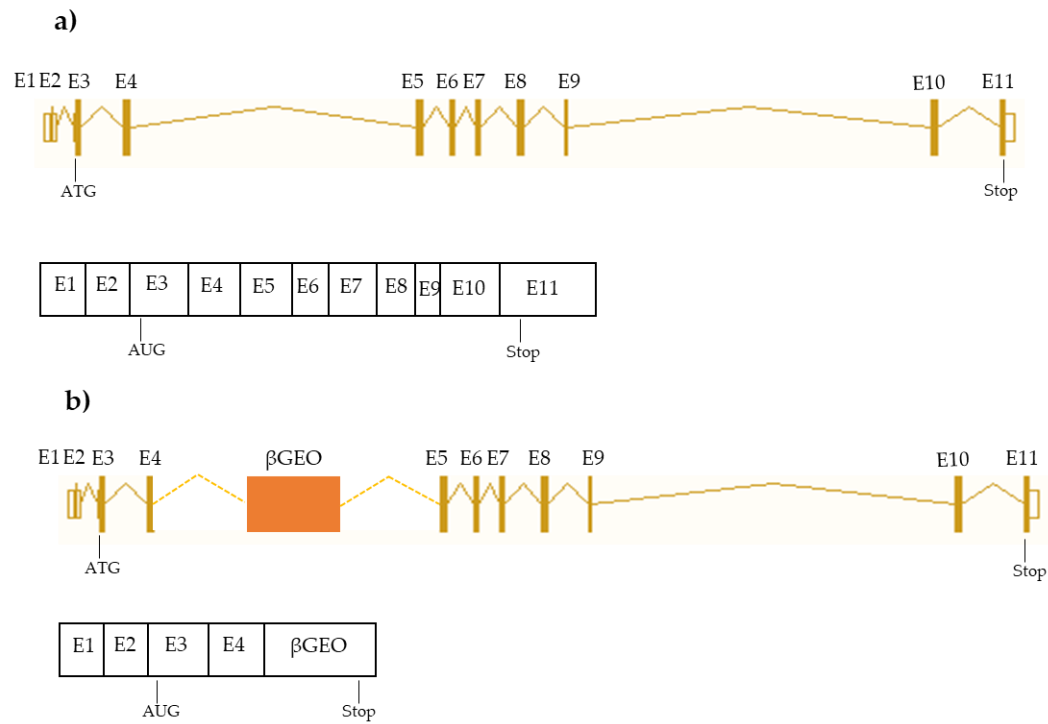
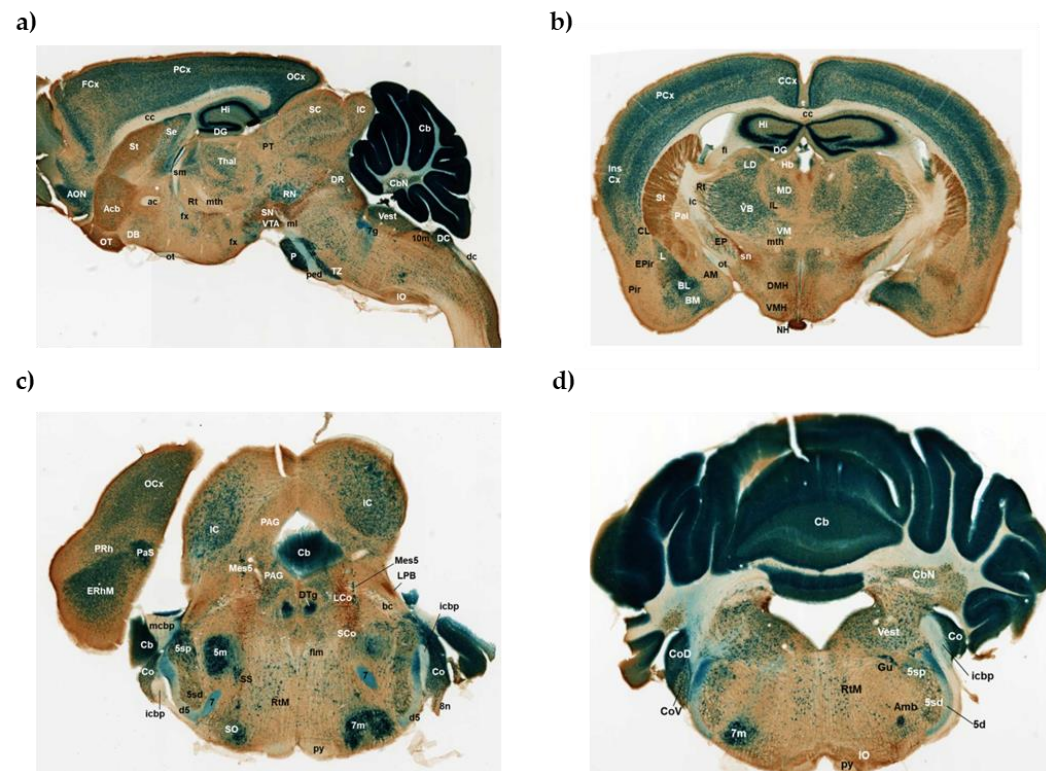


## Supplementary material

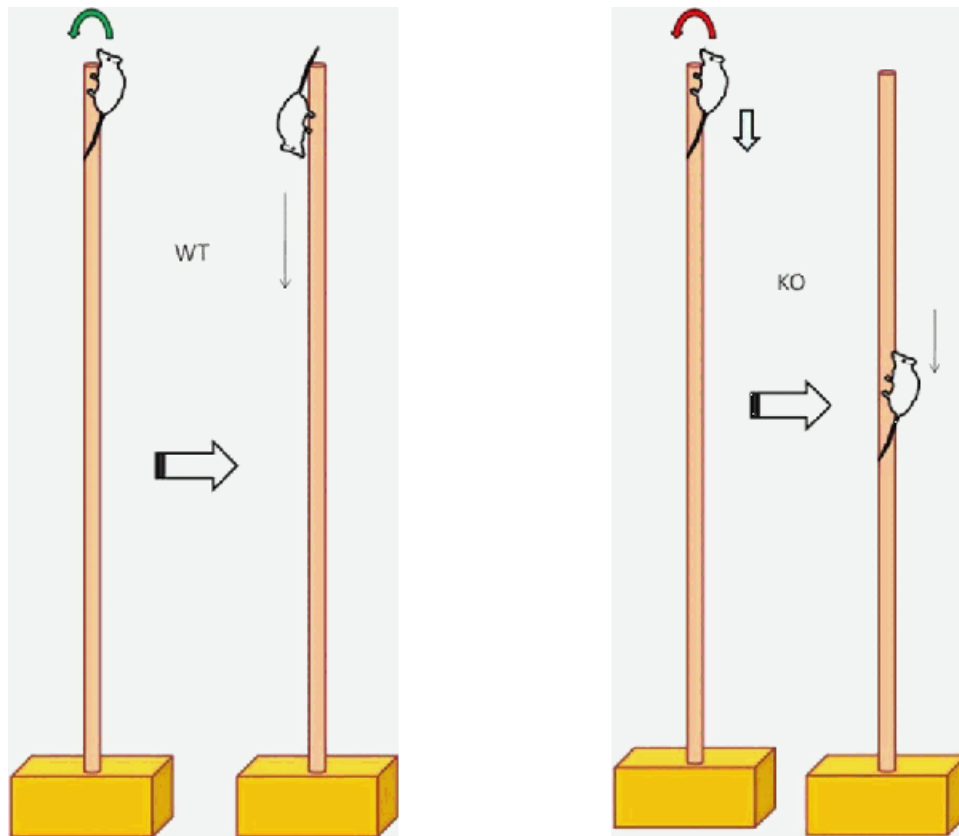


**Figure S1.** (a) Genomic structure of *mAzin2* gene (WT). (b) Genomic structure of *mAzin2* <sup>$\delta$ Geo</sup>.



**Figure S2.** Histological sections of KO brains stained with X-gal (blue) and counter-stained with tyrosine hydroxylase (brown) in (a) Sagittal, and (b–d) coronal sections of KO brains. 10 m, vagus nerve; 5 m, motor trigeminal nerve (r5); 7g, genu of the facial nerve; 7 m, facial motor nucleus; ac, anterior column; Acb, Accumbens; AM, amygdala; AON, anterior olfactory nucleus (retrobulbar region); BL, basolateral nucleus; BM, basomedial amygdaloid nucleus; Cb,

cerebellum; CbM, medial cerebellar nucleus; cc, corpus callosum; CCx, cerebral cortex; CL, claustrum; Co, commissural nucleus; CoD, dorsal cochlear nucleus; CoV, ventral cochlear nucleus; Cx, cortex; DB diagonal band; DC, dorsal claustrum; dc, dorsal column; DG, dentate gyrus; DMH, dorsomedial hypothalamic nucleus; DR, dorsal raphe nucleus; DTg, dorsal tegmental nucleus; EP, entopeduncular nucleus; FCx, frontal cortex; fl, frontal lobe; flm, medial longitudinal tract; fx, fornix; Gu, gustatory nucleus; Hb, habenula; Hi, hippocampus; hy, hypothalamus; IC, internal capsule; icbp, inferior cerebellar peduncle; IL/L, intermediolateral/lateral solitary subnucleus; Ins, insula; IO, inferior olive; Lco, locus coeruleus; LD, laterodorsal thalamic nucleus; mcbp, medial cerebellar peduncle; MD, medial dorsal thalamic nucleus; Mes5, trigeminal mesencephalic nucleus; ml, medial lemniscus; mth, mammillo-thalamic tract; P, basilar pontine nuclei; PAG, periaqueductal gray; Pal, paralamina nucleus; PaS, parasubiculum; ped, cerebral peduncle; Pir, parainsular region; PRh; PT, paratenial thalamic nucleus; py, pyramidal tract; RN, red nucleus; Rt, reticular thalamic nucleus; RtM, medial (basal) reticular formation; SC, superior colliculus; sm, stria medullaris of thalamus; SN, substantia nigra; SO, superior olivary formation; SS, straight sinus; St, stria terminalis; Thal, thalamus; TZ, trapezoid body decussation; Vest, vestibular nucleus; VM, ventromedial thalamic nucleus; VMH, ventromedial hypothalamic nucleus; VTA, ventral tegmental area.



**Figure S3.** Pole test scheme and representation of the results obtained in the WT and KO groups.