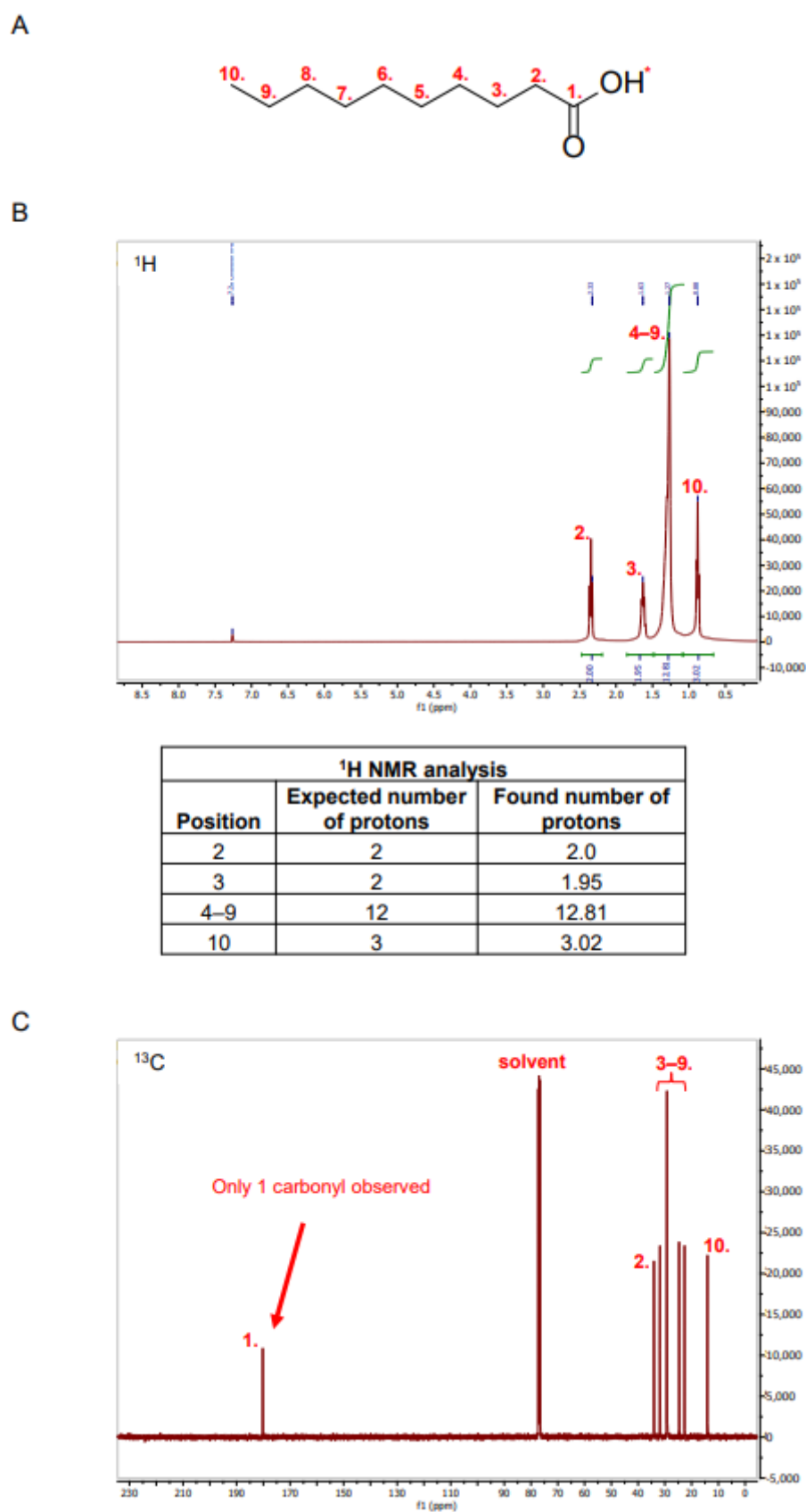
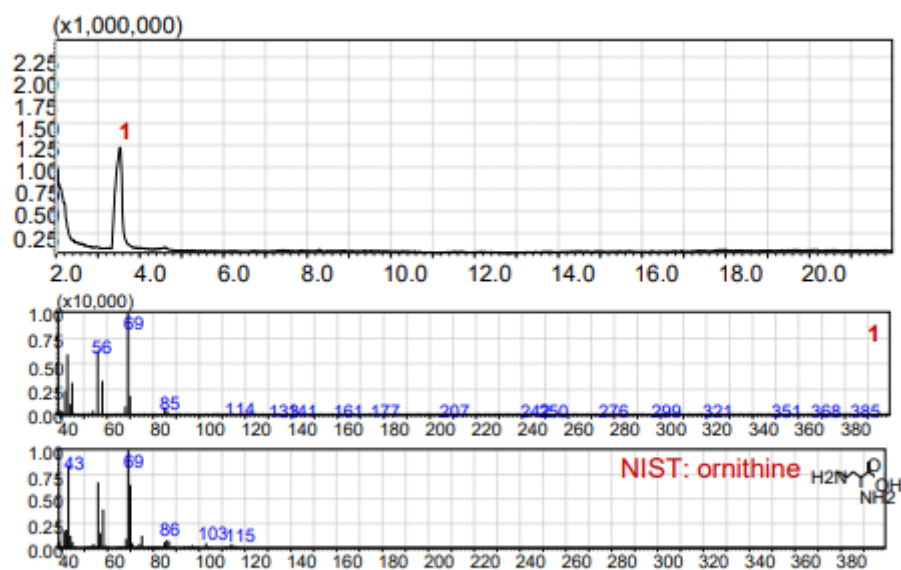


**Supplementary Figure S1.** NMR analysis of aqueous fraction of GS-2. (A) Schematic representation of L-arginine with carbons labeled 1–6. \*These protons underrepresented in NMR plots due to fast chemical exchange. (B) <sup>1</sup>H and (C) <sup>13</sup>C NMR analysis of the aqueous fraction of GS-2.

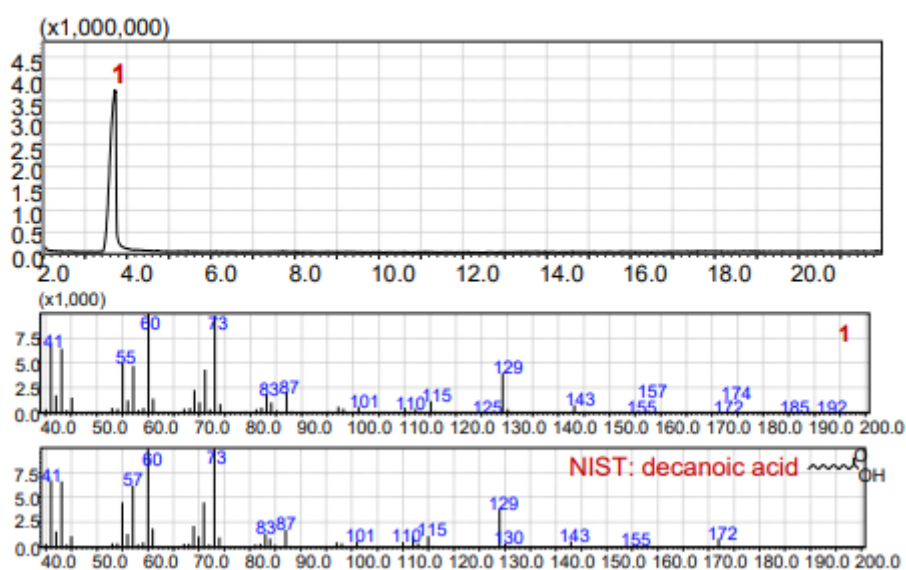


**Supplementary Figure S2.** NMR analysis of heptane fraction of GS-2. (A) Schematic representation of capric acid with carbons labeled 1–10. \*These protons are underrepresented in NMR plots due to fast chemical exchange. (B)  $^1\text{H}$  and (C)  $^{13}\text{C}$  NMR analysis of the heptane fraction of GS-2.

A



B



**Supplementary Figure S3.** GCMS analysis of GS-2. (A) aqueous fraction and (B) heptane fraction of GS-2.