

Supplemental material

The LVR determination provides a dynamic mechanical report of the change in the microstructure under a critical strain.

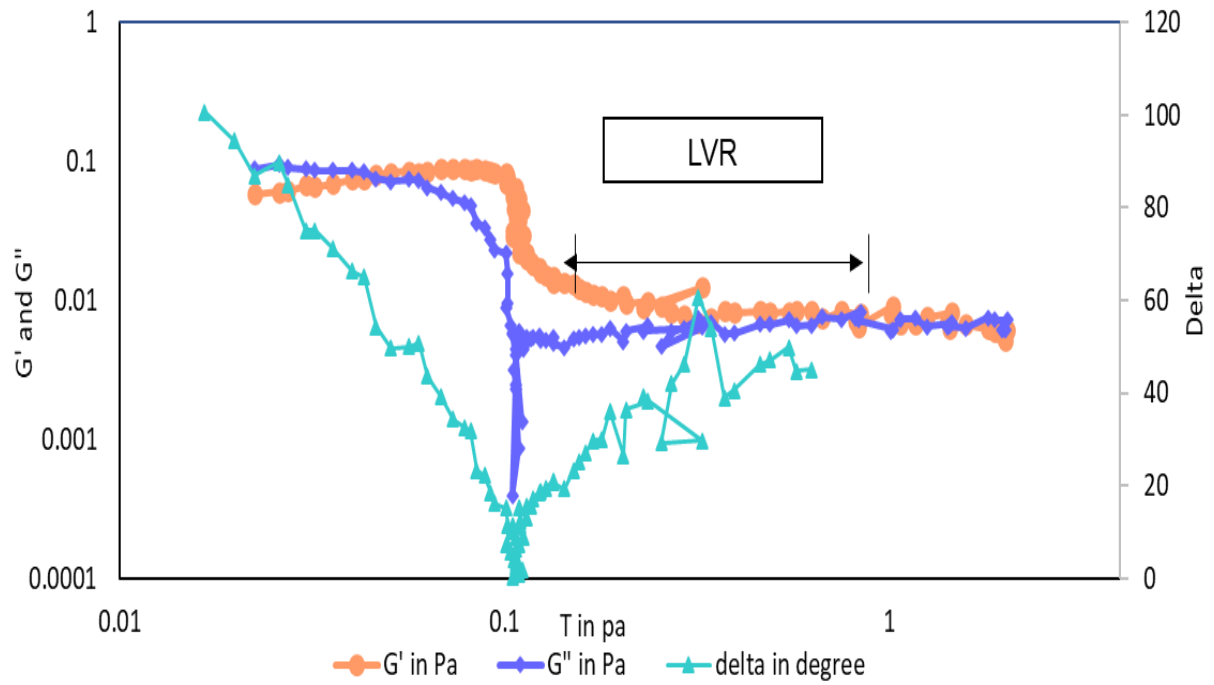


Figure S1. Linear Viscoelastic Region of the milk samples.

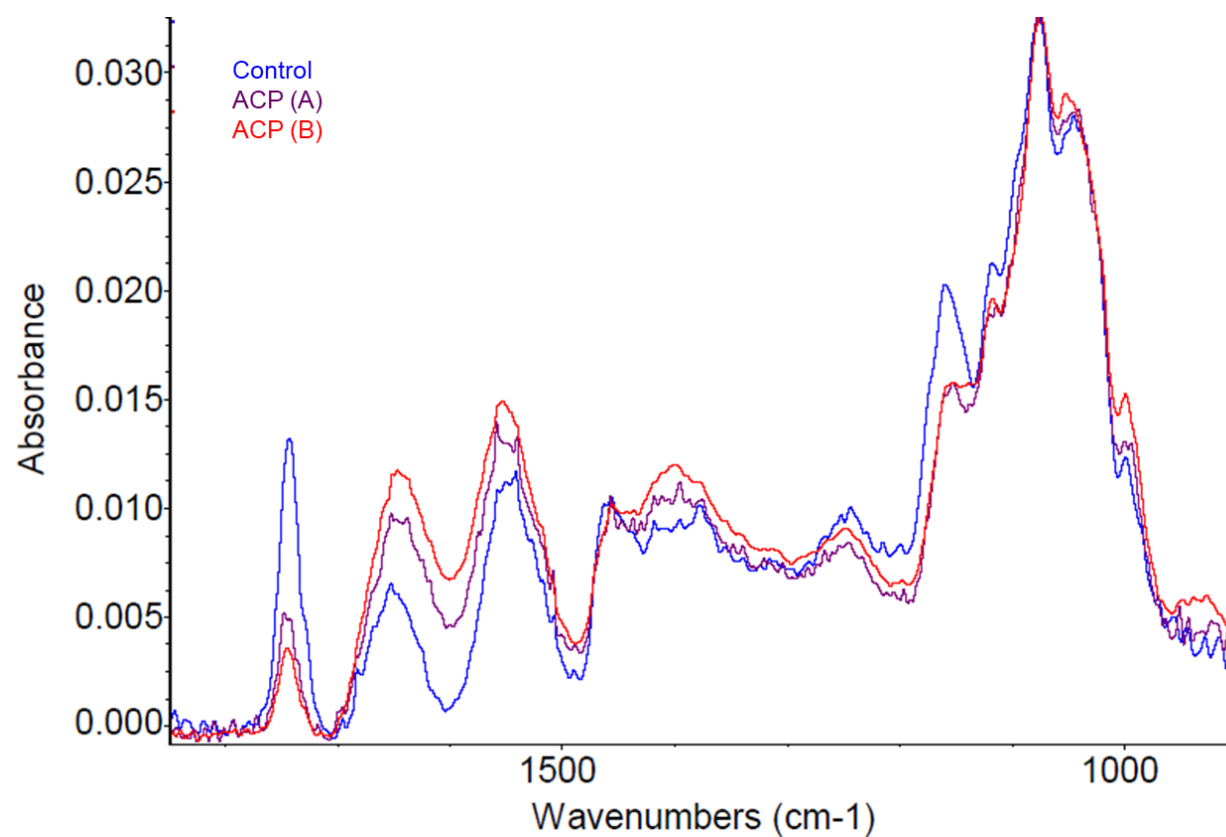


Figure S2: Expanded fingerprint region from FTIR spectrum of the milk samples. ACP (A) and ACP (B) denotes the sample treated with 50 kV for 2 minutes with 0- and 24-hours storage time respectively

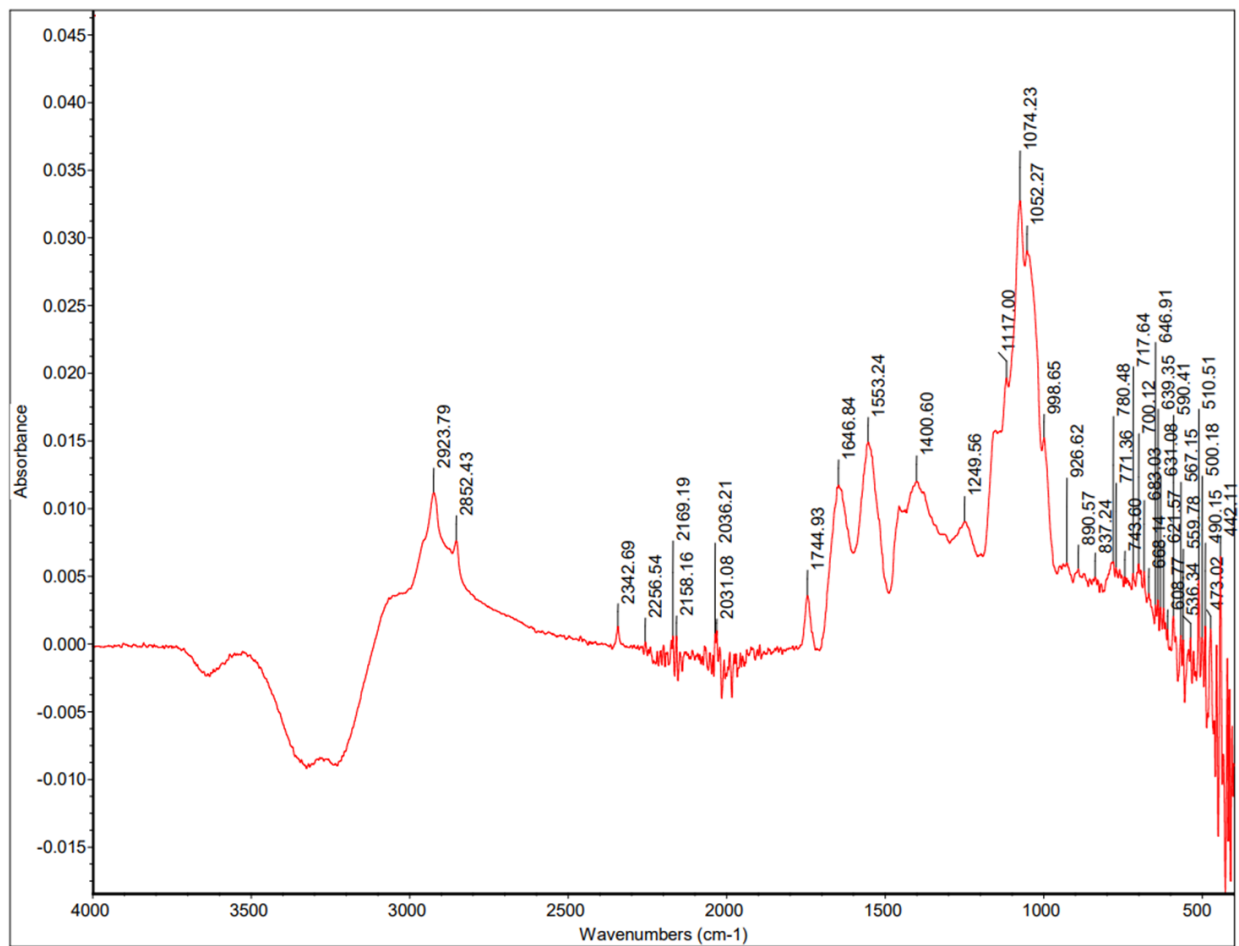


Figure S3: Peaks from the FTIR spectrum of the milk samples when the sample was plasma treated with 50 kV for 2 minutes with 24-hours storage time.