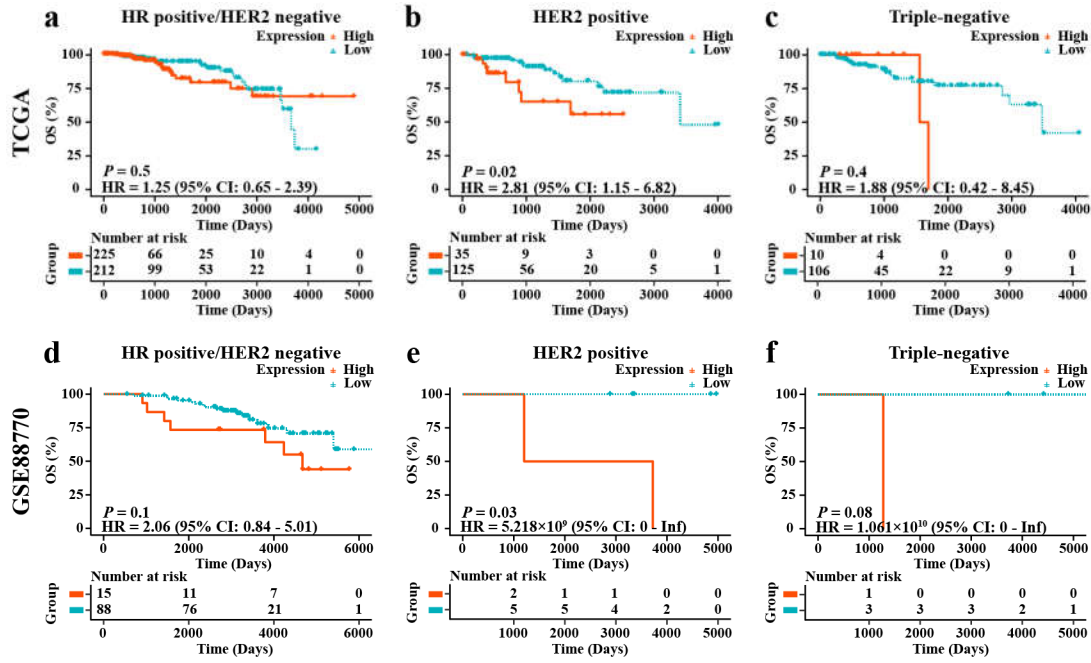
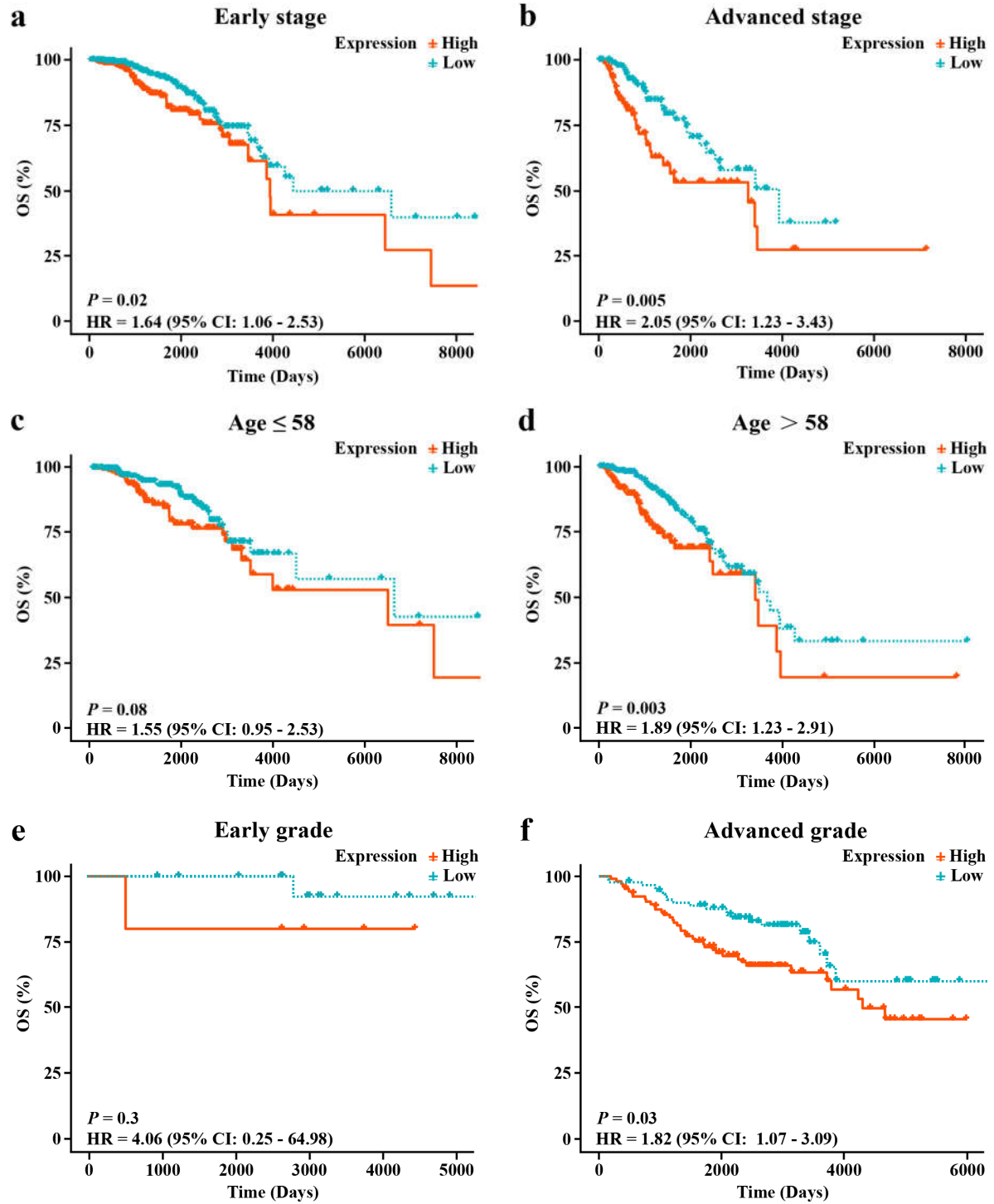


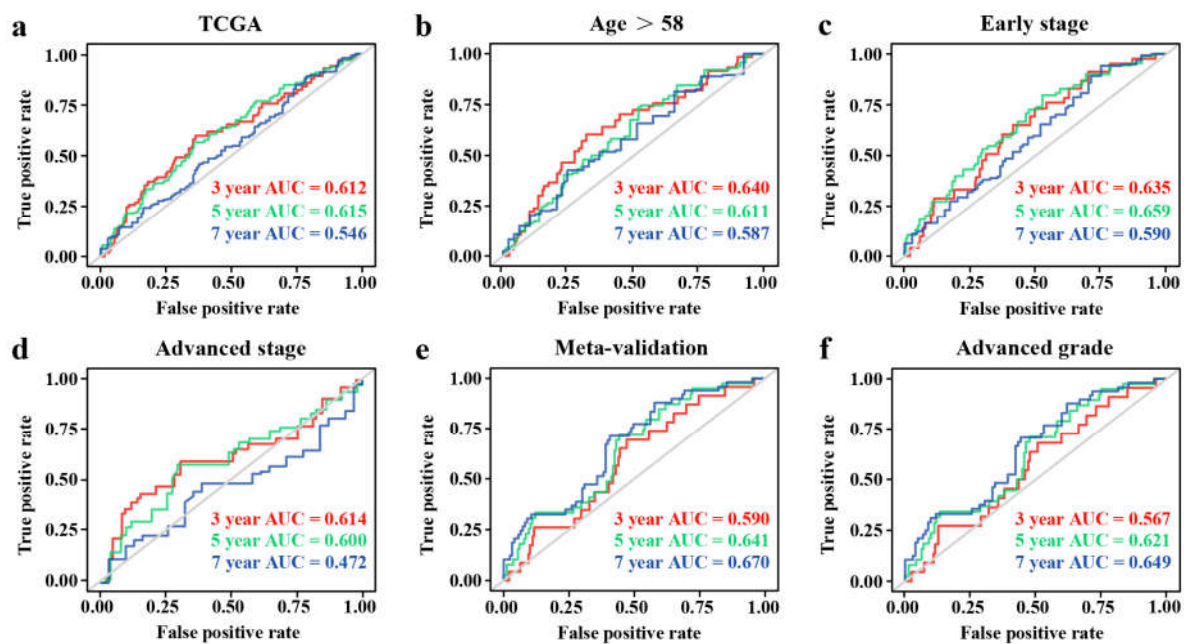
**Figure S1.** EIF4G1 protein level in human cancers and normal tissues. (a) Protein levels of EIF4G1 in normal organs; (b) Protein levels of EIF4G1 in tumor tissues; (c) Representative IHC images of EIF4G1 expression level in BRCA tissues and normal samples.



**Figure S2.** The KM survival curves of the three subtypes of BRCA. (a) Hormone receptor (HR) positive/HER2 negative, (b) HER2 positive, (c) triple-negative in the TCGA cohort. (d) HR positive/HER2 negative, (e) HER2 positive, (f) triple-negative in the GSE88770 cohort.



**Figure S3.** KM survival stratification analyses of clinical characteristics pertaining to (a) early stage, (b) advanced stage, (c) age  $\leq 58$ , (d) age  $> 58$ , (e) early grade, and (f) advanced grade.



**Figure S4.** The time-dependent ROC curve for 3-, 5-, and 7-year survival rates. (a) AUC predictive value of EIF4G1 in TCGA; (b) AUC predictive value of EIF4G1 for age >58, (c) early stage, (d) and advanced stage in TCGA; (e) AUC predictive value of EIF4G1 in meta-validation; (f) AUC predictive value of EIF4G1 for advanced grade in GEO.