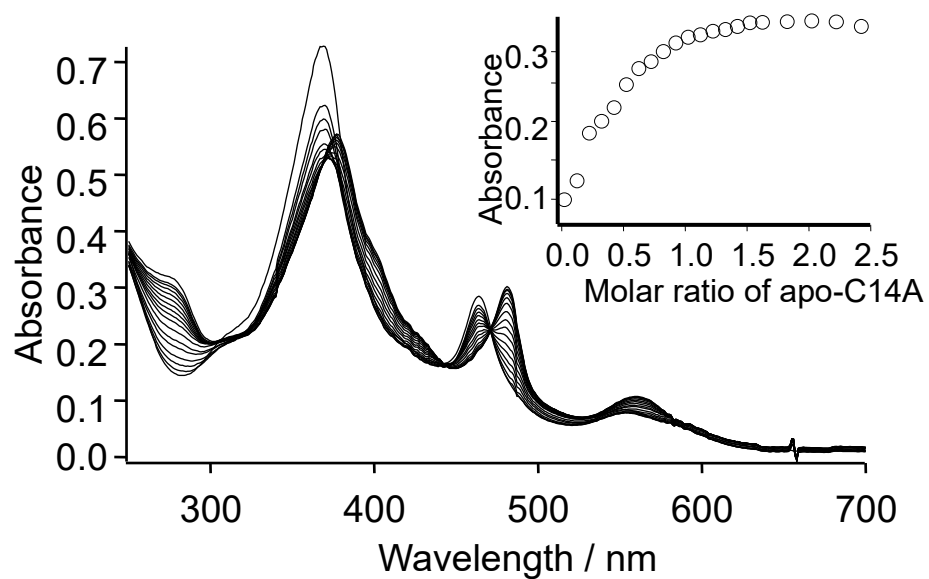


**Figure S1.** Comparison of thermo-stability of reconstituted C14A in monitored by the temperature dependence of the CD spectra at 222 nm in the presence of 2M Guanidine•HCl. (A) Reconstituted C14A with ferric heme *b* before (○) and after (Δ) the covalent linkage formation, (B) reconstituted C14A with Zn-PPIX before (○) and after (Δ) the covalent linkage formation



**Figure S2.** The spectrophotometric titration of apo-C14A to Mn(III)-PPIX. The apo-protein is reconstituted with Mn(III)-PPIX to yield a corresponding Mn-substituted cytochrome. The inset displays a profile of the titration monitored at the emerging solet band (480 nm) of the cytochrome.