

Supplementary Materials

A Pan-Inhibitor for Protein Arginine Methyltransferase Family Enzymes

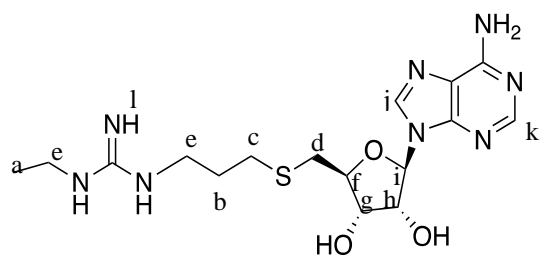
Iredia D. Iyamu¹, Ayad A. Al-Hamashi^{1,2} and Rong Huang^{1,*}

¹ Department of Medicinal Chemistry and Molecular Pharmacology, Center for Cancer Research, Institute for Drug Discovery, Purdue University, West Lafayette, Indiana 47907, United States

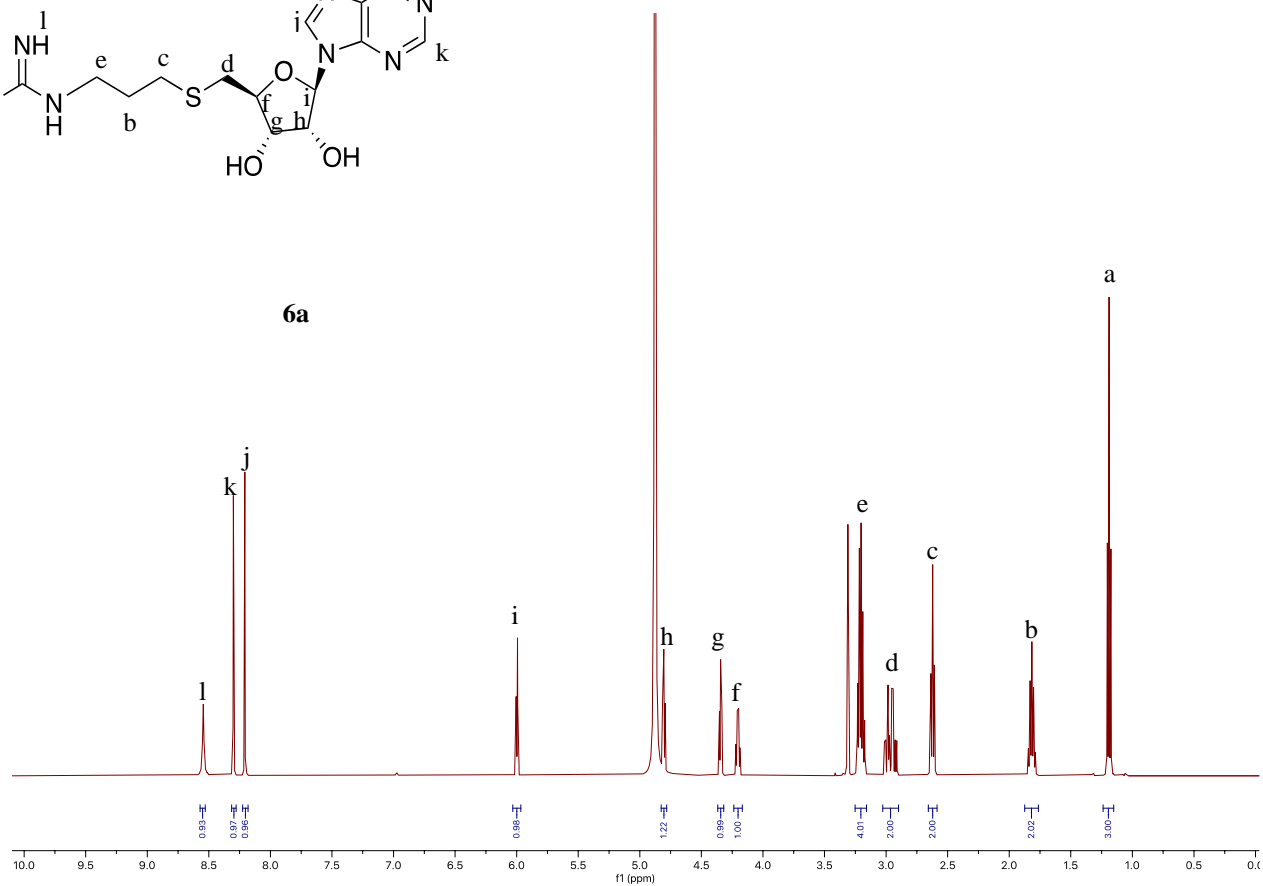
² Department of Pharmaceutical Chemistry, College of Pharmacy, University of Baghdad, Bab-almoadham, Baghdad, 10047, Iraq

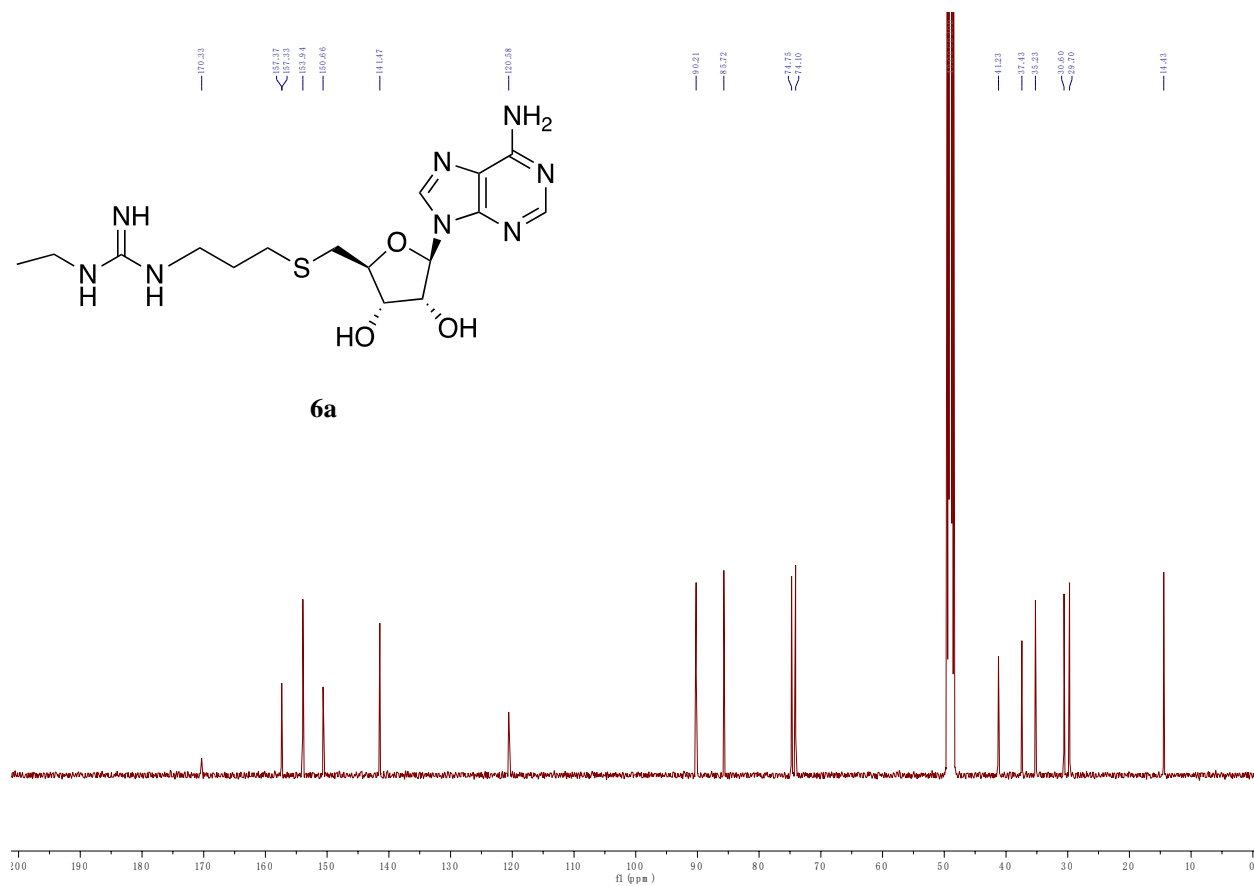
* Correspondence: huang-r@purdue.edu Tel.: +001 765 494 3426

NMR spectra, HRMS and HPLC analysis of compounds 6a-6n

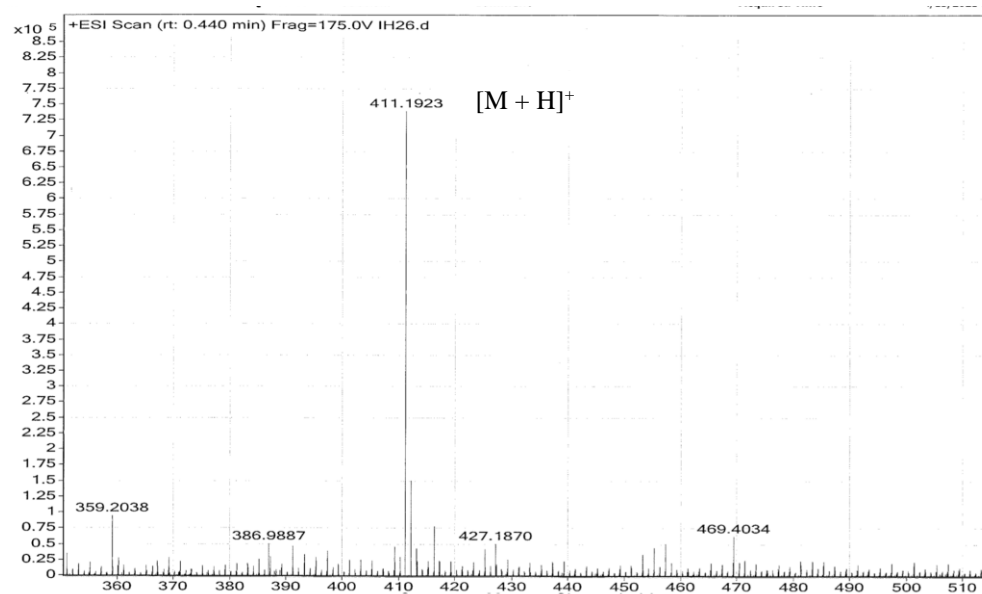


6a

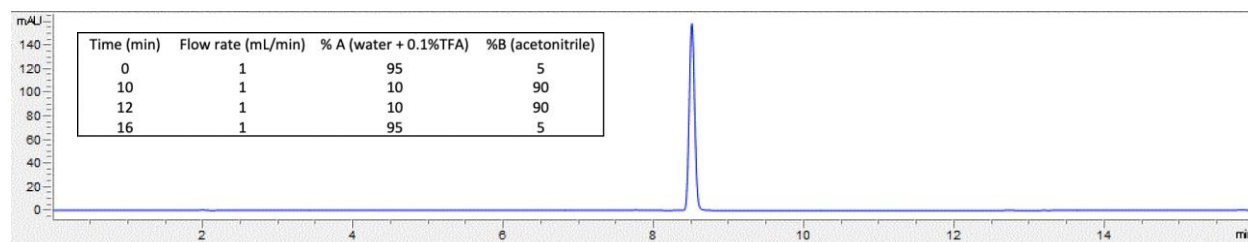


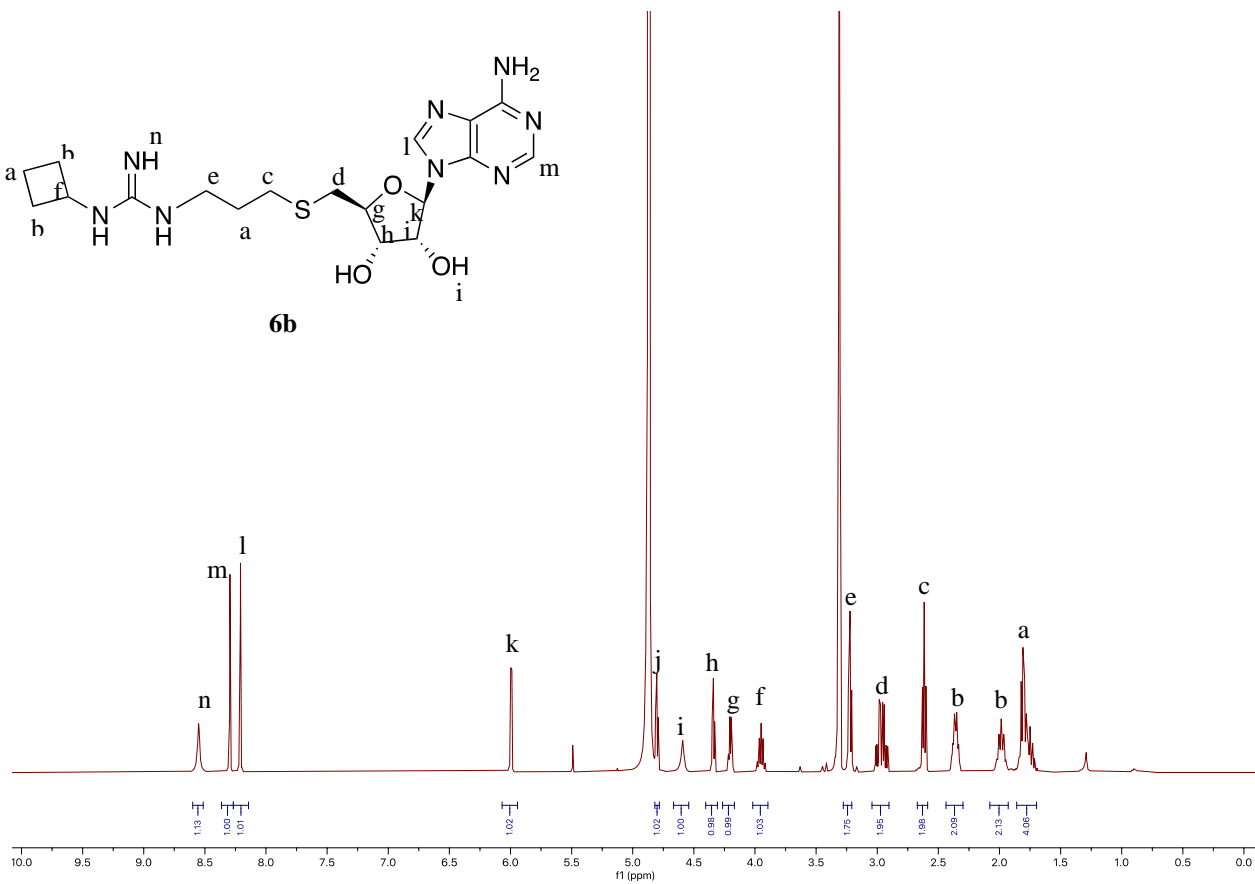
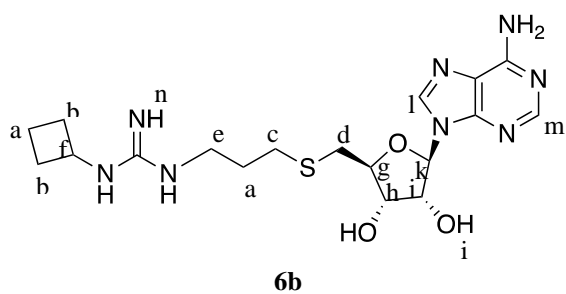


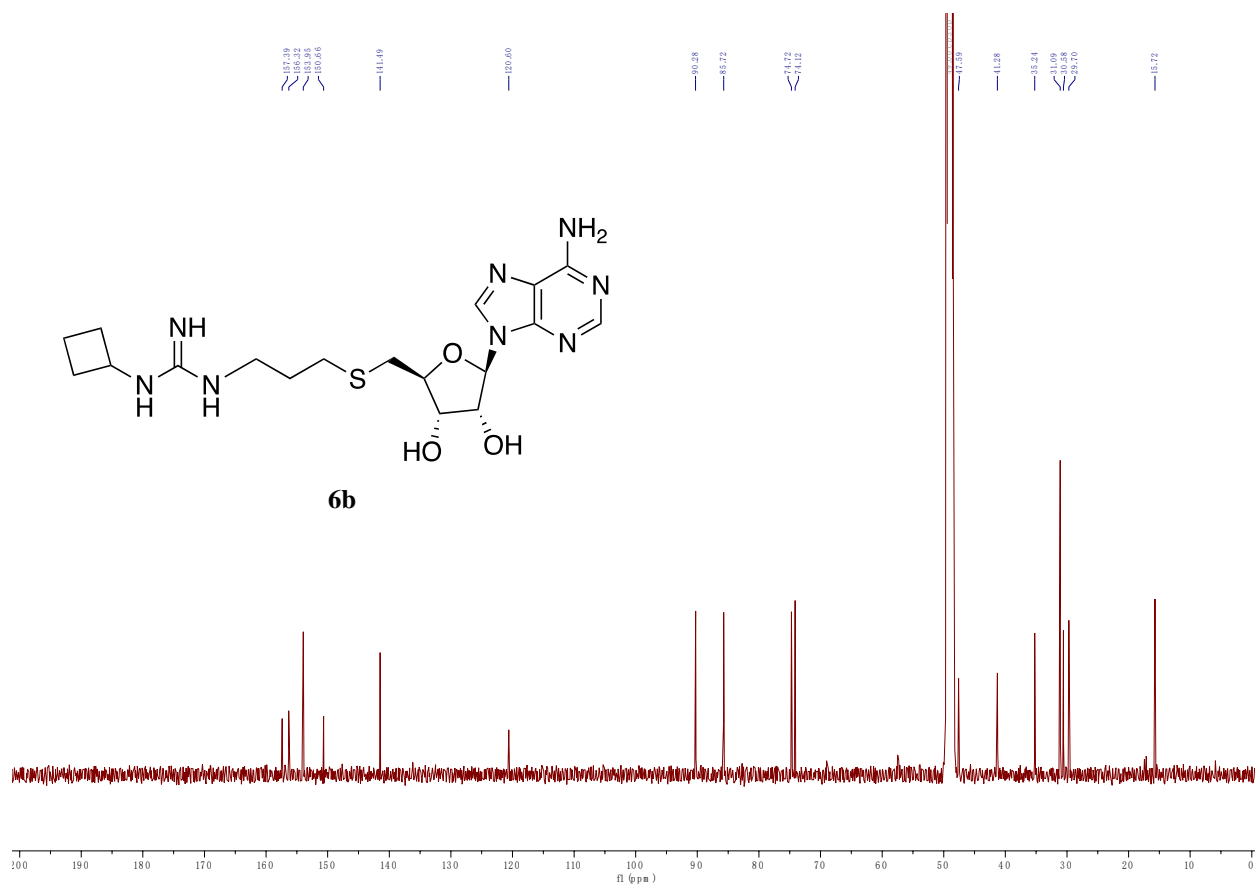
HRMS Spectra of 6a



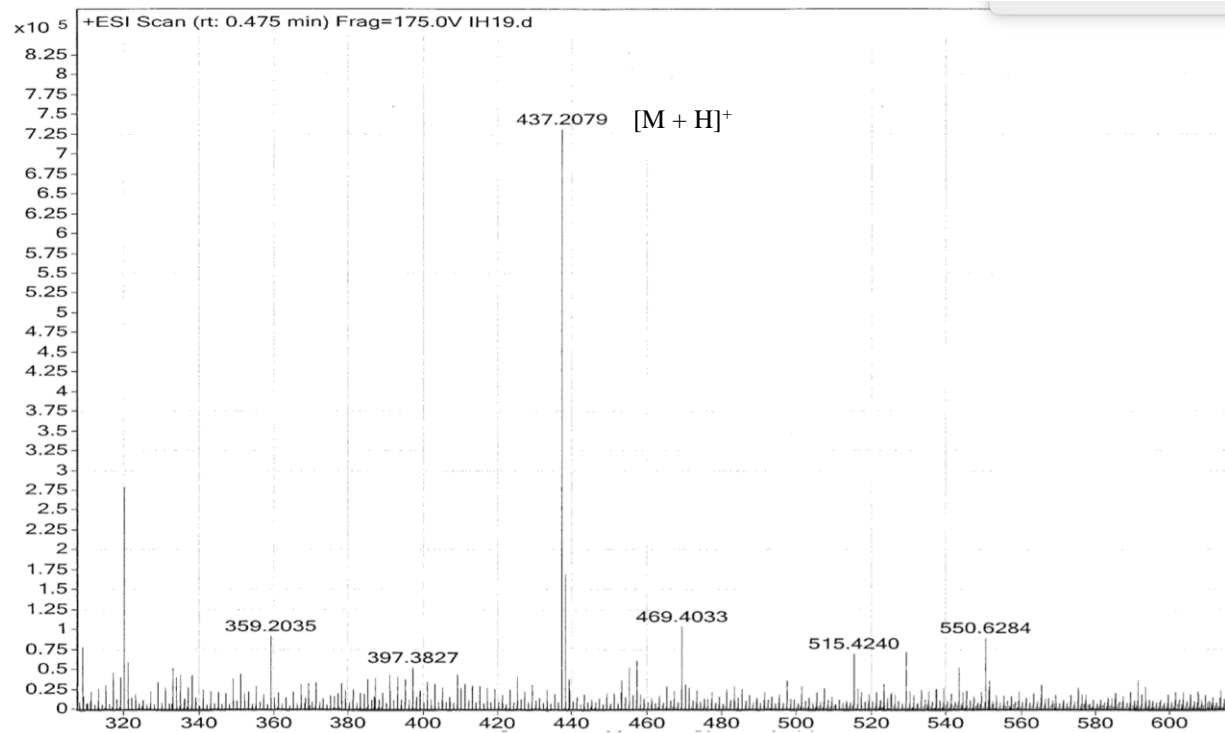
HPLC Spectra of 6a



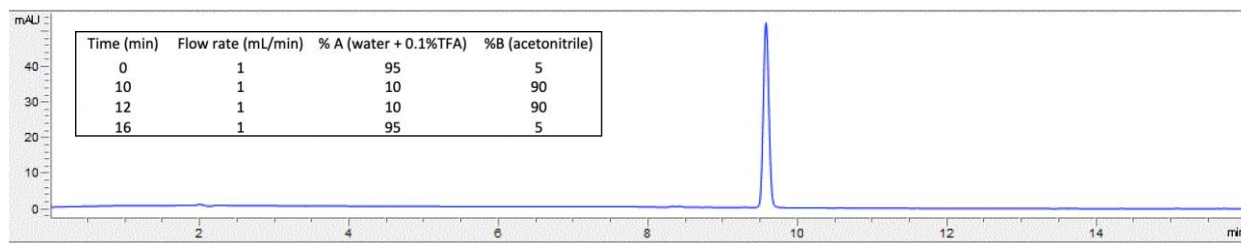


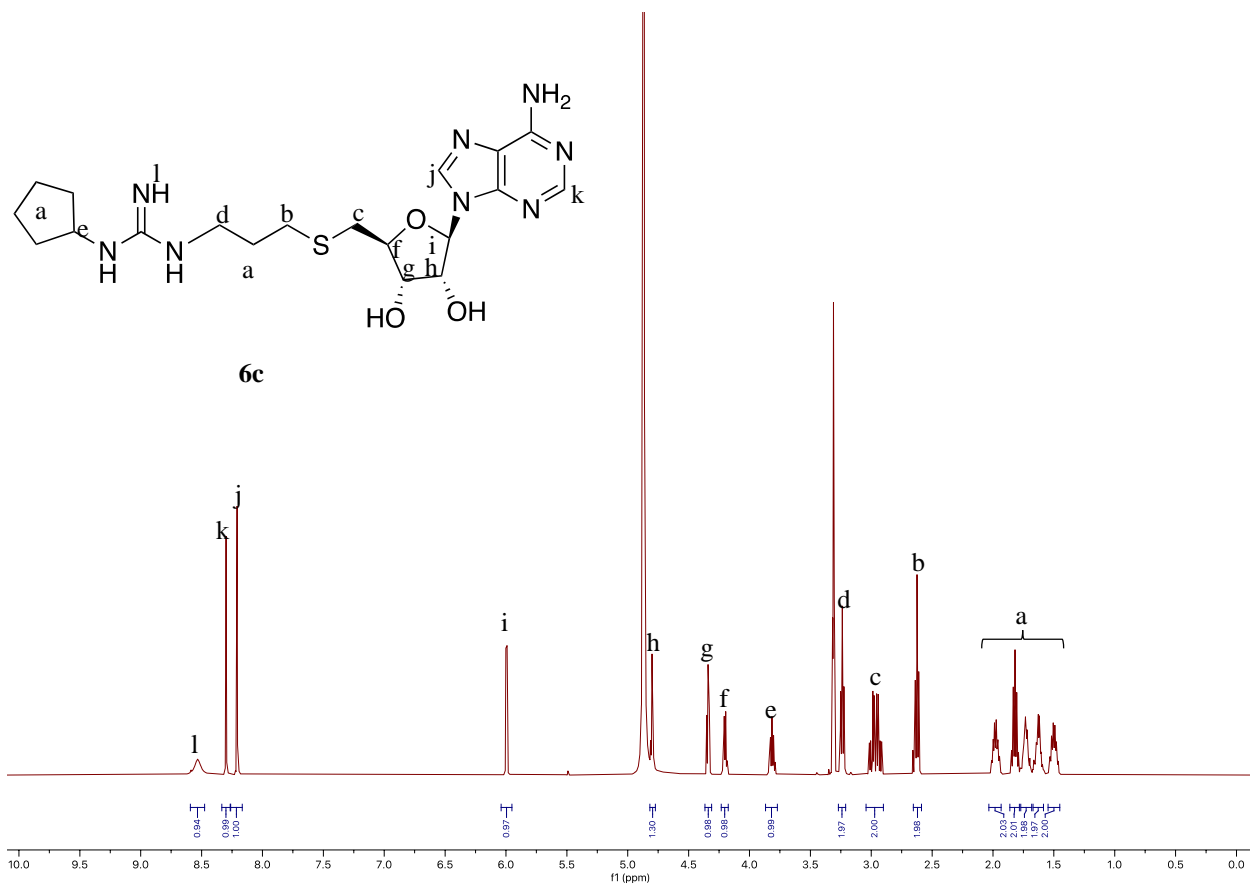


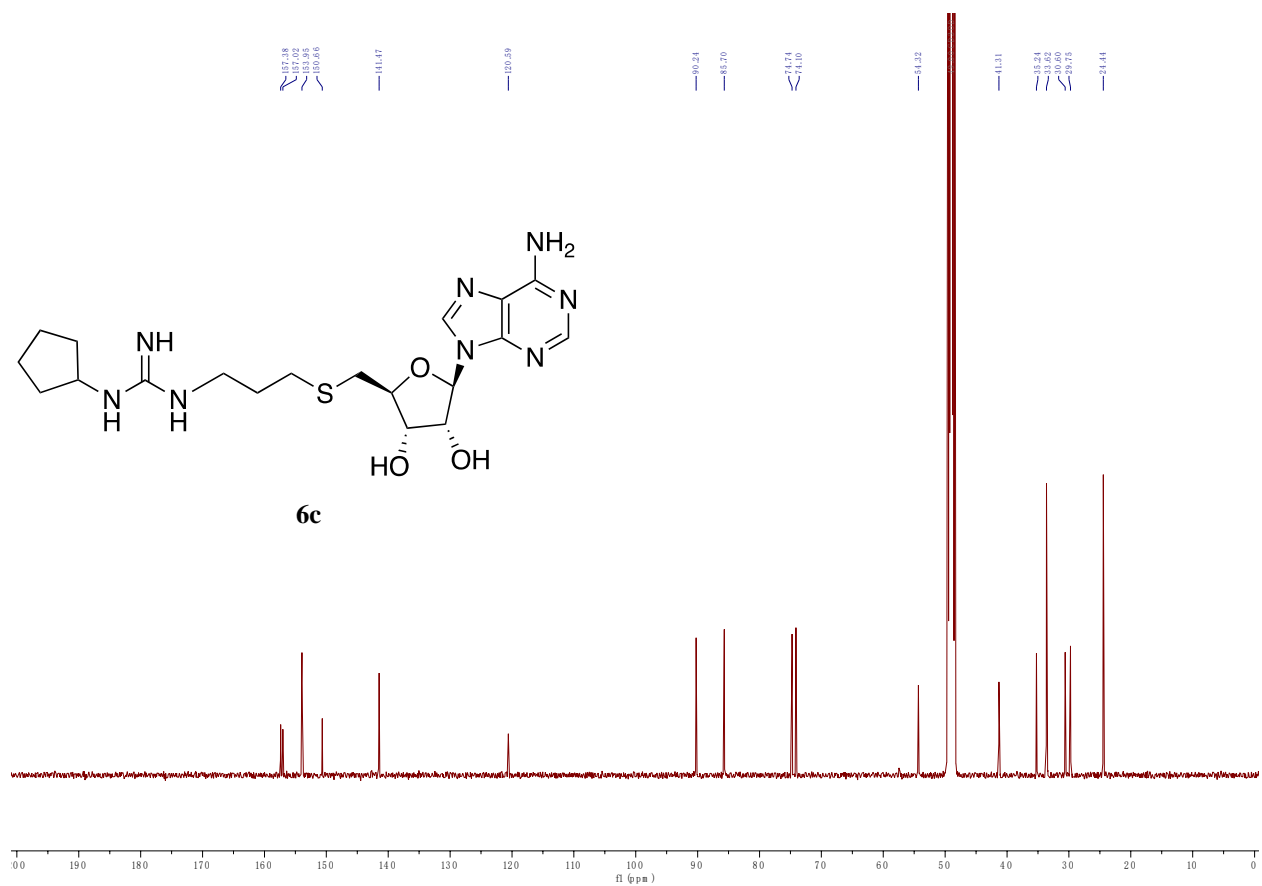
HRMS Spectra of 6b



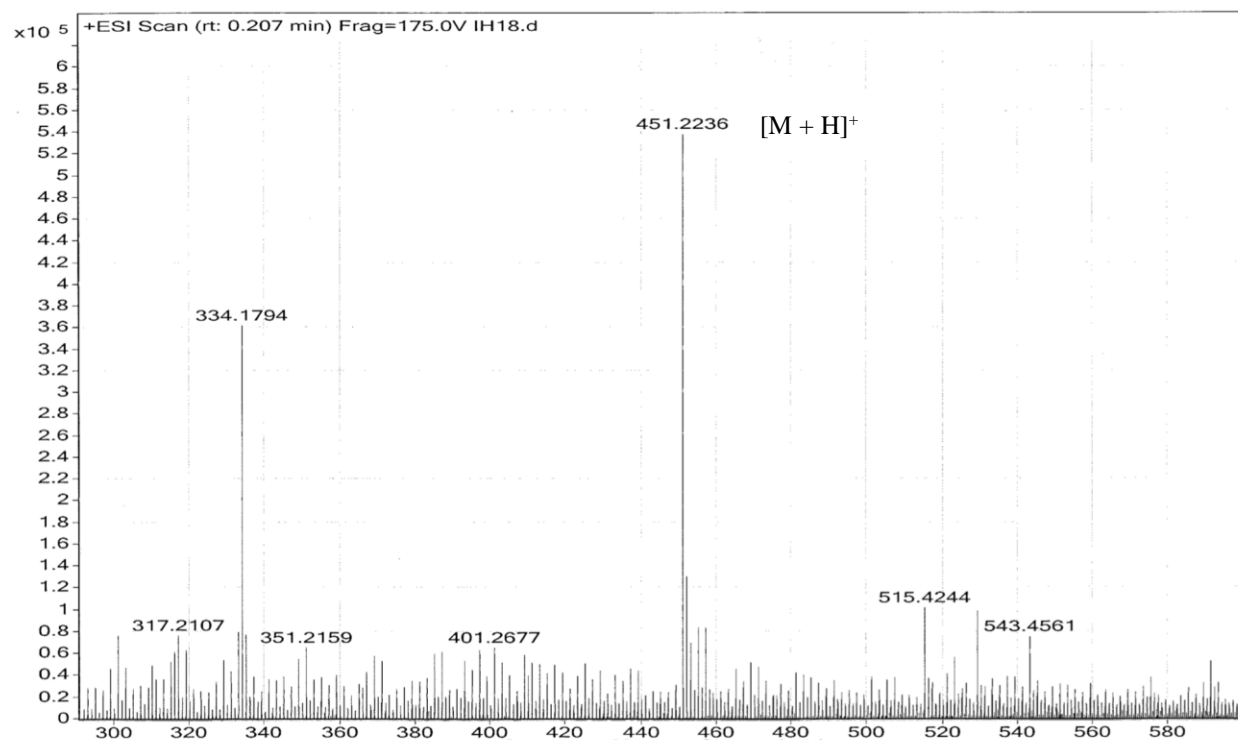
HPLC Spectra of 6b



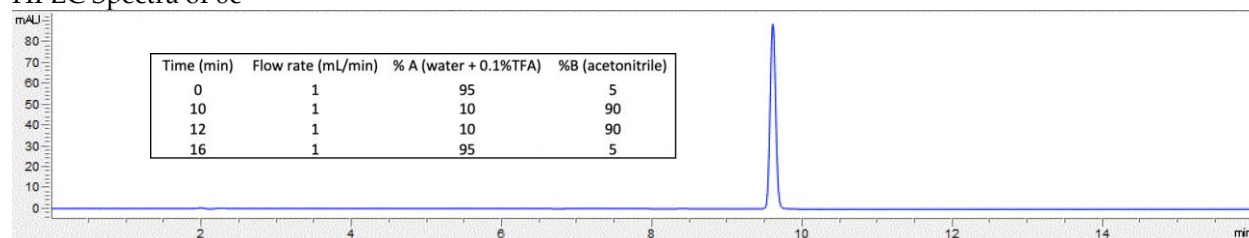


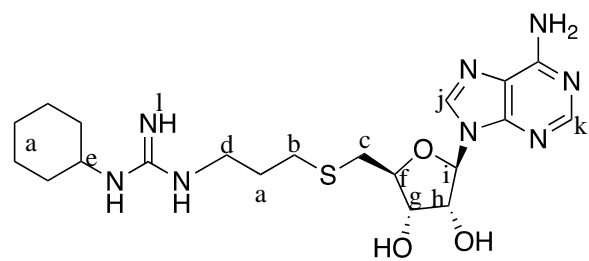


HRMS Spectra of **6c**

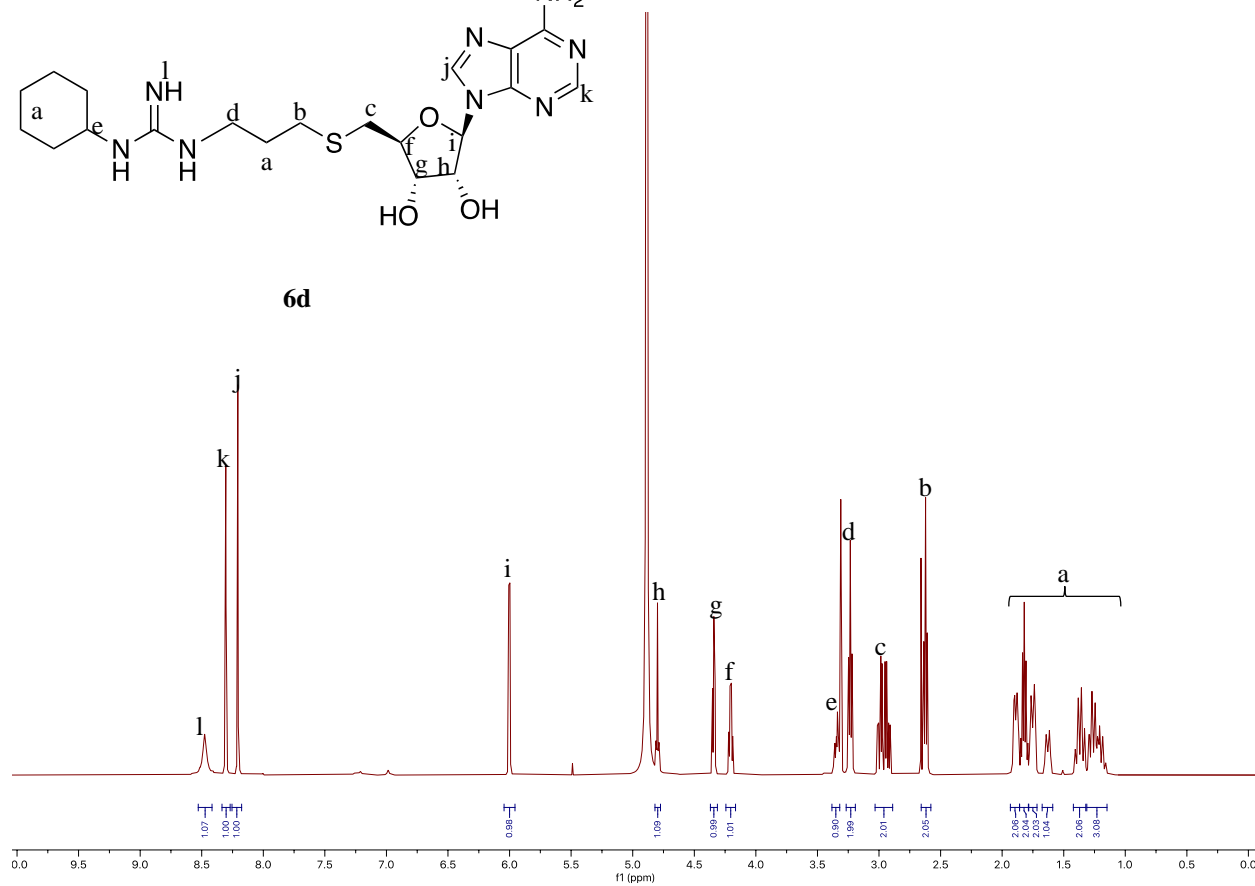


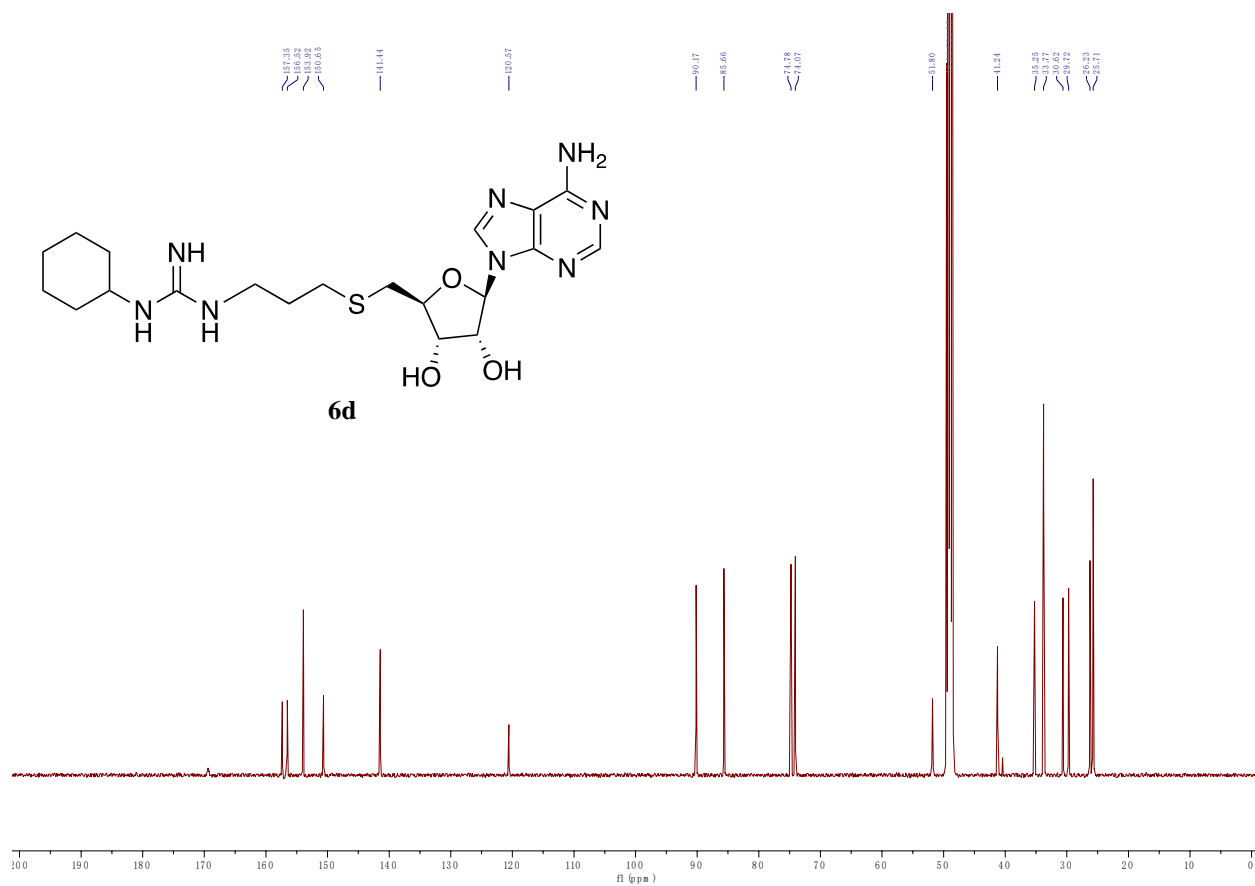
HPLC Spectra of 6c



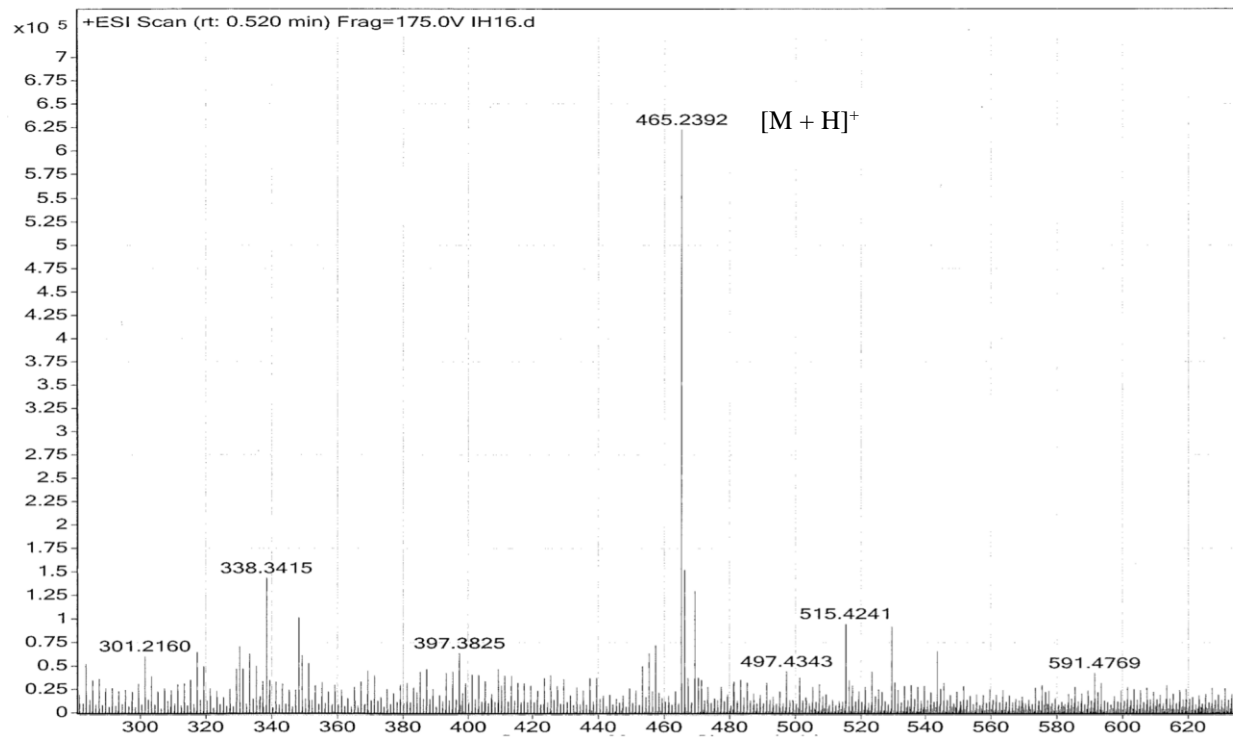


6d

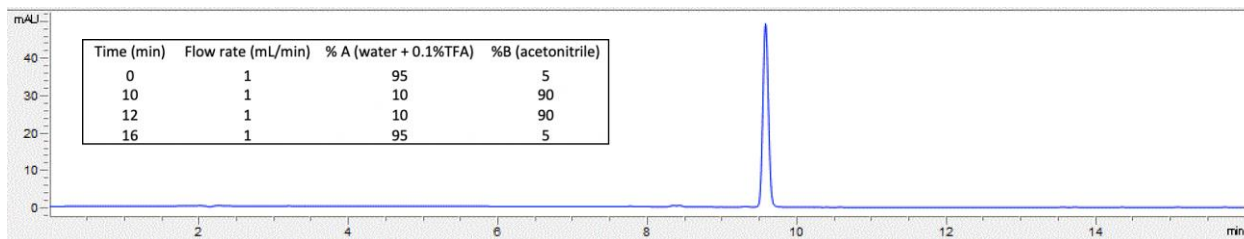


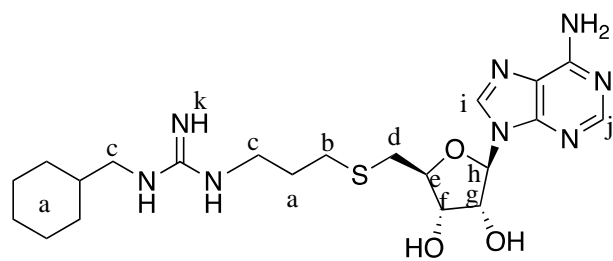


HRMS Spectra of **6d**

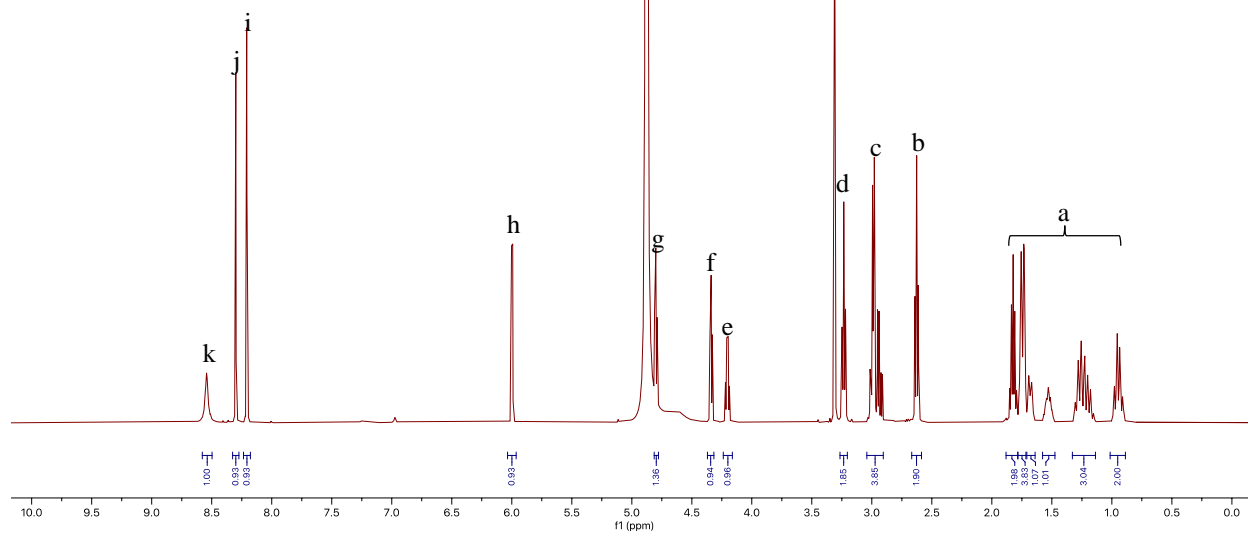


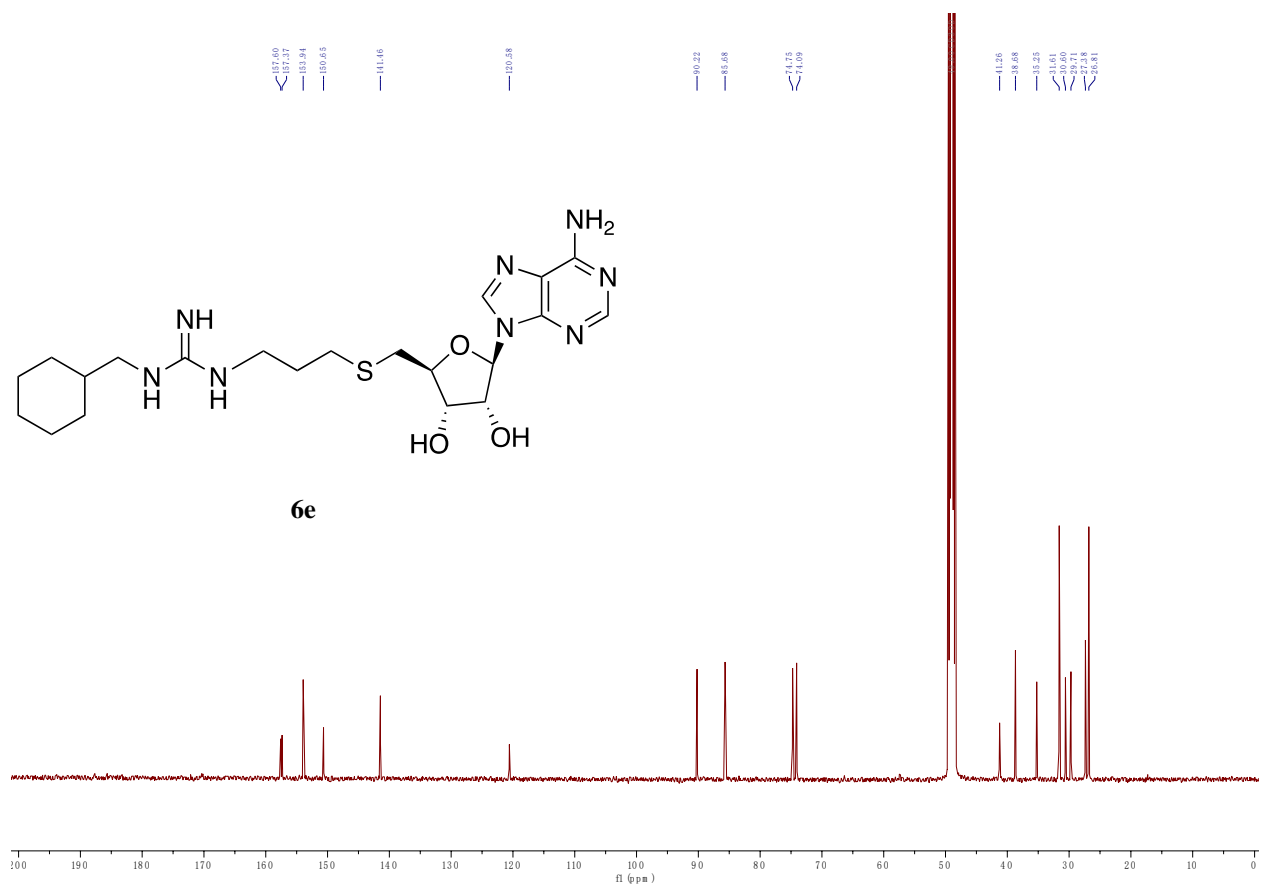
HPLC Spectra of 6d



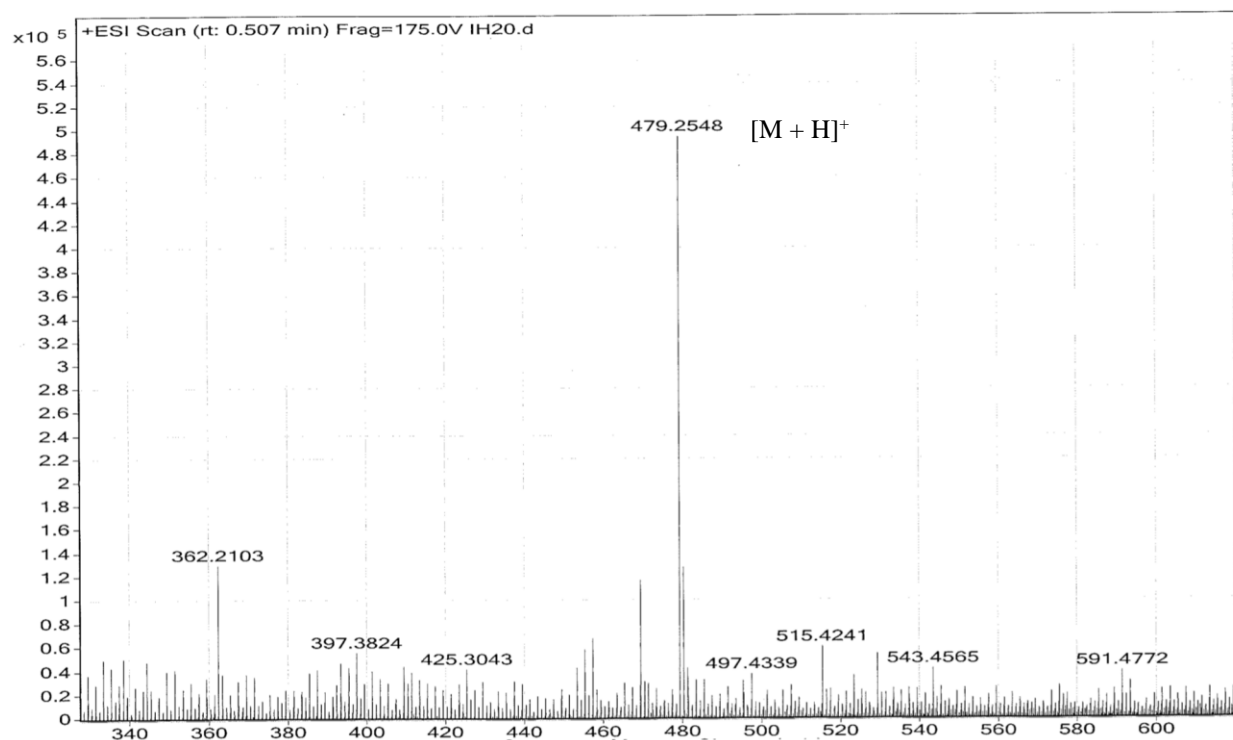


6e

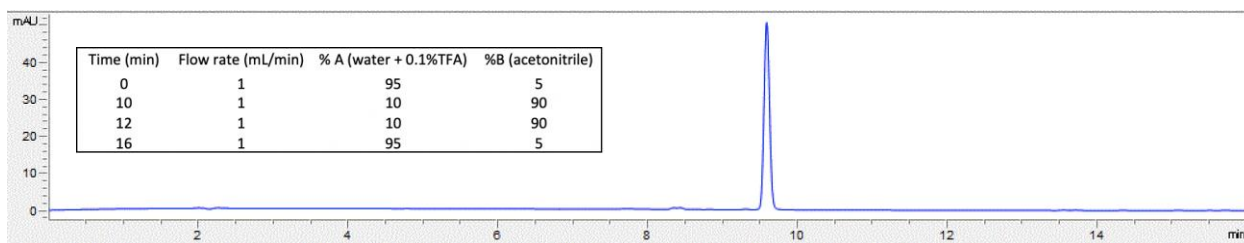


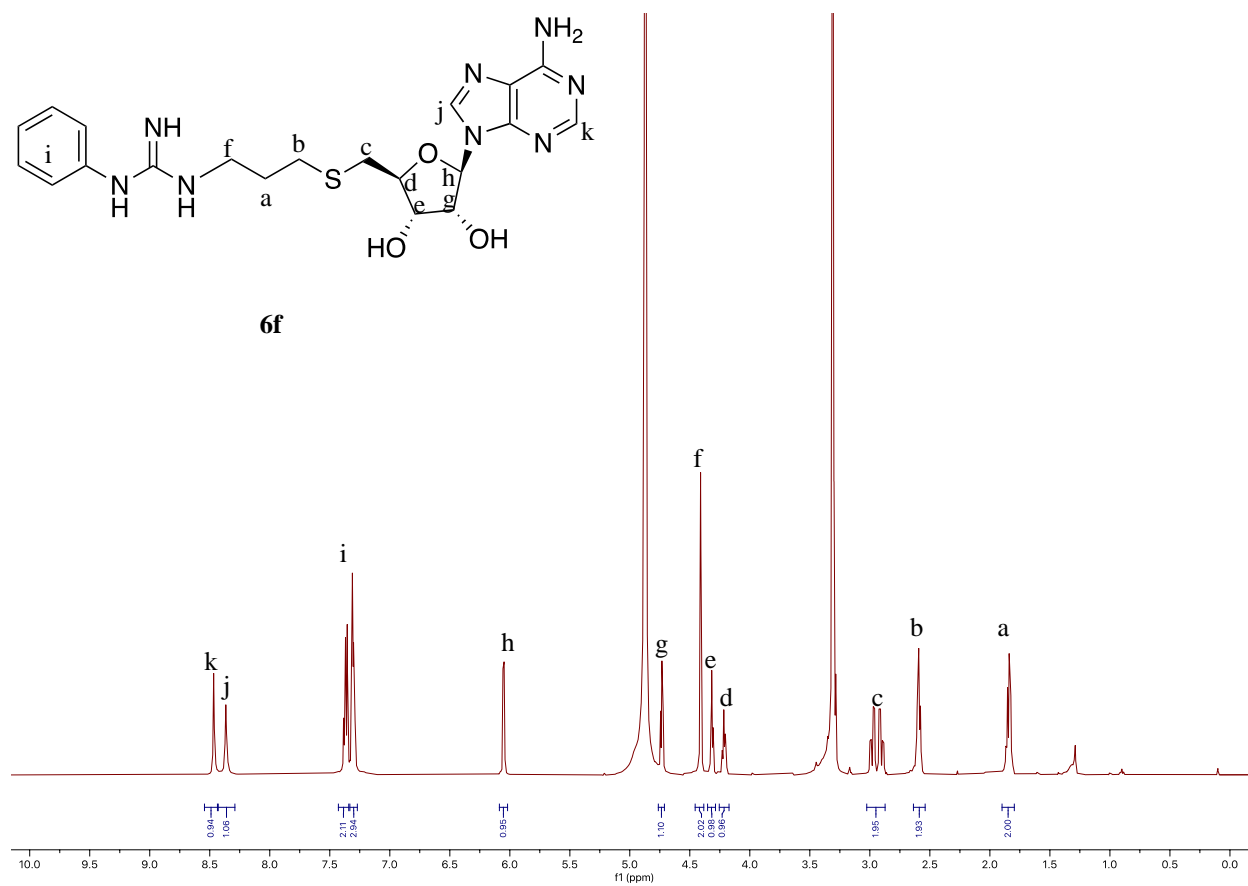


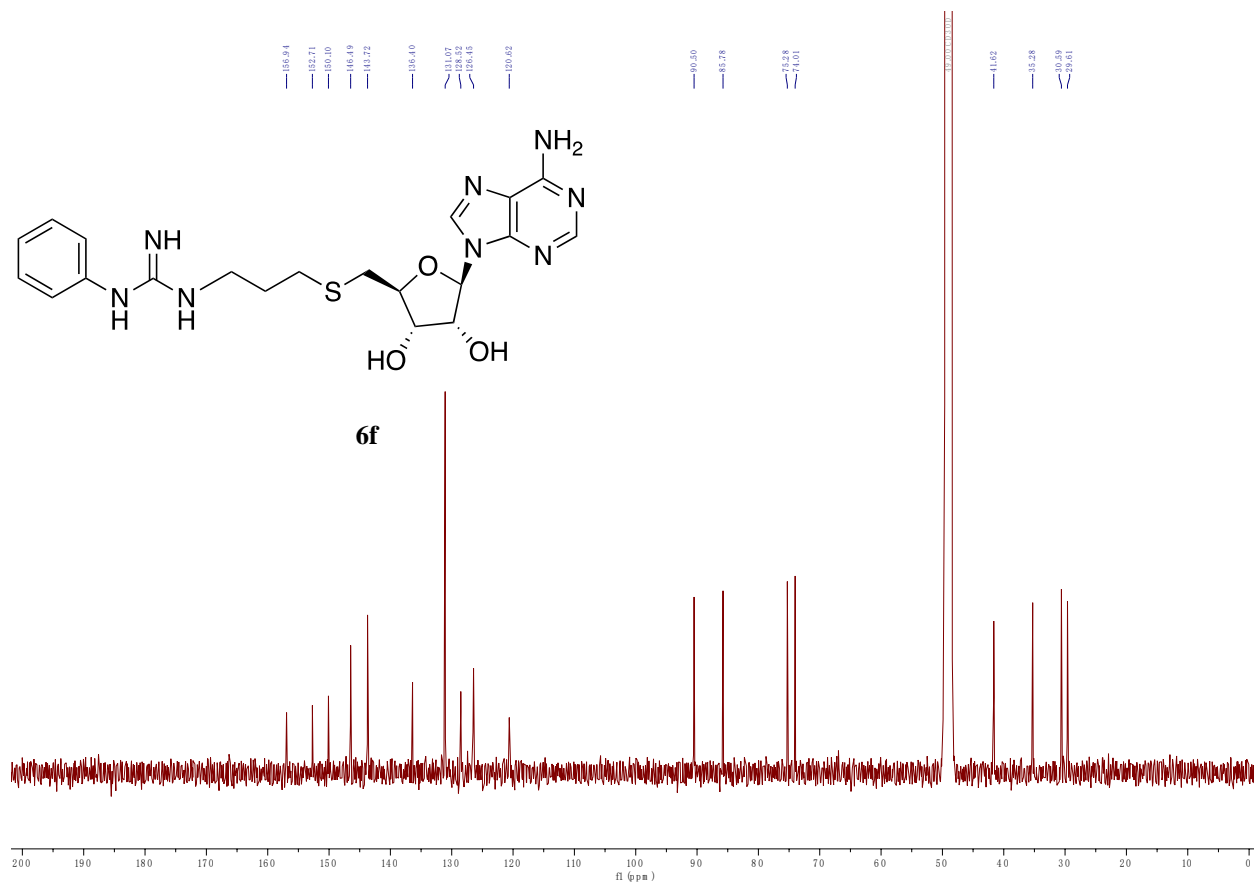
HRMS Spectra of **6e**



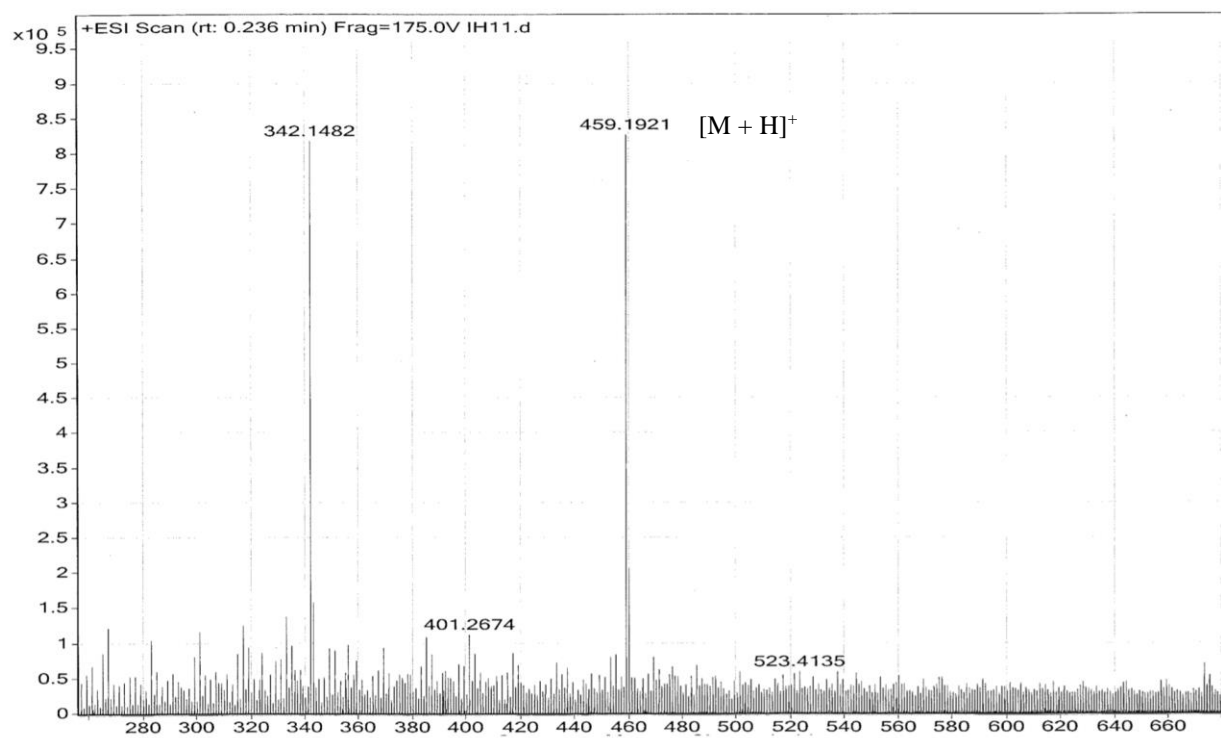
HPLC Spectra of 6e



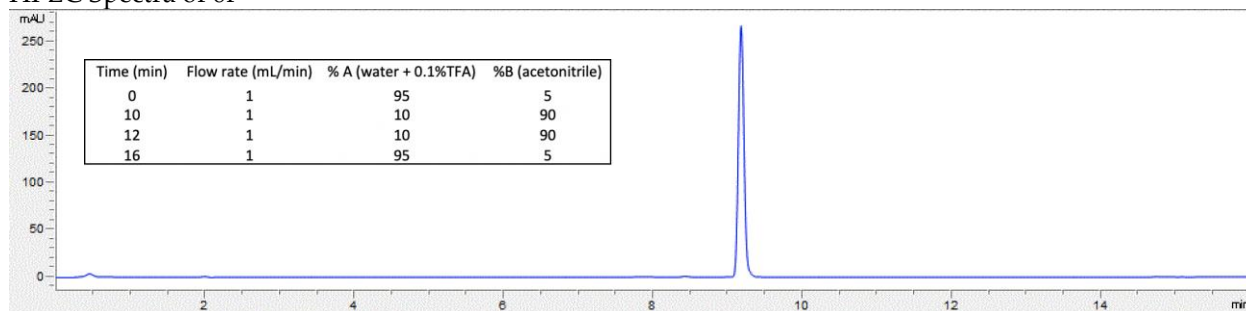


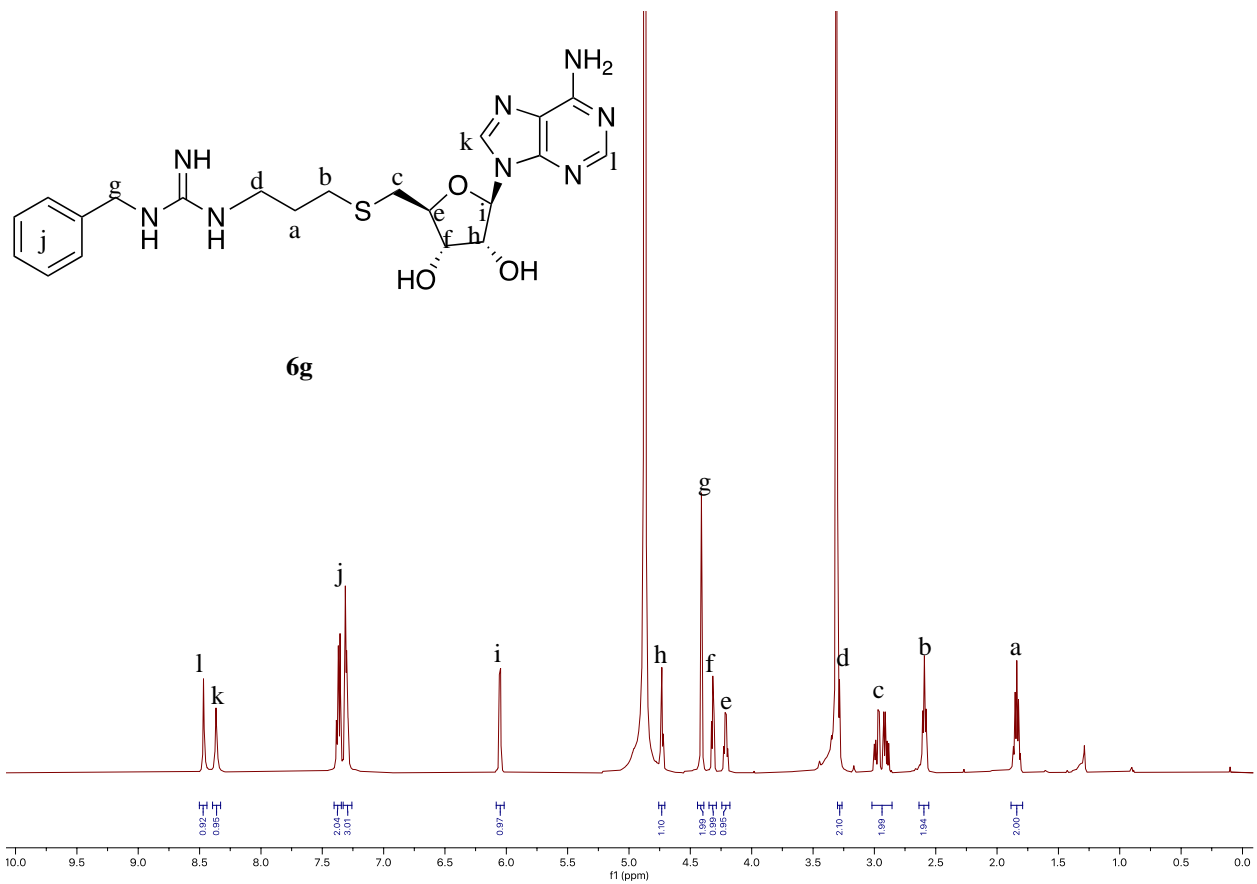


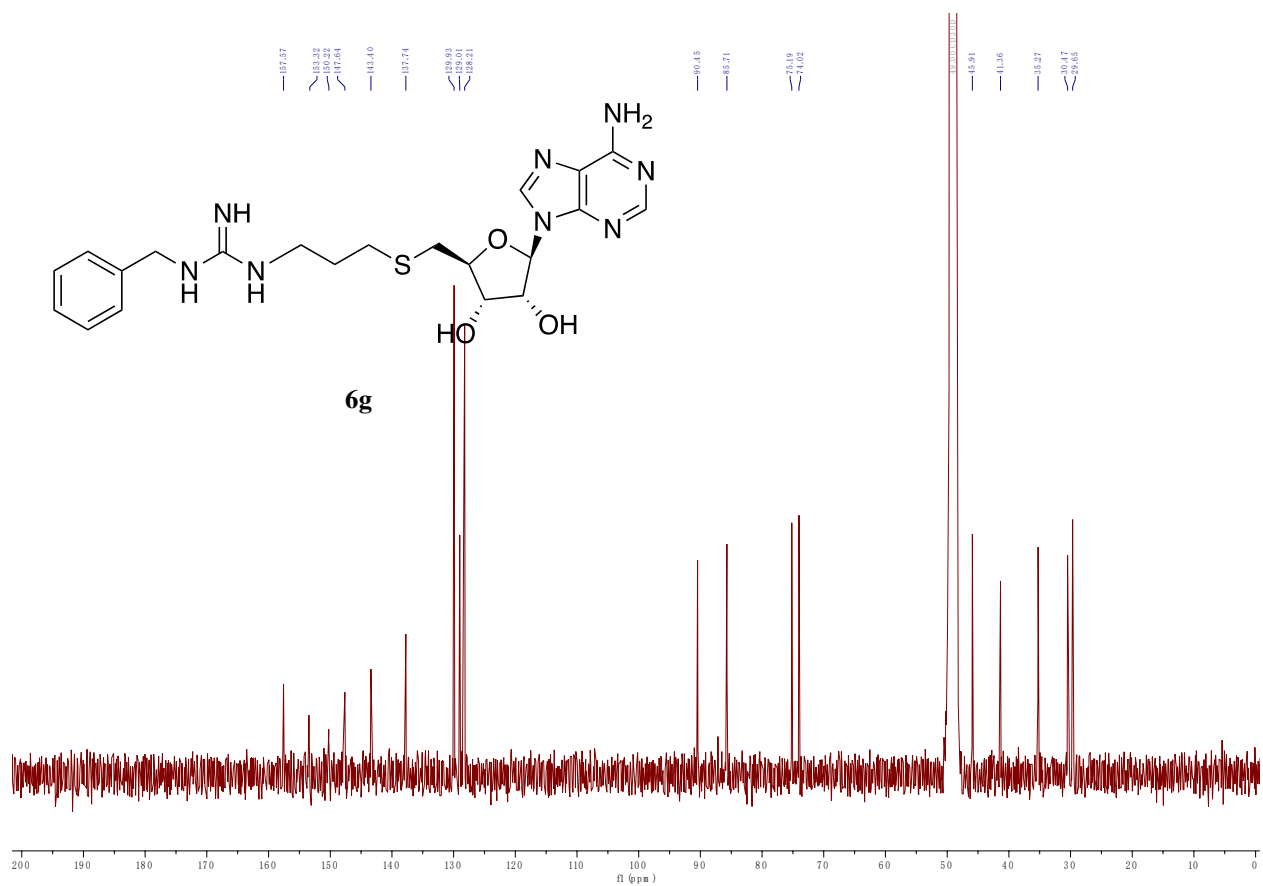
HRMS Spectra of **6f**



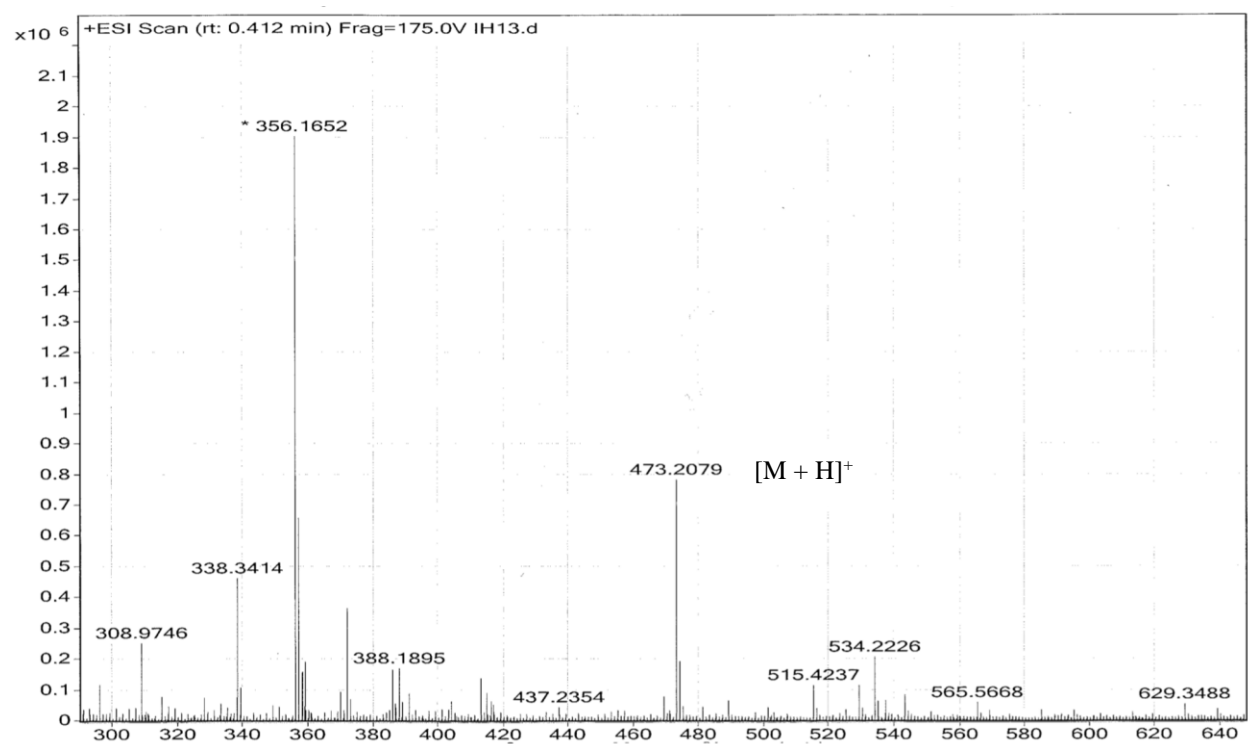
HPLC Spectra of 6f



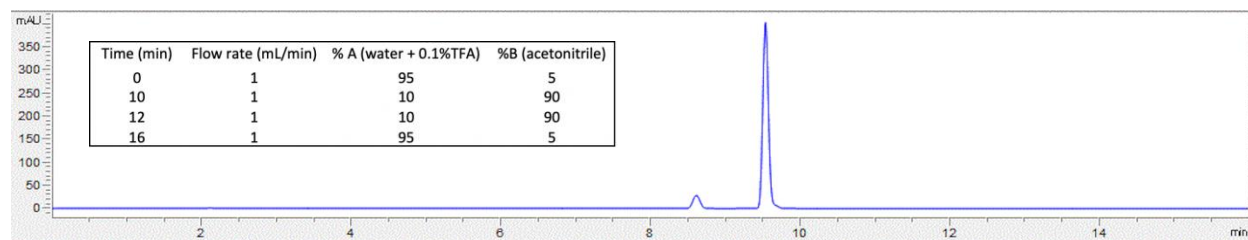


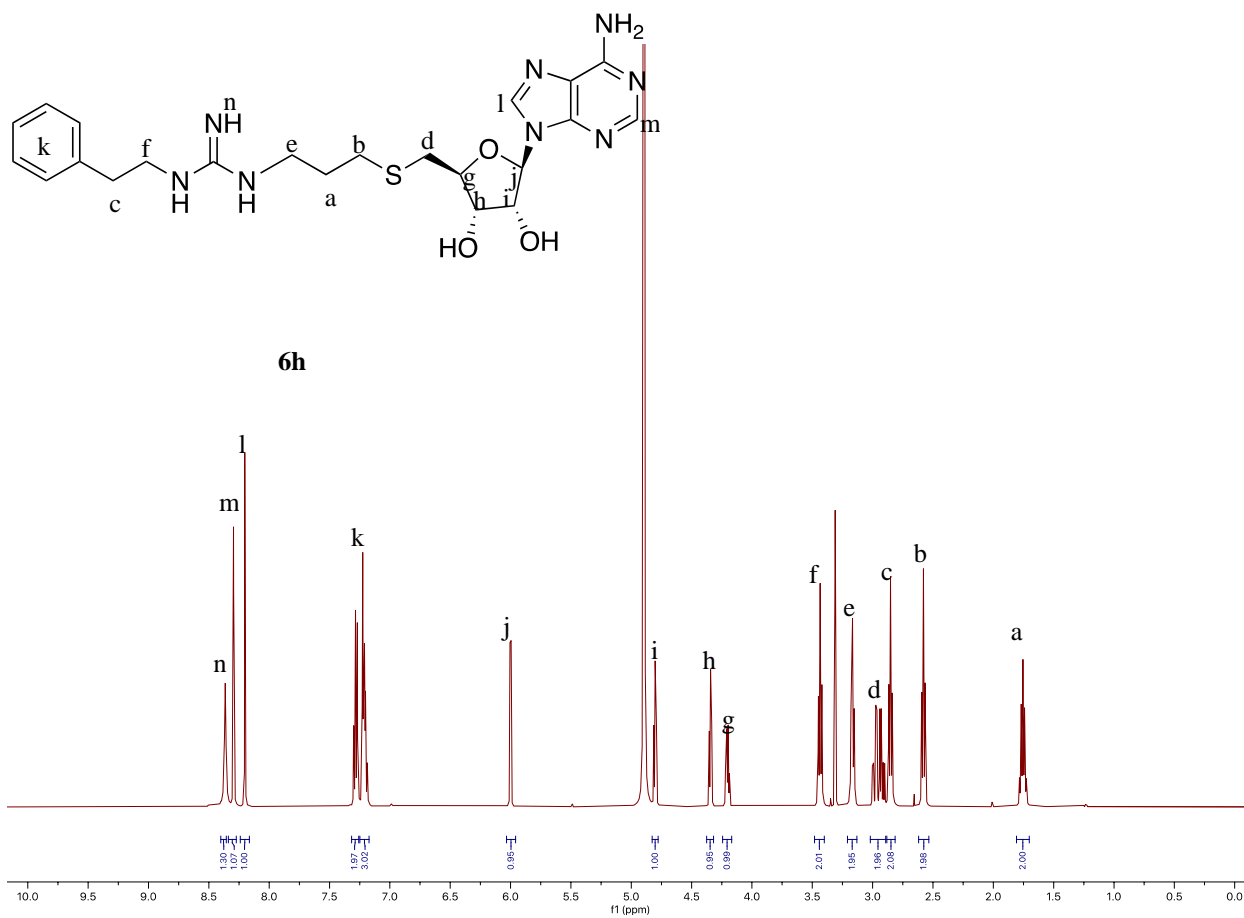


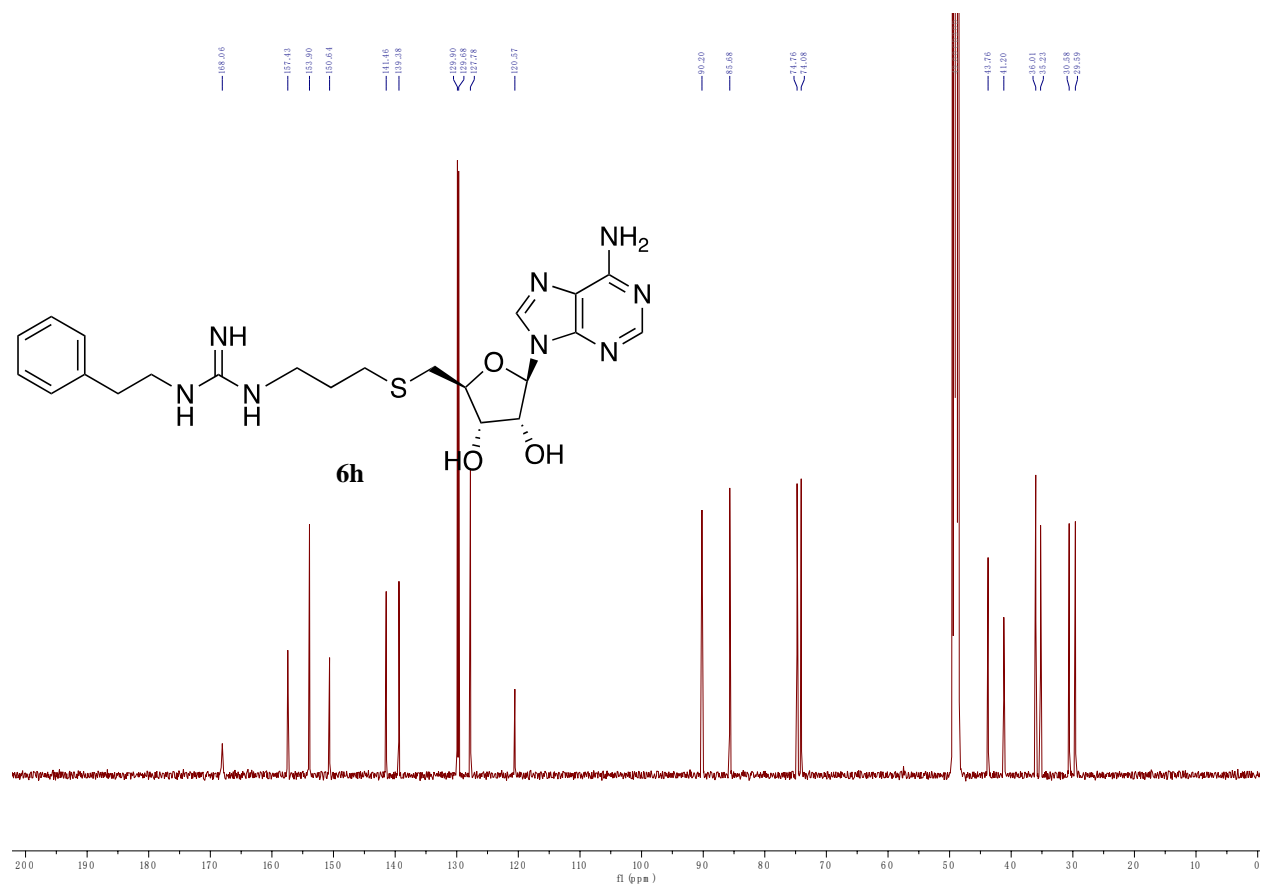
HRMS Spectra of **6g**



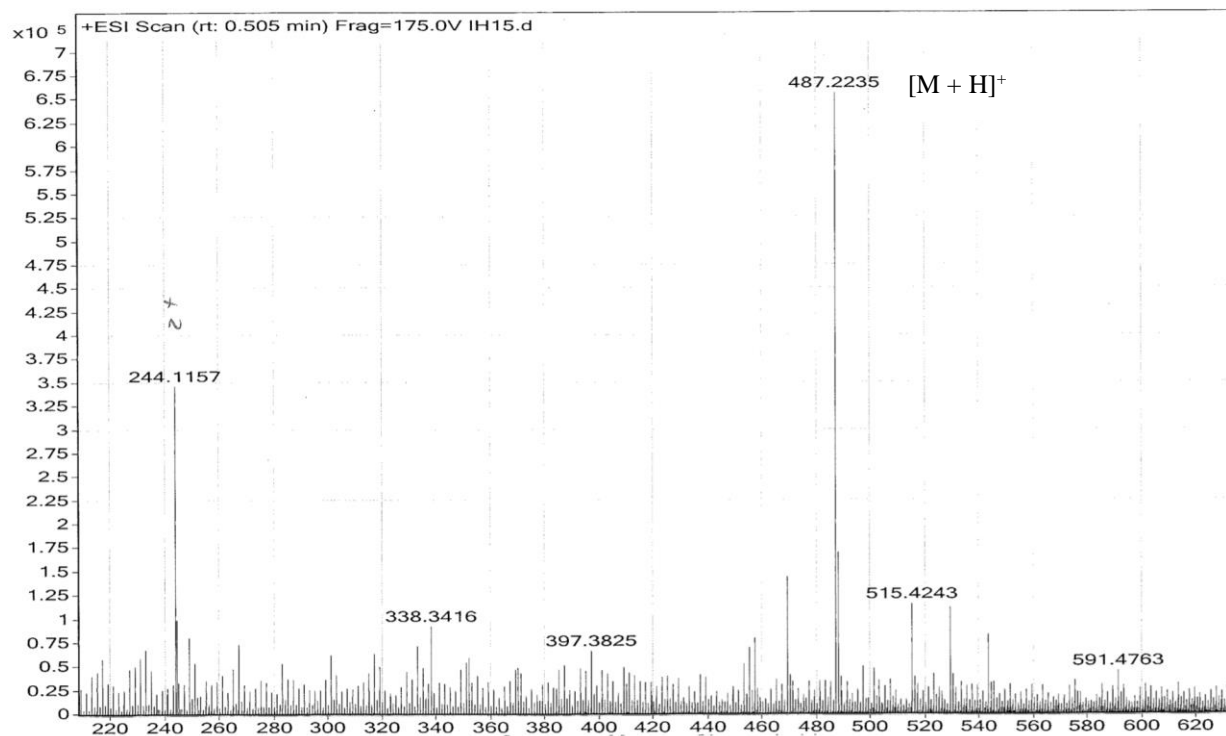
HPLC Spectra of 6g



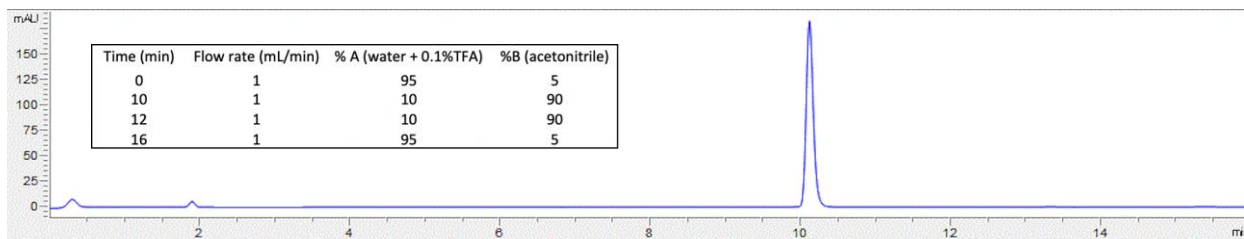


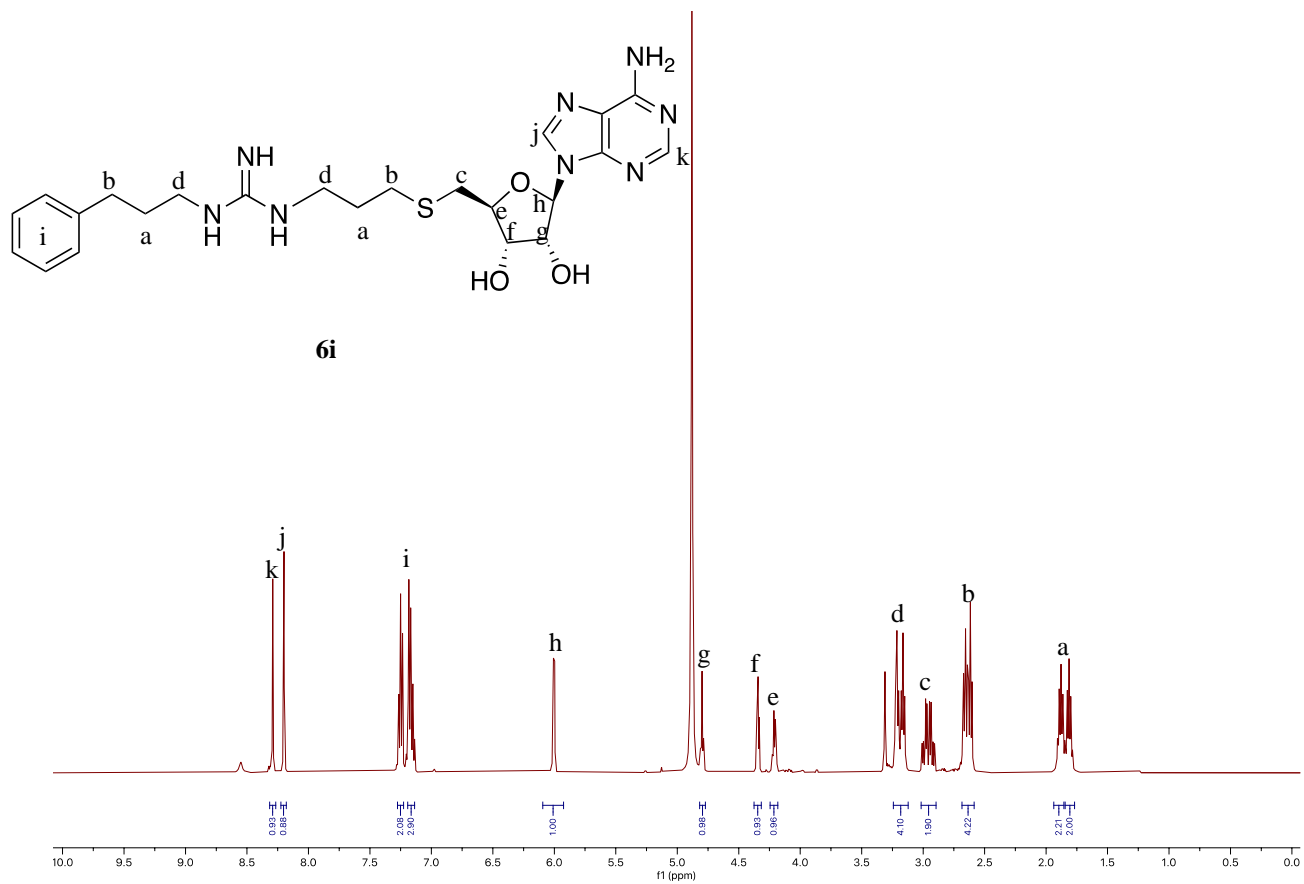


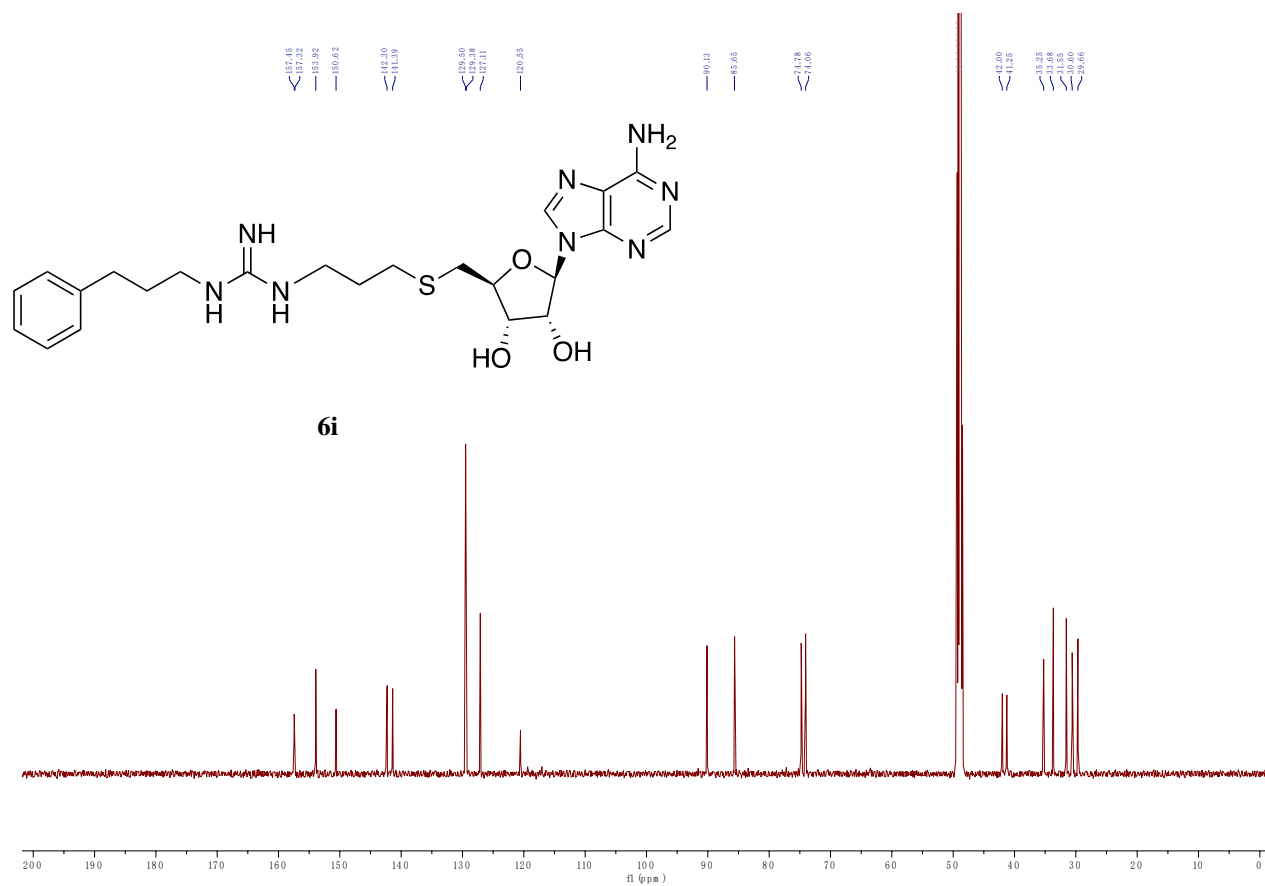
HRMS Spectra of **6h**



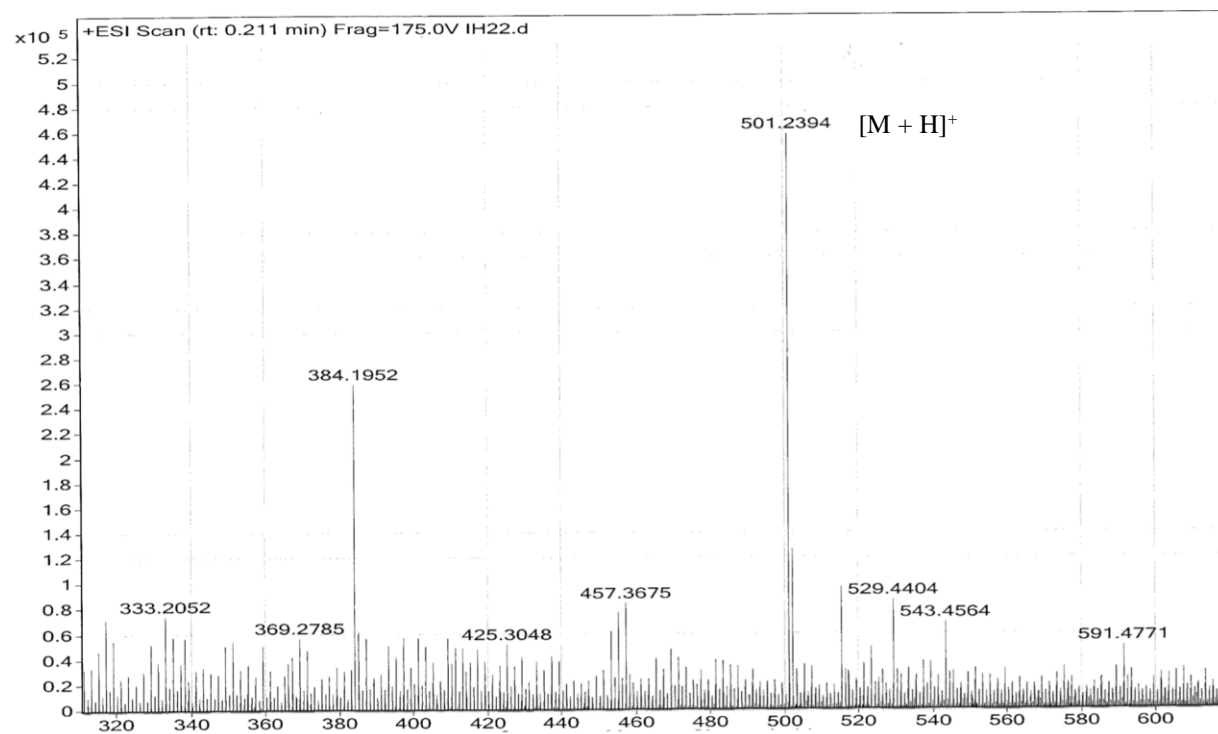
HPLC Spectra of 6h



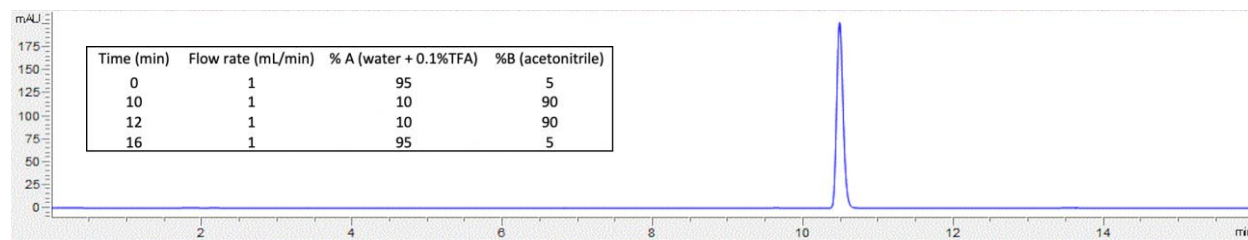


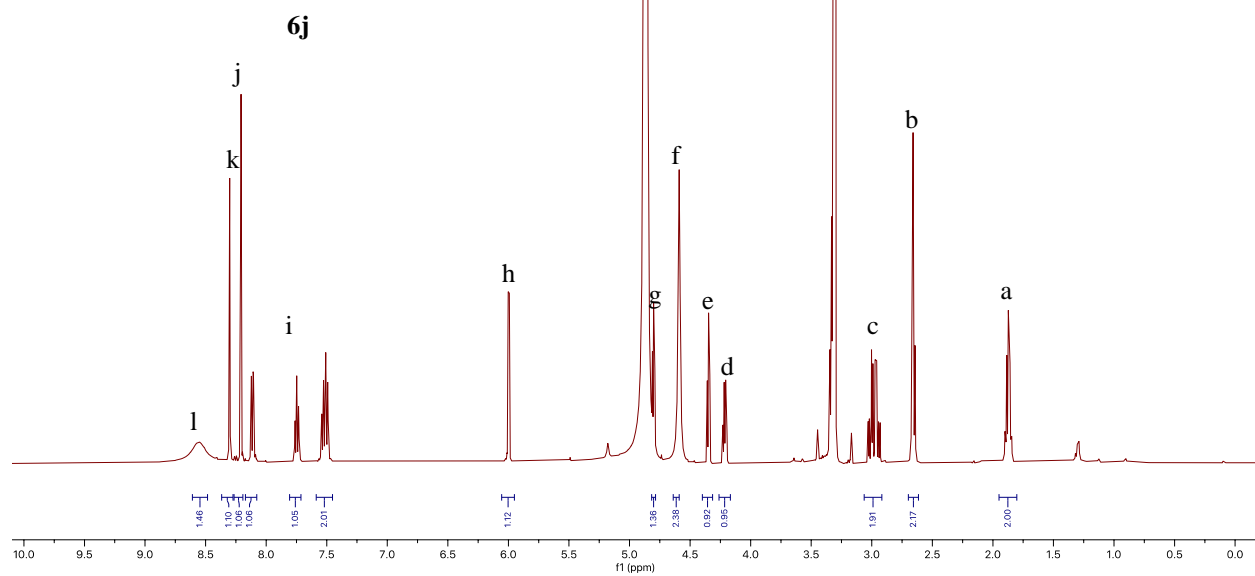
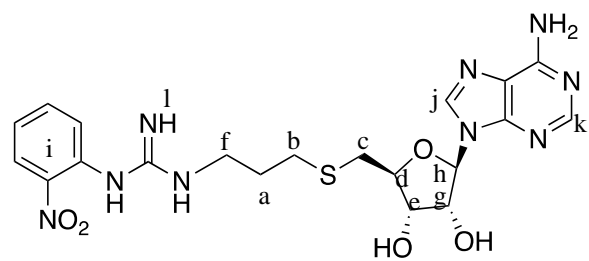


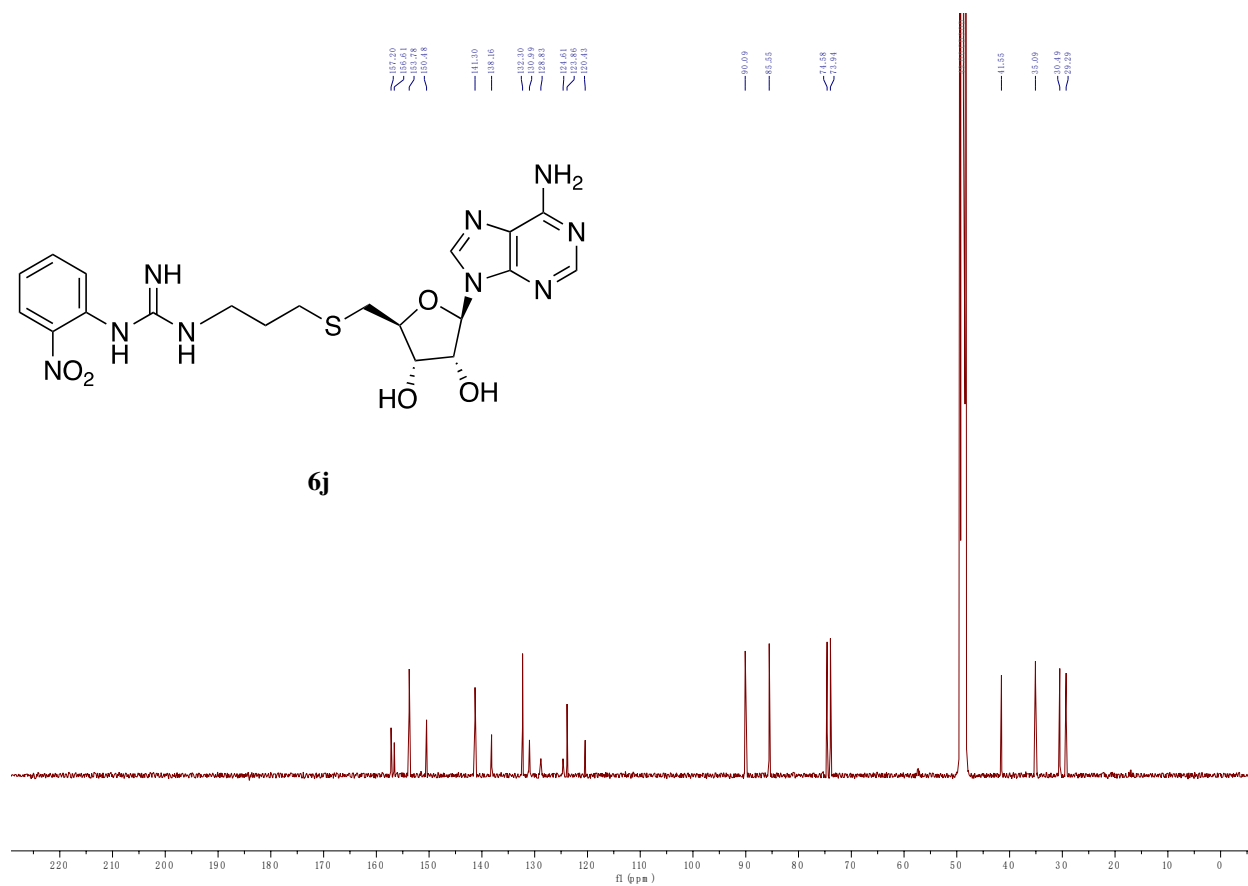
HRMS Spectra of **6i**



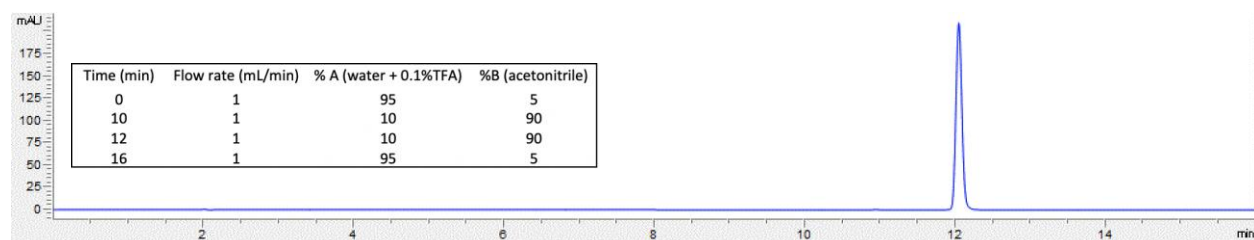
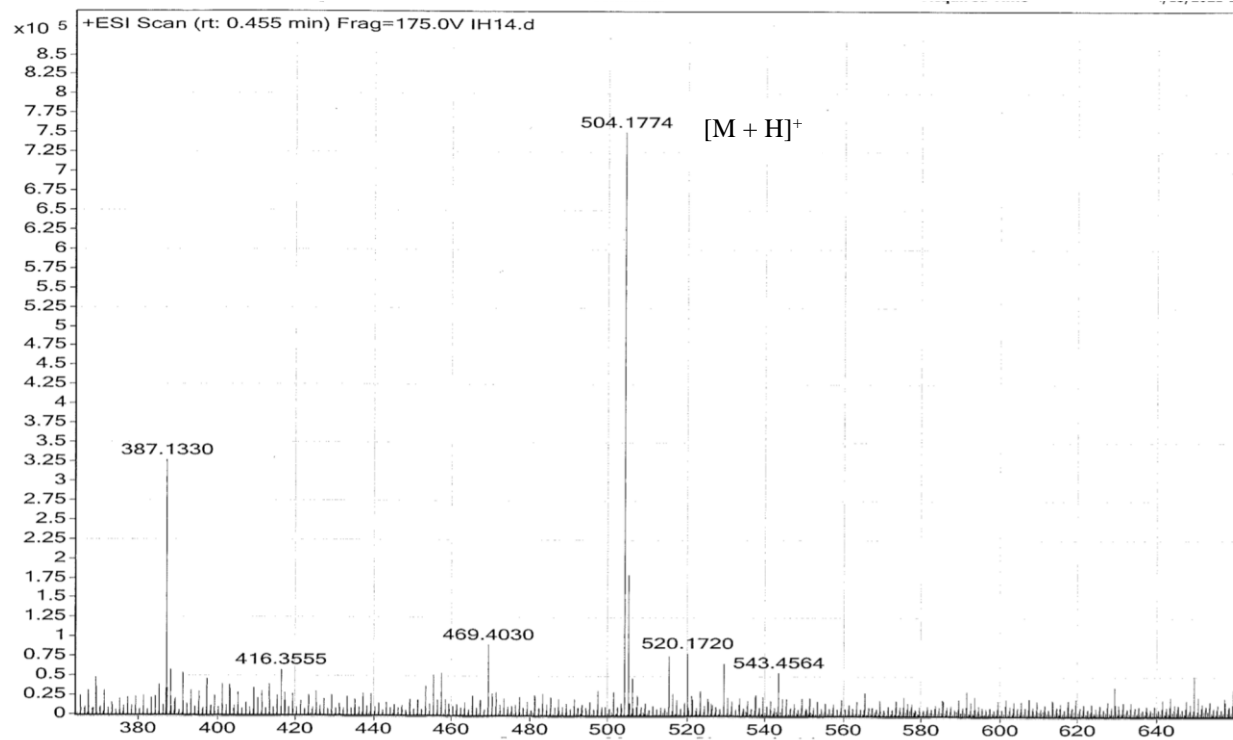
HPLC Spectra of 6i



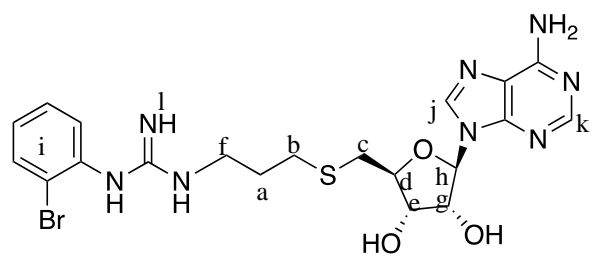




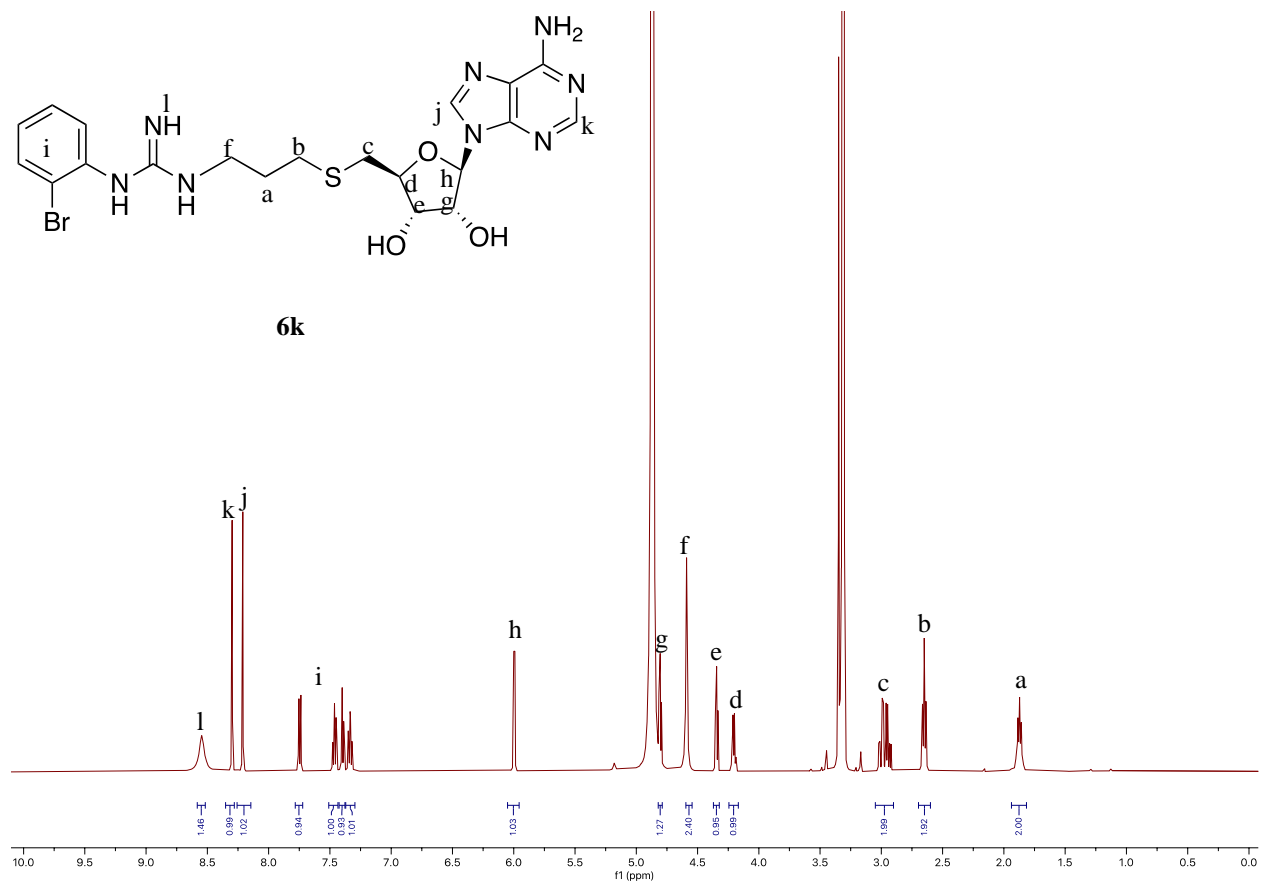
HRMS Spectra of **6j**

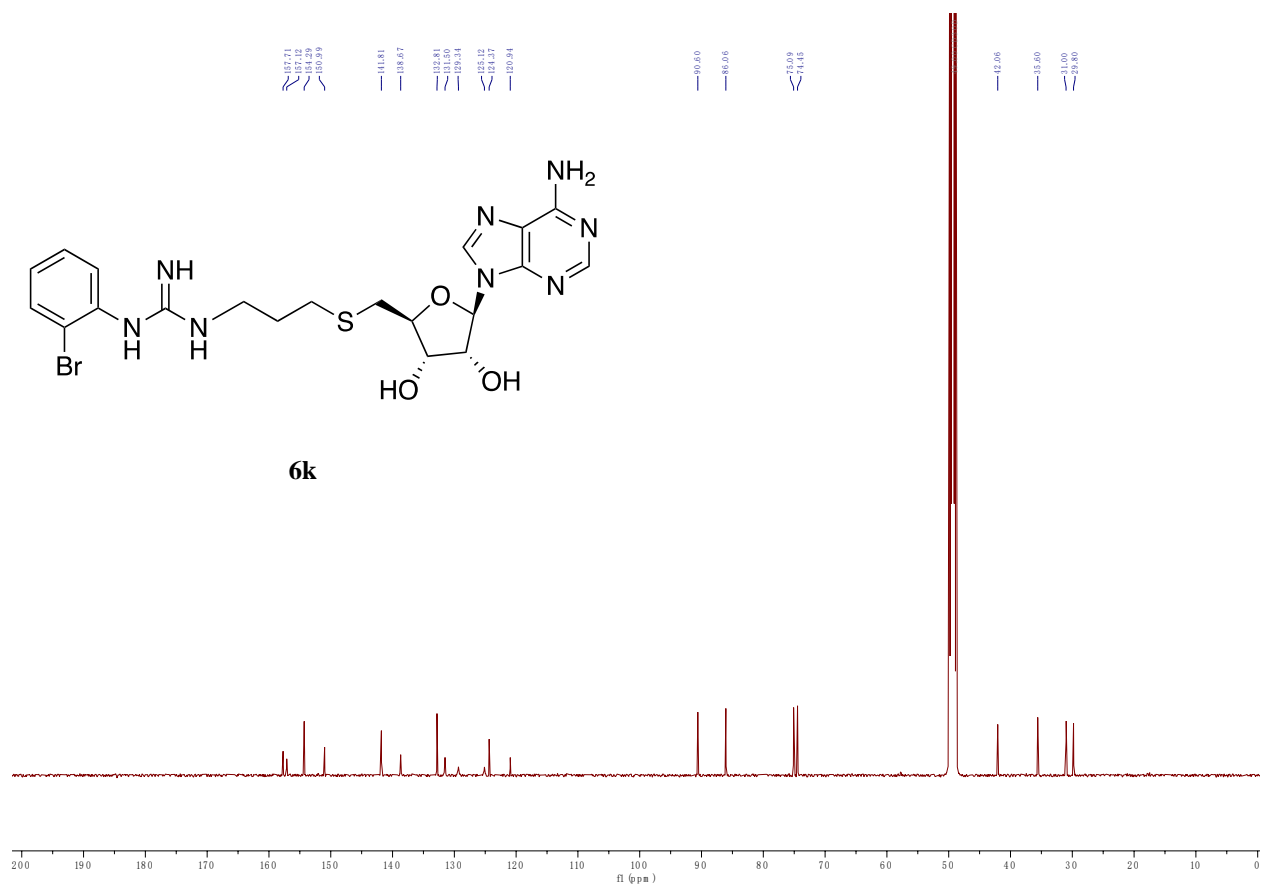


HPLC Spectra of 6j

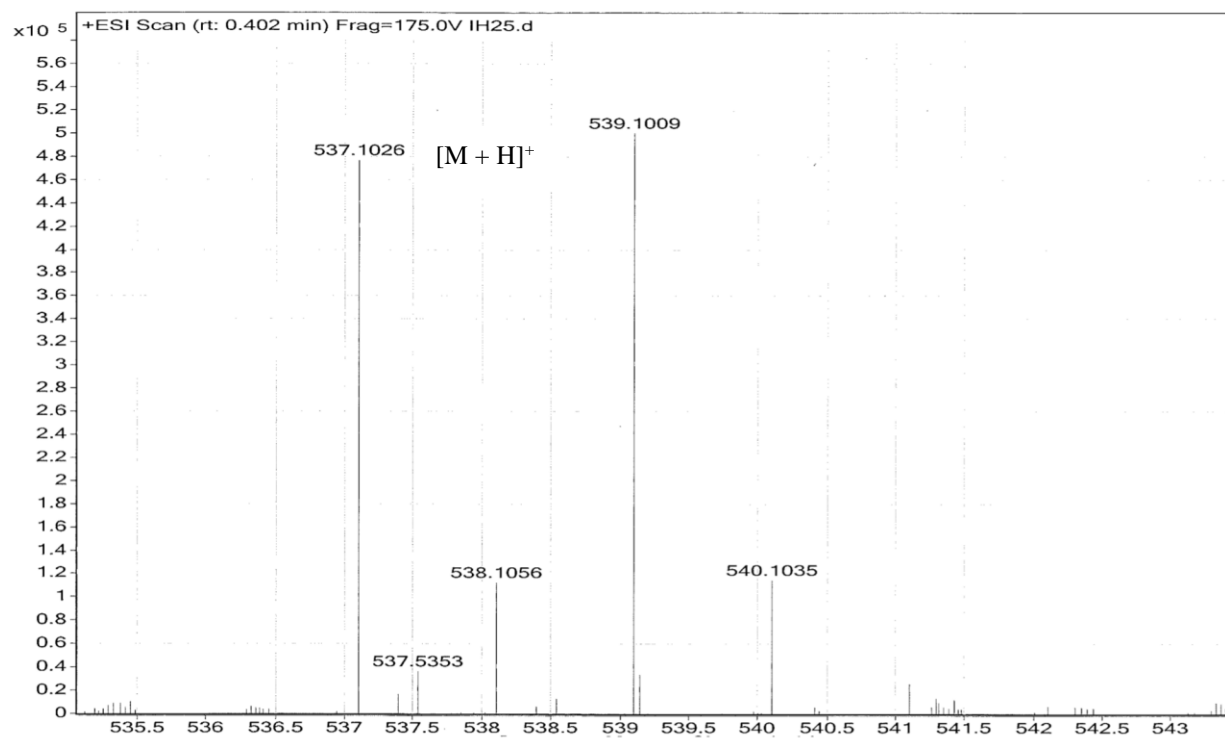


6k

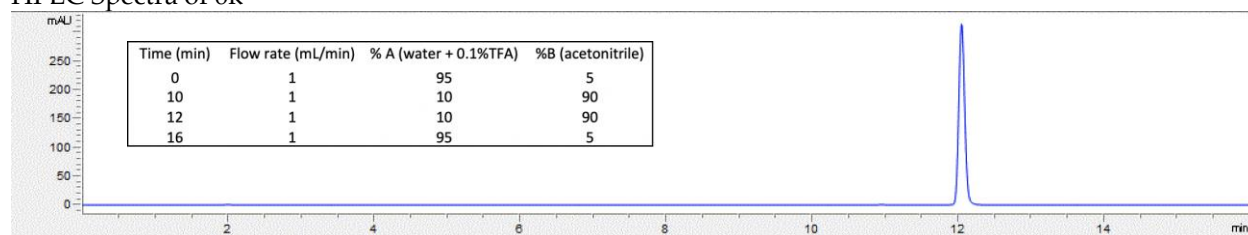


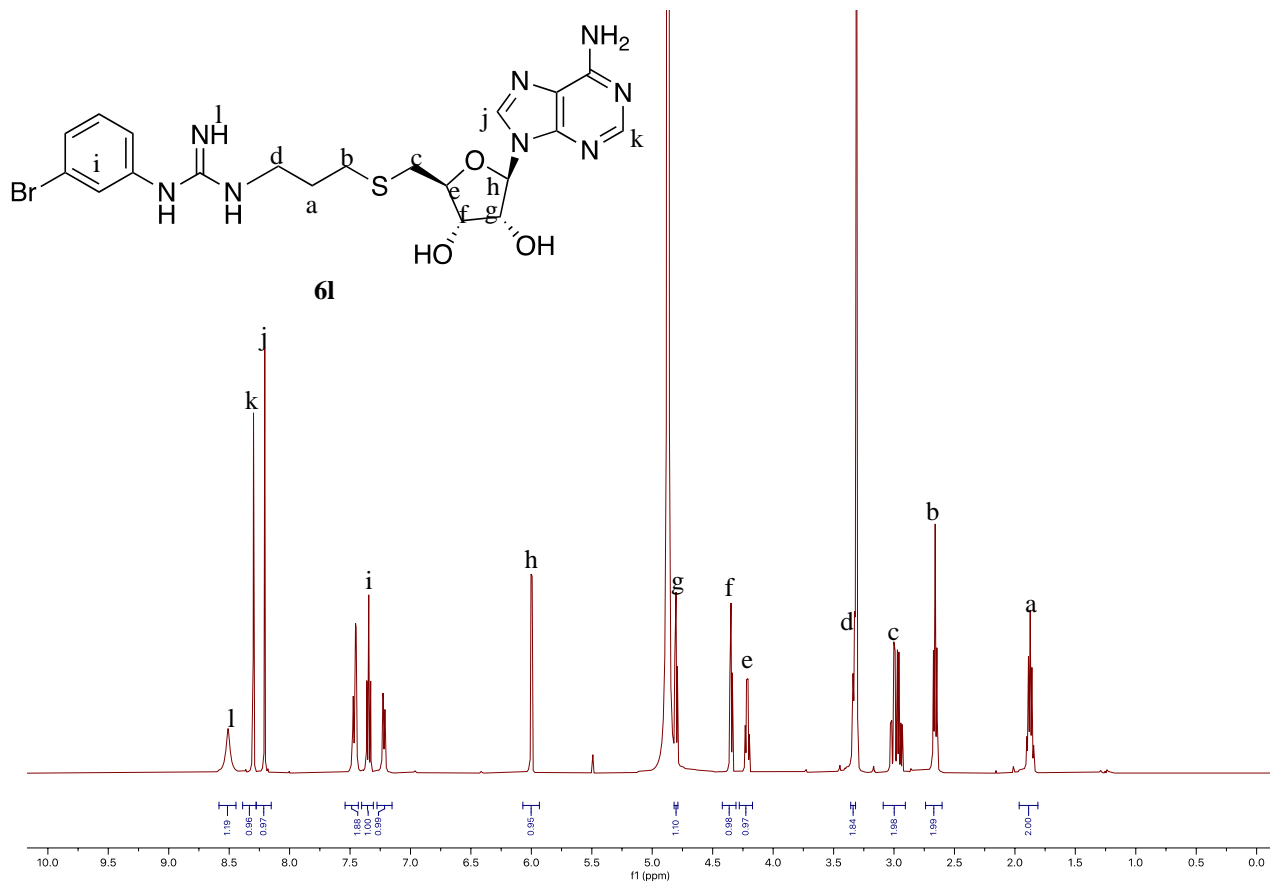


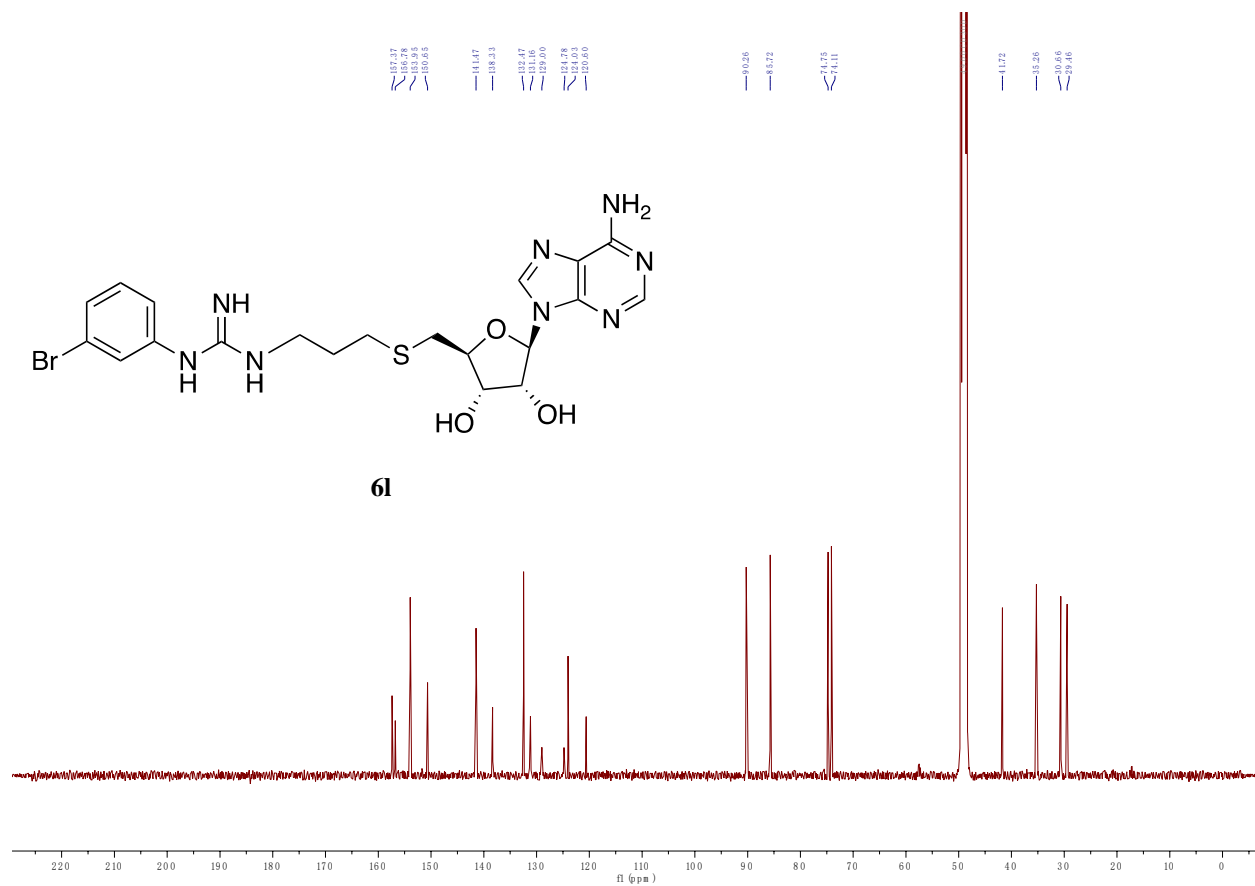
HRMS Spectra of 6k



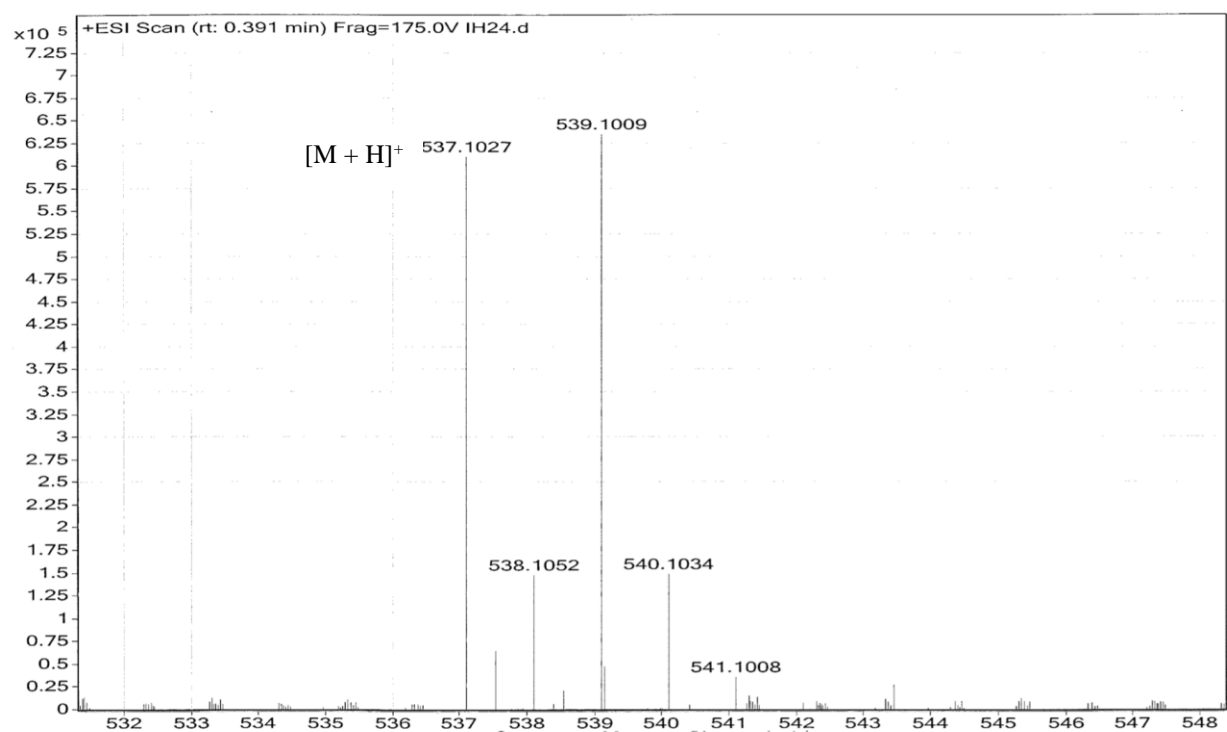
HPLC Spectra of 6k



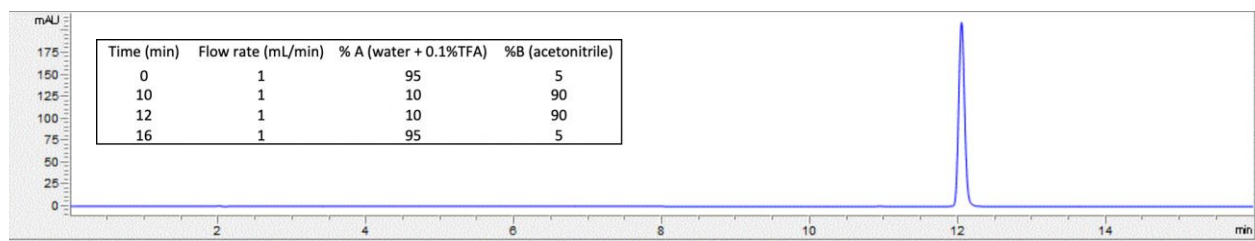


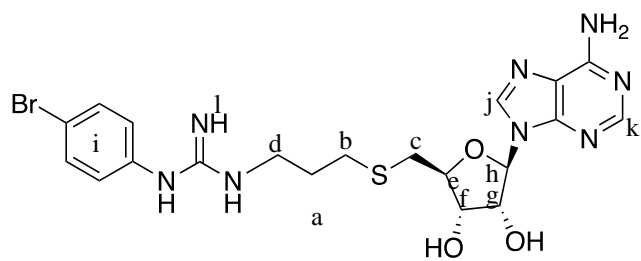


HRMS Spectra of **6l**

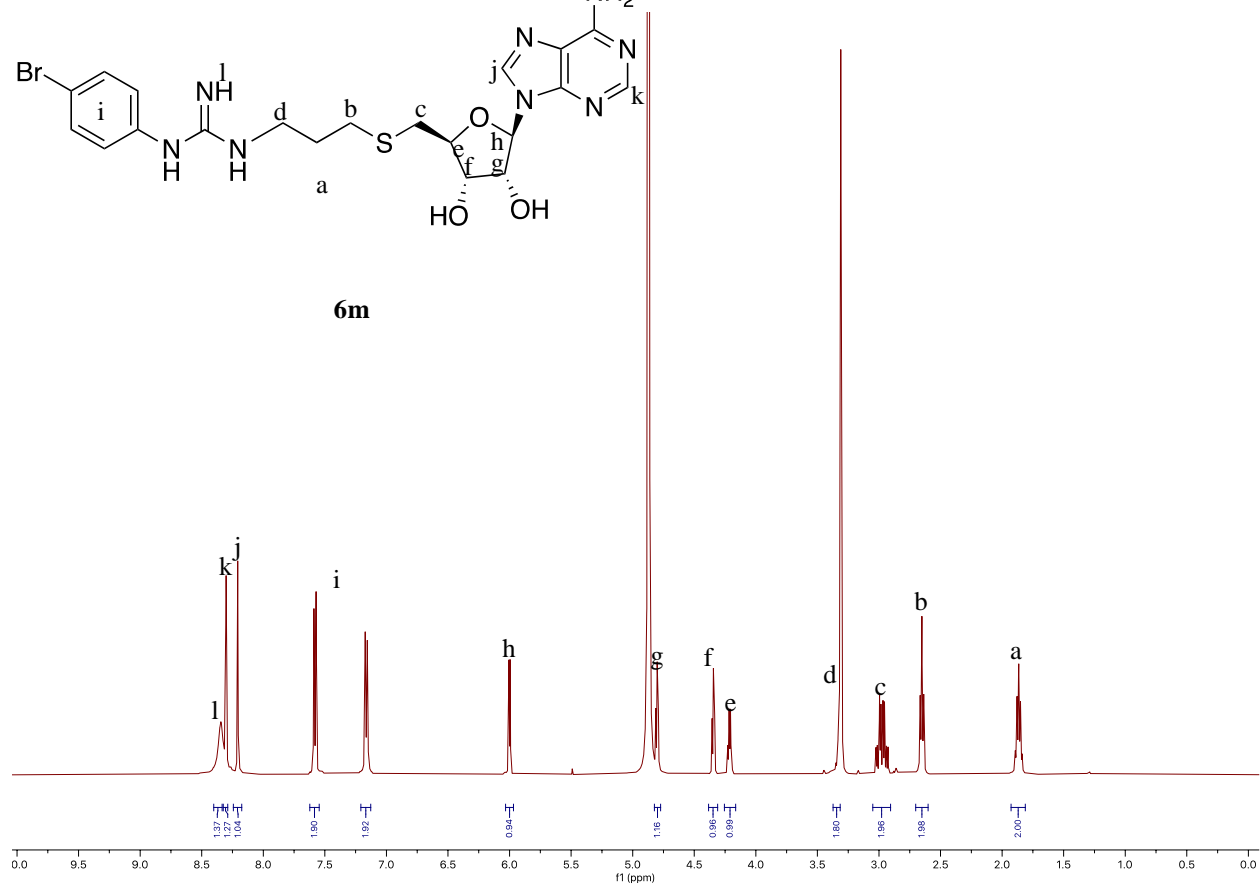


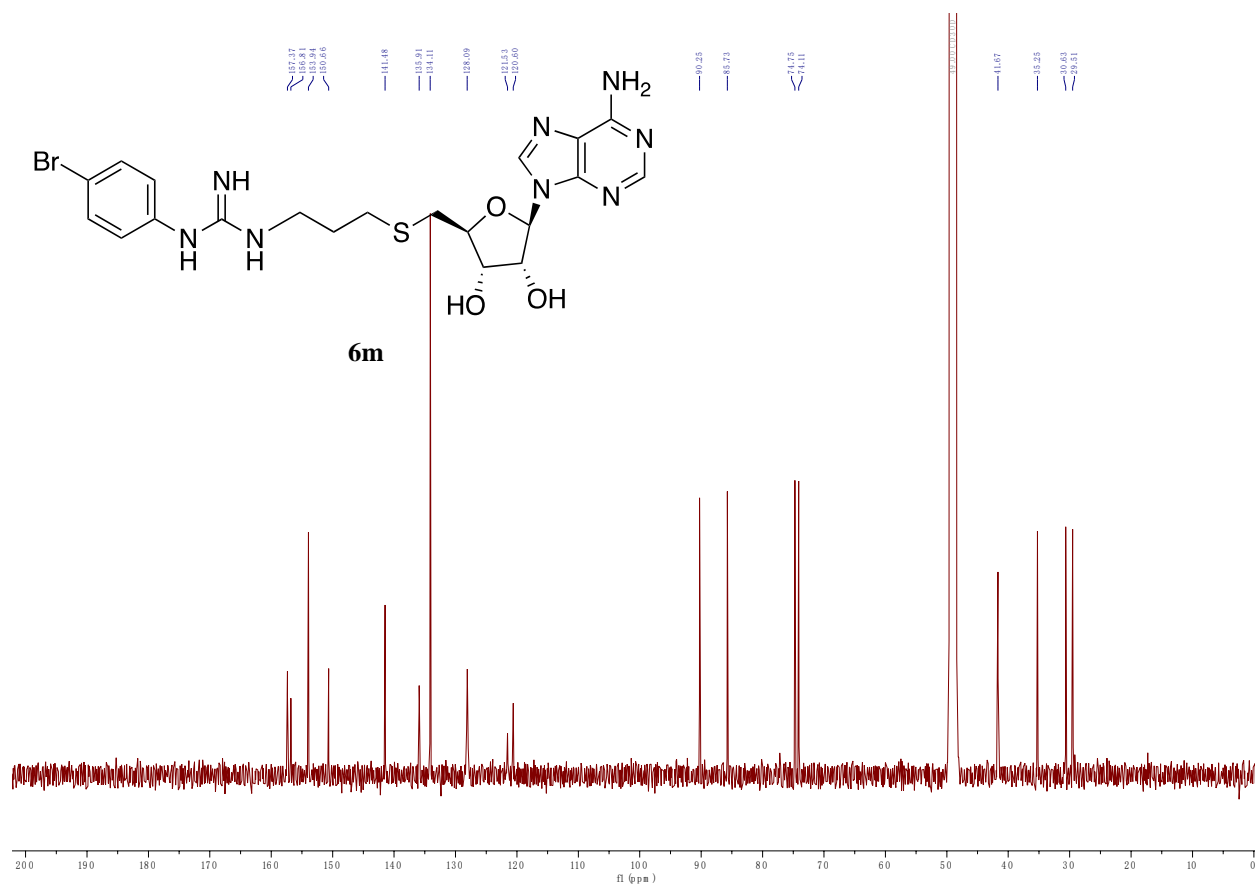
HPLC Spectra of 6l



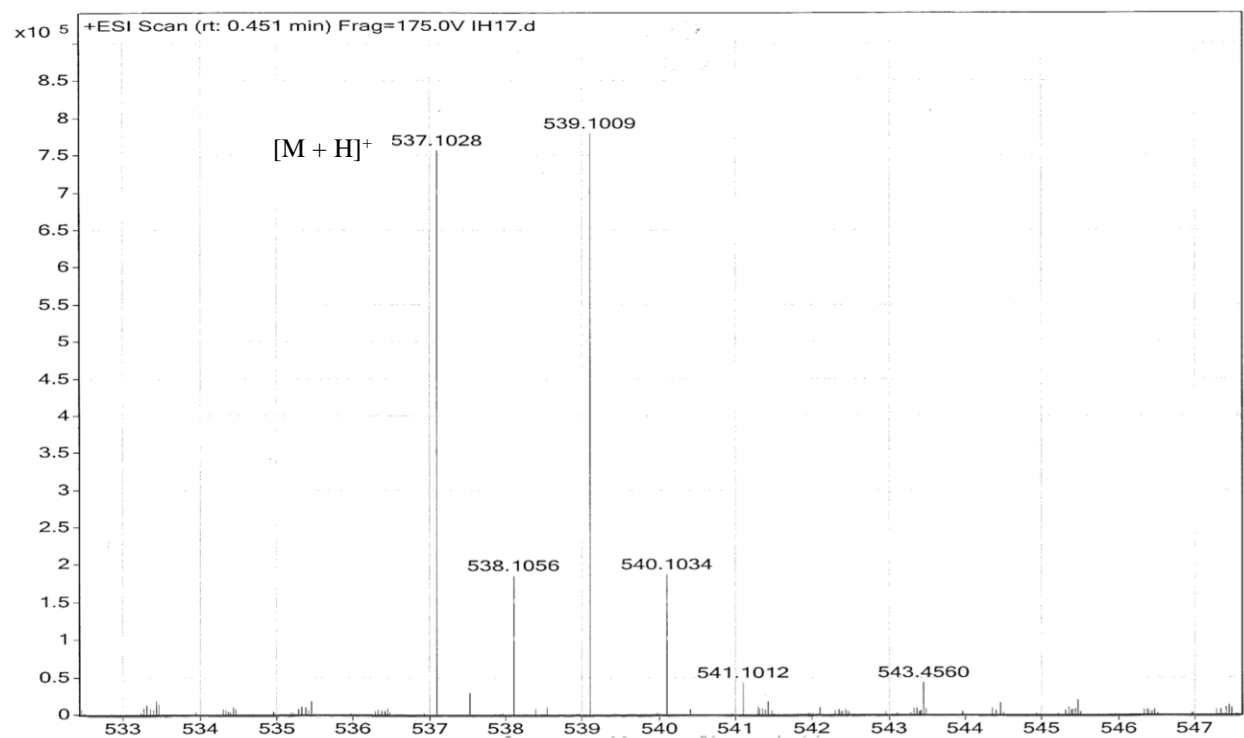


6m

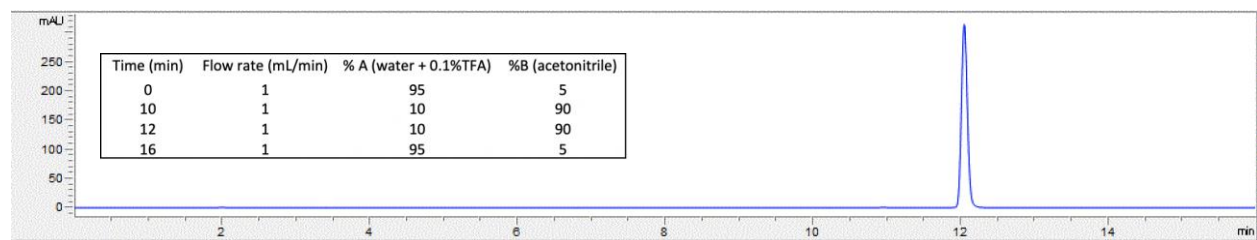


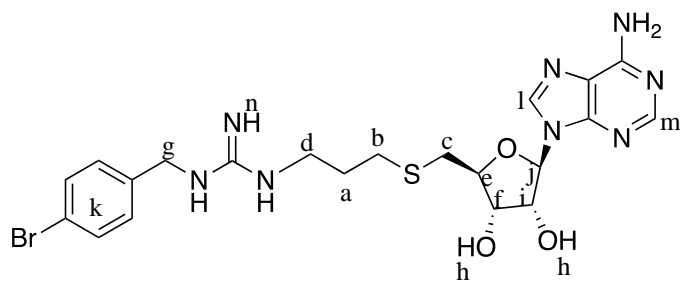


HRMS Spectra of **6m**

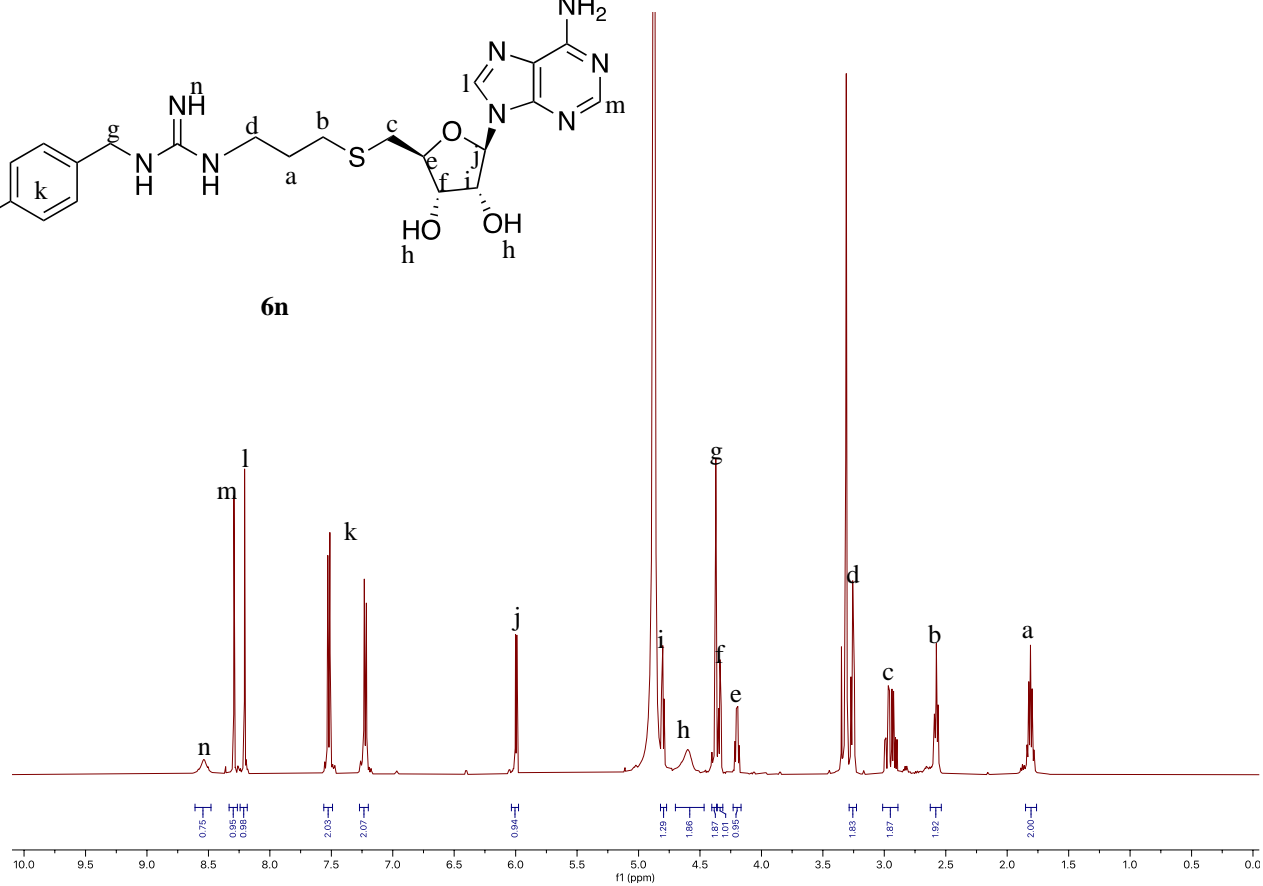


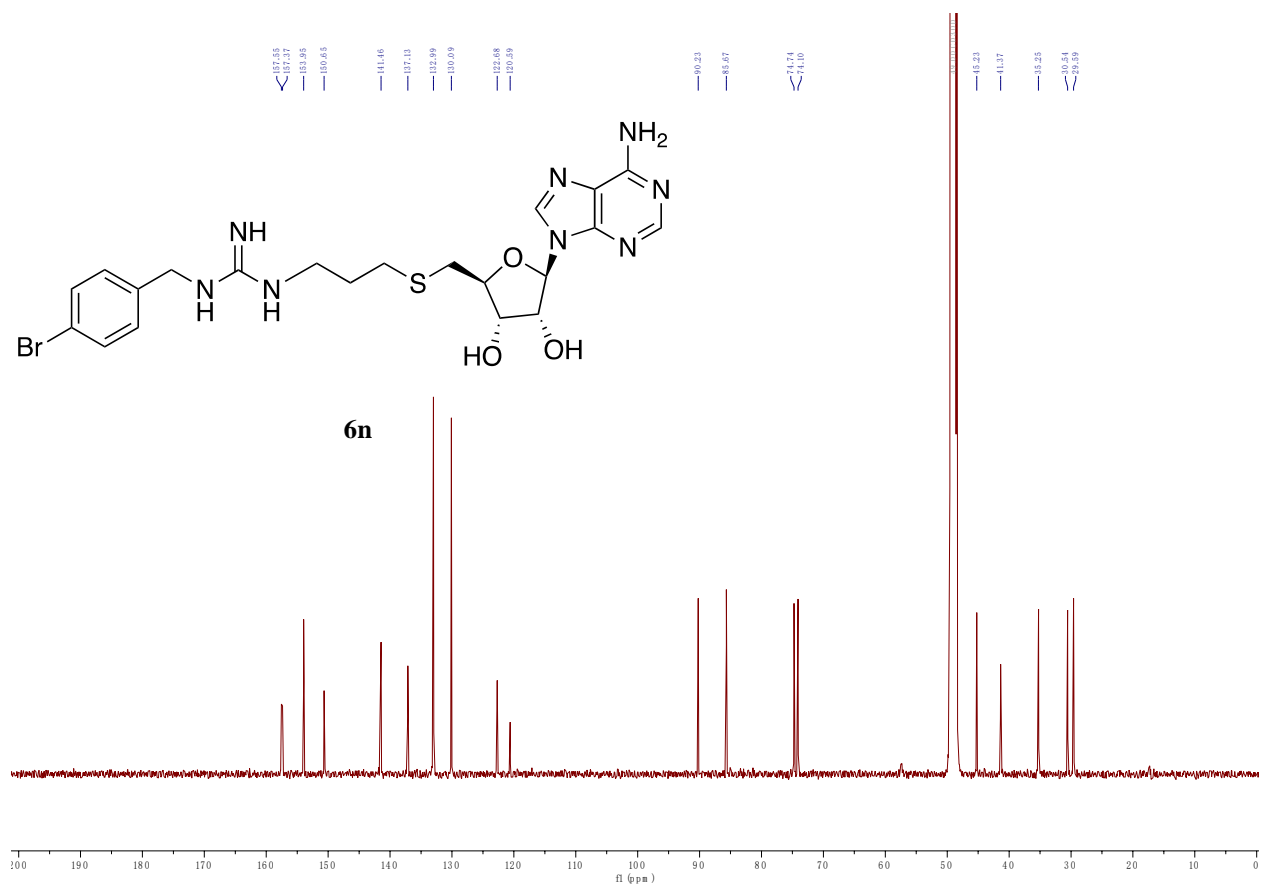
HPLC Spectra of 6m



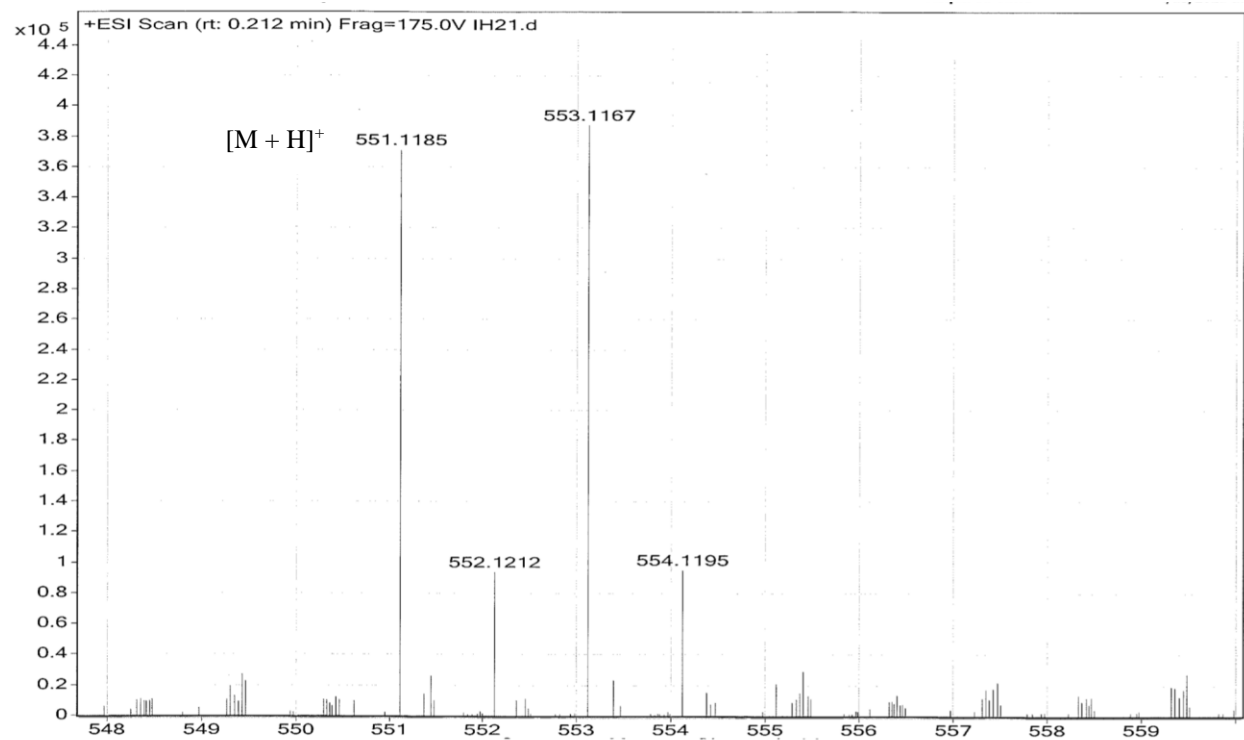


6n





HRMS Spectra of **6n**



HPLC Spectra of 6n

