

## Supplementary files

### **Double-Stranded RNAs (dsRNAs) as a Sustainable Tool against Gray Mold (*Botrytis cinerea*) in Grapevine: Effectiveness of Different Application Methods in an Open-Air Environment**

Luca Nerva<sup>1,2,\*</sup>, Marco Sandrini<sup>1,3</sup>, Giorgio Gambino<sup>2</sup>, Walter Chitarra<sup>1,2,\*</sup>

<sup>1</sup>Research Centre for Viticulture and Enology, Council for Agricultural Research and Economics (CREA-VE), Via XXVIII Aprile 26, 31015 Conegliano (Italy)

<sup>2</sup>Institute for Sustainable Plant Protection, National Research Council (IPSP-CNR), Strada delle Cacce 73, 10135 Torino (Italy)

<sup>3</sup>Dipartimento di Scienze Agroalimentari, Ambientali e Animali, Università degli Studi di Udine, Via delle Scienze 206, 33100 Udine (Italy)

#### **\*Corresponding authors**

Luca Nerva and Walter Chitarra

Research Centre for Viticulture and Enology, Council for Agricultural Research and Economics (CREA-VE), Via XVIII Aprile 26, 31015 Conegliano (Italy)

Institute for Sustainable Plant Protection, National Research Council (IPSP-CNR), Strada delle Cacce 73, 10135 Torino (Italy)

Tel: +390438456712

Fax: +390438450773

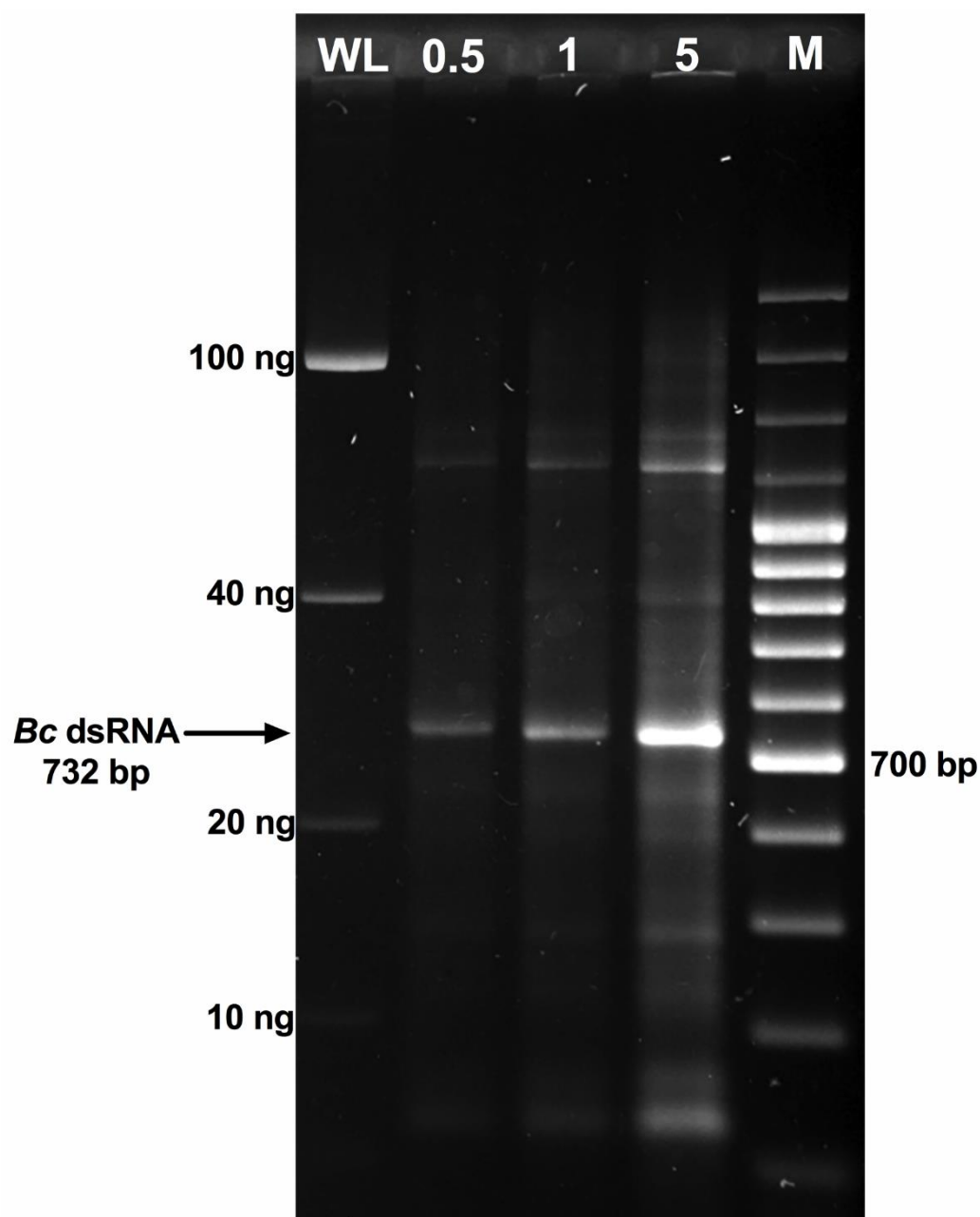
e-mail: [walter.chitarra@crea.gov.it](mailto:walter.chitarra@crea.gov.it)

[luca.nerva@crea.gov.it](mailto:luca.nerva@crea.gov.it)

**Supplementary Table 1.** List of primer designed to be used in overlapping PCR.

Target Gene	NCBI Accession	Primer name	Primer sequence
3-ketosteroid reductase (erg27)	JX436969.1	Bc_3Keto_F	AAAAC TGCAGGATACGGTGGCTCGGGTTCA
		Bc_3Keto_R	TTGAGGGTGCGGCGATTGATCTCGCCTTCAGACCCTTCCT
Chitin syntase 1 (CHS1)	XM_024694912.1	Bc_CHS1_F	AGGAAGGGTCTGAAGGCGAGATCAATCGCCGCACCCTCAA
		Bc_CHS1_R	TGCCATACTCGACACCCTCCTGGGATTGAGGGGCATGC
Elongation factor 2 (ef2)	XM_024693463.1	Bc_EF2_F	GCATGCCCCTCAATCCCAGGAGGGTGTCTGAGTATGGCA
		Bc_EF2_R	AAAAC TGCAGGCGGGGAGGAAGTCTGTGAC
Green fluorescent protein (GFP)	From pCBCT plasmid	GFP_F	AAAAC TGCAGACCCTGAAGTTCATCTGCACCAC
		GFP_R	AAAAC TGCAGGATCTTGAAGTTGACCTTGATGCC

**Supplementary Figure 1.** Agarose gel electrophoretic analysis of *Bc* dsRNA fragments after DNase treatment. Samples were loaded as 0.5-1-5  $\mu$ L of total nucleic acid isolation as detailed in Materials and Methods section. WL: weighed ladder; M: size molecular marker.



**Supplementary Figure 2.** Overview of *in vivo* petiole adsorption application method.



**Supplementary Figure 3.** Northern blot analysis of *Bc* dsRNA in Leaf and Berry tissues over time. ‘-’ indicate untreated samples; ‘+’ indicate *Bc* dsRNA treated samples. ds+plant: *Bc* dsRNA added to an untreated leaf sample used as positive control.

