

**Figure S1**

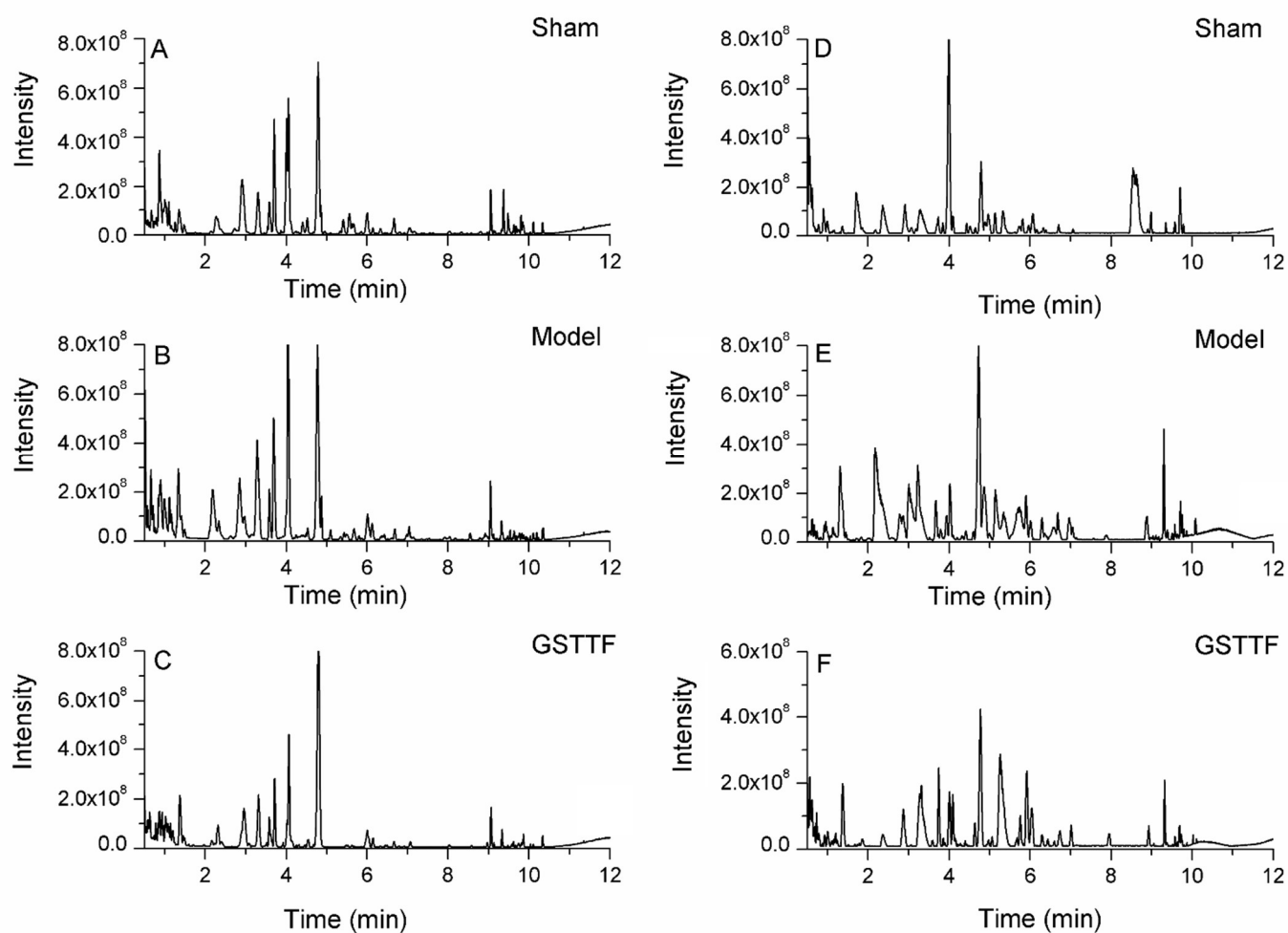


Figure S1 Representative base peak chromatograms of urine samples from different samples acquired in both positive (A-C) and negative ion modes (D-E).

**Figure S2**

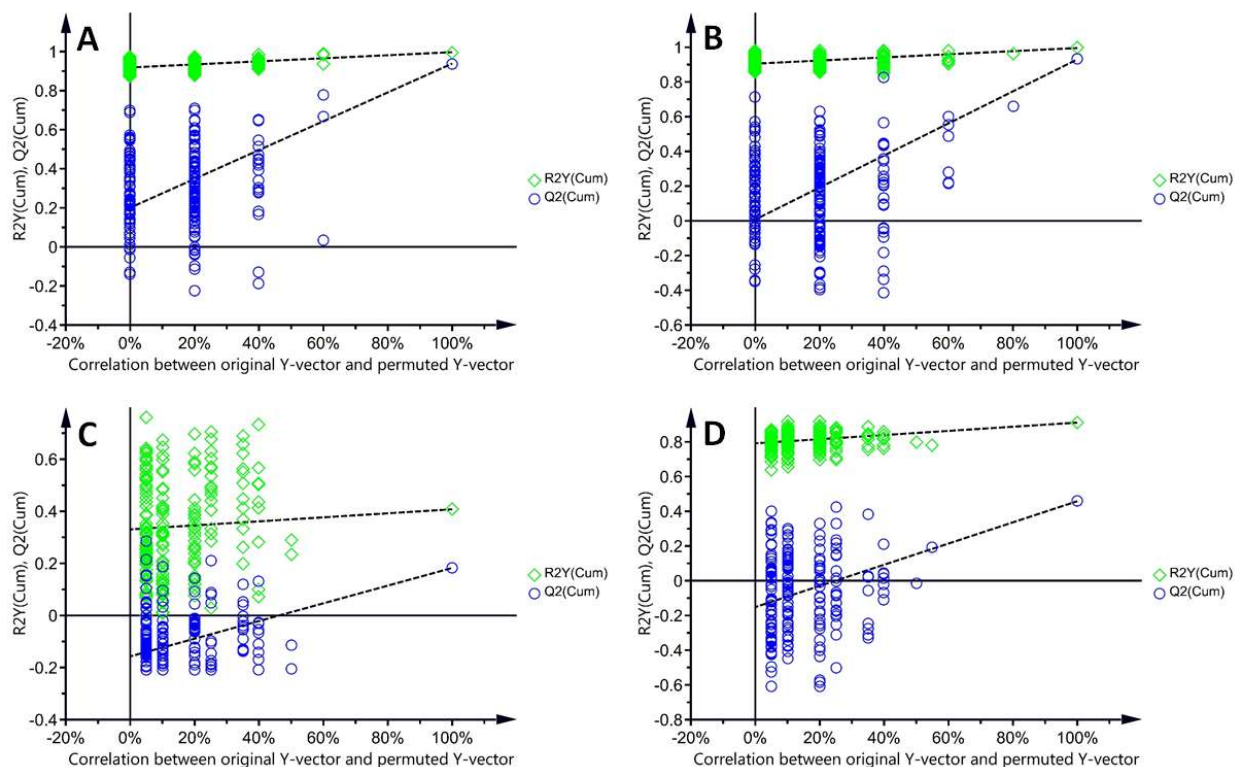


Figure S2 PLS-DA permutation test of Sham and model groups based on the data obtained in positive ion mode (A) and negative ion mode (B); PLS-DA permutation test of Sham, model and GSTTF-treated groups based on the data obtained in positive ion mode (C) and negative ion mode (D).

**Figure S3**

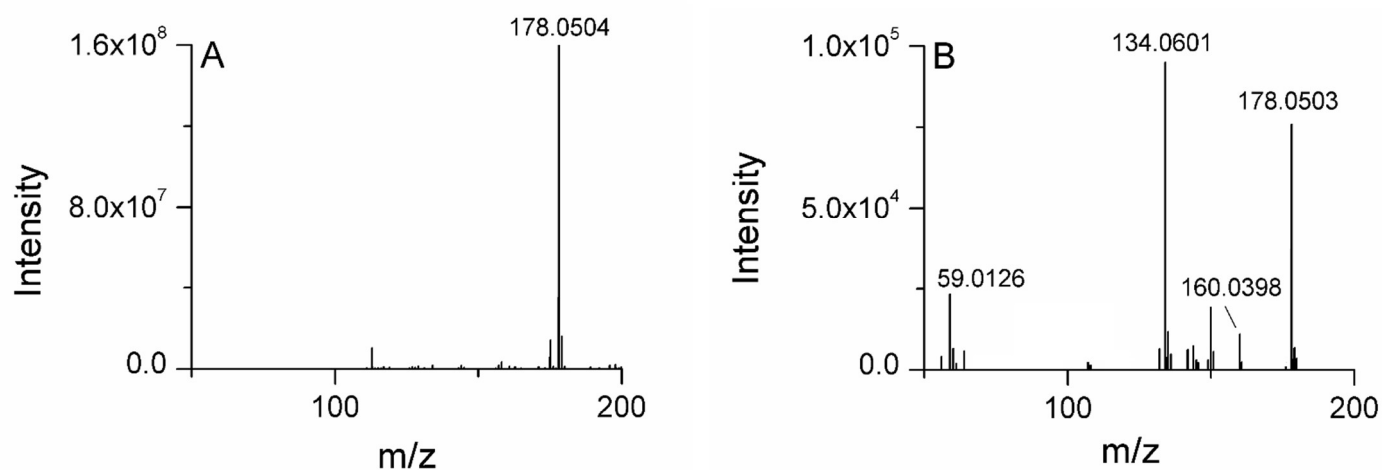


Figure S3 Mass spectra of the hippuric acid ion at RT 3.99\_m/z 178.0502, (A) full scan mass spectrum, (B) tandem mass spectrum.

Figure 4

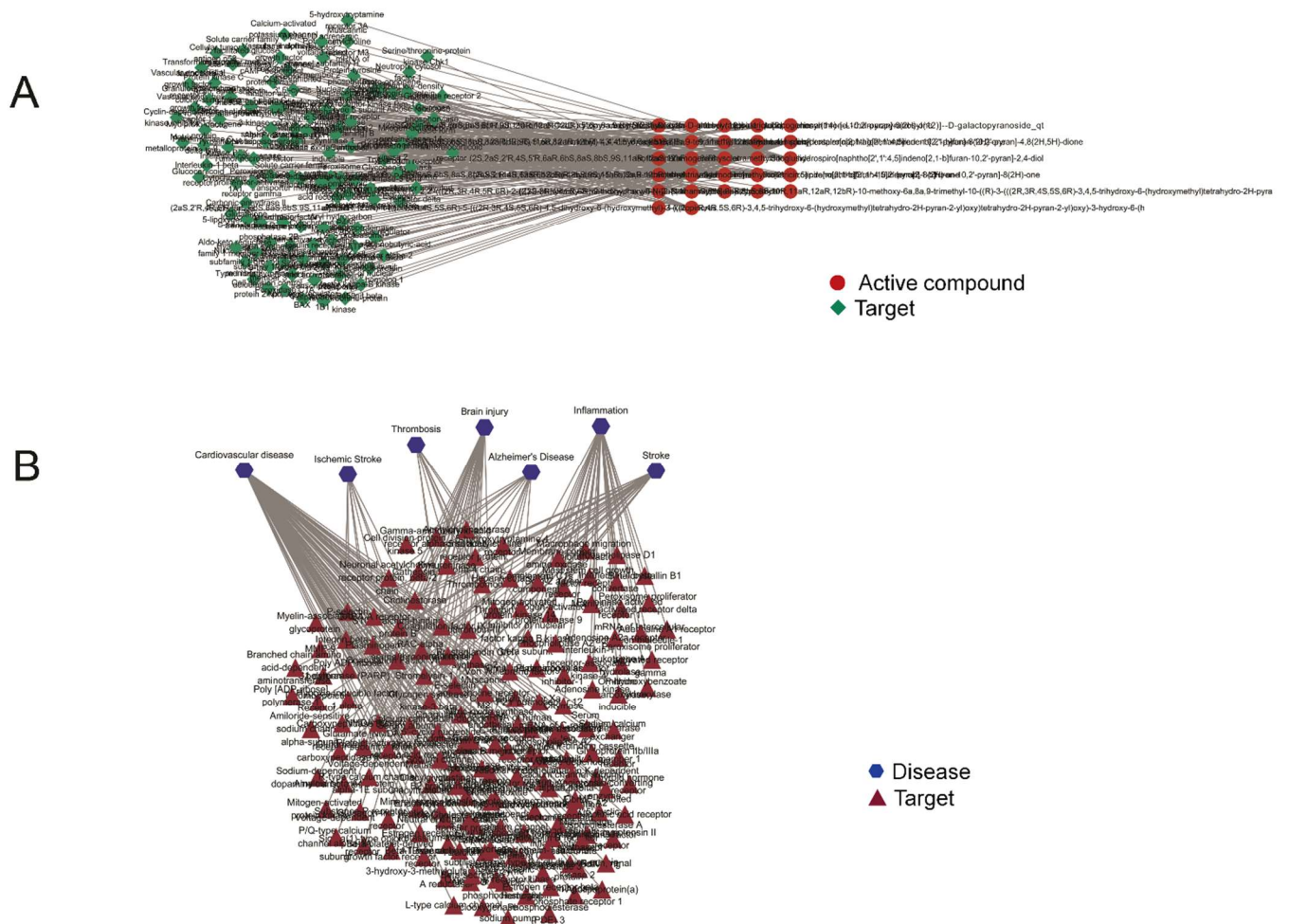


Figure S4 The compound-target network (A) and disease-target network (B).