

Supplementary Data

The following is the Total Ion Chromatogram (TIC) of the different extracts:

RT: 0.00 - 30.00

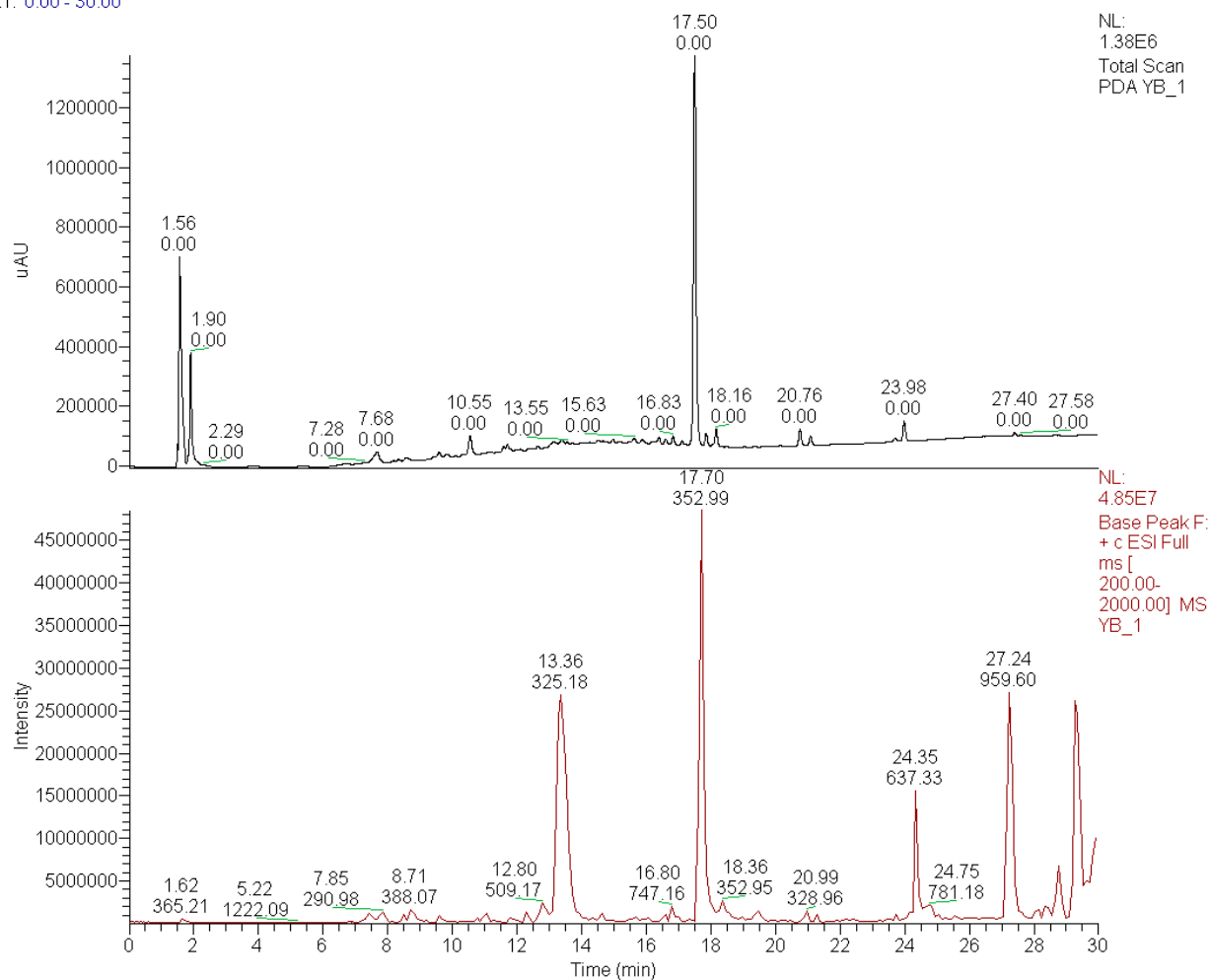


Figure S1. TIC chromatogram for the extract of the callus

RT: 0.00 - 30.05

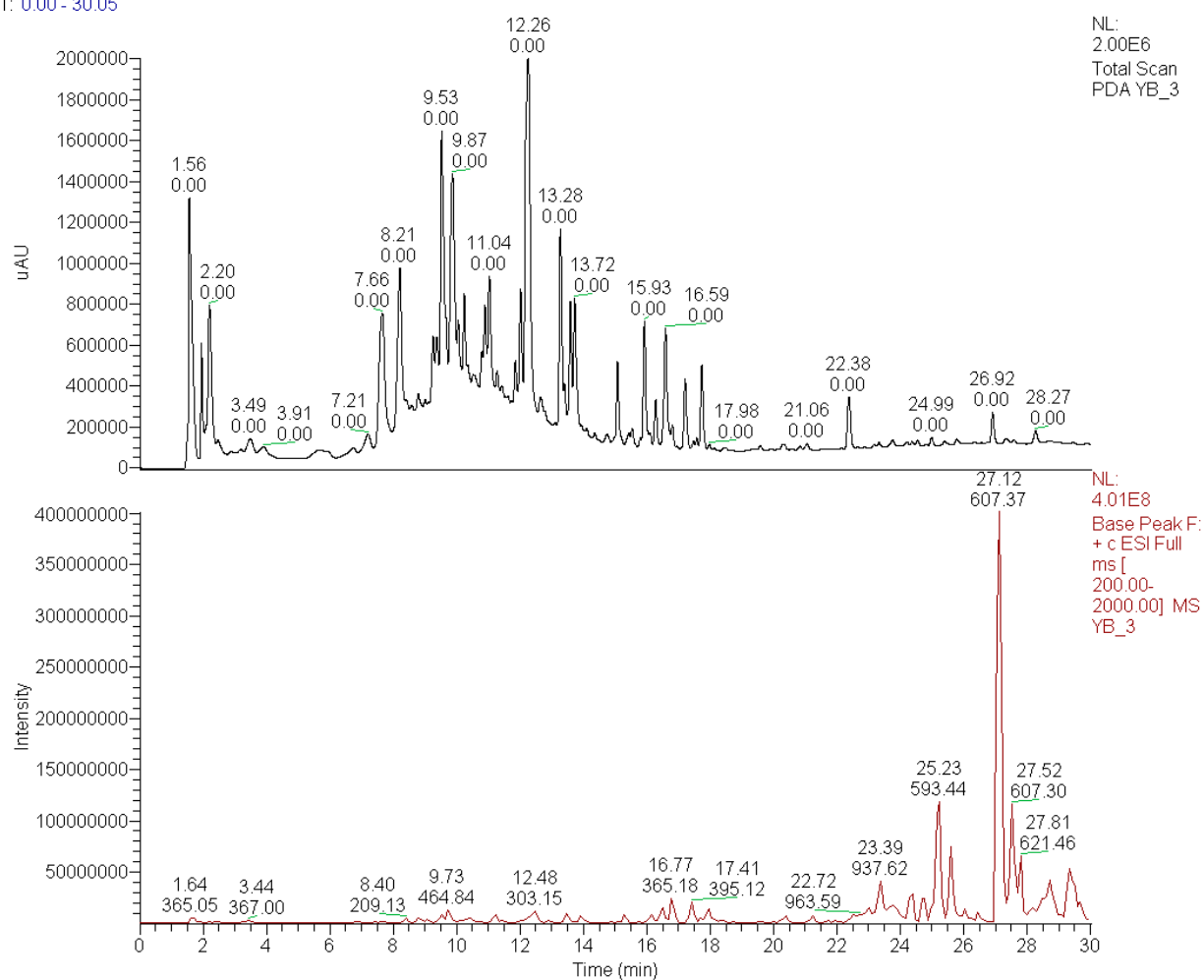


Figure S2. TIC chromatogram for the extract of the cell suspension

RT: 0.00 - 30.02

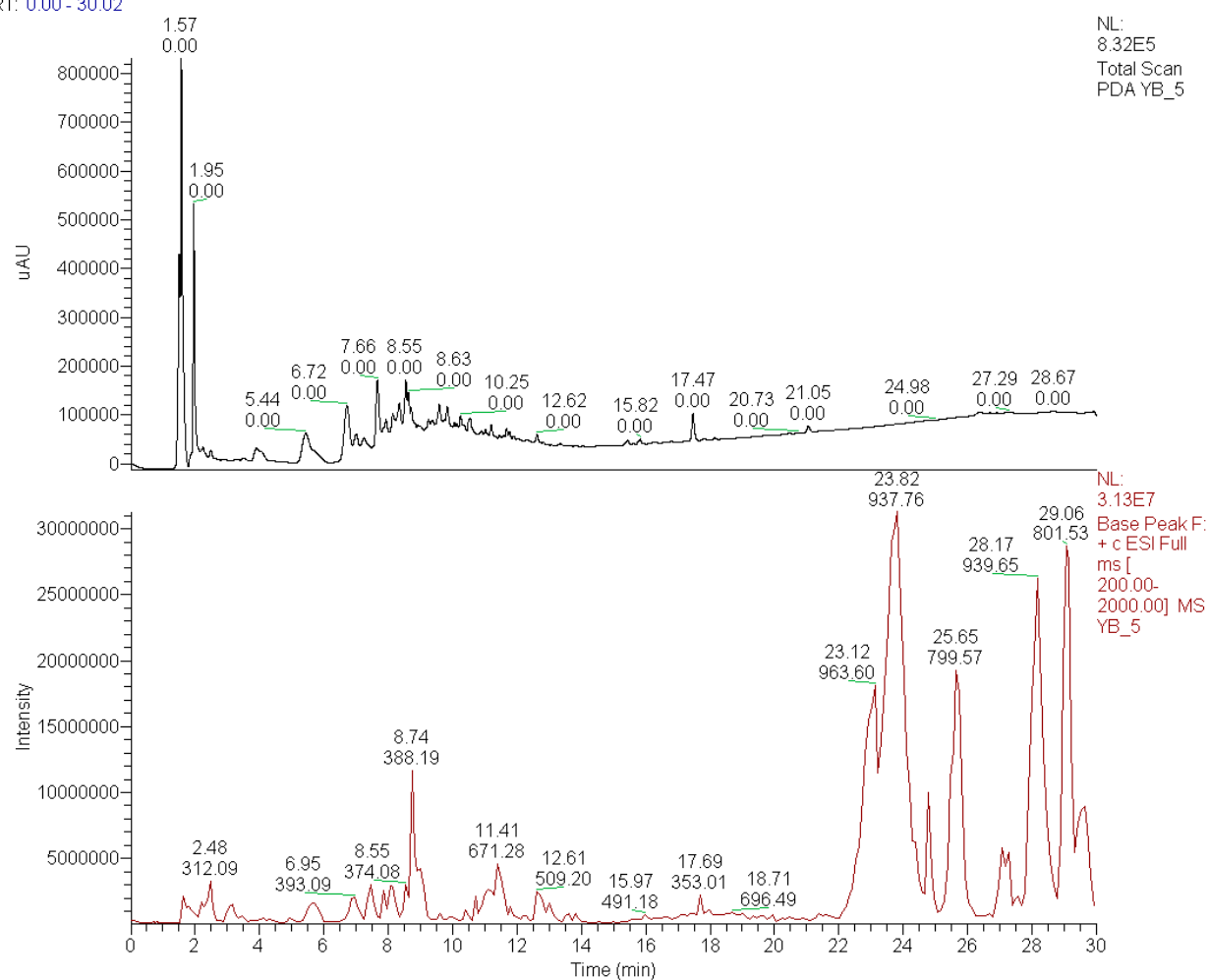


Figure S3. TIC chromatogram for the extract of the leaves

RT: 0.00 - 30.08

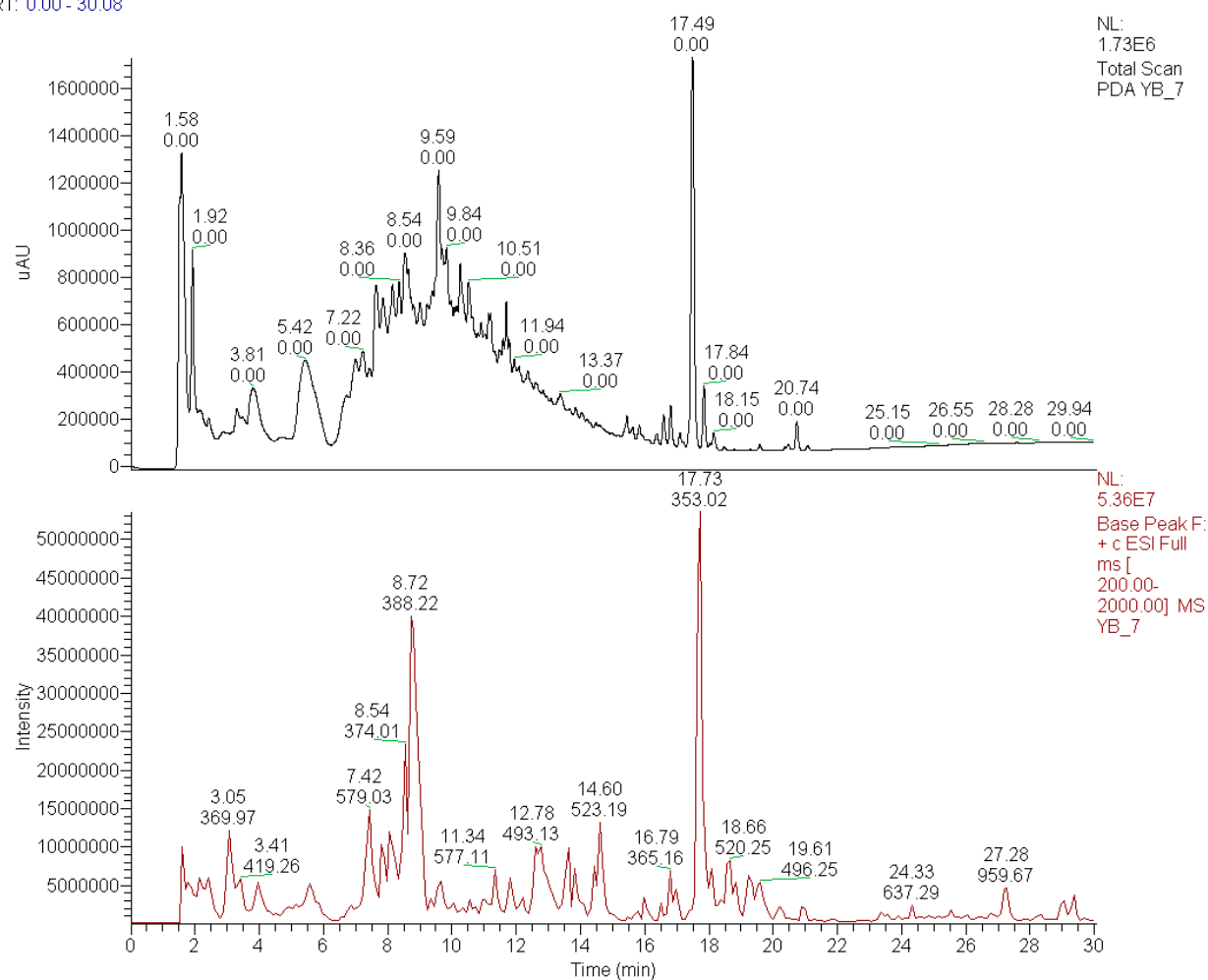


Figure S4. TIC chromatogram for the extract of the seed