

Figure S1. Purity of sorted cells. CD11b⁺GR-1⁺ cells from bone marrow and spleen were sorted using a cytometer. Prior to sorting, CD11b⁺ splenocyte were positively selected using magnetic beads.

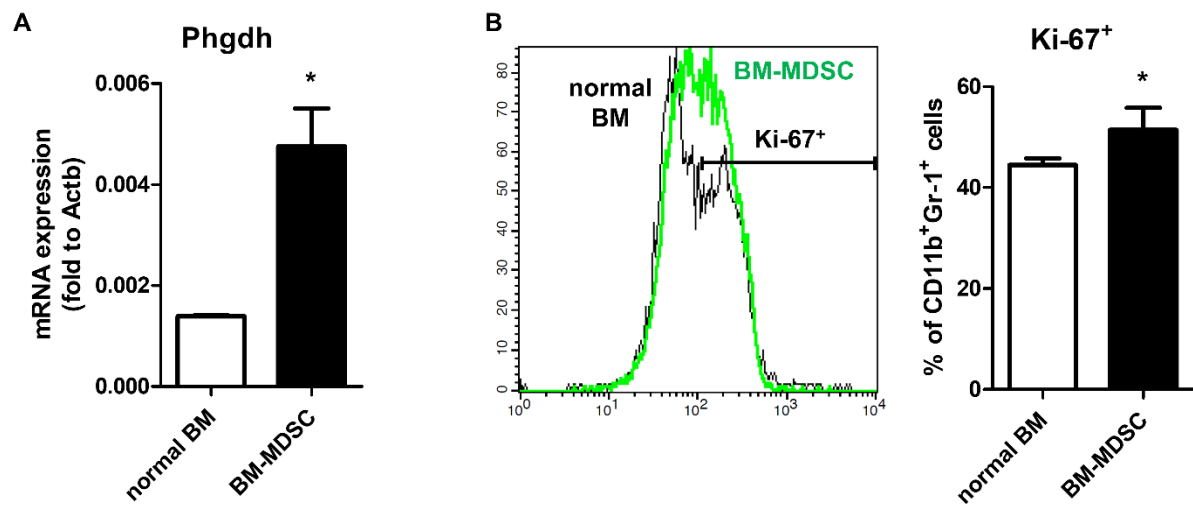


Figure S2. mRNA and protein expression level related to SGOC pathway. Normal BM and BM-MDSC were harvested from normal and tumor-engrafted mice. (A) The *Phgdh* mRNA expression levels were measured by qRT-PCR and normalized by *Actb*. (B) Ki-67 expression levels of CD11b⁺Gr-1⁺ cells were measured by flow cytometer. Data shown are expressed as mean \pm SEM of three replicates with similar results. *, $p < 0.05$. The p values were obtained by Student's t -test.