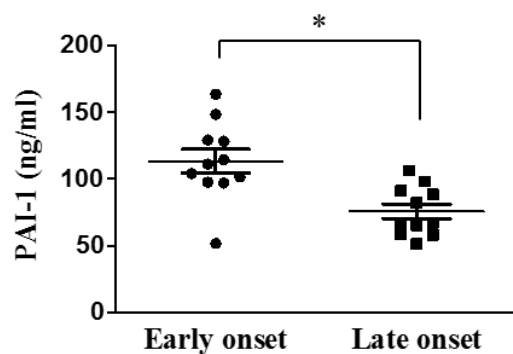
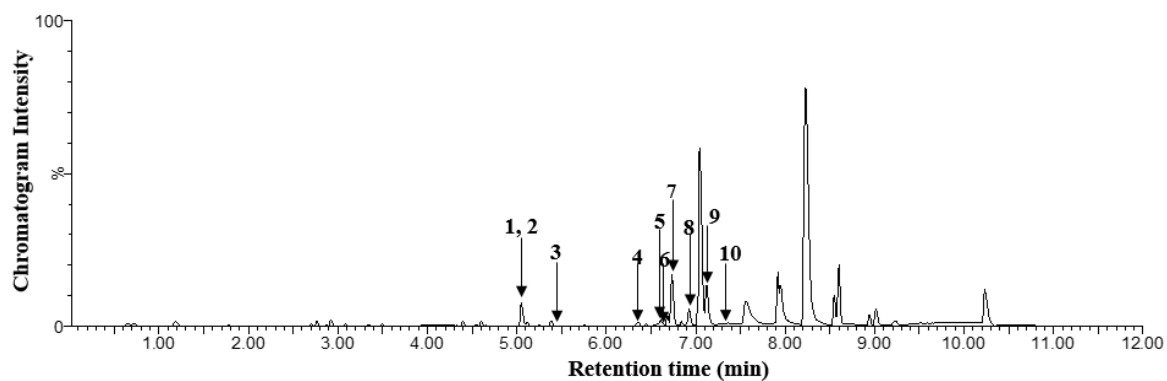


## SUPPLEMENTARY MATERIALS



**Figure S1.** Comparison of PAI-1 concentrations according to age of onset (n=11 in each group, \*p<0.005)



**Figure S2.** Base peak intensity chromatograms of plasma metabolic profiles in a serum sample based on ultra-performance liquid chromatography coupled with quadrupole time-of-flight mass spectrometry analysis. 1, vanillin-iso-butyrate; 2, propylparaben/4-propoxybenzoic acid; 3, acylcarnitine analog/[2-(dioctylamino)-2-oxoethoxy]acetic acid; 4, LPC (20:5); 5, LPC (22:6)+Na; 6, LPE (22:6); 7, LPC (22:5); 8, LPC (22:6); 9, LPE (16:0); 10, LPC (18:0)

**Table S3.** Identification of major metabolites contributing to separation among the sample groups.

No.	RT (min)	Compound	Exact mass (M+H)	MS Fragments	VIP	<i>p</i> -value
1	5.03	vanillinis-iso-butyrate	223.0948	181	1.05	0.001
2	5.04	Propylparaben / 4-propoxybenzoic acid	181.0846	163	1.08	0.002
3	5.45	Acylcarnitine analogue / [2-(Diocetyl amino)-2-oxoethoxy]acetic acid	358.2934	282	1.13	0.001
4	6.34	LPC(20:5)	542.3241	184, 104	1.27	0.000
5	6.59	LPC(22:6)+Na	590.3211	385, 550	0.85	0.013
6	6.62	LPE(22:6)	526.2926	385	0.89	0.008
7	6.74	LPC(22:5)	570.3548	104, 387, 552	0.73	0.042
8	6.89	LPC(22:6)	568.3364	550, 383	0.77	0.036
9	7.08	LPE(16:0)	454.2917	436	0.81	0.027
10	7.31	LPC(18:0)	508.3750	184	0.78	0.030