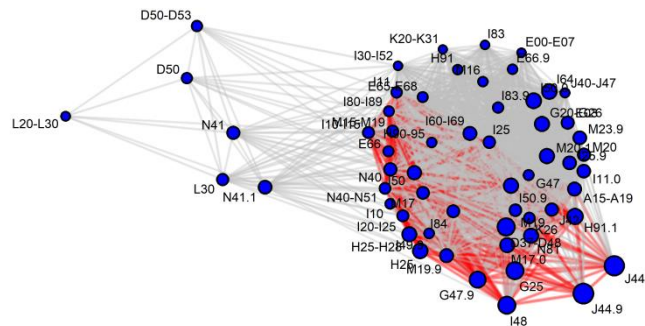
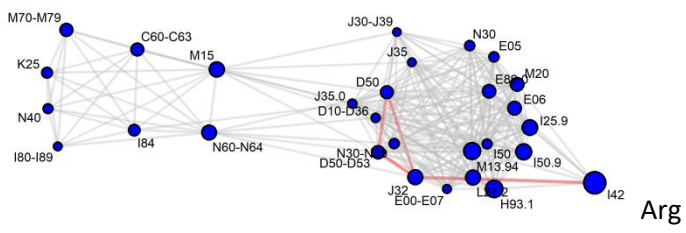


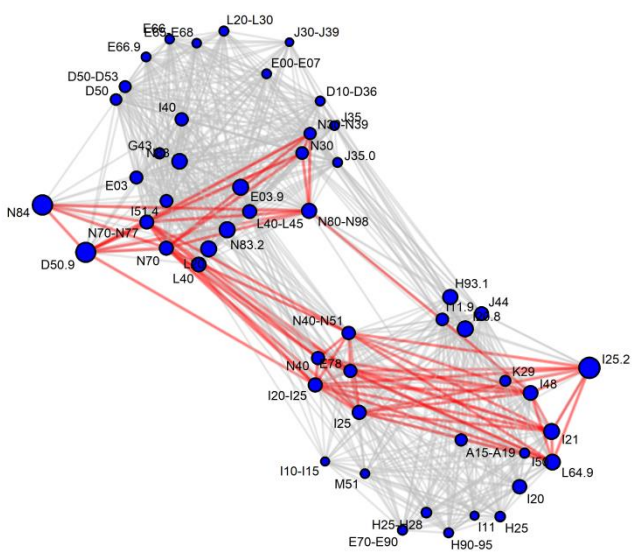
Supplementary Figure S1. Biomarker candidate resistance to disease pooling.

Significance (gray line $p < 0.05$, red line $p < 0.001$) of AUC-ROC value after pairwise pooling of diagnose codes for which the specified metabolite appeared as a potential marker. The size of vertexes depends on the AUC-ROC value for the diagnose code if analyzed independently of comorbidities.

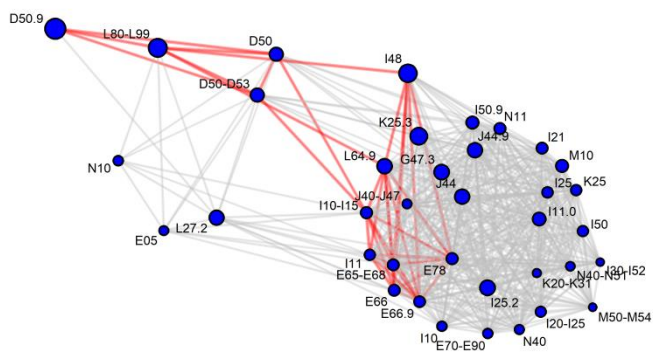




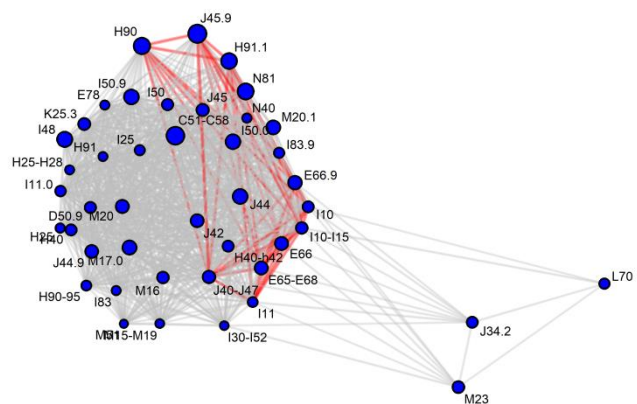
Arg



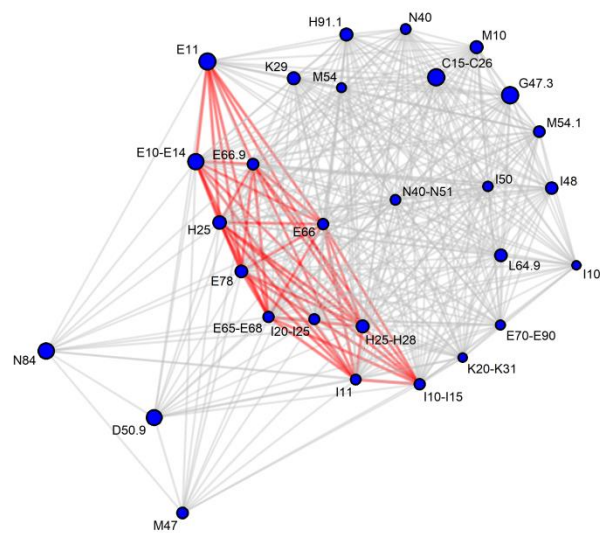
Betaine



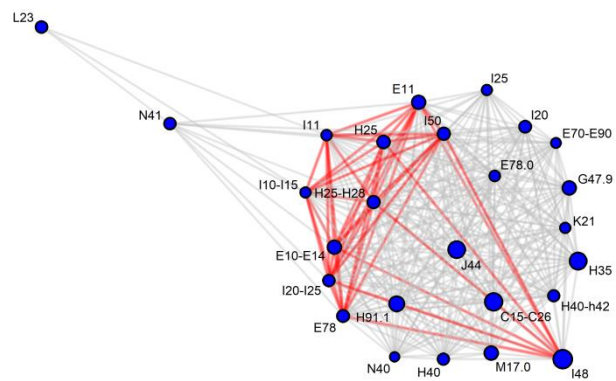
Free carnitine



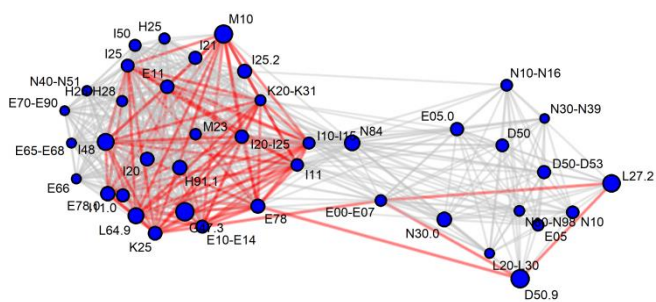
C2 carnitine



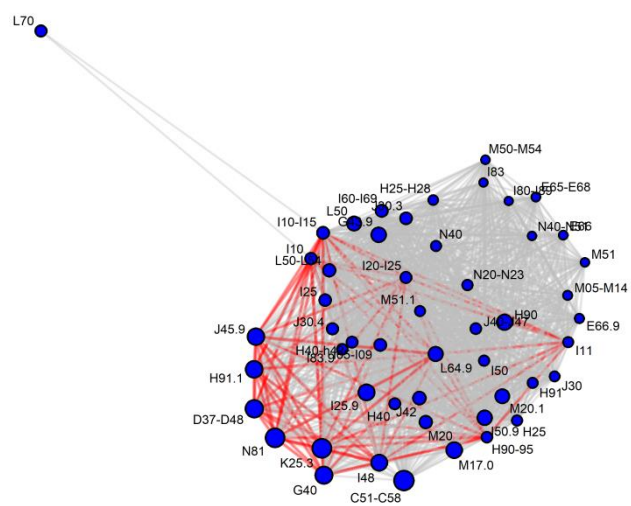
C3 carnitine



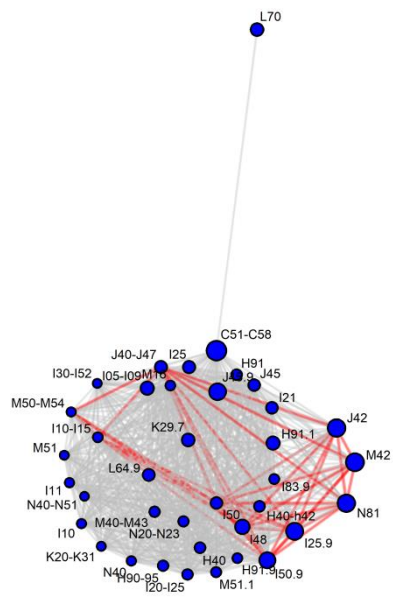
C4 carnitine



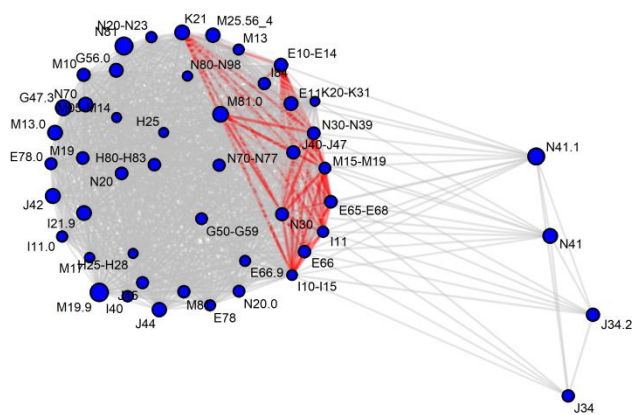
C5 carnitine



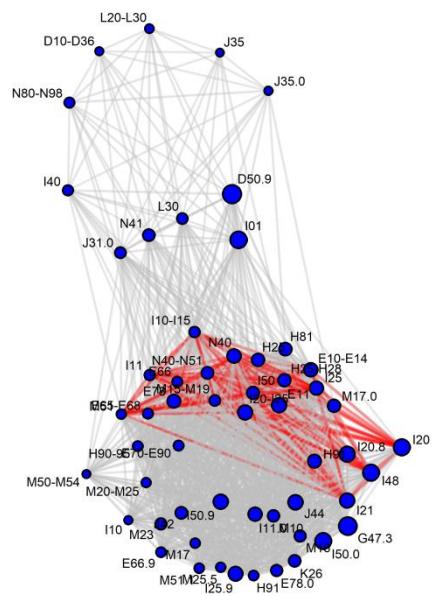
C16 carnitine



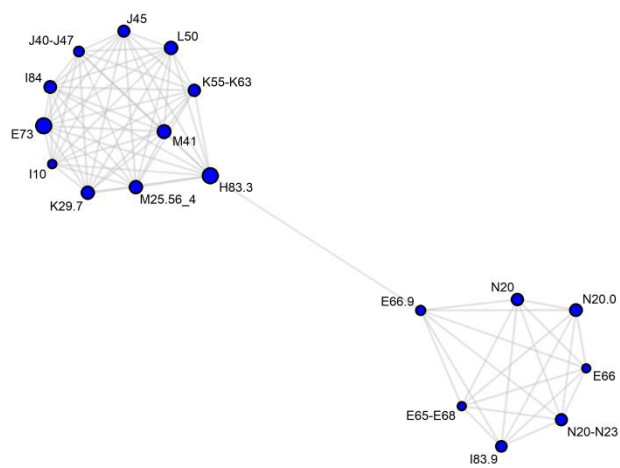
C18 carnitine



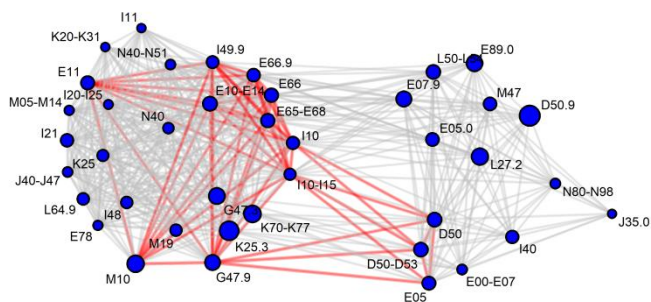
Creatine



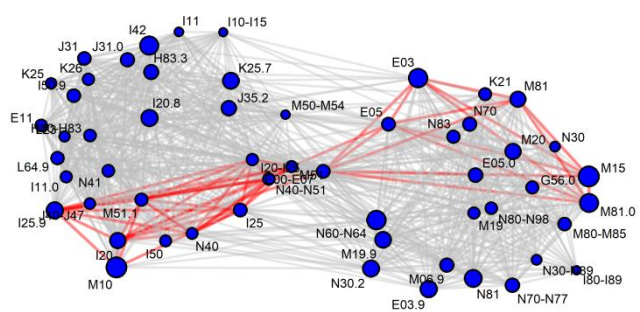
DiMeGly



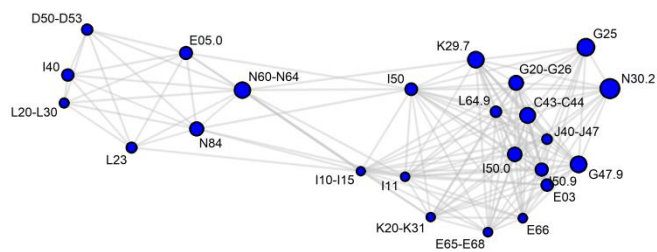
Eicosapentanoic acid



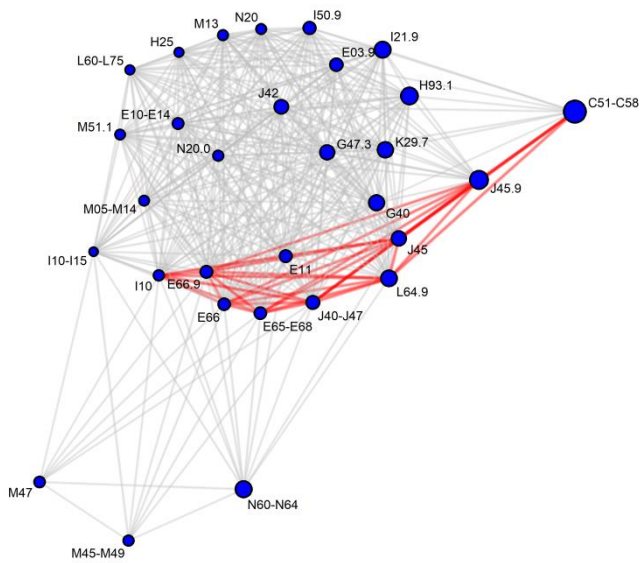
Glu



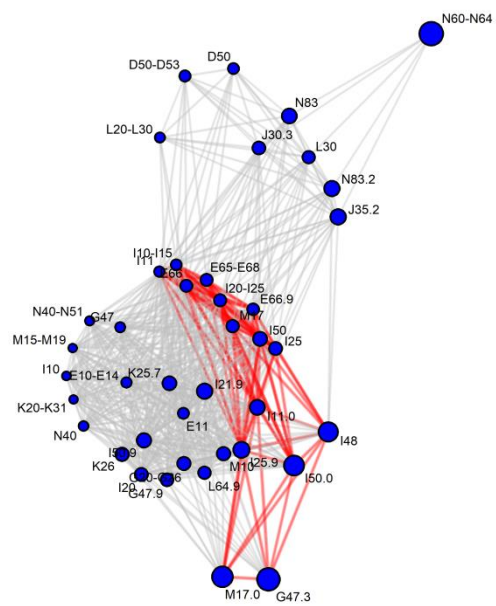
Gly



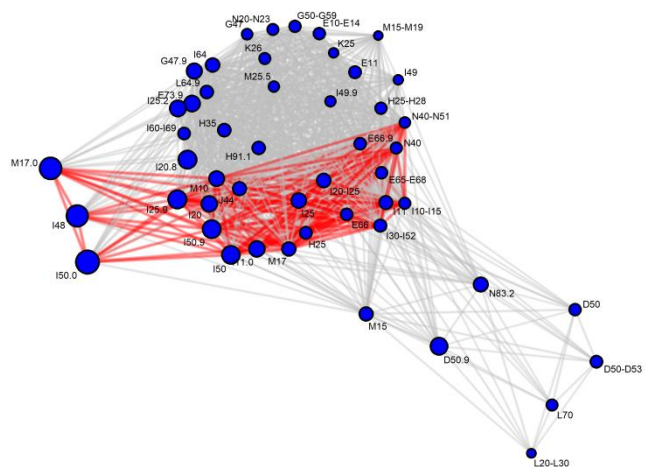
HCys



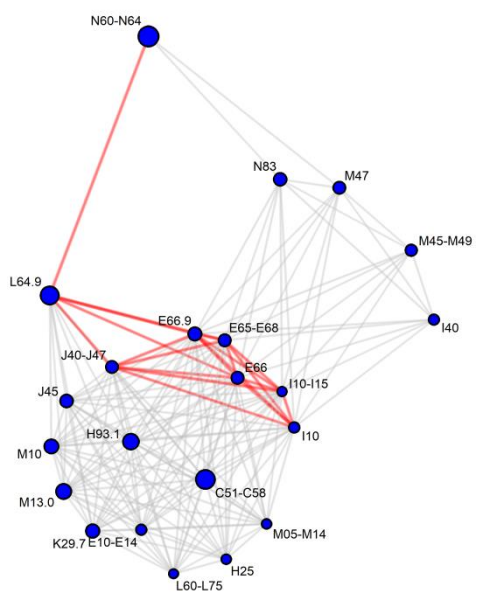
Hexoses



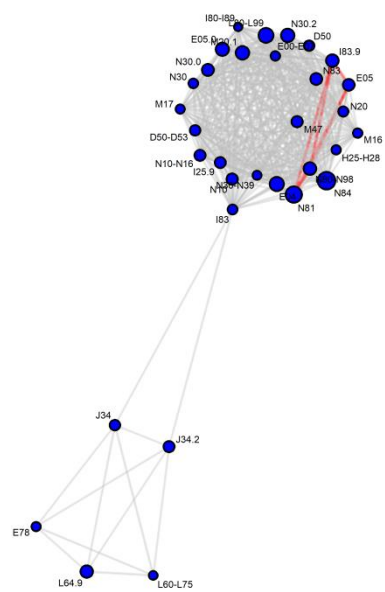
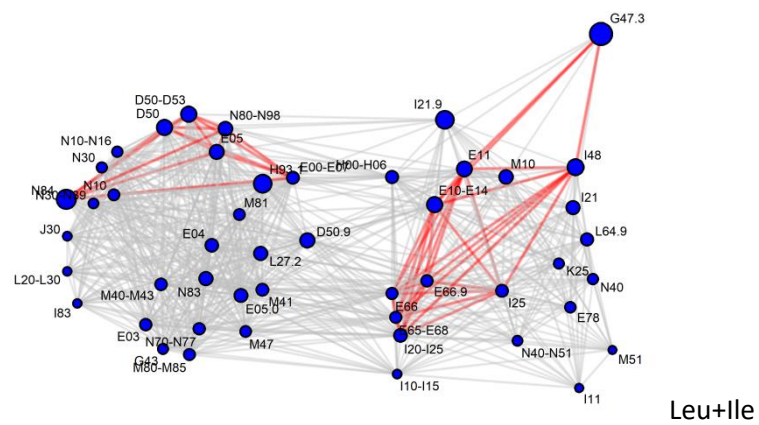
Kynurenic acid

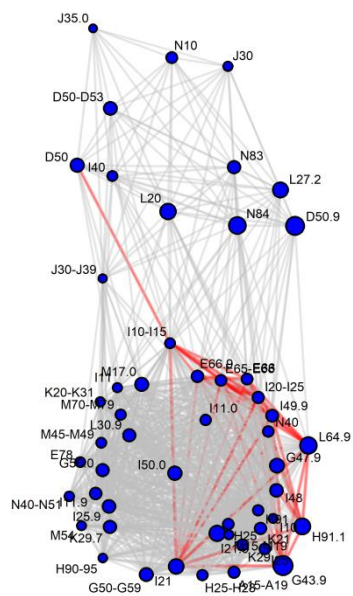


Kynurenin

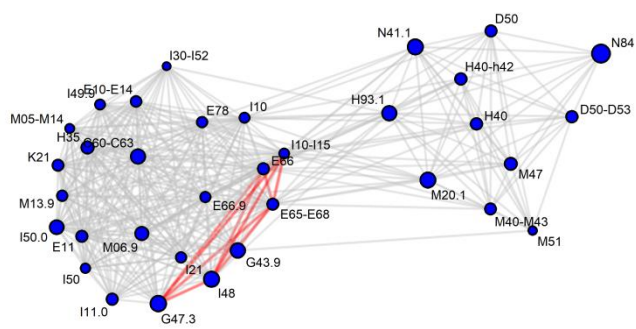


Lactate

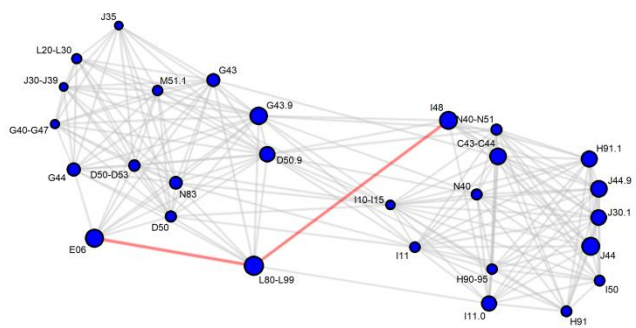




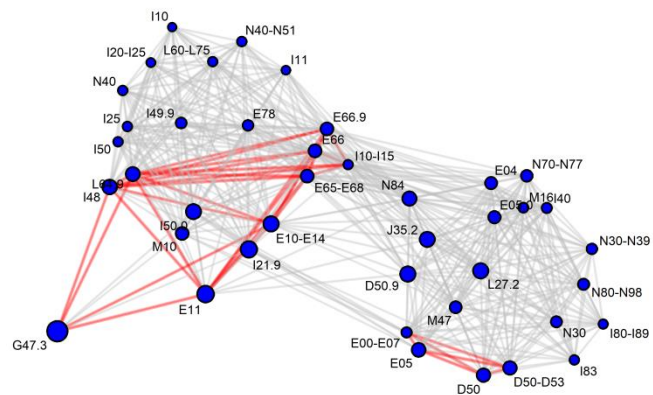
Orn



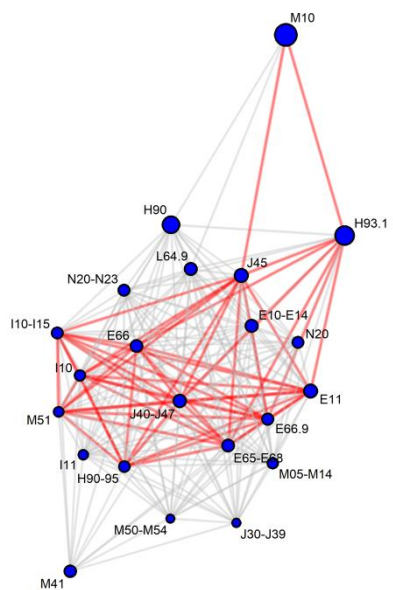
Phe



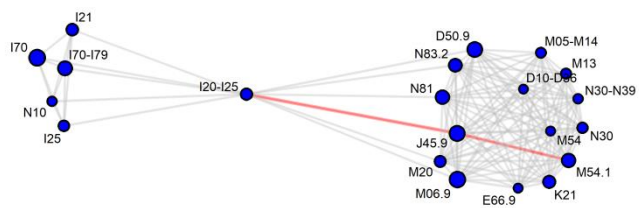
SDMA



Val



2-hydroxybutyrate



LysoPC(C16:0)

