

Article

Circuit Topologies for MOS-Type Gas Sensor

Javier Cervera Gómez ¹, Jose Pelegri-Sebastia ^{2,*} and Rafael Lajara ³

¹ Electronic Engineering Department, Universitat Politècnica de València, 46730 Gandia, Spain; jacergo@teleco.upv.es

² Research Institute for Integrated Coastal Zone Management (IGIC Institute), Universitat Politècnica de València, Campus Gandia, 46730 Gandia, Spain

³ E.T.S.E, University of Valencia, Avda Universitat S/N, 46100 Burjassot, Valencia, Spain; Jose.R.Lajara@uv.es

* Correspondence: jpelegri@upv.es

Received: 27 February 2020; Accepted: 21 March 2020; Published: 23 March 2020



Abstract: Metal Oxide Semiconductor or MOS-type gas sensors are resistive sensors which can detect different reducible or volatile gases in atmospheres with oxygen. These gas sensors have been used in different areas such as food and drink industries or healthcare, among others. In this type of sensor, the resistance value changes when it detects certain types of gases. Due to the electrical characteristics, the sensors need a conditioning circuit to transform and acquire the data. Four different electronic topologies, two different MOS-type gas sensors, and different concentrations of a gas substance are presented and compared in this paper. The study and experimental analysis of the properties of each of the designed topology allows designers to make a choice of the best circuit for a specific application depending on the situation, considering the required power, noise, linearity, and number of sensors to be used. This study will give more freedom of choice, the more adequate electronic conditioning topology for different applications where MOS-type sensors are used, obtaining the best accuracy.

Keywords: electronic nose; sensor arrays; environmental analysis; Anderson loop; Wheatstone bridge

1. Introduction

Metal Oxide Semiconductor or MOS-Type gas sensors are a type of sensors that can detect presence of some volatile, oxidizable or reducible substances in an oxygen environment. In recent years, these sensors have been used in different study areas like healthcare [1,2] or food industry [3], among others. These sensors are resistive sensors whose nominal resistance changes with the presence of different fuels, oxidizing gases or reducing gases [4,5].

This type of sensor has many advantages such as a high response, low cost and portability. Due to these characteristics, different fabrication processes of MOS-Type gas sensors have been studied to improve their sensitivity, power consumption, and response time [6–9]. Other studies have researched into the applications in fields like the Internet of Things (IoT) devices [10] and wearables [11] by using different techniques of power supply, such as triboelectric nano-generator (TENG) [12], and others.

With these types of sensors, a voltage divider [13,14] is often used to measure the substance searched for. But other electronic topologies could be used to power resistive sensors. In this work, besides a voltage divider, the Wheatstone bridge, the Anderson loop, and a resistance-to-frequency converter were designed to be used with different MOS-Type gas sensors and compared among them. The difference of these MOS gas sensors from others resistive sensors (as platinum resistance temperature sensor or thermistors) are: they use a heater in the same sensor (need to work high temperatures), and the range of the variable resistance is higher than others.

In this article, TGS2600 [15] and TGS2610 [16] sensors are used, whose sensing material is tin dioxide (SnO₂), because SnO₂ is a very popular sensing material in this area [17]. In addition, both

sensors have similar heaters onto the reverse side of the substrate, which is made of RuO_2 [15,16]. However, their bases are different: TGS2600 has a Ni-plated steel sensor base [15], whereas TGS2610 sensor base is made of NiCu-plated steel [16]. Moreover, another difference between both sensors is the long-term stability (Figure S1 and S2 in the Supplementary Materials). TGS2610 is very stable but TGS2600 has a worst long-term stability.

2. Materials and Methods

This section deals with the design of different electronic conditioner topologies to maximize the accuracy of MOS-type gas sensor applications. The analysis and simulated results for the different topology are discussed.

The voltage divider and the Wheatstone bridge are the most commonly used topologies for measurement systems based on resistive sensors because they are easy to design and easy to get data from [4].

The Anderson loop is more difficult to design because a current source and an active voltage subtractor are needed, as shown in Figure 1. However, unlike the voltage divider and the Wheatstone bridge, the output signal for this topology changes linearly with the sensor resistance. Furthermore, the Anderson loop can be easily designed for an array of resistive sensors [18–20].

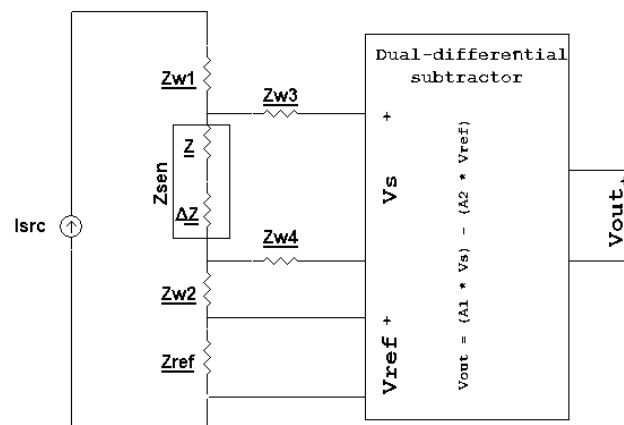


Figure 1. Anderson loop.

The resistance-to-frequency converter is the most complex topology we are going to study in this paper. This topology is based on the use of a simulated capacitance using a Generalized Impedance Converter (GIC). The capacitance changes linearly with the sensor resistance; an oscillator is created using a 555 timer with a frequency that depends on the simulated capacitance [21]. This topology theoretically has a linear dependence between the sensor resistance and the oscillator frequency, like the Anderson loop. But it has several advantages due to the fact of using frequency: it is more immune to noise (but it has a lower Spurious-Free Dynamic Range (SFDR), the transmission distance can be higher, and it could be acquired by digital system without an Analog to Digital Converter (ADC).

The interface to obtain data from these designs is the Red-Pitaya STEMLab 125-14, which has 14-bit ADC, with an input voltage range from -20 V to 20 V . Furthermore, the sample rate is 125 MS/s [22]. Thanks to these characteristics, this acquisition board can be used with all topologies described above (Figure S3 and S4 in the Supplementary Materials).

2.1. Voltage Divider and Wheatstone Bridge

The voltage divider was designed as indicated in the datasheet [15] and [16] for TGS2600 and TGS2610, respectively. Both datasheets indicate that the load resistance of the voltage divider should be greater than $0.45\text{ k}\Omega$. Another important thing to consider when choosing this resistance was the sensor resistance when detect clean air. In this case, this resistance can be from $10\text{ k}\Omega$ to until $100\text{ k}\Omega$,

it is a big range. For this reason, if the load resistance is close to 100 k Ω and the sensor has a sensor resistance with clean air close to 10 k Ω , the output signal change is going to be small when the sensor resistance changes and that made the resolution of the measure will be worst. Consequently, the load resistance should be close to the small values of that range. Finally, the chosen load resistance is 10 k Ω because this is suitable for both sensors when measuring clean air.

The Wheatstone bridge is based on the voltage divider, Figure 2. Unfortunately, with these sensors it is difficult to make a balanced bridge, because although the same model is used, the resistance of two identical sensors can have a high variation. For example, a sensor TGS2600 can have a resistance of 10 k Ω when measuring clean air and another TGS2600 can have 90 k Ω in the same conditions. Due to this reason, the Wheatstone bridge has two 10 k Ω resistors and a 100 k Ω potentiometer, which will be regulated at the beginning of each measurement as a calibration step.

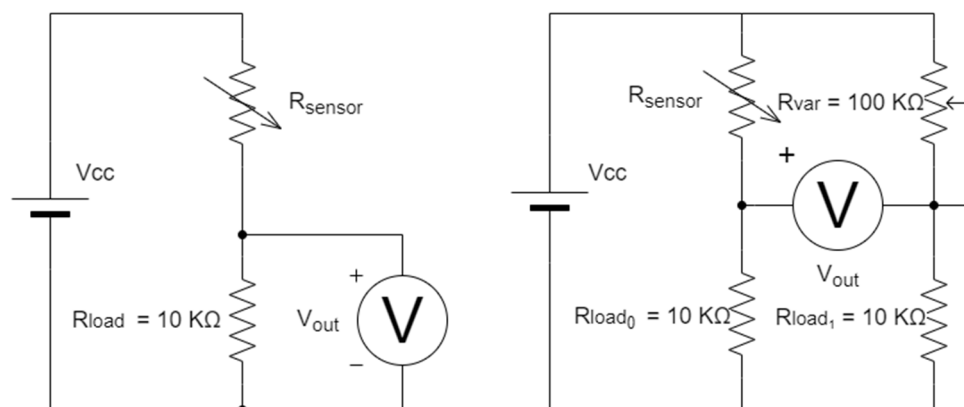


Figure 2. Voltage divider and Wheatstone bridge designs.

2.2. Anderson Loop

The electronic system based on the Anderson loop needs a current source, which is designed taking advantage of the following characteristic of the GIC: the current flowing through R5 resistor in Figure 3 is the same current that flows through R4. And, if all passive components are resistors and the voltage Vcc [23,24].

A current of 0.1 mA is selected for this design because the maximum power supported by the chosen sensors is 15 mW and the maximum resistance of the sensors is around 100 k Ω [13,14].

Once the current source is designed, the next step is to create an active subtractor by using instrumentation amplifiers. In this case, unlike the Anderson loop, the differential voltage of the reference resistance is not subtracted from the differential voltage of the sensor resistance; in this design, the differential voltage of the sensor resistance is subtracted from the differential voltage of the reference resistors, as Figure 4 shows. For this reason, the sensors have maximum resistance when measuring clean air, and in this way, a negative voltage is not needed [25]. The R3 value must have a high value to assure good efficiency between the upper operational amplifier output current and the current source [24], with that, we selected R3 with a resistance value of 47 k Ω , this is because is close to the maximum value of the resistance sensor. In the other hand, R1 and R2 have been modified to achieve, in the lower values of the range, a properly behavior of the GIC, and these values are 3.3 k Ω to both. Finally, it is only necessary to create a non-inverter amplifier with a gain between 1 to 4.5, which is controlled by a potentiometer in the position of R9 in the circuit, and the resistance selected is R8 = 1 k Ω and the potentiometer R9 = 3.5 k Ω .

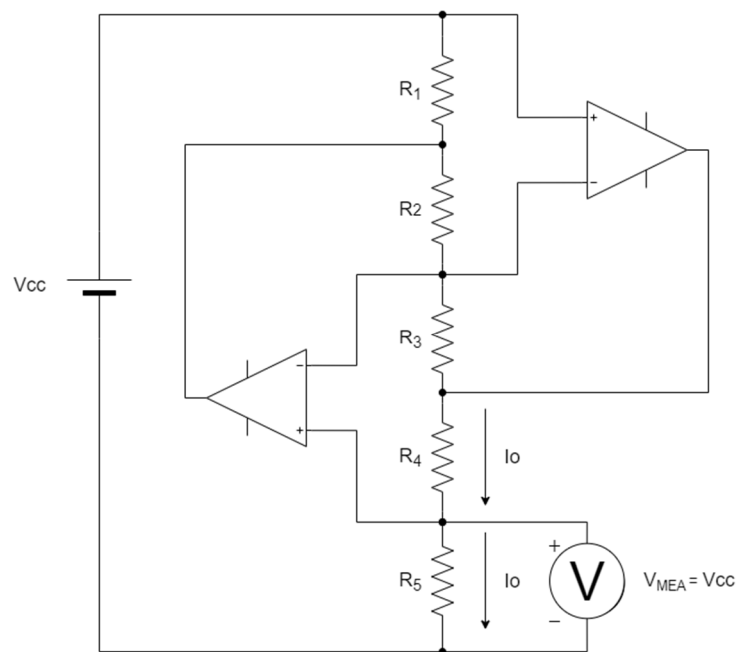


Figure 3. Generalized Impedance Converter.

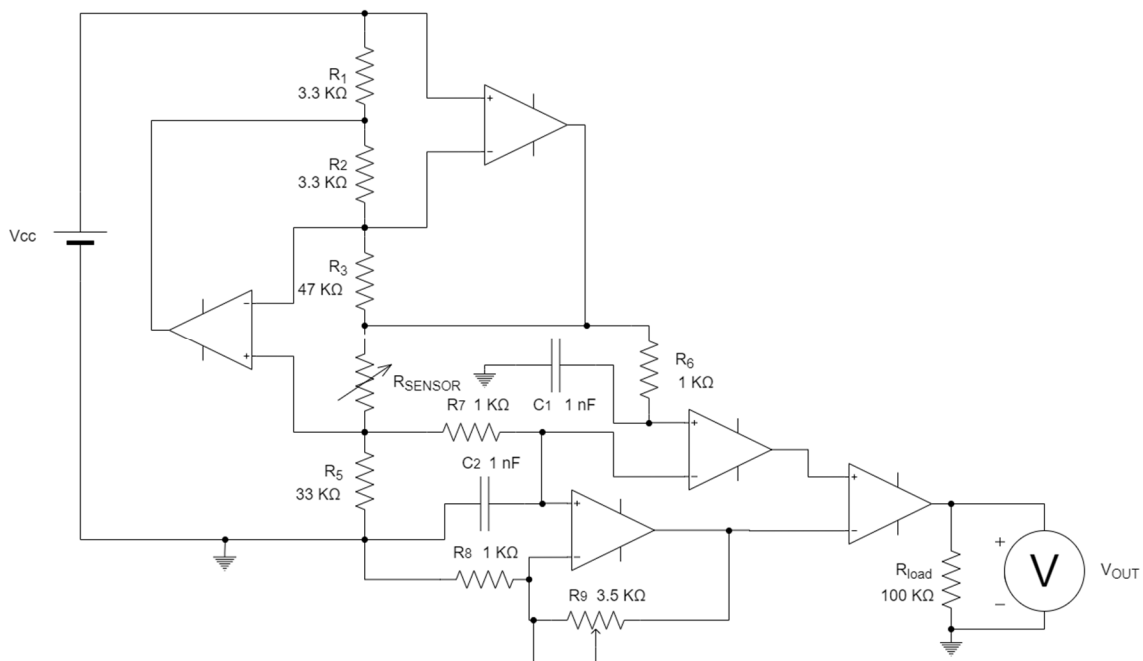


Figure 4. Electronic system based on the Anderson loop.

2.3. Converter Resistance-to-Frequency

The last topology was proposed in [21], and it is based on the simulation of a capacitance using the Generalize Impedance Converter. In addition, a 555 timer is used in a stable mode to obtain a signal whose frequency changes linearly with the sensor resistance [26].

In [21], the sensor resistance range is between 500 Ω and 30 k Ω , but the range is wider in in this proposal, from 500 Ω to 100 k Ω . Due to this, some changes in the topology were introduced. On one hand, the capacitor C3 of the Figure 5 changes its place for the resistance R5, and to grow their values until 33 nF and 15 k Ω ; this change does not affect to the theoretical behavior of the GIC [27], but the maximum voltage drop is only 3 V in the worst case. On the other hand, our design has higher voltages

than the voltages used in the original paper; this is due to two reasons: the first reason is that the change in the resistance range of the sensor increases the voltage needed; and the second reason is that in [21] a microcontroller PSoC was used simulating a timer 555, with power voltage level of 3.3 V, whereas in our design a 555 timer integrated circuit [26] is used with a minimum power voltage of 5 V.

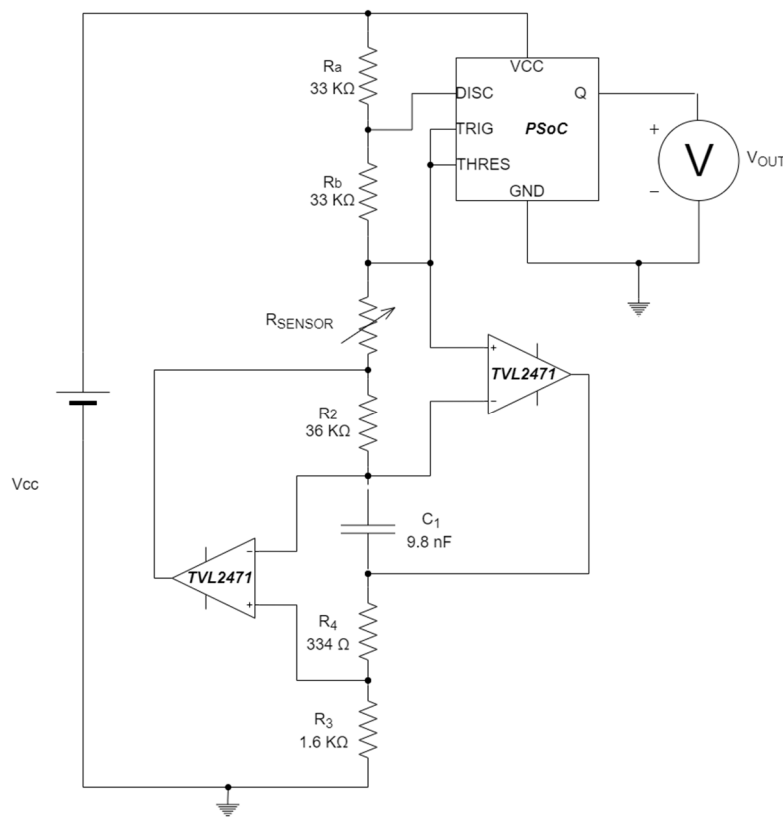


Figure 5. Design of the paper in which is based the design of the converter resistance-to-frequency [21].

There was a calibration process when 30 resistors with different values were selected. Then, the different circuits were activated with these resistors and 5 V in order to make them stable in terms of temperature. A 4-wires measure was taken for each resistor and each circuit. With these data, the output characteristic (voltage or frequency) vs. R_{sensor} can be compared with the theoretical value.

If we consider the resistance-to-frequency circuit in Figure 6, the output frequency vs. capacitance is shown in Figure 7, where we can see that the output frequency does not change linearly with the sensor resistance along a wide range, but it still can be used taking into account this particularity. In the range of the sensor resistance, from $500\ \Omega$ ($C_{\text{GIC}} \approx 52.89\text{ nF}$) to $40\text{ k}\Omega$ ($C_{\text{GIC}} \approx 0.657\text{ nF}$), frequency changes linearly with the sensor resistance, but if the resistance is bigger than $40\text{ k}\Omega$ this behavior changes. Moreover, it shows that, when the capacitance simulated by the GIC is lower than 0.65 nF and the sensor resistance is smaller than $40\text{ k}\Omega$, the change of the frequency regards the change of the capacitance simulated by the GIC has an hyperbolic function, and given that $C_{\text{GIC}} = 0.394417 / (R_{\text{sensor}} * 15000)$, Figure 7 confirms the behavior of the output frequency explained above.

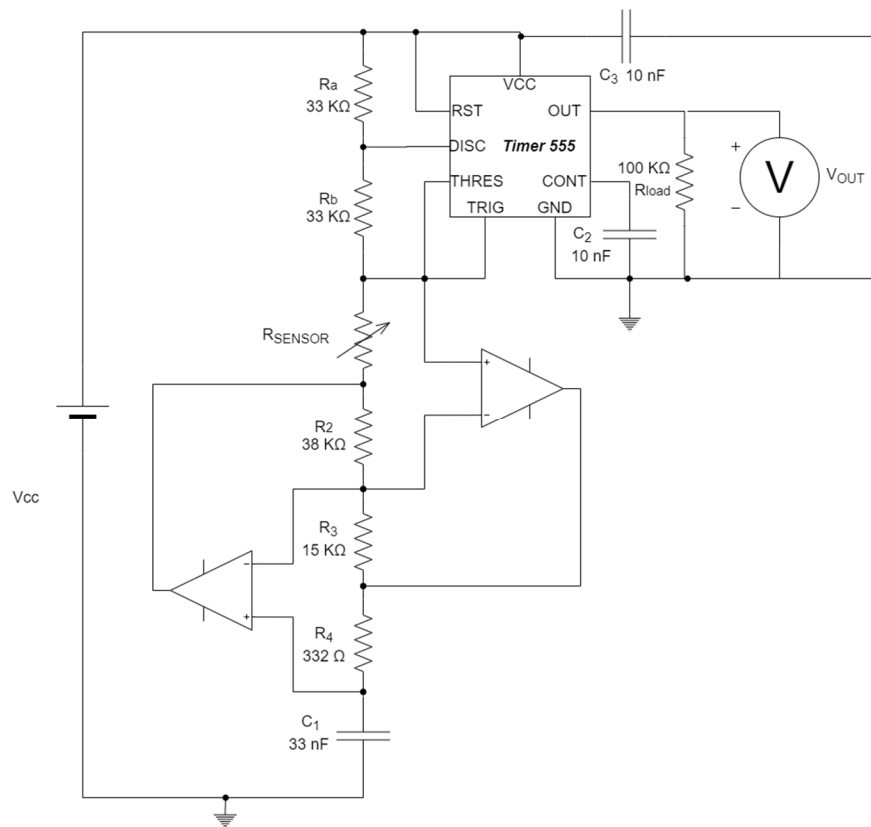


Figure 6. Final circuit of the converter resistance-to-frequency design.

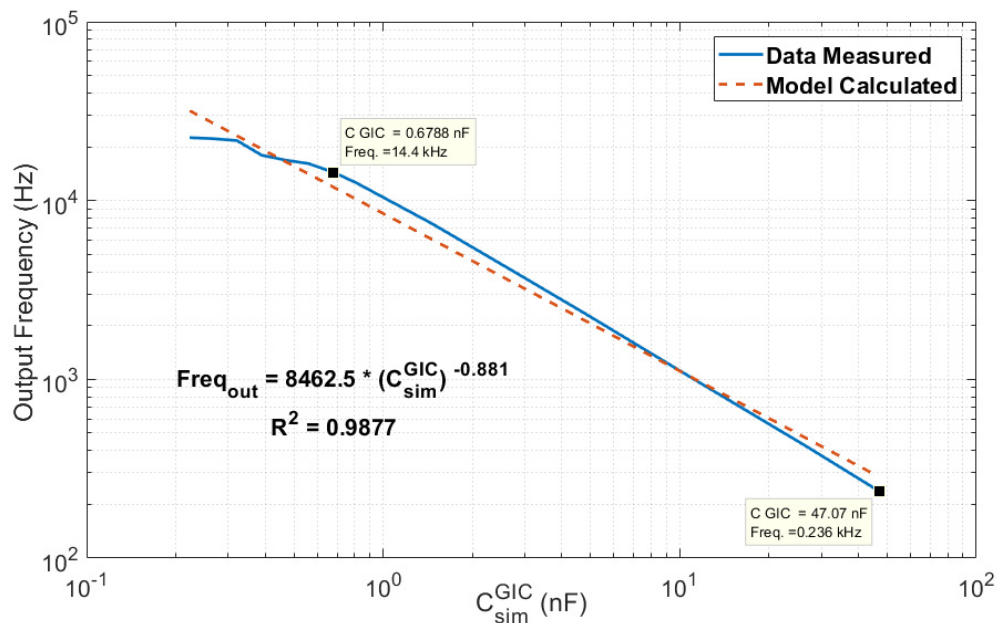


Figure 7. Capacitance simulated by Generalized Impedance Converter (GIC) versus frequency of the output signal of the design.

2.4. Methods

The output voltage was measured using a Red-Pitaya STEMLab 125-14 [22] board, whose operative system and Field Programmable Gate Array (FPGA) program were modified to use it as a data acquisition card using the project made by Nils Roos [28]. The board sends all data through a TCP-IP

connection, to a computer that saves all data in a file using a LabVIEW program. The experimental setup of electronics is shown in Figure 8 and the frontal panel is shown in Figure 9.

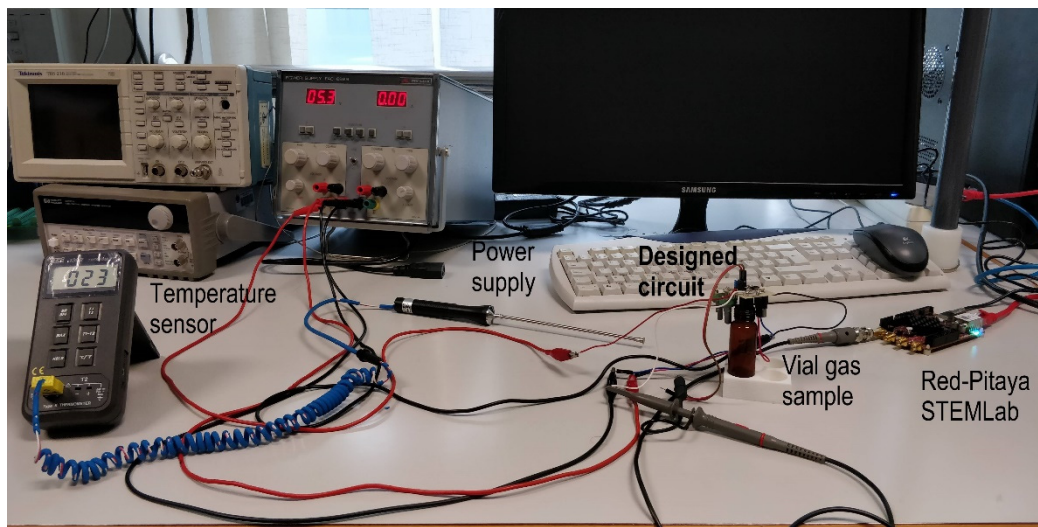


Figure 8. Experimental setup including the Red-Pitaya, the designed circuit with the vial including the gas sampling.

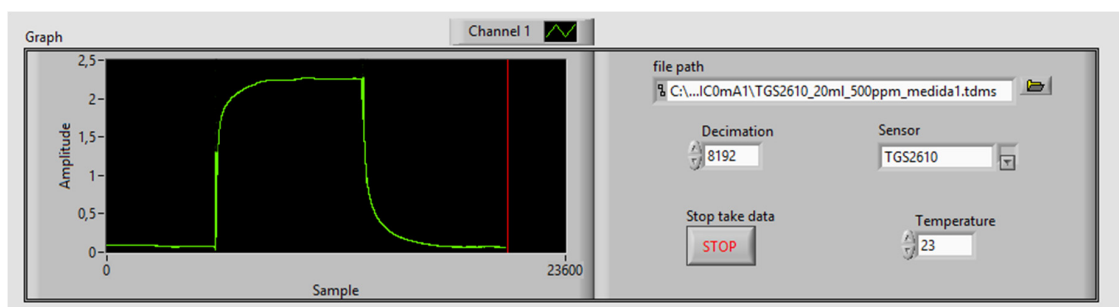


Figure 9. Graphical user interface of the LabVIEW program used to store measures.

The substance to be detected was absolute ethanol of Scharlau, whose density is 0.79 g/cm^3 in water, and dissolutions with different concentrations were applied; from 500 ppm to 6000 ppm. Each sample contained 2 cm^3 of one dissolution in a vial, where the sensor was placed. All the measures were taken at temperatures from 296 to 297 °K. This temperature was measured using a thermocouple type K and a digital thermometer TES-1302.

Typical curves obtained in the acquisition system are shown in Figure 10 for illustrative purposes; in this case, the condition circuit was the voltage divider, and the sensor was the TGS2600, with different concentrations of ethanol.

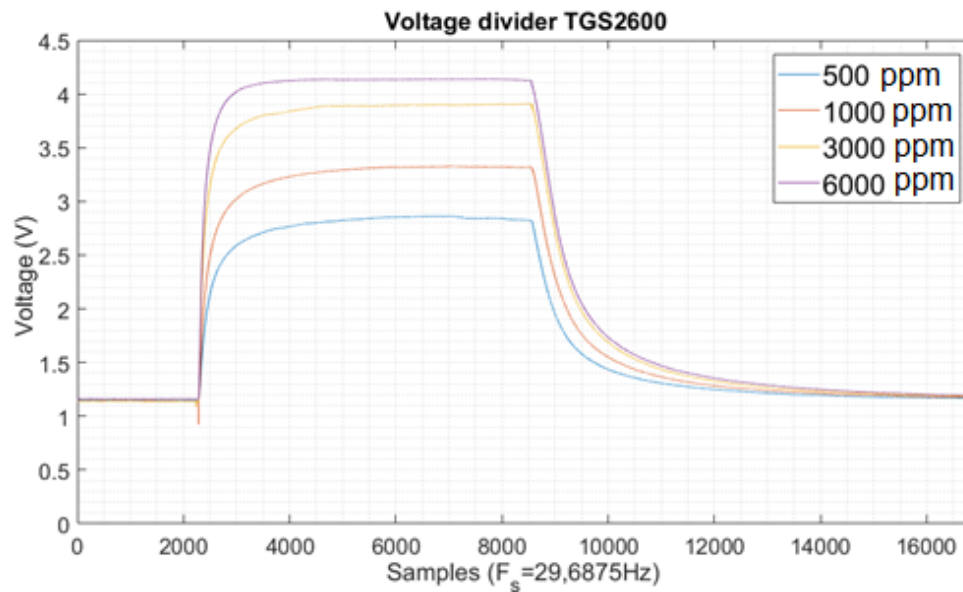


Figure 10. Voltage output for the voltage divider design with the sensor TGS2600.

Measures were taken following this procedure (Figure S5 in the Supplementary Materials): firstly, a measure of clean air is obtained to take a voltage reference. Secondly, the dissolution sample is measured, in this step two characteristics of the measure were considered: the rising edge of the voltage, and the voltage value when it is stable. The last step is to measure clean air again. All sensors had been working previously at least 24 h because they need to be warmed up before being used.

One of the characteristics measured in the voltage divider, Wheatstone bridge and Anderson loop designs was the slew rate when the sensor starts to measure the sample. The voltage rise transition is approximated to two lines, whose slopes are calculated as follow: the first one from $t = 0$ and instant when voltage is 60% of the stable value; and the second one from 60% to 90%, as shown in Figure 11.

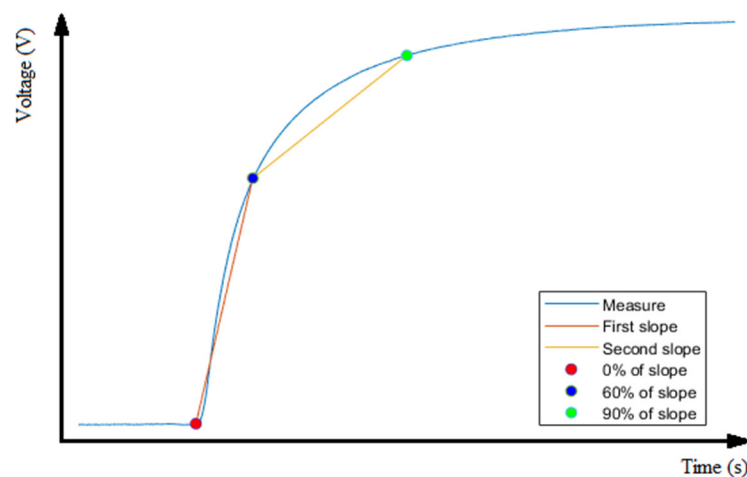


Figure 11. How slopes are measured.

The characteristic measured in the resistance-to-frequency converter design is the main frequency of the output signal. For this reason, a Fast Fourier Transform (FFT) of the data was calculated to obtain the main frequency component. The steps followed for these measures are the same as explained previously (Figure S5 in the Supplementary Materials).

3. Results

Figure 12 shows the values when the sensor is stable with the TGS 2600. Although all measures are in the same graph, the resistance-to-frequency converter design uses the right vertical scale (output signal frequency) whereas the other three plots use the vertical left scale (output voltage).

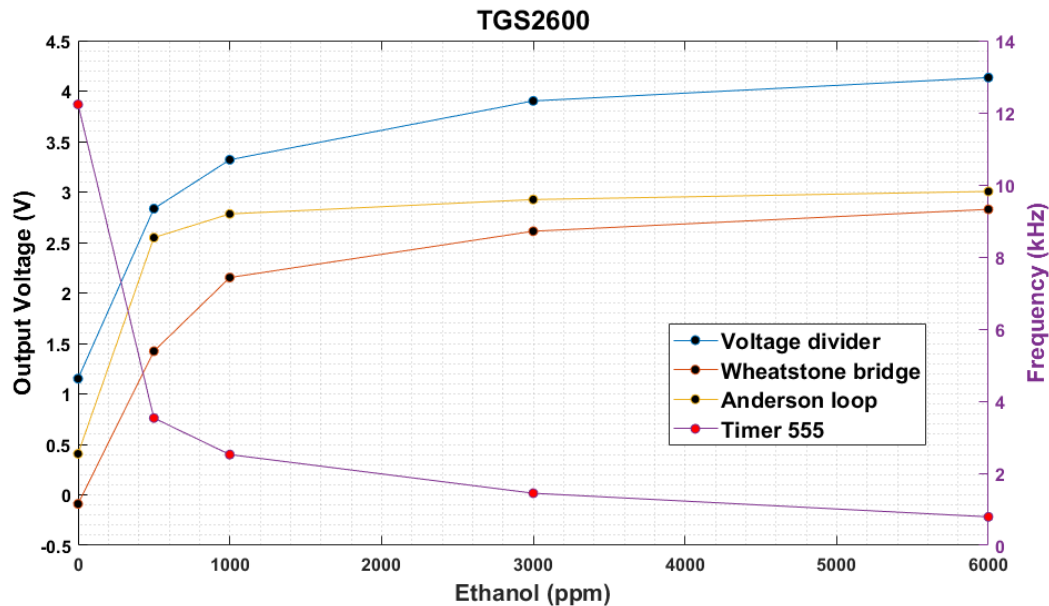


Figure 12. Values measured for all designs using the TGS2600 with different dissolutions.

Figure 12 confirms that all designs can be used to measure different concentrations of ethanol in the air, but there are other characteristics to consider, such as the signal noise. This characteristic is measured when the voltage output is stable. In case of the voltage divider and the Anderson loop, the noise is considered as the floor noise of the ADC, but in the Wheatstone bridge the noise is greater than in the others.

Another characteristic of the output signal from the voltage divider, Wheatstone bridge, and Anderson loop designs is the rising edge modeled as two lines, as explained previously. Figures 13 and 14 proves that the value of the first slope can be used to know the ethanol concentration in the air in the three designs. The second slope can only be used for the voltage divider and for Wheatstone bridge designs, but not for the others because of the lack of monotonicity.

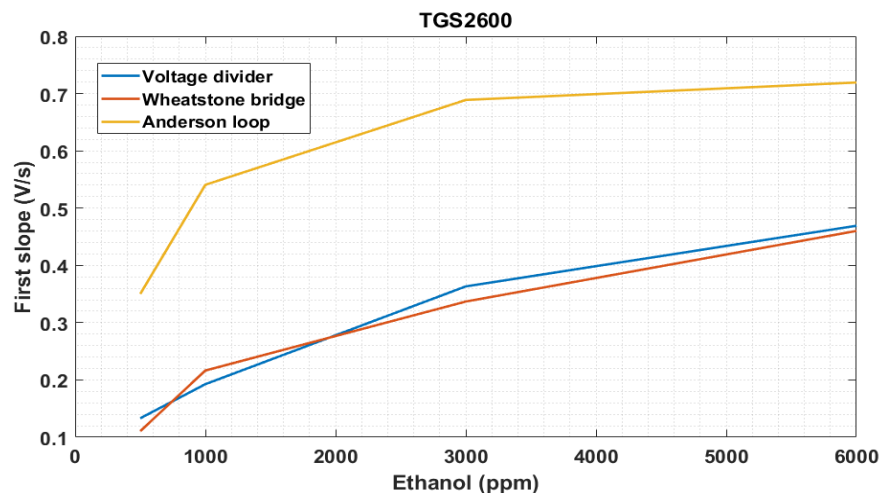


Figure 13. Value of first slope measured with the TGS 2600 in the rising edge.

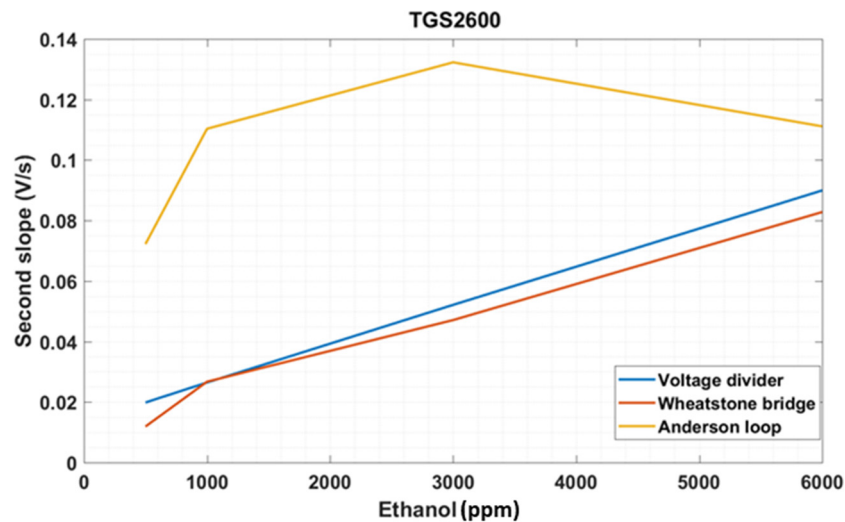


Figure 14. Value of second slope measured with the TGS 2600 in the rising edge.

The last characteristic considered is the power consumption of each design. The power consumed by the Wheatstone bridge and voltage divider is very small and similar in our circuits because of our experimental setup: both designs share components in the same Printed Circuit Board (PCB). Moreover, it had the lowest power consumption of all the designs, 2.28 mW maximum by voltage divider and 4.56 mW maximum by Wheatstone bridge. Others designs have active electronics, and this increases the power consumption. In the Anderson loop, the current source, this design has the higher power consumption (114.91 mW at most), but it allows to use the same current for some sensors in array configuration, Table 1. The consumption of the resistive-to-frequency design is in a middle point (41.85 mW).

Table 1. Comparison of obtained data.

Type	Power	Noise	Linearity	Array
Voltage Divider	2.28 mW	80 dB	No	No
Wheatstone Bridge	4.56 mW	55 dB	No	No
Anderson loop	114.91 mW	80 dB	Yes	Yes
Converter resistance-to-frequency	41.85 mW	42.5 dB	$R_s < 40 \text{ k}\Omega$	No

Results were repeated for the sensor TGS2610 and results similar to sensor TGS2600 were obtained, as Figures 15–17 show that.

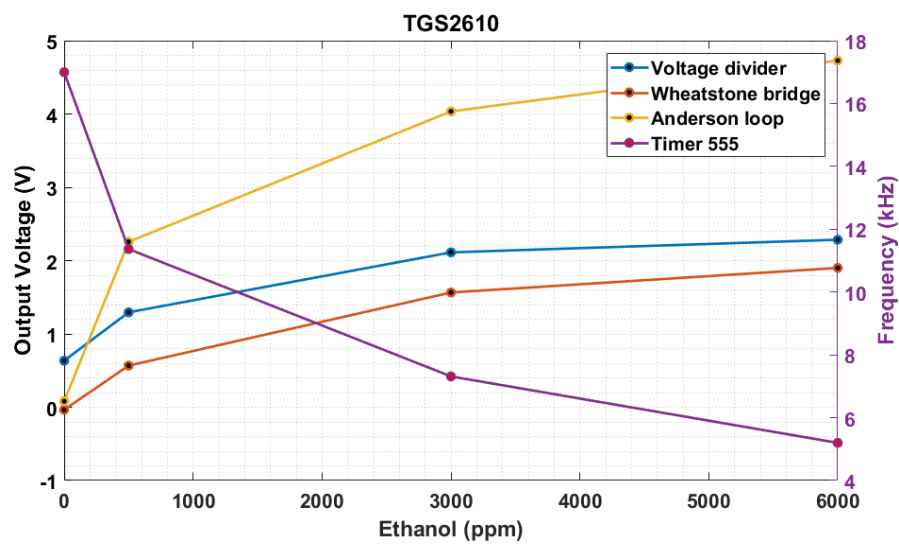


Figure 15. Value of second slope measured with the TGS 2610 in the rising edge.

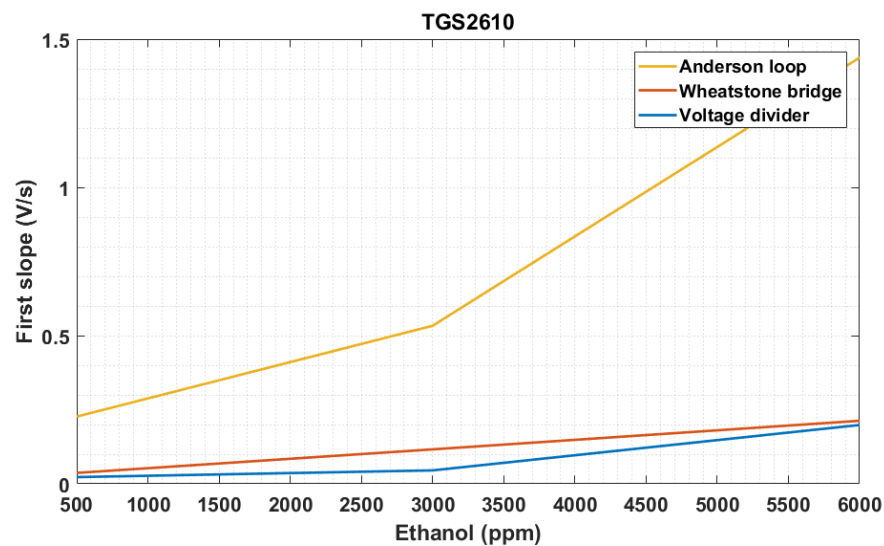


Figure 16. Value of first slope measured with the TGS 2610 in the rising edge.

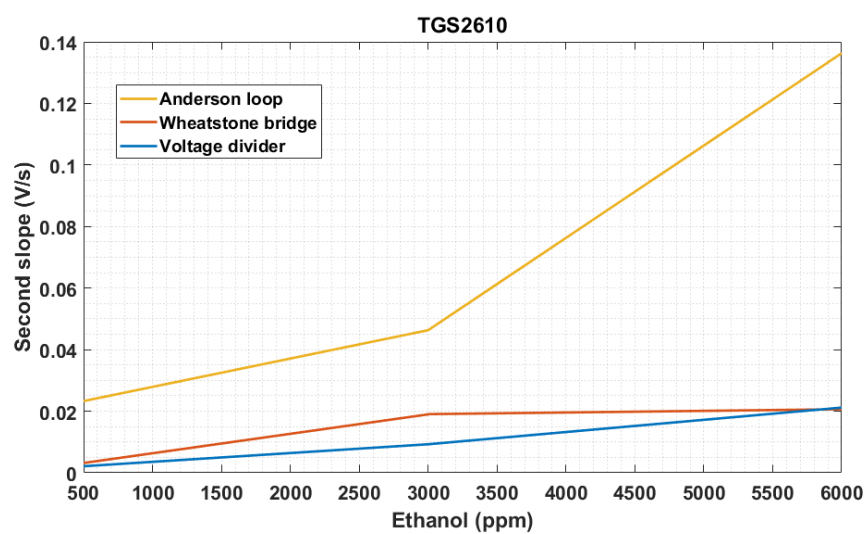


Figure 17. Value of second slope measured with the TGS 2610 when a measure of a sample starts.

The acquisition system behavior does not depend on the gas used in the measure, but it only depends on the electronic used (sensors, operational amplifiers, among others). For this reason, measuring other gases is not relevant from the point of view of the electronic conditioning, only the sensor, and it does not affect the results.

Finally, an equation, which models the behavior of each measurement system, is found (Figure S6 and S7 in the Supplementary Materials). The method to obtain this is a fitting process by using functions `fit()` and `fittype()` in MATLAB; it was tested a polynomial, logarithmic and exponential fitting with different orders. After different combinations, the best results were obtained by using a polynomial division, with the coefficient of determination (R-Squared) shown in Table 2. This fact confirms that all systems analyzed in this paper can be used to measure different concentrations of ethanol in the air. These models follow two types of equations:

- Whether the output voltage changes linearly with respect to the sensor resistance (Anderson loop and Converter resistance-to-frequency when the sensor resistance is under 40 kΩ [when TGS2610 is used]), their model has an equation such as Equation (1).
- However, if the system has not these characteristics (voltage divider and Wheatstone bridge), their equations correspond to (2).

$$out = \frac{p_2 R_{sen}^2 + p_1 R_{sen} + p_0}{R_{sen}^2 + q_1 R_{sen} + q_0} \quad (1)$$

$$out = \frac{p_3 R_{sen}^3 + p_2 R_{sen}^2 + p_1 R_{sen} + p_0}{R_{sen}^3 + q_2 R_{sen}^2 + q_1 R_{sen} + q_0} \quad (2)$$

Table 2. Coefficient of determination of model of each system.

R ²	Voltage Divider	Wheatstone Bridge	Anderson Loop	Converter Resistance-to-Frequency
TGS2600	0.999981	0.996644	0.999854	0.999379
TGS2610	0.999989	0.999841	0.999542	0.999999

The coefficients p_x and q_x for each equation are shown in Table 3.

Table 3. Coefficient of determination of model of each system.

Coefficients	Voltage Divider [p0,p1,p2,p3] [q0, q1, q2]	Wheatstone Bridge [p0,p1,p2,p3] [q0, q1, q2]	Anderson Loop [p0,p1,p2] [q0, q1]	Converter Resistance-to-Frequency [p0,p1,p2] [q0, q1]
p TGS2610	[2.483, 204.5, 3.067, 0.549]	[2.342, −125.7, 298.5, −0.433]	[4.203, −4.34 × 10 ⁴ , −4.75 × 10 ⁵]	[−227.9, 5.7 × 10 ⁷ , 6.6 × 10 ⁹]
q TGS2610	[617.4, −1.844, 0.865]	[1369, 61.32, 12.57]	[−8975, −5.3 × 10 ⁶]	[4930, 3.9 × 10 ⁵]
p TGS2600	[4.389, 957.5, 8.028, 0.908]	[3.068, −122.8, 245.5, −1.113]	[3.038, −22.6, 0.296]	[0.559, 2669, −1.486, 1.292]
q TGS2600	[611, −18.15, 0.789]	[440, 83.91, 12.4]	[86.83, 0.728]	[324.2, 17.69, 0.105]

4. Conclusions

Each circuit has benefits and drawbacks that the designer should consider. The voltage divider is the topology with less power consumption, and the noise is small enough to obtain good results. This makes this topology the best option to implement in a portable device. Furthermore, as it does not need the rising edge but only the voltage level, the frequency sampling can be much lower. The Wheatstone bridge is very difficult to implement using this type of sensor due to the big sensors' nominal resistance variability. For this reason, this topology is not recommended. The Anderson loop has some strengths: the output voltage linearly depends on the resistance sensor; and in case of the

design presented in this paper, the resistance range is quite high, from 10 k Ω up to 90 k Ω , which makes it useful for these sensors and others with lower ranges; and finally, it can be easily redesigned to have more than one sensor. However, this design has the higher power consumption, and it needs at least two different voltage sources. For this reason this topology is only recommended when the system is permanently connected to the power source, or for sensor arrays. The last topology presented is GIC-based. This is recommended when the voltage output cannot be measured with a good ADC because it provides a digital output which can be measured easily using a timer/counter.

Supplementary Materials: The following are available online at <http://www.mdpi.com/2079-9292/9/3/525/s1>.

Author Contributions: Conceptualization, J.C.G. and J.P.-S.; methodology, J.P.-S.; software, J.C.G.; validation, J.C.G., J.P.-S. and R.L.; formal analysis, J.C.G. and J.P.-S.; investigation, J.P.-S. and J.C.G.; resources, J.P.-S.; data curation, J.C.G.; writing—original draft preparation, J.C.G. and J.P.-S.; writing—review and editing, J.P.-S. and R.L.; visualization, J.C.G.; supervision, J.P.-S. and R.L.; project administration, J.P.-S. funding acquisition, J.P.-S. All authors have read and agreed to the published version of the manuscript.

Funding: This research was funded by the I+D+i Program of the Generalitat Valenciana [AICO/2016/046], Spain.

Acknowledgments: The Authors thanks Monica Catala from the Chemical department of Universitat Politècnica de Valencia, for his helpful technical assistance in the creation of the samples to measure in this paper.

Conflicts of Interest: The authors have no conflict of interest either financial or personal that affects the objectivity of the results. Rafael Lajara works for Analog Devices S.A.

References

- Chilo, J.; Sebastia, J.P.; Cupane, M.; Sogorb, T. E-nose application to food industry production. *IEEE Instrum. Meas. Mag.* **2016**, *19*, 27–33. [\[CrossRef\]](#)
- Cupane, M.; Sebastia, J.P.; Climent, E.; Guarrasi, V.; Sogorb, T.; Germana, M.A. Application of MOOSY32 eNose to Assess the Effects of Some Post Harvest Treatments on the Quality of ‘Salustiana’ Orange Juice. *J. Biosens. Bioelectron.* **2015**, *6*, 4–7.
- Olarte, O.; Chilo, J.; Sebastia, J.P.; Barbé, K.; Moer, W. Glucose detection in human sweat using an electronic nose. In Proceedings of the 35th Annual International Conference of the IEEE Engineering in Medicine and Biology Society (EMBC), Osaka, Japan, 3–7 July 2013; pp. 1462–1465.
- Pearce, T.C.; Schiffman, S.S.; Nagle, H.T.; Gardner, J.W. *Handbook of Machine Olfaction*; Wiley-VCH Verlag GmbH & Co. KGaA: Weinheim, Germany, 2004.
- Figaro. *Operating Principle-MOS-Type Gas Sensor*; Figaro USA Inc.: Arlington Heights, IL, USA, 2018; Available online: <http://www.figaro.co.jp/en/technicalinfo/principle/mos-type.html> (accessed on 19 July 2018).
- Yang, Z.; Huang, Y.; Chen, G.; Guo, Z.; Cheng, S.; Huang, S. Ethanol gas sensor based on Al-doped ZnO nanomaterial with many gas diffusing channels. *Sens. Actuators B Chem.* **2009**, *140*, 549–556. [\[CrossRef\]](#)
- Mirzaei, A.; Park, S.; Sun, G.; Kheel, H.; Lee, S.; Lee, C. Fe₂O₃/CO₃O₄ composite nanoparticle ethanol sensor. *J. Korean Phys.* **2016**, *69*, 373–380. [\[CrossRef\]](#)
- Du, H.; Xie, G.; Su, Y.; Tai, H.; Du, X.; Yu, H.; Zhang, Q. A New Model and Its Application for the Dynamic Response of RGO Resistive Gas Sensor. *Sensors* **2019**, *19*, 889. [\[CrossRef\]](#) [\[PubMed\]](#)
- Xie, D.; Chen, D.; Peng, S.; Yang, Y.; Xu, L.; Wu, F. A Low Power Cantilever-Based Metal Oxide Semiconductor Gas Sensor. *IEEE Electron Device Lett.* **2019**, *40*, 1178–1181. [\[CrossRef\]](#)
- Su, Y.; Xie, G.; Tai, H.; Li, S.; Yang, B.; Wang, S.; Zhang, Q.; Du, H.; Zhang, H.; Du, X.; et al. Self-Powered Room Temperature NO₂ Detection Driven by Triboelectric Nanogenerator under UV illumination. *Nano Energy* **2018**, *47*, 316–324. [\[CrossRef\]](#)
- Wang, S.; Jiang, Y.; Tai, H.; Liu, B.; Duan, Z.; Yuan, Z.; Pan, H.; Xie, G.; Du, X.; Su, Y. An integrated flexible self-powered wearable respiration sensor. *Nano Energy* **2019**, *63*, 103829. [\[CrossRef\]](#)
- Chen, J.; Wang, Z.L. Reviving Vibration Energy Harvesting and Self-Powered Sensing by a Triboelectric Nanogenerator. *Joule* **2017**, *1*, 480–521. [\[CrossRef\]](#)
- Figaro. *TGS 2610—for the Detection of LP Gas*; Figaro USA Inc.: Arlington Heights, IL, USA, 2014.
- Figaro. *TGS 2600—for the Detection of Air Contaminants*; Figaro USA Inc.: Arlington Heights, IL, USA, 2013.
- Figaro. *Technical Information for TGS2600*; Figaro Engineering Inc.: Mino, Japan, 2004.
- Figaro. *Technical Information for TGS2610*; Figaro Engineering Inc.: Mino, Japan, 2006.

17. Kakoty, P.; Bhuyan, M. SnO₂ based gas sensors: Why it is so popular? In Proceedings of the IEEE International Conference on Electrical, Computer and Communication Technologies (ICECCT), Coimbatore, India, 5–7 March 2015.
18. Anderson, K.F. Your Successor to the Wheatstone Bridge? NASA's Anderson Loop. *IEEE Instrum. Meas. Mag.* **1998**, *1*, 5–15. [CrossRef]
19. Anderson, K.F. The loop technique for strain gage rosette signal conditioning. *Exp. Tech.* **2000**, *24*, 21–23. [CrossRef]
20. Shelake, V.G.; Kudale, A.B.; Mujawar, M.U.; Raicar, S.P.; Kamat, R.K.; Sawant, S.R. Evaluation of Anderson Loop for Resistive Sensors using PSPICE. In Proceedings of the Control Instrumentation System Conference (CISCON2005), MIT, Manipal, India, 11–12 November 2005.
21. De Albornoz, A.D.C.; Muñoz, D.R.; Moreno, J.S.; Berga, S.C.; Antón, E.N. A new gas sensor electronic interface with generalized impedance converter. *Sensors Actuators B Chem.* **2008**, *134*, 591–596. [CrossRef]
22. 3.1.1. STEMLab 125-10 vs. STEMLab 125-14 (Originally Red Pitaya v1.1)—Red Pitaya STEMLab 0.97 Documentation. Available online: <https://redpitaya.readthedocs.io/en/latest/developerGuide/125-10/vs.html> (accessed on 20 July 2018).
23. Muñoz, D.R.; Moreno, J.S.; Escrivà, C.R.; Berga, S.C.; Antón, A.E.N. Constant current drive for resistive sensors based on Generalized Impedance Converter. *IEEE Trans. Instrum. Meas.* **2008**, *57*, 2290–2296. [CrossRef]
24. Ramírez-Muñoz, D.; Sánchez, J.; Casans, S.; Reig, C.; Navarro, A.E. Series sensor current loop from a Generalized Impedance Converter circuit with reference current input. In Proceedings of the 2006 IEEE Instrumentation and Measurement Technology Conference Proceedings, Sorrento, Italy, 24–27 April 2006; pp. 2265–2270.
25. Cuenca, A.D.; Beltran, L.O.; Vilela, J.P.T.; Miranda, J. Comparison of microstrain indicators measurements based on Anderson's Loop and Wheatstone Bridge. In Proceedings of the 16th International Conference on Electronics, Communications and Computers (CONIELECOMP'06), Puebla, Mexico, 1 March–27 February 2006.
26. Texas Instruments. *TLC555 LinCMOS TM Timer*; Texas Instruments: Dallas, TX, USA, 2016.
27. Franco, S. *Active Filters: Part II" in Design with Operational Amplifiers and Analog Integrated Circuits*, 3rd ed.; McGraw-Hill: New York, NY, USA, 2001; pp. 160–210.
28. New Feature: High Speed Continuous Recording—Redpitaya Forum. Available online: <https://forum.redpitaya.com/viewtopic.php?f=7&t=317> (accessed on 25 July 2019).



© 2020 by the authors. Licensee MDPI, Basel, Switzerland. This article is an open access article distributed under the terms and conditions of the Creative Commons Attribution (CC BY) license (<http://creativecommons.org/licenses/by/4.0/>).