

High Level Synthesis of Multiclass SVM using Code Refactoring to Classify Brain Cancer from Hyperspectral Images

Supplementary Material

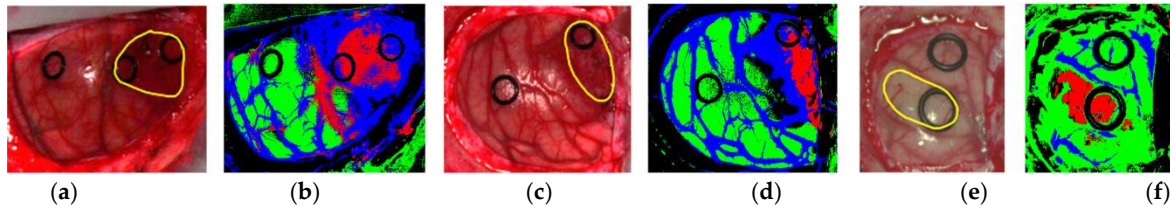


Figure S1. Classification results of the SVM multiclass classifier for the employed HS cubes. (a), (c) and (e) are the synthetic RGB representations of the HS images, where the tumor area is surrounded in yellow [34]. (b), (d) and (f) Classification maps generated by the SVM multiclass classifier implementation. Normal, tumor, hypervascularized and background classes are represented in green, red, blue, and black color, respectively.