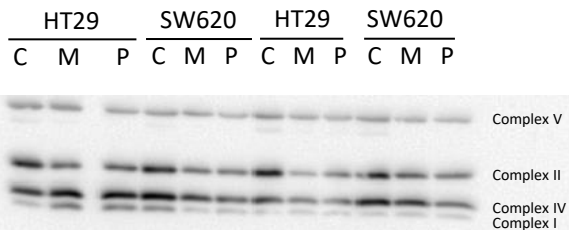


Blot - OXPHOS complexes (Figure 3)

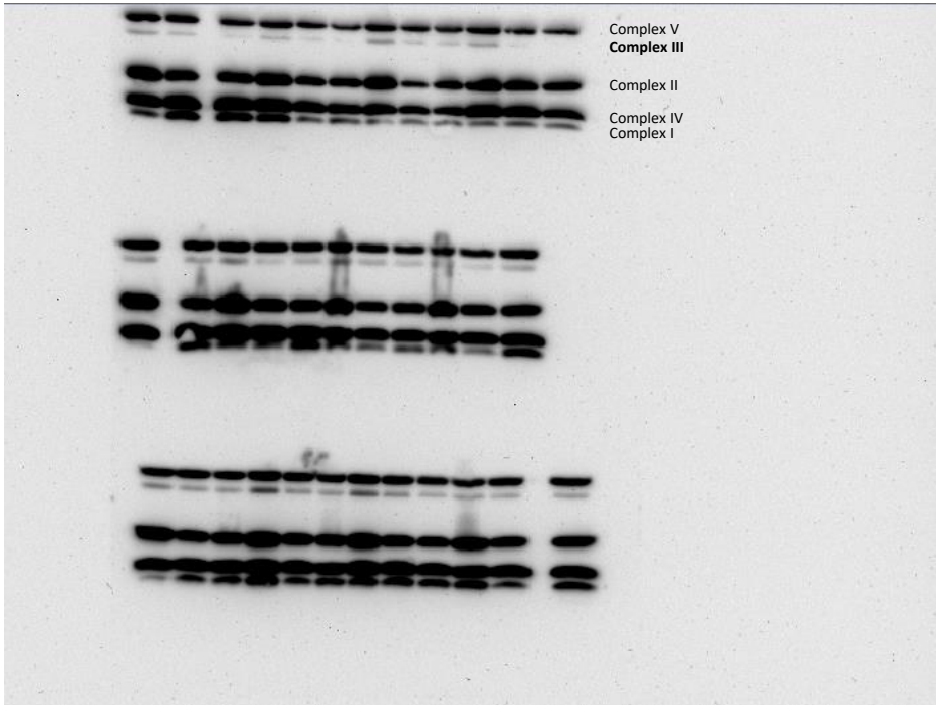


C: vehicle-treated cells
M: miltefosine-treated cells
P: perifosine-treated cells

3 gels blotted into the same membrane. All gels follow the same order.

Blot - OXPHOS complexes (Figure 3) **Further exposition for Complex III**

HT29			SW620			HT29			SW620		
C	M	P	C	M	P	C	M	P	C	M	P

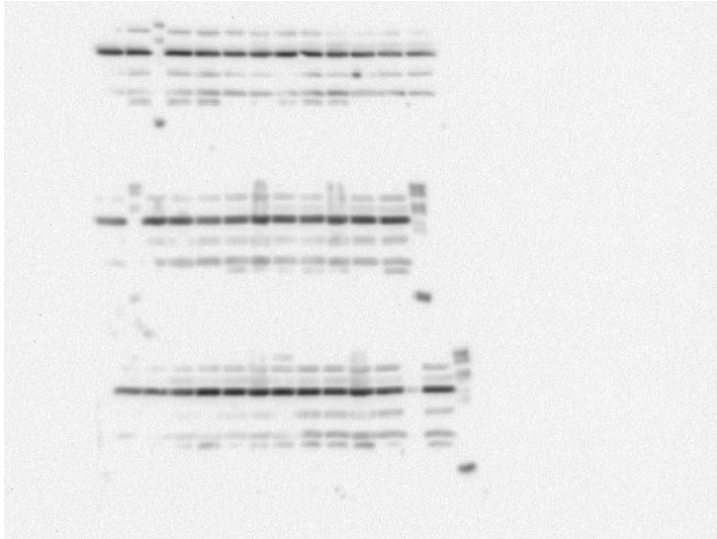


C: vehicle-treated cells
M: miltefosine-treated cells
P: perifosine-treated cells

3 gels blotted into the same membrane. All gels follow the same order.

Blot - GAPDH complexes (Figure 3)

HT29			SW620			HT29			SW620		
C	M	P	C	M	P	C	M	P	C	M	P

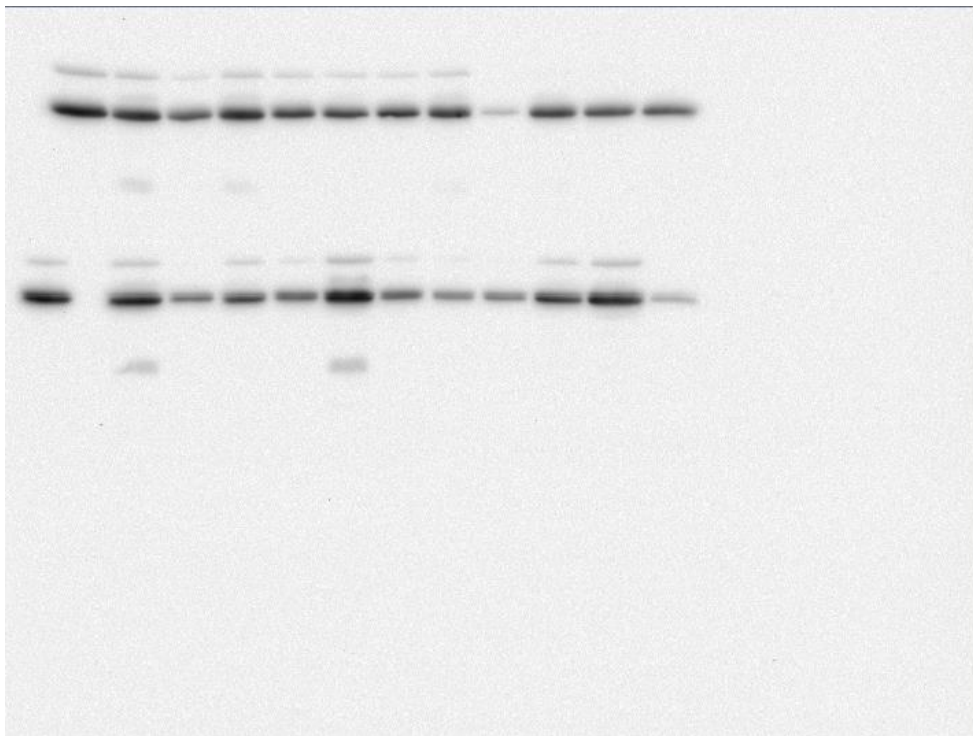


C: vehicle-treated cells
M: miltefosine-treated cells
P: perifosine-treated cells

3 gels blotted into the same membrane. All gels follow the same order.
NOTE: This blot was performed after stripping of OXPHOS membrane.

Blot – PDH (Figure 4)

HT29		SW620		HT29		SW620		HT29		SW620	
C	P	C	P	C	P	C	P	C	P	C	P

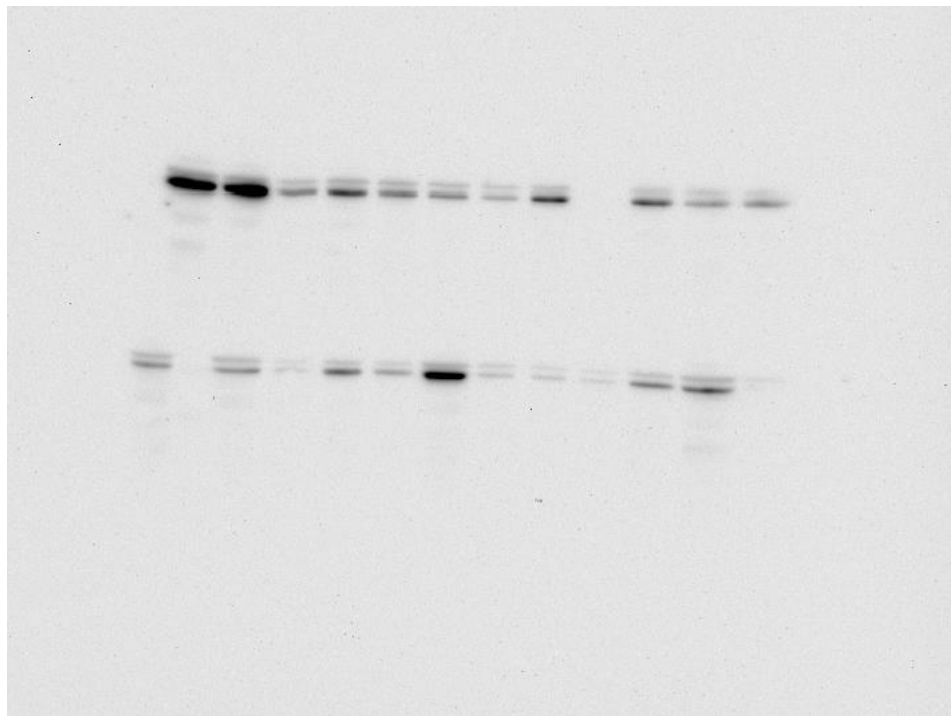


C: vehicle-treated cells
P: perifosine-treated cells

2 gels blotted into the same membrane. All gels follow the same order.

Blot – IDH (Figure 4)

HT29		SW620		HT29		SW620		HT29		SW620	
C	P	C	P	C	P	C	P	C	P	C	P

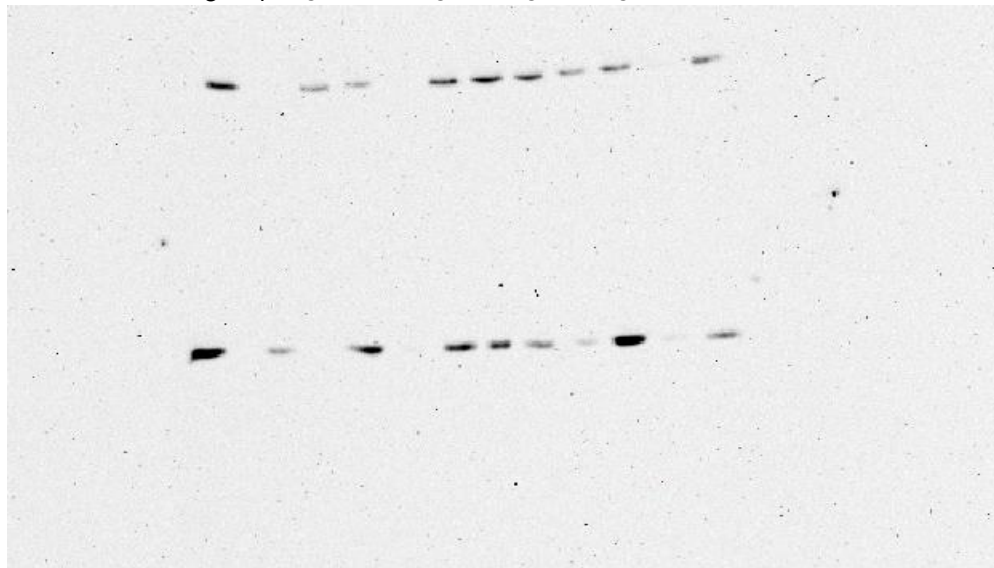


C: vehicle-treated cells
P: perifosine-treated cells

2 gels blotted into the same membrane. All gels follow the same order.

Blot – UCP2 (Figure 4)

HT29		SW620		HT29		SW620		HT29		SW620	
C	P	C	P	C	P	C	P	C	P	C	P

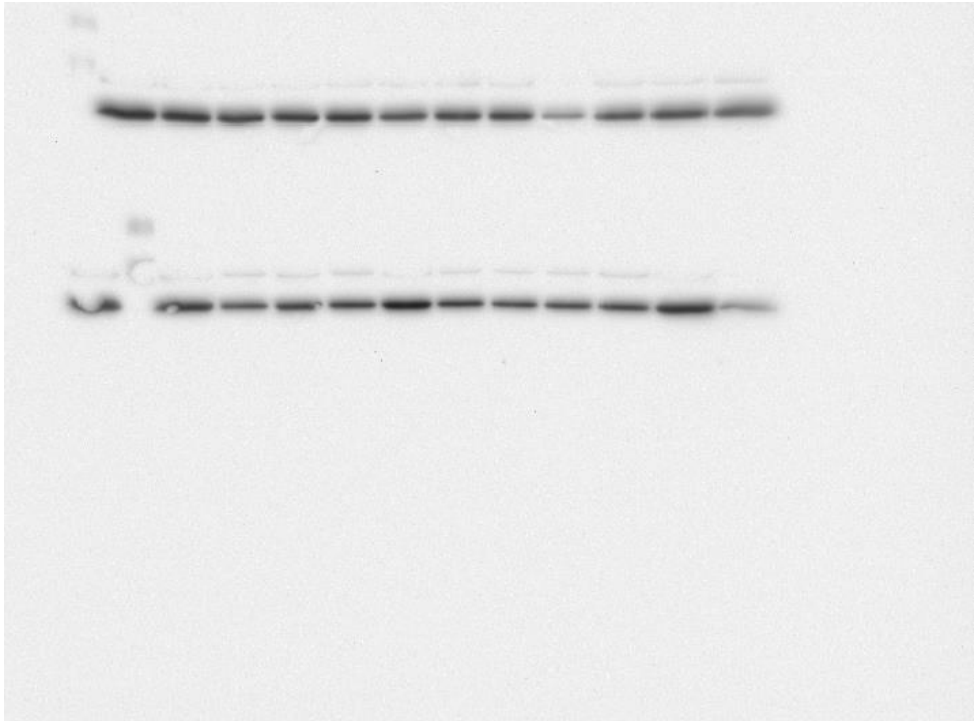


C: vehicle-treated cells
P: perifosine-treated cells

2 gels blotted into the same membrane. All gels follow the same order.

Blot – GAPDH (Figures 4 and 6)

HT29		SW620		HT29		SW620		HT29		SW620	
C	P	C	P	C	P	C	P	C	P	C	P

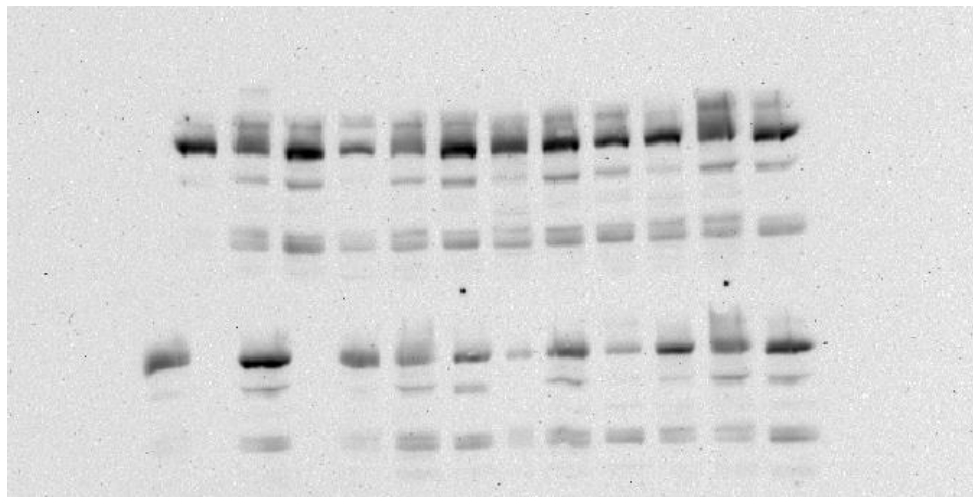


C: vehicle-treated cells
P: perifosine-treated cells

2 gels blotted into the same membrane. All gels follow the same order.

Blot – PARP (Figure 6)

HT29		SW620		HT29		SW620		HT29		SW620	
C	P	C	P	C	P	C	P	C	P	C	P

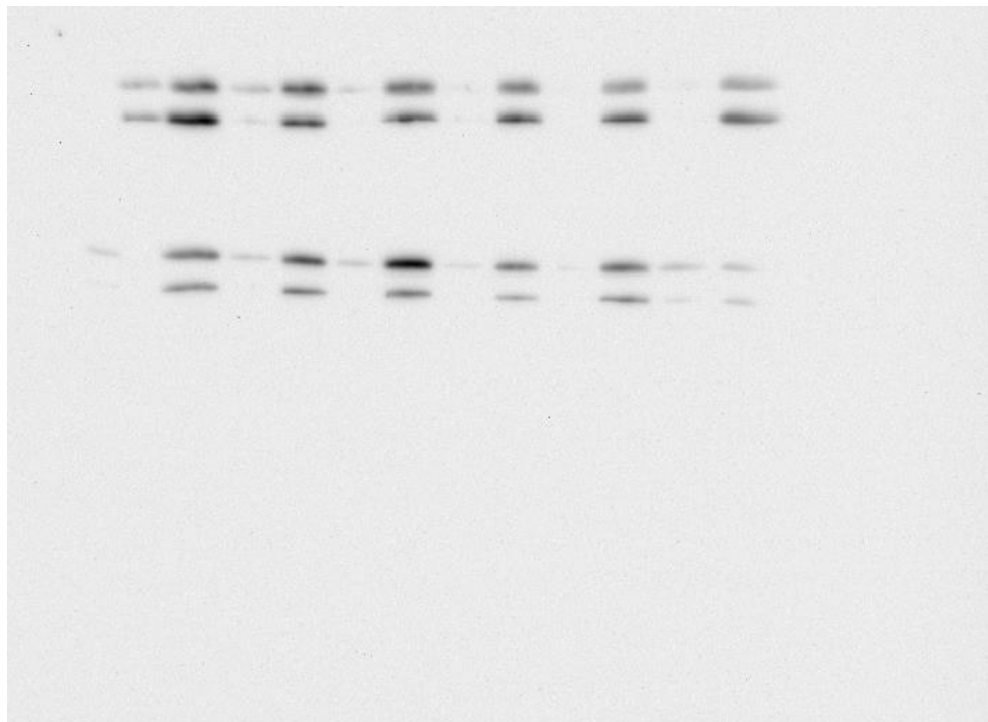


C: vehicle-treated cells
P: perifosine-treated cells

2 gels blotted into the same membrane. All gels follow the same order.

Blot – LC3 (Figure 6)

HT29		SW620		HT29		SW620		HT29		SW620	
C	P	C	P	C	P	C	P	C	P	C	P



C: vehicle-treated cells
P: perifosine-treated cells

2 gels blotted into the same membrane. All gels follow the same order.