

Figure S1: Monthly differences in testicular size (A), echotexture (C and D) and testicular-artery blood supply (B) in Rasa Aragonesa rams. Results are shown as mean \pm SEM of $n = 8$. Different let-ters indicate $p < 0.05$.

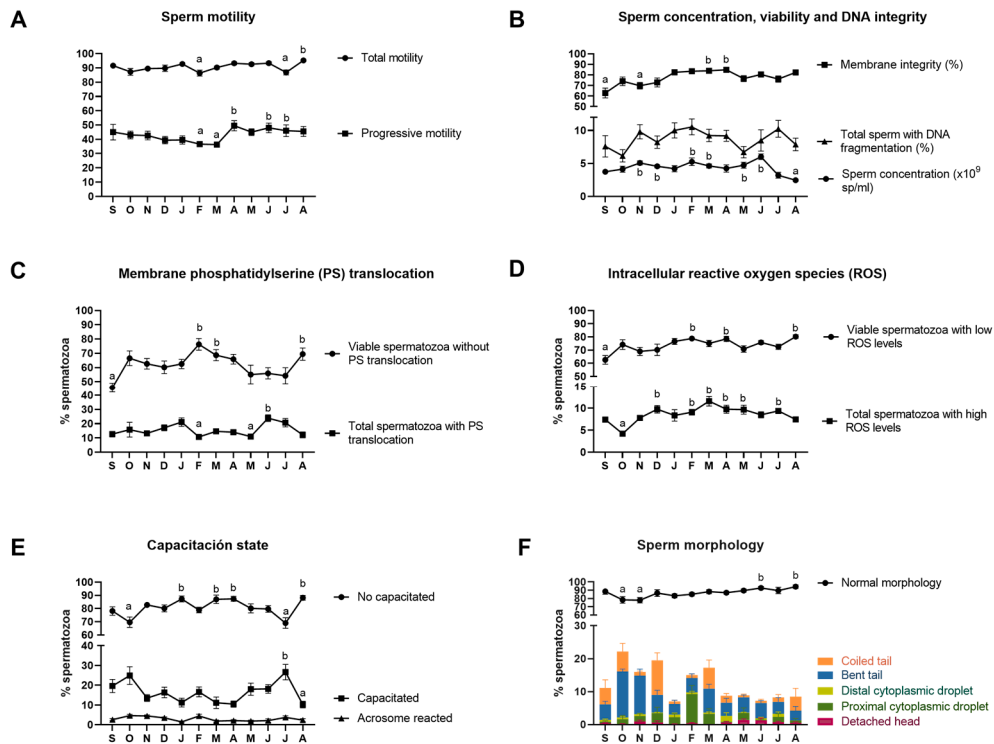


Figure S2: Monthly differences in seminal quality parameters in Rasa Aragonesa rams. Results are shown as mean \pm SEM of $n = 8$. Different letters indicate $p < 0.05$.