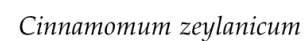


Cinnamomum casia



Scan El
TIC
1.02e6

100

16.02

15.24

10.85

10.74

19.70

23.74

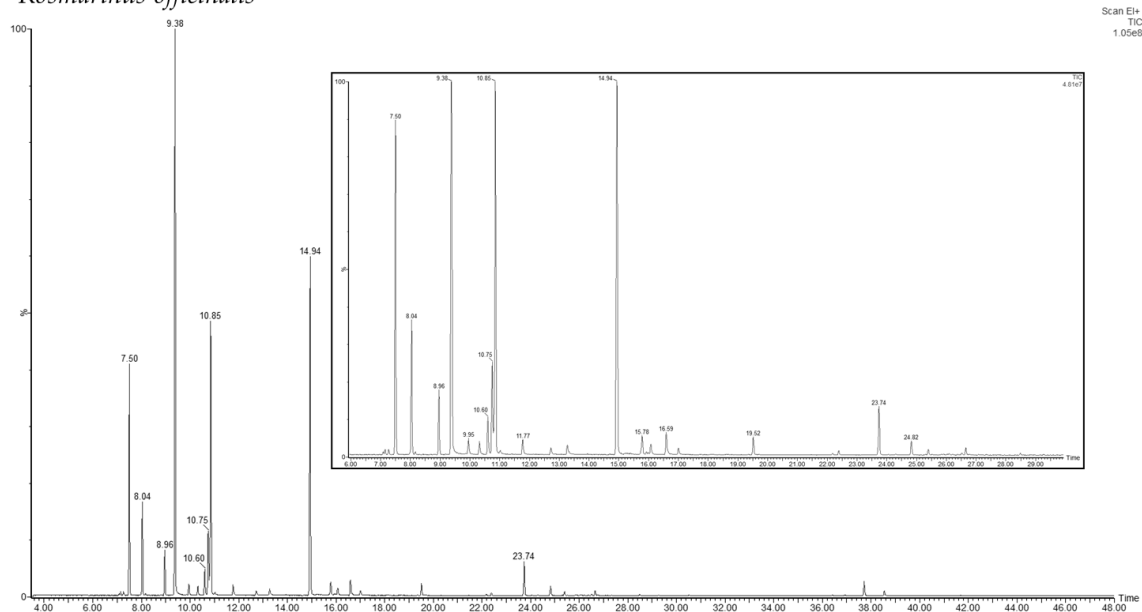
7.00 8.02 8.90 9.62 10.85 13.74 15.24 15.54 15.86 16.02 16.61 18.00 18.50 19.12 19.70 22.64 23.74

AU

Time

oils.

Rosmarinus officinalis



Salvia lavandulifolia

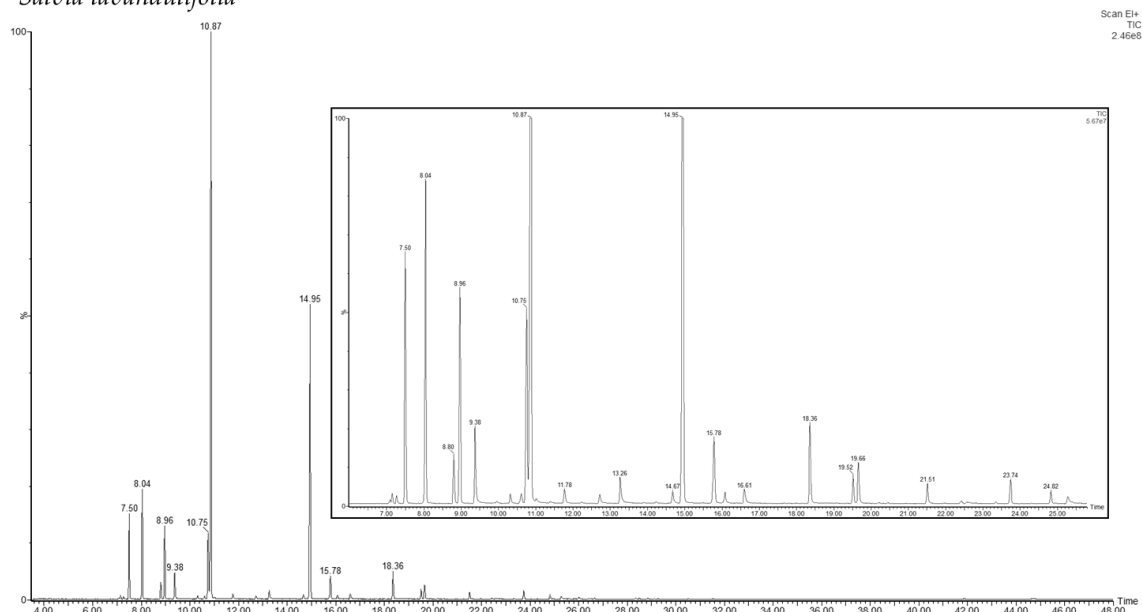
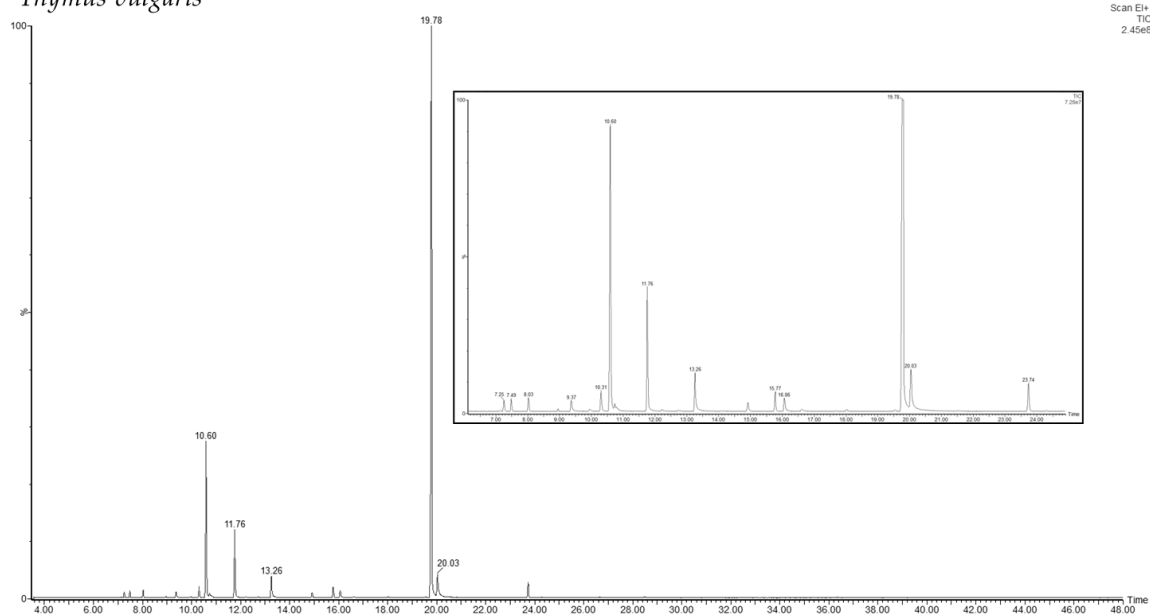


Figure S1 (continuation): GS-MS chromatograms of fruit and vegetables, and aromatic herbs and spices essential oils.

Thymus vulgaris



Apium graveolens

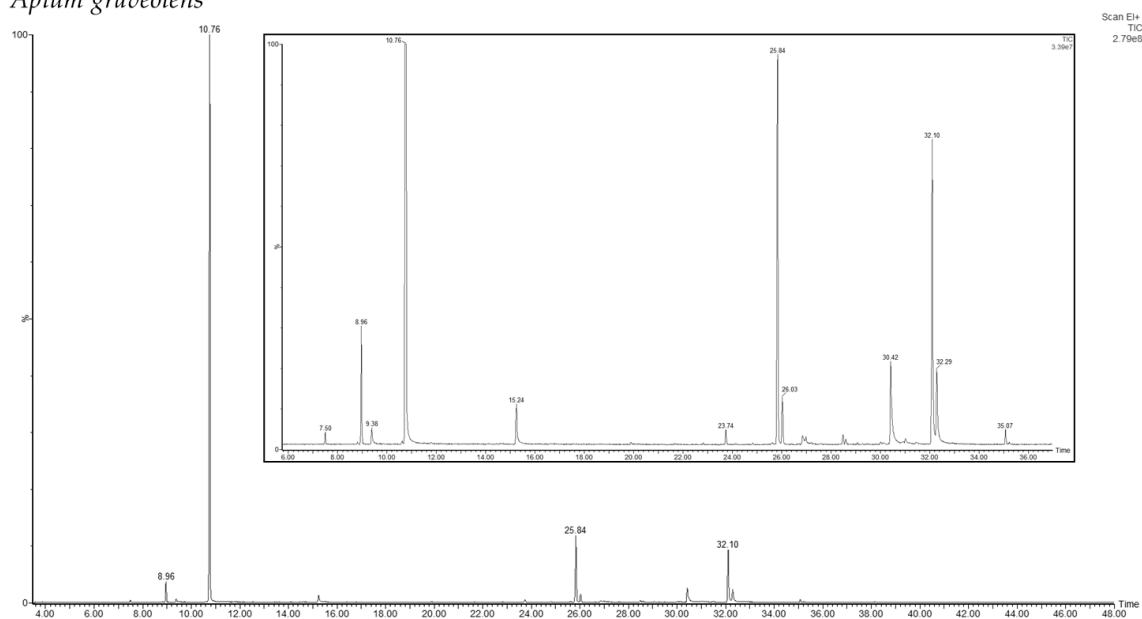
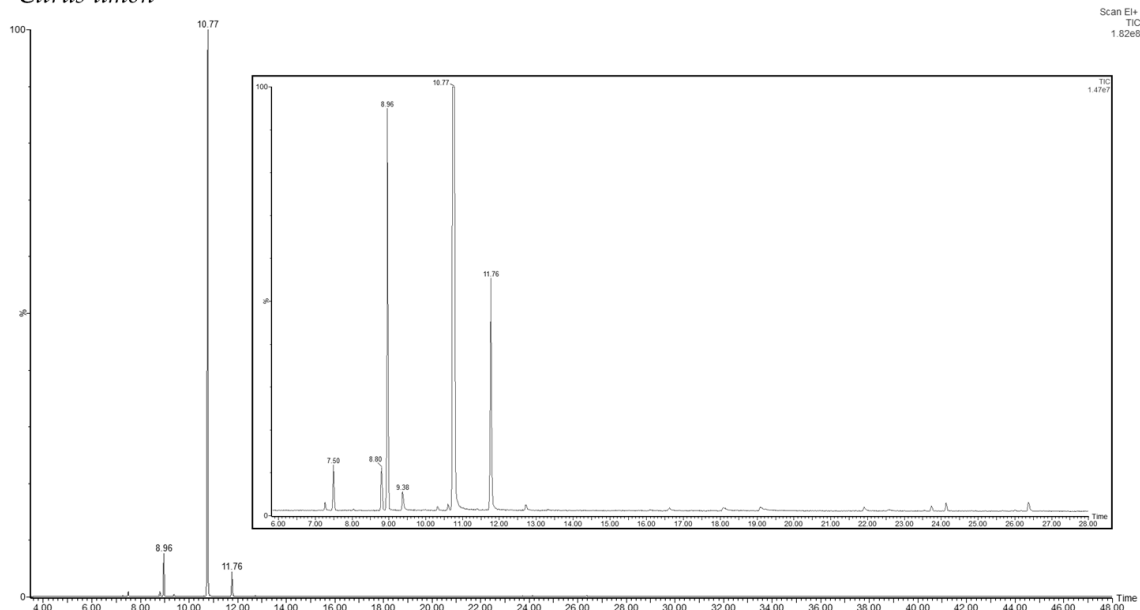


Figure S1 (continuation): GS-MS chromatograms of fruit and vegetables, and aromatic herbs and spices essential oils.

Citrus limon



Citrus paradisi

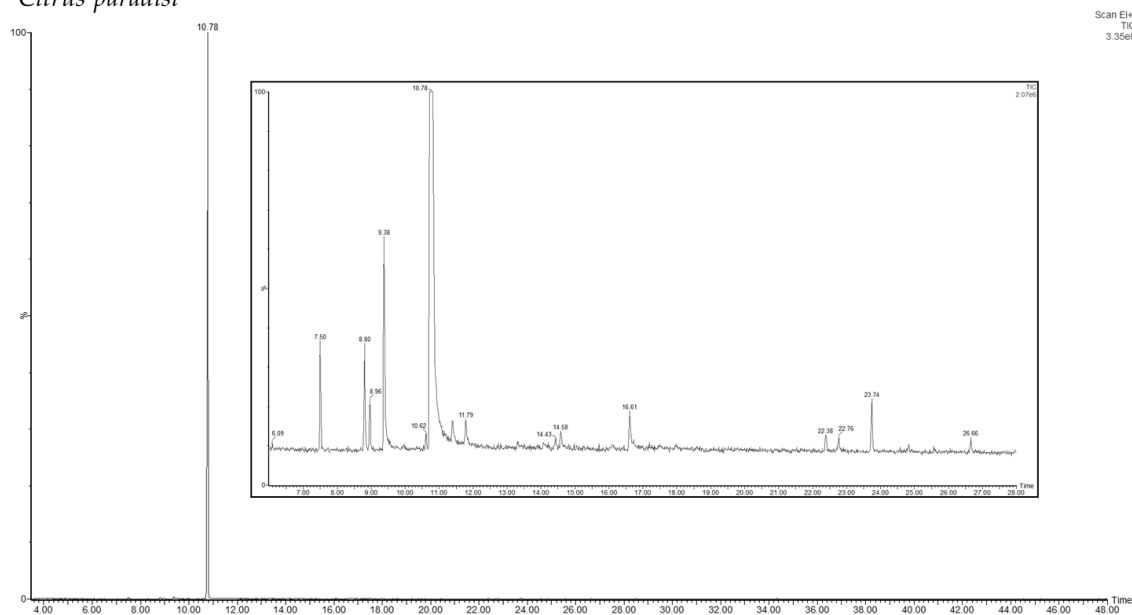
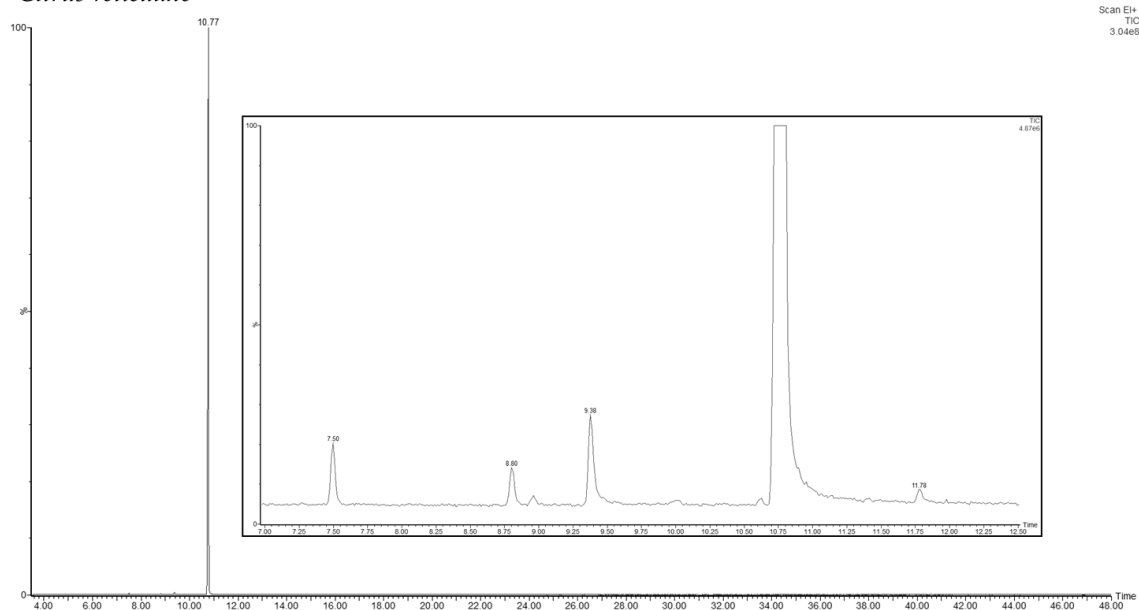


Figure S1 (continuation): GS-MS chromatograms of fruit and vegetables, and aromatic herbs and spices essential oils.

Citrus reticulata



Citrus sinensis

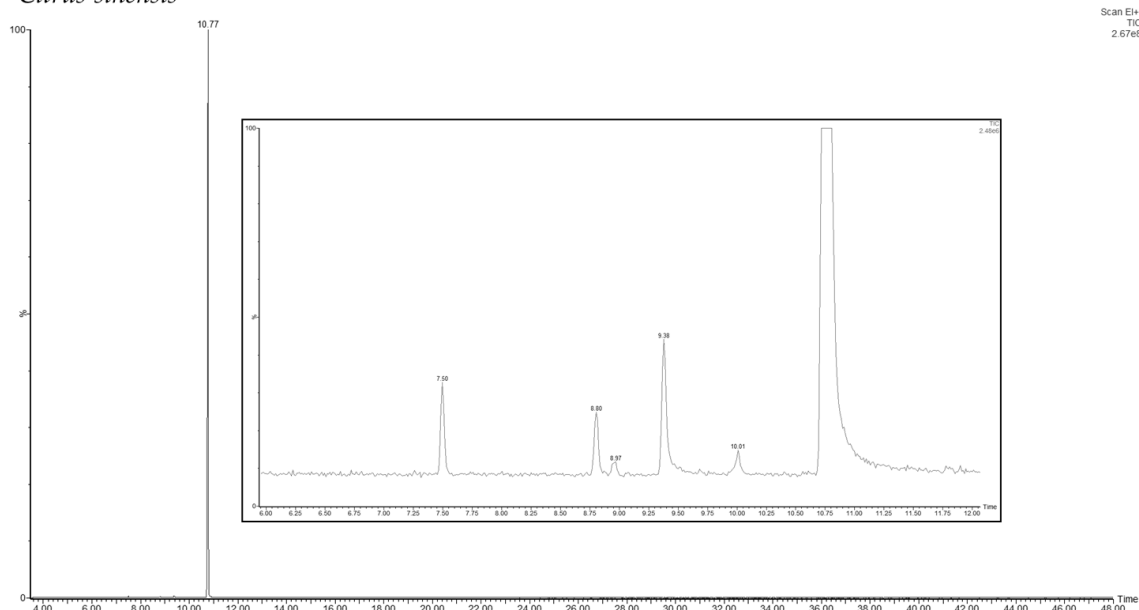


Figure S1 (continuation): GS-MS chromatograms of fruit and vegetables, and aromatic herbs and spices essential oils.

Foeniculum vulgare

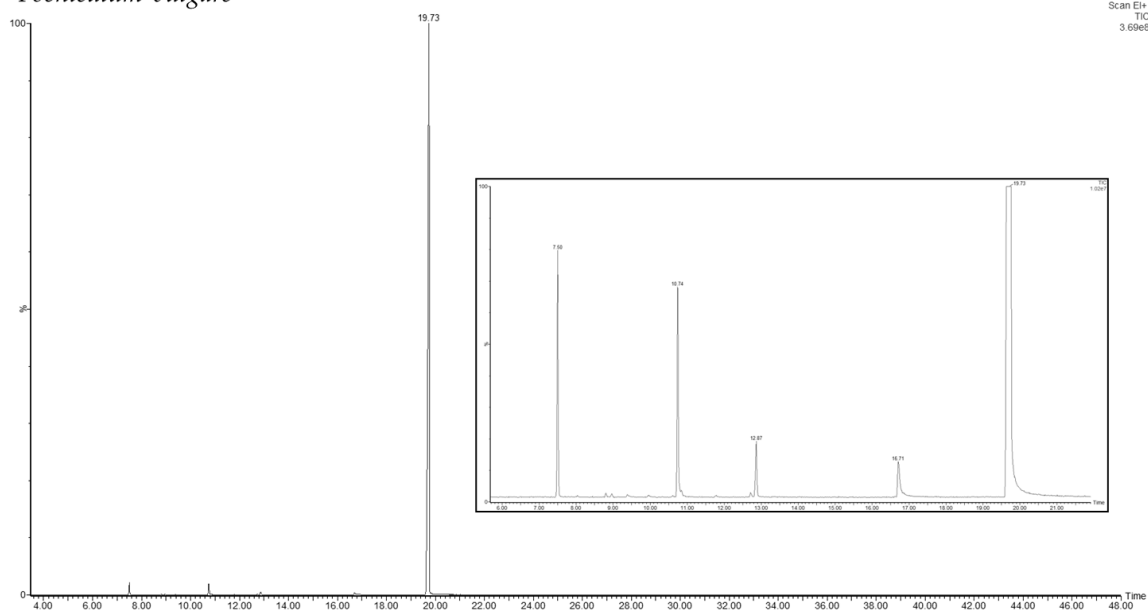


Figure S1 (continuation): GS-MS chromatograms of fruit and vegetables, and aromatic herbs and spices essential oils.