

Supplementary Material

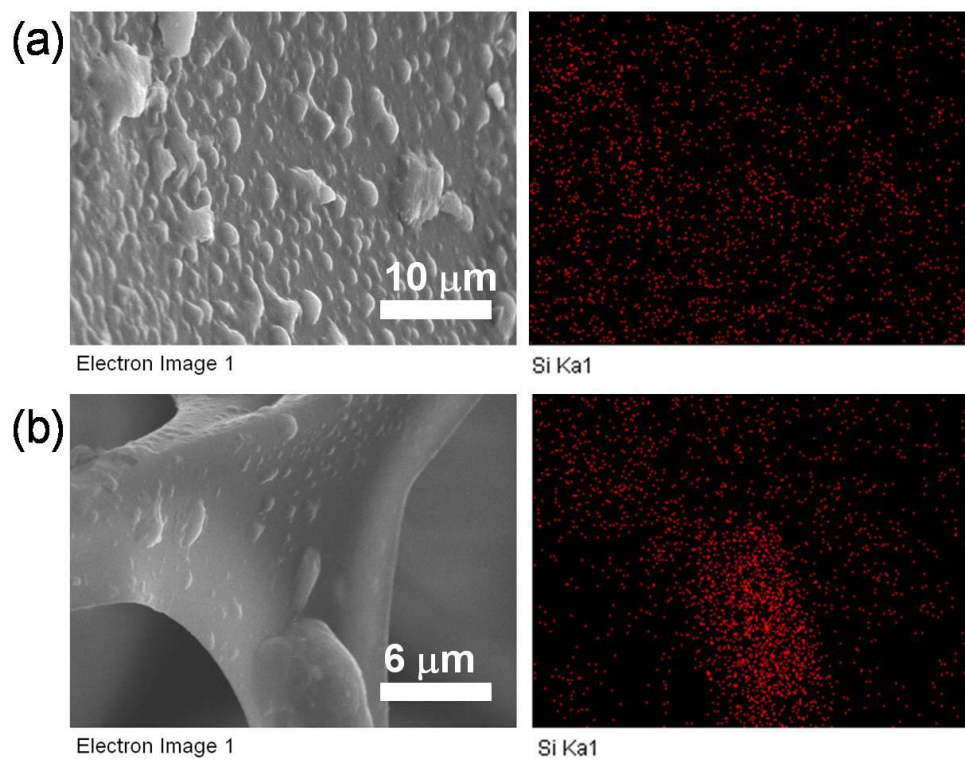


Figure S1. SEM images and element distribution maps of (a) the superhydrophobic PU sponge, (b) the superhydrophobic melamine sponge.



Figure S2. Photograph of the oil collected via the continuous absorption and removal of isooctane from the water surface.

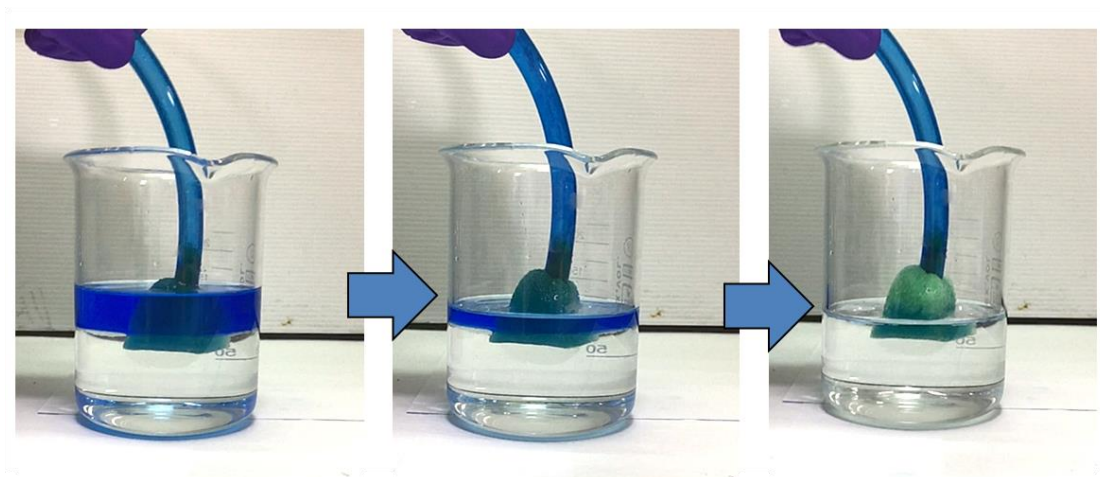


Figure S3. Photographs of the continuous absorption and removal of isooctane oil from the surfaces of 0.1 M $\text{HCl}_{(\text{aq})}$ using the superhydrophobic PU sponge.

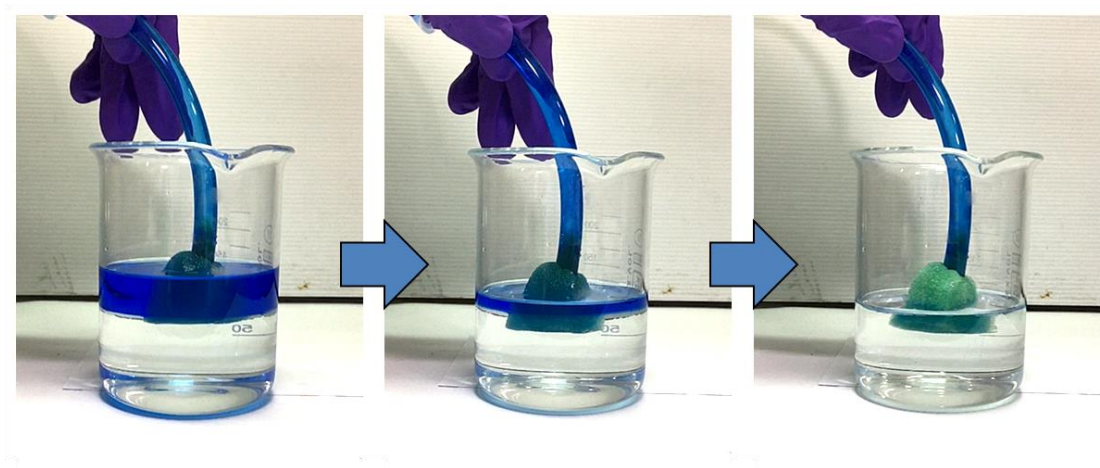


Figure S4. Photographs of the continuous absorption and removal of isooctane oil from the surfaces of 0.1 M $\text{NaOH}_{(\text{aq})}$ using the superhydrophobic PU sponge.

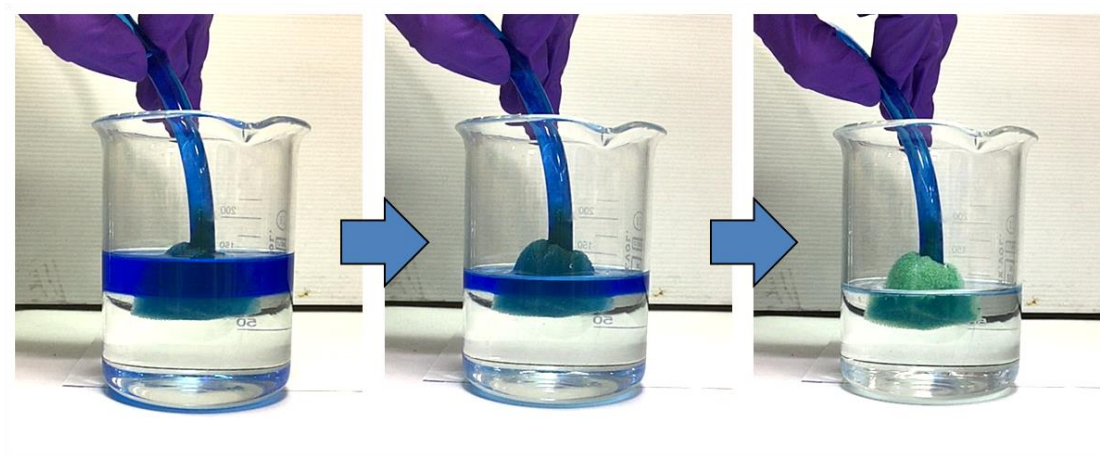


Figure S5. Photographs of the continuous absorption and removal of isooctane oil from the surfaces of 3.5 wt % $\text{NaCl}_{(\text{aq})}$ using the superhydrophobic PU sponge.