

Supplementary Materials

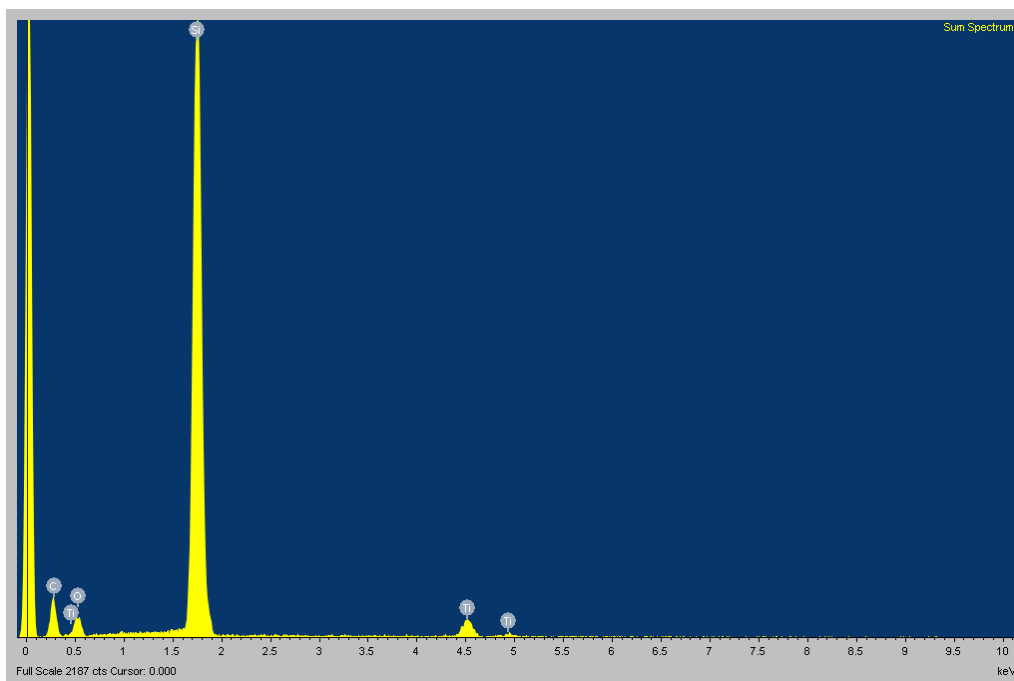


Figure S1. EDS spectrum of TiO₂ NRs deposited by spray coating on silicon substrates from the chloroform solution 0.02 M with an application time of 1 min (sample A-ch). The spectrum shows the presence of Ti, C and O. The SEM measurements were performed with an accelerating voltage of 1 kV, a working distance of 3.7 mm and an aperture size of 20 μm .