

Supplementary Materials

Identification of bacterial communities involved in bioweathering crusts on limestone sculptures of the Longmen Grottoes

Chaolong Ma^{a,*}, Zilong Fang^a, Xinjian Li^a, Xiaobo Liu^{b,*}

^a Longmen Grottoes Academy, Luoyang, Henan 471000, China.

^b School of Environmental and Biological Engineering, Nanjing University of Science and Technology, Nanjing, Jiangsu 210094, China.

*To whom the correspondence should be addressed: xbliu@njust.edu.cn

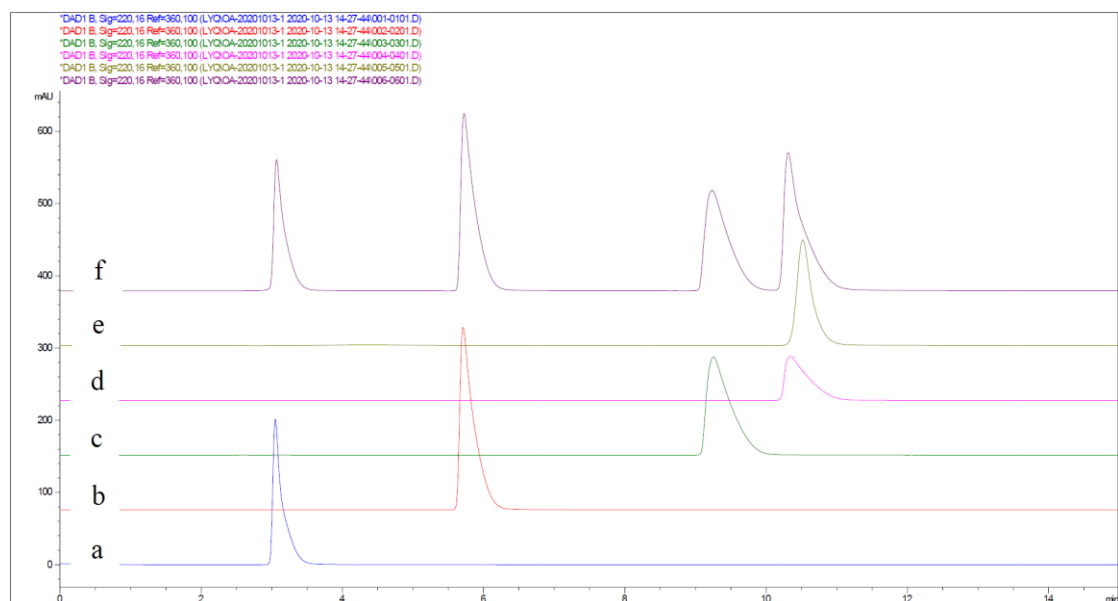


Figure S1. Liquid chromatogram of the standard substances of oxalic acid (a), lactic acid (b), citric acid (c), succinic acid (d), fumaric acid (e), and (f) of mixture of the four standard substances.

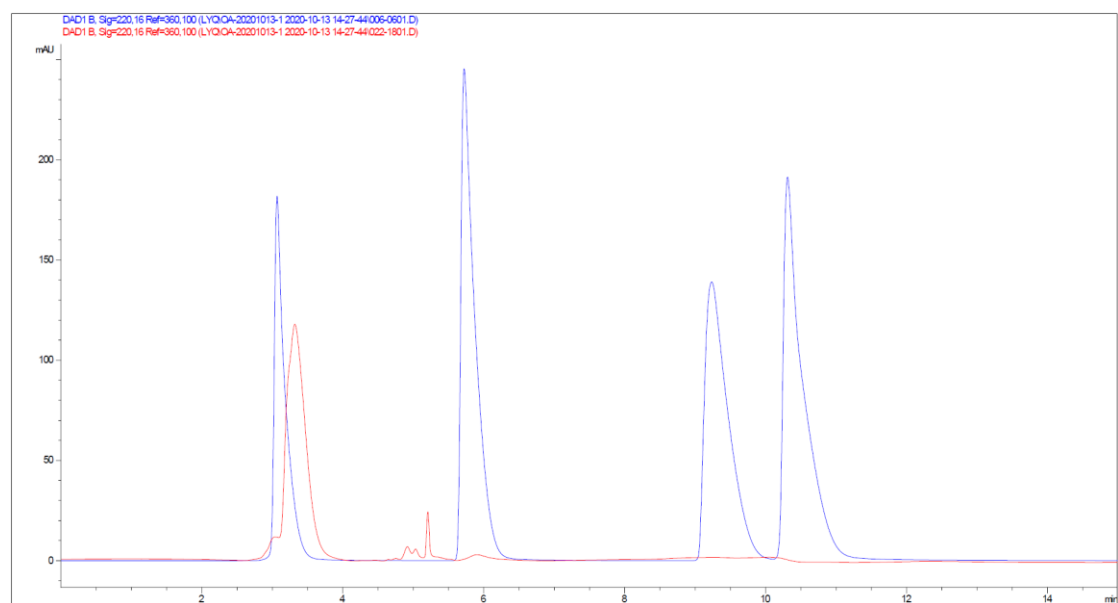


Figure S2. Liquid chromatogram of the solution of Sample 1 where oxalic acid, lactic acid and succinic acid were detected.

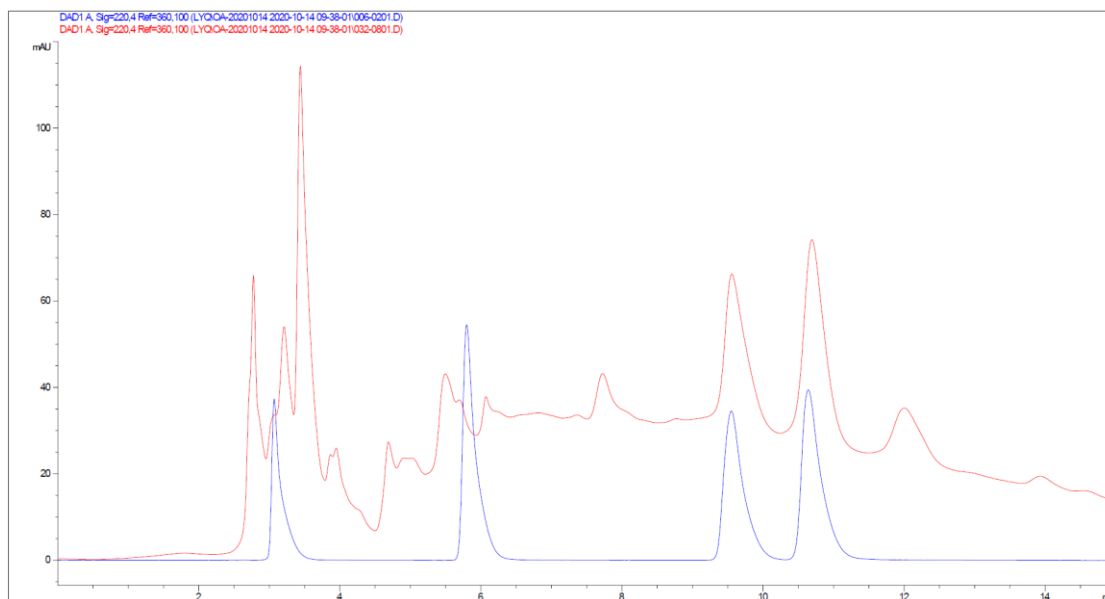


Figure S3. Liquid chromatogram of the solution of Sample 2 where citric acid, succinic acid and fumaric acid were detected.

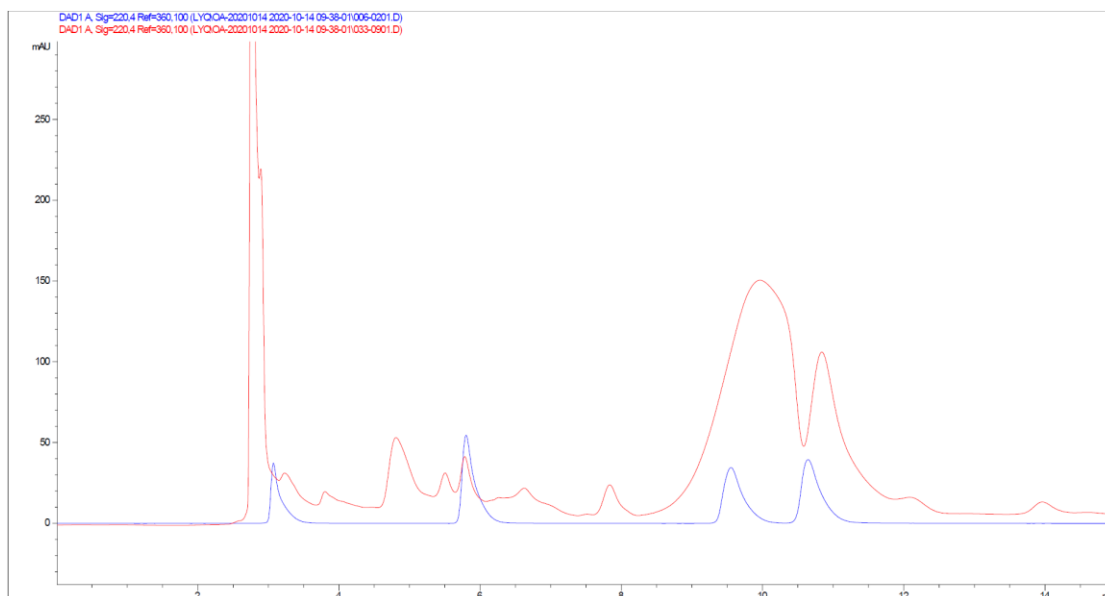


Figure S4. Liquid chromatogram of the solution of Sample 3 where lactic acid, citric acid and fumaric acid were detected.

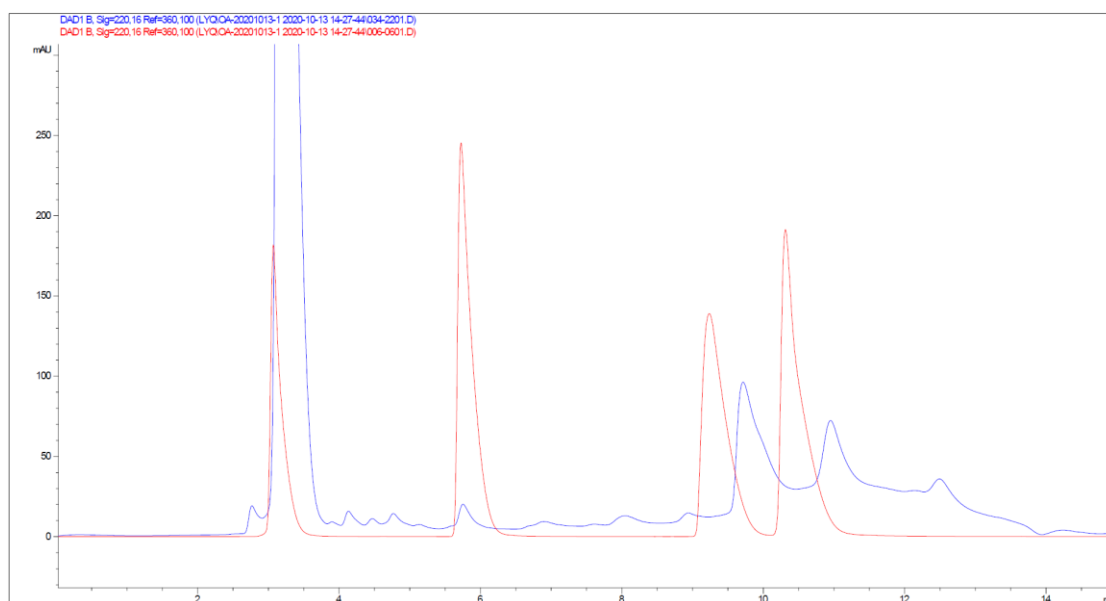


Figure S5. Liquid chromatogram of the solution of Sample 4 where oxalic acid and lactic acid were detected.

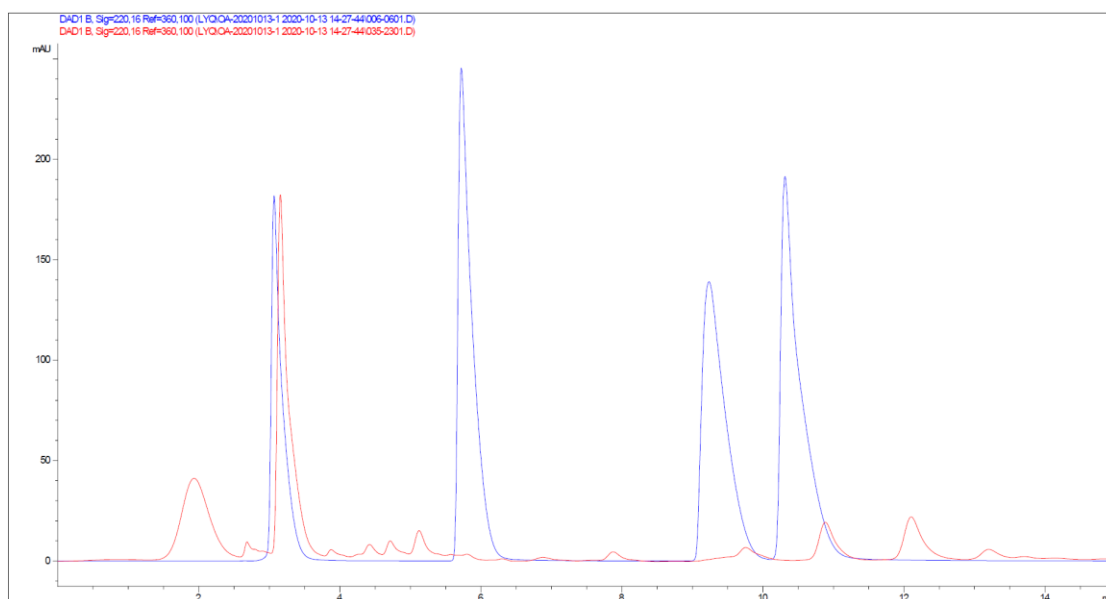


Figure S6. Liquid chromatogram of the solution of Sample 5 where oxalic acid was detected.

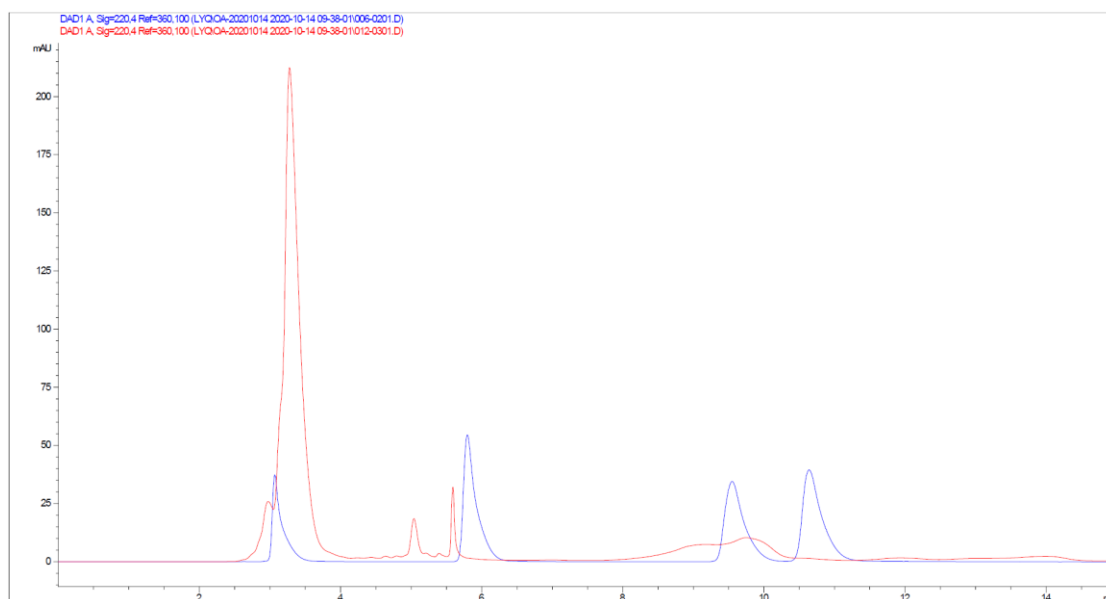


Figure S7. Liquid chromatogram of the solution of Sample 6 where citric acid was detected.