

Supplementary Materials: Room Temperature Synthesis of Branched ZnO Nanowires Array with Tunable Morphology

Wei Zhao ^{1,2}, Hsiang-Shun Chang ^{1,3}, Kefu Yao ^{1,3} and Yang Shao ^{1,3,*}

¹ School of Materials Science and Engineering, Tsinghua University, Beijing 100084, China

² State Key Laboratory of New Ceramics and Fine Processing, Beijing 100084, China

³ Key Laboratory for Advanced Materials Processing Technology, Ministry of Education, Beijing 100084, China

* Correspondence: shaoyang@tsinghua.edu.cn (Y. S.)

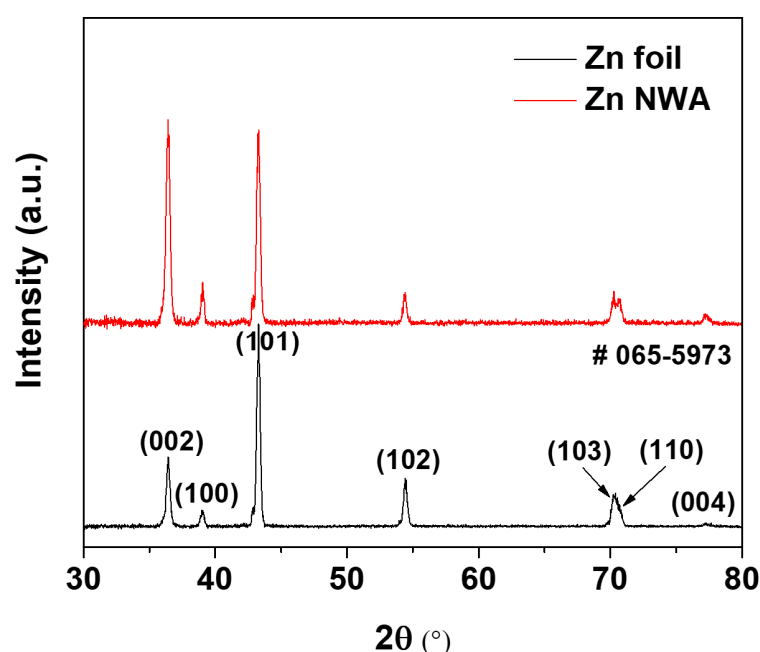


Figure S1. XRD patterns of Zn foil and Zn NWA.

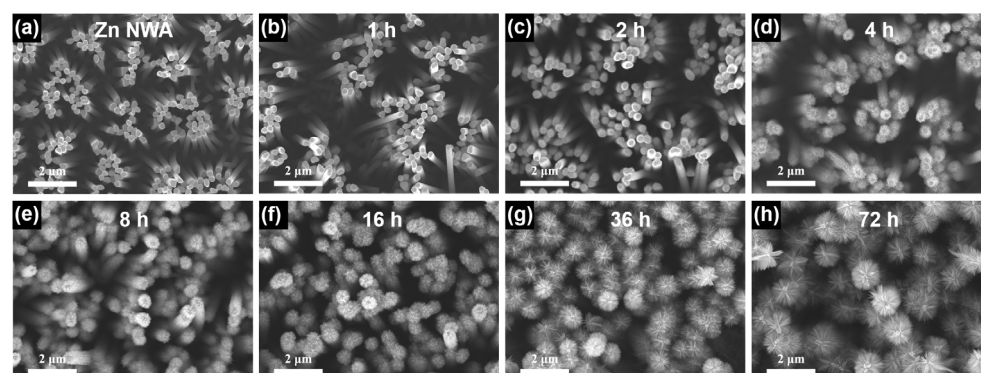


Figure S2. SEM images of (a) Zn NWA and B-ZnO NWA prepared with an immersion time of (b) 1 h, (c) 2 h, (d) 4 h, (e) 8 h, (f) 16 h, (g) 36 h, (h) 72 h.

Citation: Zhao, W.; Chang, H.-S.; Yao, K.; Shao, Y. Room Temperature Synthesis of Branched ZnO Nanowires Array with Tunable Morphology. *Coatings* **2023**, *13*, 275. <https://doi.org/10.3390/coatings13020275>

Academic Editor: Emerson Coy

Received: 25 December 2022

Revised: 17 January 2023

Accepted: 20 January 2023

Published: 25 January 2023



Copyright: © 2023 by the authors. Licensee MDPI, Basel, Switzerland. This article is an open access article distributed under the terms and conditions of the Creative Commons Attribution (CC BY) license (<https://creativecommons.org/licenses/by/4.0/>).

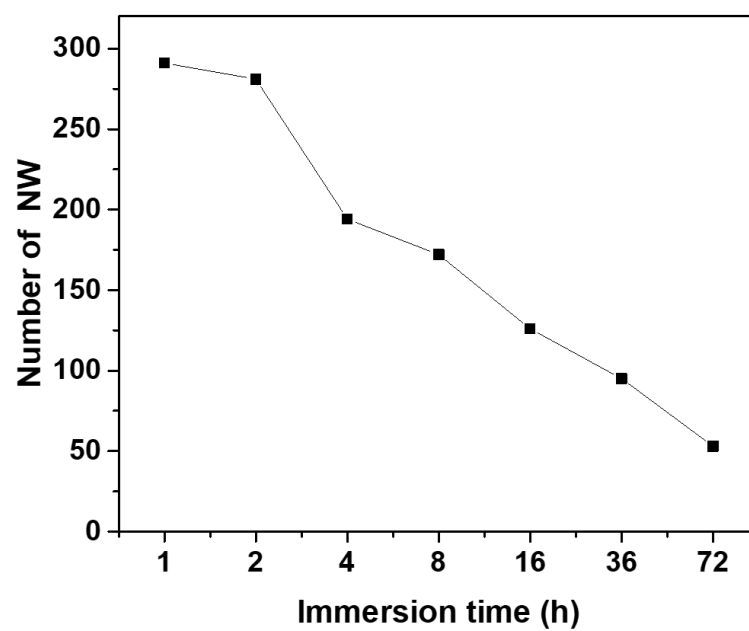


Figure S3. Number of B-ZnO NW in B-ZnO NWA.

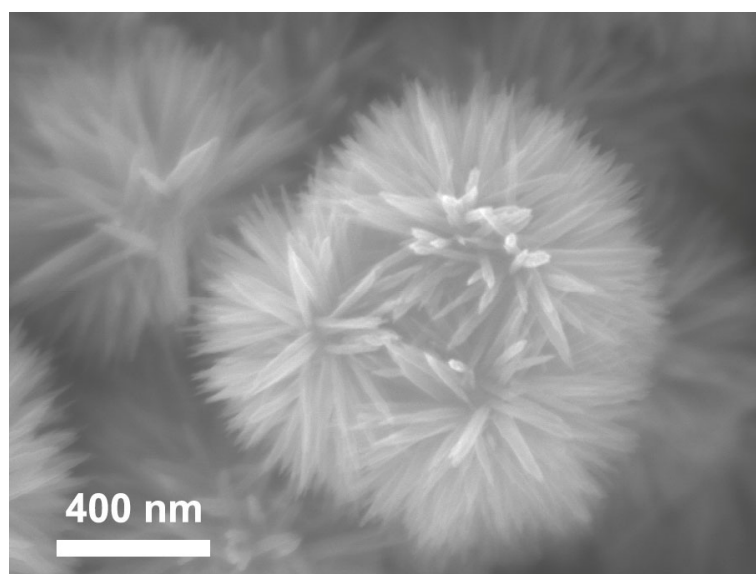


Figure S4. SEM image of trapped B-ZnO NW.

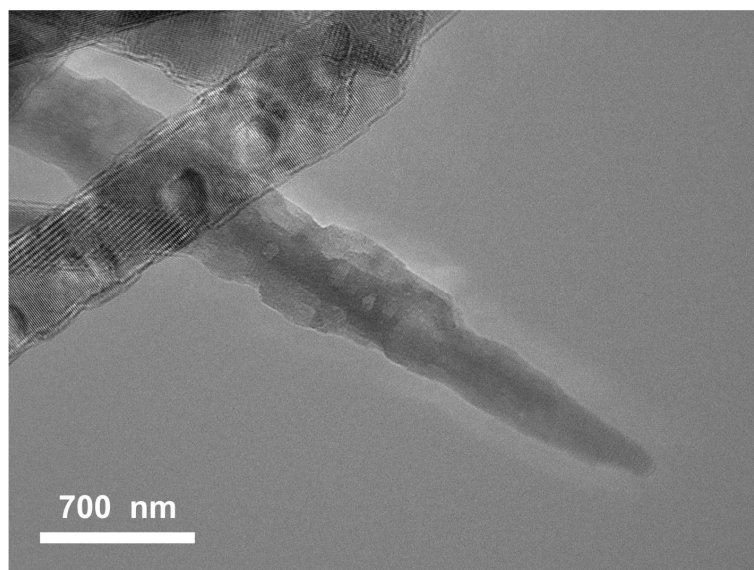


Figure S5. TEM image of a ZnO branch with tapered tip.